

LTEB28 Head

Date/Time: 2025-06-20

Electronics: DAE4 Sn1588

Medium: H700-6000M

Medium parameters used: $f = 730 \text{ MHz}$; $\sigma = 0.896 \text{ S/m}$; $\epsilon_r = 44.302$; $\rho = 1000 \text{ kg/m}^3$

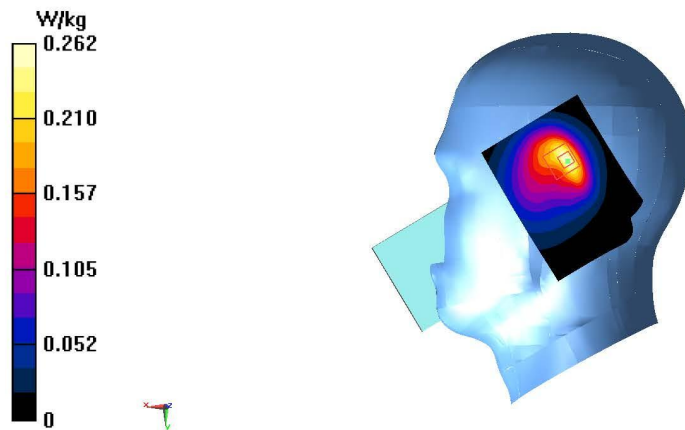
Ambient Temperature: 23.3°C Liquid Temperature: 22.5°C

Communication System: UID 0, LTE Band28 (0) Frequency: 728 MHz Duty Cycle: 1:1

Probe: EX3DV4 - SN3846 ConvF(9.93, 9.93, 9.93) @ 728 MHz

Area Scan (81x61x1): Interpolated grid: $dx=1.500 \text{ mm}$, $dy=1.500 \text{ mm}$
Maximum value of SAR (interpolated) = 0.262 W/kg

Zoom Scan (5x5x7)/Cube 0: Measurement grid: $dx=8\text{mm}$, $dy=8\text{mm}$, $dz=5\text{mm}$
Reference Value = 11.43 V/m ; Power Drift = 0.01 dB
Peak SAR (extrapolated) = 0.415 W/kg
SAR(1 g) = 0.175 W/kg ; SAR(10 g) = 0.097 W/kg
Maximum value of SAR (measured) = 0.315 W/kg



LTEB28 Body

Date/Time: 2025-06-20

Electronics: DAE4 Sn1588

Medium: H700-6000M

Medium parameters used: $f = 728 \text{ MHz}$; $\sigma = 0.896 \text{ S/m}$; $\epsilon_r = 44.302$; $\rho = 1000 \text{ kg/m}^3$

Ambient Temperature: 23.3°C Liquid Temperature: 22.5°C

Communication System: UID 0, LTE Band28 (0) Frequency: 728 MHz Duty Cycle: 1:1

Probe: EX3DV4 - SN3846 ConvF(9.93, 9.93, 9.93) @ 728 MHz

Area Scan (121x91x1): Interpolated grid: $dx=1.500 \text{ mm}$, $dy=1.500 \text{ mm}$
Maximum value of SAR (interpolated) = 1.08 W/kg

Zoom Scan (5x5x7)/Cube 0: Measurement grid: $dx=8\text{mm}$, $dy=8\text{mm}$, $dz=5\text{mm}$
Reference Value = 6.621 V/m ; Power Drift = 0.18 dB
Peak SAR (extrapolated) = 1.50 W/kg
SAR(1 g) = 0.460 W/kg ; SAR(10 g) = 0.202 W/kg
Maximum value of SAR (measured) = 1.05 W/kg



LTEB41 Head

Date/Time: 2025-07-03

Electronics: DAE4 Sn1588

Medium: H700-6000M

Medium parameters used: $f = 2595$ MHz; $\sigma = 1.945$ S/m; $\epsilon_r = 40.948$; $\rho = 1000$ kg/m³

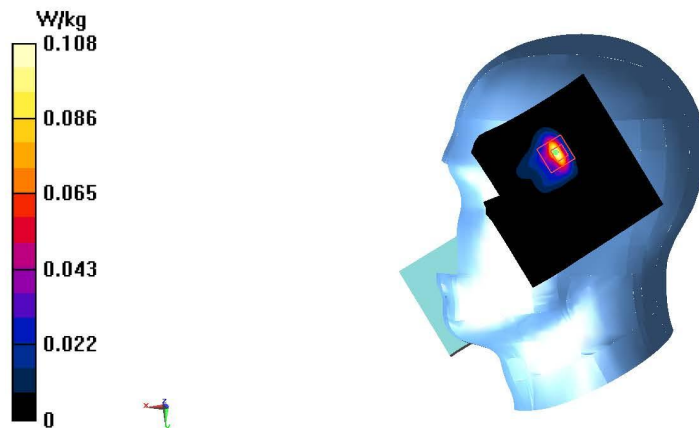
Ambient Temperature: 23.3°C Liquid Temperature: 22.5°C

Communication System: UID 0, LTE Band41 (0) Frequency: 2593 MHz Duty Cycle: 1:1.5787

Probe: EX3DV4 - SN3846 ConvF(7.27, 7.27, 7.27) @ 2593 MHz

Area Scan (81x81x1): Interpolated grid: $dx=1.200$ mm, $dy=1.200$ mm
Maximum value of SAR (interpolated) = 0.108 W/kg

Zoom Scan (5x5x7)/Cube 0: Measurement grid: $dx=5$ mm, $dy=5$ mm, $dz=5$ mm
Reference Value = 0 V/m; Power Drift = 0.19 dB
Peak SAR (extrapolated) = 0.0780 W/kg
SAR(1 g) = 0.037 W/kg; SAR(10 g) = 0.016 W/kg
Maximum value of SAR (measured) = 0.0593 W/kg



LTEB41 Body

Date/Time: 2025-07-03

Electronics: DAE4 Sn1588

Medium: H700-6000M

Medium parameters used: $f = 2506$ MHz; $\sigma = 1.87$ S/m; $\epsilon_r = 39.513$; $\rho = 1000$ kg/m³

Ambient Temperature: 23.3°C Liquid Temperature: 22.5°C

Communication System: UID 0, LTE Band41 (0) Frequency: 2506 MHz Duty Cycle: 1:1.5787

Probe: EX3DV4 - SN3846 ConvF(7.27, 7.27, 7.27) @ 2506 MHz

Area Scan (151x111x1): Interpolated grid: $dx=1.200$ mm, $dy=1.200$ mm

Maximum value of SAR (interpolated) = 1.62 W/kg

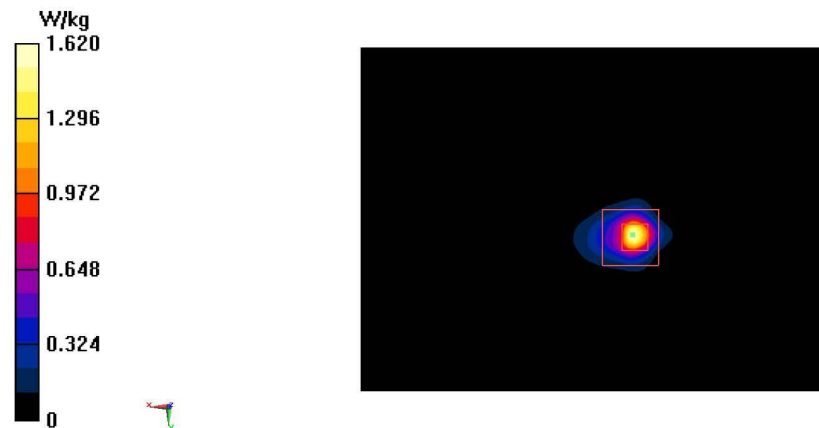
Zoom Scan (7x7x7)/Cube 0: Measurement grid: $dx=5$ mm, $dy=5$ mm, $dz=5$ mm

Reference Value = 12.03 V/m; Power Drift = 0.15 dB

Peak SAR (extrapolated) = 1.93 W/kg

SAR(1 g) = 0.607 W/kg; SAR(10 g) = 0.207 W/kg

Maximum value of SAR (measured) = 1.20 W/kg



LTEB66 Head

Date/Time: 2025-06-25

Electronics: DAE4 Sn1588

Medium: H700-6000M

Medium parameters used: $f = 1745 \text{ MHz}$; $\sigma = 1.364 \text{ S/m}$; $\epsilon_r = 42.126$; $\rho = 1000 \text{ kg/m}^3$

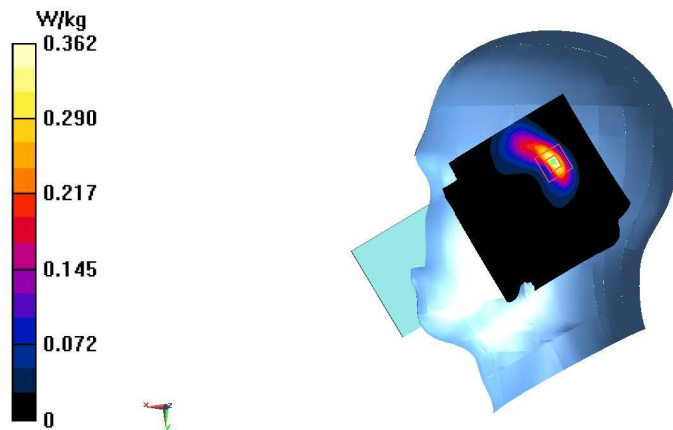
Ambient Temperature: 23.3°C Liquid Temperature: 22.5°C

Communication System: UID 0, LTE Band66 (0) Frequency: 1745 MHz Duty Cycle: 1:1

Probe: EX3DV4 - SN3846 ConvF(8.26, 8.26, 8.26) @ 1745 MHz

Area Scan (81x81x1): Interpolated grid: $dx=1.500 \text{ mm}$, $dy=1.500 \text{ mm}$
Maximum value of SAR (interpolated) = 0.362 W/kg

Zoom Scan (5x5x7)/Cube 0: Measurement grid: $dx=8\text{mm}$, $dy=8\text{mm}$, $dz=5\text{mm}$
Reference Value = 8.228 V/m ; Power Drift = 0.18 dB
Peak SAR (extrapolated) = 0.559 W/kg
SAR(1 g) = 0.260 W/kg ; SAR(10 g) = 0.115 W/kg
Maximum value of SAR (measured) = 0.463 W/kg



LTEB66 Body

Date/Time: 2025-06-25

Electronics: DAE4 Sn1588

Medium: H700-6000M

Medium parameters used: $f = 1745$ MHz; $\sigma = 1.364$ S/m; $\epsilon_r = 42.126$; $\rho = 1000$ kg/m³

Ambient Temperature: 23.3°C Liquid Temperature: 22.5°C

Communication System: UID 0, LTE Band66 (0) Frequency: 1745 MHz Duty Cycle: 1:1

Probe: EX3DV4 - SN3846 ConvF(8.26, 8.26, 8.26) @ 1745 MHz

Area Scan (121x91x1): Interpolated grid: $dx=1.500$ mm, $dy=1.500$ mm
Maximum value of SAR (interpolated) = 1.00 W/kg

Zoom Scan (5x5x7)/Cube 0: Measurement grid: $dx=8$ mm, $dy=8$ mm, $dz=5$ mm
Reference Value = 1.803 V/m; Power Drift = 0.17 dB
Peak SAR (extrapolated) = 0.995 W/kg
SAR(1 g) = 0.394 W/kg; SAR(10 g) = 0.146 W/kg
Maximum value of SAR (measured) = 0.683 W/kg



WIFI2.4G head

Date/Time: 2025-07-01

Electronics: DAE4 Sn1588

Medium: H700-6000M

Medium parameters used: $f = 2410$ MHz; $\sigma = 1.802$ S/m; $\epsilon_r = 41.221$; $\rho = 1000$ kg/m³

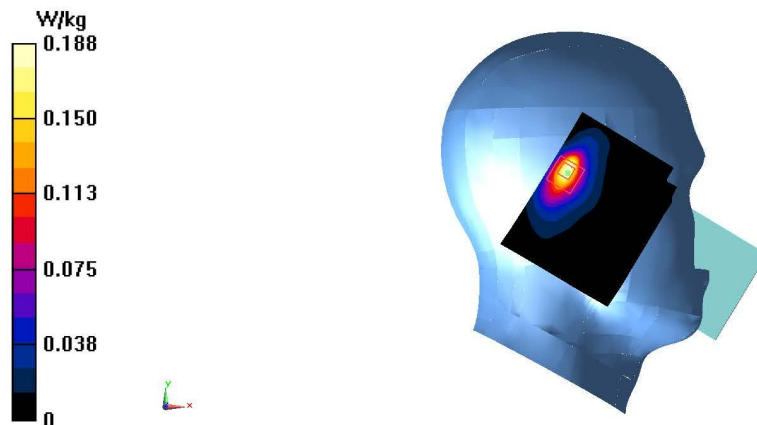
Ambient Temperature: 23.3°C Liquid Temperature: 22.5°C

Communication System: UID 0, WIFI 2450 (0) Frequency: 2412 MHz Duty Cycle: 1:1

Probe: EX3DV4 - SN3846 ConvF(7.43, 7.43, 7.43) @ 2412 MHz

Area Scan (101x81x1): Interpolated grid: $dx=1.200$ mm, $dy=1.200$ mm
Maximum value of SAR (interpolated) = 0.188 W/kg

Zoom Scan (7x7x7)/Cube 0: Measurement grid: $dx=5$ mm, $dy=5$ mm, $dz=5$ mm
Reference Value = 6.851 V/m; Power Drift = -0.09 dB
Peak SAR (extrapolated) = 0.247 W/kg
SAR(1 g) = 0.108 W/kg; SAR(10 g) = 0.050 W/kg
Maximum value of SAR (measured) = 0.179 W/kg



WIFI2.4G Body

Date/Time: 2025-07-01

Electronics: DAE4 Sn1588

Medium: H700-6000M

Medium parameters used: $f = 2462 \text{ MHz}$; $\sigma = 1.864 \text{ S/m}$; $\epsilon_r = 41.73$; $\rho = 1000 \text{ kg/m}^3$

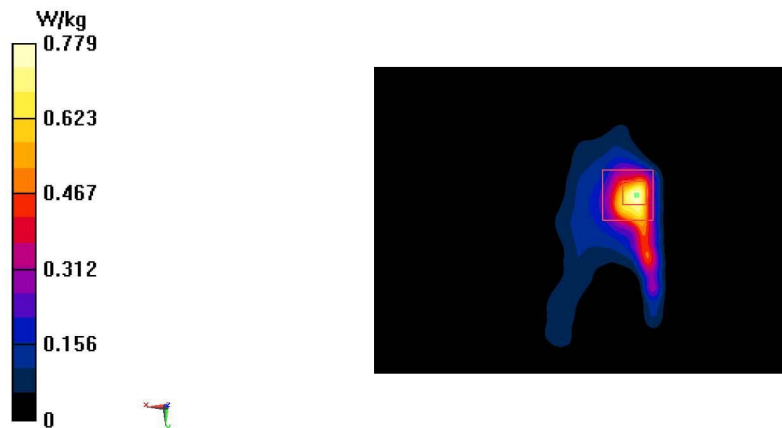
Ambient Temperature: 23.3°C Liquid Temperature: 22.5°C

Communication System: UUID 0, WIFI 2450 (0) Frequency: 2462 MHz Duty Cycle: 1:1

Probe: EX3DV4 - SN3846 ConvF(7.43, 7.43, 7.43) @ 2462 MHz

Area Scan (151x111x1): Interpolated grid: $dx=1.200 \text{ mm}$, $dy=1.200 \text{ mm}$
Maximum value of SAR (interpolated) = 0.779 W/kg

Zoom Scan (7x7x7)/Cube 0: Measurement grid: $dx=5\text{mm}$, $dy=5\text{mm}$, $dz=5\text{mm}$
Reference Value = 8.959 V/m ; Power Drift = -0.12 dB
Peak SAR (extrapolated) = 1.23 W/kg
SAR(1 g) = 0.426 W/kg ; SAR(10 g) = 0.175 W/kg
Maximum value of SAR (measured) = 0.860 W/kg



WIFI5G Head

Date/Time: 2025-07-05

Electronics: DAE4 Sn1588

Medium: H700-6000M

Medium parameters used: $f = 5610$ MHz; $\sigma = 4.898$ S/m; $\epsilon_r = 35.982$; $\rho = 1000$ kg/m³

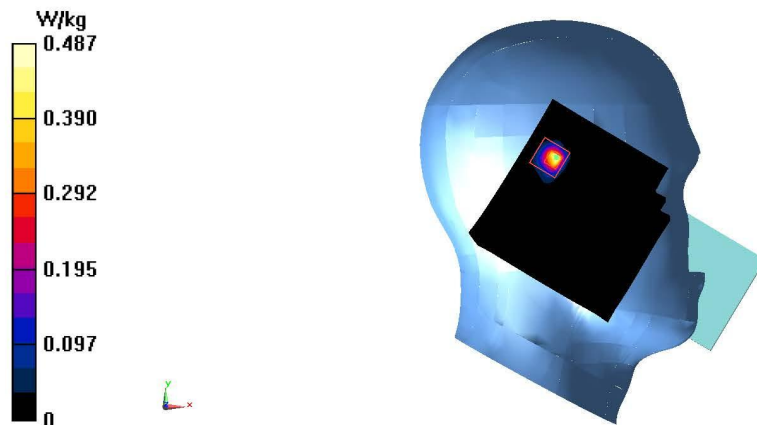
Ambient Temperature: 23.3°C Liquid Temperature: 22.5°C

Communication System: UID 0, 1 WLAN 11a (0) Frequency: 5610 MHz Duty Cycle: 1:1

Probe: EX3DV4 - SN3846 ConvF(4.80, 4.80, 4.80) @ 5610 MHz

Area Scan (121x121x1): Interpolated grid: $dx=1.000$ mm, $dy=1.000$ mm
Maximum value of SAR (interpolated) = 0.487 W/kg

Zoom Scan (9x9x7)/Cube 0: Measurement grid: $dx=4$ mm, $dy=4$ mm, $dz=1.4$ mm
Reference Value = 0 V/m; Power Drift = 0.19 dB
Peak SAR (extrapolated) = 0.893 W/kg
SAR(1 g) = 0.158 W/kg; SAR(10 g) = 0.035 W/kg
Maximum value of SAR (measured) = 0.461 W/kg



WIFI5G Body

Date/Time: 2025-07-05

Electronics: DAE4 Sn1588

Medium: H700-6000M

Medium parameters used: $f = 5805 \text{ MHz}$; $\sigma = 5.114 \text{ S/m}$; $\epsilon_r = 35.677$; $\rho = 1000 \text{ kg/m}^3$

Ambient Temperature: 23.3°C Liquid Temperature: 22.5°C

Communication System: UID 0, 1 WLAN 11a (0) Frequency: 5805 MHz Duty Cycle: 1:1

Probe: EX3DV4 - SN3846 ConvF(4.92, 4.92, 4.92) @ 5805 MHz

Area Scan (101x101x1): Interpolated grid: $dx=1.000 \text{ mm}$, $dy=1.000 \text{ mm}$

Maximum value of SAR (interpolated) = 1.85 W/kg

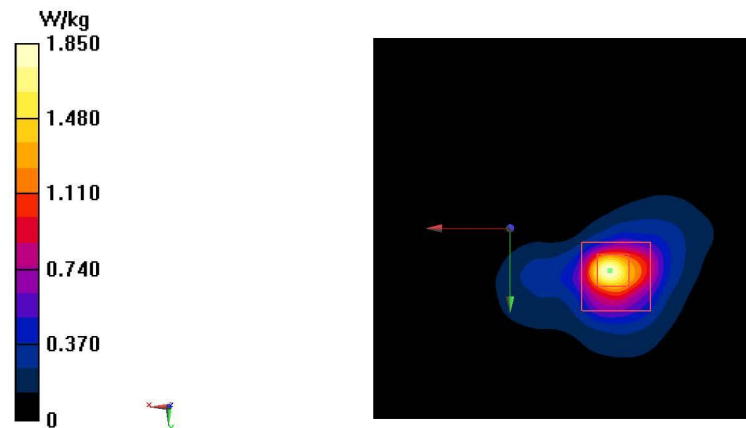
Zoom Scan (7x7x7)/Cube 0: Measurement grid: $dx=4\text{mm}$, $dy=4\text{mm}$, $dz=1.4\text{mm}$

Reference Value = 0.5670 V/m ; Power Drift = 0.13 dB

Peak SAR (extrapolated) = 3.20 W/kg

SAR(1 g) = 0.723 W/kg ; SAR(10 g) = 0.230 W/kg

Maximum value of SAR (measured) = 1.81 W/kg



BT Head

Date/Time: 2025-07-01

Electronics: DAE4 Sn1588

Medium: H700-6000M

Medium parameters used: $f = 2440$ MHz; $\sigma = 1.826$ S/m; $\epsilon_r = 41.176$; $\rho = 1000$ kg/m³

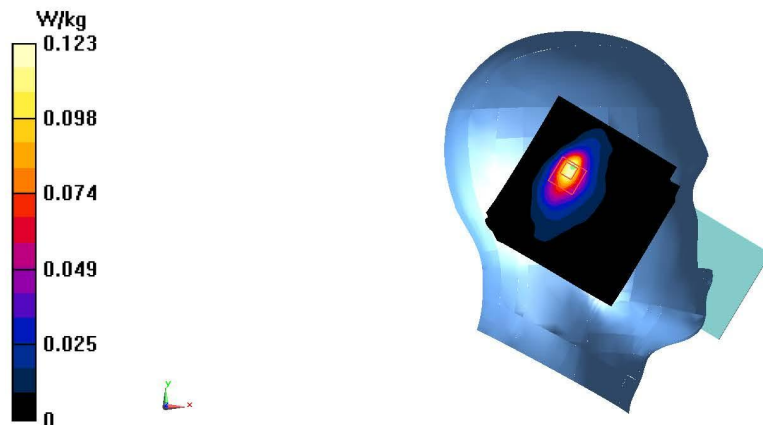
Ambient Temperature: 23.3°C Liquid Temperature: 22.5°C

Communication System: UUID 0, Bluetooth (0) Frequency: 2441 MHz Duty Cycle: 1:1

Probe: EX3DV4 - SN3846 ConvF(7.43, 7.43, 7.43) @ 2441 MHz

Area Scan (101x101x1): Interpolated grid: $dx=1.200$ mm, $dy=1.200$ mm
Maximum value of SAR (interpolated) = 0.123 W/kg

Zoom Scan (8x7x7)/Cube 0: Measurement grid: $dx=5$ mm, $dy=5$ mm, $dz=5$ mm
Reference Value = 5.089 V/m; Power Drift = 0.17 dB
Peak SAR (extrapolated) = 0.158 W/kg
SAR(1 g) = 0.069 W/kg; SAR(10 g) = 0.032 W/kg
Maximum value of SAR (measured) = 0.117 W/kg



BT Body

Date/Time: 2025-07-01

Electronics: DAE4 Sn1588

Medium: H700-6000M

Medium parameters used: $f = 2440$ MHz; $\sigma = 1.826$ S/m; $\epsilon_r = 41.176$; $\rho = 1000$ kg/m³

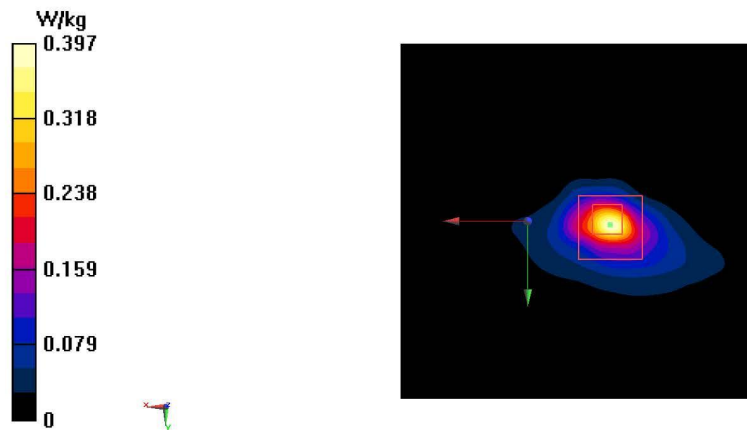
Ambient Temperature: 23.3°C Liquid Temperature: 22.5°C

Communication System: UUID 0, Bluetooth (0) Frequency: 2441 MHz Duty Cycle: 1:1

Probe: EX3DV4 - SN3846 ConvF(7.43, 7.43, 7.43) @ 2441 MHz

Area Scan (101x101x1): Interpolated grid: $dx=1.200$ mm, $dy=1.200$ mm
Maximum value of SAR (interpolated) = 0.397 W/kg

Zoom Scan (7x7x7)/Cube 0: Measurement grid: $dx=5$ mm, $dy=5$ mm, $dz=5$ mm
Reference Value = 7.197 V/m; Power Drift = 0.18 dB
Peak SAR (extrapolated) = 0.545 W/kg
SAR(1 g) = 0.180 W/kg; SAR(10 g) = 0.070 W/kg
Maximum value of SAR (measured) = 0.384 W/kg



ANNEX B System Verification Results

750 MHz

Date: 2025/6/20

Electronics: DAE4 Sn1588

Medium: H700-6000M

Medium parameters used: $f = 750 \text{ MHz}$; $\sigma = 0.8844 \text{ mho/m}$; $\epsilon_r = 45.16$; $\rho = 1000 \text{ kg/m}^3$

Ambient Temperature: 22.5oC Liquid Temperature: 22.3oC

Communication System: CW Frequency: 750 MHz Duty Cycle: 1:1

Probe: EX3DV4 – SN3846 ConvF(9.93, 9.93,9.93)

Area Scan (81x191x1): Interpolated grid: $dx=1.500 \text{ mm}$, $dy=1.500 \text{ mm}$

Maximum value of SAR (interpolated) = 2.86 W/kg

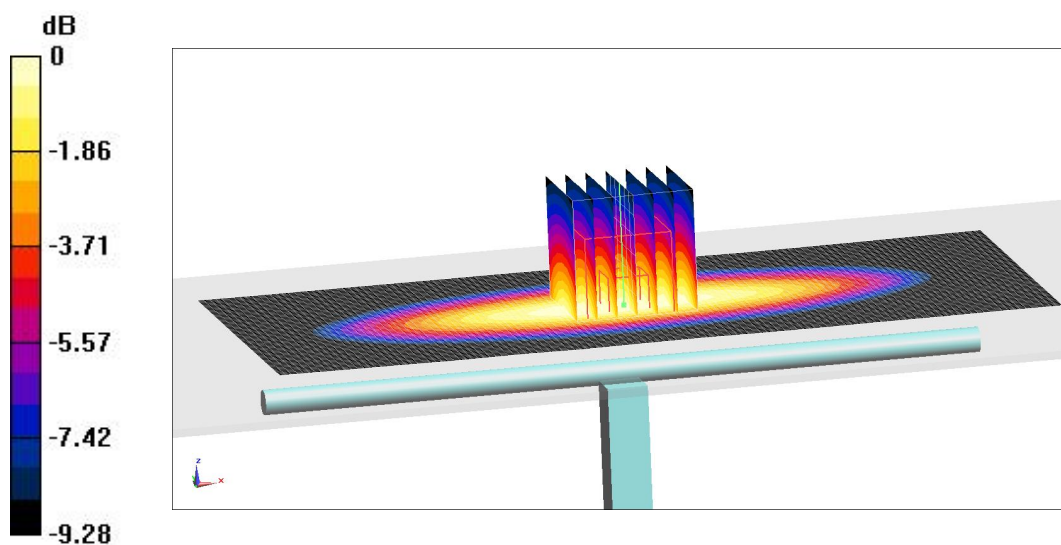
Zoom Scan (7x7x7)/Cube 0: Measurement grid: $dx=8\text{mm}$, $dy=8\text{mm}$, $dz=5\text{mm}$

Reference Value =55.05 V/m; Power Drift = 0.04 dB

Peak SAR (extrapolated) = 3.22 W/kg

SAR(1 g) = 2.16W/kg; SAR(10 g) = 1.33W/kg

Maximum value of SAR (measured) = 2.8 W/kg



0 dB = 2.8 W/kg = 4.47 dB W/kg

900 MHz

Date: 2025/6/23

Electronics: DAE4 Sn1588

Medium: H700-6000M

Medium parameters used: $f = 900$ MHz; $\sigma = 0.9435$ mho/m; $\epsilon_r = 44.66$; $\rho = 1000$ kg/m³

Ambient Temperature: 22.5oC Liquid Temperature: 22.3oC

Communication System: CW Frequency: 900 MHz Duty Cycle: 1:1

Probe: EX3DV4 –SN3846 ConvF(9.47, 9.47,9.47)

System Validation /Area Scan (81x191x1): Interpolated grid: $dx=1.500$ mm, $dy=1.500$ mm

Maximum value of SAR (interpolated) = 3.53 W/kg

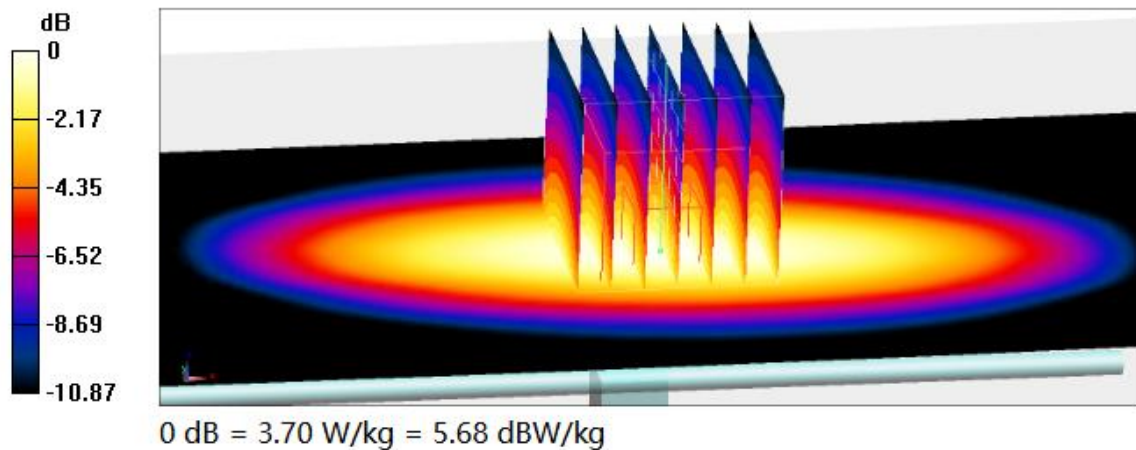
System Validation /Zoom Scan (7x7x7)/Cube 0: Measurement grid: $dx=8$ mm, $dy=8$ mm, $dz=5$ mm

Reference Value =59.81 V/m; Power Drift =0.18dB

Peak SAR (extrapolated) = 4.29 W/kg

SAR(1 g) = 2.76W/kg; SAR(10 g) =1.79 W/kg

Maximum value of SAR (measured) = 3.70 W/kg



900 MHz

Date: 2025/7/18

Electronics: DAE4 Sn1588

Medium: H700-6000M

Medium parameters used: $f = 900$ MHz; $\sigma = 0.957$ mho/m; $\epsilon_r = 42.57$; $\rho = 1000$ kg/m³

Ambient Temperature: 22.5oC Liquid Temperature: 22.3oC

Communication System: CW Frequency: 900 MHz Duty Cycle: 1:1

Probe: EX3DV4 –SN3846 ConvF(9.47, 9.47,9.47)

System Validation /Area Scan (81x191x1): Interpolated grid: $dx=1.500$ mm, $dy=1.500$ mm

Maximum value of SAR (interpolated) = 3.29 W/kg

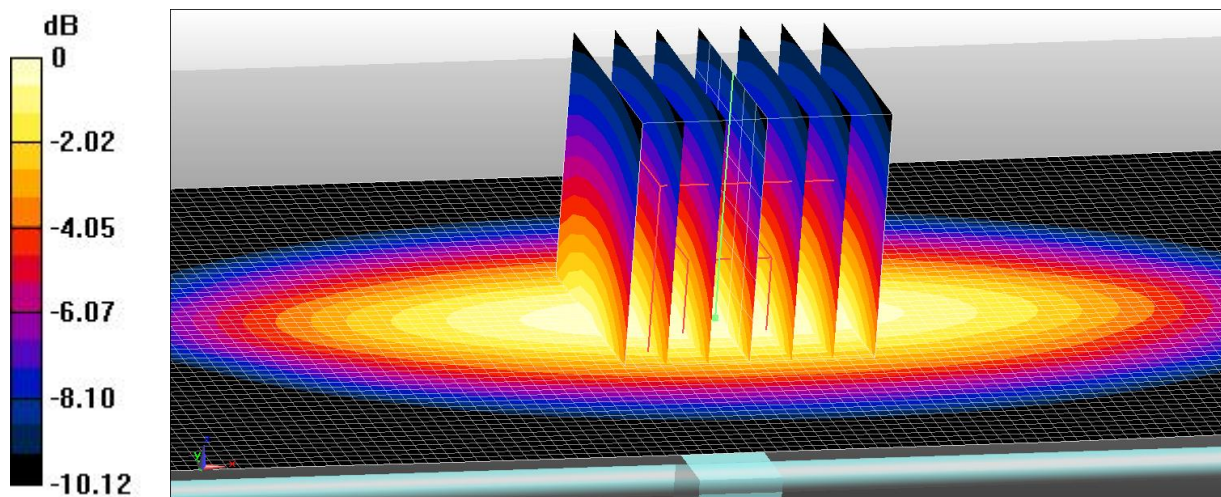
System Validation /Zoom Scan (7x7x7)/Cube 0: Measurement grid: $dx=8$ mm, $dy=8$ mm, $dz=5$ mm

Reference Value =61.53 V/m; Power Drift =0.12dB

Peak SAR (extrapolated) = 3.60 W/kg

SAR(1 g) = 2.73W/kg; SAR(10 g) =1.71 W/kg

Maximum value of SAR (measured) = 3.31 W/kg



0 dB = 3.31 W/kg = 5.20 dBW/kg

1750 MHz

Date: 2025/6/25

Electronics: DAE4 Sn1588

Medium: H700-6000M

Medium parameters used: $f = 1750$ MHz; $\sigma = 1.379$ mho/m; $\epsilon_r = 42.91$; $\rho = 1000$ kg/m³

Ambient Temperature: 22.5oC Liquid Temperature: 22.3oC

Communication System: CW Frequency: 1750 MHz Duty Cycle: 1:1

Probe: EX3DV4 –SN3846 ConvF(8.26,8.26 ,8.26)

System Validation /Area Scan (81x191x1): Interpolated grid: dx=1.500 mm, dy=1.500 mm

Maximum value of SAR (interpolated) = 13.4 W/kg

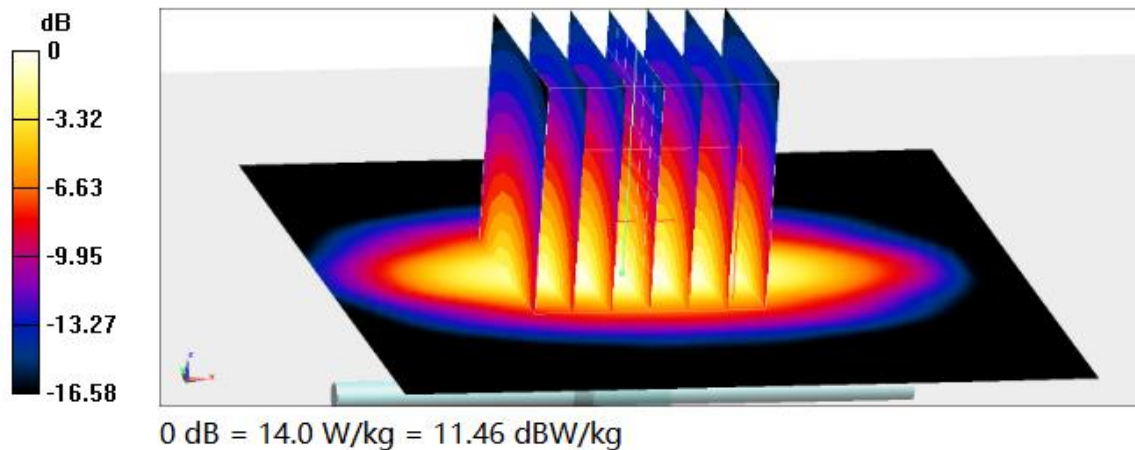
System Validation /Zoom Scan (7x7x7)/Cube 0: Measurement grid: dx=8mm, dy=8mm, dz=5mm

Reference Value =97.33 V/m; Power Drift = -0.11 dB

Peak SAR (extrapolated) = 16.8 W/kg

SAR(1 g) = 9.49 W/kg; SAR(10 g) = 4.76 W/kg

Maximum value of SAR (measured) = 14.0 W/kg



1900 MHz

Date: 2025/6/27

Electronics: DAE4 Sn1588

Medium: H700-6000M

Medium parameters used: $f = 1900$ MHz; $\sigma = 1.464$ mho/m; $\epsilon_r = 42.59$; $\rho = 1000$ kg/m³

Ambient Temperature: 22.5°C Liquid Temperature: 22.3°C

Communication System: CW Frequency: 1900 MHz Duty Cycle: 1:1

Probe: EX3DV4 –SN3846 ConvF(7.92,7.92 ,7.92)

System Validation /Area Scan (81x191x1): Interpolated grid: $dx=1.500$ mm, $dy=1.500$ mm

Maximum value of SAR (interpolated) = 15.2 W/kg

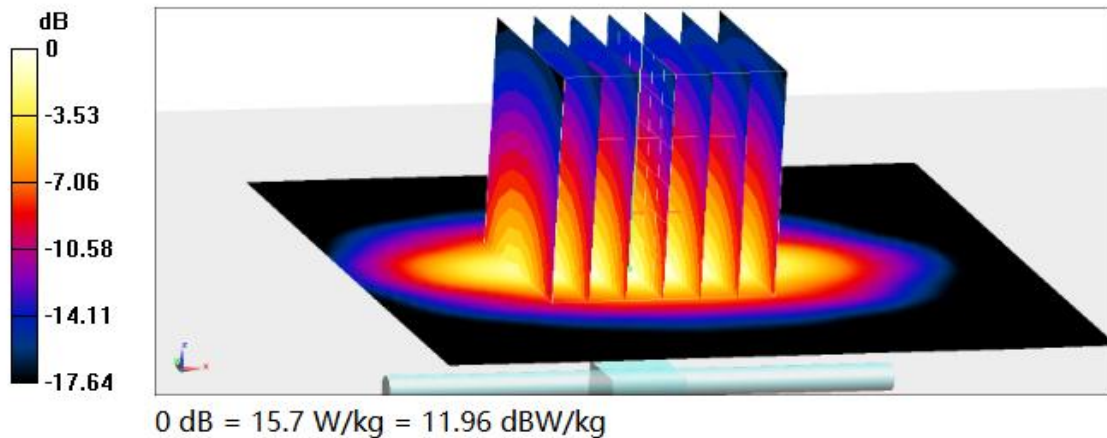
System Validation /Zoom Scan (7x7x7)/Cube 0: Measurement grid: $dx=5$ mm, $dy=5$ mm, $dz=5$ mm

Reference Value = 101.6 V/m; Power Drift = 0.08 dB

Peak SAR (extrapolated) = 18.9 W/kg

SAR(1 g) = 10.1 W/kg; SAR(10 g) = 5.39 W/kg

Maximum value of SAR (measured) = 15.7 W/kg



2450 MHz

Date: 2025/7/1

Electronics: DAE4 Sn1588

Medium: H700-6000M

Medium parameters used: $f = 2450$ MHz; $\sigma = 1.854$ mho/m; $\epsilon_r = 41.76$; $\rho = 1000$ kg/m³

Ambient Temperature: 22.5°C Liquid Temperature: 22.3°C

Communication System: CW Frequency: 2450 MHz Duty Cycle: 1:1

Probe: EX3DV4 –SN3846 ConvF(7.43, 7.43, 7.43)

System Validation /Area Scan (81x191x1): Interpolated grid: $dx=1.200$ mm, $dy=1.200$ mm

Maximum value of SAR (interpolated) = 22.4 W/kg

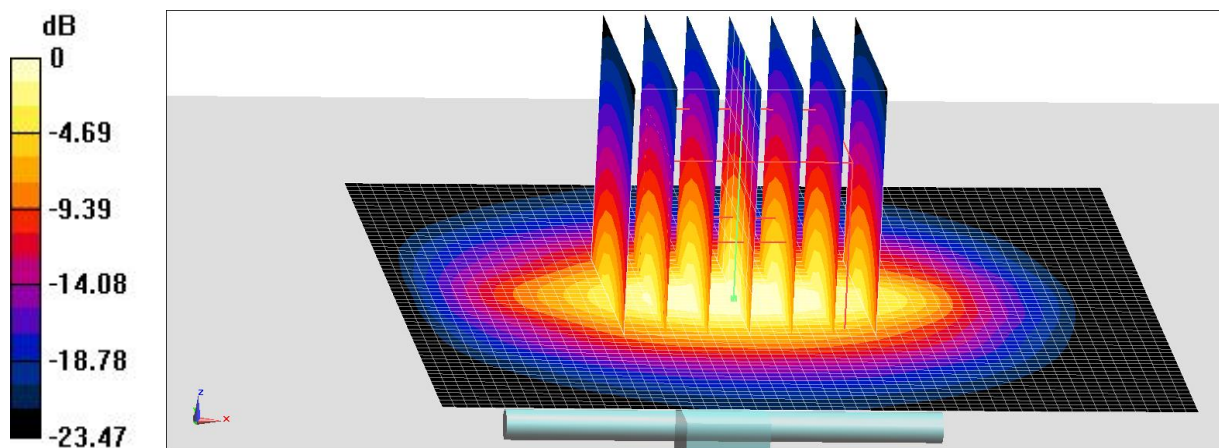
System Validation /Zoom Scan (7x7x7)/Cube 0: Measurement grid: $dx=5$ mm, $dy=5$ mm, $dz=5$ mm

Reference Value = 109.7 V/m; Power Drift = -0.15 dB

Peak SAR (extrapolated) = 28.5 W/kg

SAR(1 g) = 12.6 W/kg; SAR(10 g) = 6.17 W/kg

Maximum value of SAR (measured) = 22.8 W/kg



$$0 \text{ dB} = 22.8 \text{ W/kg} = 13.58 \text{ dBW/kg}$$

2600 MHz

Date: 2025/7/3

Electronics: DAE4 Sn1588

Medium: H700-6000M

Medium parameters used: $f = 2600$ MHz; $\sigma = 1.97$ mho/m; $\epsilon_r = 41.44$; $\rho = 1000$ kg/m³

Ambient Temperature: 22.5oC Liquid Temperature: 22.3oC

Communication System: CW Frequency: 2600 MHz Duty Cycle: 1:1

Probe: EX3DV4 –SN3846 ConvF(7.27, 7.27,7.27)

System Validation /Area Scan (61x81x1): Interpolated grid: dx=1.200 mm, dy=1.200 mm

Maximum value of SAR (interpolated) = 21.9 W/kg

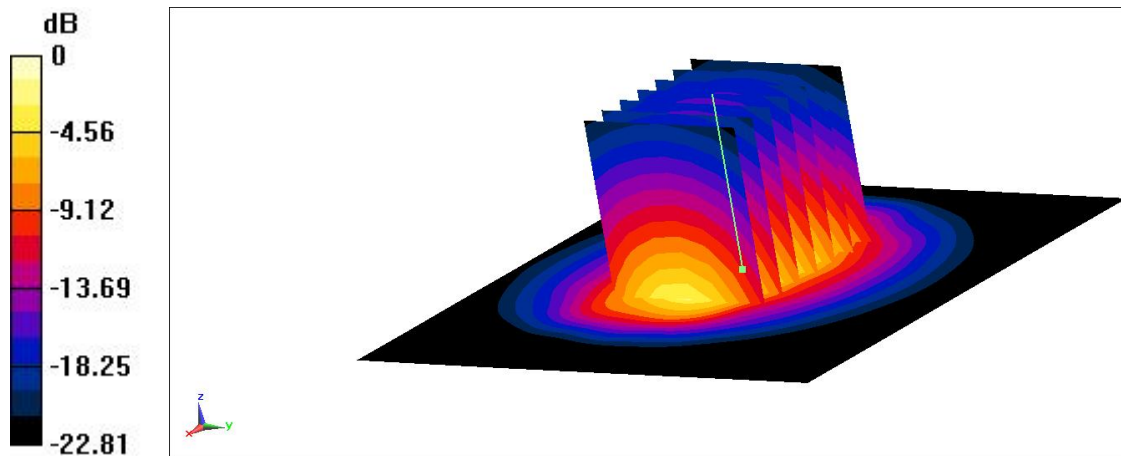
System Validation /Zoom Scan (7x7x7)/Cube 0: Measurement grid: dx=5mm, dy=5mm, dz=5mm

Reference Value =101.2 V/m; Power Drift = 0.15 dB

Peak SAR (extrapolated) = 28.4 W/kg

SAR(1 g) = 13.1W/kg; SAR(10 g) = 6.26W/kg

Maximum value of SAR (measured) = 23.3 W/kg



0 dB = 23.3 W/kg = 13.67 dBW/kg

5250 MHz

Date: 2025/7/5

Electronics: DAE4 Sn1588

Medium: H700-6000M

Medium parameters used: $f = 5250$ MHz; $\sigma = 4.511$ S/m; $\epsilon_r = 36.91$; $\rho = 1000$ kg/m³

Ambient Temperature: 23.3°C Liquid Temperature: 22.5°C

Communication System: CW (0) Frequency: 5250 MHz Duty Cycle: 1:1

Probe: EX3DV4 – SN3846 ConvF(5.40, 5.40, 5.40)

Area Scan (91x91x1): Interpolated grid: $dx=1.000$ mm, $dy=1.000$ mm

Maximum value of SAR (interpolated) = 17.9 W/kg

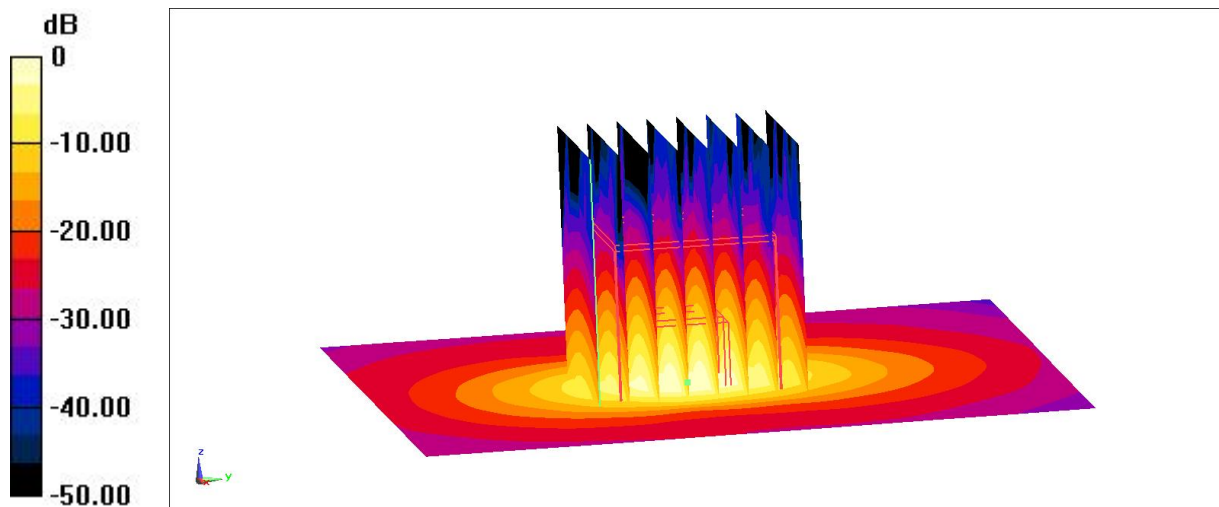
Zoom Scan (4x4x1.4mm, graded), $dist=1.4$ mm (8x8x8)/Cube 0: Measurement grid: $dx=4$ mm, $dy=4$ mm, $dz=1.4$ mm

Reference Value = 68.11 V/m; Power Drift = -0.04 dB

Peak SAR (extrapolated) = 31.9 W/kg

SAR(1 g) = 7.83 W/kg; SAR(10 g) = 2.17 W/kg

Maximum value of SAR (measured) = 18.5 W/kg



0 dB = 18.5 W/kg = 12.67 dBW/kg

5600 MHz

Date: 2025/7/5

Electronics: DAE4 Sn1588

Medium: H700-6000M

Medium parameters used: $f = 5600$ MHz; $\sigma = 4.885$ S/m; $\epsilon_r = 36.31$; $\rho = 1000$ kg/m³

Ambient Temperature: 23.3°C Liquid Temperature: 22.5°C

Communication System: CW (0) Frequency: 5600 MHz Duty Cycle: 1:1

Probe: EX3DV4 – SN3846 ConvF(4.80, 4.80, 4.80)

Area Scan (91x91x1): Interpolated grid: $dx=1.000$ mm, $dy=1.000$ mm

Maximum value of SAR (interpolated) = 20.2 W/kg

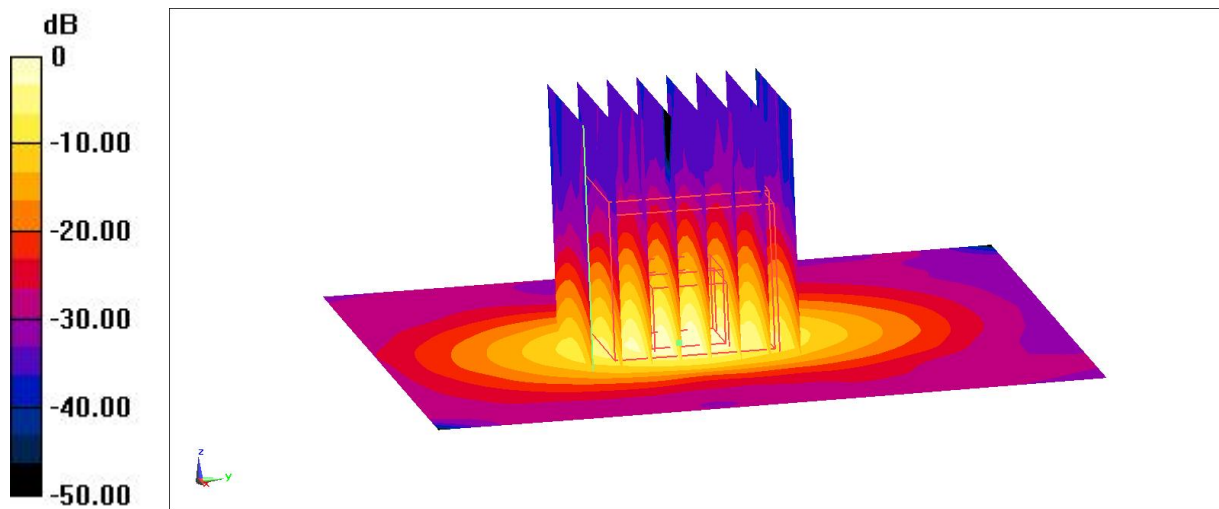
Zoom Scan (4x4x1.4mm, graded), $dist=1.4$ mm (8x8x8)/Cube 0: Measurement grid: $dx=4$ mm, $dy=4$ mm, $dz=1.4$ mm

Reference Value = 61.12 V/m; Power Drift = -0.12 dB

Peak SAR (extrapolated) = 35.1 W/kg

SAR(1 g) = 8.27 W/kg; SAR(10 g) = 2.32 W/kg

Maximum value of SAR (measured) = 19.6 W/kg



0 dB = 19.6 W/kg = 12.92 dBW/kg

5750 MHz

Date: 2025/7/5

Electronics: DAE4 Sn1588

Medium: H700-6000M

Medium parameters used: $f = 5750$ MHz; $\sigma = 5.05$ S/m; $\epsilon_r = 36.07$; $\rho = 1000$ kg/m³

Ambient Temperature: 23.3°C Liquid Temperature: 22.5°C

Communication System: CW (0) Frequency: 5750 MHz Duty Cycle: 1:1

Probe: EX3DV4 – SN3846 ConvF(4.92, 4.92, 4.92)

Area Scan (91x91x1): Interpolated grid: $dx=1.000$ mm, $dy=1.000$ mm

Maximum value of SAR (interpolated) = 19.5 W/kg

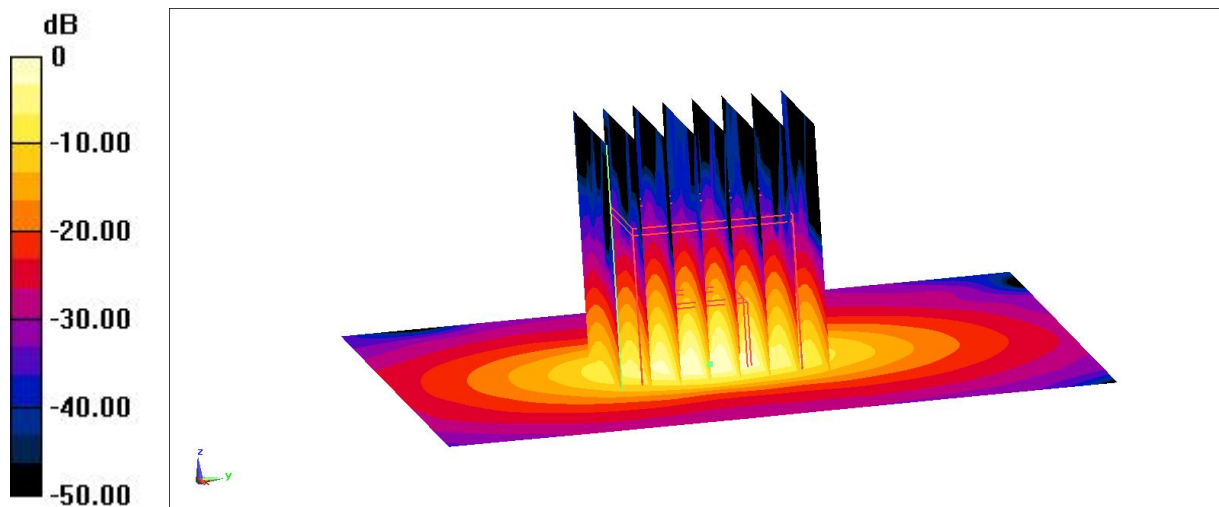
Zoom Scan (4x4x1.4mm, graded), $dist=1.4$ mm (8x8x8)/Cube 0: Measurement grid: $dx=4$ mm, $dy=4$ mm, $dz=1.4$ mm

Reference Value = 66.12 V/m; Power Drift = -0.12 dB

Peak SAR (extrapolated) = 37 W/kg

SAR(1 g) = 7.81 W/kg; SAR(10 g) = 2.22 W/kg

Maximum value of SAR (measured) = 19.6 W/kg

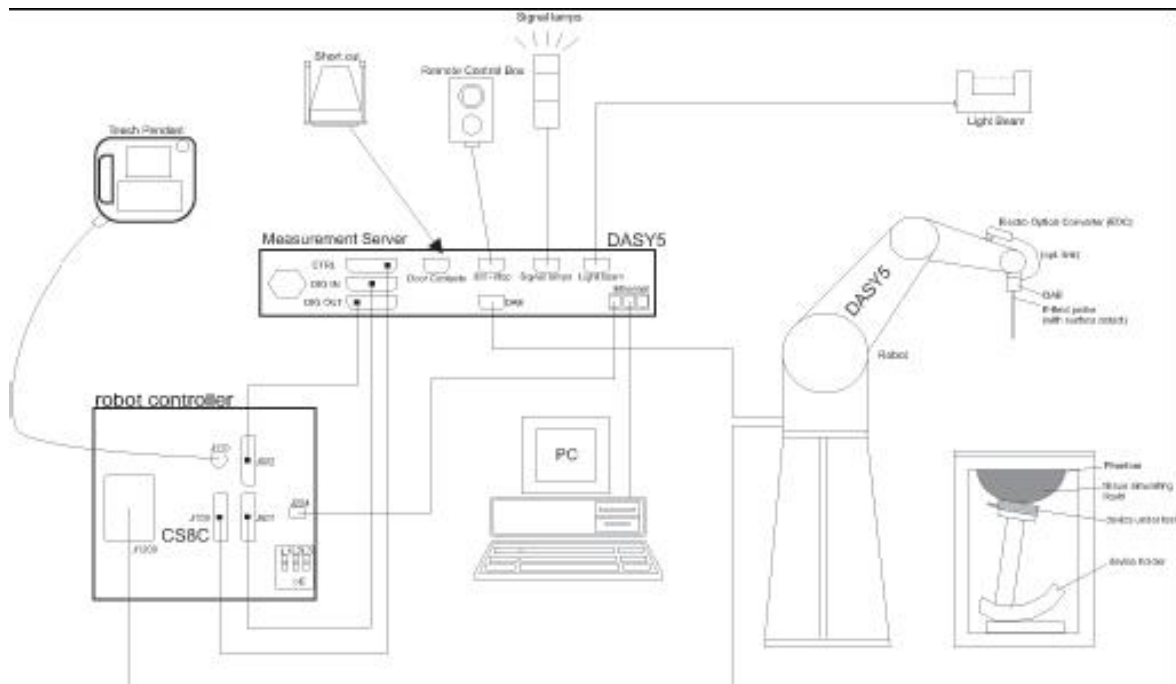


0 dB = 19.6 W/kg = 12.92 dBW/kg

ANNEX C SAR Measurement Setup

C.1 Measurement Set-up

The Dasy5 or DASY8 system for performing compliance tests is illustrated above graphically. This system consists of the following items:



Picture C.1 SAR Lab Test Measurement Set-up

- A standard high precision 6-axis robot (Stäubli TX=RX family) with controller, teach pendant and software. An arm extension for accommodating the data acquisition electronics (DAE).
- An isotropic field probe optimized and calibrated for the targeted measurement.
- A data acquisition electronics (DAE) which performs the signal amplification, signal multiplexing, AD-conversion, offset measurements, mechanical surface detection, collision detection, etc. The unit is battery powered with standard or rechargeable batteries. The signal is optically transmitted to the EOC.
- The Electro-optical converter (EOC) performs the conversion from optical to electrical signals for the digital communication to the DAE. To use optical surface detection, a special version of the EOC is required. The EOC signal is transmitted to the measurement server.
- The function of the measurement server is to perform the time critical tasks such as signal filtering, control of the robot operation and fast movement interrupts.
- The Light Beam used is for probe alignment. This improves the (absolute) accuracy of the probe positioning.
- A computer running Win10 and the DASY5 or DASY8 software.
- Remote control and teach pendant as well as additional circuitry for robot safety such as
- warning lamps, etc.
- The phantom, the device holder and other accessories according to the targeted measurement.

C.2 DASY5 or DASY8 E-field Probe System

The SAR measurements were conducted with the dosimetric probe designed in the classical triangular configuration and optimized for dosimetric evaluation. The probe is constructed using the thick film technique; with printed resistive lines on ceramic substrates. The probe is equipped with an optical multifiber line ending at the front of the probe tip. It is connected to the EOC box on the robot arm and provides an automatic detection of the phantom surface. Half of the fibers are connected to a pulsed infrared transmitter, the other half to a synchronized receiver. As the probe approaches the surface, the reflection from the surface produces a coupling from the transmitting to the receiving fibers. This reflection increases first during the approach, reaches maximum and then decreases. If the probe is flatly touching the surface, the coupling is zero. The distance of the coupling maximum to the surface is independent of the surface reflectivity and largely independent of the surface to probe angle. The DASY5 or DASY8 software reads the reflection during a software approach and looks for the maximum using 2nd curve fitting. The approach is stopped at reaching the maximum.

Probe Specifications:

Model: EX3DV4
Frequency 10MHz — 6.0GHz(EX3DV4)
Range:
Calibration: In head and body simulating tissue at
 Frequencies from 835 up to 5800MHz
Linearity: ± 0.2 dB(30 MHz to 6 GHz) for EX3DV4

Dynamic Range: 10 mW/kg — 100W/kg

Probe Length: 330 mm

Probe Tip

Length: 20 mm

Body Diameter: 12 mm

Tip Diameter: 2.5 mm

Tip-Center: 1 mm

Application: SAR Dosimetry Testing
 Compliance tests of mobile phones
 Dosimetry in strong gradient fields



Picture C.2 Near-field Probe



Picture C.3 E-field Probe

C.3 E-field Probe Calibration

Each E-Probe/Probe Amplifier combination has unique calibration parameters. A TEM cell calibration procedure is conducted to determine the proper amplifier settings to enter in the probe parameters. The amplifier settings are determined for a given frequency by subjecting the probe to a known E-field density (1 mW/cm²) using an RF Signal generator, TEM cell, and RF Power Meter.

The free space E-field from amplified probe outputs is determined in a test chamber. This calibration can be performed in a TEM cell if the frequency is below 1 GHz and in a waveguide or other methodologies above 1 GHz for free space. For the free space calibration, the probe is placed in the volumetric center of the cavity and at the proper orientation with the field. The probe is then rotated 360 degrees until the three channels show the maximum reading. The power density readings equate to 1 mW/cm².

E-field temperature correlation calibration is performed in a flat phantom filled with the appropriate simulated brain tissue. The E-field in the medium correlates with the temperature rise in the dielectric medium. For temperature correlation calibration a RF transparent thermistor-based temperature probe is used in conjunction with the E-field probe.

$$SAR = C \frac{\Delta T}{\Delta t}$$

Where:

Δt = Exposure time (30 seconds),

C = Heat capacity of tissue (brain or muscle),

ΔT = Temperature increase due to RF exposure.

$$SAR = \frac{|E|^2 \cdot \sigma}{\rho}$$

Where:

σ = Simulated tissue conductivity,

ρ = Tissue density (kg/m³).

C.4 Other Test Equipment

C.4.1 Data Acquisition Electronics(DAE)

The data acquisition electronics consist of a highly sensitive electrometer-grade preamplifier with auto-zeroing, a channel and gain-switching multiplexer, a fast 16 bit AD-converter and a command decoder with a control logic unit. Transmission to the measurement server is accomplished through an optical downlink for data and status information, as well as an optical uplink for commands and the clock.

The mechanical probe mounting device includes two different sensor systems for frontal and sideways probe contacts. They are used for mechanical surface detection and probe collision detection.

The input impedance of the DAE is 200 MOhm; the inputs are symmetrical and floating. Common mode rejection is above 80 dB.



Picture C.4: DAE

C.4.2 Robot

The SPEAG DASY system uses the high precision robots (DASY5: RX160L; DASY8: TX2-90XL spe) type from Stäubli SA (France). For the 6-axis controller system, the robot controller version from Stäubli is used. The Stäubli robot series have many features that are important for our application:

- High precision (repeatability 0.02mm)
- High reliability (industrial design)
- Low maintenance costs (virtually maintenance free due to direct drive gears; no belt drives)
- Jerk-free straight movements (brushless synchron motors; no stepper motors)
- Low ELF interference (motor control fields shielded via the closed metallic construction shields)



Picture C.5 DASY 5



Picture C.6 DASY 8

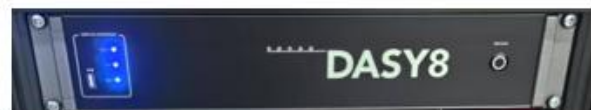
C.4.3 Measurement Server

The Measurement server is based on a PC/104 CPU board with CPU (DASY5/DASY8: 400 MHz, Intel Celeron), chipdisk (DASY5/DASY8: 128MB), RAM (DASY5/DASY8: 128MB). The necessary circuits for communication with the DAE electronic box, as well as the 16 bit AD converter system for optical detection and digital I/O interface are contained on the DASY I/O board, which is directly connected to the PC/104 bus of the CPU board.

The measurement server performs all real-time data evaluation of field measurements and surface detection, controls robot movements and handles safety operation. The PC operating system cannot interfere with these time critical processes. All connections are supervised by a watchdog, and disconnection of any of the cables to the measurement server will automatically disarm the robot and disable all program-controlled robot movements. Furthermore, the measurement server is equipped with an expansion port which is reserved for future applications. Please note that this expansion port does not have a standardized pinout, and therefore only devices provided by SPEAG can be connected. Devices from any other supplier could seriously damage the measurement server.



Picture C.7 Server for DASY 5



Picture C.8 Server for DASY 8

C.4.4 Device Holder for Phantom

The SAR in the phantom is approximately inversely proportional to the square of the distance between the source and the liquid surface. For a source at 5mm distance, a positioning uncertainty of $\pm 0.5\text{mm}$ would produce a SAR uncertainty of $\pm 20\%$. Accurate device positioning is therefore crucial for accurate and repeatable measurements. The positions in which the devices must be measured are defined by the standards.

The DASY device holder is designed to cope with the different positions given in the standard. It has two scales for device rotation (with respect to the body axis) and device inclination (with respect to the line between the ear reference points). The rotation centers for both scales are the ear reference point (ERP). Thus the device needs no repositioning when changing the angles.

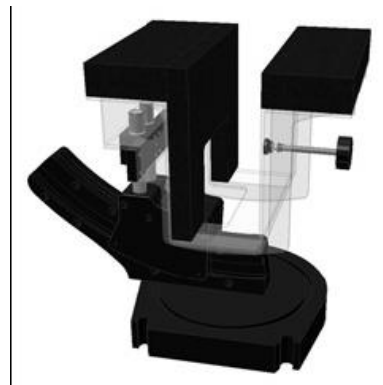
The DASY device holder is constructed of low-loss POM material having the following dielectric parameters: relative permittivity $\epsilon=3$ and loss tangent $\delta=0.02$. The amount of dielectric material has been reduced in the closest vicinity of the device, since measurements have suggested that the influence of the clamp on the test results could thus be lowered.

<Laptop Extension Kit>

The extension is lightweight and made of POM, acrylic glass and foam. It fits easily on the upper part of the Mounting Device in place of the phone positioner. The extension is fully compatible with the Twin-SAM and ELI phantoms.



Picture C.9: Device Holder



Picture C.10: Laptop Extension Kit

C.4.5 Phantom

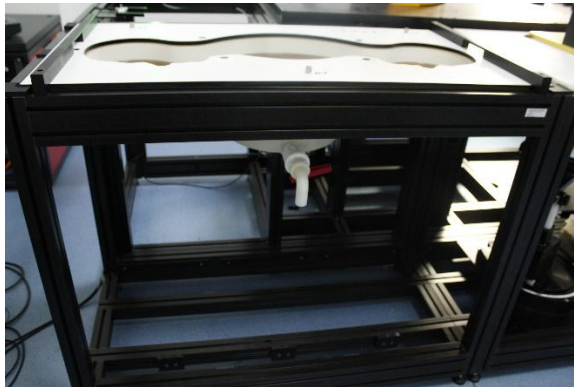
The SAM Twin Phantom V4.0 is constructed of a fiberglass shell integrated in a table. The shape of the shell is based on data from an anatomical study designed to represent the 90th percentile of the population. The phantom enables the dissymmetric evaluation of SAR for both left and right handed handset usage, as well as body-worn usage using the flat phantom region. Reference markings on the Phantom allow the complete setup of all predefined phantom positions and measurement grids by manually teaching three points in the robot. The shell phantom has a 2mm shell thickness (except the ear region where shell thickness increases to 6 mm).

Shell Thickness: 2 ± 0.2 mm

Filling Volume: Approx. 25 liters

Dimensions: 810 x 1000 x 500 mm (H x L x W)

Available: Special

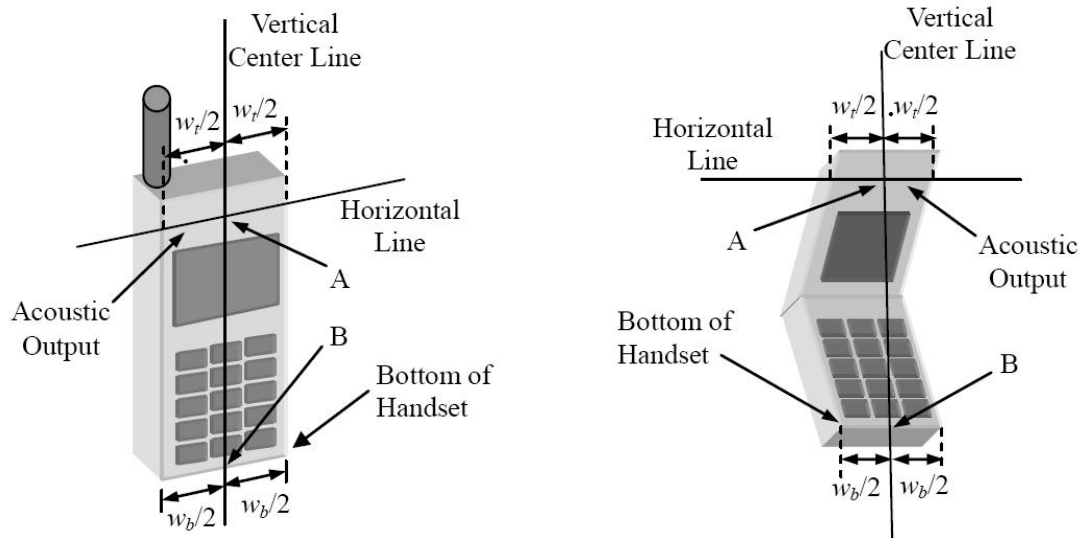


Picture C.11 SAM Twin Phantom

ANNEX D Position of the wireless device in relation to the phantom

D.1 General considerations

This standard specifies two handset test positions against the head phantom – the “cheek” position and the “tilt” position.



w_t Width of the handset at the level of the acoustic

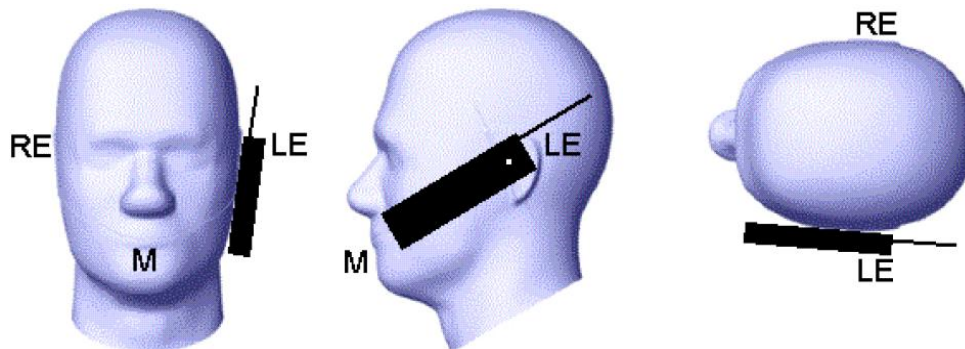
w_b Width of the bottom of the handset

A Midpoint of the width w_t of the handset at the level of the acoustic output

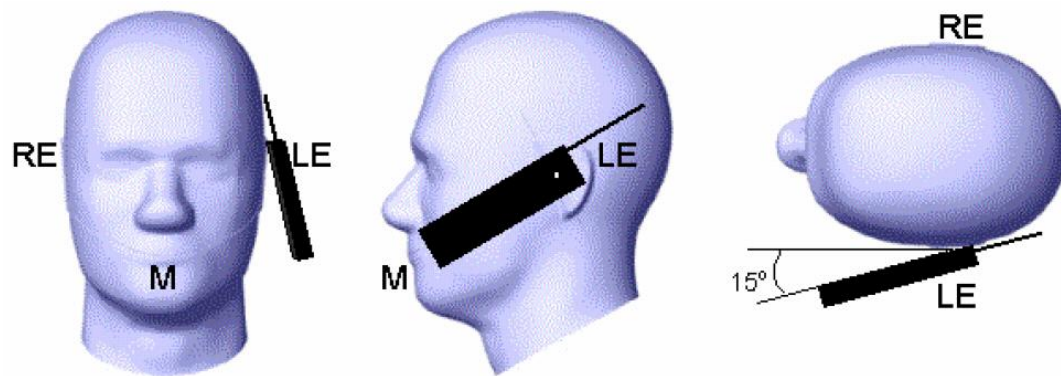
B Midpoint of the width w_b of the bottom of the handset

Picture D.1 Typical “fixed” case headset

Picture D.2 Typical “clam-shell” case headset



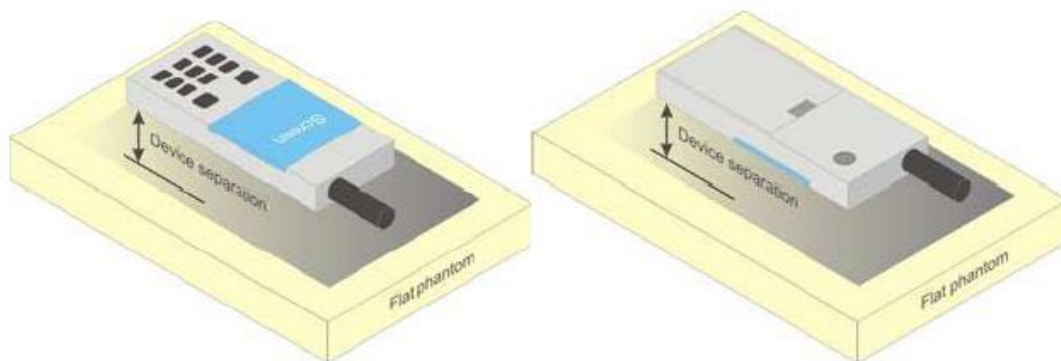
Picture D.3 Cheek position of the wireless device on the left side of SAM



Picture D.4 Tilt position of the wireless device on the left side of SAM

D.2 Body-worn device

A typical example of a body-worn device is a mobile phone, wireless enabled PDA or other battery operated wireless device with the ability to transmit while mounted on a person's body using a carry accessory approved by the wireless device manufacturer.

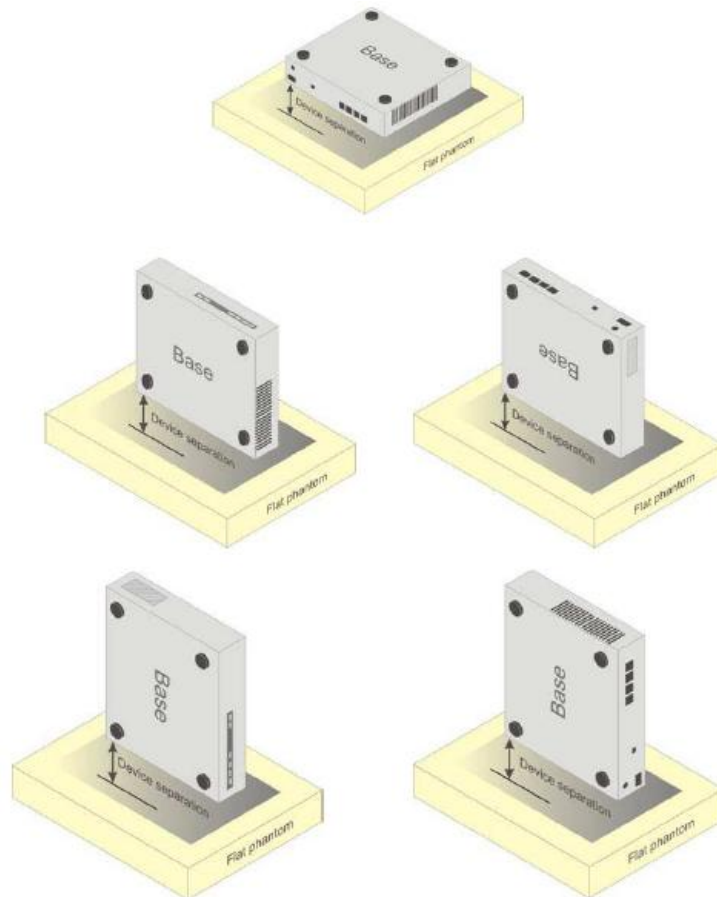


Picture D.5 Test positions for body-worn devices

D.3 Desktop device

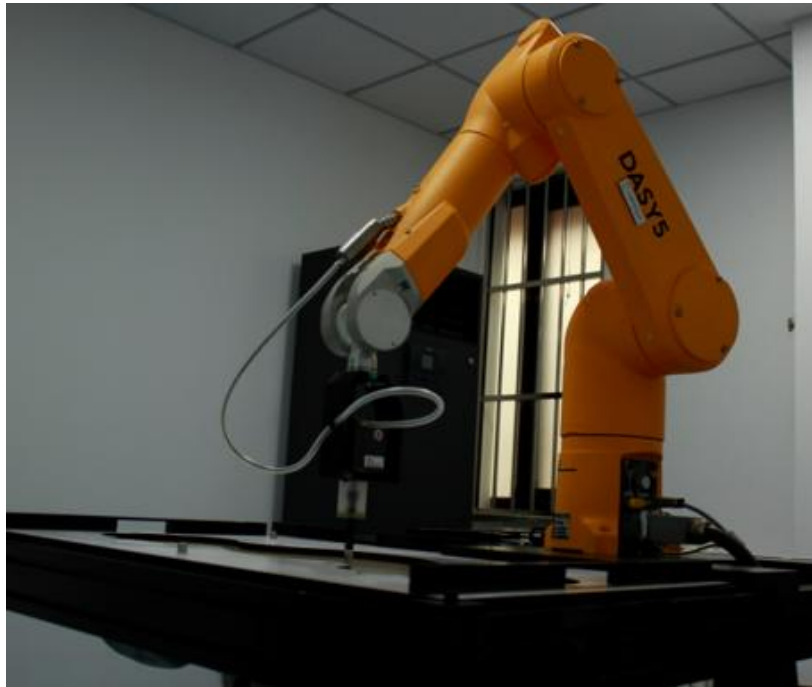
A typical example of a desktop device is a wireless enabled desktop computer placed on a table or desk when used.

The DUT shall be positioned at the distance and in the orientation to the phantom that corresponds to the intended use as specified by the manufacturer in the user instructions. For devices that employ an external antenna with variable positions, tests shall be performed for all antenna positions specified. Picture 8.5 shows positions for desktop device SAR tests. If the intended use is not specified, the device shall be tested directly against the flat phantom.



Picture D.6 Test positions for desktop devices

D.4 DUT Setup Photos



Picture D.7

ANNEX E Equivalent Media Recipes

The liquid used for the frequency range of 800-3000 MHz consisted of water, sugar, salt, preventol, glycol monobutyl and Cellulose. The liquid has been previously proven to be suited for worst-case. The Table E.1 shows the detail solution. It's satisfying the latest tissue dielectric parameters requirements proposed by the IEEE Std 1528 and BS EN IEC/IEEE 62209-1528:2021.

TableE.1: Composition of the Tissue Equivalent Matter

| Frequency (MHz) | 835Head | 835Body | 1900 Head | 1900 Body | 2450 Head | 2450 Body | 5800 Head | 5800 Body |
|------------------------------------|----------------------------------|----------------------------------|----------------------------------|----------------------------------|----------------------------------|----------------------------------|----------------------------------|----------------------------------|
| Ingredients (% by weight) | | | | | | | | |
| Water | 41.45 | 52.5 | 55.242 | 69.91 | 58.79 | 72.60 | 65.53 | 65.53 |
| Sugar | 56.0 | 45.0 | \ | \ | \ | \ | \ | \ |
| Salt | 1.45 | 1.4 | 0.306 | 0.13 | 0.06 | 0.18 | \ | \ |
| Preventol | 0.1 | 0.1 | \ | \ | \ | \ | \ | \ |
| Cellulose | 1.0 | 1.0 | \ | \ | \ | \ | \ | \ |
| Glycol Monobutyl | \ | \ | 44.452 | 29.96 | 41.15 | 27.22 | \ | \ |
| Diethylenglycol monohexylether | \ | \ | \ | \ | \ | \ | 17.24 | 17.24 |
| Triton X-100 | \ | \ | \ | \ | \ | \ | 17.24 | 17.24 |
| Dielectric Parameters Target Value | $\epsilon=41.5$ $\sigma=0.90$ | $\epsilon=55.2$ $\sigma=0.97$ | $\epsilon=40.0$ $\sigma=1.40$ | $\epsilon=53.3$ $\sigma=1.52$ | $\epsilon=39.2$ $\sigma=1.80$ | $\epsilon=52.7$ $\sigma=1.95$ | $\epsilon=35.3$ $\sigma=5.27$ | $\epsilon=48.2$ $\sigma=6.00$ |

Note: There are a little adjustment respectively for 750, 1750, 2600, 5200, 5300 and 5600 based on the recipe of closest frequency in table E.1.

ANNEX F System Validation

The SAR system must be validated against its performance specifications before it is deployed. When SAR probes, system components or software are changed, upgraded or recalibrated, these must be validated with the SAR system(s) that operates with such components.

Table F.1: System Validation for 3846

| Probe SN. | Liquid name | Validation date | Frequency point | Status (OK or Not) |
|-----------|--------------|-----------------|-----------------|--------------------|
| 3846 | Head 750MHz | June 1,2025 | 750MHz | OK |
| 3846 | Head 900MHz | June 1,2025 | 900MHz | OK |
| 3846 | Head 1450MHz | June 2,2025 | 1450MHz | OK |
| 3846 | Head 1750MHz | June 2,2025 | 1750MHz | OK |
| 3846 | Head 1900MHz | June 4,2025 | 1900MHz | OK |
| 3846 | Head 2100MHz | June 4,2025 | 2000MHz | OK |
| 3846 | Head 2300MHz | June 4,2025 | 2300MHz | OK |
| 3846 | Head 2450MHz | June 6,2025 | 2450MHz | OK |
| 3846 | Head 2600MHz | June 6,2025 | 2600MHz | OK |
| 3846 | Head 3300MHz | June 7,2025 | 3300MHz | OK |
| 3846 | Head 3500MHz | June 7,2025 | 3500MHz | OK |
| 3846 | Head 3700MHz | June 7,2025 | 3700MHz | OK |
| 3846 | Head 3900MHz | June 7,2025 | 3900MHz | OK |
| 3846 | Head 4100MHz | June 8,2025 | 4100MHz | OK |
| 3846 | Head 4400MHz | June 8,2025 | 4400MHz | OK |
| 3846 | Head 4600MHz | June 8,2025 | 4600MHz | OK |
| 3846 | Head 4800MHz | June 8,2025 | 4800MHz | OK |
| 3846 | Head 4950MHz | June 9,2025 | 4950MHz | OK |
| 3846 | Head 5250MHz | June 9,2025 | 5250MHz | OK |
| 3846 | Head 5600MHz | June 9,2025 | 5600MHz | OK |
| 3846 | Head 5750MHz | June 9,2025 | 5750MHz | OK |

ANNEX G Probe Calibration Certificate

Probe 3846 Calibration Certificate



In Collaboration with
TTL s p e a g
CALIBRATION LABORATORY

Add: No.52 HuaYuanBei Road, Haidian District, Beijing, 100191, China
Tel: +86-10-62304633-2117
E-mail: emf@caict.ac.cn http://www.caict.ac.cn




中国认可
国际互认
校准
CALIBRATION
CNAS L0570



Client **CTTL**
Beijing

Certificate No: **25J02Z000277**

CALIBRATION CERTIFICATE

Object: **EX3DV4 - SN : 3846**

Calibration Procedure(s): **FF-Z11-004-02**
Calibration Procedures for Dosimetric E-field Probes

Calibration date: **May 28, 2025**

This calibration Certificate documents the traceability to national standards, which realize the physical units of measurements(SI). The measurements and the uncertainties with confidence probability are given on the following pages and are part of the certificate.
All calibrations have been conducted in the closed laboratory facility: environment temperature(22±3)°C and humidity<70%.
Calibration Equipment used (M&TE critical for calibration)

| Primary Standards | ID # | Cal Date(Calibrated by, Certificate No.) | Scheduled Calibration |
|--------------------------|--------------------|---|-----------------------|
| Power Meter NRP2 | 106277 | 18-Oct-24(CTTL, No.24J02X101459) | Oct-25 |
| Power sensor NRP8S | 104291 | 18-Oct-24(CTTL, No.24J02X101459) | Oct-25 |
| Power sensor NRP8S | 104292 | 18-Oct-24(CTTL, No.24J02X101459) | Oct-25 |
| Reference 10dBAttenuator | 18N50W-10dB | 22-Jan-25(CTTL, No.25J02X000465) | Jan-27 |
| Reference 20dBAttenuator | 18N50W-20dB | 22-Jan-25(CTTL, No.25J02X000466) | Jan-27 |
| Reference Probe EX3DV4 | SN 7464 | 28-Jan-25(SPEAG, No.EX-7464_Jan25) | Jan-26 |
| DAE4 | SN 1555 | 16-Aug-24(SPEAG, No.DAE4-1555_Aug24) | Aug-25 |
| Secondary Standards | ID # | Cal Date(Calibrated by, Certificate No.) | Scheduled Calibration |
| SignalGenerator MG3700A | 6201052605 | 12-Jun-24(CTTL, No.24J02X005419) | Jun-25 |
| SignalGenerator APSIN26G | 181-33A6D0700-1959 | 27-Mar-25(CTTL, No.25J02X001962) | Mar-26 |
| Network Analyzer E5071C | MY46110673 | 18-Dec-24(CTTL, No.24J02X103932) | Dec-25 |
| Reference 10dBAttenuator | BT0520 | 15-May-25(CTTL, No.25J02X003069) | May-27 |
| Reference 20dBAttenuator | BT0267 | 15-May-25(CTTL, No. 25J02X003070) | May-27 |
| OCP DAKS | SN 0015 | 09-Oct-24(SPEAG, No. OCP-DAKS-0015_Oct24) | Oct-25 |

| | Name | Function | Signature |
|----------------|-------------|--------------------|---|
| Calibrated by: | Yu Zongying | SAR Test Engineer |  |
| Reviewed by: | Lin Jun | SAR Test Engineer |  |
| Approved by: | Qi Dianyuan | SAR Project Leader |  |

Issued: June 03, 2025

This calibration certificate shall not be reproduced except in full without written approval of the laboratory.

Certificate No: 25J02Z000277

Page 1 of 9