

# Micro Keyboard

## User's Manual

Bluetooth wireless Micro keyboard with integrated touchpad



## Contents

<b>1. WELCOME.....</b>	<b>3</b>
<b>2. PRODUCT DESCRIPTION .....</b>	<b>3</b>
<b>3. PRODUCT PACKAGE .....</b>	<b>3</b>
<b>4. OVERVIEW .....</b>	<b>4</b>
<b>5. HARDWARE INSTALLATION.....</b>	<b>5</b>
5.1. Connecting your keyboard .....	5
5.2. Recharging battery.....	6
<b>6. DRIVER INSTALLATION AND USE .....</b>	<b>7</b>
6.1. Microsoft Windows Mobile OS .....	7
6.2. Google Android OS .....	11
6.3. Nokia Symbian OS.....	14
6.4. Desktop Windows OS with IVT Bluetooth stack.....	14
6.5. Desktop Windows OS with Broadcom Bluetooth stack.....	15
6.6. Linux OS .....	16
6.7. iPhone, iPad .....	168
<b>7. USING YOUR KEYBOARD .....</b>	<b>22</b>
7.1. Function overview .....	22
7.2. LED indicator .....	22
7.3. Power On /Off .....	23
7.4. Using “Fn” key.....	23
7.5. Using media control key.....	23
7.6. Laser Pointer/flashlight function .....	23
7.7. Backlight .....	24
7.8. Sleeping and waking up .....	24
<b>8. TIPS AND TROUBLESHOOTING.....</b>	<b>24</b>
<b>9. IMPORTANT NOTES.....</b>	<b>25</b>
9.1. FCC statement .....	25
9.2. CE.....	25
<b>10. APPENDIX SPECIFICATION .....</b>	<b>25</b>

## 1. Welcome

Thank you for purchasing the Mini Bluetooth Keyboard!

This document contains instruction for installing and using the keyboard.

## 2. Product description

The keyboard takes total control of your PC entertainments from the palm of your hands. Sit in sofa and enjoy movies and music, share photos, surf the web.

Convenient media controls make the perfect remote control for HTPC entertainment.

Advanced Bluetooth wireless technology makes the keyboard be compatible with not only the computer running Windows or Linux but also handhelds running Android, Windows Mobile Pocket PCs, Symbian S60 Operating system, or Apple iPad, Apple iPhone with 4.0 OS.

You can use it for emails, chat, or to enjoy your favorite games from your mobile phone.

Backlight allows effortless text entry, even in low light.

Hi-grade Li-polymer battery recharge fast and last longer-----up to one month between charges.

While enjoying the movie in low light, the built-in flashlight will give you more convenience!

Style, comfort and portability, the keyboard will innovate your life.

## 3. Product package

The retail package contains:

Keyboard

Installation CD

User Quick Start

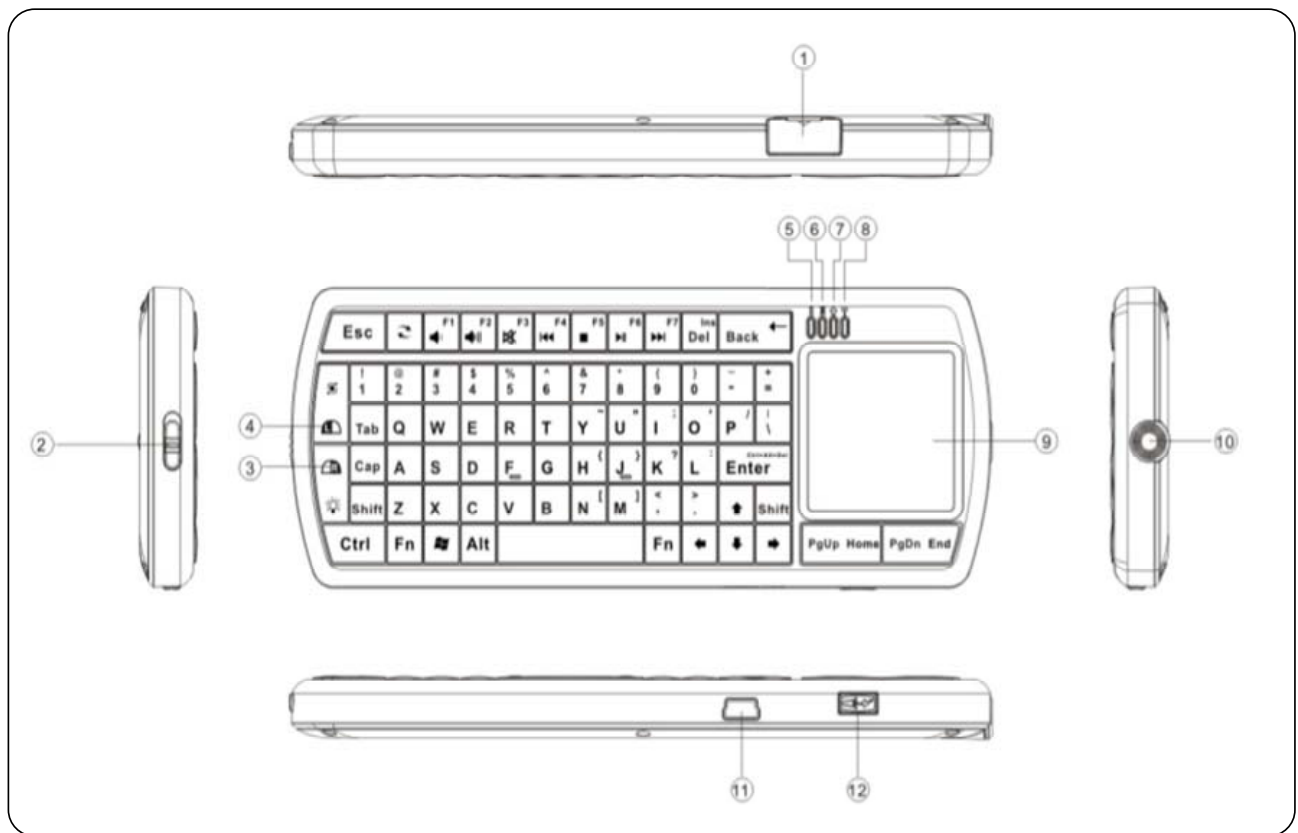
Power USB2.0 Cable

USB Bluetooth receiver

Dummy USB receiver

If any items are damaged or missing, please contact your vendor.

## 4. Overview



- ① Bluetooth receiver dongle
- ② Power Switch
- ③ Mouse right key
- ④ Mouse left key
- ⑤ Charging indicator
- ⑥ Battery low indicator
- ⑦ Caps Lock indicator
- ⑧ Wireless communication indicator
- ⑨ touchpad
- ⑩ Flashlight/laser pointer
- ⑪ Charging mini USB port
- ⑫ Switch of flashlight/laser pointer

## 5. Hardware Installation

### 5.1. Connecting your keyboard

#### 5.1.1. Take out the USB dongle.

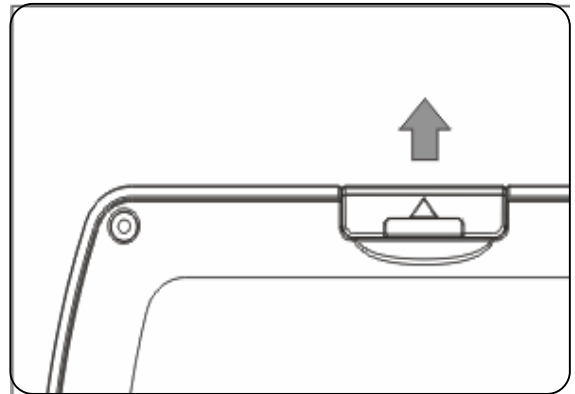


Figure. 1

#### 5.1.2. Connect Bluetooth dongle

Plug the Bluetooth dongle into a USB port on your computer.

Note: The Bluetooth dongle is not required for smart device or PC with built-in Bluetooth wireless technology.

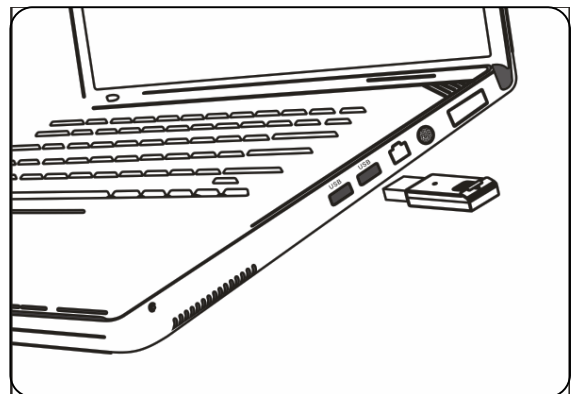


Figure. 2

#### 5.1.3. Put the dummy Bluetooth receiver into the compartment inside the case.

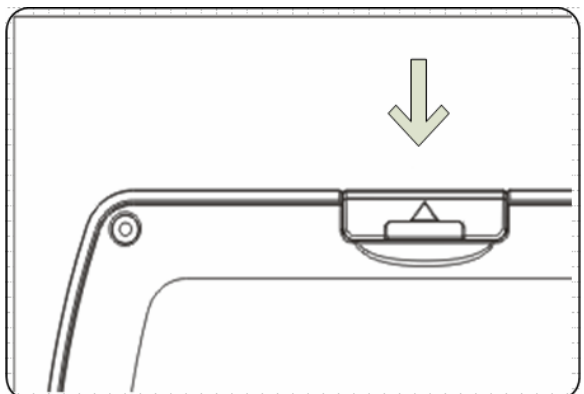


Figure. 3

5.1.4. Move the power switch to ON.

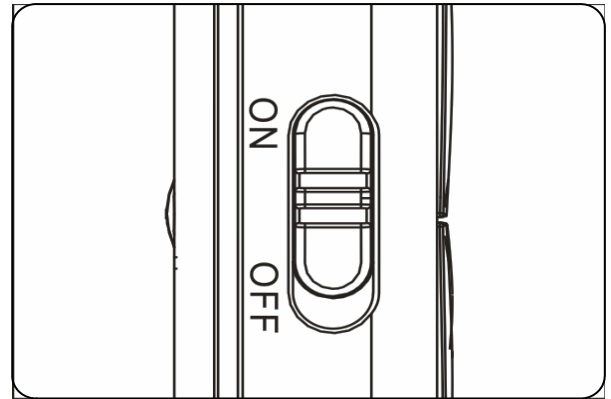
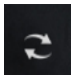



Figure. 4

5.1.5. Pairing

Click the PAIR/CONNECT  key, the communication indicator  will blink on 2S and off 1S, indicating the keyboard enter pairing status. Follow the instruction of the host device for discovering Bluetooth device. Once the pairing is established successfully, the yellow LED will turn off, you can use the keyboard and touchpad.

5.1.6. Congratulation

Congratulation! You have succeeded in installation the Keyboard, please enjoy your entertainment from anywhere!

**5.2. Recharging battery**

The device with Hi-grade Li-polymer battery, please use only approved data lines and chargers.

Plug the power USB cable into the power port on the side of the Keyboard.

Plug the power USB cable into the USB port on the side of PC to start charging the Hi-grade Li-polymer battery.

The red LED will turn on indicating charging status. A full charge is about four hours for up to one month of use. A ten-minute charge provides about one day of use.

When the charging is completed, the charging LED

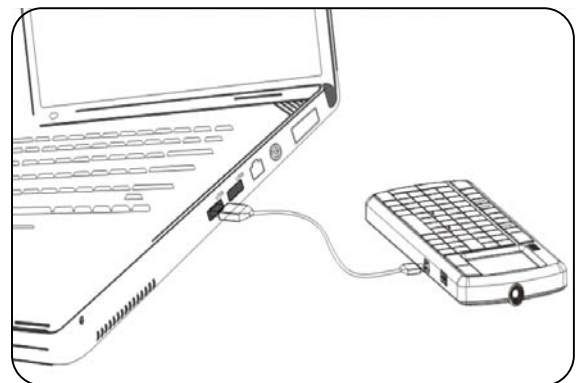


Figure. 5

will turn off, please pull out the charging cable from AC power or computer, and then remove the charger cable from keyboard.

Note: Before the first time use of the keyboard, the battery must be fully charged.  
When the capacity of battery is low, the low-voltage LED will flicker to warning till the battery exhausts.

## 6. Driver installation and use

### 6.1. Microsoft Windows Mobile OS

Connect your mobile device to your Desktop computer by using the USB port

#### 6.1.1. On your desktop:

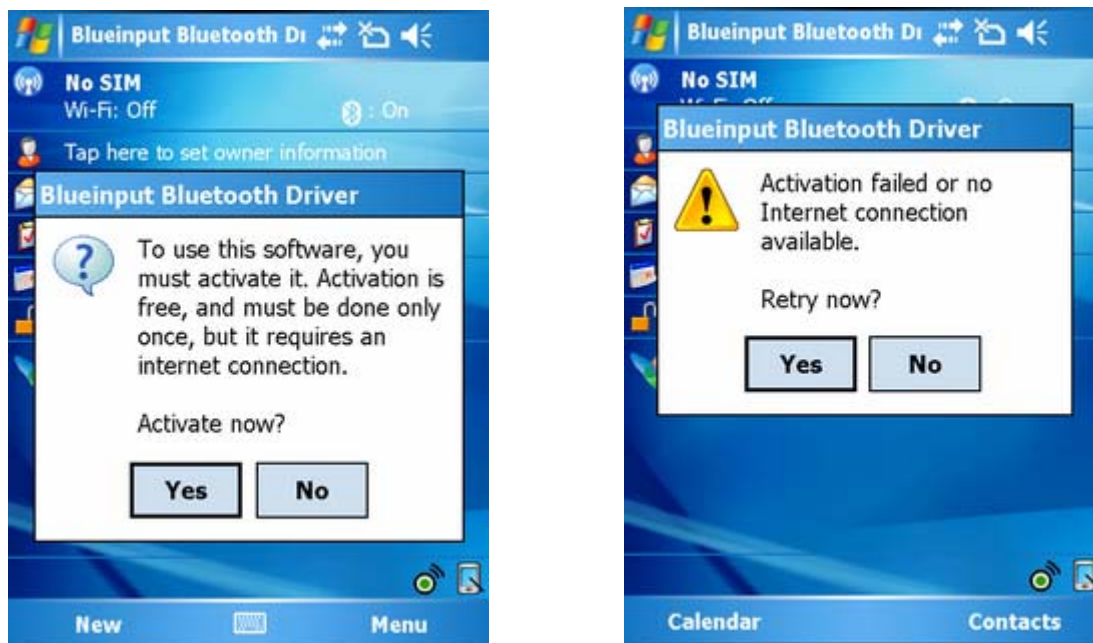
- Insert Drivers CD and open the CD from “My computer”.
- Locate the “Mobile” folder and inside the “windowmobile.cab” (Bluetooth input driver) CAB file.
- Open ActiveSync on your desktop and Click Explore
- Copy the CAB file to your mobile device. You can do this by dragging and dropping the file from the desktop folder to My Documents folder on your device.

#### 6.1.2. On your Windows Mobile device:

- Go to Start > Programs > File Explorer > My Documents
- Run the windowmobile.cab file (tap on it)

The Keyboard Driver will now install on your device. At the end of the installation, the setup will require to reset.

The first time you install Keyboard Driver on your Windows Mobile device, you'll see a prompt to activate the software:



If you press NO or if the Internet is not available, Activation will fail and you won't be able to use this software.

Make sure your Windows Mobile device is connected to the Internet and press YES. You only need to do this once, after the installation.

### 6.1.3. Configuration and Troubleshooting

- After the software is successfully installed on your device, you need to pair the Bluetooth Keyboard.
- Make sure your Bluetooth keyboard is in the pairing state.
- On your device, open Bluetooth Devices, and click “Add new”



- After the keyboard is discovered, select it, and then tap on “Next”





## Bluetooth wireless Micro keyboard with integrated touchpad

---

- When prompt for passkey, leave the passcode field blank and tap “Next” (if this fails, enter 0000 as a passcode and press Next)



- At this step select the “Input device” service and tap “Finish”.



- Go to the Software settings Panel, and tap “Connect”.

Here are a few solutions for the error messages that might appear in the software:

- ◆ The software is not responding. You need to reinstall this software."  
This error is caused by a problem with the communication between the software components. You need to check if your Windows Mobile Device is compatible with the software, and to try to reinstall the software.
- ◆ Bluetooth is turned off. To use the software, please enable your Bluetooth module!"  
Make sure you are using the software on a smart phone with Windows Mobile (5.0 or newer) and the Microsoft Bluetooth Stack. Then enable Bluetooth before using the Software.
- ◆ No active Input Device found. You need to pair a device, using the Bluetooth control panel."  
Make sure your Bluetooth keyboard is correctly paired to your smart phone. If this error appears while your keyboard is paired, redo the pairing.

### 6.1.4. Settings panel

Open the setting panel

To open the settings panel, go to Start->Settings->System TAB, and tap the icon named "Bluetooth Input Driver"



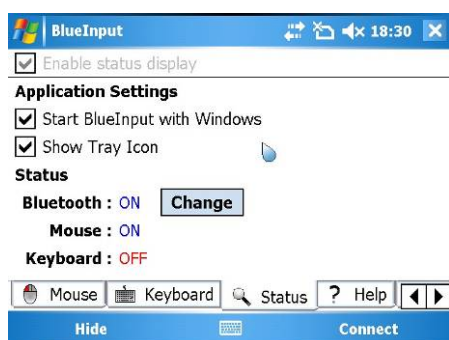
The Settings panel displays several pages, for better access to the software options:

### 6.1.5. Keyboard Page



This page offers two options: enable / disable the keyboard functionality and enable / disable keyboard sounds.

### 6.1.6. Status Page



Here you can view the status and configure the driver to start when Windows Mobile starts (autostart) and you can enable / disable the Tray icon. The tray icon allows quick access to the Settings panel.

### 6.1.7. About



The about page displays the software version and some other useful information.

## 6.2. Google Android OS

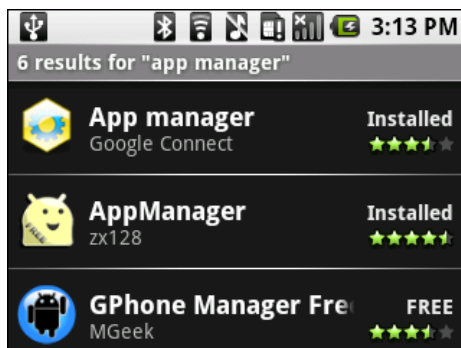
### Installation

#### 6.2.1. On your desktop:

- Insert Drivers CD and open the CD from “My computer”
- Open “Android” folder and copy the “android.apk” file into your Android’s memory card

#### 6.2.2. On your Android device:

- Open “Market”, and install the “AppManager” Software , or any other Android manager software:

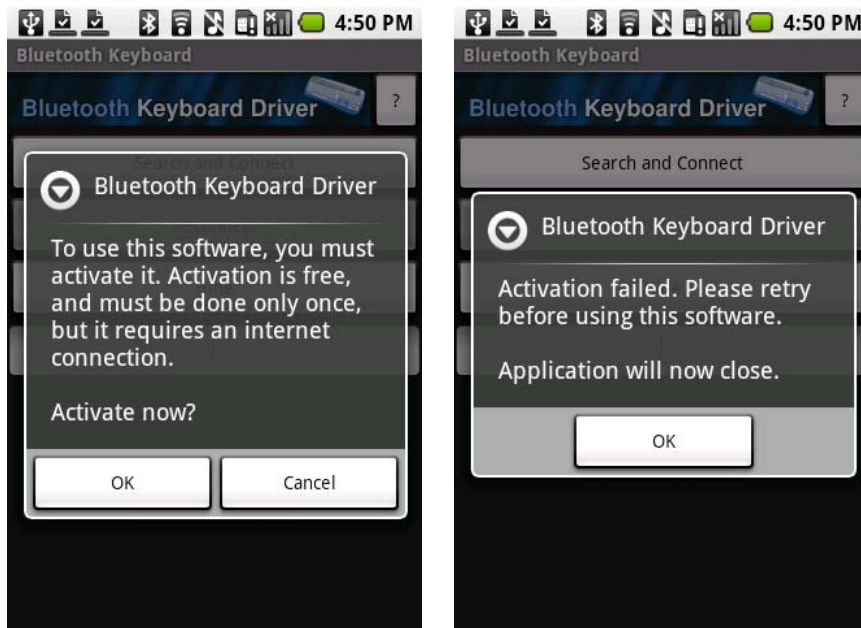


- Open AppManager software and tap the MENU button
- Tap Install from SD option
- Run android.apk file

The first time you install the Bluetooth Keyboard Driver on your Android device, you’ll see a prompt to activate the software:

## Bluetooth wireless Micro keyboard with integrated touchpad

---



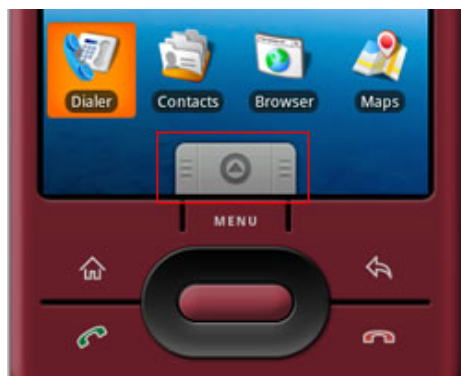
If you press Cancel or if the Internet is not available, Activation will fail and you won't be able to use this software.

So please make sure the Android is connected to the internet and press OK. You only need to do this once, after the installation.

- After the Bluetooth keyboard Driver is successfully installed you need to pair the Keyboard with the Android device.

Make sure your Bluetooth keyboard is in the pairing state.

Slide your Android device's menu arrow and open the menu.



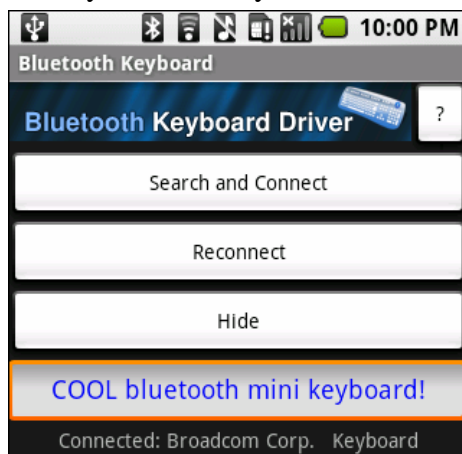
- Locate the Bluetooth Keyboard Driver icon and tap on it.



## Bluetooth wireless Micro keyboard with integrated touchpad

---

On your android device make sure Bluetooth is turned on, then tap “Search and Connect”. The software automatically finds the Bluetooth keyboard and connects to it. When connection is done, you can find your Bluetooth keyboard’s name “Micro keyboard” at the bottom:



Congratulations! The Bluetooth keyboard is now connected and you can test it by entering a text in the test zone as shown in the previous picture.

### 6.2.3. Other Functions

Reconnect:

If your device loses the connection with the keyboard (the message “keyboard disconnected” is displayed as in the picture below), you can reconnect by pressing the interface Reconnect button.



Hide

Hides the Bluetooth Driver interface, but keeps the program alive, in the background, so you can continue using the keyboard

Question mark (?) / About / Help

Opens the About Dialog where you can see more details on this software.

### 6.3. Nokia Symbian OS

#### Installation

##### 6.3.1. On your desktop:

Insert Drivers CD and open the CD from “My computer”

Open “Nokia Wireless Keyboard Application” folder and choose your device model or Operating system version, copy the .sis file into your device’s memory card or you can connect your Nokia device to your computer USB port and copy the file directly.

##### 6.3.2. On your Symbian device:

- Find the .sis file (on mobile device or memory card) and press "OK" button, follow the hints to finish the installation
- Run the installed application and search the nearby Bluetooth Keyboard.

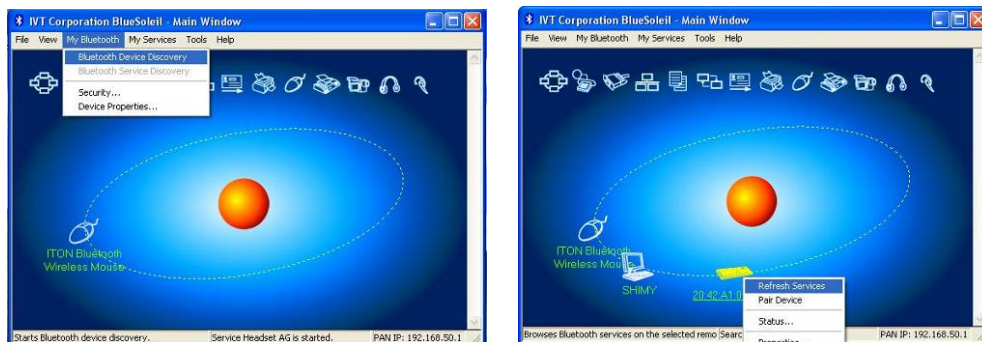


- After paired and connected, you will have to set the keyboard layout. If layout is not set correctly, the keyboard might not function as expected.

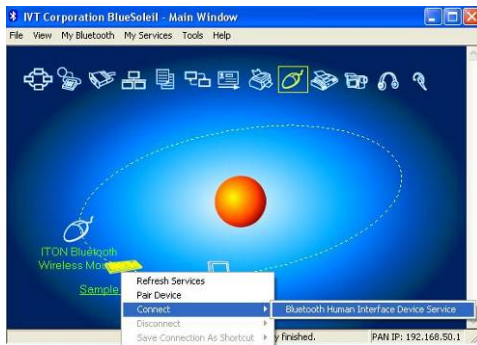
### 6.4. Desktop Windows OS with IVT Bluetooth stack

#### Configuration

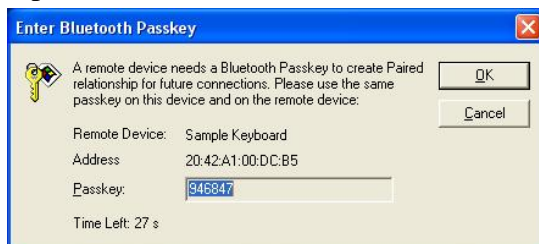
- Make sure that the Bluetooth function is active on your PC. Double click the Bluetooth Icon, open the Management window, select “Bluetooth Device discovery” or click the Round Ball in the middle of the window.



- Right click the Bluetooth Keyboard found and select “Refresh Services”.



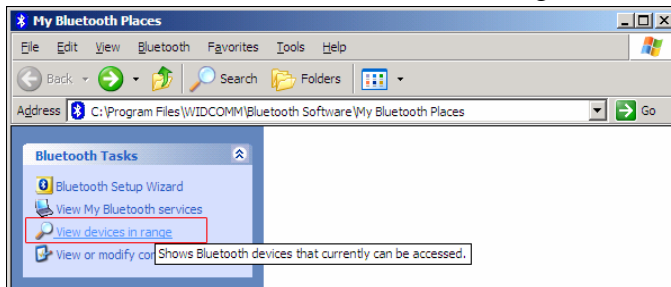
- Right click the Bluetooth Keyboard again and select “Connect-Bluetooth Input Service”.
- On the popup dialog you’ll see a code. Input the code with your Bluetooth Keyboard and press enter or OK.



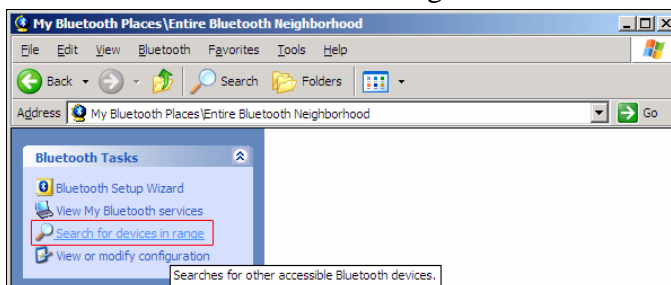
The system will auto install the HID drivers for the Bluetooth Keyboard.

## 6.5. Desktop Windows OS with Broadcom Bluetooth stack Configuration

- Make sure that the Bluetooth function is active on your PC. Double click the Bluetooth icon, then click “View devices in range”

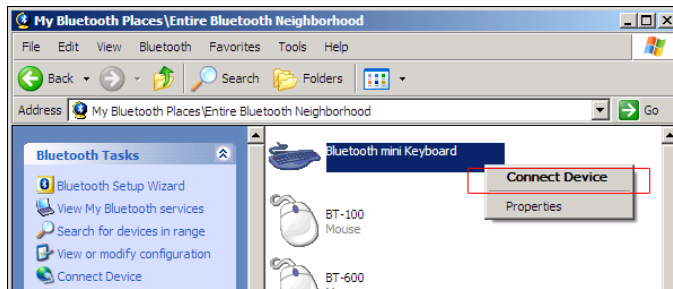


- Click “Search devices in range” and wait until the Bluetooth keyboard is discovered.

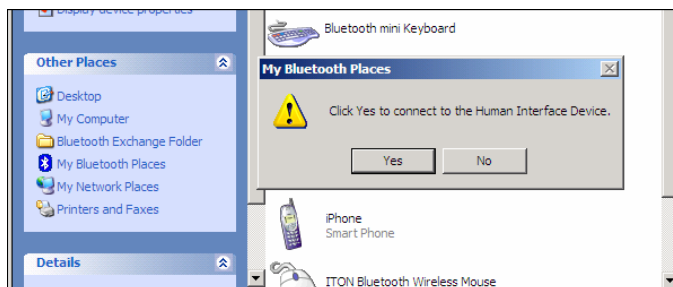


- Right clicking the detected keyboard brings a popup menu. Click “Connect device”.

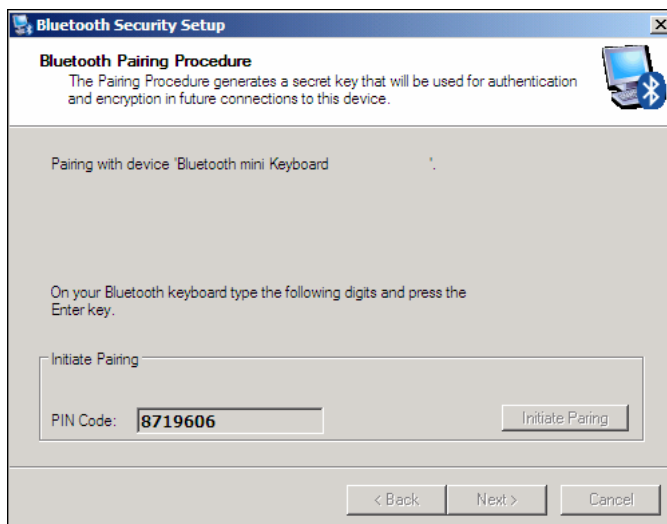




- Press YES to connect to the “Human interface Device”



- Using the Bluetooth keyboard, type the number displayed on the screen, then press enter:



Now the keyboard is connected, you can start using it with your applications.

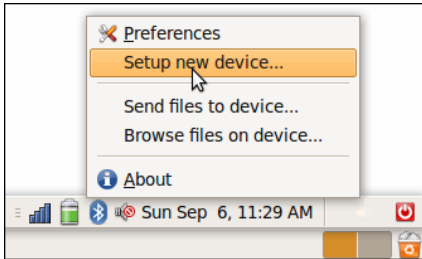
## 6.6. Linux OS

### Configuration

There are several Linux distributions available. This guide was designed for Ubuntu linux, but can be easily adapted for other versions. Your desktop computer must be equipped with a Bluetooth module (built in, or USB Dongle).

- Make sure that the Bluetooth function is active on your PC. Click the Bluetooth icon and select “Setup new device”



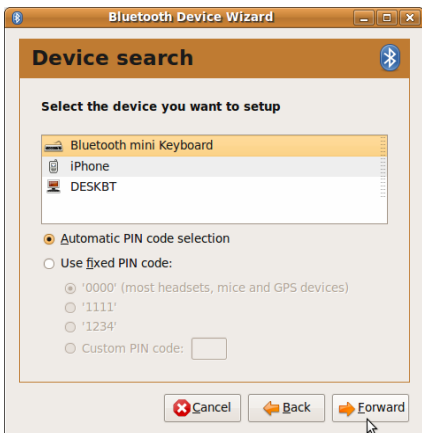


- A wizard window opens, read the text and press “Forward”

- 



- Wait until the keyboard is discovered, then select it and press “Forward”



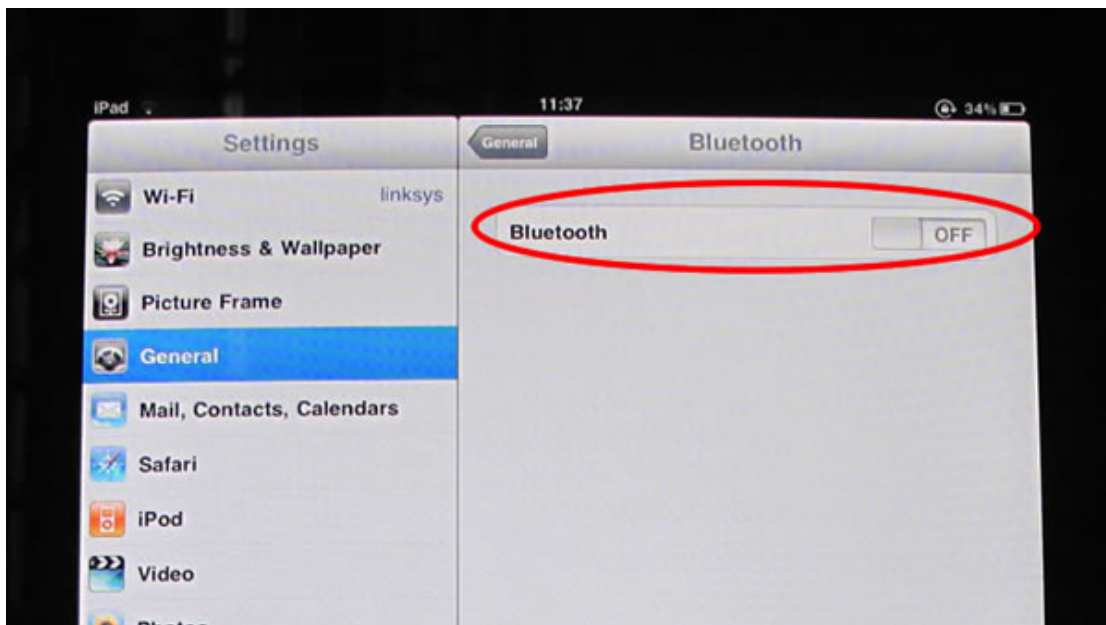
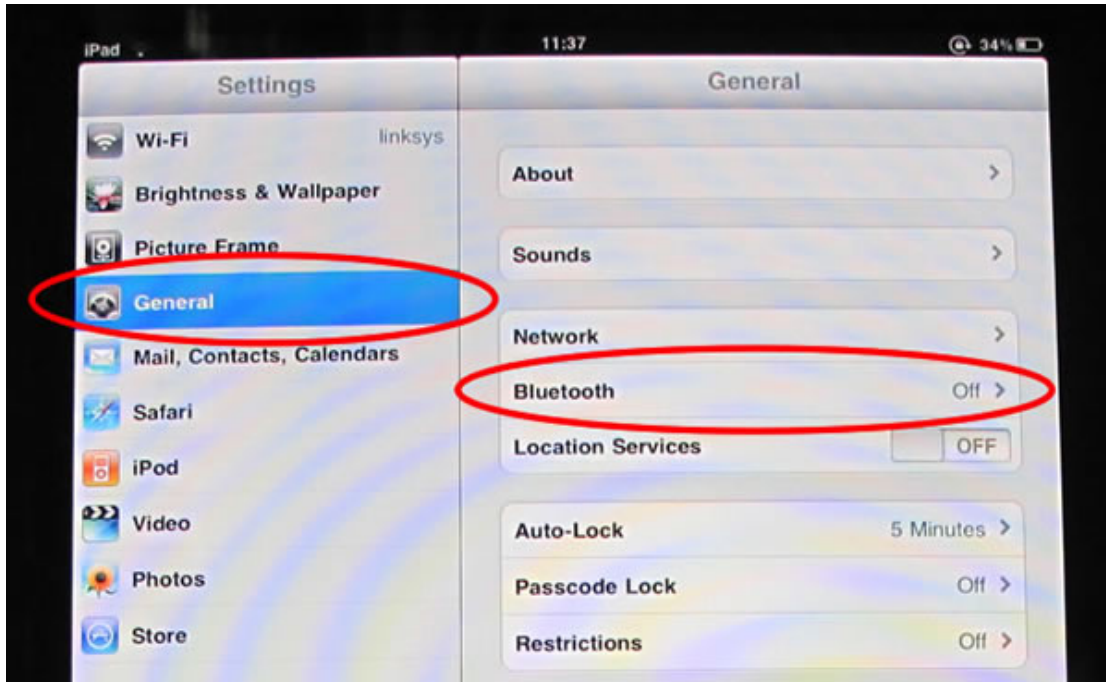
- Type the code display on the Mini Bluetooth keyboard, then press Enter



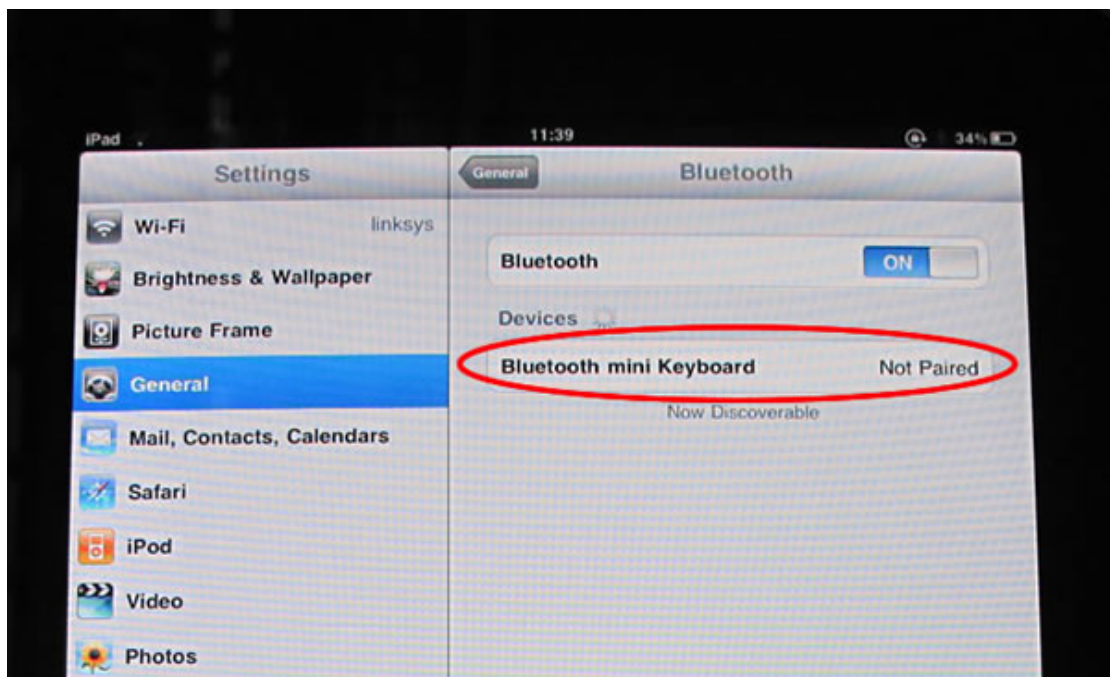
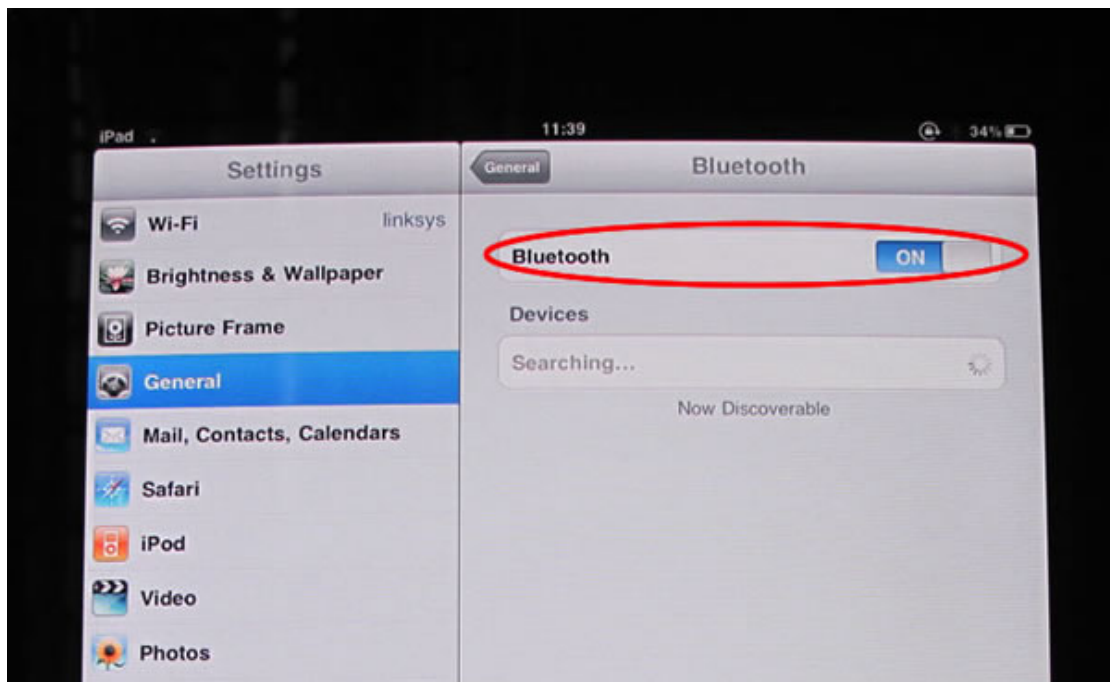
If the code was correctly entered, a confirmation message is displayed. Now you can start using your Bluetooth keyboard.

#### 6.7. iPhone,iPad with OS 4.0

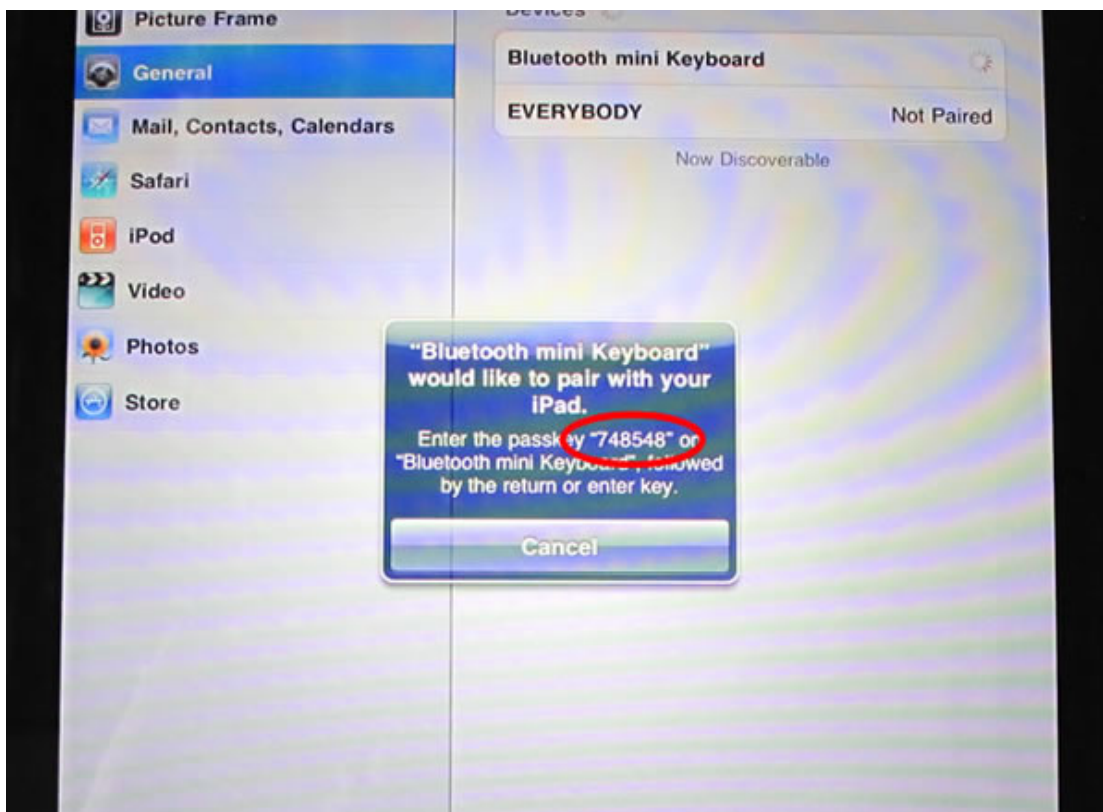
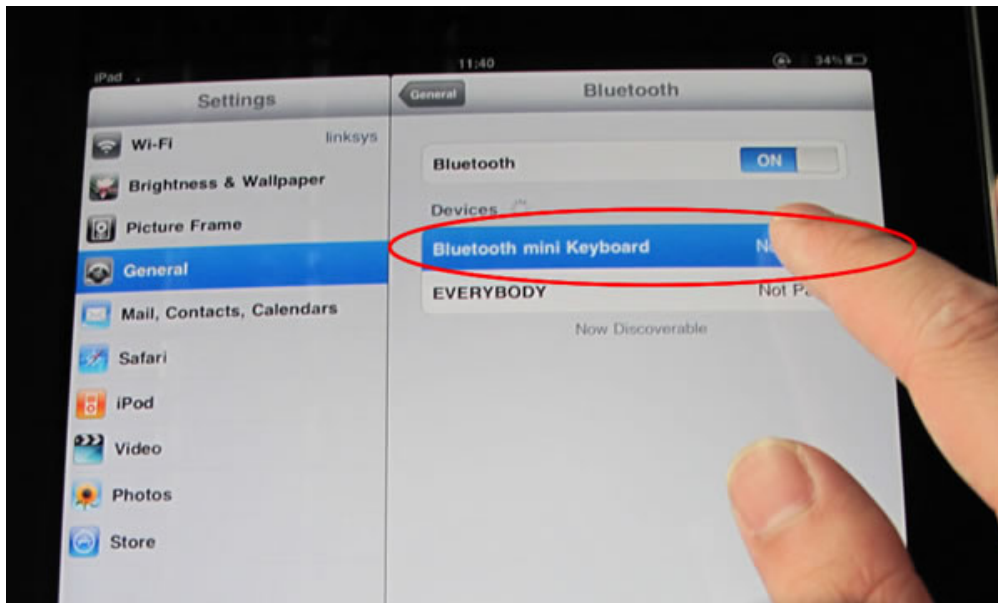
- Put the power switch on keyboard to “ON”, and press pairing key on the keyboard.
- Enter "Setting"---"General", turn on the bluetooth:



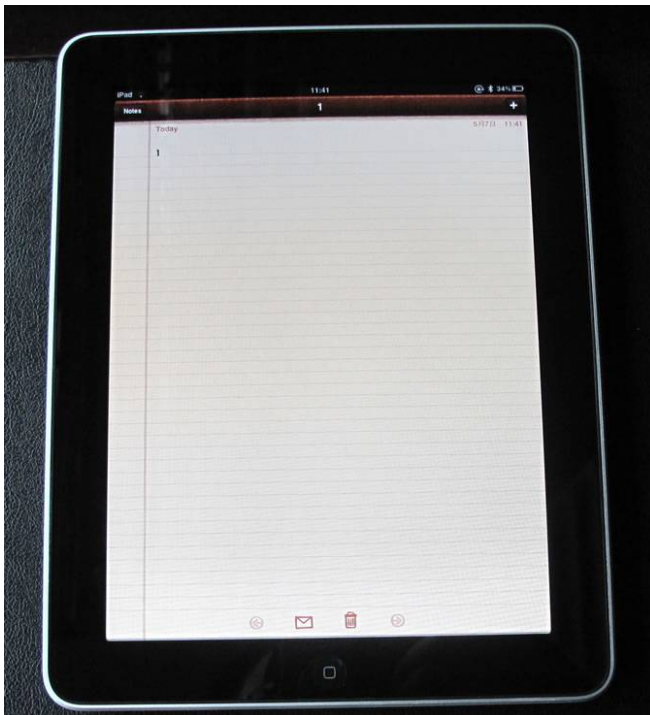
- After turning on the bluetooth, it will search bluetooth devices automatically:



- After finding "Bluetooth mini Keyboard", press the device, it will start connecting, and there will be a password displayed:



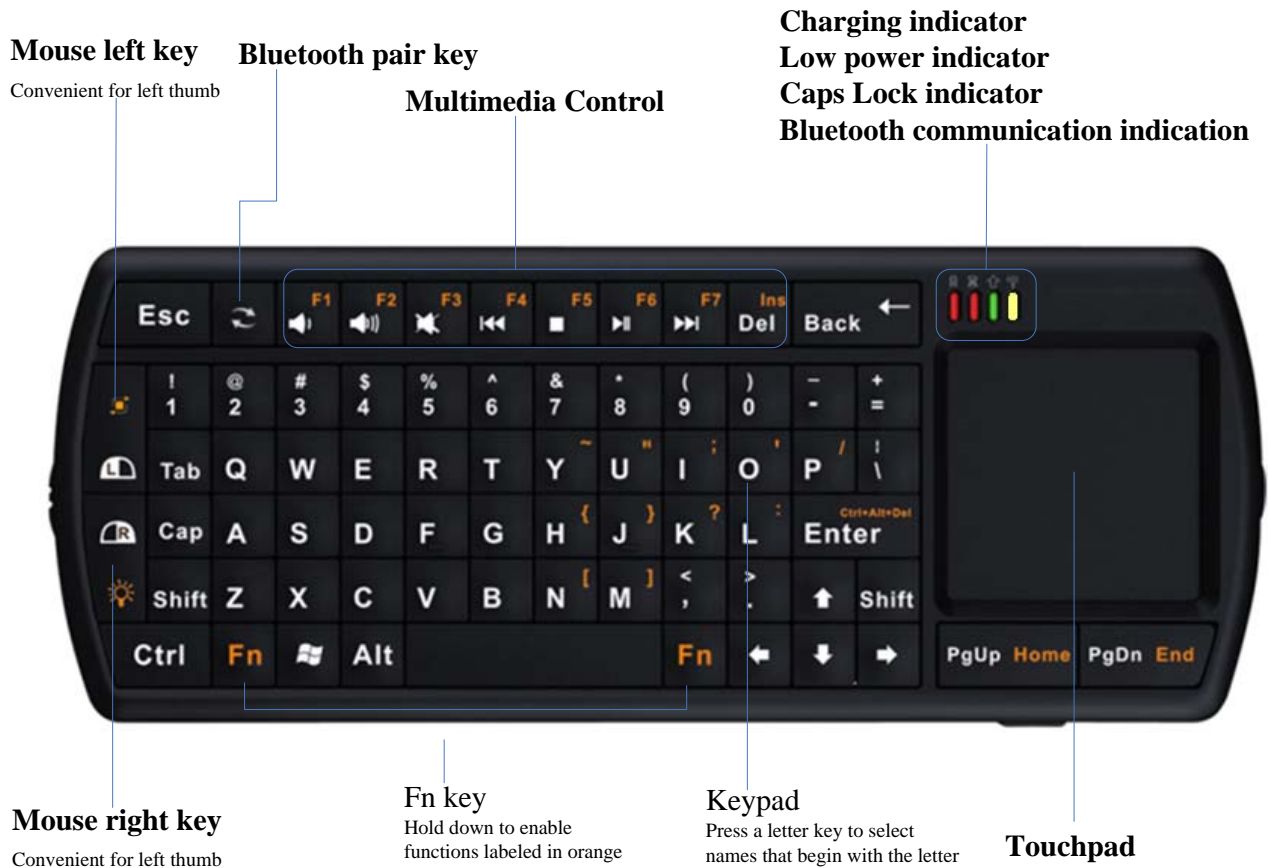
- Press the password in your Bluetooth mini Keyboard, and "Enter", it will connect with your iPad, now you can use your Bluetooth mini Keyboard to input words for your iPad:





## 7. Using your keyboard

### 7.1. Function overview



### 7.2. LED indicator

- Charging indicator



Red LED bright when charging get start, and the RED LED turns off when the battery is full charged.

- Battery low indicator



Red Led will glint when the battery in low voltage, means the battery need to be recharged.

- Caps Lock indicator



When the LED is in green, it is in Capital status.



- Wireless communication indicator



When turn on the device, the yellow LED will bright for 5 seconds.



Press the pairing key, yellow LED glints, indicating the keyboard is in pairing status, yellow LED turn off when successfully pairing.

### 7.3. Power On /Off

Push the power switch  to the “ON” position, the yellow LED  will bright for 5 seconds, the backlight will bright as well. When the yellow LED turn off, you can use it as a QWERTY keyboard, use the touchpad to control the cursor as a mouse. If you don't use the keyboard, please push the power switch to “OFF” position to save the energy.


### 7.4. Using “Fn” key



- Hold down the “Fn” key to enable the function labeled in orange.
- There are two special functional key on the mouse left and right key as below:

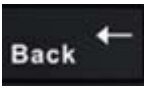

- ◆ Press  and , the direction of the touchpad will change to vertical as

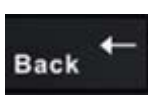



, if you're using the Keyboard as a presenter, it's very useful for your operating

the Keyboard with one hand, the original direction is .

- ◆ Press  and , Backlighting will turn on or off. Backlighting allows effortless text entry, even in low light.

- ◆ Press  and , the speed of touchpad will be double than default, Press



and  again, the speed of touchpad will be back to default.

### 7.5. Using media control keys

The media control keys provide you good feeling and convenience when you're watching film through PC, adjust the volume, speed and so on just stay in Sofa, no need leave your seat to go to your PC.

## 7.6. Laser Pointer/flashlight function

This device provide optional version of Laser pointer for presenter and flashlight function for home use, the standard is with LED flashlight, if in dark environment, you can use the LED flashlight to get light. And if you want to use this device as a presenter, you can choose laser pointer before buy from the vendor.

## 7.7. Backlight

The device is with backlight, backlighting makes comfortable in typing, even in low light.

There're two ways to control the backlit – by software and by manual control mode.

When the connection is successful, backlight auto turn on, and will auto turn off after 5 seconds to save power and increase battery life. If you want to turn on the backlight, just need to press “Fn”+ “right mouse key”

## 7.8. Sleeping and waking up

If you don't operate the keyboard for one minute, the keyboard would go to sleep mode for saving power, after thirty minutes, the keyboard would go to deep sleep mode for more saving power, please press any key to wake up the keyboard except touchpad.

## 7.9. Function of Combo Keys

### 7.9.1. Nokia S60 System

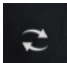
No	Combo Keys	Function
1	Alt + Tab	Menu key
2	Left shift + left win	Call key
3	Ctrl + Enter	Ok key

### 7.9.2. Android System

No	Combo Keys	Function
1	Alt + z	menu
2	F2	Call

## 8. Tips and troubleshooting

If a problem should occur, you can quickly solve it following one of the way showed as below:

- Restart your computer or console.
- Plug the USB mini-receiver into a different USB port.
- Restart your keyboard
- Recharge the keyboard
- Press the connect button  to discover Bluetooth host.



## 9. Important Notes

### 9.1. FCC statement

This equipment has been tested and found to comply with the limits for a Class B digital device, pursuant to Part 15 of the FCC Rules; these limits are designed to provide reasonable protection against harmful interference in a residential installation. This equipment generates, uses, and can radiate radio frequency energy and, if not installed and used in accordance with the instructions, may cause harmful interference to radio communications. However, there is no guarantee that interference will not occur in a particular installation. If this equipment does cause harmful interference to radio or television reception, which can be determined by turning the equipment off and on, the user is encouraged to try to correct the interference by one or more of the following measures:

- Reorient or relocate the receiving antenna.
- Increase the separation between the equipment and receiver.
- Connect the equipment into an outlet on a circuit different from that to which the receiver is connected.
- Consult an authorized dealer or service representative for help.

Changes or modifications not expressly approved by the party responsible for compliance could void the user's authority to operate the equipment

RF warning statement:

The device has been evaluated to meet general RF exposure requirement. The device can be used in portable exposure condition without restriction.



### 9.2. CE

Europe – EU Declaration of Conformity for Bluetooth wireless keyboard with integrated touchpad



Products intended for sale within the European Union are marked with the CE Marking, which indicates compliance with the applicable Directives and European Norms, and amendments, identified below.

Hereby, Hong Kong Tide technology Co., Ltd, declares that this Bluetooth wireless keyboard is in compliance with the essential requirements and other relevant provisions of Directive 1999/5/EC.

## 10. Appendix Specification

- Backlit keys

Backlighting lets you see what you're typing—even in low light.

- Touch Pad
  - ◆ Dimension: 31\*31 mm
  - ◆ Resolution: 400 DPI
  - ◆ The touch pad can be used to point and click.
  - ◆ 90 degree rotated, you can use the touch pad vertically or horizontal.

- Laser Pointer/flashlight function

This device provide optional version of Laser pointer for presenter and flashlight function for home use, the standard is with LED flashlight.

While enjoying the movie in low light, the built-in flashlight will give you more convenience! When you're giving a lecture, the built-in laser pointer helps you easy to point the content on the projector

- Dimensions and Weight

Keyboard dimension: 155mm x 61mm x 12mm

Net weight: 102g (included wireless receiver)

Color box dimension:

103\*192\*53 mm

Gross weight: 380g

- Connectivity

Bluetooth® 2.0 wireless technology

Point-to-point technology pre-paired with keyboard. (Does not act as a hub.)

As far as 10 meters control distance

- Power and Battery

30 days (battery standby time)

Full-charge: Takes about 4 hours.

Fast-charge: Takes about 10 minutes for 1 day of use

850 mAH lithium polymer battery

Power consumption (without backlit) : <12mA

Standby power consumption: <1.3mA

- Technical Specifications

- ◆ Control your PC entertainment from the palm of your hands!

- Palm-sized dimensions

- Nano dongle

- Rechargeable hi-grade Li-polymer battery

- Backlit keys for typing in the dark

- 71 back lighted keys

- Easy access of multi-media functions

- Integrated Touch Pad for accurate cursor control

- Support Windows, Mac and Linux based laptops, PC's, tablets and notebooks.

- ◆ Works on / Compatible with

- Apple iPad

- Apple iPhone and iPod Touch running the 4.0 OS

- Windows Mobile 6.1 and 6.5.

- Playstation 3

- Symbian OS, Google Android OS,

- All other devices that have built in support for HID Bluetooth keyboards.