

## 1 About 220HU USB MODEM

The 220HU USB MODEM is designed to enable PC user access to Internet via GPRS/EDGE/WCDMA/UMTS/HSPA network. This mode uses a standard USB interface for a fast simple connection to your PC.

As to 220HU USB MODEM, which is designed based on HSPA technology with multi-chipsets, support 3G technology, as well as 2G technology.

Functions:

- Access to Internet by wireless connection with high speed
- Send and receive messages
- Contact Manager
- Volume statistics
- Hardware support voice calling,
- Auto search-register wireless network,
- Zero CD, plug and play on Windows,
- Micro SD, T-Flash supported,

Technology Parameter

- Multi-chipsets scheme,
- HSPA/HSDPA/UMTS 850/1900,
- EDGE/GRPS/GSM 850/1900MHz,
- HSPA:7.2Mbps Downlink rate, 2Mbps Uplink rate, Update to 5.76Mbps,
- UMTS/WCDMA: 384Kbps Downlink and Uplink rate,
- EDGE: 384Kbps Downlink rate,177Kbps Uplink rate,
- GPRS/GSM:115.2Kbps downlink rate, 57.6Kbps uplink rate,
- Windows 2000/xp(Basic home, Professional)/vista(Basic home, Business), Mac OS X
- HSPA/HSDPA/UMTS/WCDMA/EDGE/GPRS/GSM network compatible,
- English version
- GSM SIM, 3G, 3.5G USIM
- -10℃~+50℃ working temperature
- Dimension/Weight 83\*29\*12mm/35g

PC Configures(*Suggested*)

- Win2000 sp4, XP sp2,sp3, Vista, Mac
- At least 800×600 pixs,
- At least 1GHz processor, 256M memory, 100M Hard disk.
- At least one free USB port

Insert (U)SIM or T-Flash

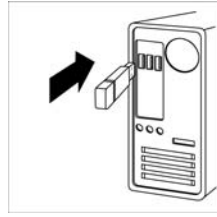
- Before connect modem to PC, please insert (U)SIM like the picture,
- If you want to use T-Flash, please plug out the modem then insert T-Flash like the picture,

## 2 Installations

### 2.1 Getting Started

Remove the USB cover and insert (U) SIM into the slot according to direction shown in figure. Ensure that U (SIM) has been inserted completely.

### 2.2 Connect 220HU USB MODEM to PC



- Insert the USB MODEM into a USB port on the computer according to direction shown in figure as below, or connect to the PC with a USB cable;
- Ensure that has been inserted completely. If indicator light twinkled in red.
- Installation program should run automatically after the MODEM insertion into the computer correctly; in case of failure in the automatic run, please open MODEM folder via Icon of My Computer in Windows OS, and double click it to begin installing.
- Program should run automatically if installation is completed.
- If both automatic running and MODEM folder unavailable, it may be blocked by the antivirus software on the computer, such as Kaspersky. Please exit the modem software, and close or exit the antivirus software temporarily, then insert and install again. Please notice.

### 2.3 Install on Windows XP

Before installation please confirm the system configuration. The required is Pentium 1GHz or advanced CPU, 512MB or advanced memory and 100MB disk at least.



- Choose the right item in the option list of languages, and click "OK" to install the driver firstly.
- Select the directory path to install the driver. It may need seconds to install the

driver, please wait a moment here.

(3). After driver installed, please click "Finish" to run the software.

(4). If saying "no device" or "fail to connect" in the software, it may be the result of failed driver installation. Please reinsert the modem, if asking for driver please let it search automatically.

**Remarks:** On Windows 98/2000, it is the same way to install software, but you need to reboot the computer after software installation.

#### 2.4 Install on Windows Vista

(1). Because of the safety function of Vista, the UAC will remind you the EXE files when install software. If that please select "Allow" like the following picture.



(2). Besides the up different steps, others are the same with steps on Windows XP.

### 3 Operation of Software

#### 3.1 Entrance to main interface

(1). Application runs automatically and main interface pops up when plug the device in for 2nd time. Also, you can find and run the application in the <start> menu.

(2). If you enabled the PIN code, please input the right PIN code in input field, and click <OK>. You have only 3 attempts to input the PIN code, otherwise SIM/USIM card will be locked after 3 times' failure. An input PUK code window will appear which tells you should input the right PUK code, and then click <OK>, the default new PIN code is 0000. If you fail to input the right PUK code after 10 times, please contact your operator.

#### 3.2 Main interface instruction

##### Function icon



Connect to Internet



Open SMS contacts management interface




Open contacts management interface




Set parameters of device and software

##### State information


: Indicate signal strength of current network

Network type: Display GSM/UMTS when network is available but disconnected to Internet, Display GPRS/UMTS/HSPDA when connected to Internet

Operator: Display the corresponding operator's name according to SIM/USIM card



: Indicate unread SMS in main interface

### **Tray Icon**

Click  icon, the application becomes a tray icon in system tray. Main interface can be reopened by double click it.

### **3.3 Establish connection**


#### **Connect**

1. Clicking  on main interface to connect Internet, of which operation change to .


2. Internet connection is established successfully if connection information window ejects.

Please check APN setting if connection failed. (Refer to the section of custom connection in Help.)

#### **Disconnect**

Click  on main interface to disconnect Internet.

### **3.4 SMS service**

Click  icon in the main interface to open SMS/contacts management interface, and choose <messages> to enter SMS service interface.

#### **Update**

1. Click <send/receive>button in shortcut menu bar;
2. Messages saved in SIM card will be read and displayed in the right column. The application will update the new received message, which a window at the right corner of the PC will pop up when you have a new message.

#### **View**

1. Enter inbox interface and update SMS;
2. Left-click, the detail of chosen message will show below. You can also view the

detail by double-click the message.

### **New SMS**

1. Click <New SMS> button in the shortcut menu bar, a SMS writing window is popped up;
1. Input content in edit interface and edit content by edit menu.

### **Send**

1. There are 3 ways to input recipients' number:
  - ✧ Input recipients' number directly and if there are two or more recipients please use “;” to separate each recipients;
  - ✧ Input recipients' name, and press <Enter> to show both name and number;
  - ✧ Click the <To> button to enter recipients selecting window; choose one recipients, or more by pressing ctrl/shift key, and then click the <Add> button to add the chosen recipients to the recipients' list on the right side.
2. Click <Send> to send message. If the message fails to send it will be saved in Outbox.

### **Reply**

1. Select a certain message in <Inbox> interface, and click <Reply> button in the shortcut menu bar;
2. Recipients' number appears in <To> column, and it can be modified;
3. Input content to reply in edit interface, and then click <Send>.

### **Forward**

1. Select a message and choose <Forward> button in shortcut menu bar;
2. The content of chosen message appears in edit interface, and it can be modified;
3. Input recipients' number and then click <Send>.

### **Edit**

1. Enter <Drafts> to select a certain message by double-click;
2. Choose <Save> or <Send> this message when finish editing.


### **Delete**

1. Select one or more items by pressing ctrl/shift key;
2. Choose <Delete> in shortcut menu bar. SMS will be deleted into <Deleted items>. Choose <Remove from device> in <Edit> menu if want to delete the message that saved in the device.

### **Restore**

Enter <Deleted items> to select a certain message, then choose <Restore> by right-click the message.

### 3.5 Contacts

Click  in the main interface to go to SMS/contacts management interface, and choose <Contacts> to enter contacts interface;

Contacts list column contains: <USB modem memory> / <SIM card> / external contacts defaulted by system / <Deleted items>.

#### Update

1. Enter <Contacts> interface, a dialog box pops up to ask “Current contacts need to be updated. Would you like to update the contacts from the device?”;
2. Choose <Update now>, contacts are downloaded from the device memory and SIM/USIM card. If choose <Update later> or scratch out <Always ask>, please click <Update> button to update manually;

#### New contact

Click <New contact> in the shortcut menu bar to open contacts editor;  
Input the related information, and then click <OK>, new contact appears in current contacts list.

#### Modification

1. Select a certain contact and open contact editor by double-click;
2. Modify related contact information, and then click <OK> to save the modification.

#### Delete

1. Select one or more contacts by pressing ctrl/shift key and click <delete> button in shortcut menu bar. Contacts are deleted to <Deleted items>;
2. Enter <Deleted items>, delete the chosen contacts and confirm, contacts are deleted from PC.

#### Send SMS

1. Select one or more contacts by pressing ctrl/shift key, and then click <Send SMS> button in shortcut menu bar;
2. When the message is ready, send it by click <Send>.

#### Send the number in a SMS

Select a contacts and click <Send the number in a SMS> in <Actions> menu;

Input recipient's number, and then click <Send>.

**Internationalization of numbers**

1. Select one or more contacts by pressing ctrl/shift key, and click <Internationalize numbers> in <Actions> menu;
2. Select the country of contacts and then click <Internationalize>, the country code will be added automatically.

**Remove duplicates**

1. Click <Remove duplicates> in <Actions> menu. Contacts that are same in name /first name/mobile/email will be detected automatically;
2. You can choose <Delete> to delete duplicates or click <Next step> and choose <Proceed>.

**Restore**

1. Select one or more contacts by pressing ctrl/shift key in <Deleted items> interface;
2. Drag the selected contact back to the previous contact memory by pressing left key.

**Import from modem and SIM/USIM card to PC**

1. Select one or more contacts by pressing ctrl/shift key in <USB modem memory> / <SIM card> contacts;
2. Drag to certain folder in PC by pressing left key, and save as a vCard file.

**Import from PC to modem and SIM/USIM card**

1. Open a folder in PC to select one or more vCard files;
2. Drag it/them to <USB modem memory> or <SIM card> by pressing left key.


**Import between modem and SIM/USIM card**

1. Enter <USB modem memory> or <SIM card> interface to select one or more contacts;
2. Drag it/them to target contact memory by pressing left key.


External contacts synchronization

External contacts includes <Outlook contacts> / <Windows address book> / <Notes contacts>. Any change to contacts in this interface will be synchronized with system defaulted contacts.

**3.5 Settings**

Click , the popup menu contains settings, help document, version information

and so on.

Choose <Settings> in  menu:

### **Network settings**

1. Network mode, you can choose how to search the network, the default is Auto mode.
2. Network selection, you can select which network to connect the internet. Please refer to the local operators about the current network.

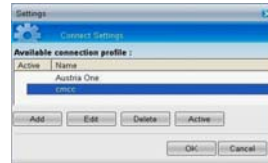
### **Connection setting**

Click <Connection Profile> from the function list on the left column to enter connection setting interface;

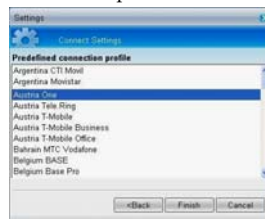
1. If there are many connection profiles in the box, please select the right one and click < Set Default/ Active> to confirm it by default connection.

2. Create a new connection profile:

- ✧ Click <New/Add> to pop up <New connection profile> window;
- ✧ Click<Choose from predefined list>to select one or more profiles in the predefined profile list according to different countries and operators;
- ✧ If choose <New connection>, please input parameters as APN in parameters window;
- ✧ Click <Finish> to add a new connection profile to the list.



3. Edit: edit parameters of predefined connection profile or modify parameters setting.



4. Delete:

Select one or more profiles,



which are not operator default, connect profiles, and then click <Delete>.

### **SMS settings**

Choose <Messages> in the submenu of <PC Suite Explorer> and enter SMS setting interface

1. SMS class setting: Set class of SMS: display on screen/saved in modem memory/in SIM card/default card/no class.
2. SMS validity period: You can choose validity period of SMS from maximum 1week/1day/6hours.
3. SMS service centre setting: It can be acquired from SMS/USIM card, or you can edit it in input field.
4. Live update setting Choose whether automatically check for new updates or not, and set update periods, the defaulted periods is every 2 hours.

### **PIN code settings**

1. Enable/disable PIN code
  - ✧ Click <>—<Enable/Disable PIN code> to enter setting interface;
  - ✧ Click <Enable>/<Disable> to activate input field, input right PIN code, and then click <Apply>.
- 2.1 Change PIN code
  - ✧ Click <Change PIN code> to enter change interface after PIN code enabled;
  - ✧ Input previous PIN code and input new PIN code;
  - ✧ Re-input new PIN code to confirm, and click <Apply>.

### **Other settings**

1. Restart in diagnostic mode: choose to enter diagnostic mode, you can choose whether send problems to the technical supporter.
2. Help: choose <Help> to open detailed help document about this application.
3. About: choose <About> to view the information of software version.

## **4 Indicator light**

State of indicator light	Description		
	HSPA	EDGE	CDMA
Twist in red slowly	USB Connected, And powered		
Twist in red and green	Network searching		
Lighted in red	Abnormity of (U)SIM card		

Twist quickly	Internet is connected		
Luminous continuously	Data transmitting		
Green	HSDPA/HSUPA	-	-
Green	UMTS/WCDMA	-	-
Red and Green	EDGE/GPRS/GSM	EDGE/GPRS/GSM	-

## 5 Attention

1. If the SMS message is not sent or fails, please confirm the related setting is correct. And you can check that in setting manual or contact you operator centre.
2. If you unable to receive SMS, please check whether your (U)SIM card is fully.
3. To avoid any damage by over heat, please keep the working environment in ventilation to radiate the heat when running the data card.
4. If the main window displays "No device", please unplug the device and reinsert it.
5. If the SIM card is unplugged during application, please unplug the device first, and then restart the device.
6. If service available, but connection unavailable, please set the connection profile.
7. Please use two plugs on USB cable to ensure that has enough power supply
8. The indicator light indicates status of power, and the one downside flickered to indicate status of network searching. After network is searched, the green light indicates 3G networks, and the red light indicates GPRS.
9. Please click <Send/Receive> frequently to update the new messages that will display in the messages list.
10. For Mac OS or more detailed information, please click "Help" in Setting Menu.
11. For Linux, please contact with the manufacturer.

## **FCC WARNING**

This device complies with Part 15 of the FCC Rules. Operation is subject to the following two conditions:

- (1) this device may not cause harmful interference, and
- (2) this device must accept any interference received, including interference that may cause undesired operation.

This device must be installed to provide a separation distance of at least 24 cm from all persons and must not be collocated or operating in conjunction with any other antenna or transmitter.

NOTE 1: This equipment has been tested and found to comply with the limits for a Class B digital device, pursuant to part 15 of the FCC Rules. These limits are designed to provide reasonable protection against harmful interference in a residential installation. This equipment generates, uses and can radiate radio frequency energy and, if not installed and used in accordance with the instructions, may cause harmful interference to radio communications. However, there is no guarantee that interference will not occur in a particular installation. If this equipment does cause harmful interference to radio or television reception, which

can be determined by turning the equipment off and on, the user is encouraged to try to correct the interference by one or more of the following measures:

- Reorient or relocate the receiving antenna.
- Increase the separation between the equipment and receiver.
- Connect the equipment into an outlet on a circuit different from that to which the receiver is connected.
- Consult the dealer or an experienced radio/TV technician for help.

NOTE 2: Any changes or modifications not expressly approved by the manufacturer could void the user's authority to operate the equipment.

NOTE 3: The manufacturer is not responsible for any radio or TV interference caused by unauthorized modifications to this equipment. Such modifications could void the user's authority to operate the equipment.