

Figure 1 : Front View of Antenna Assembly

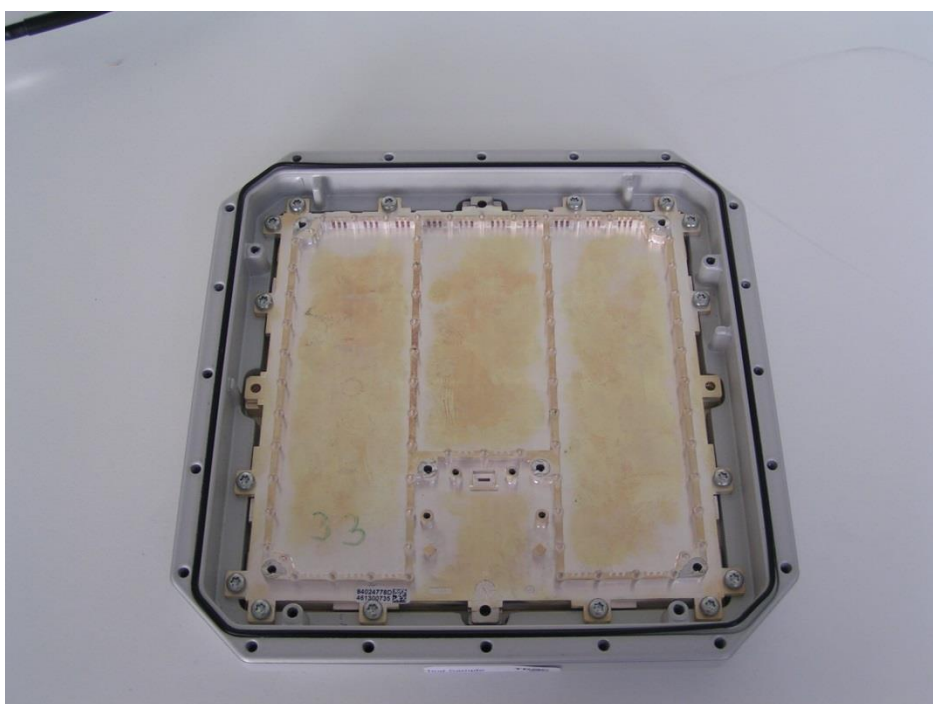


Figure 2: Internal View of Antenna Assembly

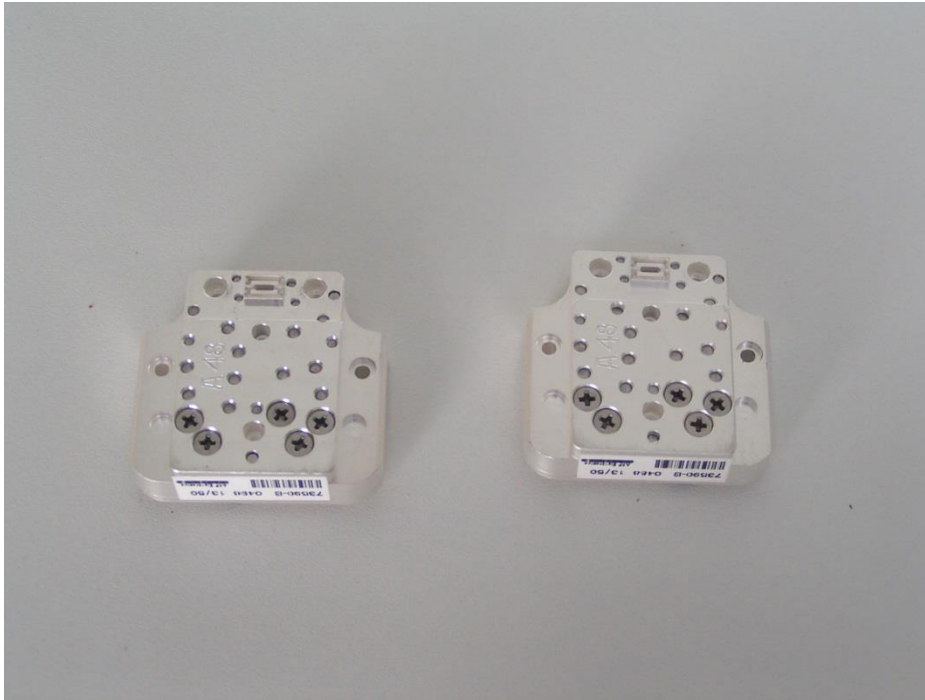


Figure 3: A/B Band Diplexers (Antenna Face)



Figure 4: A/B Band Diplexers (Radio Side)

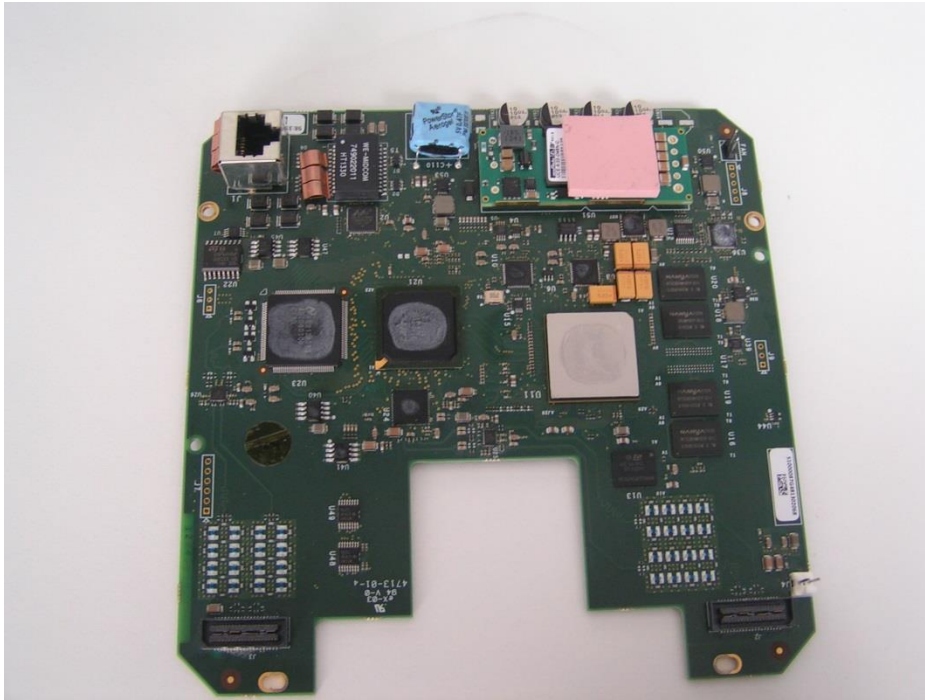


Figure 5: Component Side of Common Modem Board

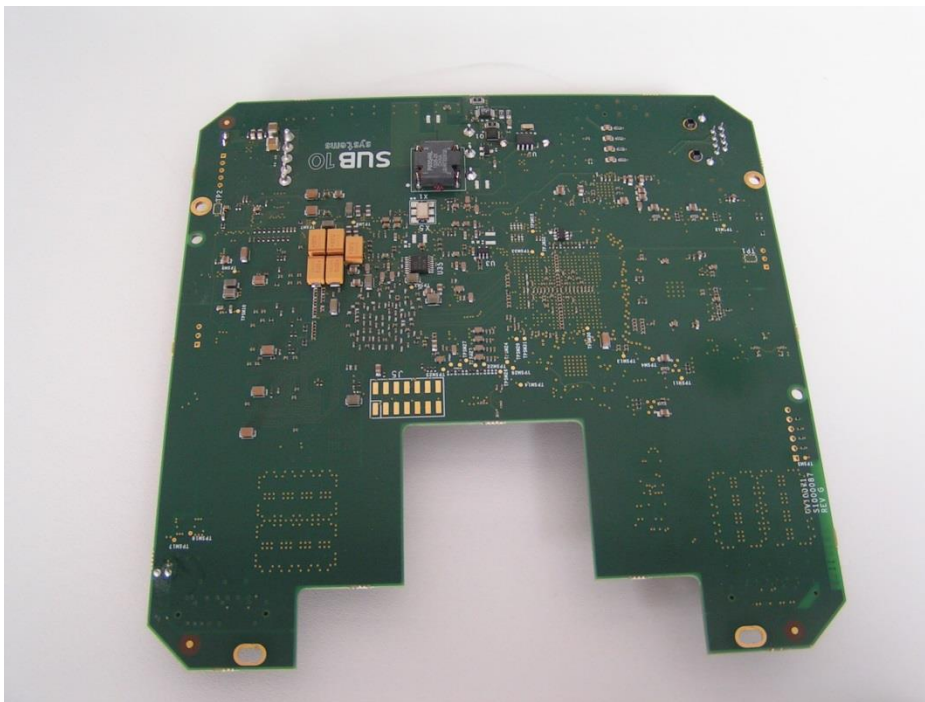


Figure 6 : Reverse Side of Common Modem Board

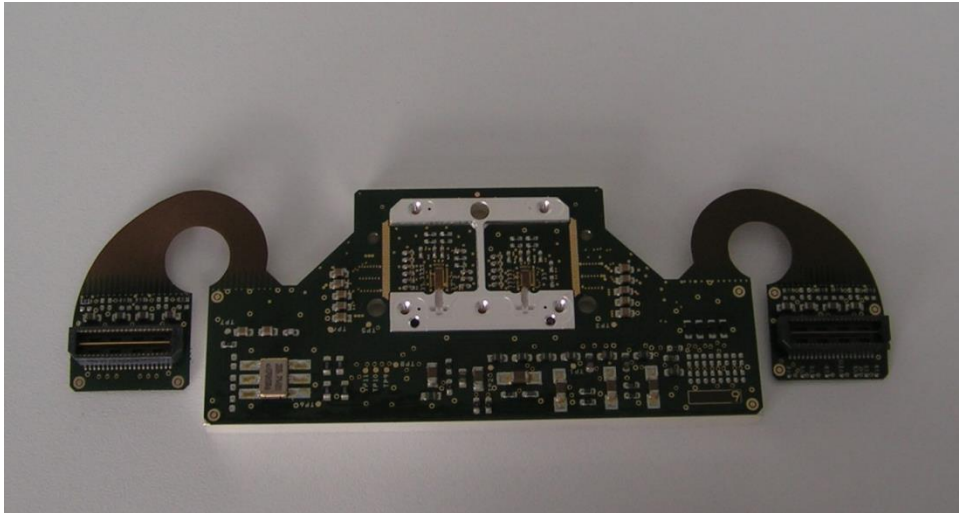


Figure 7: A Band Microwave Board

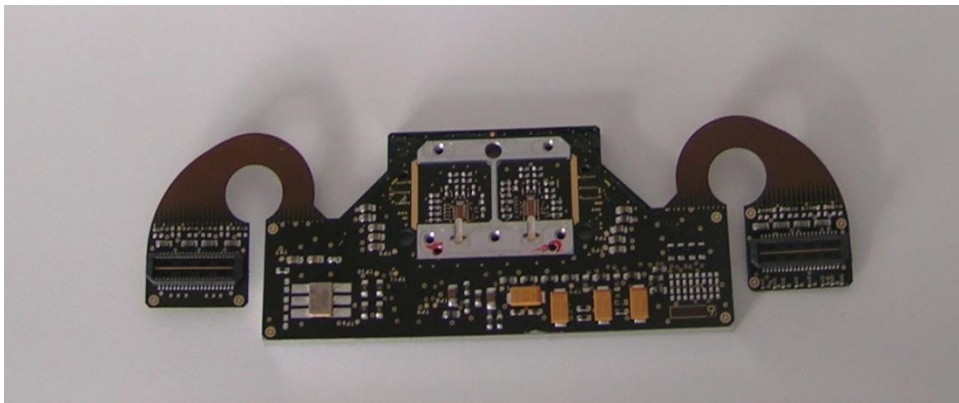


Figure 8 B Band Microwave Board



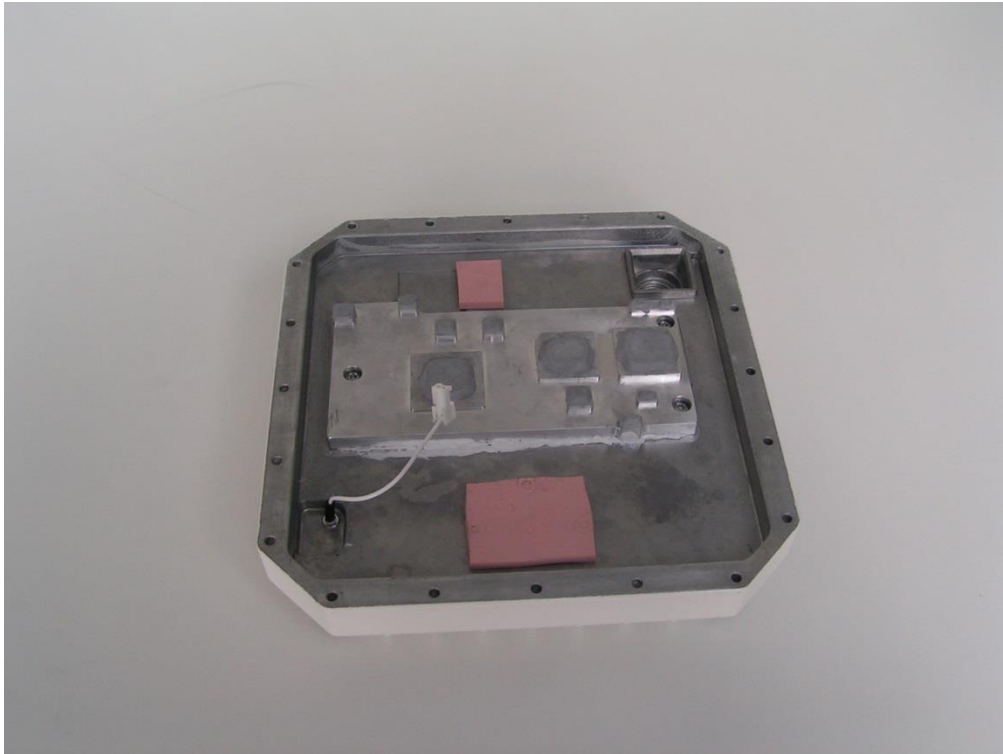


Figure 9: Inside View of Heatsink/Chassis



Figure 10: Modem and Microwave Assembly into Heatsink