

RP00-CU
Stairlift user's manual
part of
Call module

TABLE OF CONTENTS

1	Introduction	4
1.1	Making a call	4
1.2	Disconnecting.....	5
1.3	Choosing the next number	5
1.4	Accepting incoming calls	6
1.5	Error codes	6

FCC and IC Declarations

Compliance statement Canada & FCC (part 15.19)

This device contains licence-exempt transmitter(s)/receiver(s) that comply with Innovation, Science and Economic Development Canada's licence-exempt RSS(s) and complies with part 15 of the FCC Rules. Operation is subject to the following two conditions:

1. This device may not cause harmful interference.
2. This device must accept any interference received, including interference that may cause undesired operation of the device.

Le présent appareil est conforme aux CNR d'Industrie Canada applicables aux appareils radio exempts de licence. L'exploitation est autorisée aux deux conditions suivantes : (1) l'appareil ne doit pas produire de brouillage, et (2) l'utilisateur de l'appareil doit accepter tout brouillage radioélectrique subi, même si le brouillage est susceptible d'en compromettre le fonctionnement.

Warning (part 15.21)

Changes or modifications not expressly approved by the party responsible for compliance could void the user's authority to operate the equipment.

Information to the User (Part 15.105 (b))

Note: This equipment has been tested and found to comply with the limits for a Class B digital device, pursuant to part 15 of the FCC Rules. These limits are designed to provide reasonable protection against harmful interference in a residential installation. This equipment generates, uses and can radiate radio frequency energy and, if not installed and used in accordance with the instructions, may cause harmful interference to radio communications. However, there is no guarantee that interference will not occur in a particular installation. If this equipment does cause harmful interference to radio or television reception, which can be determined by turning the equipment off and on, the user is encouraged to try to correct the interference by one or more of the following measures:

- Reorient or relocate the receiving antenna.
- Increase the separation between the equipment and receiver.
- Connect the equipment into an outlet on a circuit different from that to which the receiver is connected.
- Consult the dealer or an experienced radio/TV technician for help.

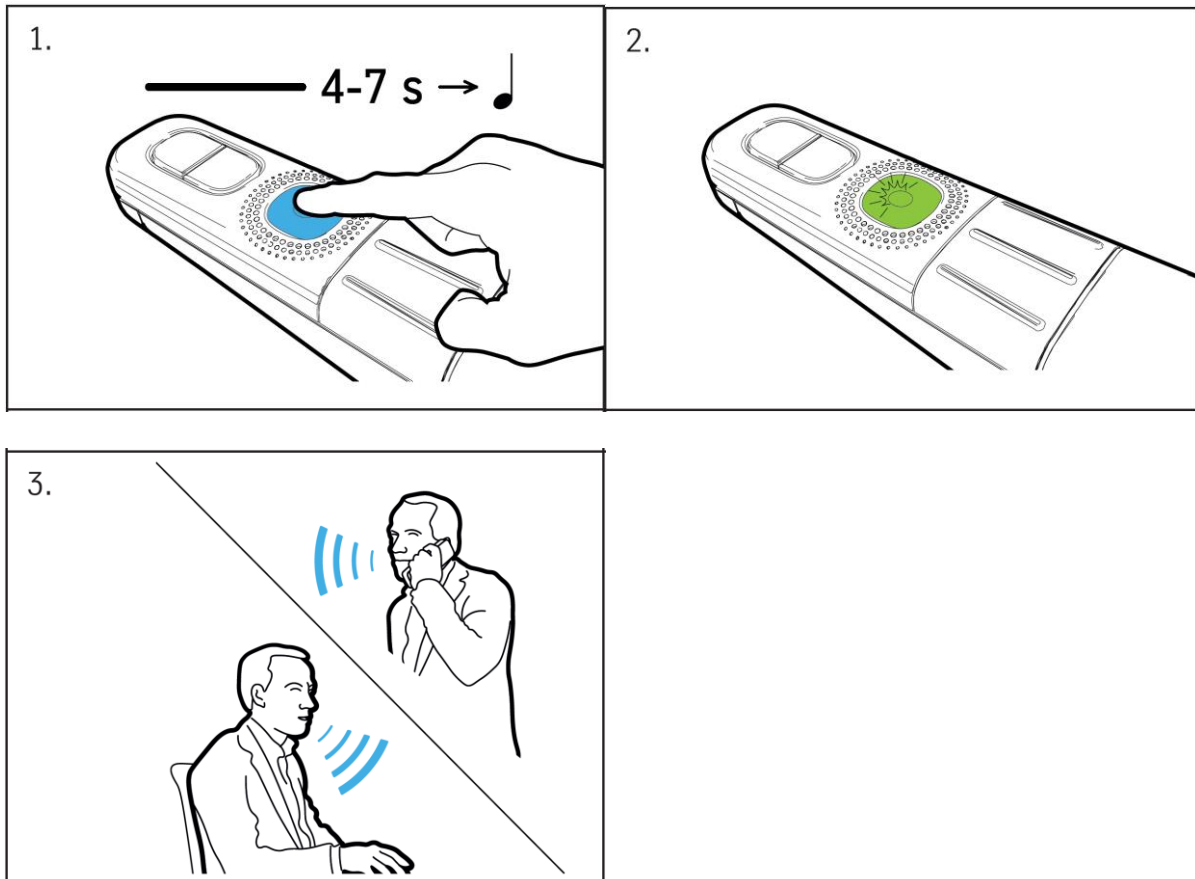
Complies with: CAN ICES-3 (B)/NMB-3(B)

1 Introduction

This manual has been derived from the host manual the RP00-CU stairlift. This document describes the use of the Call module as mounted in a RP00-CU stairlift¹. The Call module (CM) is an optional function of a stairlift. This option makes it possible to communicate via a landline with up to three pre-programmed telephone numbers, for example in case of an emergency. Incoming calls can also be accepted.

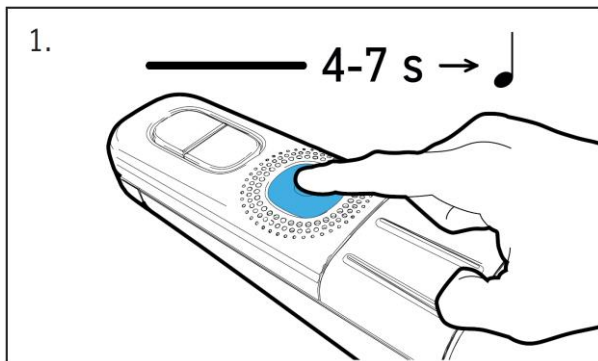
1.1 Making a call

1. Press the yellow alarm button for 4 to 7 seconds. The dialling tone can now be heard.
2. Release the alarm button. The light on the alarm button has now turned green.
3. If the contact answers, you can communicate by speaking in the direction of the alarm button.



¹ Note the Call module is identified with Manufacturing part number M/N 1060661 and a complete stairlift with RP00-CU.

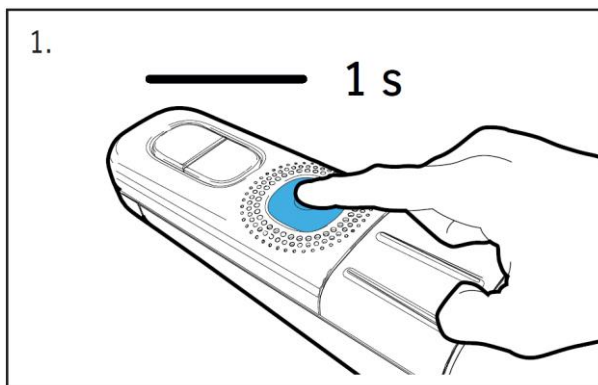
1.2 Disconnecting



1. Press the yellow alarm button for 4 to 7 seconds. The light on the alarm button turns off.

The call has now ended. It is also possible for the person being called to hang up.

1.3 Choosing the next number



If the connection to the first contact does not succeed, you can choose to go to the next pre-programmed number. This is done as follows:

1. During the call, press the yellow alarm button once briefly. The next number will now be dialed.

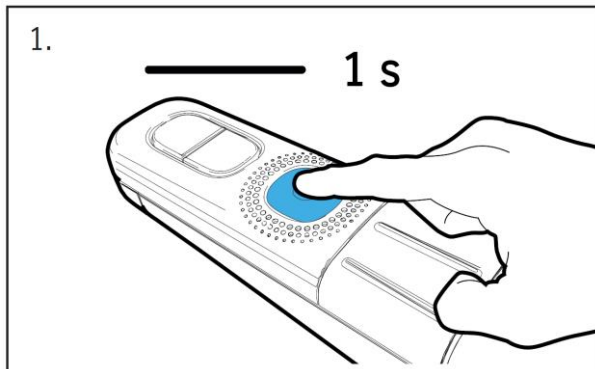


NOTE

If the contact's number redirects to voice mail, you must also briefly press the yellow alarm button once to call the next number.

1.4 Accepting incoming calls

The landline is connected to the Call module. An incoming call can therefore also be accepted while using the stairlift.



When there is an incoming call, the Communication Module produces a ring tone. Accepting the call is done as follows:

1. Briefly press the yellow alarm button once. The connection is now established. Speak in the direction of the alarm button to communicate. The call can be ended by pressing the yellow alarm button for 1 second.

1.5 Error codes

LED colour	Sound	Cause
Flashing red	None	Not connected to a base station or no base station selected
Flashing red	Two short beep sounds, not repeating.	CM power supply is lost or backup battery is charging
Flashing green	Two beep sounds, repeating every 2 minutes	The CM tries to reconnect to the registered base station
When calling, flashing red	Two beep sounds, 1 second pause, two beep sounds, not repeating	No telephone numbers programmed
Green (after trying to call)	None	No telephone line present

For other questions, please contact your supplier.