

S1000W英文说明书V1.0版
尺寸: 127x127mm
材质: 80g书纸
工艺: 单面正反面印刷
装订方式及页面数: 对折, 打钉

Manual Edition 1.0, June 2021
IB-200-XXXXXXX



@Edifierglobal



@Edifier_Global



@Edifier_Global



edifier.com/support

Hereby, Edifier International Limited declares that the radio equipment type EDF100027 is in compliance with Directive 2014/53/EU. The full text of the EU declaration of conformity is available at the following internet address: <https://www.edifier.com/vn/en/you-doc.html>

Model: EDF100027
FCC ID: 25G-EDF100
IC: 10004A-EDF130

Edifier International Limited
P.O. Box 6364
General Post Office
Hong Kong

Tel: +852 2522 6989
Fax: +852 2522 1989
www.edifier.com

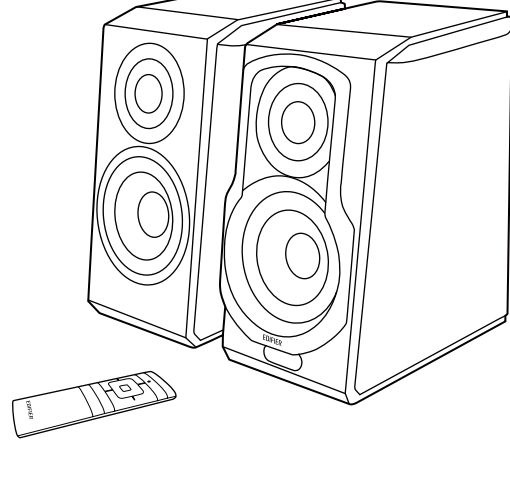
© 2021 Edifier International Limited. All rights reserved.
Printed in China

NOTICE:

For the need of technical improvement and system upgrade, information contained herein may be subject to change from time to time without prior notice.
Products of EDIFIER will be customized for different applications. Pictures and illustrations shown on this manual may be slightly different from actual product. If any difference is found, the actual product prevails.

According to Article 10(1) of Directive 2014/53/EU, the packaging shows that this radio equipment will be subject to some restrictions when placed on the market in Belgium (BE), Bulgaria (BG), Czech Republic (CZ), Denmark (DK), Germany (DE), Estonia (EE), Ireland (IE), Greece (EL), Spain (ES), France (FR), Croatia (HR), Italy (IT), Cyprus (CY), Latvia (LV), Lithuania (LT), Luxembourg (LU), Hungary (HU), Malta (MT), Netherlands (NL), Austria (AT), Poland (PL), Portugal (PT), Romania (RO), Slovenia (SI), Slovakia (SK), Finland (FI), Sweden (SE), Norway (NO), Iceland (IS), Liechtenstein (LI), Switzerland (CH) and Turkey (TR).

EDIFIER®



S1000W

Wi-Fi Bookshelf Speaker

User manual

Important safety instruction

1. Please read the instructions carefully. Keep it in safe place for future reference.
2. Use only accessories approved by the manufacturer.
3. Install the instrument properly by following the instructions in the device connection section.
4. Using the product in a 0-35 °C environment is recommended.
5. To reduce the risk of fire and electric shock, do not expose the product to rain or moisture.
6. Do not use this product near water. Do not immerse the product into any liquid or have it exposed to dripping or splashing.
7. Do not install or use this product near any heat source (e.g. radiator, heater, stove, or other devices that generate heat).
8. Do not place any object filled with liquids, such as vases on the product, neither should any open fire, such as lighted candles be placed on the product.
9. Do not block any ventilation openings. Do not insert any object into ventilation openings or slots. It may cause fire or electric shock.
10. Keep sufficient clearance around the product to maintain good ventilation (minimum 5cm is recommended).
11. Do not force a plug into the jack. Before connection, check for blockage in the jack and whether the plug matches the jack and is oriented to the right direction.
12. Keep the provided accessories and parts (such as screws) away from children to prevent from being swallowed by mistake.
13. Do not open or remove the housing yourself. It may expose you to dangerous voltage or other hazardous risks. Regardless the cause of damage (such as damaged wire or plug, exposure to liquid splash or foreign object falling in, exposure to rain or moisture, product not working or being dropped, etc.), the repair has to be performed by an authorized service professional immediately.
14. Before cleaning the product with dry cloth, always turn off the product and disconnect the power plug first.
15. Never use strong acid, alkali, gasoline, alcohol, or other chemical solvents to clean the product surface. Use only neutral solvent or clear water for cleaning.



Excessively loud music may lead to hearing loss. Please keep the volume in a safe range.



Correct disposal of this product. This marking indicates that this product should not be disposed with other household waste throughout the EU. To prevent possible harm to the environment or human health from uncontrolled waste disposal, please be responsible to promote the sustainable reuse of material resources. To return your used device, please use the return and collection systems or contact the retailer where the product was purchased. They can take this product for environmental safe recycling.



Use only with the cart, stand, tripod, bracket, or table specified by the manufacturer, or sold with the apparatus. When a cart is used, use caution when moving the cart/appliance combination to avoid injury from tip-over.

1

English

Important safety instruction

Power warnings:

1. Place the product near the power outlet for easy use.
2. Before use, make sure that the operating voltage is the same as your local power supply. Correct operating voltage can be found on the product plate.
3. For safety purposes, unplug the product during lightning storms or when unused for extended periods of time.
4. Under normal conditions, the power supply may get hot. Please keep good ventilation in the area and exercise caution.
5. Safety warning labels on the housing or bottom of the product or power adaptor.



This symbol is to alert the user to the presence of un-insulated dangerous voltage within the product's enclosure that may be of sufficient magnitude to constitute a risk of electric shock to persons.



This symbol is to warn the user not to disassemble the enclosure of the product and there is no user-replaceable part inside. Take the product to an authorized service center for repair.



This symbol indicates that the product is for indoor use only.



This symbol indicates that the product is a CLASS II or double insulated electrical device with no earth requirement.

The MAINS plug is used as the disconnect device, the disconnect device shall remain readily operable.

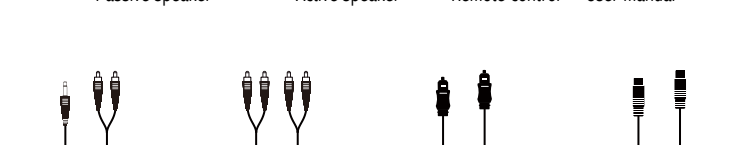
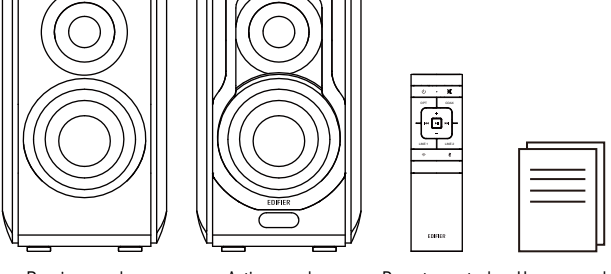
For wireless product:

1. Wireless product may generate shortwave radio frequencies and interfere with the normal use of other electronic devices or medical equipment.
2. Turn off the product when it's disallowed. Do not use the product in medical facilities, on airplane, at gas stations, near automatic gates, automatic fire alarm system or other automated devices.
3. Do not use the product in the vicinity of a pacemaker within a 20cm range. The radio waves may affect the normal operation of the pacemaker or other medical devices.

2

English

Box contents



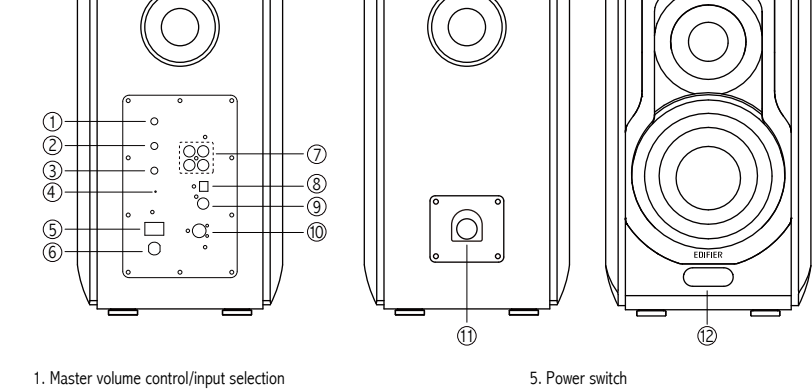
3.5mm-RCA audio cable RCA-RCA audio cable Fiber optic audio cable Speaker connecting cable

Note: Images are for illustrative purposes only and may differ from the actual product.

3

English

Illustration

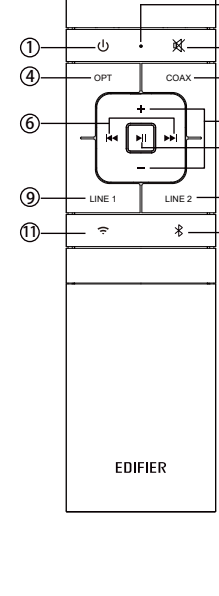


1. Master volume control/input selection
Rotate: master volume control
Press: input mode switch
(Wi-Fi → Bluetooth → Line In 1 → Line In 2 →
Optical → Coaxial)
2. Treble dial
3. Bass dial
4. Reset
Press: disconnect Bluetooth and clear Bluetooth pairing records
(Bluetooth mode);
enter Wi-Fi network connection (Wi-Fi mode)
Press and hold for 3 seconds: restore to factory settings
5. Power switch
6. Power cable
7. Line In input
8. Optical input
9. Coaxial input
10. Connect to passive speaker
11. Connect to active speaker
12. Display window
Wi-Fi mode: white light
Bluetooth: blue light
Line In 1 mode: green light flashes once
Line In 2 mode: green light flashes twice
Optical mode: red light flashes once
Coaxial mode: red light flashes twice

4

English

Remote control

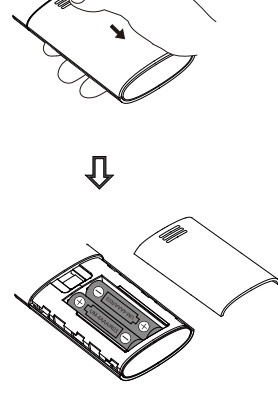


1. Power on/off
2. Mute
3. Remote control indicator
4. Optical mode
5. Coaxial mode
6. Previous track/next track (Bluetooth mode/Wi-Fi mode)
7. Volume up/down
8. Play/Pause (Bluetooth mode/Wi-Fi mode)
Press and hold for 6 seconds: restore to factory settings
9. Line In 1 mode
10. Line In 2 mode
11. Wi-Fi mode
Press and hold: Wi-Fi network connection
12. Bluetooth mode
Press and hold: disconnect Bluetooth

5

English

Remote control



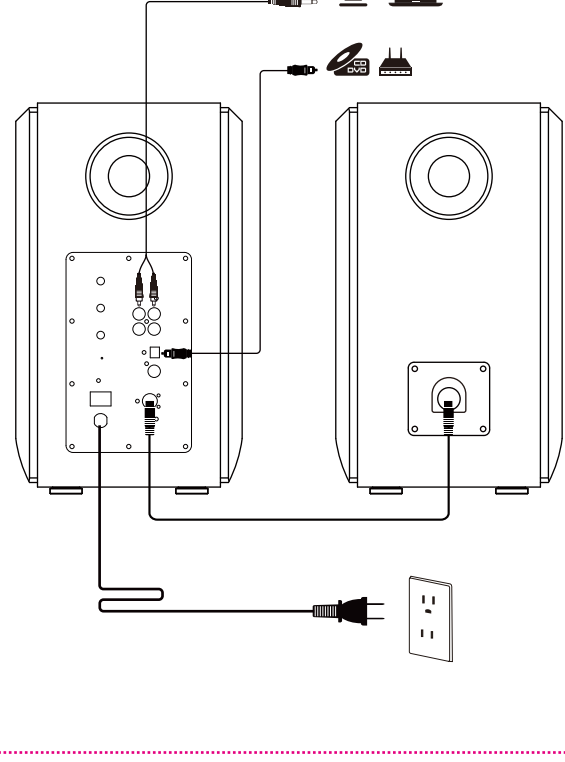
1. As the illustration shows, press remote control batteries cover downward with thumb and follow the arrow direction to remove cover, uses two AAA batteries (note the "+" and "-" pole).
2. The batteries life are normally about 6 months; please replace them when the remote control is not sensitive or the control distance is shortened.
3. Never use old and new batteries together.

Note:
1. Do not place the remote control in places that are hot and humid.
2. Do not charge the batteries.
3. Remove the batteries when unused for a long period of time to avoid batteries leakage.
4. The batteries should not be exposed to excessive heat such as direct sun, fire or similar.
5. Danger of explosion if batteries are incorrectly replaced. Replace only with the same or equivalent type.

6

English

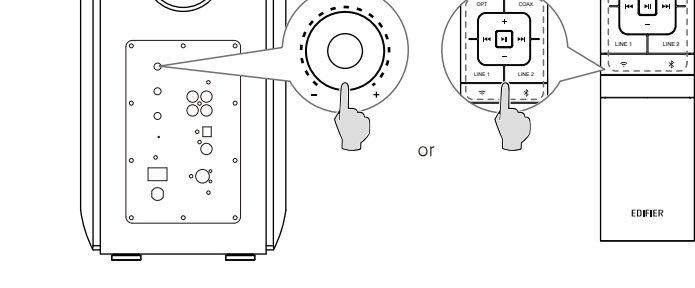
Connection



7

English

Audio inputs



1. **Line In 1/Line In 2 mode**
Press the "volume/input" button on the active speaker, or press the "LINE 1" or "LINE 2" button on the remote control to switch to Line In 1/Line In 2 mode (the green indicator will flash and then will be steady lit);
Connect audio source (mobile phone, tablet, etc.) to the "Line In 1" or "Line In 2" input port (note color matching) on the rear panel of the active speaker using audio cable;
Play music on the connected device and adjust the settings to a desired level.
2. **Optical mode**
Press the "volume/input" button on the active speaker, or press the "OPT" button on the remote control to switch to optical mode (the red indicator will flash once and then will be steady lit);
Connect audio source (DVD, Set Top Box, etc.) to the "OPT" input port on the rear panel of the active speaker using fiber optic audio cable;
Play music on the connected device and adjust the settings to a desired level.

8

English

Audio inputs

3. **Coaxial mode**
Press the "volume/input" button on the active speaker, or press the "COAX" button on the remote control to switch to coaxial mode (the red indicator will flash twice and then will be steady lit);
Connect audio source to the "COAX" input port on the rear panel of the active speaker using coaxial cable (coaxial cable not included);
Play music on the connected device and adjust the settings to a desired level.
4. **Bluetooth mode**
It is Bluetooth mode by default when powered on for the first time; You can also press the "volume/input" button on the active speaker, or press the "BT" button on the remote control to switch to Bluetooth mode (the blue indicator will flash rapidly);
Set your Bluetooth device to search for and connect to "EDIFIER S1000W", after pairing is successful, the blue indicator will be steady lit.
Play music on the connected device and adjust the settings to a desired level.

Note:
To enjoy all Bluetooth functions of this product, please ensure your audio source device has A2DP (Advanced Audio Distribution Profile) and AVRCP (Audio Video Remote Control Profile) profiles.
Bluetooth connectivity and compatibility may differ amongst different source devices, depending on the software versions of source devices.
Only the standard PCM audio signals (44.1kHz/48kHz) function in optical/coaxial mode.

9

English

Download Edifier Home app

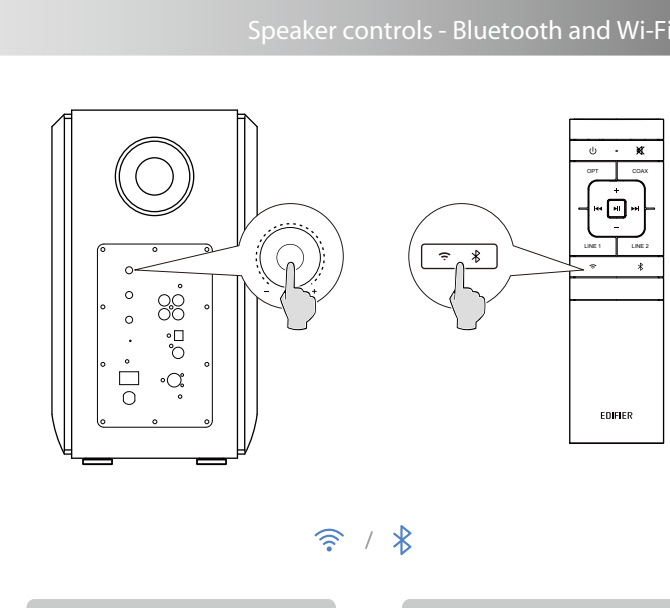
Please download the "Edifier Home" App to a compatible phone or tablet from the App Store/Google Play or from www.edifier.com.



10

English

Speaker controls - Bluetooth and Wi-Fi modes

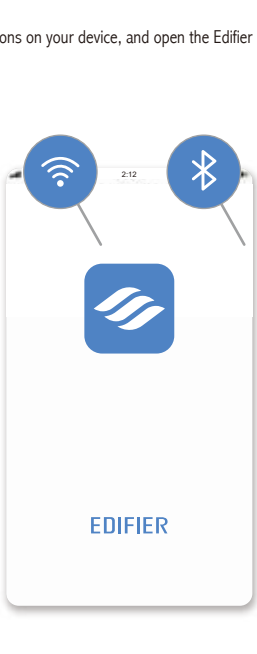


11

English

Connect to Wi-Fi network

Please enable Wi-Fi and Bluetooth functions on your device, and open the Edifier Home App. Then follow the instructions to connect S1000W to your Wi-Fi Network.



12

English

Connect to Wi-Fi network

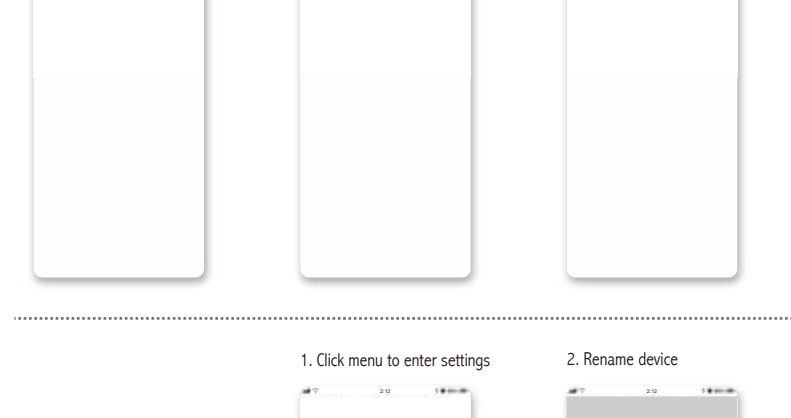
1. Add device
2. Select device model for network connection
3. Check if speaker is under network connection
4. Please select the following device discovered
5. Connecting to speaker...
6. Configuring audio network...

13

English

Connect to Wi-Fi network

7. Network configuration is successful
8. Link your speaker to your Amazon account
9. Add ALEXA



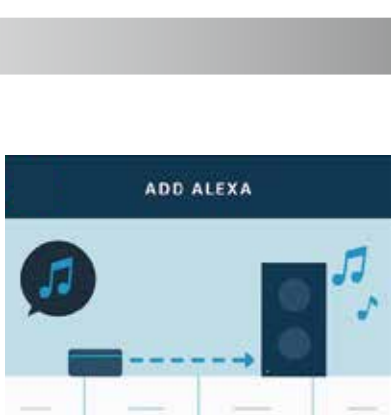
1. Click menu to enter settings
2. Rename device

You can also Rename device:

14

English

Work with Alexa

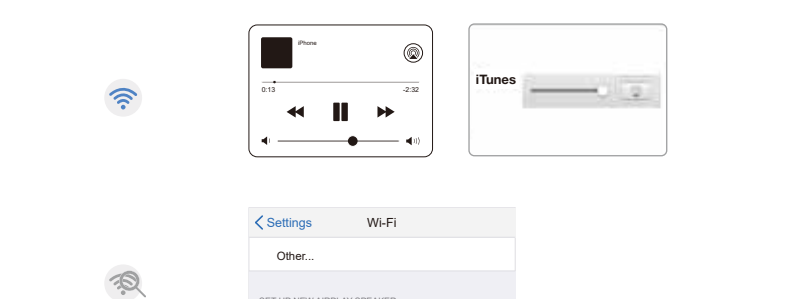


Register your S1000W with your Amazon account through the Edifier Home App. By using an Alexa Built-in device or Amazon Echo device, you are able to use your voice to play and pause music, change tracks, adjust volume, and more.

15

English

AirPlay



Set up the AirPlay
If the S1000W is already connected to the Wi-Fi network, AirPlay is ready to use.
If not, please go to Settings > Wi-Fi on your iOS device and look for EDIFIER_S1000W_XXXX in the Set Up New AirPlay Speaker section.
AirPlay enables audio apps on Apple mobile/laptop or desktop devices to stream material over a network to AirPlay compatible speakers such as S1000W. AirPlay enabled apps will display the AirPlay icon.

Compatibility:
Phone, iPad, and iPod touch with iOS 11.4 or later, Apple TV 4K or Apple TV (4th Generation) with tv OS 11.4 or later, Mac or PC with iTunes 12.8 or later.

16

English

Spotify

Use your phone, tablet or computer as a remote control for Spotify. Go to spotify.com/connect to learn how.

The Spotify Software is subject to third party licenses found here: <https://www.spotify.com/connect/third-party-licenses>

17

English

Specifications

Power output: RL (treble): 25W+25W
RL (Mid-range and bass): 15W+15W
Frequency response: 43Hz-20KHz
Audio inputs: Wi-Fi, Bluetooth, Line In, Optical, Coaxial.

Declaration for EU:
Frequency Band (Bluetooth): 2.402GHz ~ 2.480GHz
Frequency Band (Wi-Fi): 2.400GHz ~ 2.4835GHz, 5.15GHz ~ 5.35GHz, 5.4GHz ~ 5.725GHz
RF Power output: ≤20 dBm (ERP) (5.725GHz ~ 5.850GHz excluded)
RF Power output: ≤14 dBm (ERP) (5.725GHz ~ 5.850GHz)

The WLAN function for this device is restricted to indoor use only when operating in the 5150 to 5350MHz frequency range.

Note:
• Download Edifier Home App from the App Store/Google Play Store.
• Images are for illustrative purposes only and may differ from the actual product.

18

English

Troubleshooting

No sound
• Check if the speaker is ON.
• Try to turn up the volume using the volume control or remote control.
• Ensure the audio cables are firmly connected and the input is set correctly on the speaker.
• Check if there is a signal output from the audio source.

Cannot connect via Bluetooth
• Make sure the speaker is switched to Bluetooth input. If it is in other audio input modes, Bluetooth will not connect.
• Disconnect from any Bluetooth device by pressing and holding the "BT" button, then try again.
• Effective Bluetooth transmission range is 10 meters; please ensure that operation is within that range.
• Try another Bluetooth device for connection.

The S1000W does not turn on
• Check if main power is connected, or if the wall outlet is switched on.

Noise coming from speakers
• EDIFIER speakers generate little noise, while the background noise of some audio devices are too high. Please unplug audio cables and turn the volume up, if no sound can be heard at 1 meter away from the speaker, then there is no problem with this product.

To learn more about EDIFIER, please visit www.edifier.com
For EDIFIER warranty queries, please visit the relevant country page on www.edifier.com and review the section titled Warranty Terms.
USA and Canada: service@edifier.ca
South America: Please visit www.edifier.com (English) or www.edifier.es (Spanish/Portuguese) for local contact information.

19

English