

## Circuit Description

### Keyboard Circuit:

- The U5 circuit for adjusting voltage is used for supplying enough voltage to MCU, keyboard circuit, and RF circuit.
- The function of MCU SE27A is used for gathering signal produced by key operation and transmitting the signal to RF circuit formed by U3 and other electronic components to modulate, amplify and send out.
- The RF signal of 2403-2479MHz is generated by a oscillator of 12MHz circuit, and the modulated 2403-2479MHz wireless signal is transmitting via antenna.

### Antenna Specification:

Type of Antenna: PCB Antenna

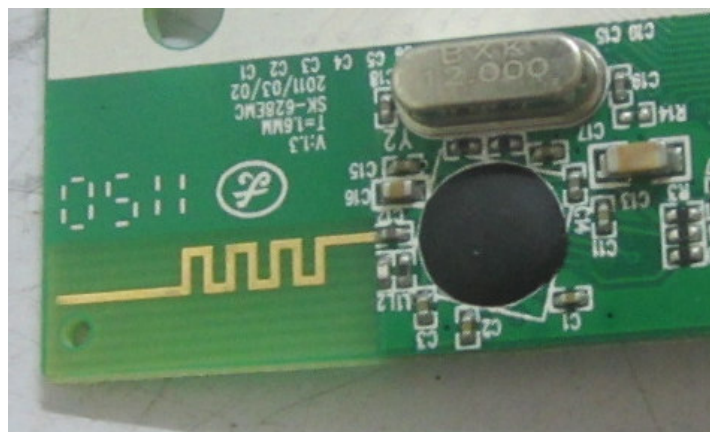
Frequency Range: 2400-2483.5MHz

Maximum Gain: 0 dBi

Impedance: 50 ohm

Size: 17mm x 2.5mm

### Antenna View



### Antenna Location

