

ABBA INNOVATION S.A.S

MOBILE PHONE

Main Model: 5300

Serial Model: 5130, A1, A2, A3, A5, A7, A6, A8

March 15, 2013




Report No.: 13070052-FCC-E1

(This report supersedes NONE)



Modifications made to the product : None

This Test Report is Issued Under the Authority of:

		
Alan Lv Compliance Engineer	Alex Liu Technical Manager	

This test report may be reproduced in full only.
Test result presented in this test report is applicable to the representative sample only.

EMC Test Report

To: FCC Part 15 Subpart B Class B: 2012, ANSI C63.4: 2009

SIEMIC, INC.
Accessing global markets



Laboratory Introduction

SIEMIC, headquartered in the heart of Silicon Valley, with superior facilities in US and Asia, is one of the leading independent testing and certification facilities providing customers with one-stop shop services for Compliance Testing and Global Certifications.



In addition to [testing](#) and [certification](#), SIEMIC provides initial design reviews and [compliance management](#) through out a project. Our extensive experience with [China](#), [Asia Pacific](#), [North America](#), [European](#), and [international](#) compliance requirements, assures the fastest, most cost effective way to attain regulatory compliance for the [global markets](#).

Accreditations for Conformity Assessment

Country/Region	Accreditation Body	Scope
USA	FCC, A2LA	EMC , RF/Wireless , Telecom
Canada	IC, A2LA, NIST	EMC, RF/Wireless , Telecom
Taiwan	BSMI , NCC , NIST	EMC, RF, Telecom , Safety
Hong Kong	OFTA , NIST	RF/Wireless ,Telecom
Australia	NATA, NIST	EMC, RF, Telecom , Safety
Korea	KCC/RRA, NIST	EMI, EMS, RF , Telecom, Safety
Japan	VCCI, JATE, TELEC, RFT	EMI, RF/Wireless, Telecom
Mexico	NOM, COFETEL, Caniety	Safety, EMC , RF/Wireless, Telecom
Europe	A2LA, NIST	EMC, RF, Telecom , Safety

Accreditations for Product Certifications

Country/Region	Accreditation Body	Scope
USA	FCC TCB, NIST	EMC , RF , Telecom
Canada	IC FCB , NIST	EMC , RF , Telecom
Singapore	iDA, NIST	EMC , RF , Telecom
EU	NB	EMC & R&TTE Directive
Japan	MIC, (RCB 208)	RF , Telecom
Hong Kong	OFTA (US002)	RF , Telecom

This page has been left blank intentionally.

CONTENTS

1	EXECUTIVE SUMMARY & EUT INFORMATION	5
2	TECHNICAL DETAILS	6
3	MODIFICATION.....	7
4	TEST SUMMARY.....	8
5	MEASUREMENTS, EXAMINATION AND DERIVED RESULTS	9
	ANNEX A. TEST INSTRUMENT & METHOD	15
	ANNEX B. EUT AND TEST SETUP PHOTOGRAPHS	20
	ANNEX C. TEST SETUP AND SUPPORTING EQUIPMENT.....	32
	ANNEX D. USER MANUAL / BLOCK DIAGRAM / SCHEMATICS / PART LIST	36
	ANNEX E. DECLARATION OF SIMILARITY	37

1 EXECUTIVE SUMMARY & EUT INFORMATION

The purpose of this test programme was to demonstrate compliance of the ABBA INNOVATION S.A.S, MOBILE PHONE and model: 5300 against the current Stipulated Standards. The MOBILE PHONE has demonstrated compliance with the FCC Part 15 Subpart B Class B: 2012, ANSI C63.4: 2009.

EUT Information

EUT
Description : MOBILE PHONE
Main Model : 5300
Serial Model : 5130, A1, A2, A3, A5, A7, A6, A8
Antenna Gain : GSM850: 0.5dBi
 PCS1900: 1dBi
 Bluetooth: 0dBi
Adapter:
Model: 5300
Input Power : **Input:** AC110-240V 50/60Hz 200mA
 Output: DC5.0V-500mA
 Li-ion Battery:
 Model:BL-5C
 Voltage: 3.7V, 800mAh

Classification
Per Stipulated : **Class B Emission Product Per**
Test Standard : **FCC Part 15 Subpart B Class B: 2012, ANSI C63.4: 2009**

Revision Number	Report Number	Description of Revision	Date of Revision
0	12070199-FCC-E1	Original Report	September 26, 2012
1	13070052-FCC-E1	Amended Report	March 15, 2013

Note1: This is the amended report application (13070052-FCC-E1) of the device, the original submission (12070199-FCC-E1) was granted on September 26, 2012. The differences between the original device and the current one were only changed the **applicant name, trade name, color** and **model name**. The **circuit** and **PCB LAYOUT** are all the same. All above were explained in the attached Declaration Letter.

Note2: The only difference between main model 5300 and serial modes in this report is the **model name**.



2 TECHNICAL DETAILS

Purpose	Compliance testing of MOBILE PHONE with stipulated standard
Applicant / Client	ABBA INNOVATION S.A.S Calle 76 No. 52-40 Local 1,Alto Prado Barranquilla ,Colombia
Manufacturer	Movicom technology co., limited Room 1207 Zhan Tao Technology Bldg ,Long Hua Shenzhen ,China
Laboratory performing the tests	SIEMIC Nanjing (China) Laboratories NO.2-1,Longcang Dadao, Yuhua Economic Development Zone, Nanjing, China Tel:+86(25)86730128/86730129 Fax:+86(25)86730127 Email:info@siemic.com
Test report reference number	13070052-FCC-E1
Date EUT received	September 13, 2012
Standard applied	FCC Part 15 Subpart B Class B: 2012, ANSI C63.4: 2009
Dates of test	September 17 to September18, 2012
No of Units	#1
Equipment Category	JBP
Trade Name	Taxcel, Airus
RF Operating Frequency (ies)	GSM850 TX : 824.2 ~ 848.8 MHz; RX :869.2 ~ 893.8 MHz PCS1900 TX : 1850.2 ~ 1909.8 MHz; RX :1930.2 ~ 1989.8 MHz Bluetooth: 2402-2480MHz
Number of Channels	299 CH (PCS1900) and 124 CH (GSM850) Bluetooth: 79 CH
Modulation	GSM / GPRS: GMSK Bluetooth: GFSK
FCC ID	Z87ABBA5300

3 MODIFICATION

NONE

4 TEST SUMMARY

The product was tested in accordance with the following specifications.
All testing has been performed according to below product classification:

Class B Emission Product

Test Results Summary

Emissions			
Test Standard	Description	Product Class	Pass / Fail
FCC Part 15 Subpart B Class B: 2012	AC Line Conducted Emissions	See Above	Pass
FCC Part 15 Subpart B Class B: 2012	Radiated Emissions	See Above	Pass

All measurement uncertainty is not taken into consideration for all presented test result.

5 MEASUREMENTS, EXAMINATION AND DERIVED RESULTS

5.1 AC Line Conducted Emissions Test Result

Note:

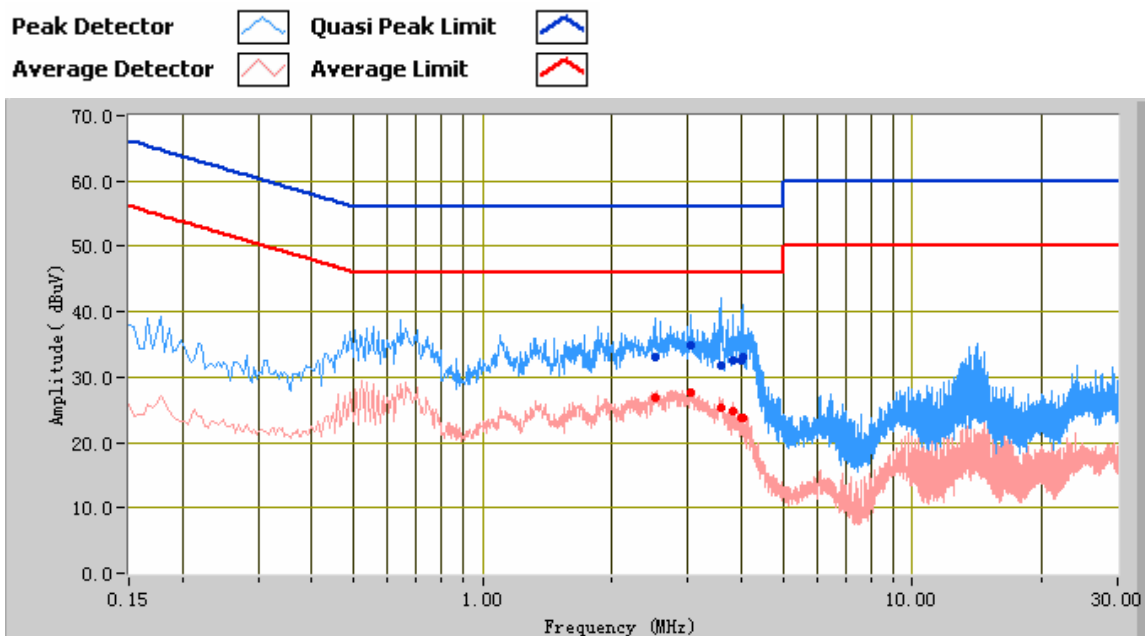
1. All possible modes of operation were investigated. Only the 6 worst case emissions measured, using the correct CISPR and Average detectors, are reported. All other emissions were relatively insignificant.
2. A "-ve" margin indicates a PASS as it refers to the margin present below the limit line at the particular frequency.
3. Conducted Emissions Measurement Uncertainty
All test measurements carried out are traceable to national standards. The uncertainty of the measurement at a confidence level of approximately 95% (in the case where distributions are normal), with a coverage factor of 2, in the range 9 kHz – 30 MHz (Average & Quasi-peak) is $\pm 3.86\text{dB}$.
4. Environmental Conditions

Temperature	22°C
Relative Humidity	50%
Atmospheric Pressure	1009mbar
5. Test date : September 17, 2012
Tested By : Alan Lv

Test Result: Pass

Note: the following test data please refer to report 12070199-FCC-E1.

Test Mode:	Charging & Downloading
-------------------	-----------------------------------

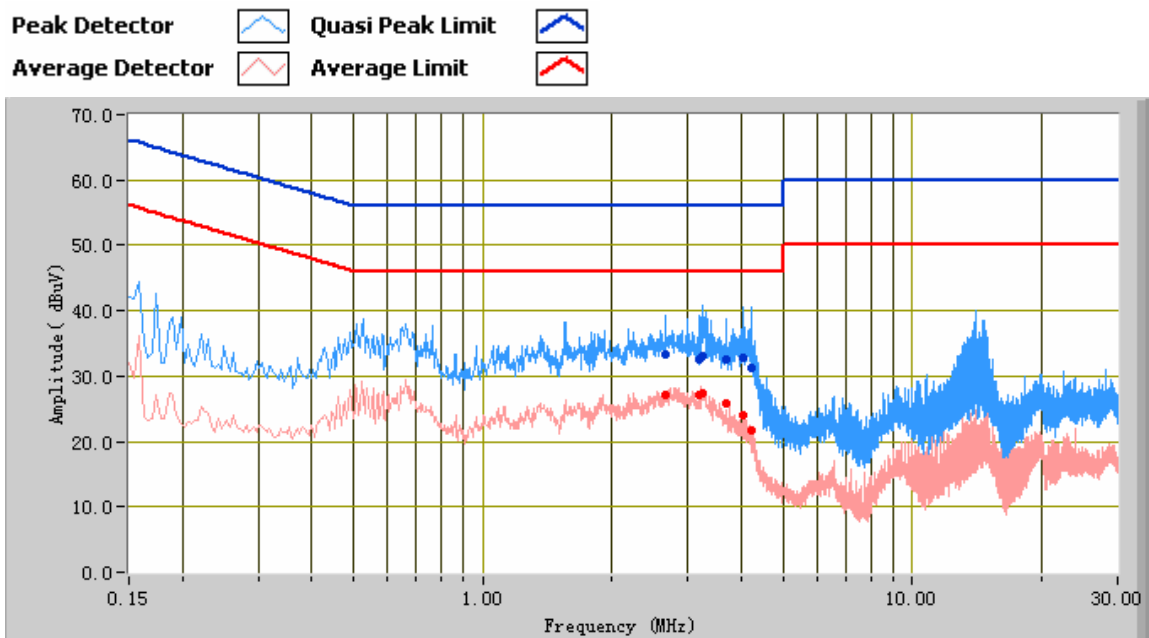


Test Data

Phase Line Plot at 120Vac, 60Hz

Frequency (MHz)	Quasi Peak (dBμV)	Limit (dBμV)	Margin (dB)	Average (dBμV)	Limit (dBμV)	Margin (dB)	Factors (dB)
3.57	31.89	56.00	-24.11	25.36	46.00	-20.64	10.38
4.03	33.07	56.00	-22.93	23.66	46.00	-22.34	10.50
3.98	32.64	56.00	-23.36	23.77	46.00	-22.23	10.50
3.06	34.97	56.00	-21.03	27.52	46.00	-18.48	10.22
3.82	32.56	56.00	-23.44	24.76	46.00	-21.24	10.46
2.51	33.17	56.00	-22.83	26.96	46.00	-19.04	10.20

Test Mode:	Charging & Downloading
-------------------	-----------------------------------



Test Data

Phase Neutral Plot at 120Vac, 60Hz

Frequency (MHz)	Quasi Peak (dBμV)	Limit (dBμV)	Margin (dB)	Average (dBμV)	Limit (dBμV)	Margin (dB)	Factors (dB)
3.23	33.15	56.00	-22.85	27.28	46.00	-18.72	10.27
4.05	32.89	56.00	-23.11	24.01	46.00	-21.99	10.50
4.22	31.32	56.00	-24.68	21.61	46.00	-24.39	10.47
2.67	33.26	56.00	-22.74	27.09	46.00	-18.91	10.20
3.19	32.54	56.00	-23.46	27.04	46.00	-18.96	10.26
3.68	32.54	56.00	-23.46	25.81	46.00	-20.19	10.41

5.2 Radiated Emissions Test Result

Note:

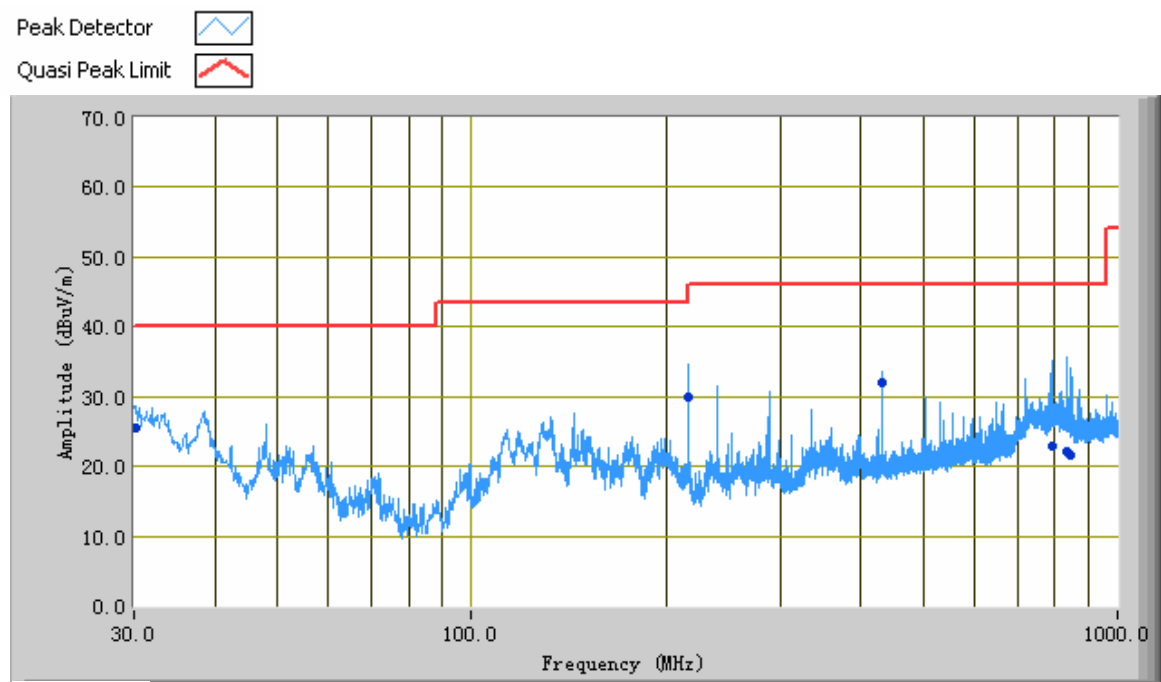
1. All possible modes of operation were investigated. Only the 6 worst case emissions measured, using the correct CISPR detectors, are reported. All other emissions were relatively insignificant.
2. A "-ve" margin indicates a PASS as it refers to the margin present below the limit line at the particular frequency.
3. Radiated Emissions Measurement Uncertainty
All test measurements carried out are traceable to national standards. The uncertainty of the measurement at a confidence level of approximately 95% (in the case where distributions are normal), with a coverage factor of 2, in the range 30 MHz – 1 GHz (QP only @ 3m & 10m) is +5.6dB/-4.5dB (for EUTs < 0.5m X 0.5m X 0.5m), in the range 1 GHz – 6 GHz (PK & AV only @ 3m) is +4dB/-4dB (for EUTs < 0.5m X 0.5m X 0.5m).
4. Environmental Conditions Temperature 22°C
Relative Humidity 50%
Atmospheric Pressure 1009mbar
5. Test date : September 18, 2012
Tested By : Alan Lv

Test Result: Pass

Note: the following test data please refer to report 12070199-FCC-E1.

Test Mode:	Charging & Downloading
------------	------------------------

Below 1GHz



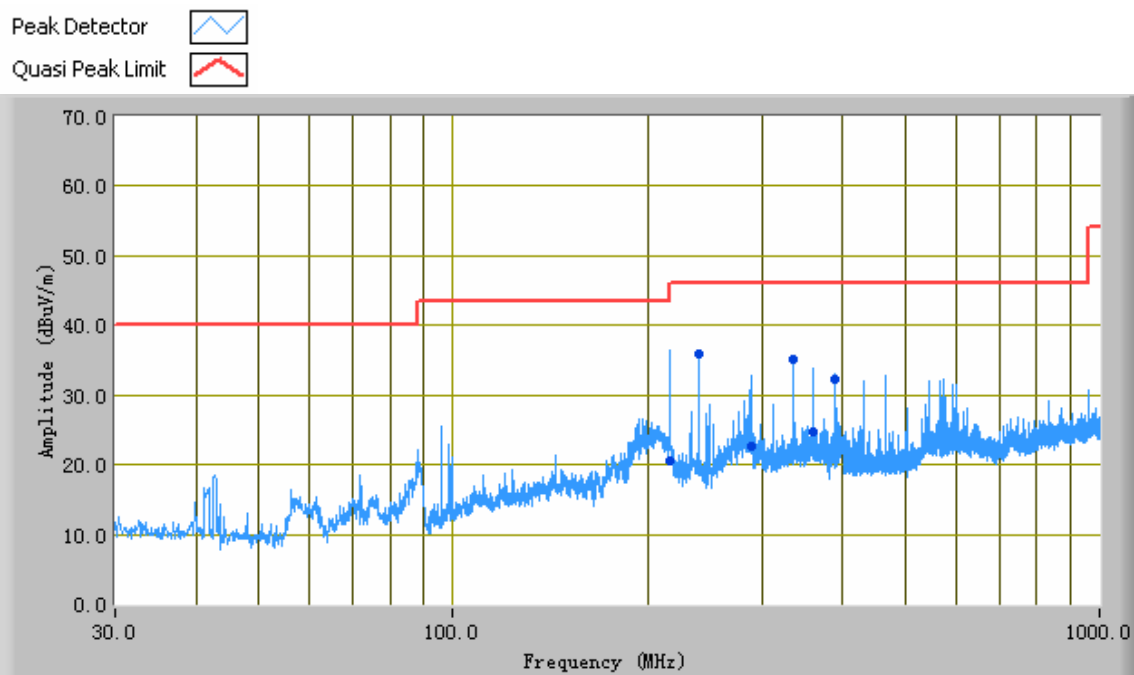
Test Data

Vertical Polarity Plot @3m

Frequency (MHz)	Quasi Peak (dBµV/m)	Azimuth	Polarity (H/V)	Height (cm)	Factors (dB)	Limit (dBµV/m)	Margin (dB)
833.84	22.14	82.00	V	355.00	-18.02	46.00	-23.86
791.89	23.03	338.00	V	258.00	-19.16	46.00	-22.97
216.43	29.96	359.00	V	278.00	-33.59	46.00	-16.04
30.25	25.41	186.00	V	111.00	-20.57	40.00	-14.59
844.80	21.69	285.00	V	383.00	-18.68	46.00	-24.31
432.83	32.12	204.00	V	120.00	-29.19	46.00	-13.88

Test Mode:	Charging & Downloading
-------------------	-----------------------------------

Below 1GHz



Test Data

Horizontal Polarity Plot @3m

Frequency (MHz)	Quasi Peak (dBuV/m)	Azimuth	Polarity (H/V)	Height (cm)	Factors (dB)	Limit (dBuV/m)	Margin (dB)
216.42	20.68	202.00	H	157.00	-34.23	46.00	-25.32
240.00	35.91	260.00	H	134.00	-33.55	46.00	-10.09
336.01	35.14	95.00	H	103.00	-29.71	46.00	-10.86
360.94	25.74	358.00	H	112.00	-28.78	46.00	-20.26
390.00	32.35	322.00	H	278.00	-30.12	46.00	-13.65
288.41	22.59	82.00	H	116.00	-32.02	46.00	-23.41

Note: The data above 1 GHz which below 20 dB to the limit was not recorded.

Annex A. TEST INSTRUMENT & METHOD

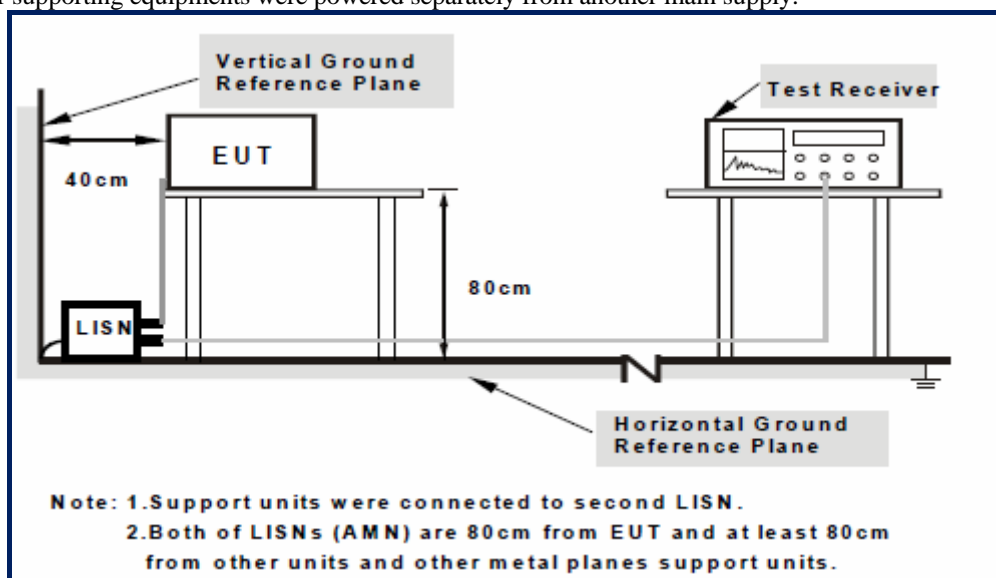
Annex A.i. TEST INSTRUMENTATION & GENERAL PROCEDURES

Instrument	Model	Serial #	Calibration Date	Calibration Due Date
AC Line Conducted Emissions				
R&S EMI Test Receiver	ESPI3	101216	08/26/2012	08/25/2013
Com-Power LISN	LI-115	241090	05/26/2012	05/25/2013
Com-Power Transient Limiter	LIT-153	531021	05/26/2012	05/25/2013
Radiated Emissions				
Hp Spectrum Analyzer	8563E	3821A09023	01/10/2012	01/09/2013
R&S EMI Receiver	ESPI3	101216	08/26/2012	08/25/2013
Antenna (30MHz~6GHz)	JB6	A121411	12/28/2011	12/27/2012
ETS-Lindgren Antenna (1 ~18GHz)	3115	N/A	10/04/2011	10/03/2012
A-INFOMW Antenna (1 ~18GHz)	JXTXLB-10180	J2031081120092	06/25/2012	06/24/2013
Horn Antenna (18~40GHz)	AH-840	N/A	07/23/2012	07/22/2013
Microwave Pre-Amp (18~40GHz)	PA-840	N/A	Every 2000 Hours	
Hp Agilent Pre-Amplifier	8447F	1937A01160	05/26/2012	05/25/2013
MITEQ Pre-Amplifier (0.1 ~ 18GHz)	AMF-7D-00101800-30-10P	1451710	05/26/2012	05/25/2013
Chamber	3m	N/A	04/13/2012	04/12/2013

Annex A.ii. AC LINE CONDUCTED EMISSIONS TEST DESCRIPTION

Test Set-up

1. The EUT and supporting equipment were set up in accordance with the requirements of the standard on top of a 1.5m x 1m x 0.8m high, non-metallic table, as shown in Annex B.
2. The power supply for the EUT was fed through a 50Ω/50μH EUT LISN, connected to filtered mains.
3. The RF OUT of the EUT LISN was connected to the EMI test receiver via a low-loss coaxial cable.
4. All other supporting equipments were powered separately from another main supply.



For the actual test configuration, please refer to the related item – Photographs of the Test Configuration1

Test Method

1. The EUT was switched on and allowed to warm up to its normal operating condition.
2. A scan was made on the NEUTRAL line (for AC mains) or Earth line (for DC power) over the required frequency range using an EMI test receiver.
3. High peaks, relative to the limit line, were then selected.
4. The EMI test receiver was then tuned to the selected frequencies and the necessary measurements made with a receiver bandwidth setting of 10 kHz. For FCC tests, only Quasi-peak measurements were made; while for CISPR/EN tests, both Quasi-peak and Average measurements were made.
5. Steps 2 to 4 were then repeated for the LIVE line (for AC mains) or DC line (for DC power).

Description of Conducted Emission Program

This EMC Measurement software run LabView automation software and offers a common user interface for electromagnetic interference (EMI) measurements. This software is a modern and powerful tool for controlling and monitoring EMI test receivers and EMC test systems. It guarantees reliable collection, evaluation, and documentation of measurement results. Basically, this program will run a pre-scan measurement before it proceeds with the final measurement. The pre-scan routine will run the common scan range from 150 kHz to 30 MHz; the program will first start a peak and average scan on selectable measurement time and step size. After the program complete the pre-scan, this program will perform the Quasi Peak and Average measurement, based on the pre-scan peak data reduction result.

Sample Calculation Example

At 20 MHz

limit = $250\ \mu\text{V}$ = 47.96 dB μV

Transducer factor of LISN, pulse limiter & cable loss at 20 MHz = 11.20 dB

Q-P reading obtained directly from EMI Receiver = 40.00 dB μV
(Calibrated for system losses)

Therefore, Q-P margin = $47.96 - 40.00 = 7.96$ i.e. **7.96 dB below limit**

Annex A.iii. RADIATED EMISSIONS TEST DESCRIPTION

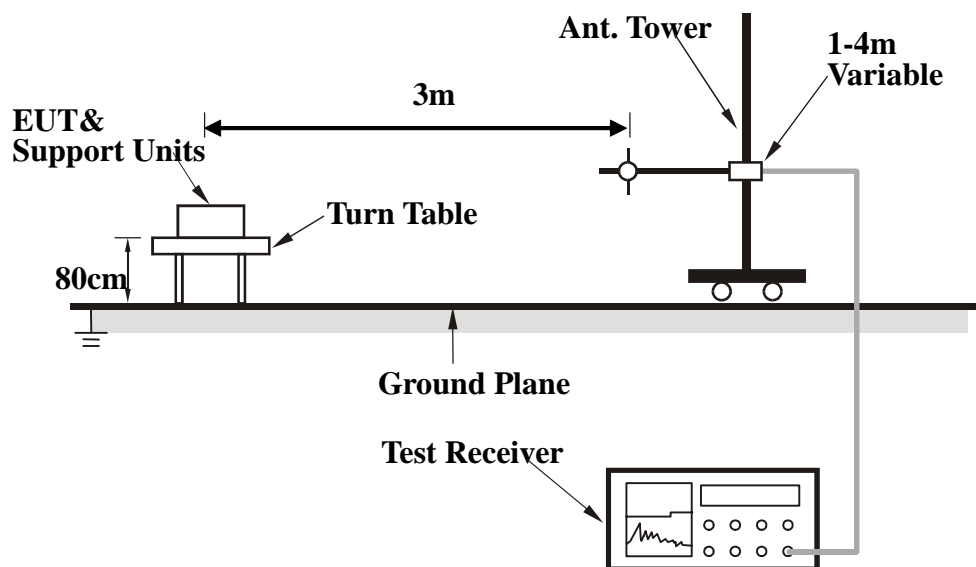
EUT Characterisation

EUT characterisation, over the frequency range from 30 MHz to 10th Harmonic, was done in order to minimise radiated emissions testing time while still maintaining high confidence in the test results.

The EUT was placed in the chamber, at a height of about 0.8m on a turntable. Its radiated emissions frequency profile was observed, using a spectrum analyzer /receiver with the appropriate broadband antenna placed 3m away from the EUT. Radiated emissions from the EUT were maximised by rotating the turntable manually, changing the antenna polarisation and manipulating the EUT cables while observing the frequency profile on the spectrum analyzer / receiver. Frequency points at which maximum emissions occurred, clock frequencies and operating frequencies were then noted for the formal radiated emissions test at the Open Area Test Site (OATS) or EMC chamber.

Test Set-up

1. The EUT and supporting equipment were set up in accordance with the requirements of the standard on top of a 1.5m X 1.0m X 0.8m high, non-metallic table.
2. The filtered power supply for the EUT and supporting equipment were tapped from the appropriate power sockets located on the turntable.
3. The relevant broadband antenna was set at the required test distance away from the EUT and supporting equipment boundary.



For the actual test configuration, please refer to the related item – Photographs of the Test Configuration2

Test Method

The following procedure was performed to determine the maximum emission axis of EUT:

1. With the receiving antenna is H polarization, rotate the EUT in turns with three orthogonal axes to determine the axis of maximum emission.
2. With the receiving antenna is V polarization, rotate the EUT in turns with three orthogonal axes to determine the axis of maximum emission.
3. Compare the results derived from above two steps. So, the axis of maximum emission from EUT was determined and the configuration was used to perform the final measurement.

Final Radiated Emission Measurement

1. Setup the configuration according to figure 1. Turn on EUT and make sure that it is in normal function.
2. For emission frequencies measured below 1 GHz, a pre-scan is performed in a shielded chamber to determine the accurate frequencies of higher emissions will be checked on a open test site. As the same purpose, for emission frequencies measured above 1 GHz, a pre-scan also be performed with a 1 meter measuring distance before final test.
3. For emission frequencies measured below and above 1 GHz, set the spectrum analyzer on a 100 kHz and 1 MHz resolution bandwidth respectively for each frequency measured in step 2.
4. The search antenna is to be raised and lowered over a range from 1 to 4 meters in horizontally polarized orientation. Position the highness when the highest value is indicated on spectrum analyzer, then change the orientation of EUT on test table over a range from 0° to 360° with a speed as slow as possible, and keep the azimuth that highest emission is indicated on the spectrum analyzer. Vary the antenna position again and record the highest value as a final reading.
5. Repeat step 4 until all frequencies need to be measured were complete.
6. Repeat step 5 with search antenna in vertical polarized orientations.

During the radiated emission test, the Spectrum Analyzer was set with the following configurations:

Frequency Band (MHz)	Function	Resolution bandwidth	Video Bandwidth
30 to 1000	Peak	100 kHz	100 kHz
Above 1000	Peak	1 MHz	1 MHz
	Average	1 MHz	10 Hz

Sample Calculation Example

The field strength is calculated by adding the Antenna Factor and Cable Factor, and subtracting the Amplifier Gain (if any) from the measured reading. For the limit is employed average value, therefore the peak value can be transferred to average value by subtracting the duty factor. The basic equation with a sample calculation is as follows:

$$\text{Peak} = \text{Reading} + \text{Corrected Factor}$$

where

Corr. Factor = Antenna Factor + Cable Factor - Amplifier Gain (if any)

And the average value is

$$\text{Average} = \text{Peak Value} + \text{Duty Factor or}$$

$$\text{Set RBW} = 1 \text{ MHz, VBW} = 10 \text{ Hz.}$$

Note:

If the measured frequencies are fall in the restricted frequency band, the limit employed must be quasi peak value when frequencies are below or equal to 1 GHz. And the measuring instrument is set to quasi peak detector function.

Radiated emission test facilities for frequencies above 1 GHz (ANSI C63.4-2009 Chapter 5.5)

Currently, test site reference validation requirements above 1 GHz have not been established. However, facilities suitable for measurements in the frequency range 30 MHz to 1000 MHz are considered suitable for the frequency range 1 GHz to 40 GHz with RF absorbing material covering the ground plane such that the site validation criterion called out in CISPR 16-1-4:2007 is met, or alternatively covering a minimum area of 2.4 m by 2.4 m (for a 3 m test distance) between the antenna and the EUT using RF absorbing material with a minimum-rated attenuation of 20 dB (for normal incidence) up to 18 GHz. For separation distances greater than 3 m, a proportional increase in the area of suitable absorbing material is required.

Annex B. EUT AND TEST SETUP PHOTOGRAPHS

Annex B.i. Photograph 1: EUT External Photo



EUT – The Whole Package View



Adapter - Front View



EUT - Front View



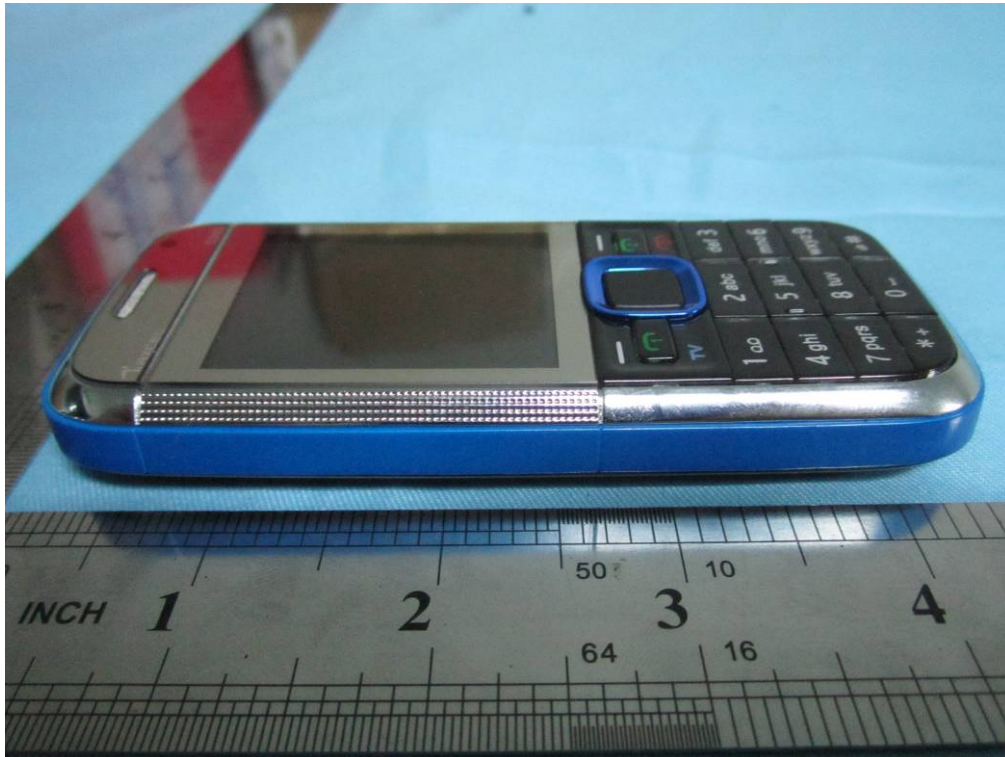
EUT - Rear View



EUT - Top View



EUT - Bottom View



EUT - Left View



EUT - Right View

Annex B.ii. Photograph 2: EUT Internal Photo



Cover Off - Top View



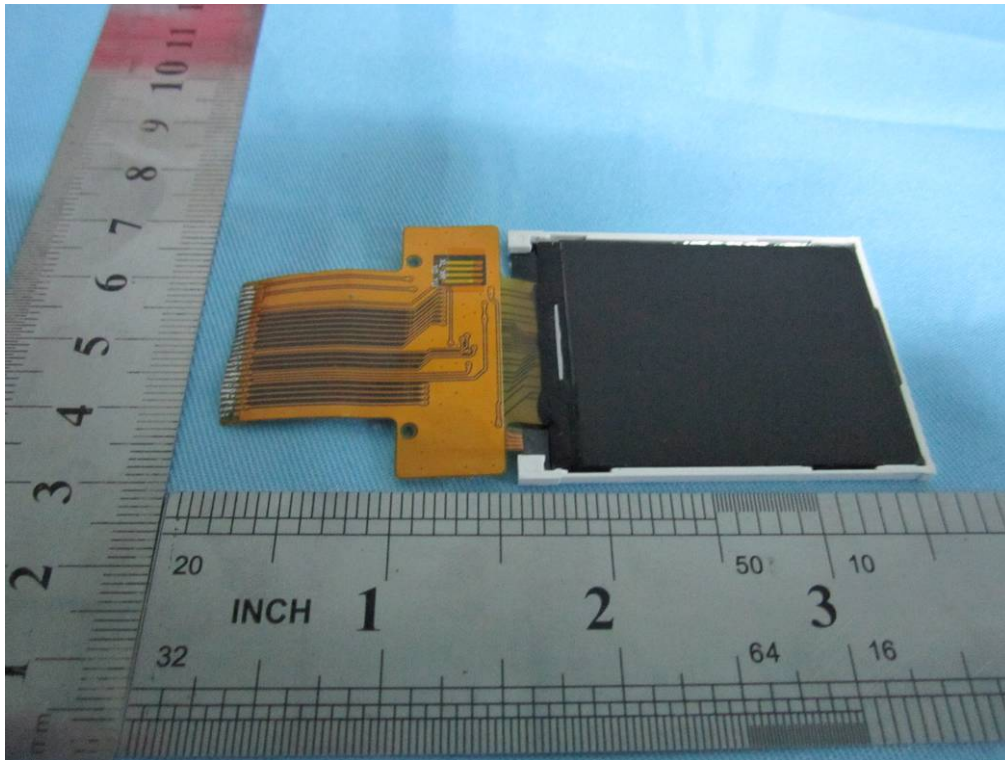
Cover Off - Bottom View



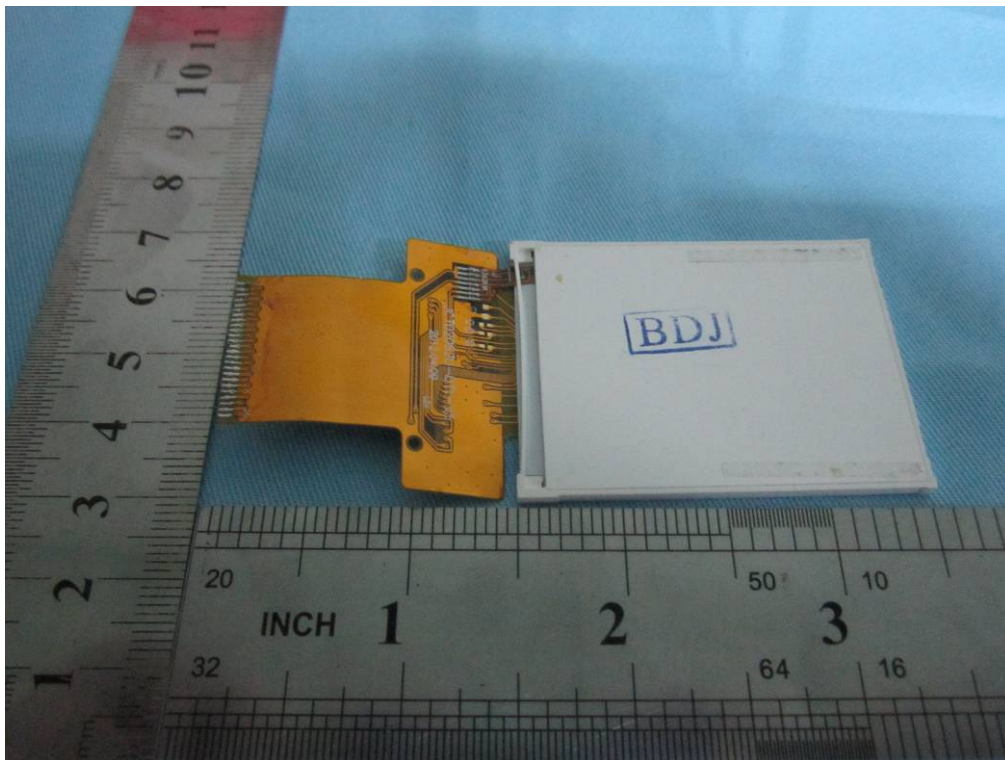
Battery - Top View



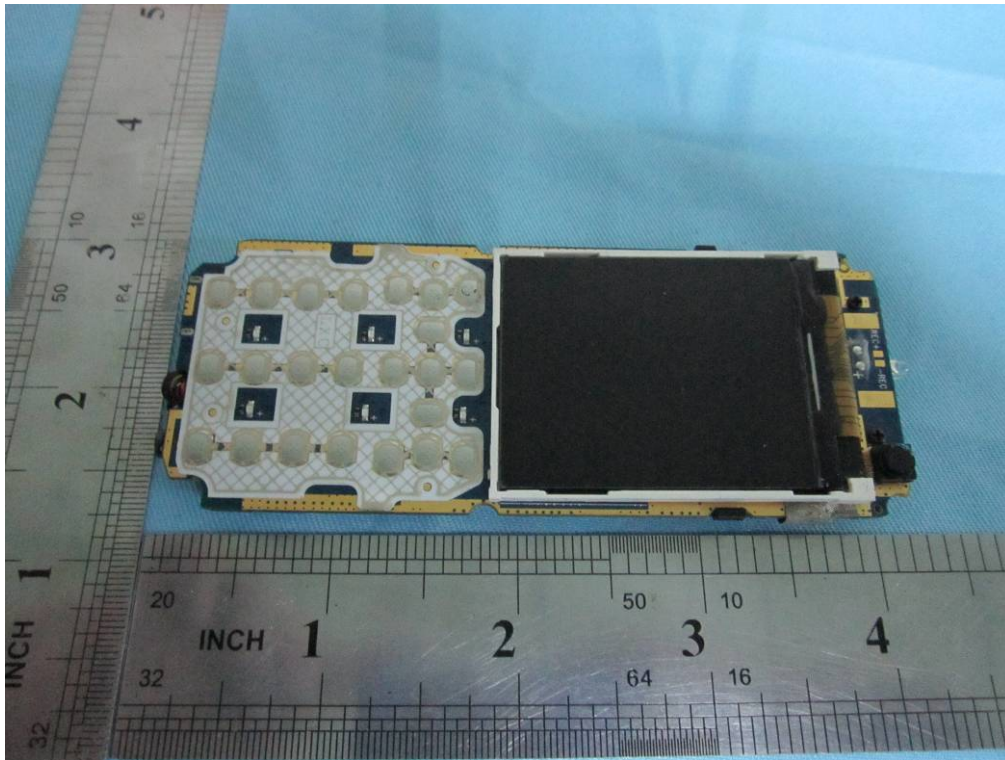
Battery - Bottom View



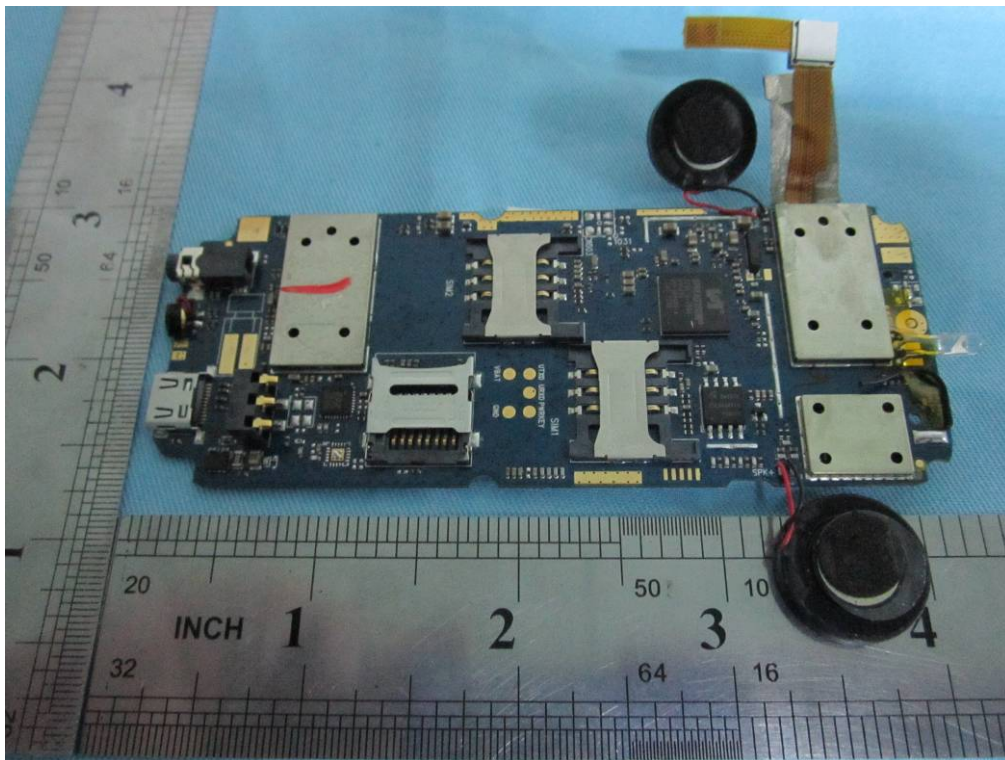
LCD - Top View



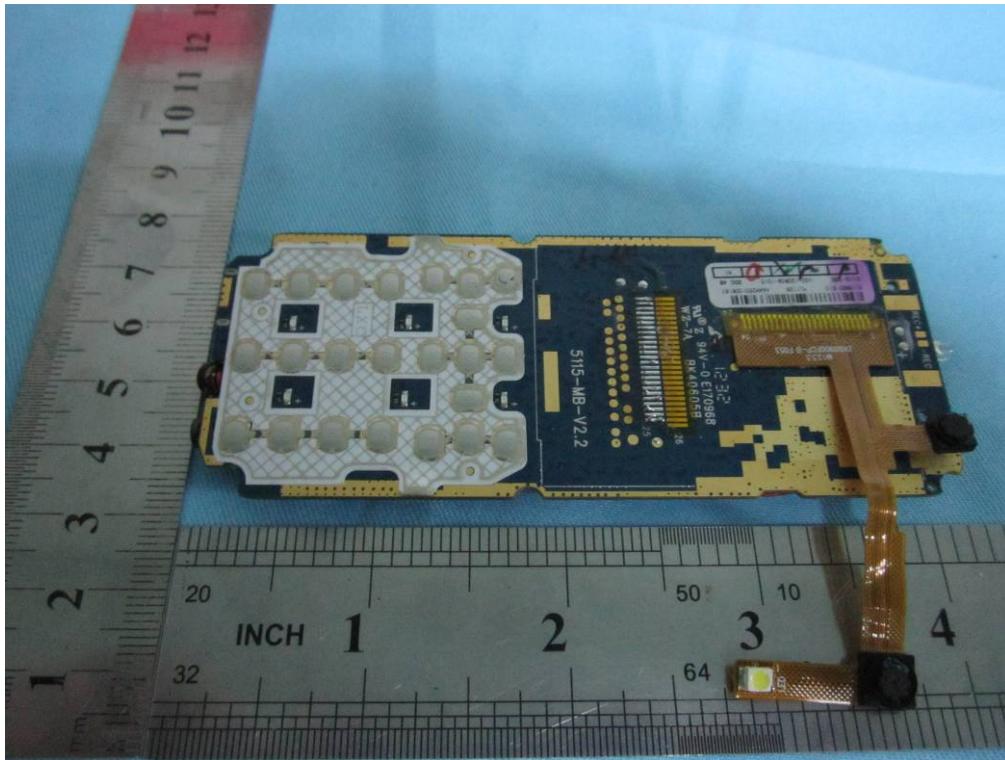
LCD - Bottom View



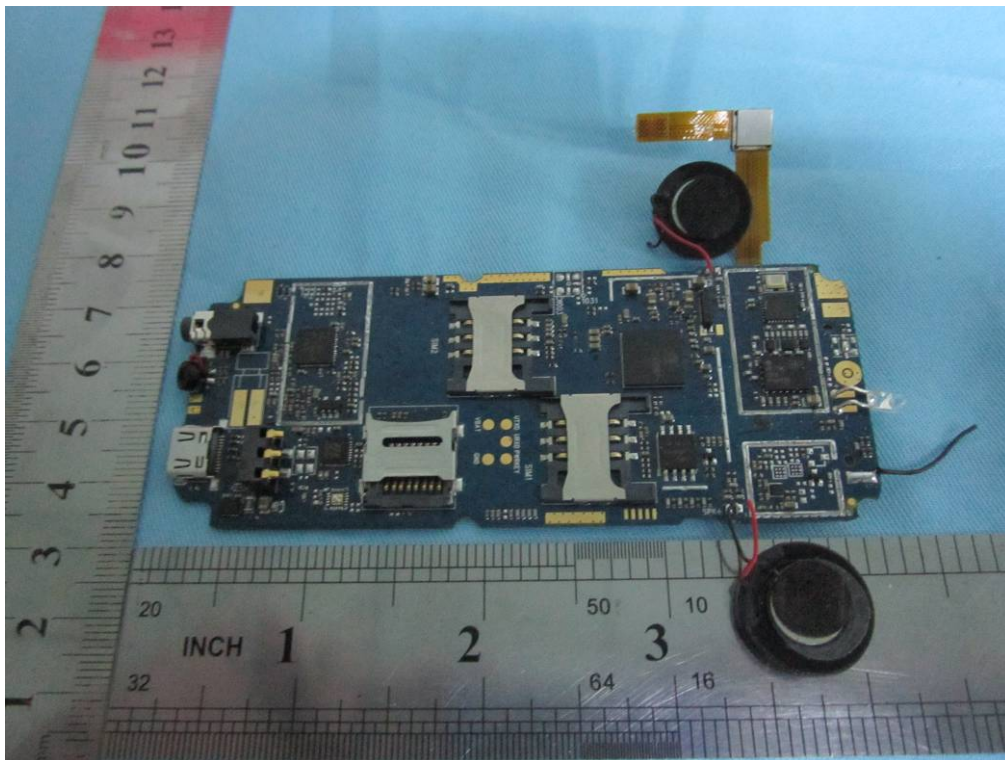
Uncover - Front View



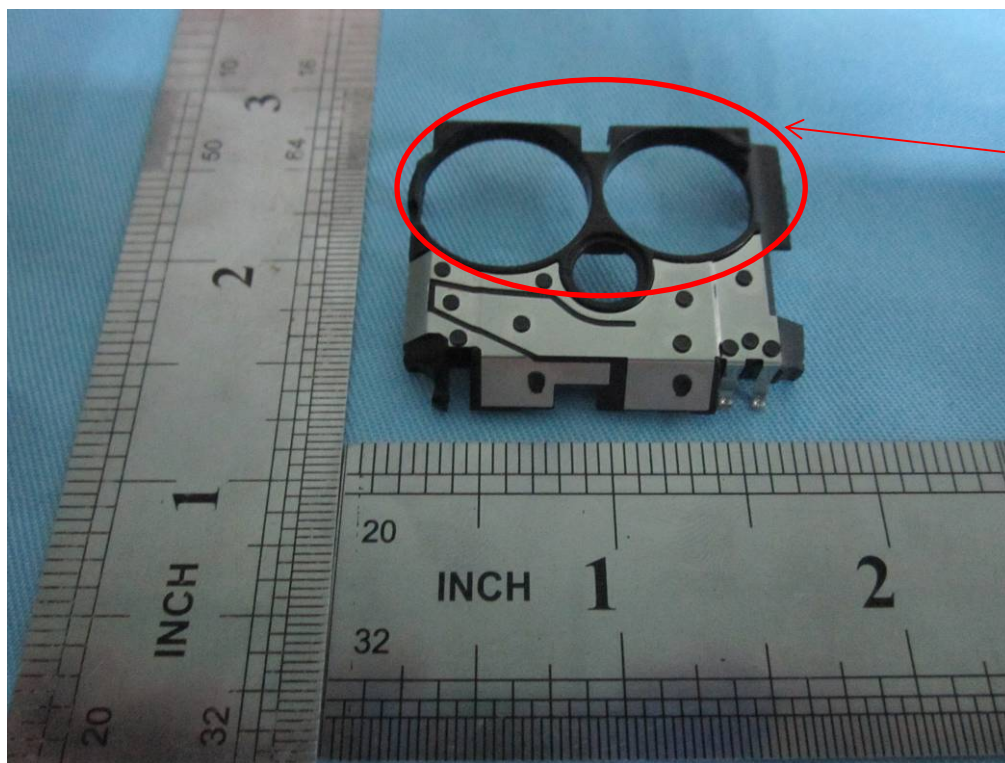
Uncover - Rear View



Uncover without LCD - Top View

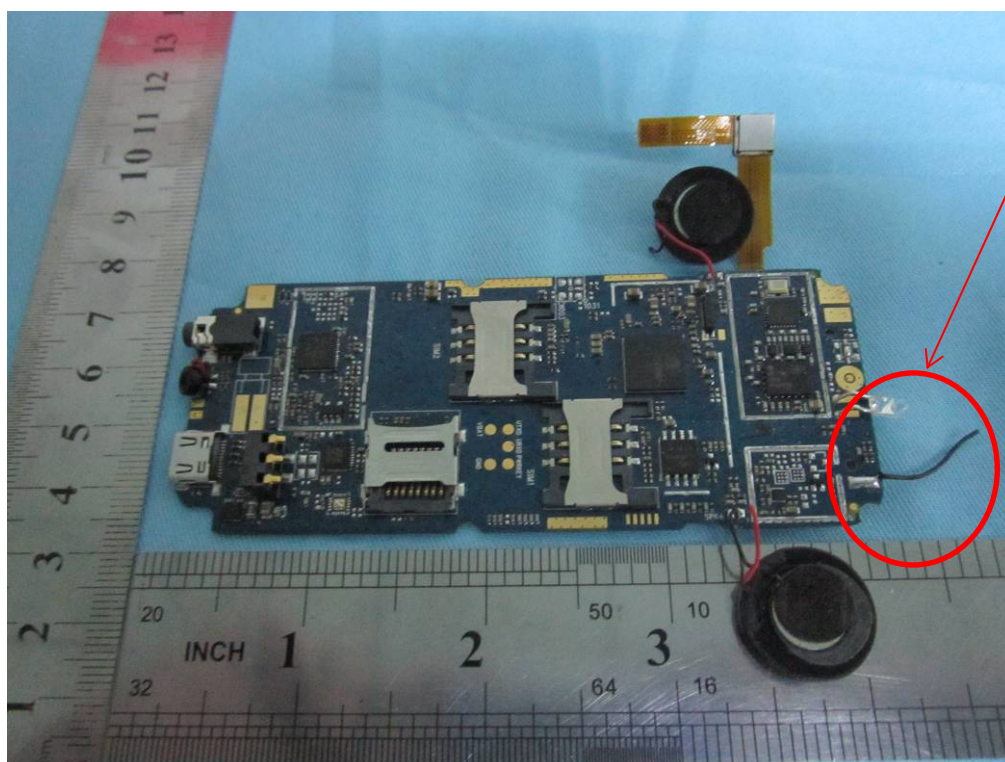


Uncover Without Shielding - Top View



GSM Antenna

GSM Antenna - Top View



Bluetooth Antenna

Bluetooth Antenna - Top View

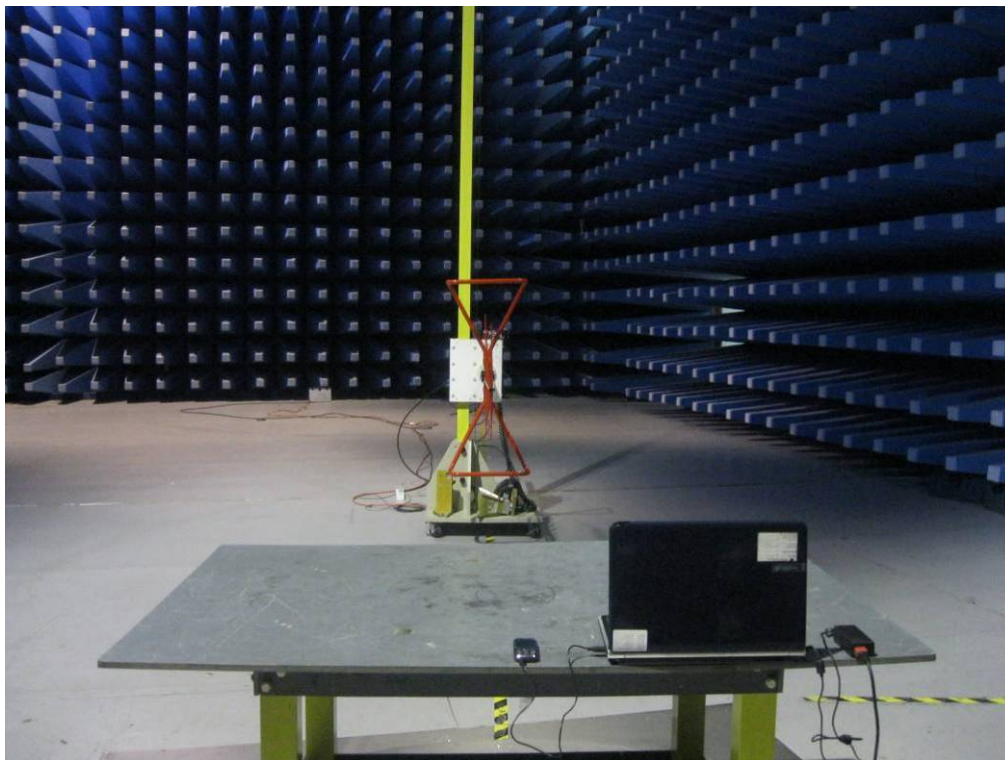
Annex B.iii. Photograph 3: Test Setup Photo



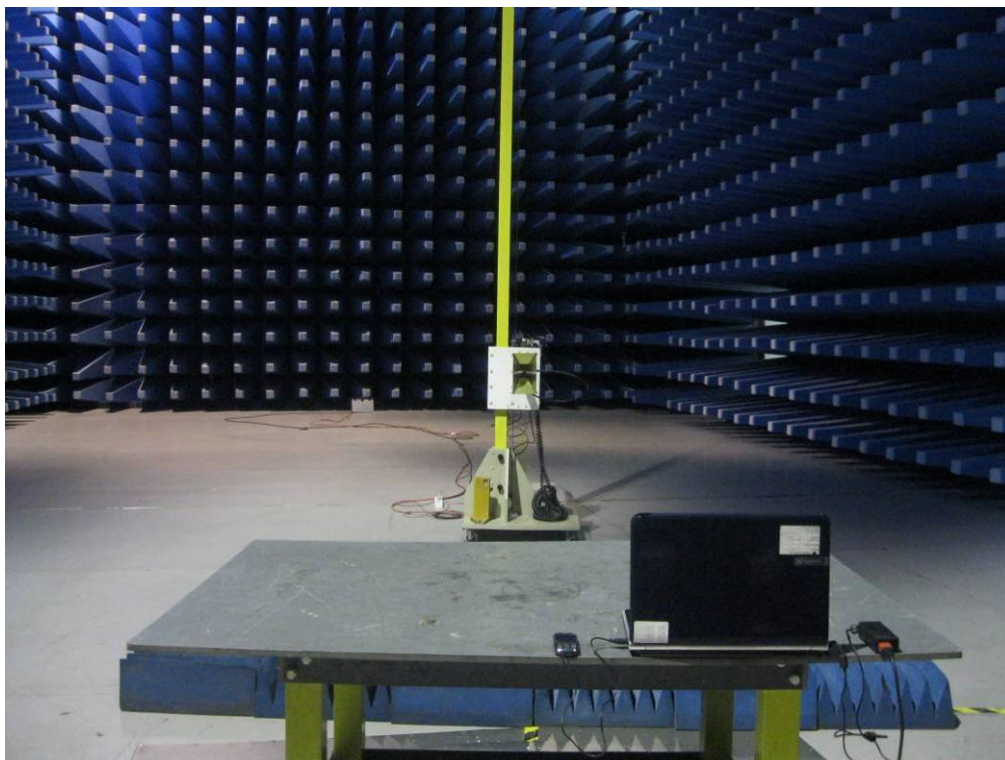
Conducted Emissions Test Setup Front View



Conducted Emissions Test Setup Side View



Radiated Emissions Test Setup Below 1GHz - Front View



Radiated Emissions Test Setup Above 1GHz - Front View

Annex C. TEST SETUP AND SUPPORTING EQUIPMENT

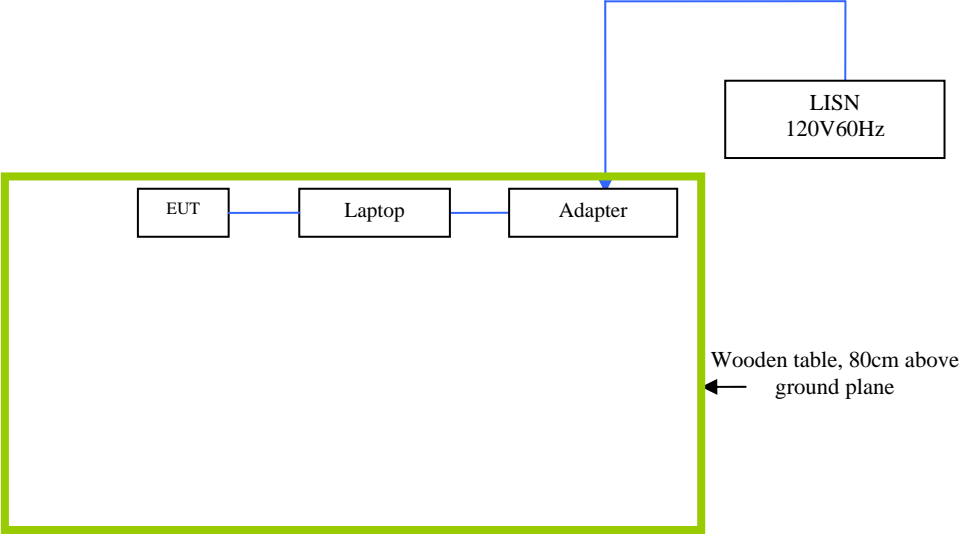
EUT TEST CONDITIONS

Annex C. i. SUPPORTING EQUIPMENT DESCRIPTION

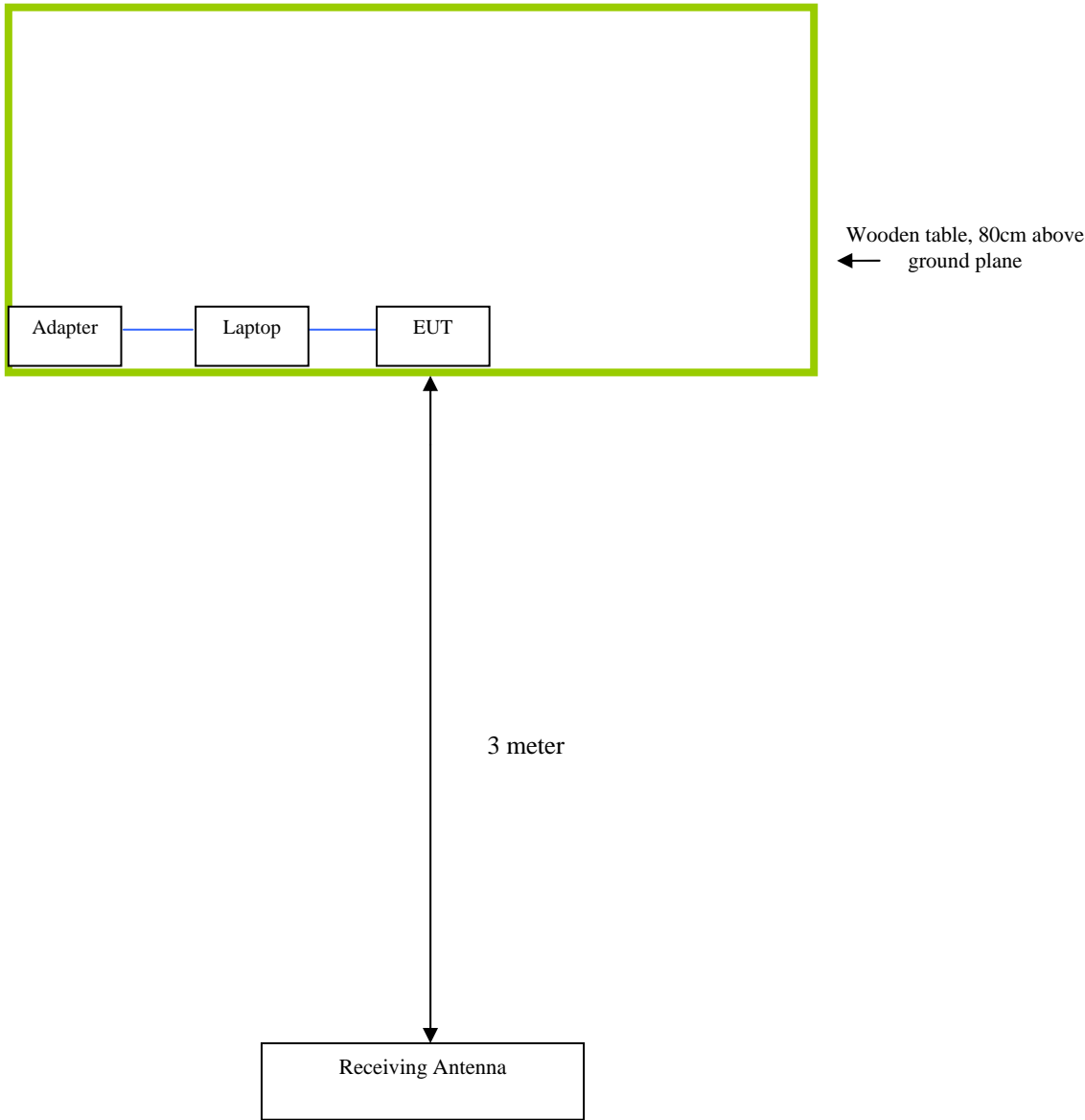
The following is a description of supporting equipment and details of cables used with the EUT.

Equipment Description (Including Brand Name)	Model & Serial Number	Cable Description (List Length, Type & Purpose)
Gateway Laptop	MS2288 & LXWHF02013951C3CA92200	N/A

Block Configuration Diagram for AC Line Conducted Emissions



Block Configuration Diagram for Radiated Emissions



Annex C.ii. EUT OPERATING CONDITIONS

The following is the description of how the EUT is exercised during testing.

Test	Description Of Operation
Emissions Testing	Charging & Downloading

Annex D. USER MANUAL / BLOCK DIAGRAM / SCHEMATICS / PART LIST

Please see attachment

Annex E. DECLARATION OF SIMILARITY

ABBA INNOVATION S.A.S

To: SIEMIC ,2206 Ringwood Avenue, San Jose, C, USA

Declaration letter

Dear Sir,

We declare that there is no electrical change has been made to the equipment that alters the compliance characteristics. The difference between model 5300, 5130, A1, A2, A3, A5, A7, A6, A8 and original model 5130 in the report 12070199 which was granted by SIEMIC are different logo and color.

Thank you!

Thank you!

Signature:

Printed name/title: Ernesto / Manager

Tel: +86-13823375673

Fax: 0755-83496050

Address: Calle 76 No. 52-40 Local 1, Alto Prado Barranquilla , Colombia