


Step by Step to Get Started

STEP1 Layout your Note Pad on a flat surface



The base unit on top of the notepad should turn on automatically once you open the Note Pad, with the  indicator blinking. It is not necessary to press any button turn it on.

Note: For initial use, your base unit needs to be charged for about 3 hours. Connect your base unit to your PC using the USB cable for charging.

STEP2 Write on the Note Pad



Pick up the Digital Pen attached on the Note Pad and write normally.

Note:

- a. Be careful to hold the pen in a way that does not block the signals sent from the tip of the pen to the base unit.
- b. Make sure the pen point is 1.5cm away from the unit. Otherwise, the base unit may not capture your handwriting.

STEP3 Turn over the Page

You can start a new page once you've finished one. Just turn over the page and then lift the base unit by its end to reverse.



STEP4 Close your Note Pad

Close your Note Pad once you finished all pages. All of your handwritten notes should be saved in your base unit.

Before Using

Charge the Battery

For initial use, your base unit needs to be charged for about 3 hours.

Connect your base unit to your PC using the USB cable for charging.



Install Pen Batteries

- Remove the battery compartment cover.
- Install two SR41 batteries, with the positive poles facing up as shown (Use the enclosed SR41 batteries).
- Replace battery compartment cover.



WARNING:

Do not attempt to open the pen. This may cause the pen to malfunction.



Installing Ink Refill

To insert a new refill,

1. Slide the new refill into the tip of the pen.
2. Gently press the new refill until it is lodged securely in place.

To replace the ink refill,

1. Detach the cap from the digital pen.
2. Clamp the ink refill with the refill extractor. Hold the pen firmly, and apply pressure with the extractor against it.
3. Pull the used refill out.



View Notes on Computer

1. Installing the Note Manager

One of the provided CDs contains the Note Manager software which is required. Simply insert the CD and then follow the wizard's instructions.



2. Connecting your Digital Pen to your Computer.

Plug the USB cable to the USB interface of the Note Pad and computer.



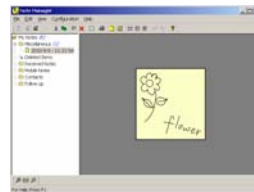
3. Uploading your Mobile Notes

First make sure your Note Manager is running. Now simply connect your base unit to your USB port.

The Note Manager application will detect your unit and will prompt you to upload your notes. Select "Yes" to start transferring your notes.

4. Using the Note Manager

The Note Manager can be used for storing, viewing, searching, copying and exporting notes. It is set up in Windows Explorer format, which allows you to browse through your files in the left pane and view them in the right pane.



The Note Manager contains buttons that give you access to the most commonly used menu commands.

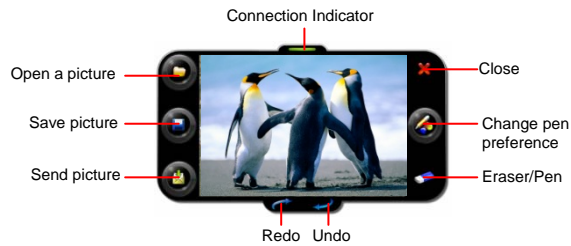


The following table contains a list of each button in the toolbox together with a description of its function.

Button	Description
	UPLOAD – When in Connected Mode, you can upload all your notes from the mobile unit to your PC using the Digital Pen application
	Note To Text - Convert handwritten note to texts. (only available in Windows Vista or 7)
	Convert your note to text using MyScript® Notes. (Only available if the recognition software is installed.)
	Joint multiple notes into one.
	CUT – Cuts the selected note and saves it to the clipboard
	COPY – Copies the selected note and saves it to the clipboard
	PASTE – Pastes whatever was last copied or cut to the clipboard
	DELETE – Deletes the selected note/notes
	EDIT NOTE – Allows you to edit a selected note
	PRINT -- Prints the selected note/notes
	SHOW AS STICKY NOTE – Make your Note as Sticky Note
	SHOW AS PAPER HOLDER – Make your Note as a paper holder
	SMALL THUMB – Displays small thumbnails in the Note Manager view
	MEDIUM THUMB - Displays medium sized of thumbnails in the Note Manager view
	LARGE THUMB - Displays large thumbnails in the Note Manager view
	NOTE MODE
	MOUSE MODE – TURNS YOUR PEN INTO A MOUSE
	ABOUT – Provides you with your Digital Pen software version information

Using the Photo Sketcher

Photo Sketcher gives you the ability to sketch on top of any jpeg picture file. You can add annotations on top of any picture. Then, you can save it and share it.



Installing Photo Sketcher

Insert the Note Manager application CD into your PC, select "Photo Sketcher" and then install it following the wizard's instruction.


A desktop icon will be added once installation complete.




Using Photo Sketcher

Run the Photo Sketcher by clicking the desktop icon.

1) Connect the Digital Pen


Before you can use the 'Photo Sketcher', your Digital Pen must be connected to your computer properly. A connection icon will be Green , indicating the Digital Pen is properly connected.

(2) Load a picture file by clicking the application 'File' icon . Browse to the file you would like to edit and select 'Open'.

(3) Sketch on a picture file

Once a picture is loaded, use your Digital Pen to sketch anywhere you like on the picture. Use the Pen, while hovering, to get to the point in which you'd like to sketch. Then, simply use the Pen as you usually use a Pen, and sketch.

(4) Save a file

To save a picture, press the  icon. Now select a path and a name for your file and select 'Save'.

Using your Digital Pen on Smart Phones

With the built-in bluetooth technology, your Digital Pen can write or make drawings on smart phones with Blackberry or Google Android system.



Turn on Bluetooth

Firstly turn on the Bluetooth by pressing the Bluetooth button on the base unit.

The Bluetooth indicator  should blink.



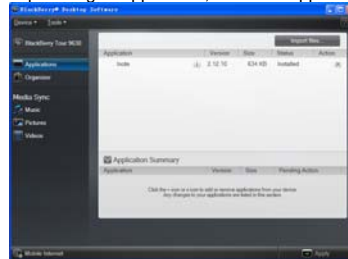
Working with Blackberry Devices

1. Install the Application

In order to use the device on Blackberry devices, you first need to install the Note Manger application on the blackberry. You have two methods of installing the application.

Method1 (on PC):

- (1)Download the iNote firmware from AppWorld via Internet.
- (2)Make sure the Blackberry "Desktop Manager" application is running.
- (3)Connect your Blackberry device to the PC.
- (4)In the Blackberry "Desktop Manager" application, click the "Application".



- (5)Click "Import files" to import the iNote firmware.
- (6)Click "Apply" to start installation.
- (7)The application is installed to your Blackberry successfully.

Method 2(on Blackberry Device):

Alternatively, you can install the application directly on your Blackberry.


- (1) Connect to the Blackberry Device's supplied AppWorld and download the iNote SW;
- (2) Run the iNote application from the Blackberry Device's Download folder.

2. Turning the Digital Pen base unit on

To turn the Digital Pen base unit ON, **press & hold** the button on its top until you see the number of notes stored in memory.

3. Pairing the Bluetooth

In order to use the Digital Pen, you first need to pair the Digital Pen base unit with your Blackberry's Bluetooth. This procedure should only be done once. Please do as follows:


- (1) Make sure your BlackBerry is turned on.
- (2) Make sure the Bluetooth is enabled on your BlackBerry.
- (3) Make sure the Digital Pen base unit is turned on.
- (4) Click the Bluetooth button on top of the Digital Pen base unit.
- (5) In the home screen, click the  button.
- (6) Click the **'Manage Connections'** icon.
- (7) Select **'Setup Bluetooth'**.
- (8) Click the **'Search'**.
- (9) Your Blackberry should find a device named **'mobile pen'**. Select this device.
- (10) A passkey is required: enter 0000 as the passkey.
- (11) Click **'Enter'**.
- (12) The LED on the Digital Pen base unit should be ON (Not flashing). Your Blackberry is now successfully paired with the Digital Pen.

4. Running the application

Make sure you turn the Digital Pen base unit ON. To turn it on, **press & hold** the button on its top.

To run the application,

- click the 'Downloads' icon in your Blackberry.

- click the 'iNote' application icon .

Note: Make sure your Bluetooth is turned on.


5. Using iNote application

Taking Notes in 'Connected Mode'

To start a new note, freely use the Pen to write on your paper. Everything you write is shown on your Blackberry screen.


Saving a note

Once you are done with your note, you can save it. To do so, do as follows:

- Click the  button.
- Select **'Save'**.

Uploading Notes from Pen memory

To upload notes from the pen memory:

- Click the  button.
- Select **'Pen Memory'**.

- Select 'Upload'.

Photo Sketcher

You can sketch on any jpeg using your digital pen. Sketches can be done on existing images or pictures taken by the device camera.

To start sketching:

- Click the  button.
- Select 'PhotoSketcher'.

To sketch on an existing photo:


- Select 'Open'.
- Select a file from the file list.
- Use the pen to sketch on the image.

To sketch on an existing photo:


- Select 'Snapshot' to open an existing photo.
- Take a snapshot using the Blackberry camera.
- Use the pen to sketch on the image.

Setting picture properties

Within a picture, you can change the pen color, width and picture scale.

- Click the  button.
- Select 'Properties'.


Change your selections.

- Click the  button.
- To save the changes, select 'Save'.
- To discard the changes, select 'Discard'.


Load a note

You can load a new note or a note from the notes list.

To open a new note:

- Click the  button.
- Select 'Open New'.



To load a note from the notes list:

- Click the  button.
- Select a note from the file list.
- Select 'Open'.

Note: In Touch screen device you can simply click the file from the list.

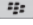
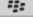
Send a note by eMail/MMS

You can send a note by eMail or by MMS.

- Click the  button.
- Select 'Send'.
- Select 'Send Mail' or 'Send MMS'.
- You can add recipients, change subject and body.
- Click the  button.
- Select 'Send'.

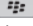
Setting note properties

You can change a note background color, Pen color and width

- Click the  button.
- Select 'Properties'.
- Change your selections.
- Click the  button.
- To save the changes, select 'Save'.
- To discard the changes, select 'Discard'.

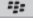
Deleting a note from list

To delete notes from the notes list:

- In the notes list, select a note.
- Click the  button.
- Select 'Delete'.

Deleting notes from Pen memory

To delete notes from the pen memory:

- Click the  button.
- Select 'Pen Memory'.
- Select 'Erase memory'.

FCC Warning:

- This device complies with Part 15 of the FCC Rules. Operation is subject to the following two conditions:
- (1) this device may not cause harmful interference, and
- (2) this device must accept any interference received, including interference that may cause undesired operation.
- Changes or modifications not expressly approved by the party responsible for compliance could void the user's authority to operate the equipment.
- NOTE: This equipment has been tested and found to comply with the limits for a Class B digital device, pursuant to Part 15 of the FCC Rules. These limits are designed to provide reasonable protection against harmful interference in a residential installation. This equipment generates, uses and can radiate radio frequency energy and, if not installed and used in accordance with the instructions, may cause harmful interference to radio communications. However, there is no guarantee that interference will not occur in a particular installation. If this equipment does cause harmful interference to radio or television reception, which can be determined by turning the equipment off and on, the user is encouraged to try to correct the interference by one or more of the following measures:
 - -- Reorient or relocate the receiving antenna.
 - -- Increase the separation between the equipment and receiver.
 - -- Connect the equipment into an outlet on a circuit different from that to which the receiver is connected.
 - -- Consult the dealer or an experienced radio/TV technician for help.

RF warning statement:

The device has been evaluated to meet general RF exposure requirement. The device can be used in portable exposure condition without restriction.

CE in which countries where the product may be used freely: Germany, UK, Italy, Spain, Belgium, Netherlands, Portugal, Greece, Ireland, Denmark, Luxembourg, Austria, Finland, Sweden, Norway and Iceland. France: except the Frequency 2457MHz to 2472MHz.