



**SIEMIC, INC.**

Accessing global markets

Title: EMC Test Report for Key Management Cabinet  
Main Model: UT-059B\_UL  
Serial Model: N/A  
To: FCC Part 15 Subpart B Class B: 2013 , ANSI C63.4:2009

Report No.: 14020514-FCC-E1  
Issue Date: July 01, 2014  
Page: 23 of 39  
www.siemmic.com  
www.sinmic.com.cn

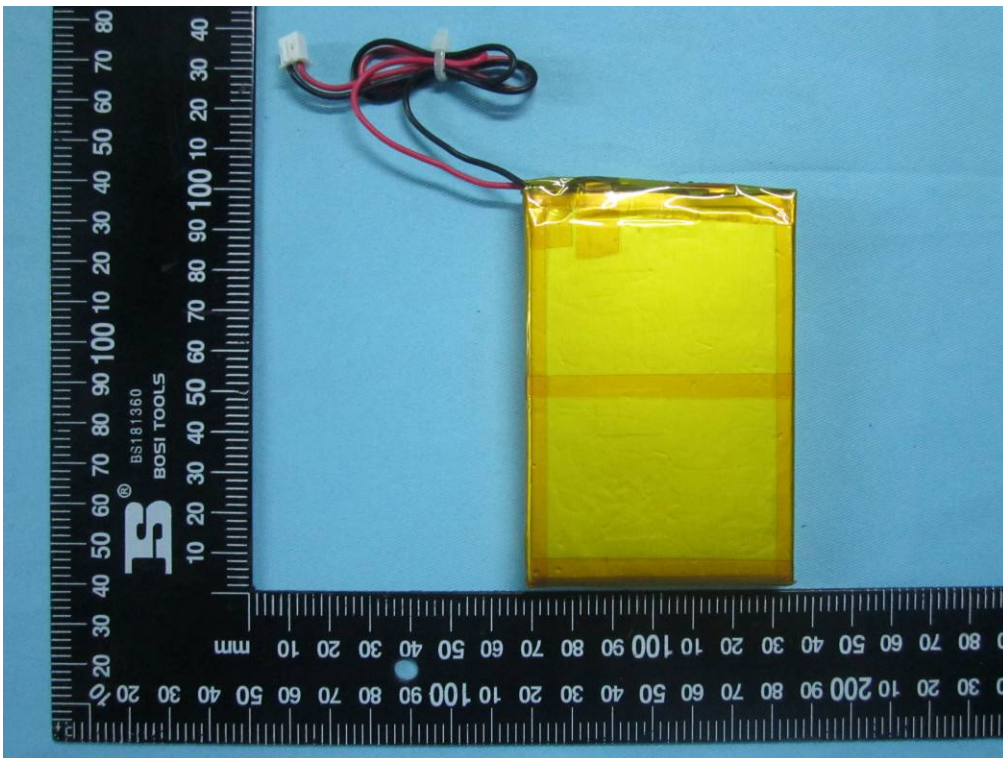
**Annex B.ii. Photograph 2: EUT Internal Photo**



Cover Off - Top View



Battery - Top View



Battery - Bottom View



**SIEMIC, INC.**

Accessing global markets

Title: EMC Test Report for Key Management Cabinet

Main Model: UT-059B\_UL

Serial Model: N/A

To: FCC Part 15 Subpart B Class B: 2013 , ANSI C63.4:2009

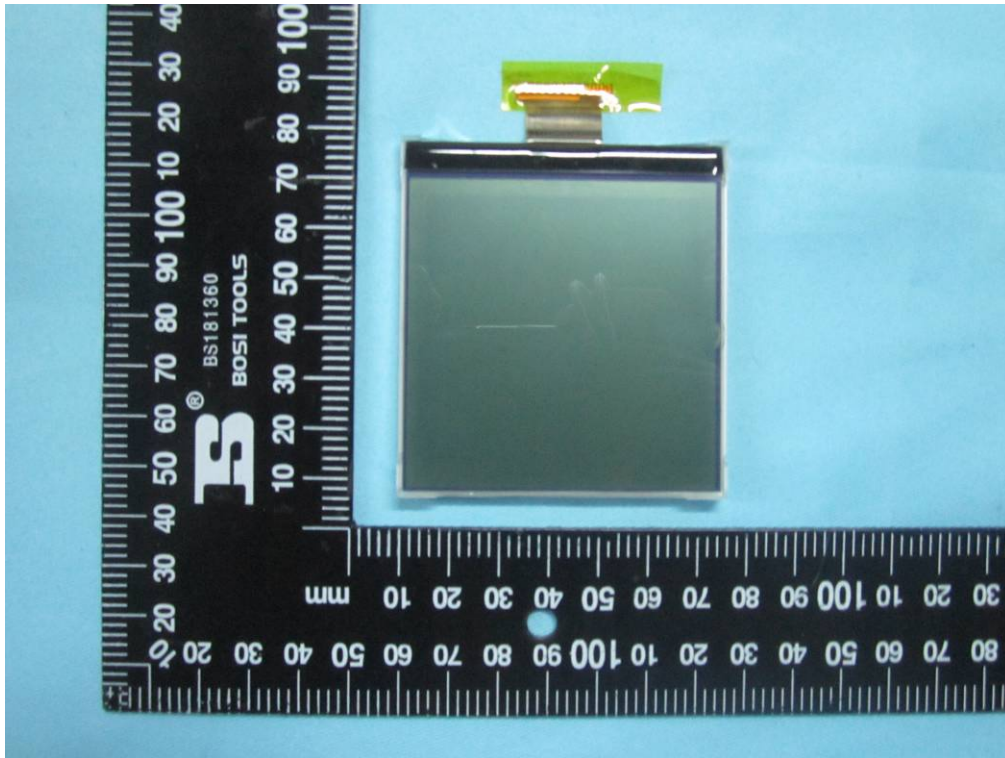
Report No.: 14020514-FCC-E1

Issue Date: July 01, 2014

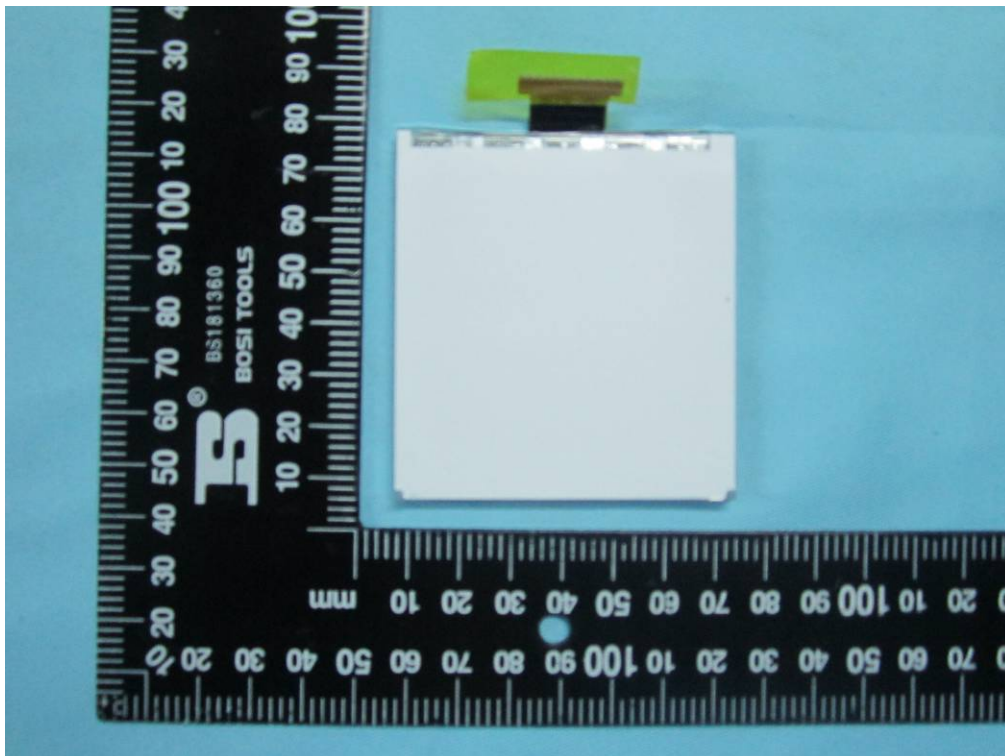
Page: 25 of 39

[www.siemic.com](http://www.siemic.com)

[www.sinmic.com.cn](http://www.sinmic.com.cn)



LCD – Front View



LCD – Rear View



**SIEMIC, INC.**

Accessing global markets

Title: EMC Test Report for Key Management Cabinet

Main Model: UT-059B\_UL

Serial Model: N/A

To: FCC Part 15 Subpart B Class B: 2013 , ANSI C63.4:2009

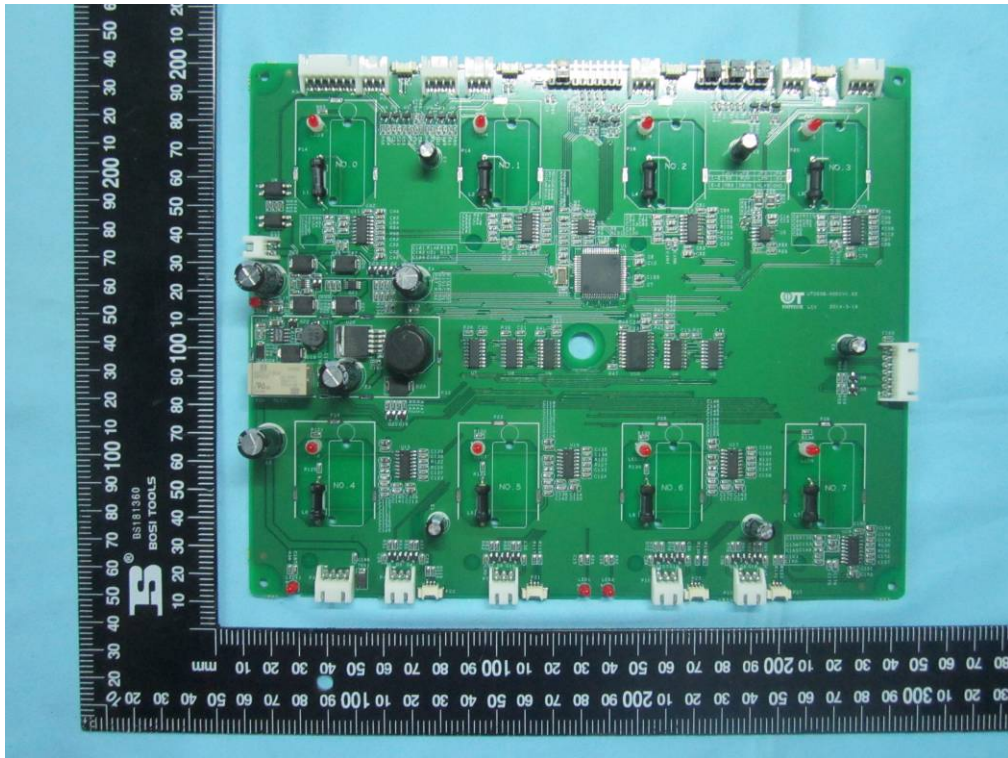
Report No.: 14020514-FCC-E1

Issue Date: July 01, 2014

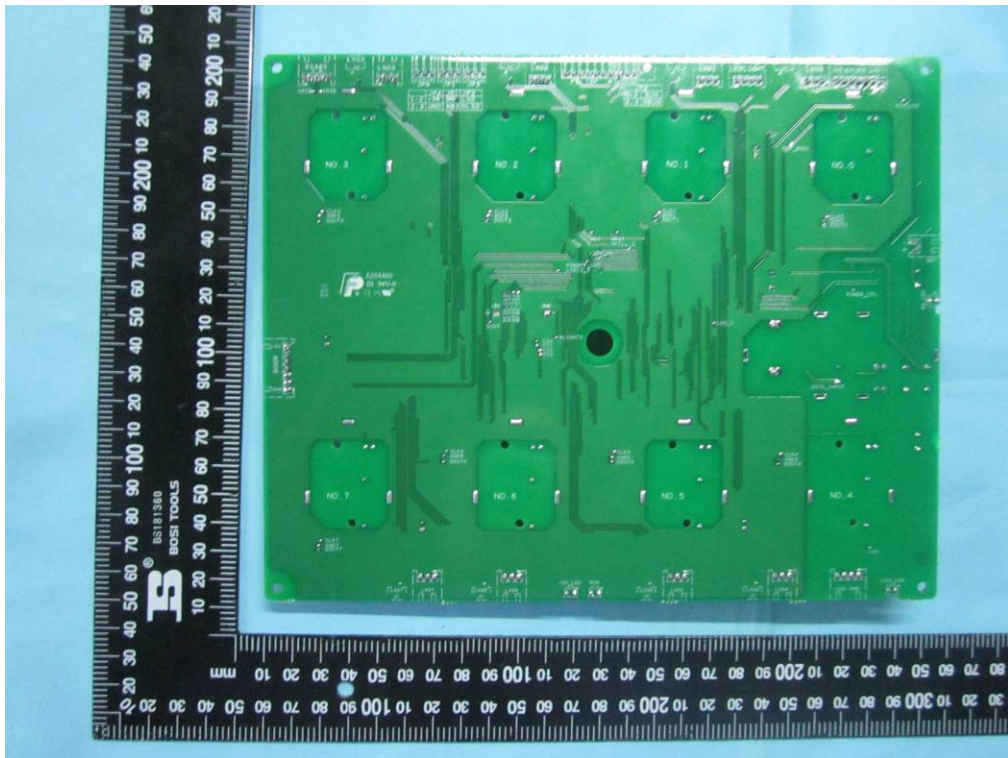
Page: 26 of 39

www.siemmic.com

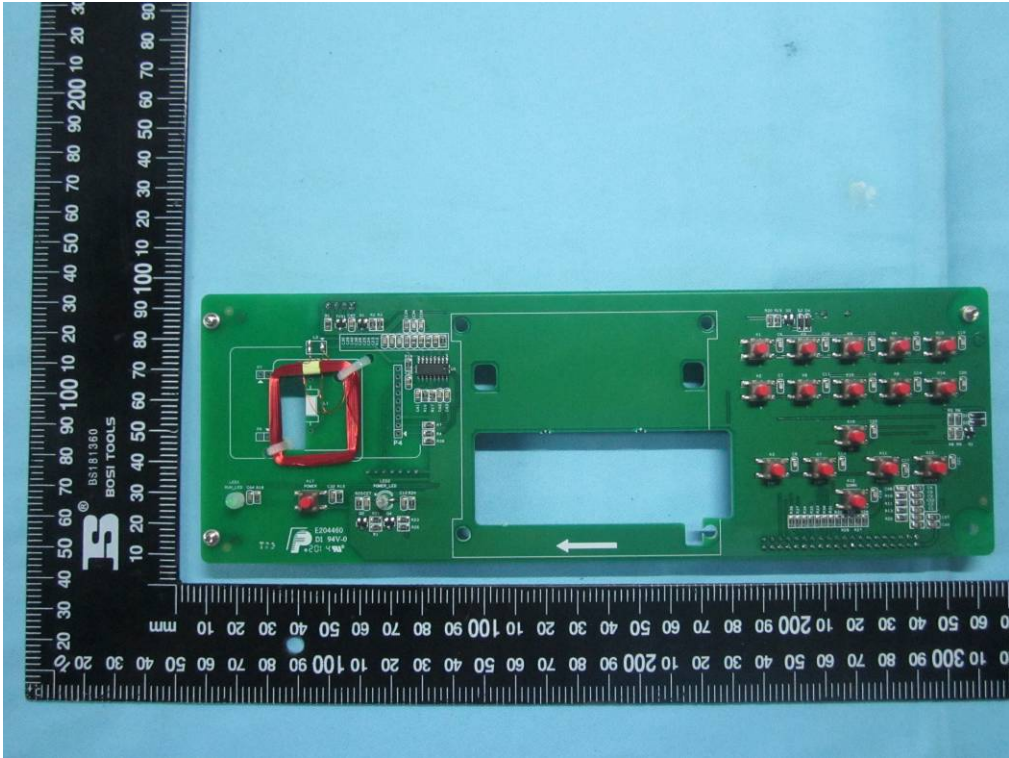
www.sinnmic.com.cn



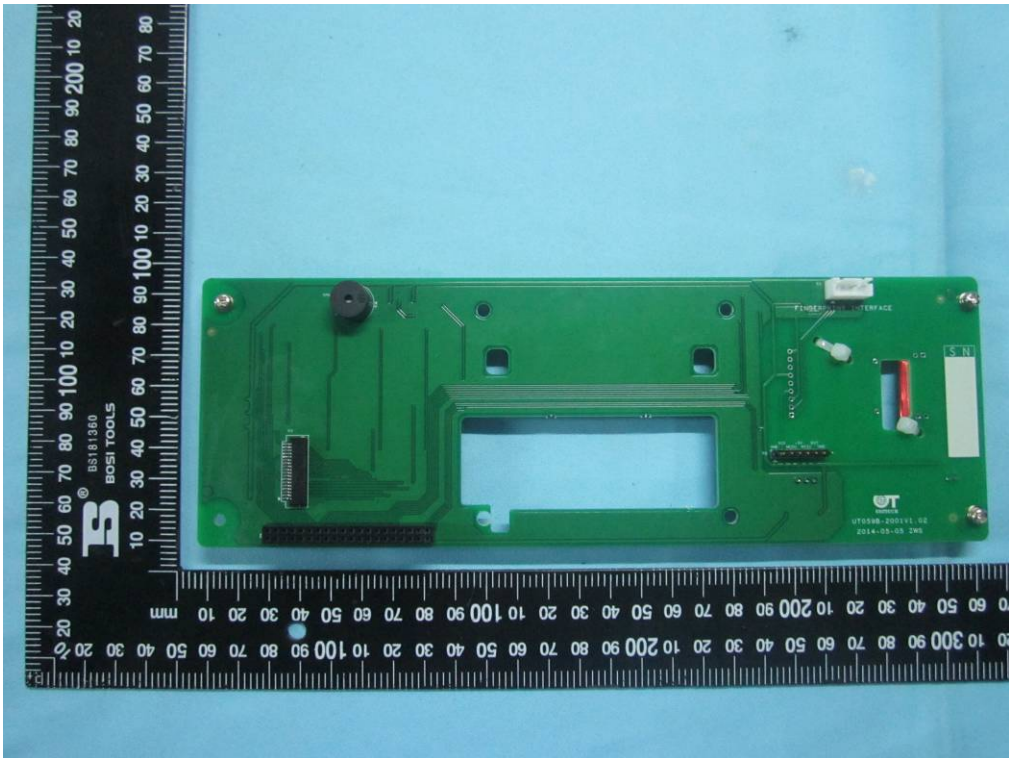
Mainboard - Front View



Mainboard - Rear View



Keyboard - Front View



Keyboard - Rear View



**SIEMIC, INC.**

Accessing global markets

Title: EMC Test Report for Key Management Cabinet

Main Model: UT-059B\_UL

Serial Model: N/A

To: FCC Part 15 Subpart B Class B: 2013 , ANSI C63.4:2009

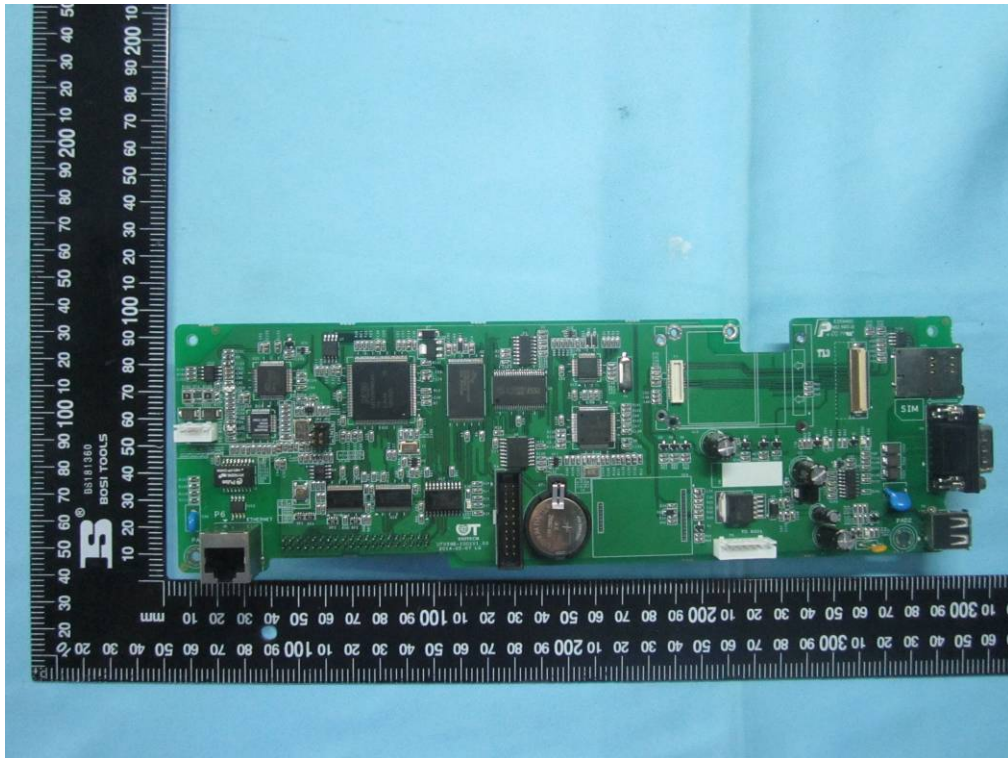
Report No.: 14020514-FCC-E1

Issue Date: July 01, 2014

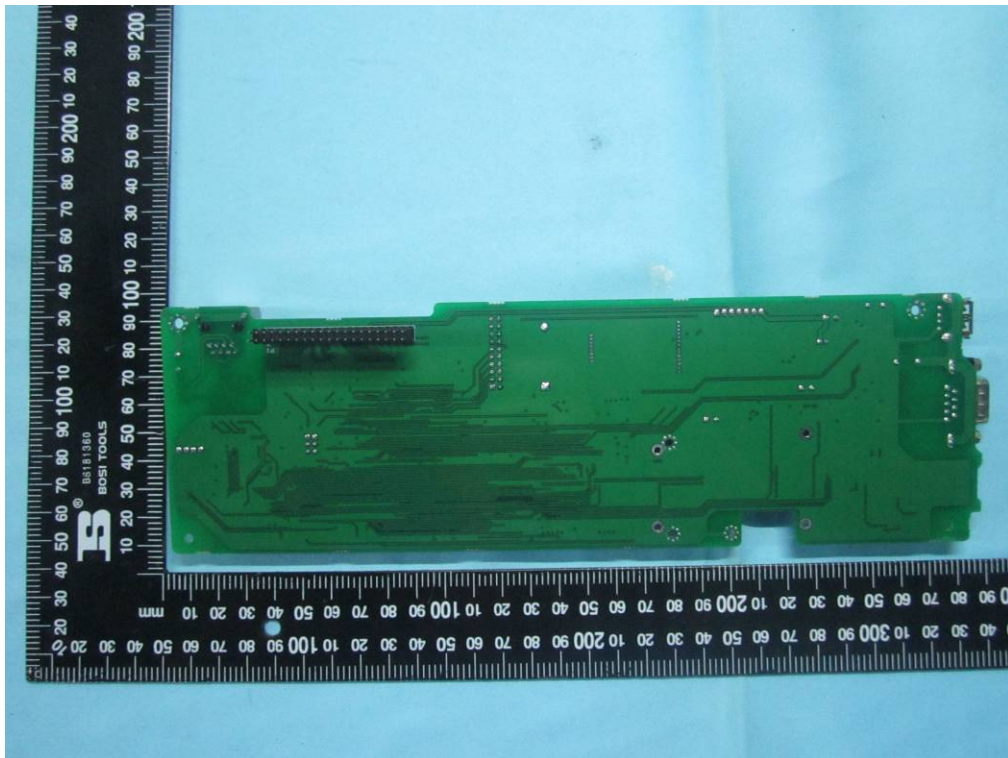
Page: 28 of 39

www.siemmic.com

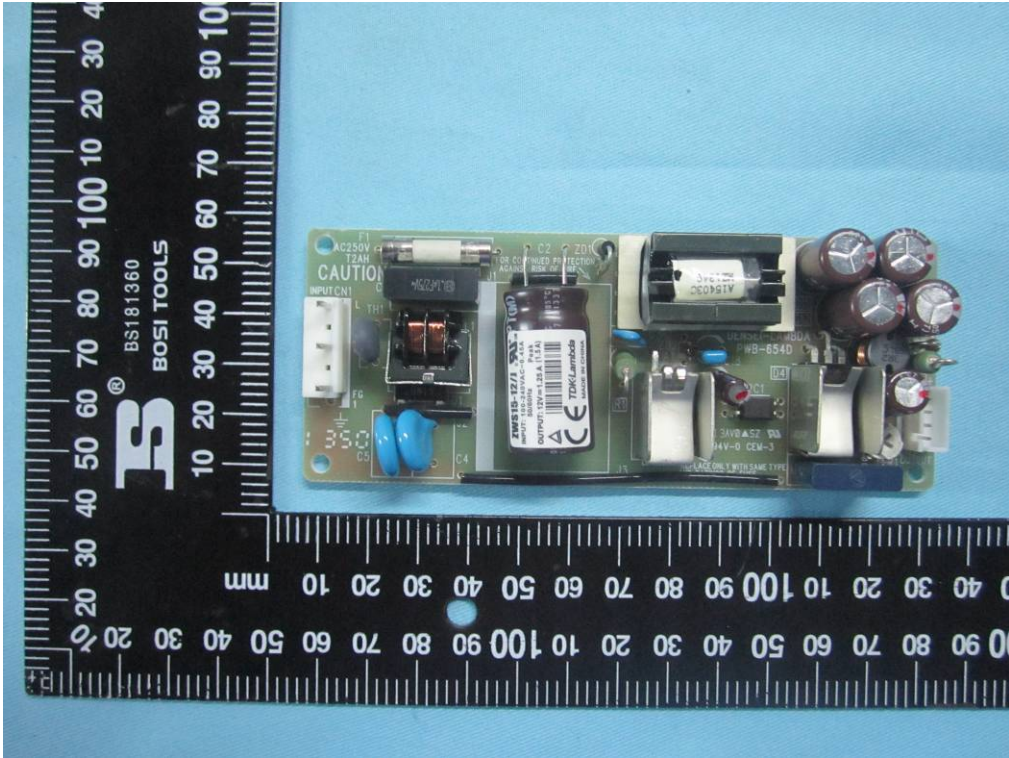
www.simmic.com.cn



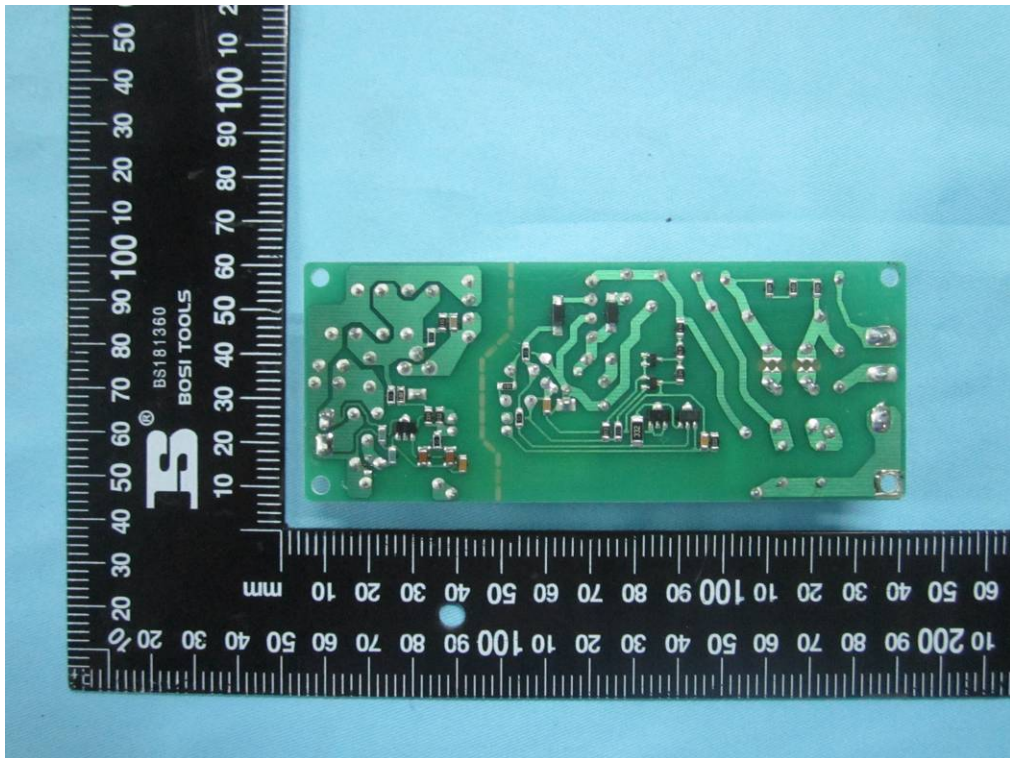
Connect board 1 - Front View



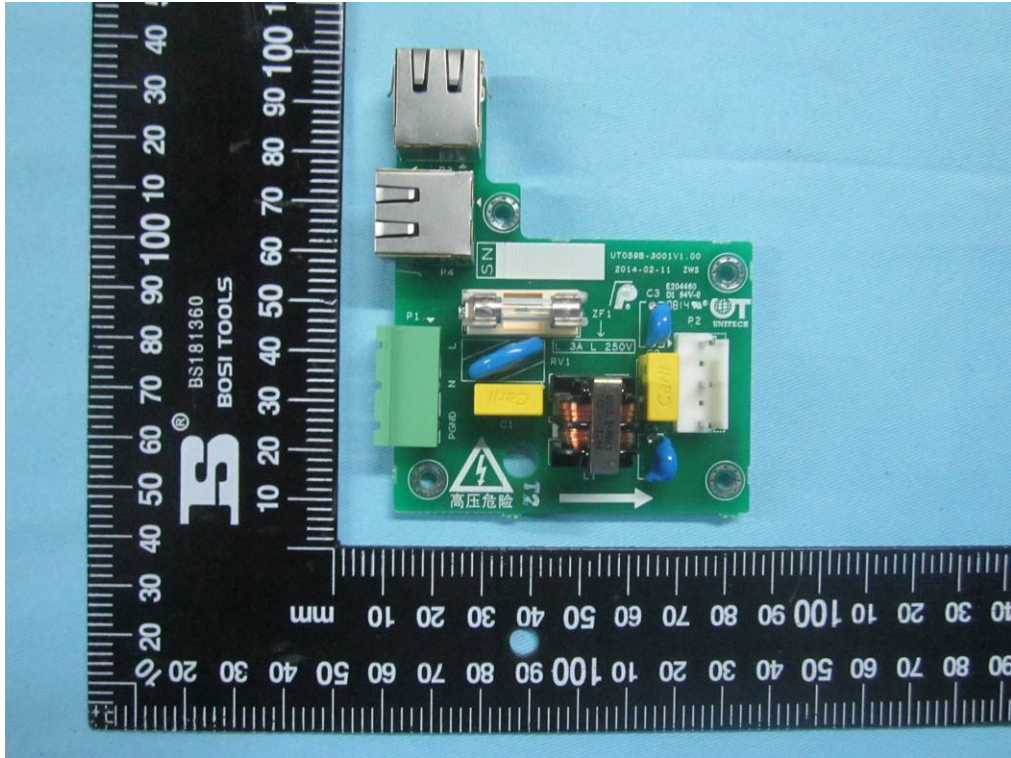
Connect board 1 - Rear View



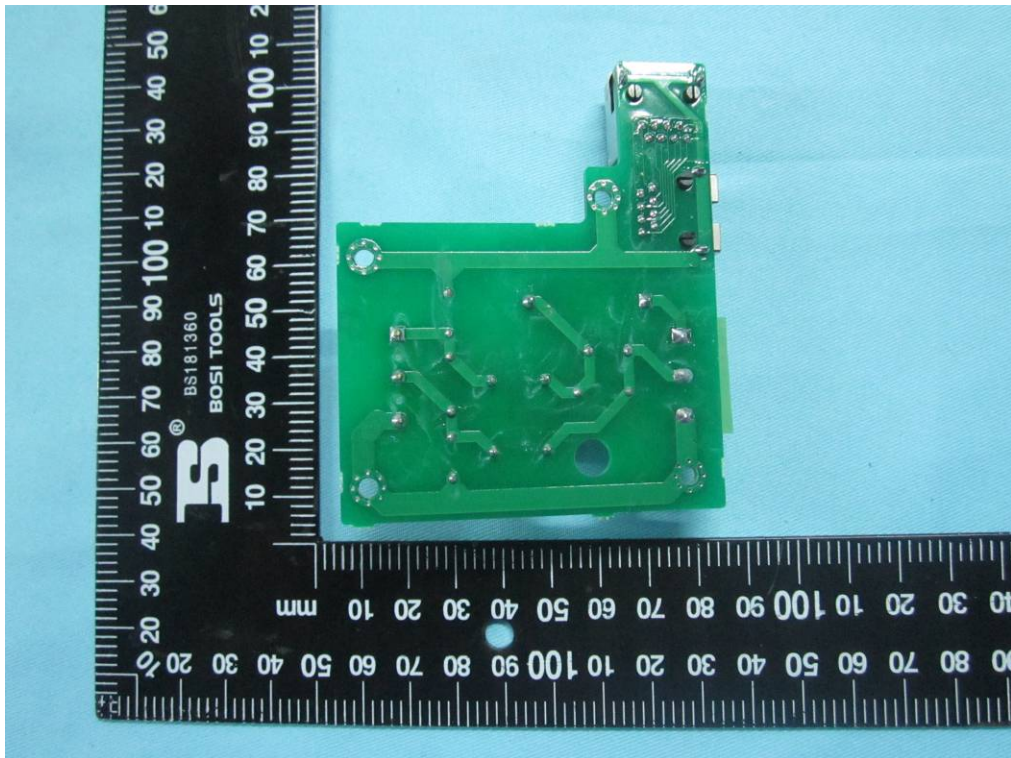
Connect board 2 - Front View



Connect board 2 - Rear View

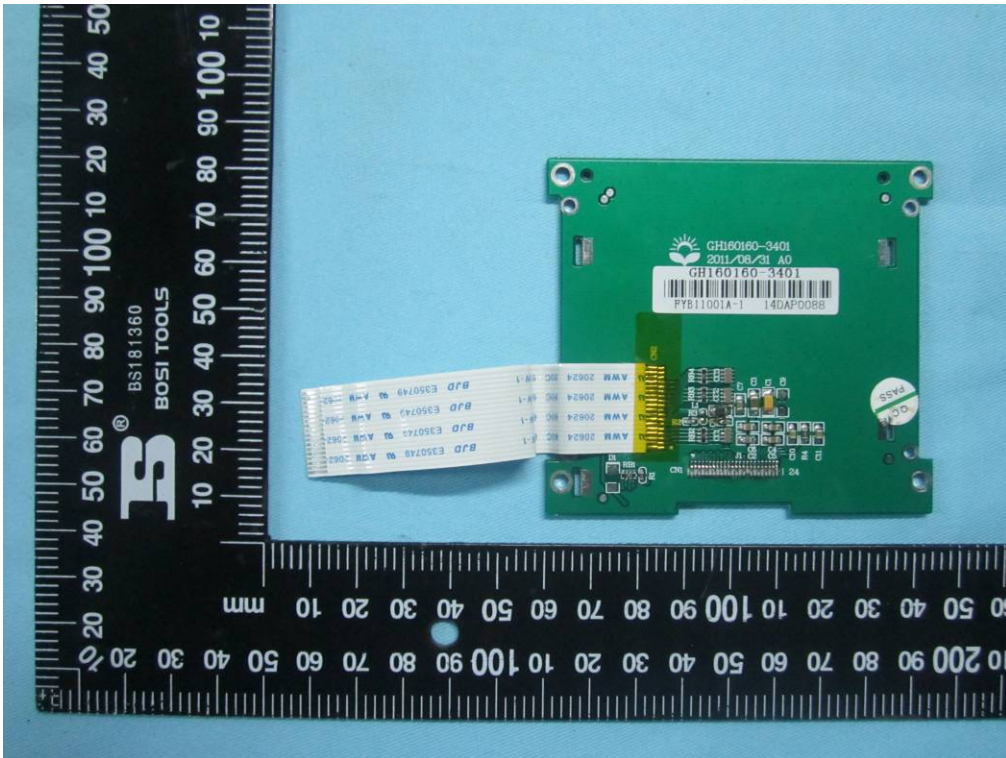


Connect board 3 - Front View

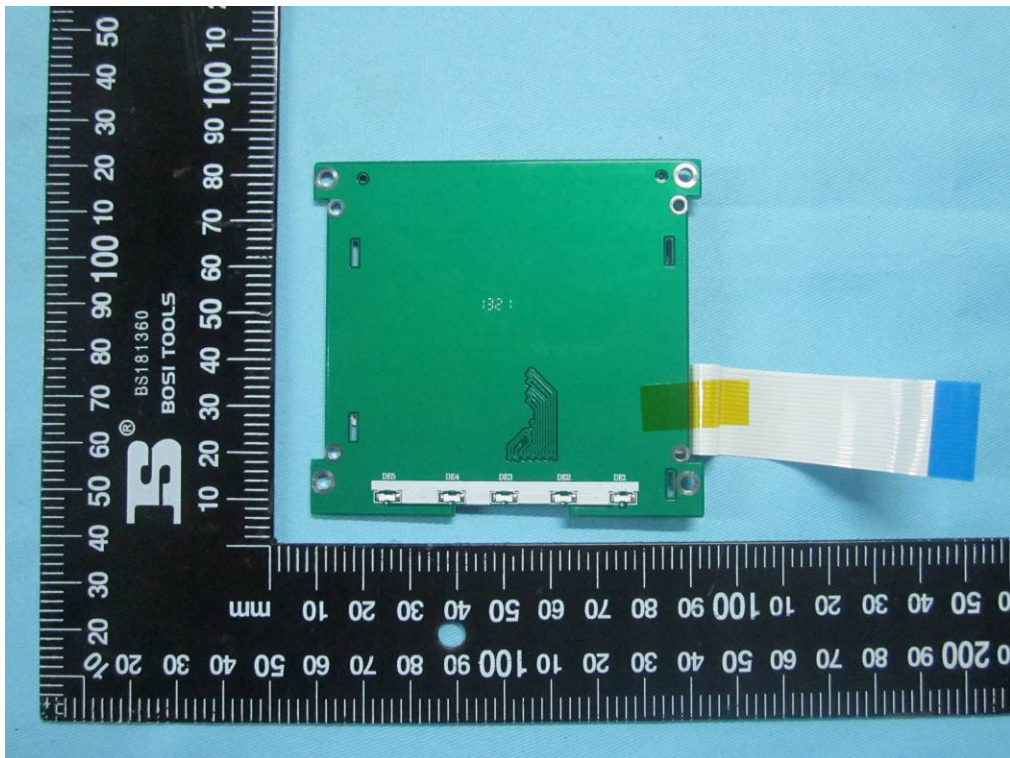


Connect board 3 - Rear View





Connect board 4 - Front View



Connect board 4 - Rear View