



## **STC Test Report**

Date : 2011-11-11

Page 1 of 19

No. : HM167158

**Applicant (SPS002):**

SPRINGFIELD SEASONAL LIMITED.  
Room 204, 2/FL., Houston Centre, 63 Mody Road,  
T.S.T.E, Kowloon, HK

**Manufacturer:**

Chenghai Hongdi Toys & Crafts Factory  
Zhongxing Rd., Chenghai District of Shantou City,  
Guangdong Province, China

**Description of Sample(s):**

Submitted samples(s) said to be  
Product: B/O., R/C., Boats  
Brand Name: N/A  
Model Number: 31419-B  
FCC ID: Z5631419B

**Date Sample(s) Received:**

2011-10-07, 2011-11-03

**Date Tested:**

2011-10-14 to 2011-11-07

**Investigation Requested:**


Perform ElectroMagnetic Interference measurement in accordance with FCC 47CFR [Codes of Federal Regulations] Part 15: 2010 and ANSI C63.4:2009 for FCC Certification.

**Conclusion(s):**

The submitted product COMPLIED with the requirements of Federal Communications Commission [FCC] Rules and Regulations Part 15. The tests were performed in accordance with the standards described above and on Section 2.2 in this Test Report.

**Remark(s):**

For additional models details, see page 4.

---

Dr. LEE Kam Chueh,

Authorized Signatory

ElectroMagnetic Compatibility Department

For and on behalf of

The Hong Kong Standards and Testing Centre Ltd.

**The Hong Kong Standards and Testing Centre Ltd.**

10 Dai Wang Street, Taipo Industrial Estate, N.T., Hong Kong

Tel: (852) 2666 1888 Fax: (852) 2664 4353 Homepage: [www.hkstdc.org](http://www.hkstdc.org) E-mail: [hkstdc@hkstdc.org](mailto:hkstdc@hkstdc.org)



## **STC Test Report**

Date : 2011-11-11

Page 2 of 19

No. : HM167158

### **CONTENT:**

Cover	Page 1 of 19
Content	Page 2-3 of 19
<b><u>1.0</u></b>	<b><u>General Details</u></b>
1.1 Test Laboratory	Page 4 of 19
1.2 Equipment Under Test [EUT] Description of Sample(s)	Page 4 of 19
1.3 Description of EUT operation	Page 4 of 19
1.4 Date of Order	Page 4 of 19
1.5 Submitted Sample(s)	Page 4 of 19
1.6 Test Duration	Page 4 of 19
1.7 Country of Origin	Page 4 of 19
<b><u>2.0</u></b>	<b><u>Technical Details</u></b>
2.1 Investigations Requested	Page 5 of 19
2.2 Test Standards and Results Summary	Page 5 of 19
<b><u>3.0</u></b>	<b><u>Test Results</u></b>
3.1 Emission	Page 6-10 of 19
3.2 Bandwidth Measurement	Page 11-13 of 19
3.3 Duty Cycle Correction During 100 msec	Page 14-16 of 19

### **The Hong Kong Standards and Testing Centre Ltd.**

10 Dai Wang Street, Taipo Industrial Estate, N.T., Hong Kong

Tel: (852) 2666 1888 Fax: (852) 2664 4353 Homepage: [www.hkstc.org](http://www.hkstc.org) E-mail: [hkstc@hkstc.org](mailto:hkstc@hkstc.org)

This report shall not be reproduced unless with prior written approval from The Hong Kong Standards and Testing Centre Ltd.  
For Conditions of Issuance of this test report, please refer to the overleaf or Homepage



## **STC Test Report**

Date : 2011-11-11

Page 3 of 19

No. : HM167158

### **Appendix A**

List of Measurement Equipment

Page 17 of 19

### **Appendix B**

Duty Cycle Correction During 100 msec

Page 18-19 of 19

**The Hong Kong Standards and Testing Centre Ltd.**

10 Dai Wang Street, Taipo Industrial Estate, N.T., Hong Kong

Tel: (852) 2666 1888 Fax: (852) 2664 4353 Homepage: [www.hkstc.org](http://www.hkstc.org) E-mail: [hkstc@hkstc.org](mailto:hkstc@hkstc.org)

This report shall not be reproduced unless with prior written approval from The Hong Kong Standards and Testing Centre Ltd.  
For Conditions of Issuance of this test report, please refer to the overleaf or Homepage



## **STC Test Report**

Date : 2011-11-11

Page 4 of 19

No. : HM167158

### **1.0 General Details**

#### **1.1 Test Laboratory**

The Hong Kong Standards and Testing Centre Ltd.  
EMC Laboratory  
10 Dai Wang Street, Taipo Industrial Estate  
New Territories, Hong Kong

Telephone: 852 2666 1888  
Fax: 852 2664 4353

#### **1.2 Equipment Under Test [EUT]**

##### **Description of Sample(s)**

Submitted sample(s) said to be

Product: B/O., R/C., Boats

Manufacturer: Chenghai Hongdi Toys & Crafts Factory  
Zhongxing Rd., Chenghai District of Shantou City, Guangdong  
Province, China

Brand Name: N/A

Model Number: 31419-B

Additional Model Number(s): 26A-4 , 26A-3 , 26A-5 , 26A-7 , 26A-10

Input Voltage: 6Vd.c. ("AA" size battery x 4)

#### **1.3 Description of EUT Operation**

The Equipment Under Test (EUT) is SPRINGFIELD SEASONAL LIMITED., B/O., R/C., Boats. The EUT is a transmitter of radio control toy. The transmitter was operating with 2 buttons, the EUT continues to transmit while button is being on, It is pulse transmitter, Modulation by IC, and type is pulse modulation.

#### **1.4 Date of Order**

2011-10-07, 2011-11-03

#### **1.5 Submitted Sample(s):**

2 samples

#### **1.6 Test Duration**

2011-10-14 to 2011-11-07

#### **1.7 Country of Origin**

China

**The Hong Kong Standards and Testing Centre Ltd.**

10 Dai Wang Street, Taipo Industrial Estate, N.T., Hong Kong

Tel: (852) 2666 1888 Fax: (852) 2664 4353 Homepage: [www.hkstc.org](http://www.hkstc.org) E-mail: [hkstc@hkstc.org](mailto:hkstc@hkstc.org)

This report shall not be reproduced unless with prior written approval from The Hong Kong Standards and Testing Centre Ltd.  
For Conditions of Issuance of this test report, please refer to the overleaf or Homepage



## **STC Test Report**

Date : 2011-11-11

Page 5 of 19

No. : HM167158

### **2.0 Technical Details**

#### **2.1 Investigations Requested**

Perform ElectroMagnetic Interference measurement in accordance with FCC 47CFR [Codes of Federal Regulations] Part 15: 2010 and ANSI C63.4:2009 for FCC Certification.

#### **2.2 Test Standards and Results Summary Tables**

<b>EMISSION Results Summary</b>					
Test Condition	Test Requirement	Test Method	Class / Severity	Test Result	
				Pass	Failed
Field Strength of Fundamental Emissions & Spurious Emissions	FCC 47CFR 15.235	ANSI C63.4:2009	N/A	<input checked="" type="checkbox"/>	<input type="checkbox"/>
Radiated Emissions, 30MHz to 1GHz	FCC 47CFR 15.209	ANSI C63.4:2009	N/A	<input checked="" type="checkbox"/>	<input type="checkbox"/>

Note: N/A - Not Applicable

**The Hong Kong Standards and Testing Centre Ltd.**

10 Dai Wang Street, Taipo Industrial Estate, N.T., Hong Kong

Tel: (852) 2666 1888 Fax: (852) 2664 4353 Homepage: [www.hkstc.org](http://www.hkstc.org) E-mail: [hkstc@hkstc.org](mailto:hkstc@hkstc.org)

This report shall not be reproduced unless with prior written approval from The Hong Kong Standards and Testing Centre Ltd.  
For Conditions of Issuance of this test report, please refer to the overleaf or Homepage



## **STC Test Report**

Date : 2011-11-11

Page 6 of 19

No. : HM167158

### **3.0 Test Results**

#### **3.1 Emission**

##### **3.1.1 Radiated Emissions (30 – 1000MHz)**

Test Requirement:	FCC 47CFR 15.235
Test Method:	ANSI C63.4:2009
Test Date:	2011-07-08
Mode of Operation:	Tx mode

#### **Test Method:**

The sample was placed 0.8m above the ground plane on a standard radiated emission test site. Measurements in both horizontal and vertical polarities were performed. During the test, each emission was maximized by: having the EUT continuously working, investigated all operating modes, rotated about all 3 axis (X, Y & Z) and considered typical configuration to obtain worst position, manipulating interconnecting cables, rotating turntable, varying antenna height from 1m to 4m in both horizontal and vertical polarizations. In the frequency range of 9kHz to 30MHz, The center of the loop antenna shall be 1 meter above the ground and rotated loop axis for maximum reading. The emissions worst-case are shown in Test Results of the following pages.

Remark: 3 orthogonal axis apply to hand-held device only.

\*: Semi-anechoic chamber located on the G/F of The Hong Kong Standards and Testing Centre Ltd. with a metal ground plane filed with the FCC pursuant to section 2.948 of the FCC rules, with Registration Number: 607756.

**The Hong Kong Standards and Testing Centre Ltd.**

10 Dai Wang Street, Taipo Industrial Estate, N.T., Hong Kong

Tel: (852) 2666 1888 Fax: (852) 2664 4353 Homepage: [www.hkstc.org](http://www.hkstc.org) E-mail: [hkstc@hkstc.org](mailto:hkstc@hkstc.org)

This report shall not be reproduced unless with prior written approval from The Hong Kong Standards and Testing Centre Ltd.  
For Conditions of Issuance of this test report, please refer to the overleaf or Homepage



## STC Test Report

Date : 2011-11-11

Page 7 of 19

No. : HM167158

### **Spectrum Analyzer Setting:**

9KHz – 30MHz (Pk & Av)

RBW: 10kHz  
VBW: 30kHz  
Sweep: Auto  
Span: Fully capture the emissions being measured  
Trace: Max. hold

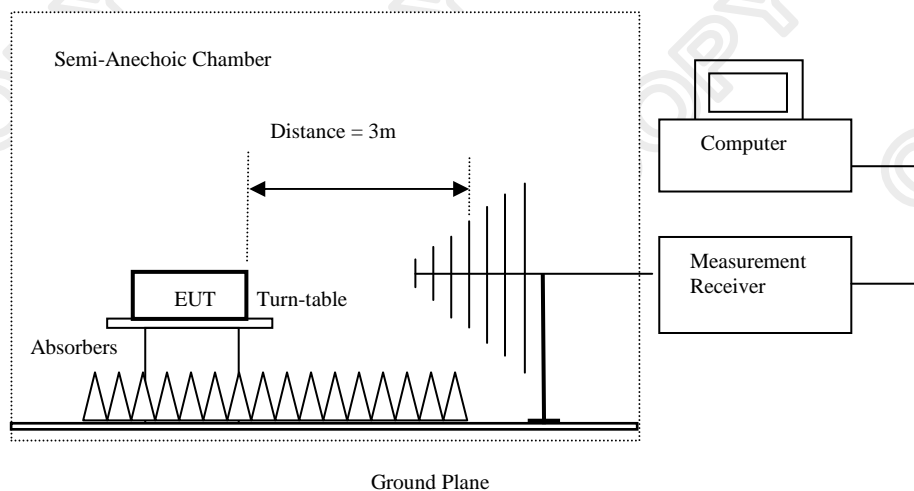
30MHz – 1GHz (QP)

RBW: 120kHz  
VBW: 120kHz  
Sweep: Auto  
Span: Fully capture the emissions being measured  
Trace: Max. hold

Above 1GHz (Pk & Av)

RBW: 3MHz  
VBW: 3MHz  
Sweep: Auto  
Span: Fully capture the emissions being measured  
Trace: Max. hold

### **Test Setup:**



Absorbers placed on top of the ground plane are for measurements above 1000MHz only.

### **The Hong Kong Standards and Testing Centre Ltd.**

10 Dai Wang Street, Taipo Industrial Estate, N.T., Hong Kong

Tel: (852) 2666 1888 Fax: (852) 2664 4353 Homepage: [www.hkstc.org](http://www.hkstc.org) E-mail: [hkstc@hkstc.org](mailto:hkstc@hkstc.org)

This report shall not be reproduced unless with prior written approval from The Hong Kong Standards and Testing Centre Ltd.  
For Conditions of Issuance of this test report, please refer to the overleaf or Homepage



## **STC Test Report**

Date : 2011-11-11

Page 8 of 19

No. : HM167158

### **Limits for Field Strength of Fundamental Emissions [FCC 47CFR 15.235]:**

Frequency Range of Fundamental [MHz]	Field Strength of Fundamental Emission [Peak] [ $\mu\text{V/m}$ ]	Field Strength of Fundamental Emission [Average] [ $\mu\text{V/m}$ ]
49.82-49.90	100,000	10,000

**Results of Tx mode: PASS**

Field Strength of Fundamental Emissions Peak Value						
Frequency MHz	Measured Level @3m dB $\mu\text{V}$	Correction Factor dB/m	Field Strength dB $\mu\text{V/m}$	Field Strength $\mu\text{V/m}$	Limit @3m $\mu\text{V/m}$	E-Field Polarity
49.86	44.1	9.4	53.5	473.2	100,000	Vertical

Field Strength of Fundamental Emissions Average Value							
Frequency MHz	Measured Level @3m dB $\mu\text{V}$	Adjusted by Duty Cycle dB	Correction Factor dB/m	Field Strength dB $\mu\text{V/m}$	Field Strength $\mu\text{V/m}$	Limit @3m $\mu\text{V/m}$	E-Field Polarity
49.86	38.9	-5.6	9.4	48.3	260.0	10,000	Vertical

According to FCC 47CFR15.35, the limit on the radio frequency emissions as measured using instrumentation with a peak detector function, corresponding to 20dB above the maximum permitted average limit for the frequency being investigated unless a different peak emission limit is otherwise specified in the rules.

Remarks:

Correction Factor includes Antenna Factor and Cable Attenuation.

Calculated measurement uncertainty : 30MHz to 1GHz 5.1dB

**The Hong Kong Standards and Testing Centre Ltd.**

10 Dai Wang Street, Taipo Industrial Estate, N.T., Hong Kong

Tel: (852) 2666 1888 Fax: (852) 2664 4353 Homepage: [www.hkstc.org](http://www.hkstc.org) E-mail: [hkstc@hkstc.org](mailto:hkstc@hkstc.org)

This report shall not be reproduced unless with prior written approval from The Hong Kong Standards and Testing Centre Ltd.  
For Conditions of Issuance of this test report, please refer to the overleaf or Homepage





## STC Test Report

Date : 2011-11-11

Page 9 of 19

No. : HM167158

### Limits for Radiated Emissions [FCC 47 CFR 15.209]:

Frequency Range [MHz]	Field strength [microvolts/meter]	Measurement distance [meters]
0.009-0.490	2400/F(kHz)	300
0.490-1.705	24000/F(kHz)	30
1.705-30	30	30
30-88	100	3
88-216	150	3
216-960	200	3
Above960	500	3

The emission limits shown in the above table are based on measurement employing a CISPR quasi-peak detector and above 1000MHz are based on measurements employing an average detector.

### Results of Tx on mode (9k – 30MHz): PASS

Field Strength of Spurious Emissions Average Value						
Frequency MHz	Measured Level dBμV	Correction Factor dB/m	Field Strength dBμV/m	Field Strength μV/m	Limit μV/m	E-Field Polarity
Emissions detected are more than 20 dB below the FCC Limits						

### Results of Tx on mode (30MHz – 1000MHz): PASS

Radiated Emissions Quasi-Peak Value						
Frequency MHz	Measured Level @3m dBμV	Correction Factor dB/m	Field Strength dBμV/m	Field Strength μV/m	Limit @3m μV/m	E-Field Polarity
99.72	14.6	9.2	23.8	15.5	150	Vertical
149.58	15.6	9.4	25.0	17.8	150	Vertical
199.44	20.4	11.7	32.1	40.3	150	Vertical
249.32	31.3	13.9	45.2	182.0	200	Vertical
299.16	17.4	15.4	32.8	43.7	200	Vertical
349.04	16.8	16.7	33.5	47.3	200	Vertical
398.92	6.5	17.2	23.7	15.3	200	Vertical
448.74	< 1.0	21.1	< 22.1	< 12.7	200	Vertical
498.60	< 1.0	20.6	< 21.6	< 12.0	200	Vertical

**The Hong Kong Standards and Testing Centre Ltd.**

10 Dai Wang Street, Taipo Industrial Estate, N.T., Hong Kong

Tel: (852) 2666 1888 Fax: (852) 2664 4353 Homepage: [www.hkstc.org](http://www.hkstc.org) E-mail: [hkstc@hkstc.org](mailto:hkstc@hkstc.org)

This report shall not be reproduced unless with prior written approval from The Hong Kong Standards and Testing Centre Ltd.  
For Conditions of Issuance of this test report, please refer to the overleaf or Homepage



## STC Test Report

Date : 2011-11-11

Page 10 of 19

No. : HM167158

### Results of Tx on mode (Above 1000MHz): PASS

Field Strength of Spurious Emissions Peak Value						
Frequency MHz	Measured Level dB $\mu$ V	Correction Factor dB/m	Field Strength dB $\mu$ V/m	Field Strength $\mu$ V/m	Limit $\mu$ V/m	E-Field Polarity
Emissions detected are more than 20 dB below the FCC Limits						

### Results of Tx on mode (Above 1000MHz): PASS

Field Strength of Spurious Emissions Average Value						
Frequency MHz	Measured Level dB $\mu$ V	Correction Factor dB/m	Field Strength dB $\mu$ V/m	Field Strength $\mu$ V/m	Limit $\mu$ V/m	E-Field Polarity
Emissions detected are more than 20 dB below the FCC Limits						

#### Remarks:

Correction Factor includes Antenna Factor and Cable Attenuation.

Calculated measurement uncertainty : 30MHz to 1GHz 5.1dB

**The Hong Kong Standards and Testing Centre Ltd.**

10 Dai Wang Street, Taipo Industrial Estate, N.T., Hong Kong

Tel: (852) 2666 1888 Fax: (852) 2664 4353 Homepage: [www.hkstc.org](http://www.hkstc.org) E-mail: [hkstc@hkstc.org](mailto:hkstc@hkstc.org)

This report shall not be reproduced unless with prior written approval from The Hong Kong Standards and Testing Centre Ltd.  
For Conditions of Issuance of this test report, please refer to the overleaf or Homepage



## **STC Test Report**

Date : 2011-11-11

Page 11 of 19

No. : HM167158

### **3.2 20dB Bandwidth of Fundamental Emission**

Test Requirement:	FCC 47 CFR 15.235
Test Method:	ANSI C63.4:2009
Test Date:	2011-11-10
Mode of Operation:	Tx mode

#### **Test Method:**

The bandwidth is measured at an amplitude level reduced from the reference level by a specified ratio. The reference level is the level of the highest amplitude signal observed from the transmitter at the fundamental frequency. Once the reference level is established, the equipment is conditioned with typical modulating signal to produce the worst-case (i.e. the widest) bandwidth.

#### **Test Setup:**

As Test Setup of clause 3.1.1 in this test report.

**The Hong Kong Standards and Testing Centre Ltd.**

10 Dai Wang Street, Taipo Industrial Estate, N.T., Hong Kong

Tel: (852) 2666 1888 Fax: (852) 2664 4353 Homepage: [www.hkstc.org](http://www.hkstc.org) E-mail: [hkstc@hkstc.org](mailto:hkstc@hkstc.org)

This report shall not be reproduced unless with prior written approval from The Hong Kong Standards and Testing Centre Ltd.  
For Conditions of Issuance of this test report, please refer to the overleaf or Homepage



## STC Test Report

Date : 2011-11-11

Page 12 of 19

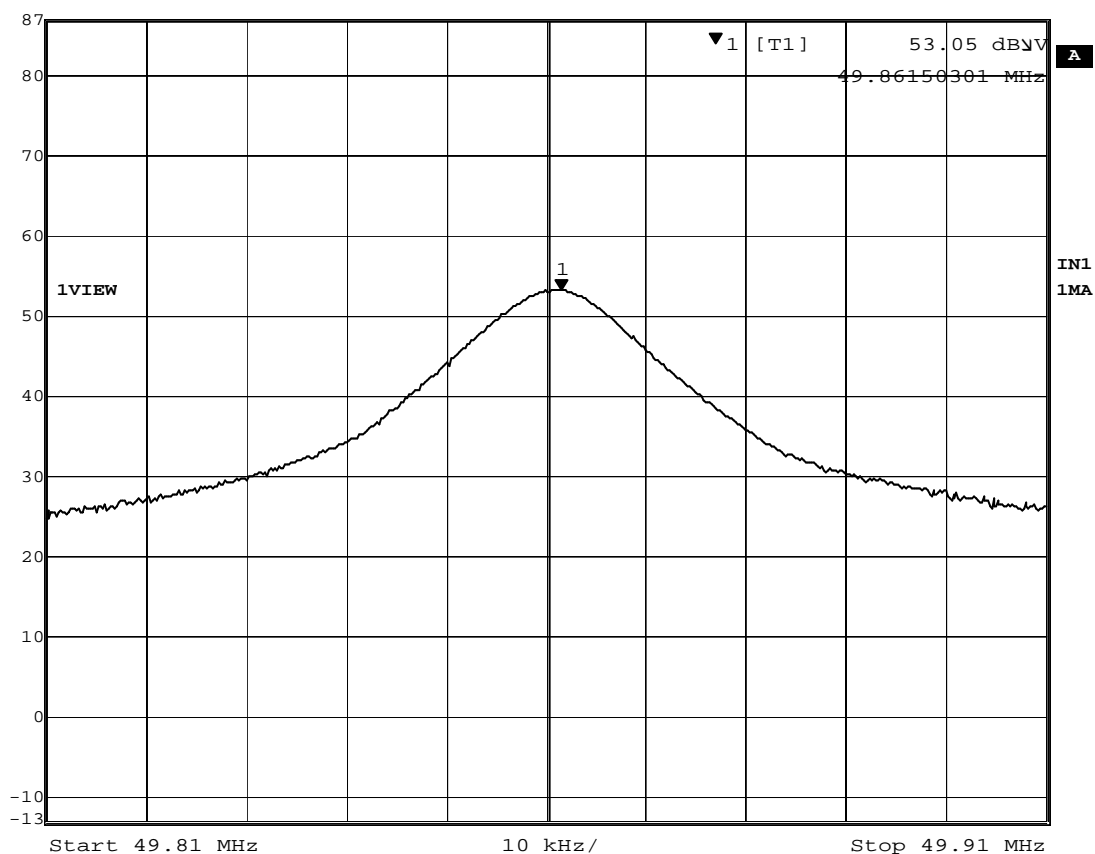
No. : HM167158

### Limits for 20dB Bandwidth of Fundamental Emission:

Frequency Range [MHz]	20dB Bandwidth [kHz]
49.86	45.49

### 20dB Bandwidth of Fundamental Emission

Ref Lvl	Marker 1 [T1]	RBW	10 kHz	RF Att	10 dB
87 dBμV	53.05 dBμV	VBW	10 kHz		
	49.86150301 MHz	SWT	50 ms	Unit	dBμV



Date: 10.NOV.2011 21:04:34

**The Hong Kong Standards and Testing Centre Ltd.**

10 Dai Wang Street, Taipo Industrial Estate, N.T., Hong Kong

Tel: (852) 2666 1888 Fax: (852) 2664 4353 Homepage: [www.hkstc.org](http://www.hkstc.org) E-mail: [hkstc@hkstc.org](mailto:hkstc@hkstc.org)

This report shall not be reproduced unless with prior written approval from The Hong Kong Standards and Testing Centre Ltd.  
For Conditions of Issuance of this test report, please refer to the overleaf or Homepage

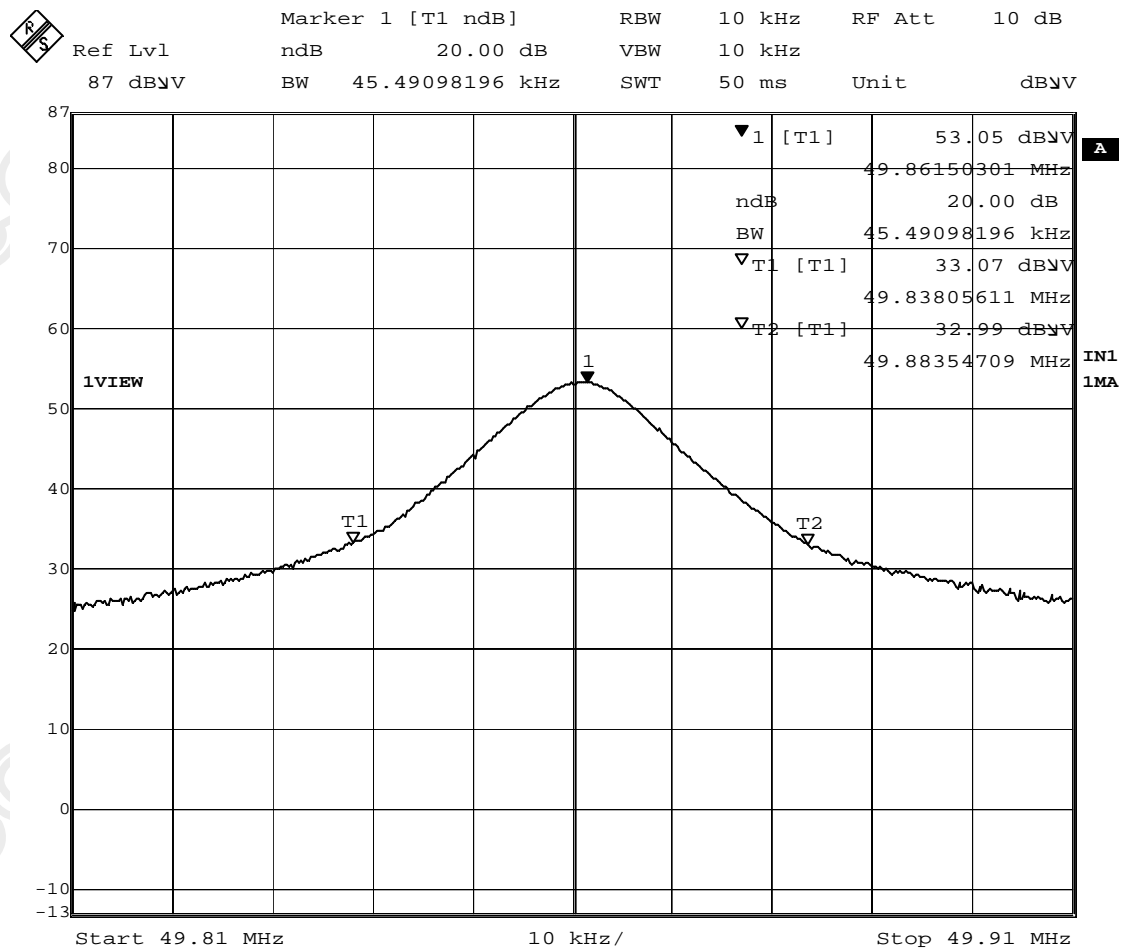


## STC Test Report

Date : 2011-11-11

Page 13 of 19

No. : HM167158



Date: 10.NOV.2011 21:05:21

**The Hong Kong Standards and Testing Centre Ltd.**

10 Dai Wang Street, Taipo Industrial Estate, N.T., Hong Kong

Tel: (852) 2666 1888 Fax: (852) 2664 4353 Homepage: [www.hkstc.org](http://www.hkstc.org) E-mail: [hkstc@hkstc.org](mailto:hkstc@hkstc.org)

This report shall not be reproduced unless with prior written approval from The Hong Kong Standards and Testing Centre Ltd.  
For Conditions of Issuance of this test report, please refer to the overleaf or Homepage



## STC Test Report

Date : 2011-11-11

Page 14 of 19

No. : HM167158

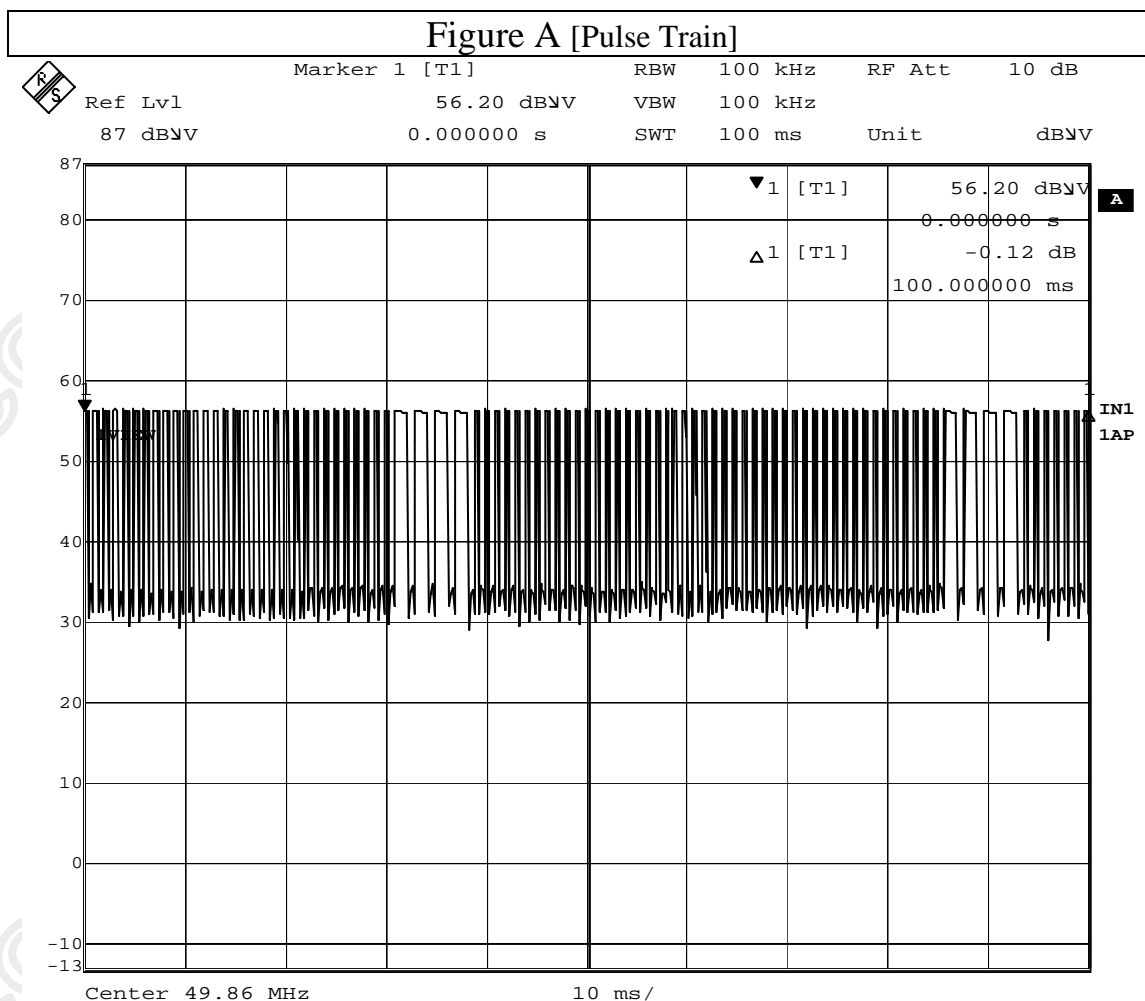
### 3.3 Duty Cycle Correction During 100msec

Each function key sends a different series of characters, but each packet period 100msec never exceeds a series of 8 long (1.48msec) and 85 short (0.481msec) pulses. Assuming any combination of short and long pulses may be obtained due to encoding the worst case transmit duty cycle would be considered  $(8 \times 1.48) + (85 \times 0.481)$  msec per 100msec 52.72% duty cycle. Figure A through C show the characteristics of the pulse train for one of these functions.

Remarks:

Duty Cycle Correction =  $20\text{Log}(0.5272) = -5.6\text{dB}$

The following figures [Figure A to Figure C] show the characteristics of the pulse train for one of these functions.



Date: 10.NOV.2011 21:14:32

**The Hong Kong Standards and Testing Centre Ltd.**

10 Dai Wang Street, Taipo Industrial Estate, N.T., Hong Kong

Tel: (852) 2666 1888 Fax: (852) 2664 4353 Homepage: [www.hkstc.org](http://www.hkstc.org) E-mail: [hkstc@hkstc.org](mailto:hkstc@hkstc.org)

This report shall not be reproduced unless with prior written approval from The Hong Kong Standards and Testing Centre Ltd.  
For Conditions of Issuance of this test report, please refer to the overleaf or Homepage



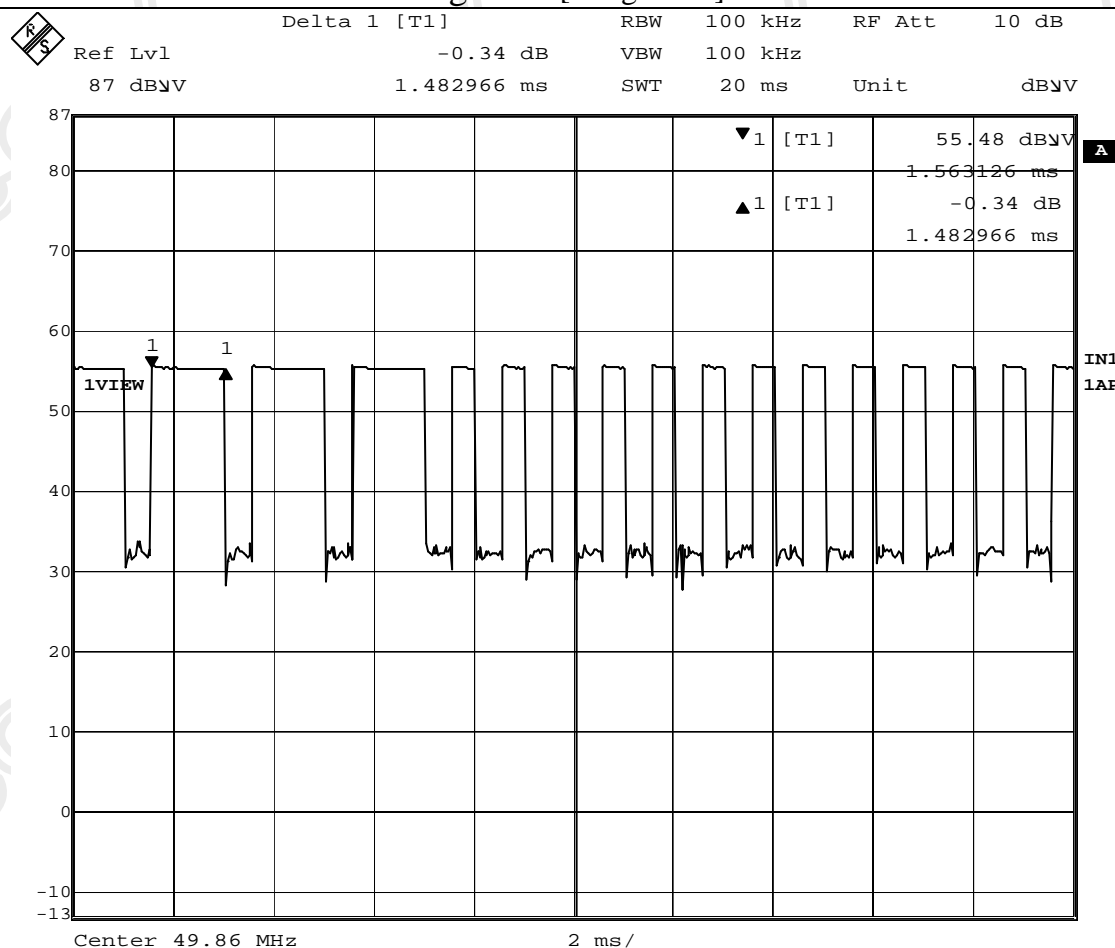
## STC Test Report

Date : 2011-11-11

Page 15 of 19

No. : HM167158

Figure B [Long Pulse]



Date: 10.NOV.2011 21:10:21

**The Hong Kong Standards and Testing Centre Ltd.**

10 Dai Wang Street, Taipo Industrial Estate, N.T., Hong Kong

Tel: (852) 2666 1888 Fax: (852) 2664 4353 Homepage: [www.hkstc.org](http://www.hkstc.org) E-mail: [hkstc@hkstc.org](mailto:hkstc@hkstc.org)

This report shall not be reproduced unless with prior written approval from The Hong Kong Standards and Testing Centre Ltd.  
For Conditions of Issuance of this test report, please refer to the overleaf or Homepage



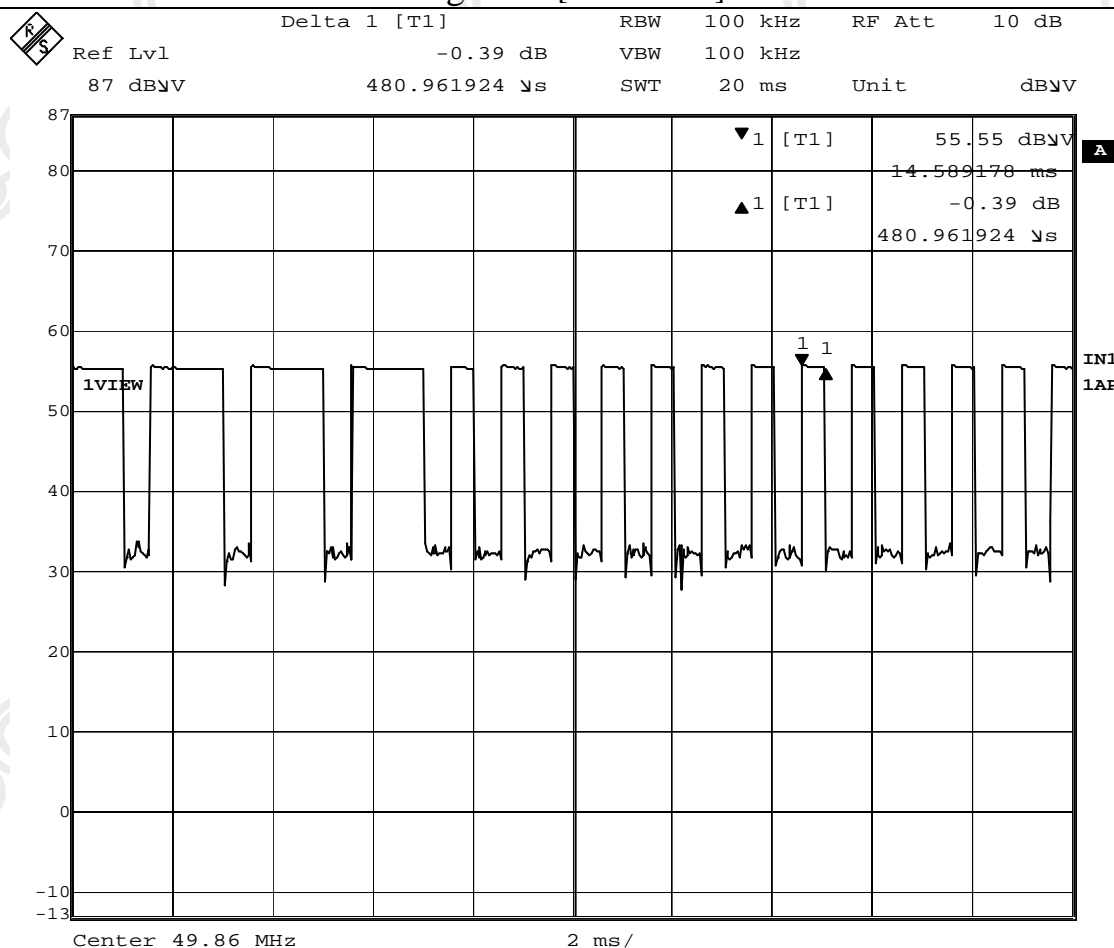
## STC Test Report

Date : 2011-11-11

Page 16 of 19

No. : HM167158

Figure C [Short Pulse]



Date: 10.NOV.2011 21:12:09

The Hong Kong Standards and Testing Centre Ltd.

10 Dai Wang Street, Taipo Industrial Estate, N.T., Hong Kong

Tel: (852) 2666 1888 Fax: (852) 2664 4353 Homepage: www.hkstc.org E-mail: hkstc@hkstc.org

This report shall not be reproduced unless with prior written approval from The Hong Kong Standards and Testing Centre Ltd.  
For Conditions of Issuance of this test report, please refer to the overleaf or Homepage





## **STC Test Report**

Date : 2011-11-11

Page 17 of 19

No. : HM167158

### **Appendix A**

#### **List of Measurement Equipment**

##### **Radiated Emission**

EQP NO.	DESCRIPTION	MANUFACTURER	MODEL NO.	SERIAL NO.	LAST CAL	DUE CAL
EM276	Broadband Horn Antenna	A-INFOMW	JXTXLB-10180-SF	J2031090903007	2010/08/21	2013/08/21
EM215	MULTIDEVICE CONTROLLER	EMCO	2090	00024676	N/A	N/A
EM216	MINI MAST SYSTEM	EMCO	2075	00026842	N/A	N/A
EM217	ELECTRIC POWERED TURNTABLE	EMCO	2088	00029144	N/A	N/A
EM218	ANECHOIC CHAMBER	ETS-Linggren	FACT-3	--	2011/10/25	2012/10/25
EM174	BICONILOG ANTENNA	EMCO	3142B	1671	2010/02/09	2012/02/09
EM229	EMI Test Receiver	R&S	ESIB40	100248	2011/04/26	2012/04/26
EM022	LOOP ANTENNA	EMCO	6502	1189-2424	2010/09/07	2012/09/07

#### **Remarks:-**

CM Corrective Maintenance

N/A Not Applicable

TBD To Be Determined

**The Hong Kong Standards and Testing Centre Ltd.**

10 Dai Wang Street, Taipo Industrial Estate, N.T., Hong Kong

Tel: (852) 2666 1888 Fax: (852) 2664 4353 Homepage: [www.hkstc.org](http://www.hkstc.org) E-mail: [hkstc@hkstc.org](mailto:hkstc@hkstc.org)

This report shall not be reproduced unless with prior written approval from The Hong Kong Standards and Testing Centre Ltd.  
For Conditions of Issuance of this test report, please refer to the overleaf or Homepage



## **STC Test Report**

Date : 2011-11-11

Page 18 of 19

No. : HM167158

### **Appendix B**

#### **Photographs of EUT**

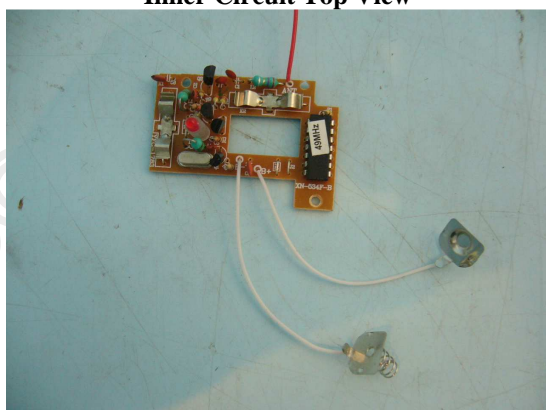
**Front View of the product**



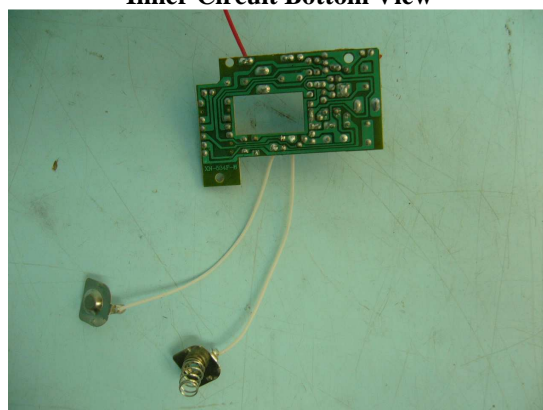
**Rear View of the product**



**Inner Circuit Top View**



**Inner Circuit Bottom View**



**The Hong Kong Standards and Testing Centre Ltd.**

10 Dai Wang Street, Taipo Industrial Estate, N.T., Hong Kong

Tel: (852) 2666 1888 Fax: (852) 2664 4353 Homepage: [www.hkstc.org](http://www.hkstc.org) E-mail: [hkstc@hkstc.org](mailto:hkstc@hkstc.org)

This report shall not be reproduced unless with prior written approval from The Hong Kong Standards and Testing Centre Ltd.  
For Conditions of Issuance of this test report, please refer to the overleaf or Homepage



## **STC Test Report**

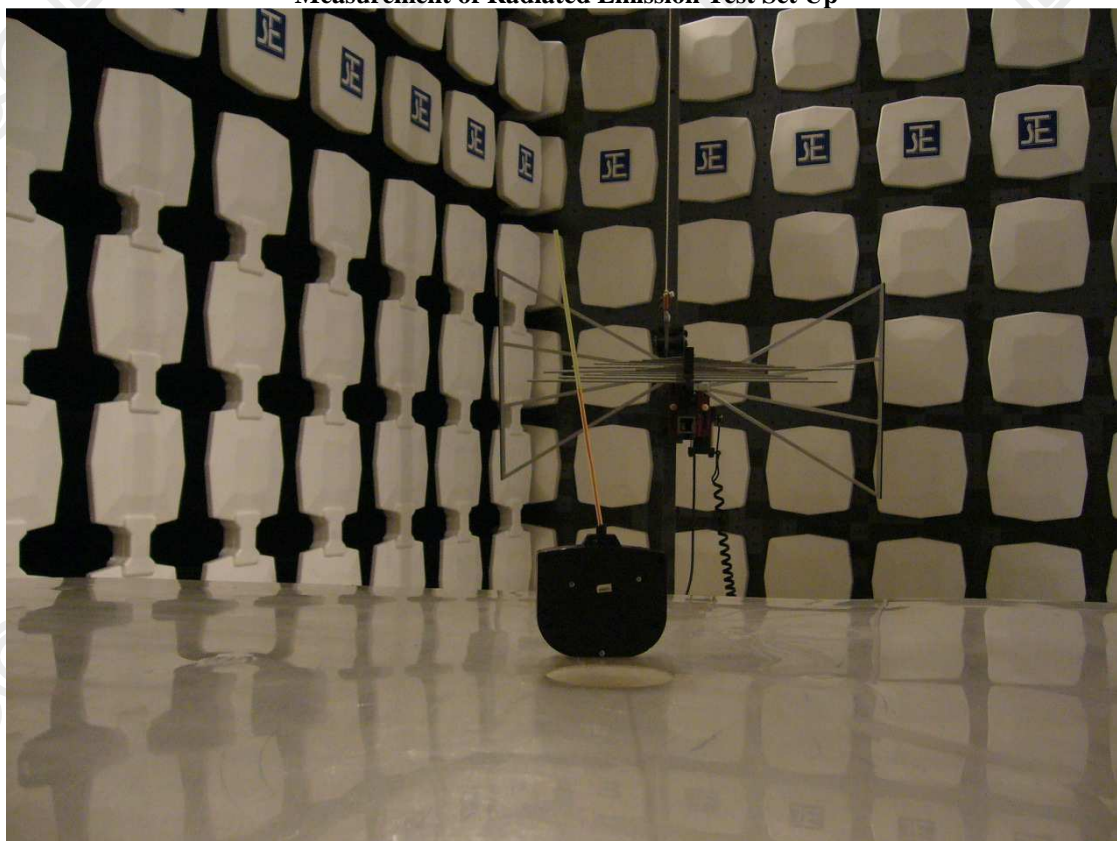
Date : 2011-11-11

Page 19 of 19

No. : HM167158

### **Photographs of EUT**

**Measurement of Radiated Emission Test Set Up**



**\*\*\*\*\* End of Test Report \*\*\*\*\***

**The Hong Kong Standards and Testing Centre Ltd.**

10 Dai Wang Street, Taipo Industrial Estate, N.T., Hong Kong

Tel: (852) 2666 1888 Fax: (852) 2664 4353 Homepage: [www.hkstc.org](http://www.hkstc.org) E-mail: [hkstc@hkstc.org](mailto:hkstc@hkstc.org)

This report shall not be reproduced unless with prior written approval from The Hong Kong Standards and Testing Centre Ltd.  
For Conditions of Issuance of this test report, please refer to the overleaf or Homepage