



WARNING! Not suitable for children under 3 years of age due to small parts.  
Product contents, specifications & colors may vary from illustration.  
Please retain all information for future reference.



RADIO CONTROL BATTERY OPERATED FULL FUNCTION

2  
FREQUENCY  
27MHz  
49MHz

TWIN  
PACK

**SPEEDBOATS**  
• WATER RESISTANT  
• SUPER SPEED  
• JETBOAT & TRANSMITTER

RADIO CONTROL BATTERY OPERATED FULL FUNCTION

2  
FREQUENCY  
27MHz  
49MHz



TWIN  
PACK

**WARNING:**  
CHOKING HAZARD - Small parts  
Not for children under 3 years

3+  
FOR AGES 3  
AND UP



RADIO CONTROL BATTERY OPERATED FULL FUNCTION

TWIN  
PACK



2  
FREQUENCY  
27MHz  
49MHz

**SPEEDBOATS**  
• WATER RESISTANT  
• SUPER SPEED  
• JETBOAT & TRANSMITTER

Pre-Price

**SPEEDBOATS**

RADIO CONTROL BATTERY OPERATED FULL FUNCTION

TWIN  
PACK

• WATER RESISTANT • SUPER SPEED  
• JETBOAT & TRANSMITTER



2  
FREQUENCY  
27MHz  
49MHz

**SPEEDBOATS**

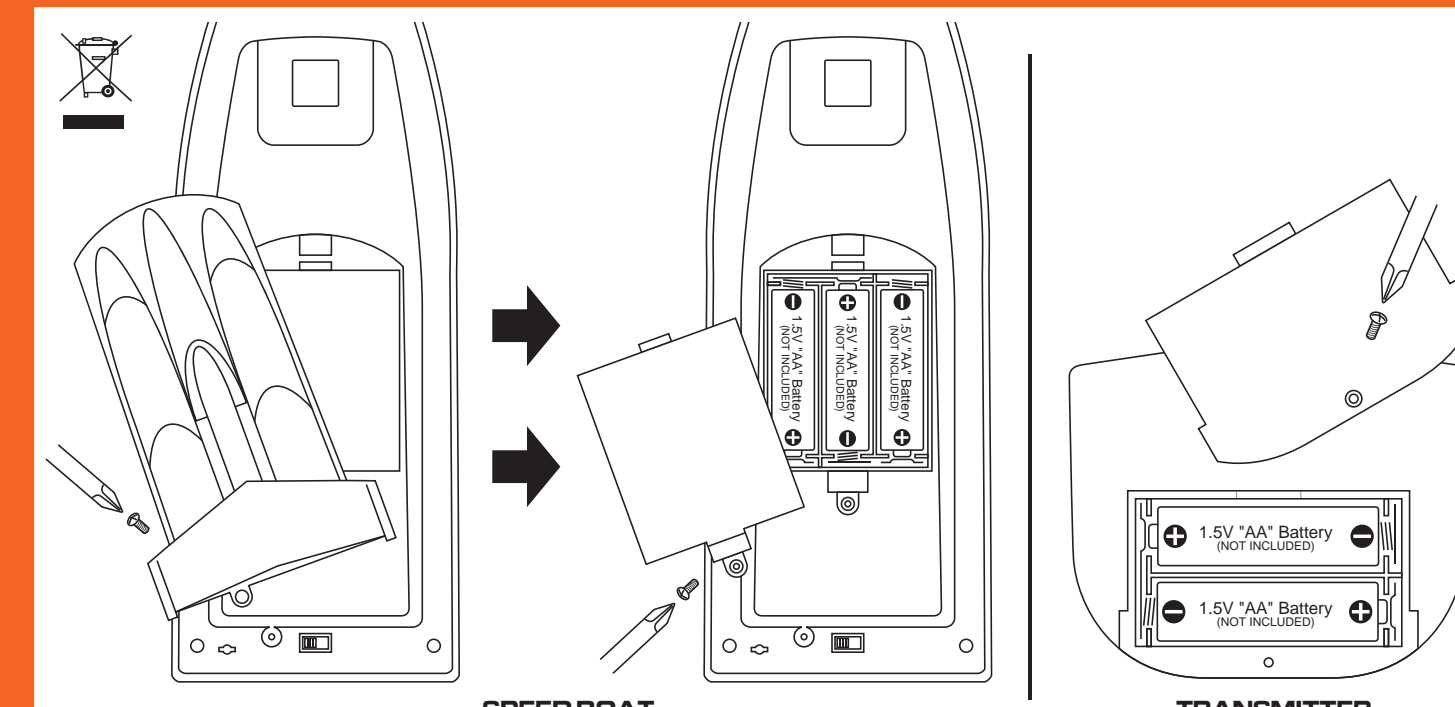
RADIO CONTROL BATTERY OPERATED FULL FUNCTION

TWIN  
PACK

• WATER RESISTANT • SUPER SPEED  
• JETBOAT & TRANSMITTER



2  
FREQUENCY  
27MHz  
49MHz



Caution: changes or modifications not expressly approved by the party responsible for compliance could void the user's authority to operate the equipment.  
NOTE: This equipment has been tested and found to comply with the limits for a Class B digital device, pursuant to Part 15 of the FCC Rules. These limits are designed to provide reasonable protection against harmful interference to a residential installation. This equipment generates, uses and can radiate radio frequency energy and, if not installed and used in accordance with the instructions, may cause harmful interference to radio communications. However, there is no guarantee that interference will not occur in a particular installation. If this equipment does cause harmful interference to radio or television reception, which can be determined by turning the equipment off and on, the user is encouraged to try to correct the interference by one or more of the following measures:  
• Reorient or relocate the receiving antenna.  
• Increase the separation between the equipment and receiver.  
• Connect the equipment into an outlet on a circuit different from that to which the receiver is connected.  
• Consult the dealer or experienced radio/TV technician for help.

**INSTALLING THE BATTERIES:**  
• Unscrew and open battery compartment cover to insert batteries in the toy as shown in diagram. Make sure all batteries are at correct polarity. Close the cover and tighten the screw.  
• Use 3 "1.5V" batteries for each speed boat, 2 "1.5V" batteries for each transmitter, type "AA" or equivalent for each unit (not included).  
• Use only the batteries recommended.  
• Do not mix alkaline, standard (carbon-zinc) or rechargeable (Ni-Cd) batteries.  
• Do not mix new and used batteries together.  
• Remove batteries when toy is not in use.  
• Remove used batteries from toy and dispose of in accordance with the maker's recommendation.  
• Do not attempt to recharge non-rechargeable batteries.  
• Do not use rechargeable batteries.  
• Batteries are to be inserted with the correct polarity.  
• To avoid short-circuit, keep battery compartment free of all material except batteries.