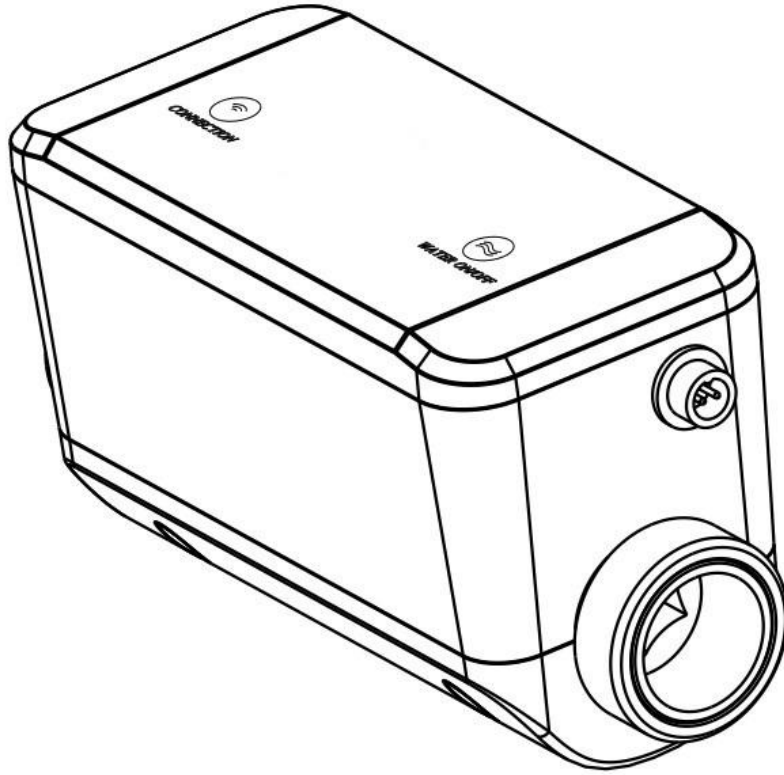


Wi-Fi Water Valve Manual



FCC STATEMENT :

This device complies with Part 15 of the FCC Rules. Operation is subject to the following two conditions:

(1) This device may not cause harmful interference, and

(2) This device must accept any interference received, including interference that may cause undesired operation.

Warning: Changes or modifications not expressly approved by the party responsible for compliance could void the user's authority to operate the equipment.

NOTE: This equipment has been tested and found to comply with the limits for a Class B digital device, pursuant to Part 15 of the FCC Rules. These limits are designed to provide reasonable protection against harmful interference in a residential installation. This equipment generates uses and can radiate radio frequency energy and, if not installed and used in accordance with the instructions, may cause harmful interference to radio communications. However, there is no guarantee that interference will not occur in a particular installation. If this equipment does cause harmful interference to radio or television reception, which can be determined by turning the equipment off and on, the user is encouraged to try to correct the interference by one or more of the following measures:

Reorient or relocate the receiving antenna.

Increase the separation between the equipment and receiver.

Connect the equipment into an outlet on a circuit different from that to which the receiver is connected.

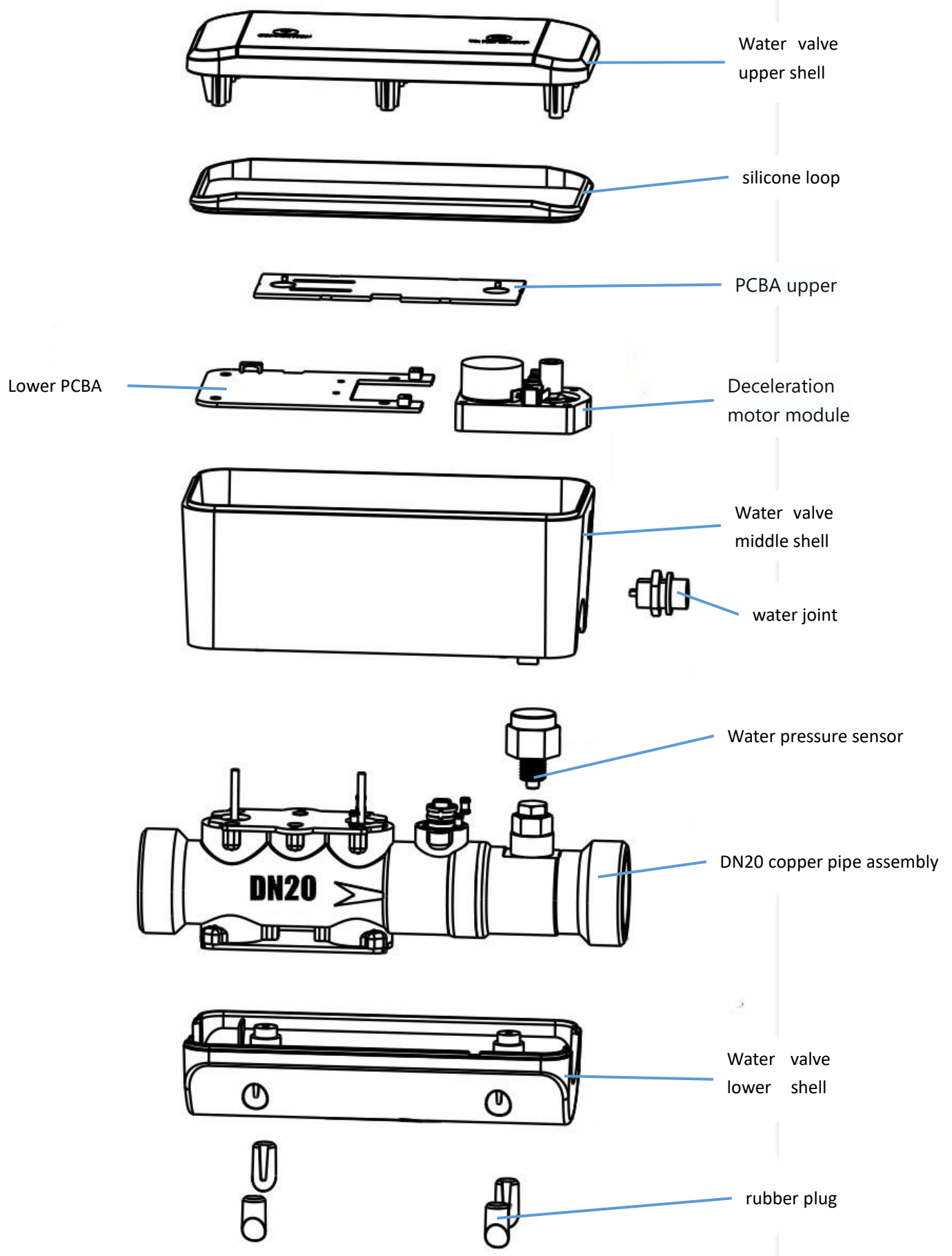
Consult the dealer or an experienced radio/TV technician for help.

FCC Radiation Exposure Statement:

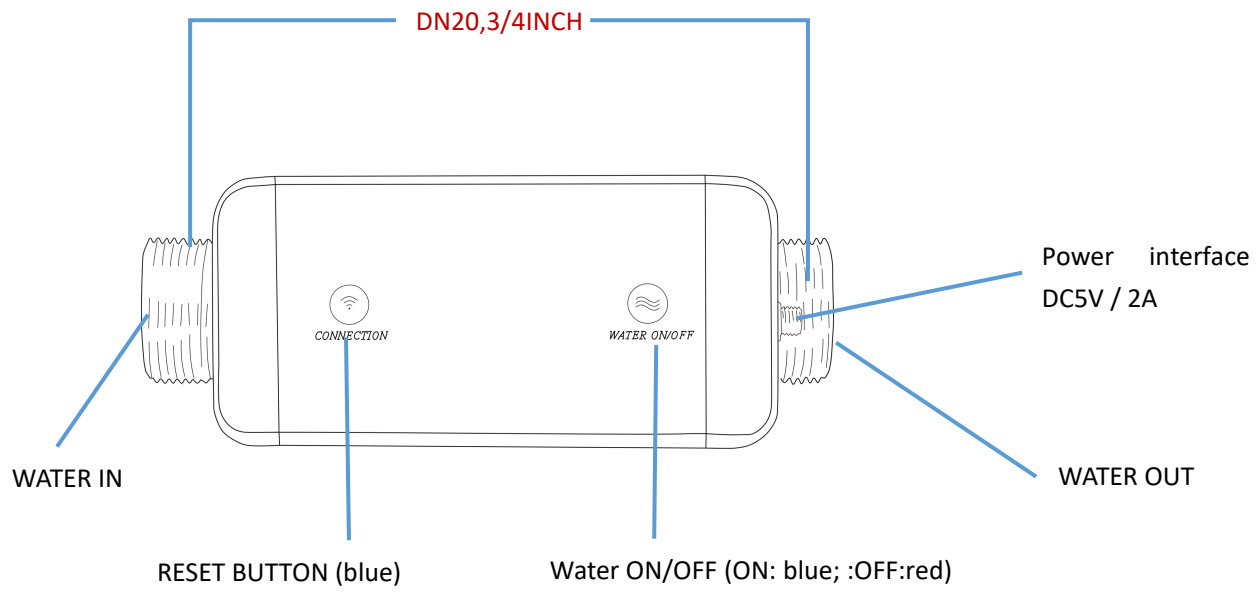
This equipment complies with FCC radiation exposure limits set forth for an uncontrolled environment. This equipment should be installed and operated with minimum distance 20cm between the radiator & your body.

Product configuration and installation

1.Product structure

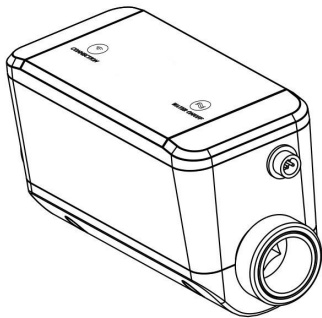


2.Appearance description

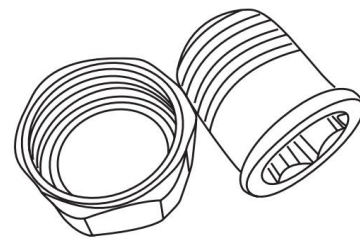


3.Packaging accessories

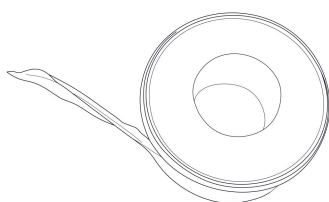
① water valve



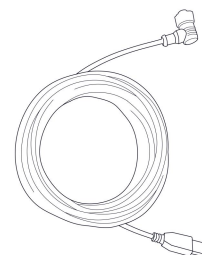
② water pipe connector * 2



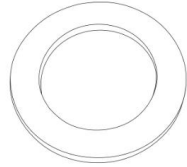
③ waterproof tape (3M)



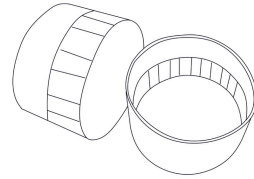
④ power cable (5M)



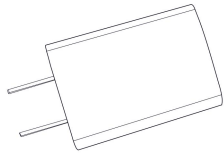
⑤ Waterproof silicone pad*2



⑥ threaded protection cover (pre-install in factory)



⑥ Power Adapter (5V / 2A)

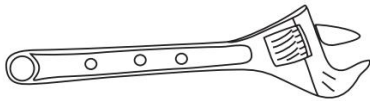


4.Installation method

(1) Water pipe installation

Prepare tools

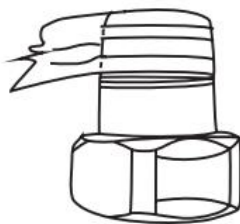
spanner



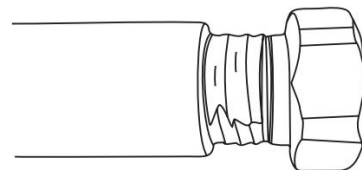
hexagon bar



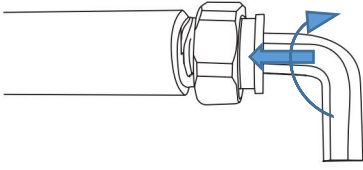
1.Wrap the water pipe connector with waterproof tape



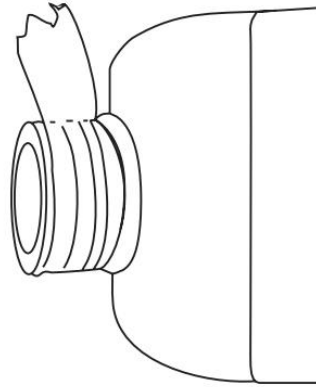
2.Connect the adapter to the municipal water pipe



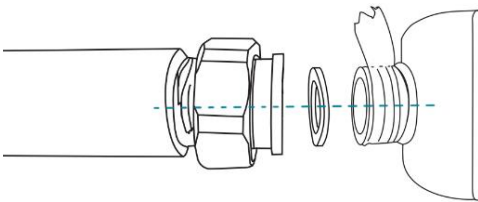
3.Tighten the water pipe connector with the inner hex



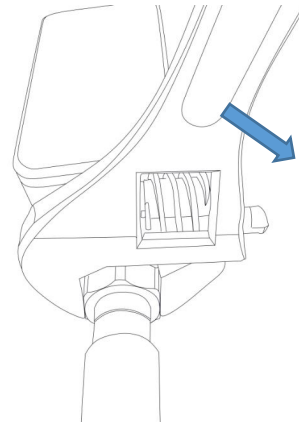
4.wrap water valve copper pipe with waterproof tape



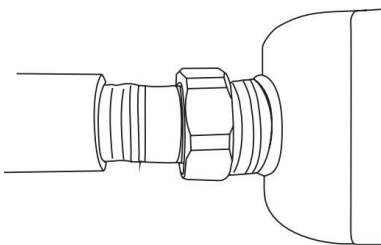
5.Put the silicone pad into the water pipe connector, and then dock the water valve copper pipe



6.Tighten the adapter nuts with the wrench



7.Single-sided installation completed



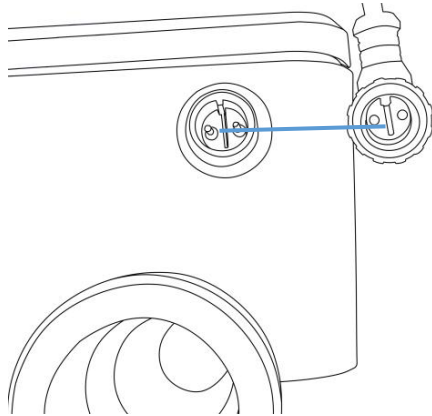
8.Install the other side of the water valve using the same method

(2) Power installation

- ① Pay attention to the power concave-convex groove during connecting to the power
- ② Align the interface, press the power supply firmly and rotate the nut clockwise

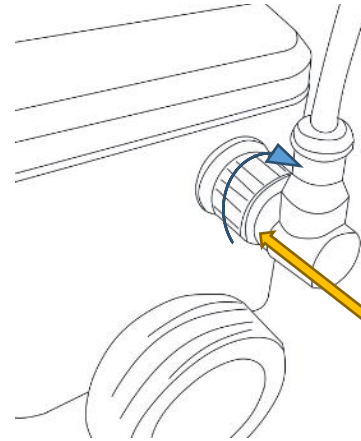
③ Turn on the power supply, installation finished .

1. Check the power supply interface slot



2. Align at the interface and press firmly

3. Turn the nut clockwise



5. Notes:

- (1) The minimum water temperature detection temperature is -10°C . When the water temperature is below 0°C and freeze, the water valve cannot be switched
- (2) When installing the water valve, be sure to wrap the waterproof tape to prevent water leakage
- (3) Recommended installation location: indoor main gate of water inlet
- (4) Make sure to shut off all the water source before installation, and turn it on after the installation is completed

Spec of product

Device name: Wi-Fi smart water valve

Power supply: DC 5V / 2A

Maximum working current: 800mA

Standby power consumption: 0.3W

Valve on / off time: 12 seconds

Valve diameter: DN20 3/4 inch pipe

Water temperature detection range: $-10\sim 65^{\circ}\text{C}$ ($14\sim 149^{\circ}\text{F}$)

Water temperature detection accuracy: $\pm 0.5^{\circ}\text{C}$ (0.9°F)

Water pressure range: 0~200 PSI

Water pressure detection accuracy: $\pm 1\text{KPa}$

Accuracy of water flow detection: 0.1m^3

Wireless frequency: 2.412~2.484GHz/5.18~5.85GHz

Wireless standard: IEEE 802.11a/b/g/n

Wi-Fi distance: 45M

Spiral pitch: 14 NPS

Waterproof level: IPX7

Size: L19.5cm x D7.8cm x H10.17cm

Operating temperature: $0\sim 50^{\circ}\text{C}$ ($32\sim 122^{\circ}\text{F}$)

Storage temperature: $-10\sim 65^{\circ}\text{C}$ ($14\sim 149^{\circ}\text{F}$)

Storage humidity: 10 ~ 80%

The indicator light corresponds to the device status

device status	Indicator status
Bluetooth mode / Smart Wi-Fi / AP compatible mode	The indicator light flashes once every 2 seconds
Water valve switch status	Water valve switch indicator light is flashing (green:on / red: off)
reset	Press the reset button for 6s, the reset button indicator will flash slowly (device is waiting for configuration)

Tip: The device can be powered by the power bank .

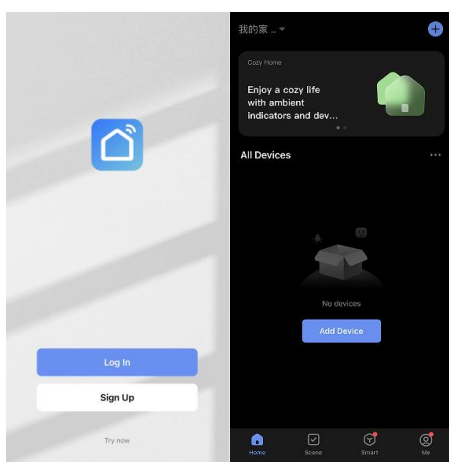
Reset indicator : Power on the device, it is flashing blue in default (Waiting for configuration); If the indicator is abnormal, please press the reset button for 6 seconds to reset and configure the internet;

download APP

1. Android system: Download the "Smart Life" APP at GooglePlay;
IOS system: Download the "Smart Life" APP from the AppStore;



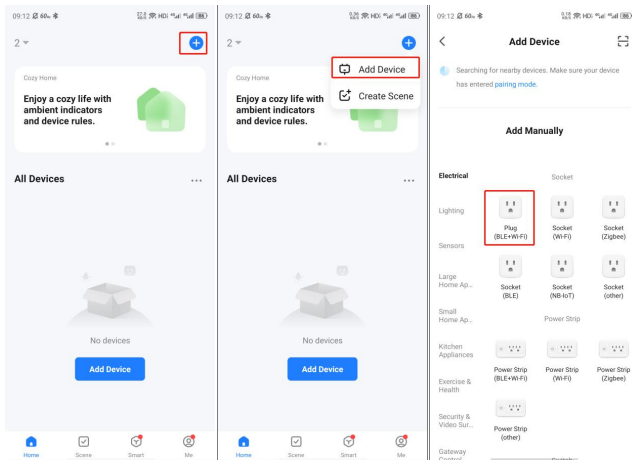
2. Run the APP, register, and log in to your account



Add equipment

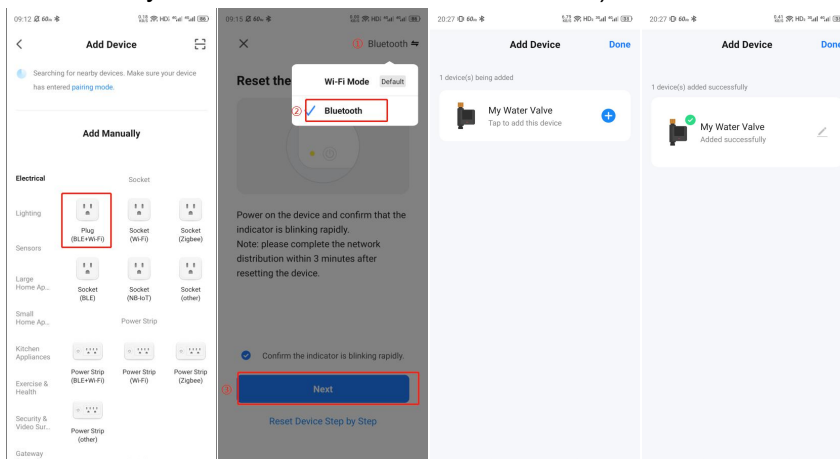
The default power on the device is standby mode (slow flash); If the indicator is not on, press the reset key for 6 seconds and then add the device

1. Select the device type to add

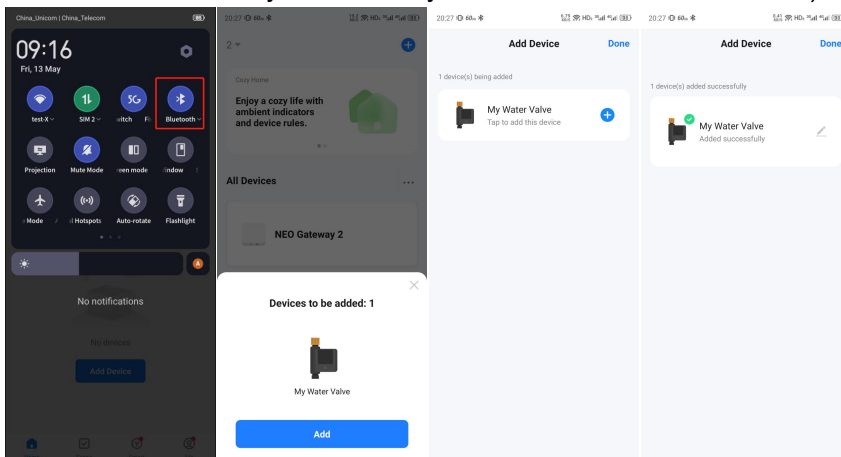


2. Add device via Bluetooth (this method is recommended)

- (1) Method 1: Active Bluetooth in Mobile phone to add the device through Bluetooth mode (the standby mode can be added with Bluetooth)

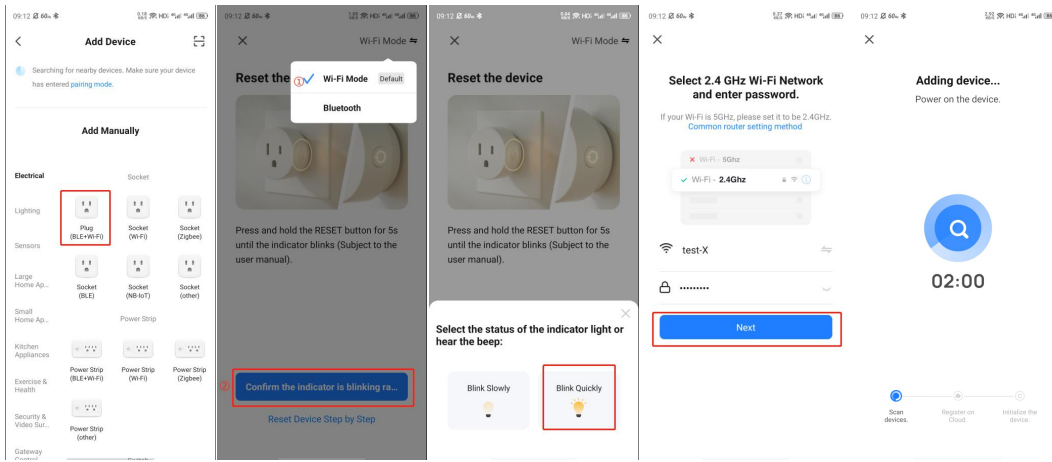


- (2) Method 2 (After activating Bluetooth, enter the APP interface, the device will be automatically searched by Bluetooth, and then click Add)



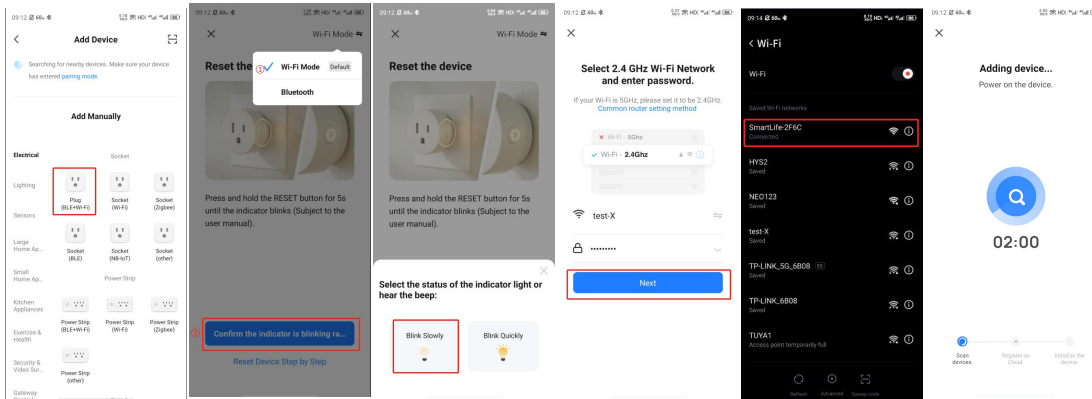
3. Add device via Wifi Mode

Press the reset button until the device flashes slowly (pending distribution mode), then add device (follow the APP prompts)



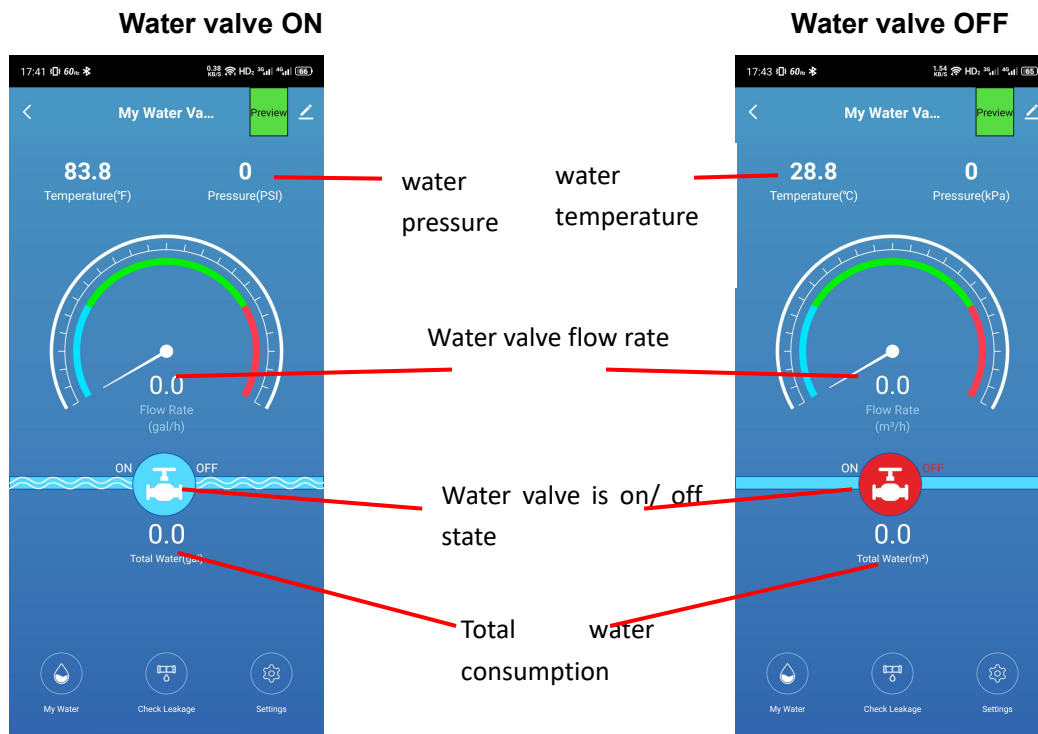
4. Add device via AP compatible mode

Press the reset button until the device flashes slowly (pending distribution mode), and then add (follow the APP prompts)

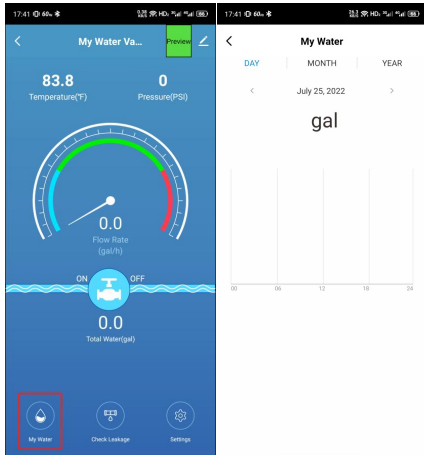


Main functions, working status and record Settings

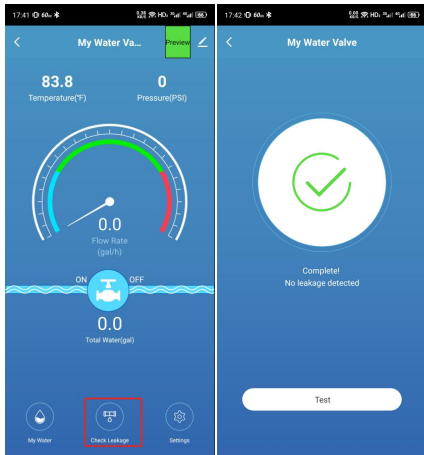
1. APP main interface



2. Water quantity record; (you can see the water usage in day, month and year)

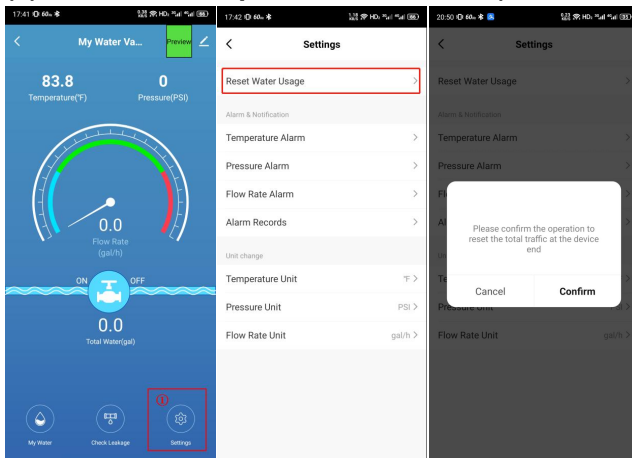


3. Water leakage self-inspection; (One key to check the leakage ,if detected the leakage ,it will be reported immediately)

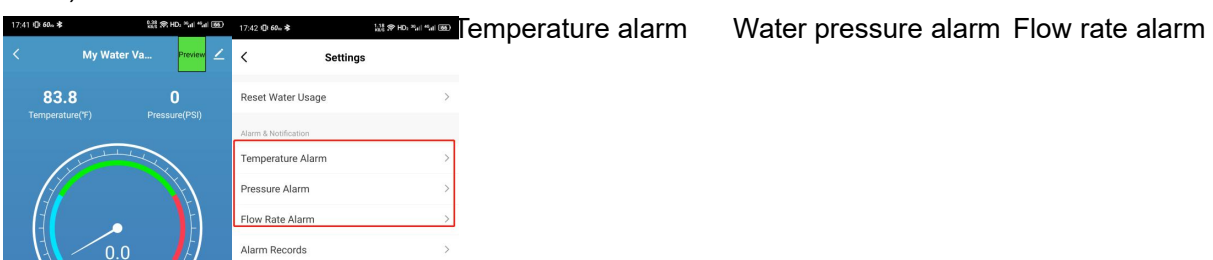


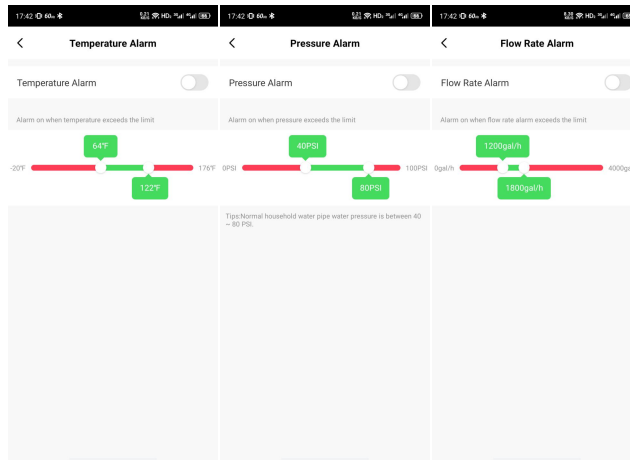
4. Alarm / display settings

(1) Water consumption reset switch; (clear the total water consumption)

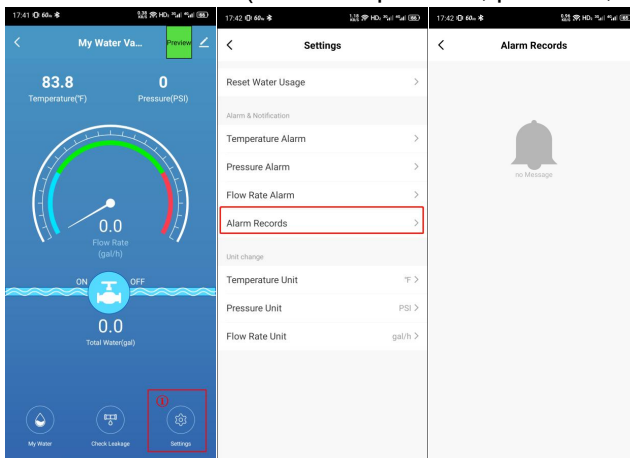


(2) Water temperature alarm, pressure alarm and flow rate alarm (The alarm switch can be turned on or off)



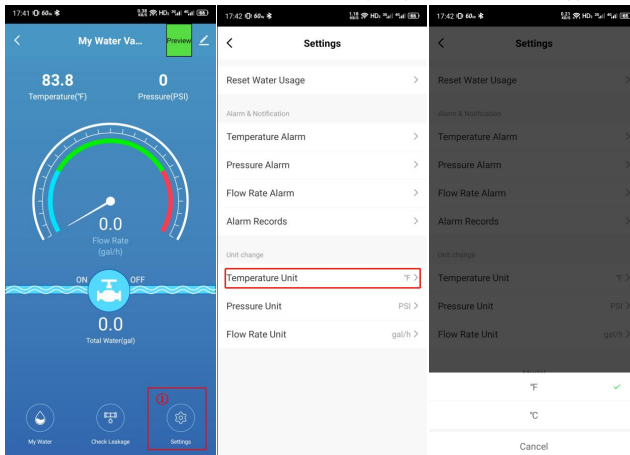


(3) Alarm record (water temperature, pressure, water consumption and water leakage alarm)

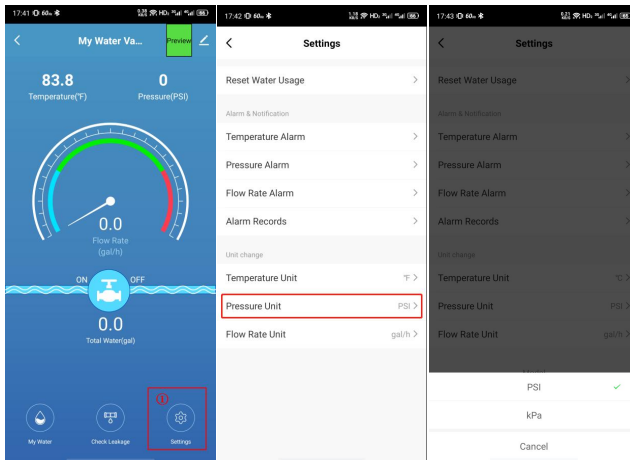


5. Setting the temperature, pressure and flow

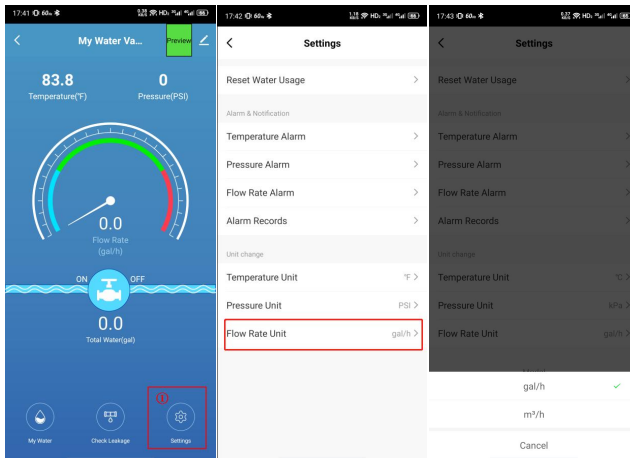
(1) Temperature unit settings ("°C" and "°F")



(2) Pressure unit setting ("PSI" and "kPa")



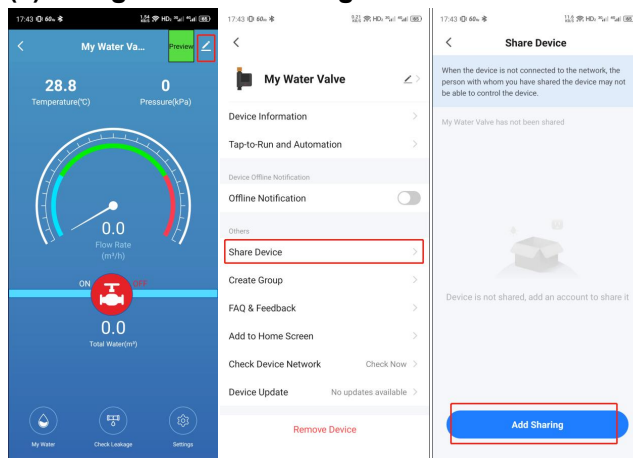
(3) Flow unit setting ("gal / h" and "m³ / h")



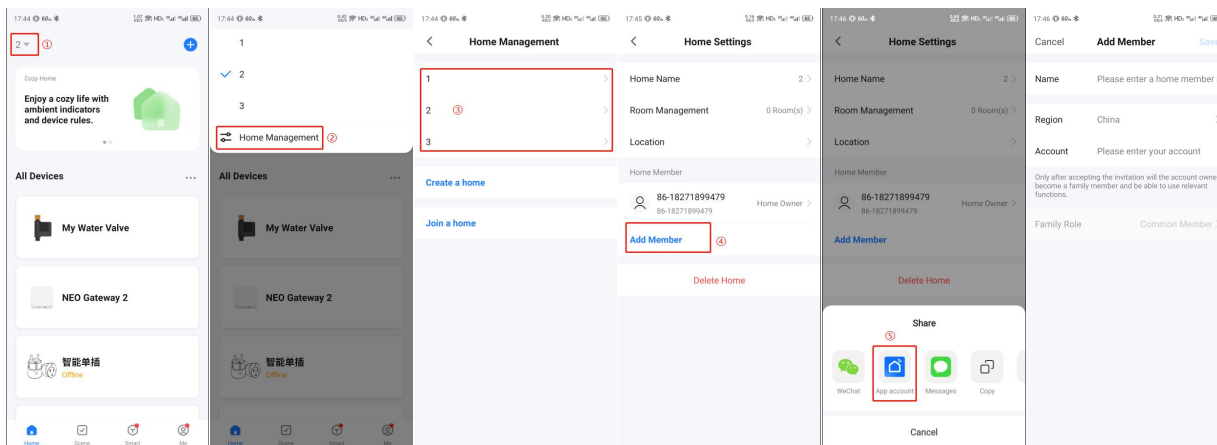
Other functions

1. Share device

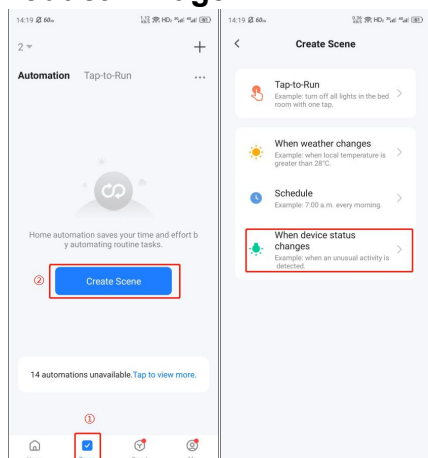
(1) Single device sharing



(2) Family group sharing

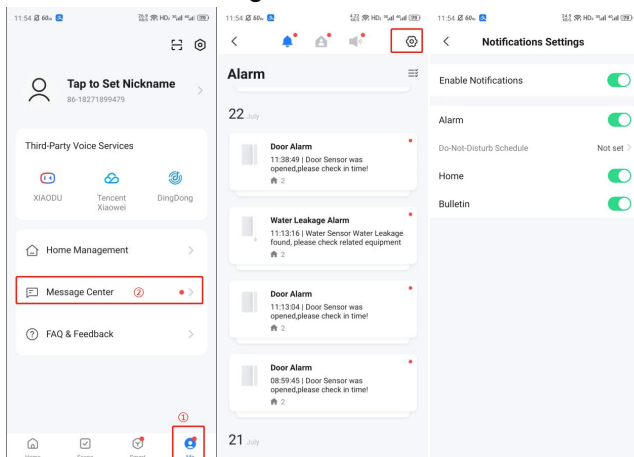


2. Product linkage



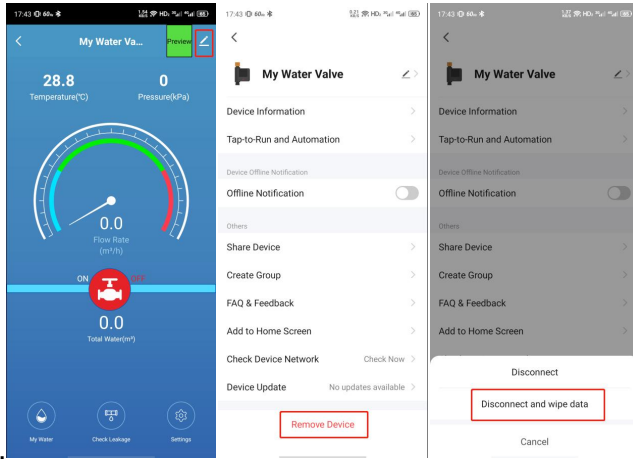
3. Push notification management

APP push notification: Turn off the switch, all devices in APP can not receive the push notification, but all alarm messages still can be checked in the message center;



4. Clear the records;

Remove Device from app ,Disconnect and wipe date



Make Your Home Smarter