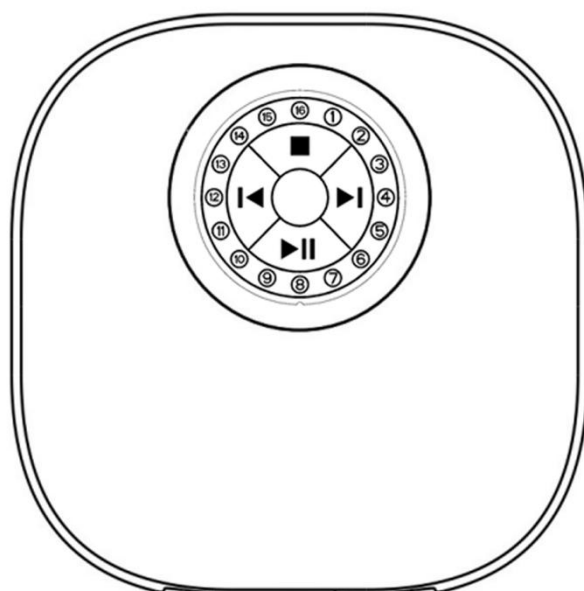


Sprinkler Controller



Product Configuration and Installation

FCC Statement

This equipment has been tested and found to comply with the limits for a Class B digital device, pursuant to part 15 of the FCC rules. These limits are designed to provide reasonable protection against harmful interference in a residential installation. This equipment generates, uses and can radiate radio frequency energy and, if not installed and used in accordance with the instructions, may cause harmful interference to radio communications. However, there is no guarantee that interference will not occur in a particular installation. If this equipment does cause harmful interference to radio or television reception, which can be determined by turning the equipment off and on, the user is encouraged to try to correct the interference by one or more of the following measures:

- Reorient or relocate the receiving antenna.
- Increase the separation between the equipment and receiver.
- Connect the equipment into an outlet on a circuit different from that to which the receiver is connected.
- Consult the dealer or an experienced radio/TV technician for help.

To assure continued compliance, any changes or modifications not expressly approved by the party.

Responsible for compliance could void the user's authority to operate this equipment. (Example- use only shielded interface cables when connecting to computer or peripheral devices).

This equipment complies with Part 15 of the FCC Rules. Operation is subject to the following two conditions:

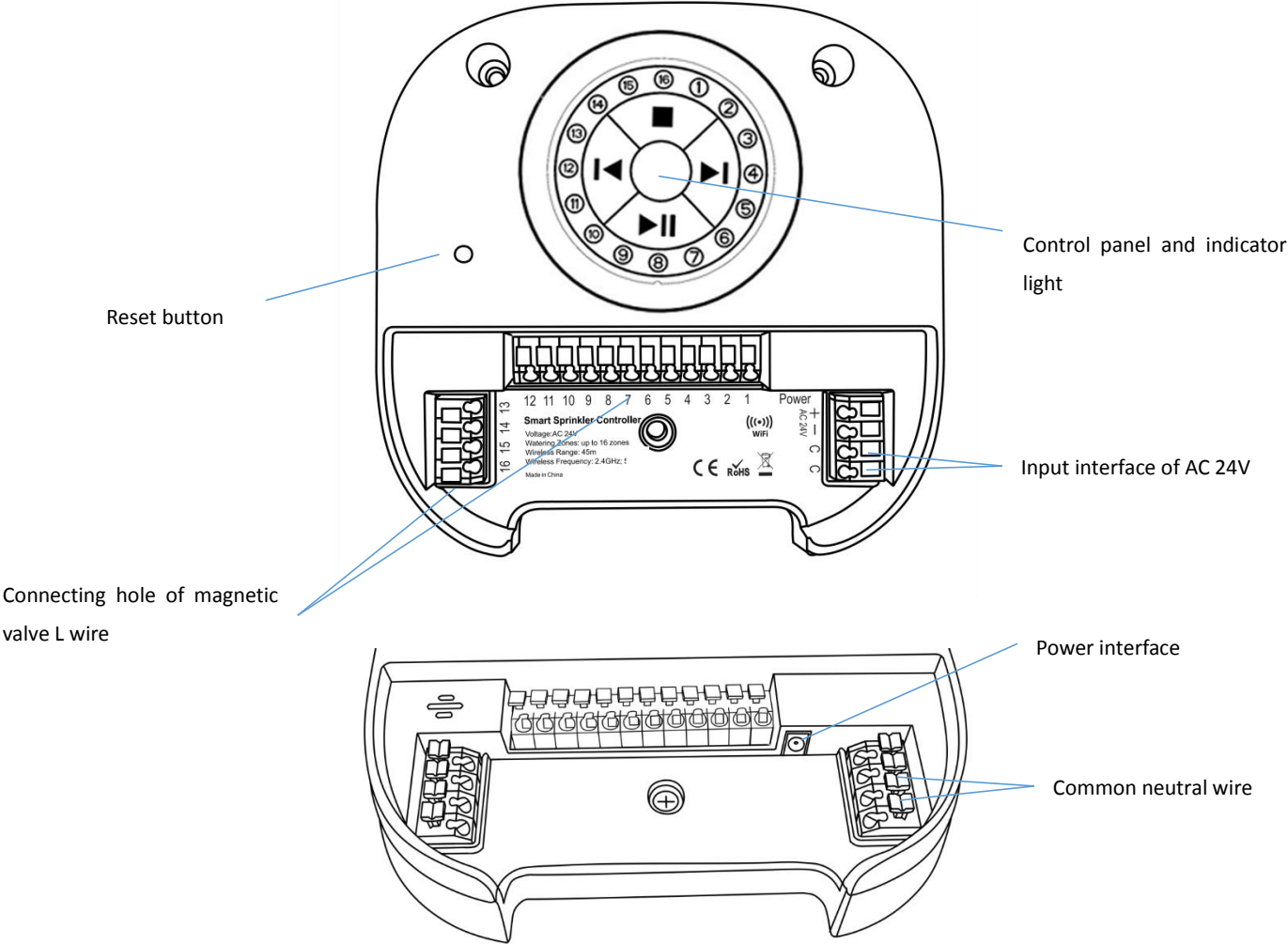
- (1) This device may not cause harmful interference, and
- (2) This device must accept any interference received, including interference that may cause undesired operation.

FCC Radiation Exposure Statement:

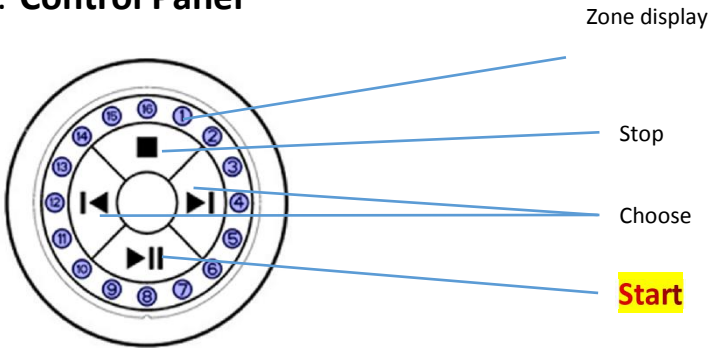
The equipment complies with FCC Radiation exposure limits set forth for

uncontrolled environment. This equipment should be installed and operated with minimum distance 20cm between the radiator and your body.

1.Product Configuration



2. Control Panel



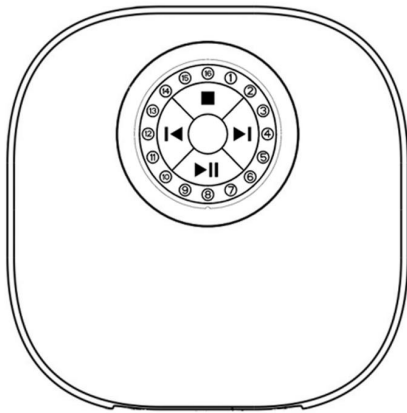
3. Indicator Light Status

Indicator Light Status	Device status
1~16 zones blue led flashing	Mode of waiting for configuration
Led lights off	Device in idle condition

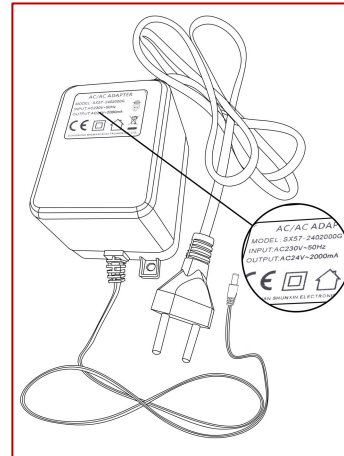
LED lights of all the zones keep blue color, but led light of Single zone keep both red and blue color	In the status of choosing watering zone
Led light of single zone sometimes darker, sometimes brighter	In watering status
Led of single zone keep red color all the time	Watering anomaly(please check the magnetic valve)

4.Accessories

Sprinkler controller



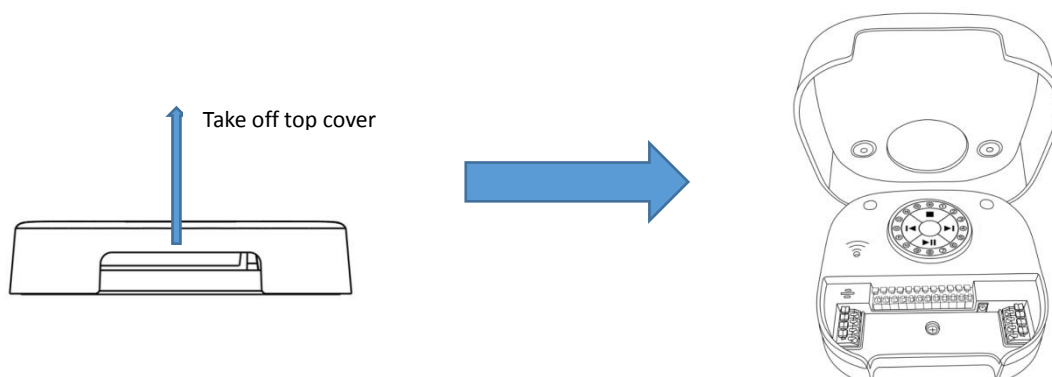
Power adaptor



Wiring instructions

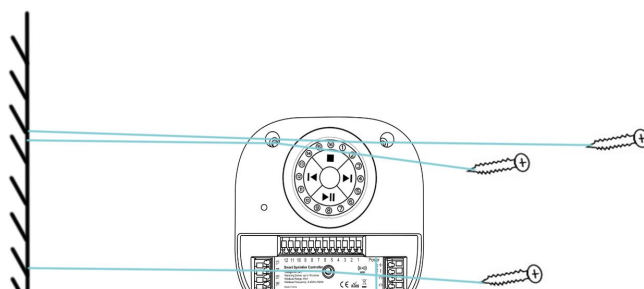
1. Take off top cover

Notes:The top cover is closed by magnetic suction and can be opened directly)

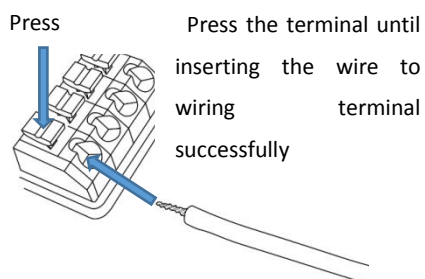


2. Installation

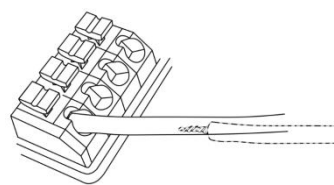
Fix sprinkler controller on the installation area by using screws then connect it to power source through adaptor



3. Wiring

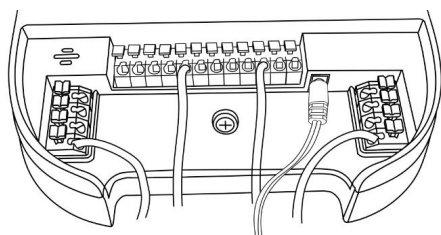


After inserting the wire to terminal, loosen the finger

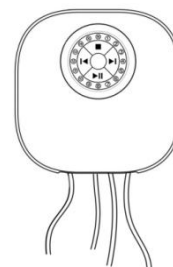


4. Complete the wiring

Connecting all the needed wires to wiring terminal



Close the top cover



Product Specifications

Product name:Wi-Fi Smart Sprinkler Controller

Input Voltage: AC 24V 2A

Watering zones: up to 16 zones

Wi-Fi Range:45m

Wi-Fi Frequency:2.4GHz

Wi-Fi Standards:IEEE 802.11b/g/n(2.4GHz)

Bluetooth Version:Bluetooth 5.0

Operation Mode:Touch screen mode

Working Temperature:-10℃ ~ 60℃ (14°F ~ 140°F)

Working Humidity:1% ~ 95%RH(non-condensing)

Product size:150mm*149mm*32mm

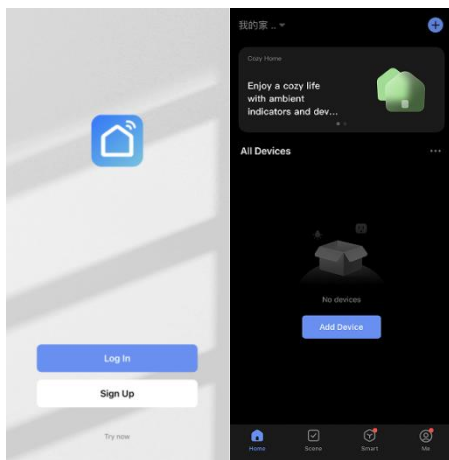
Download Application

1,Android system: Download “Smart Life”APP from Google Play to your mobile.

IOS system: Download “Smart Life”APP from App Store to your mobile.



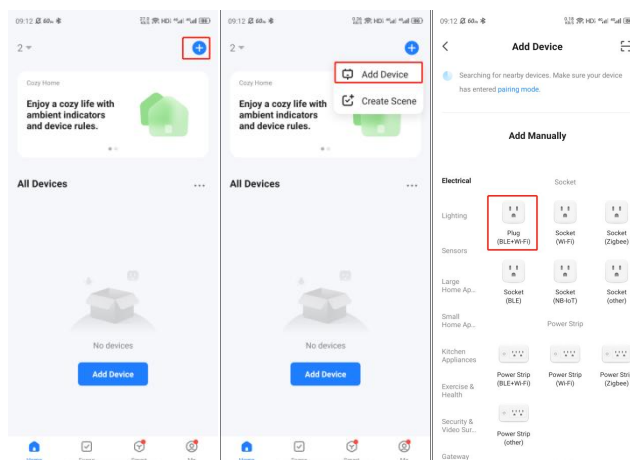
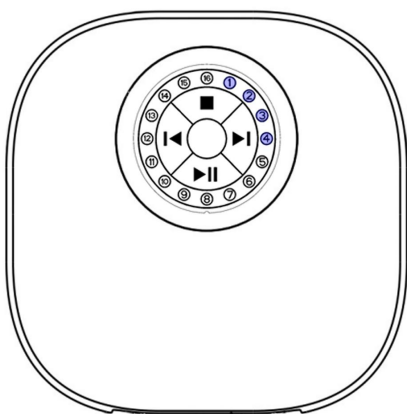
2,Enter the app, register and login in



Configure device to application

The default status is waiting for configuration after powering the device on(indicator flashing quickly). If indicator lights are not on, please press the reset button and keep 6 seconds then configure device to app.

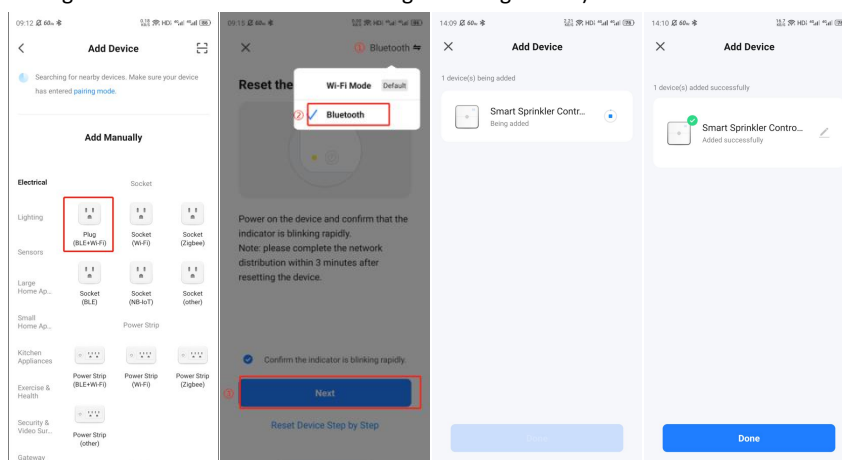
1. Before configuring to app, please select the correct device type



2. Bluetooth configuration (This method is preferentially recommended)

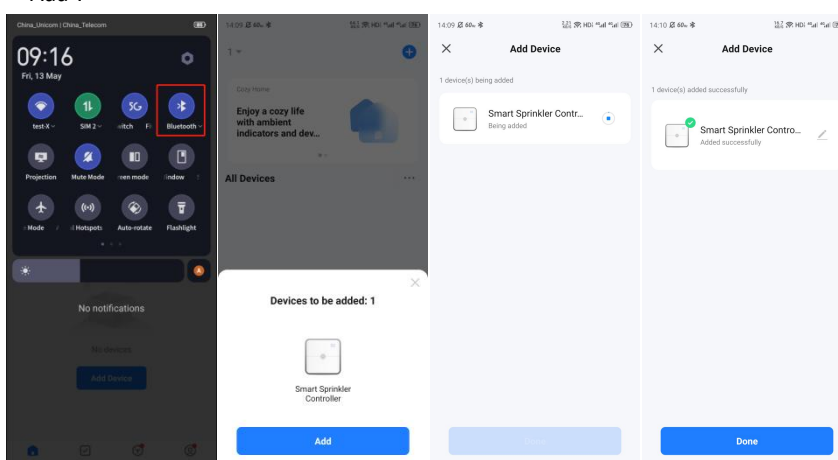
(1) Method 1

Turn on Bluetooth on the mobile phone and configure the device through Bluetooth mode (can configure the device through Bluetooth in the mode of waiting for configuration).



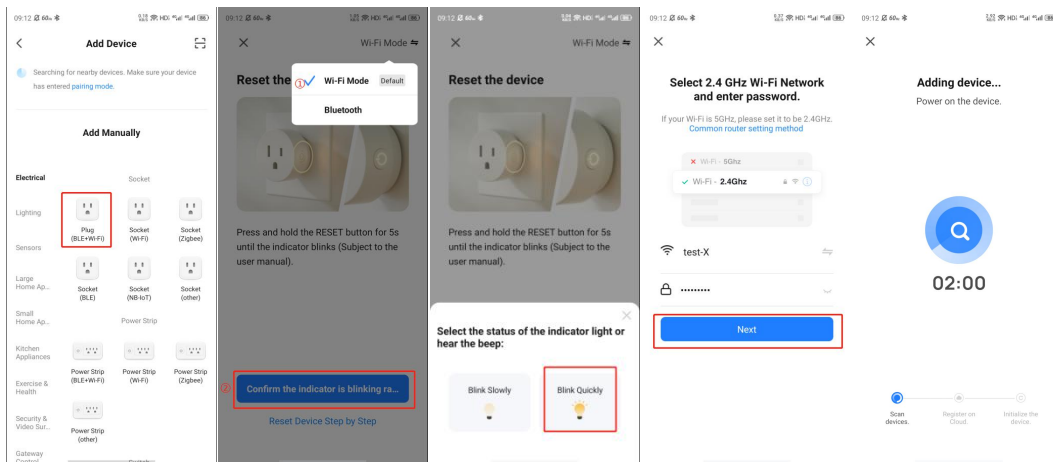
(2) Method 2

After turning on Bluetooth, enter the APP interface, the device will be automatically searched by Bluetooth, and then click "Add".



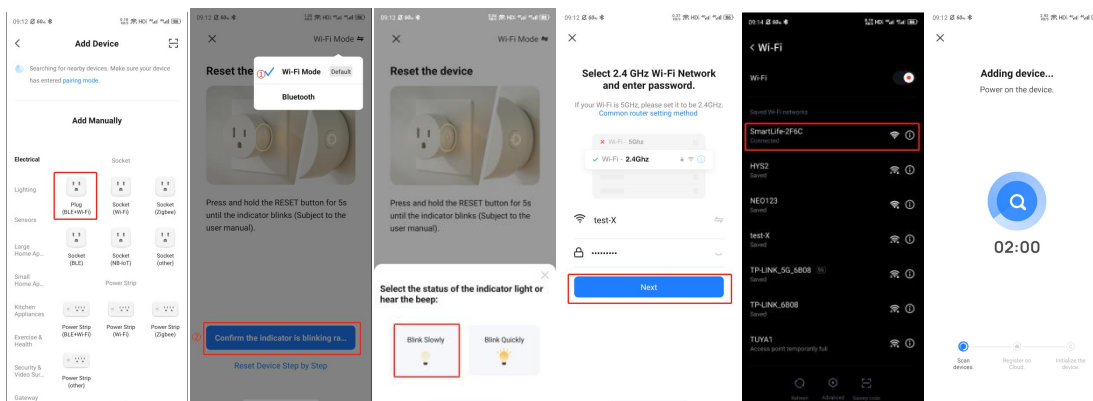
3. Smart Wi-Fi Configuration

Press the reset button until the device turns into a slow blinking indicator (mode of waiting for configuration), and then configure it (please follow the APP prompt).

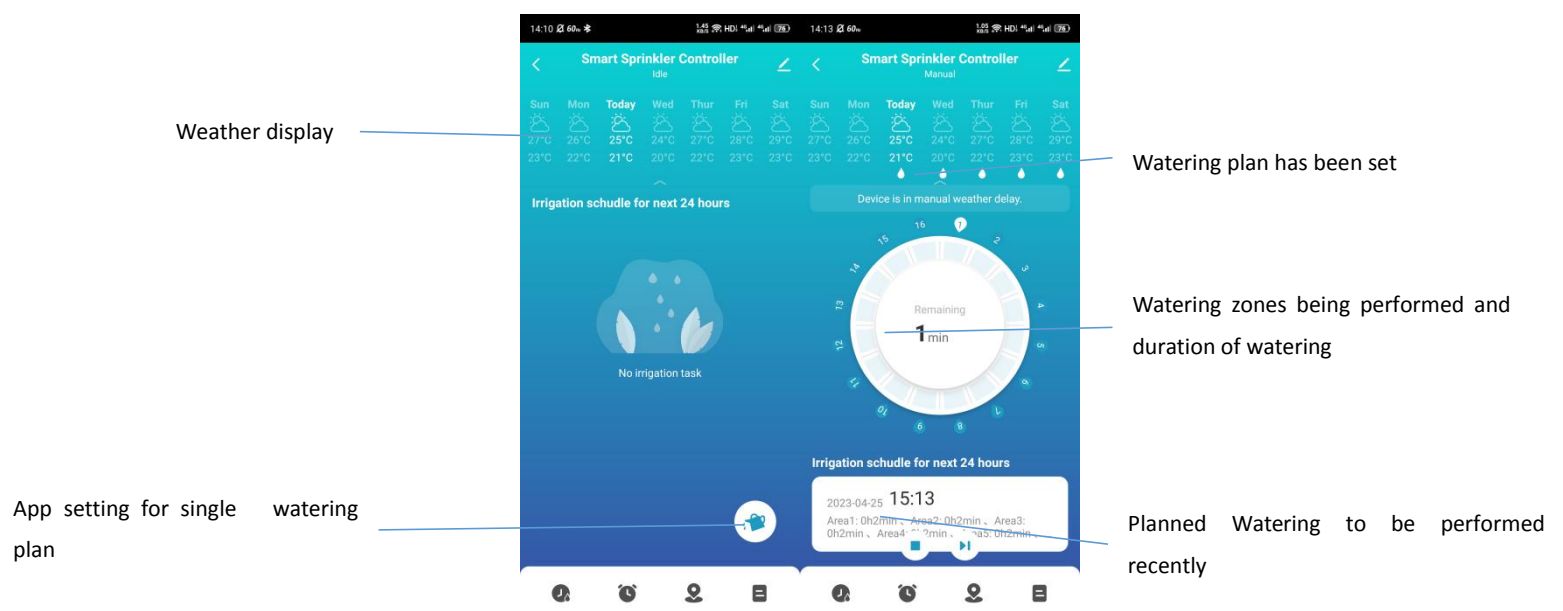


4. AP mode configuration

Press the reset button until the device turns into a slow blinking indicator (mode of waiting for configuration), and then configure it (please follow the APP prompt).



Main function, working status and record setting



1. Single watering plan control

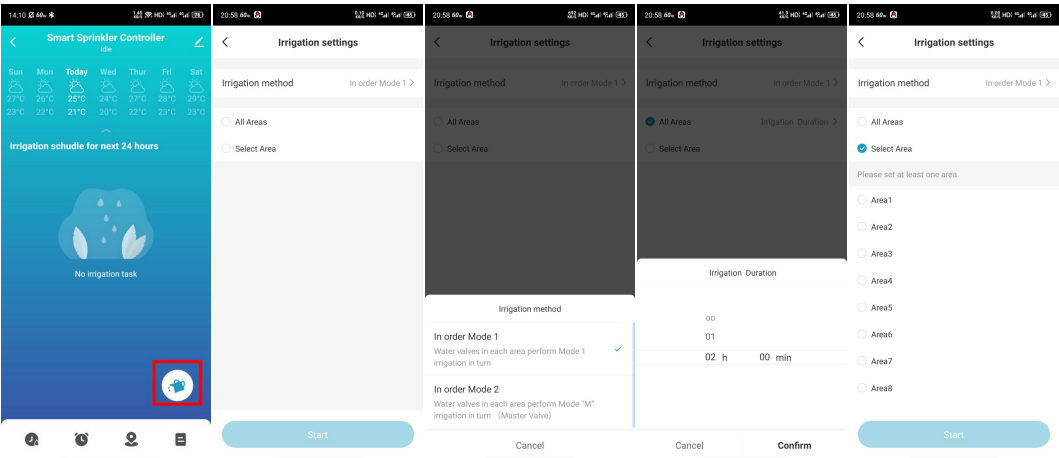
(1) Watering mode

Mode 1, Circulating watering for all the set zones

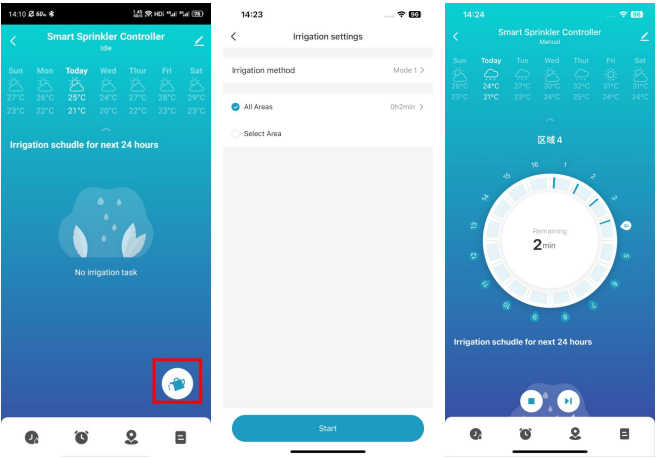
Mode 2, Watering for zone 1 all the time, and circulating watering for other set zones.

(2) Irrigation duration

The maximum duration that can be set is 2 hours

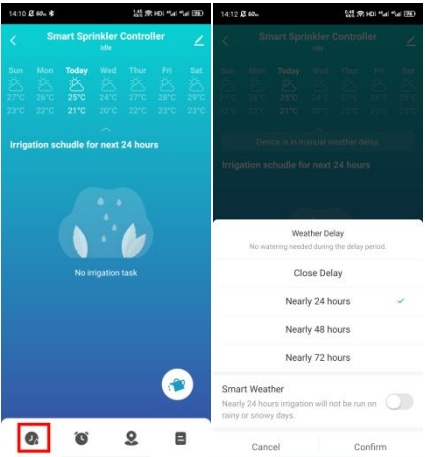


(3) When watering is started, a maximum of 4 zones can be turned on at the same time (for example, if all the zones are set to irrigate for 2 minutes, the device will turn on the first, second, third and fourth zones at the same time, and turn on the fifth zone after the end of the first zone, turn on the sixth zone after the end of the second zone, and so on).



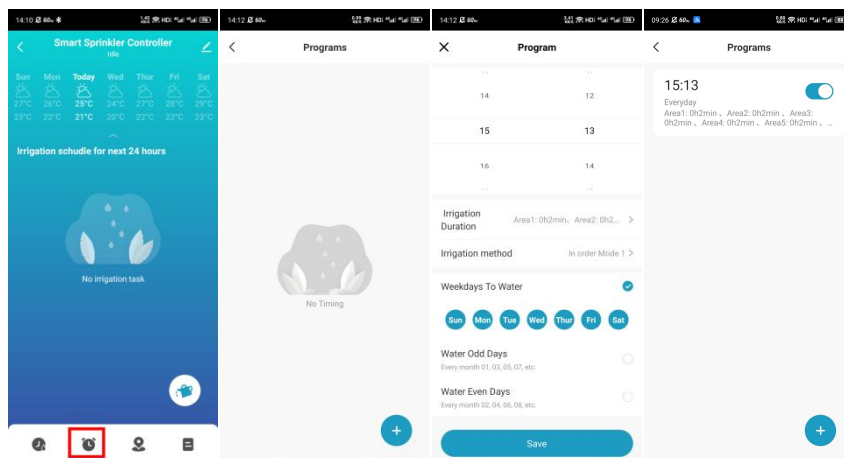
2. Weather delay

After opening the weather delay, if rain or snow is encountered, watering will not be performed in the delay period



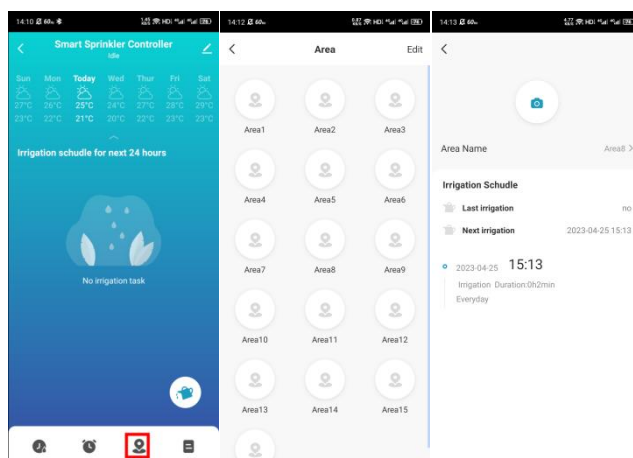
3. Schedule time

Need to set the irrigation duration, irrigation method and circulation mode

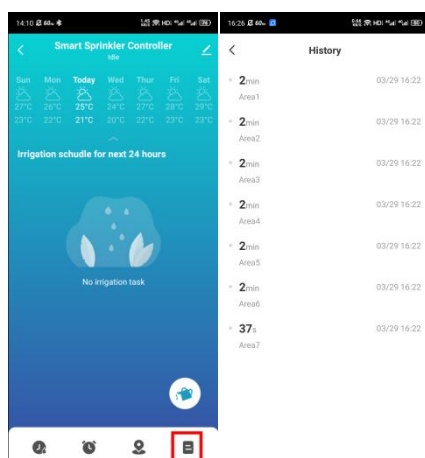


4. Zone/Area information

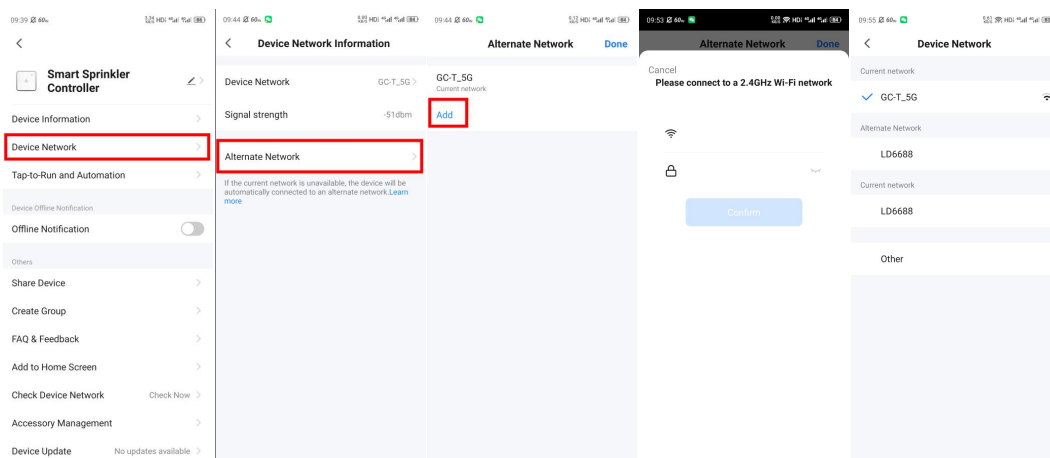
- (1) Check the zone/area watering plan
- (2) Modify the zone/area name and zone/area picture



5. Watering record

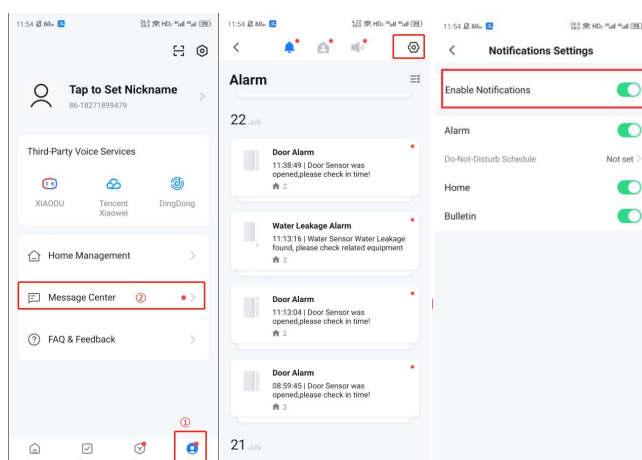


3.Alternative network(automatically switched to alternative network if network exception occurs after setting)



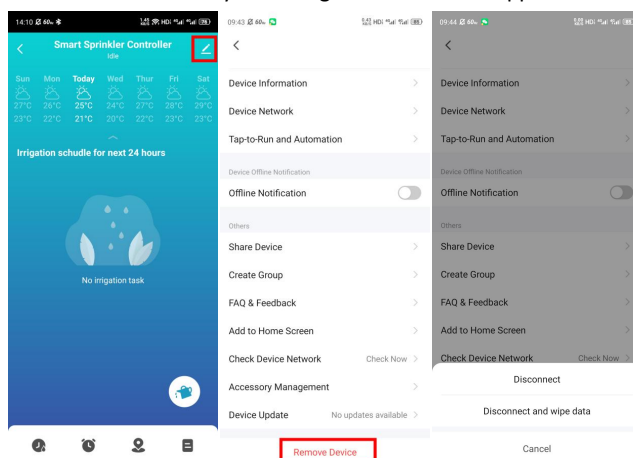
4.Notifications management

Turn off “Enable notifications”button then will not receive notifications from all the devices, but still have message record.



5.Clear the record

Can clear the record by removing the device from app.



FAQ

1. What does the alternating flashing of red and blue indicator lights mean when using the device touchpad to turn on a zone?

The alternating flashing of red and blue lights indicates that the device is in the state of simultaneously turning on the maximum limit of 4 zones for watering and cannot turn on any other zones. If you want to continue turning on other channels, please turn off the previously opened zones before attempting again.

2. What should I do if there is a malfunction alarm in the APP when a red light is on after turning on a certain zone?

Check if that zone is connected to a solenoid valve or if there is any abnormal contact at the wiring.

3. Why does the device suddenly shut off?

Reason 1, Please check if the power supply temperature is too high. When the temperature of the power supply exceeds the ambient temperature by 40 degrees (for example, ambient temperature is 30 degrees and a power supply temperature exceeding 70 degrees), the power supply will automatically shut down. Please unplug the power at this time, and wait until the power temperature returns to normal, then plug in the power to start the device for operation.

Reason 2, Please check if the current of the electromagnetic valve connected to the device is too high. It is recommended that the current of a single solenoid valve should not exceed 0.45A. If the current is too high, the equipment load may be too high, and the equipment may experience power failure after a period of use.

4. Why can't I start directly after repairing the zone malfunction?

When turning on a zone through the touchpad, if there is an abnormal start of a certain zone, after checking and repairing the zone, please first turn off this round of watering (close all opened zones), and this zone will only be successfully opened when the next round of watering is turned on.



Make Your Home Smarter