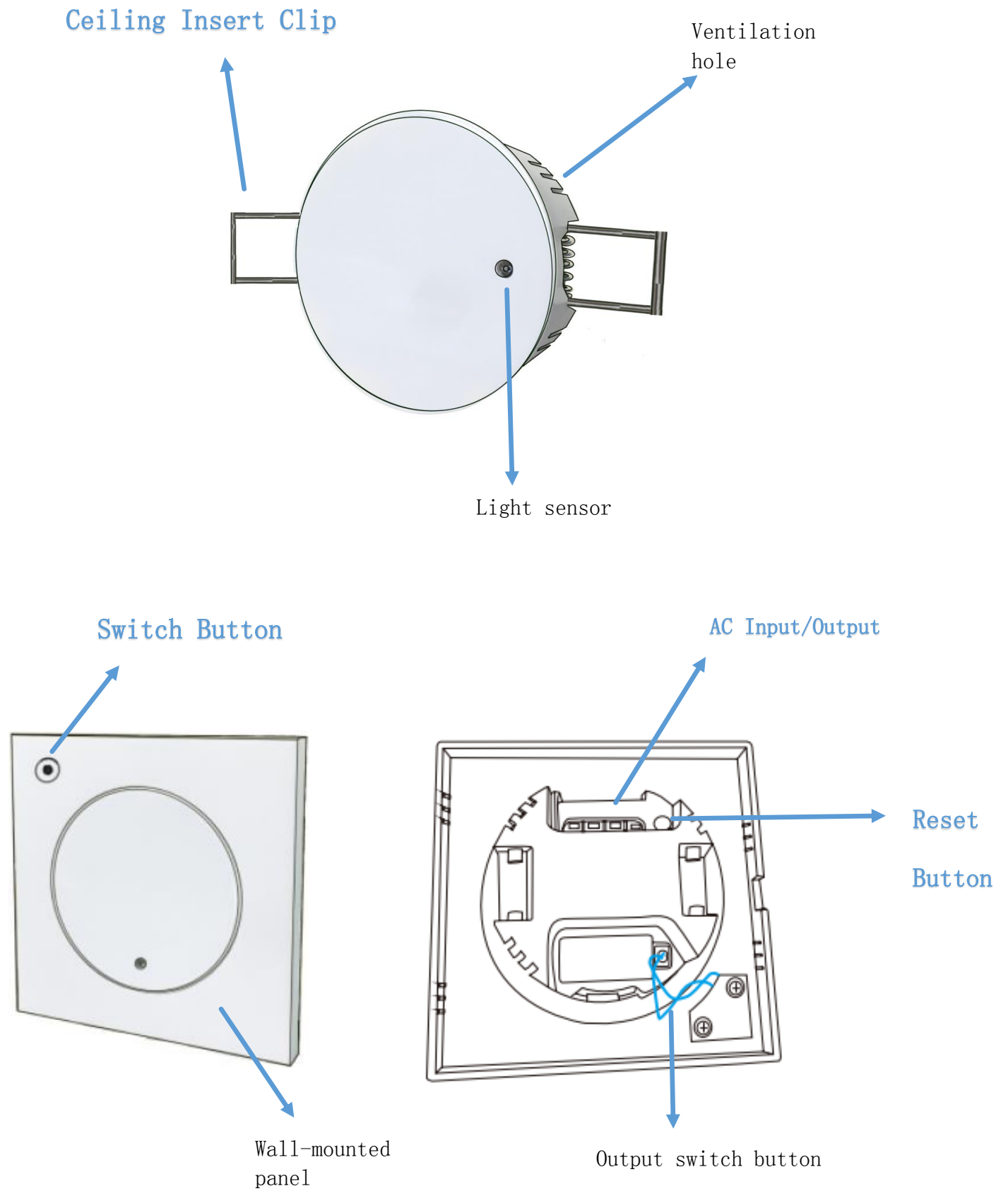


Presence Sensor Instruction Manual



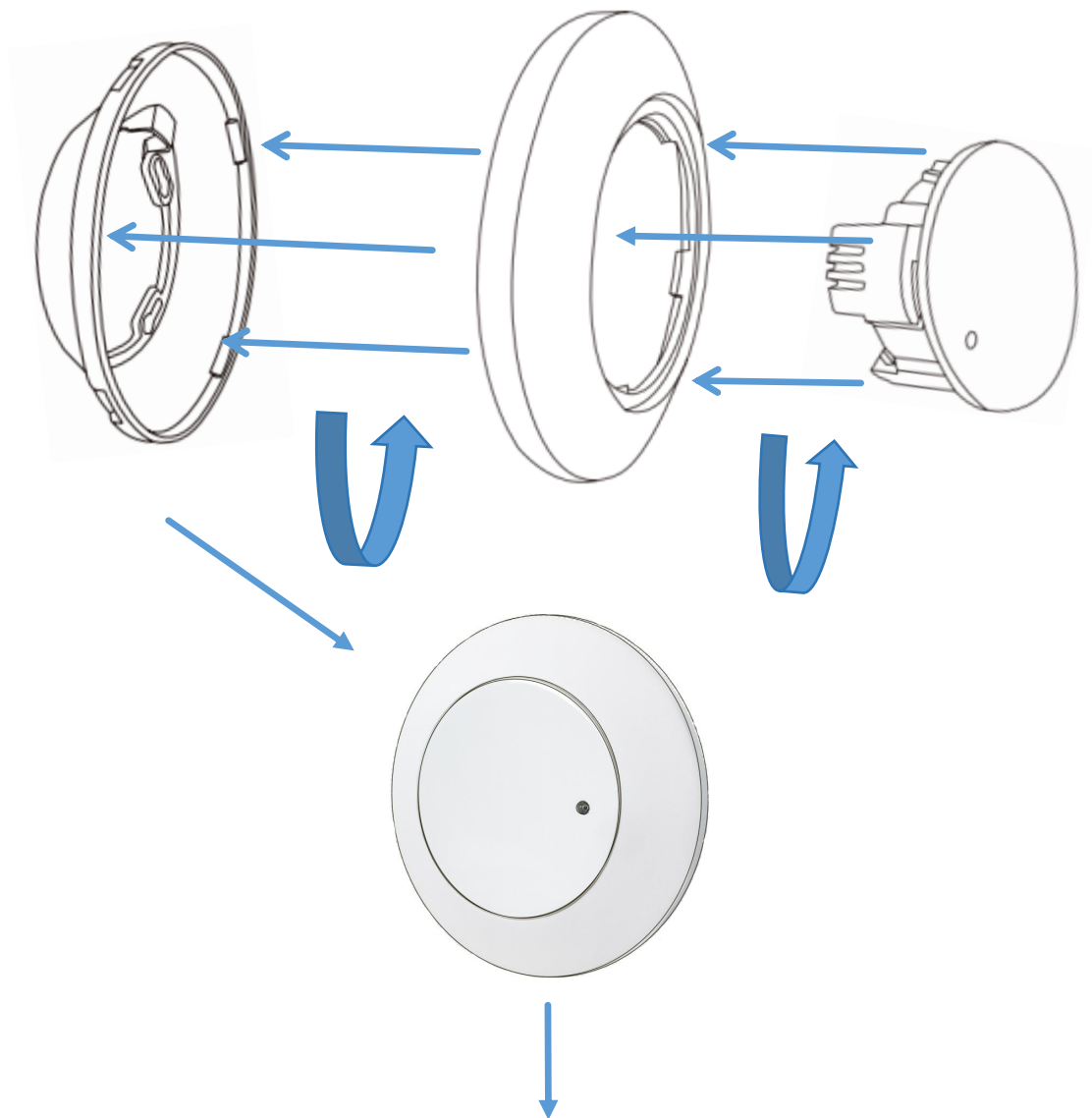
Product Configuration & Installation

1. Product Structure

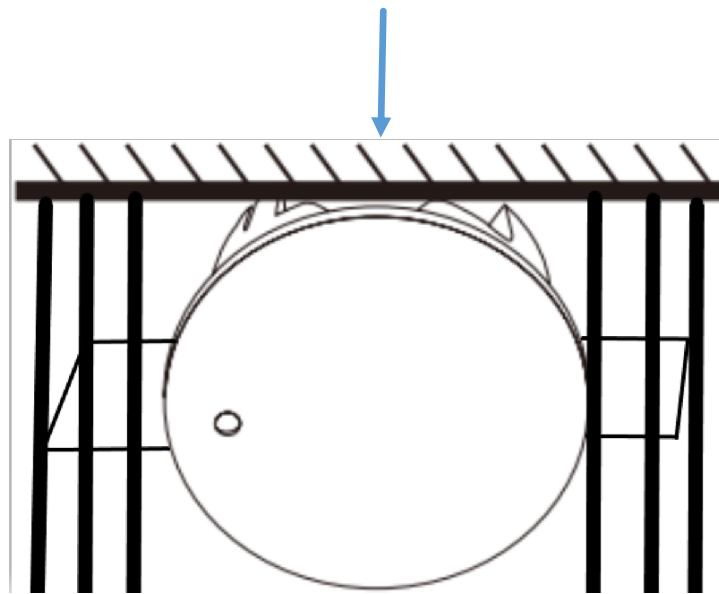


2. Installation Method

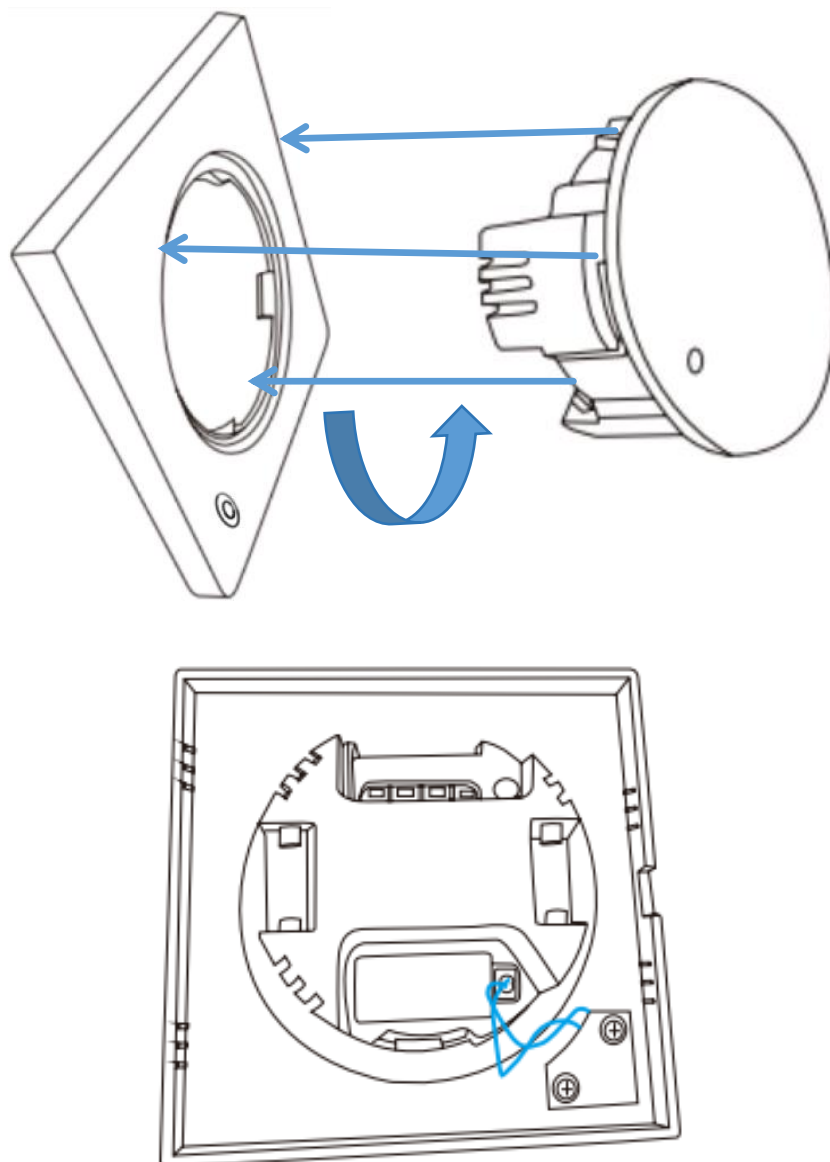
Ceiling-mounted installation

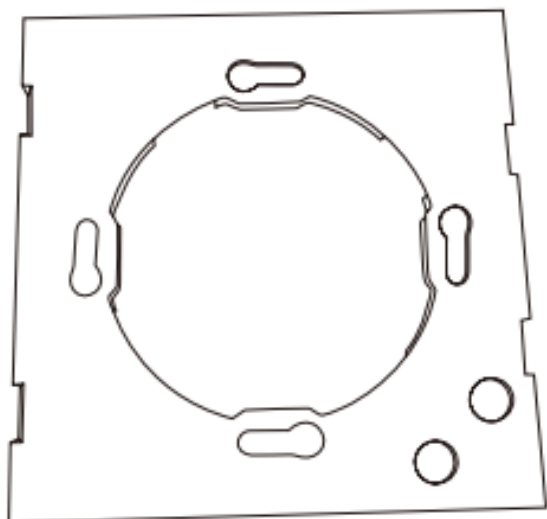


Ceiling Clip Installation

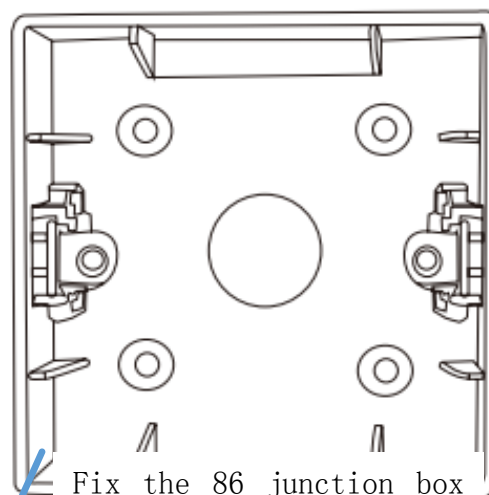


Wall-mounted installation

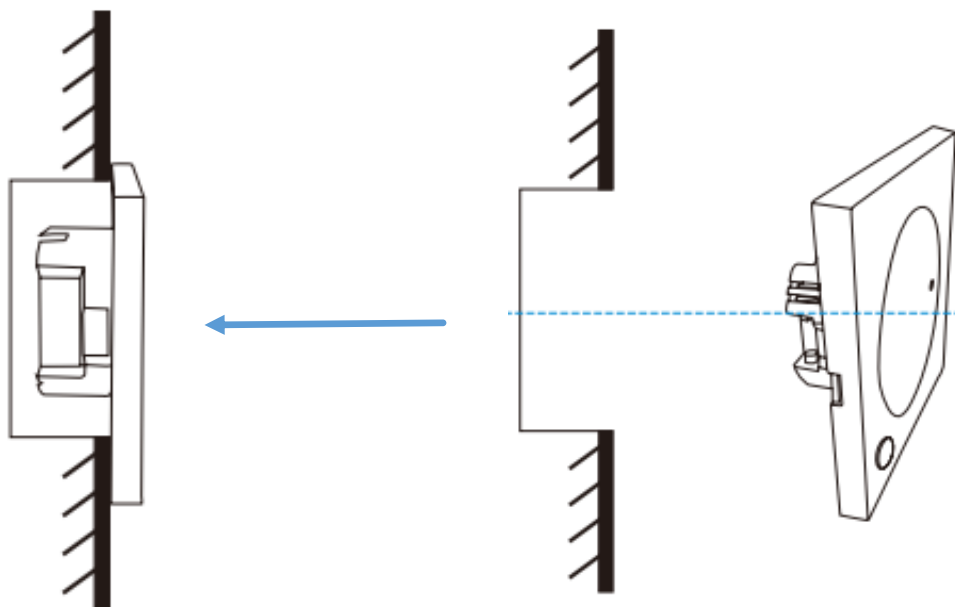




The base shell is mounted on the 86 junction box. (the 86 junction box needs to be purchased separately)



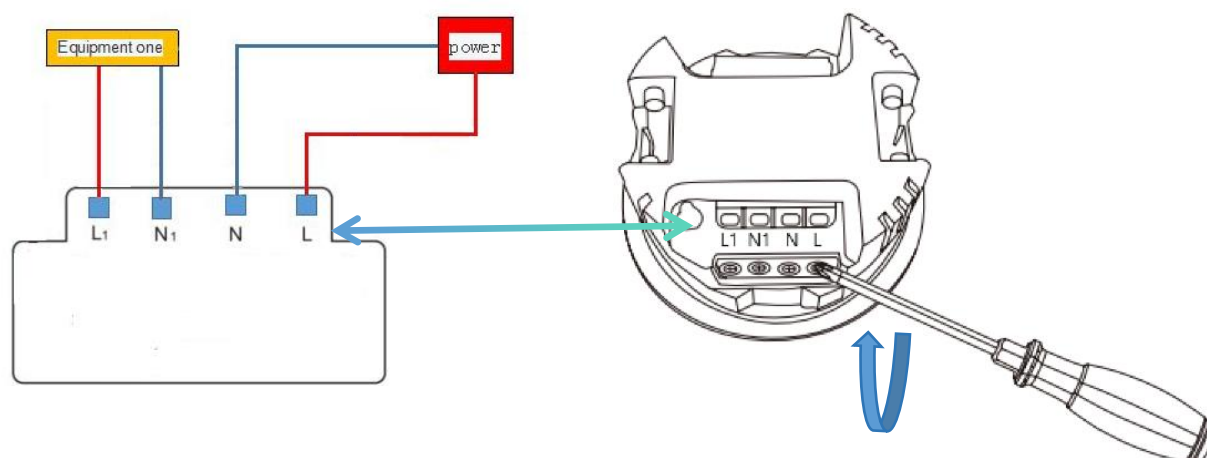
Fix the 86 junction box before installing the device



3. Wiring Diagram

Red: connect the fire line.

Blue: connecting Zero



L1	N1	N	L
Output Live	Output Neutral	Input Neutral	Input Live Wire
Wire	Wire	Wire	

4. Notes

(1) Installation Environment Requirements

This device must be installed in a suitable environment. Using it in the following conditions may affect detection effectiveness:

- The sensing area contains continuously moving non-human objects, such as pets, constantly swinging curtains, or plants positioned directly in front of air vents.
- When wall-mounted, consider external interference factors such as indoor air conditioners and ceiling fans, and ensure the sensor is mounted at least 1.5 meters above the ground.

Specification

Device Name: Wi-Fi Human Presence Sensor

Power: AC 95~250V 50/60Hz

Max Output Current: 2A

Detect Angle: 120°

Working Temperature: -10℃ ~ 60℃ (14° F~140° F)

Working Humidity: 1% ~ 85%RH(Non-condensing)

Max Detection Distance: 6M

Status Indicator: One LED light

Bluetooth Version: Bluetooth 5.0

Wireless Distance: 45M

Wireless Standard: IEEE 802.11b/g/n

Device and Indicator Status

Device Status	LED States
Indicator light flashing	Indicator light is red
Reset	Press and hold the reset button for 6s
After joining the network	LED light off

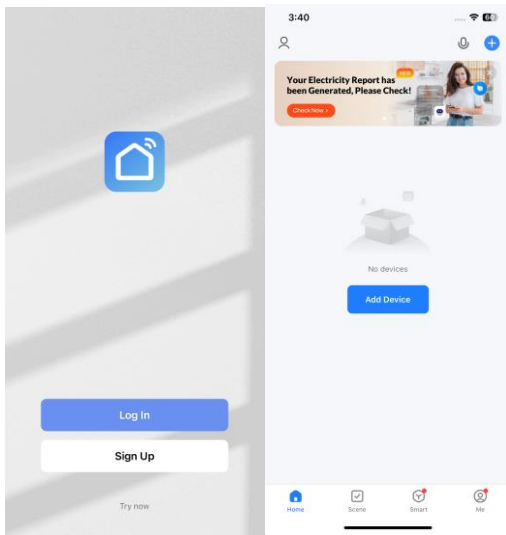
Download APP

1. Android: Download “Smart Life” APP from Google play store;

Ios: Download “Smart Life” APP from Apple Store;



2. Run app, register and log in the account

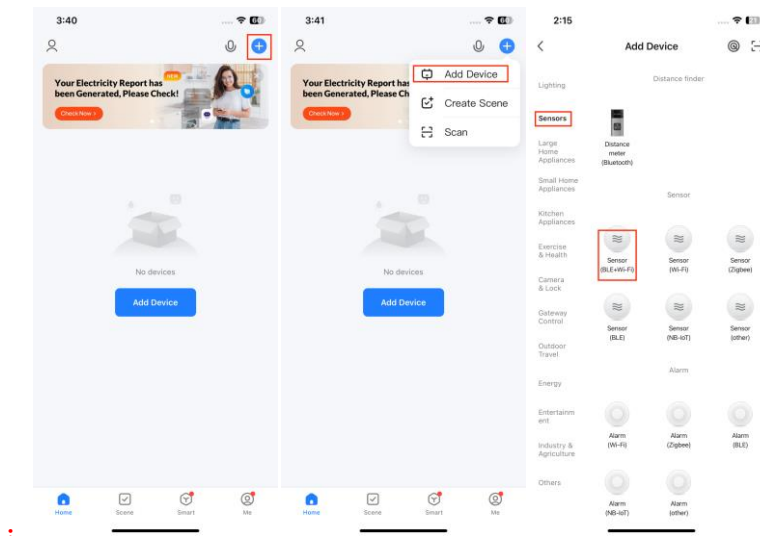


Add Devices

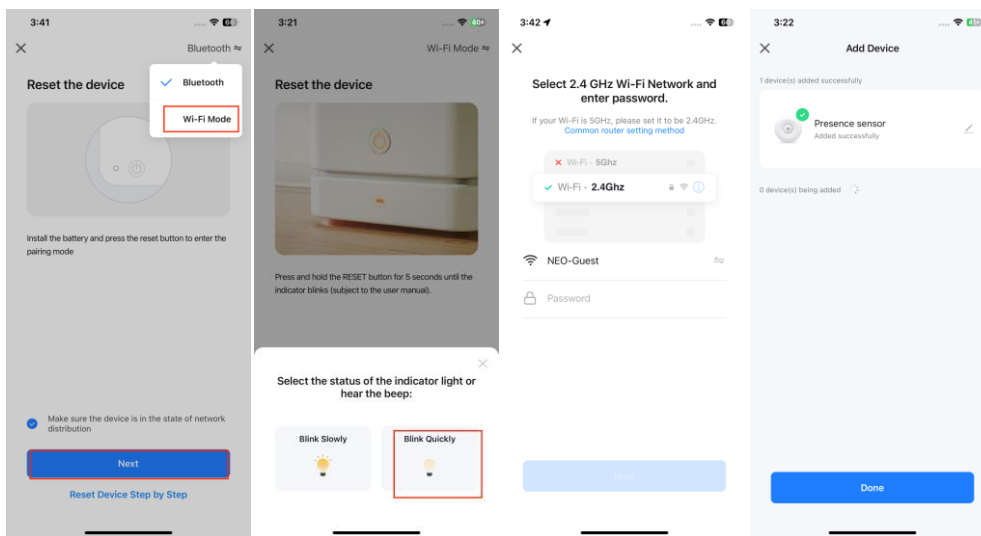
When powered on, the device defaults to WiFi mode (indicator light flashes rapidly). If the indicator light is off, please press and hold the reset button for 5-7 seconds, then select the corresponding mode of the indicator light to add the device.

1. Select the device type to add

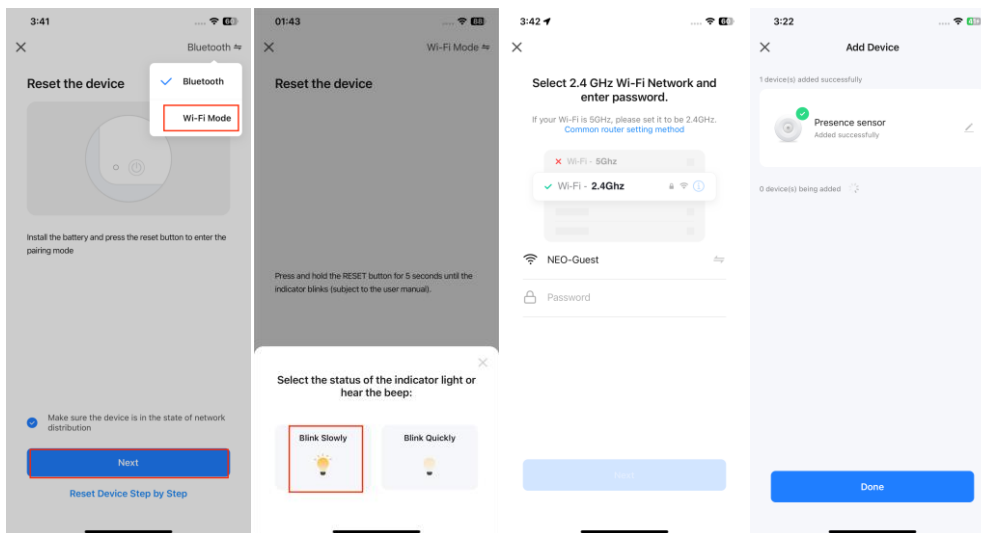
Note: All Wi-Fi devices can choose any Wi-Fi option for adding, but the device only supports 2.4GHz Wi-Fi signals.



- (1) Press the reset button until the device enters rapid flashing mode (Smart Wi-Fi Mode), then proceed to add the device (please follow the prompts in the app);

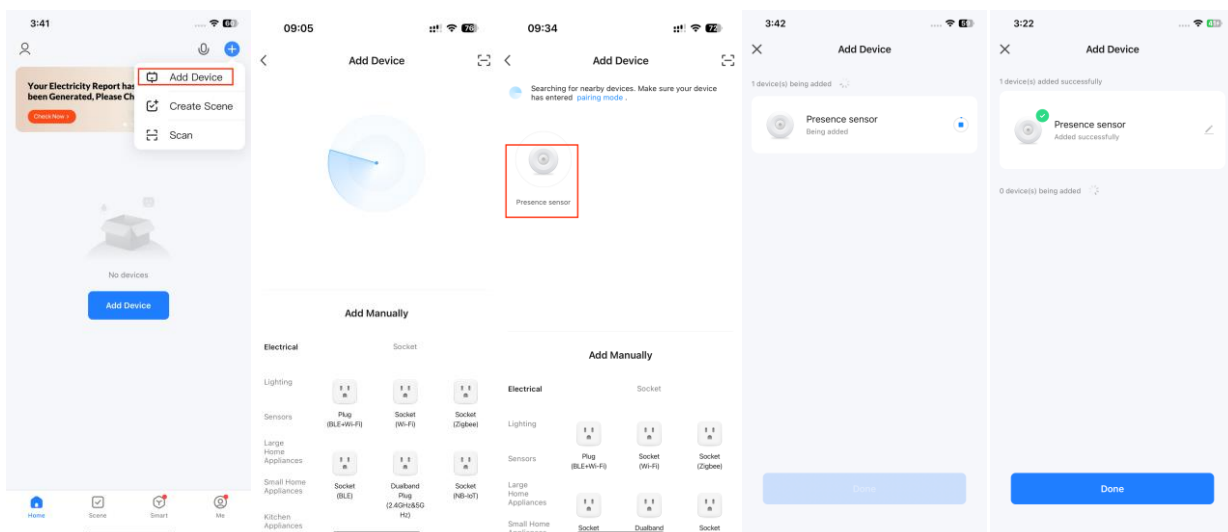


(2) Press the reset button until the device enters slow flashing mode (AP Mode), then proceed to add the device (please follow the prompts in the app).

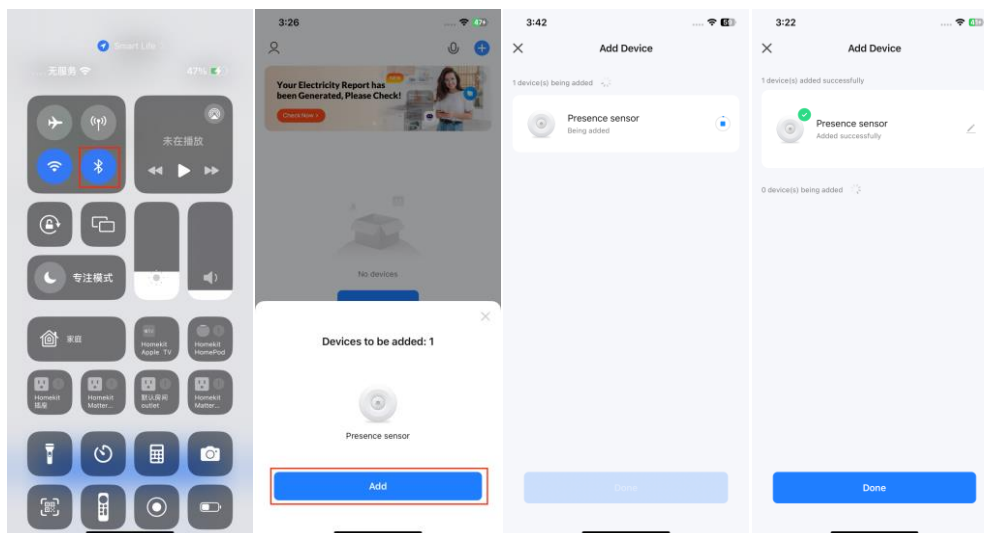


2. Bluetooth Adding

(1) Method 1: Open Bluetooth on your cell phone to add devices via Bluetooth mode;

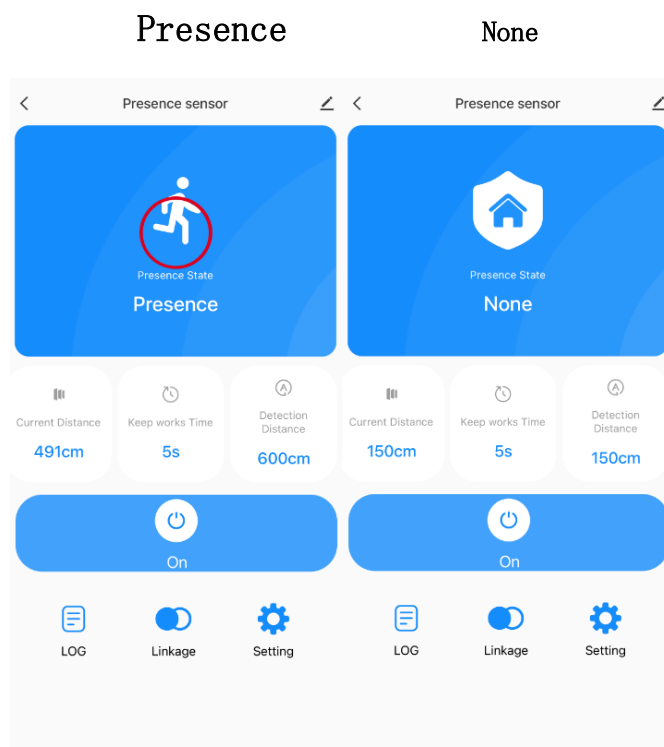


Method 2: After opening the Bluetooth, enter the APP interface device will be automatically searched out by Bluetooth, and then click to add can be.

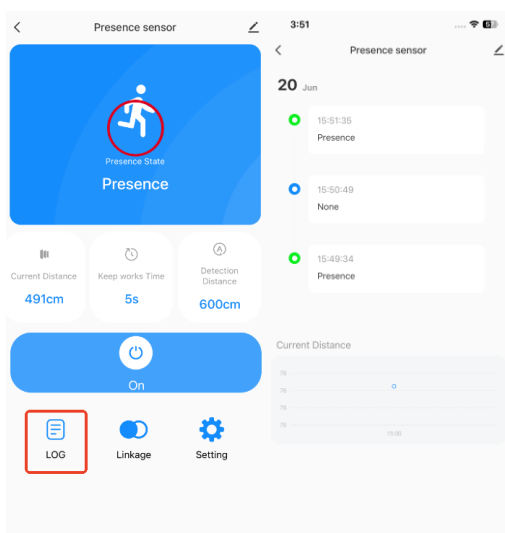


Functions and Settings

1. APP main interface

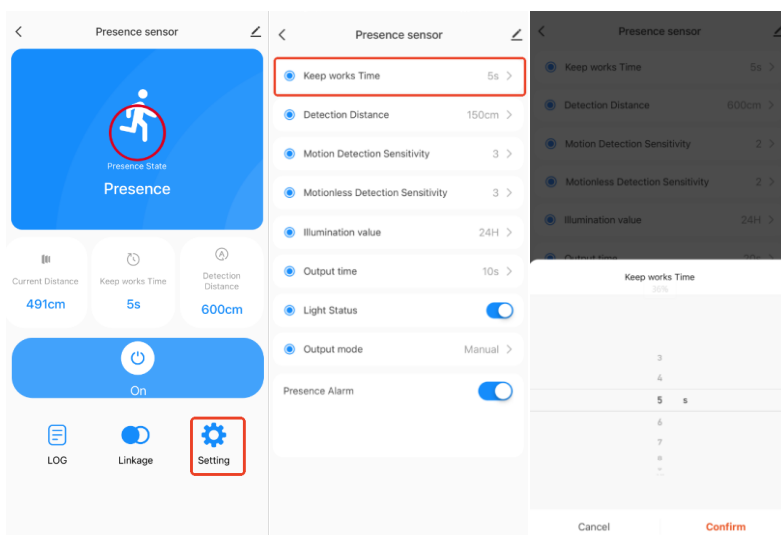


2. History Records

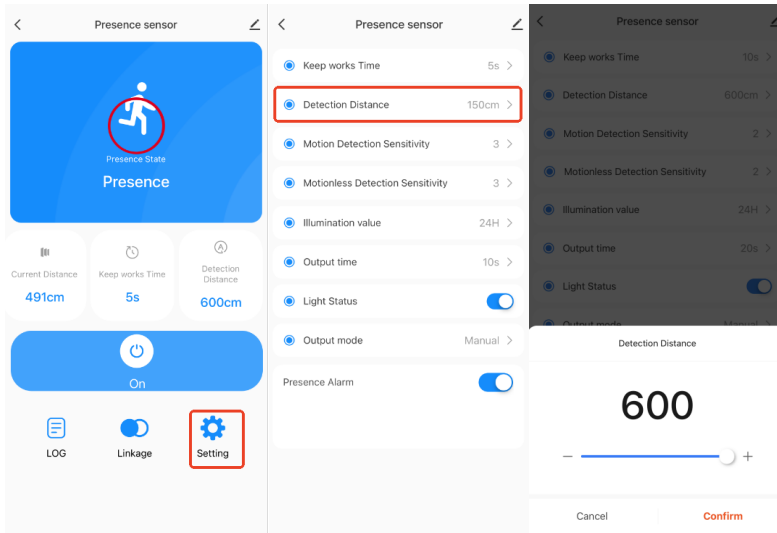


3. Parameters Setting

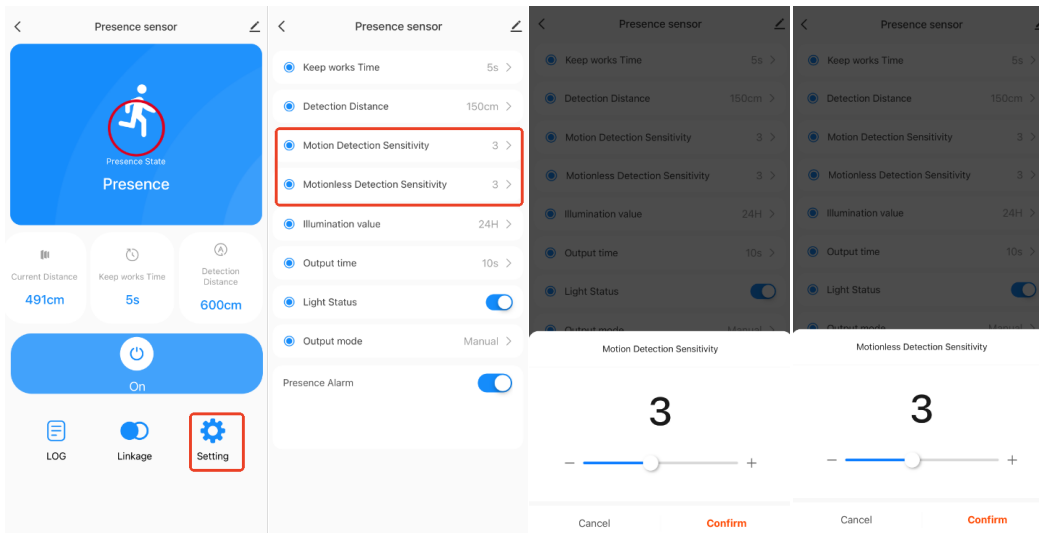
(1) Presence hold time (the duration the device remains active after detecting a person, with a setting range of 3s to 10s).



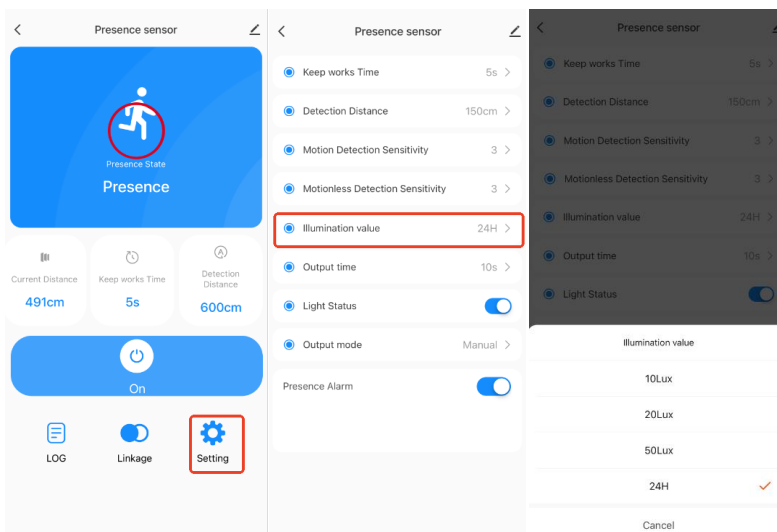
(2) Motion detection maximum distance (setting range: 150 cm to 600 cm).



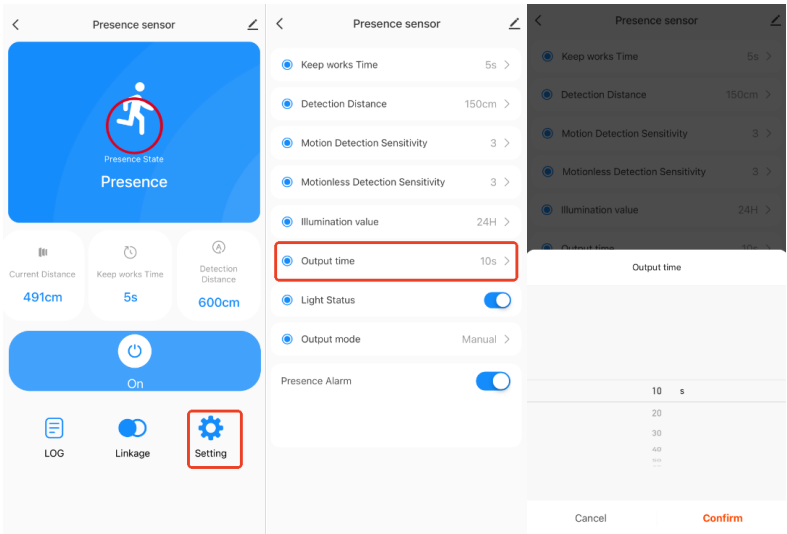
(3) Motion detection sensitivity and micro-movement detection sensitivity (setting range: 0 to 7)



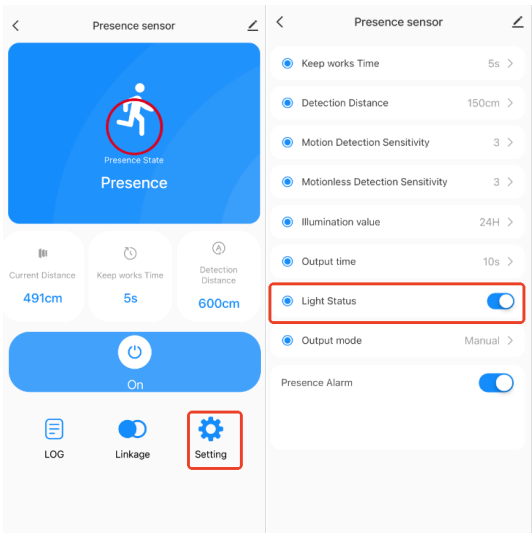
(4) Light value (can be set to 10 lux, 20 lux, 50 lux, or 24h; the output switch will be activated when the light value is equal to or less than the set value).



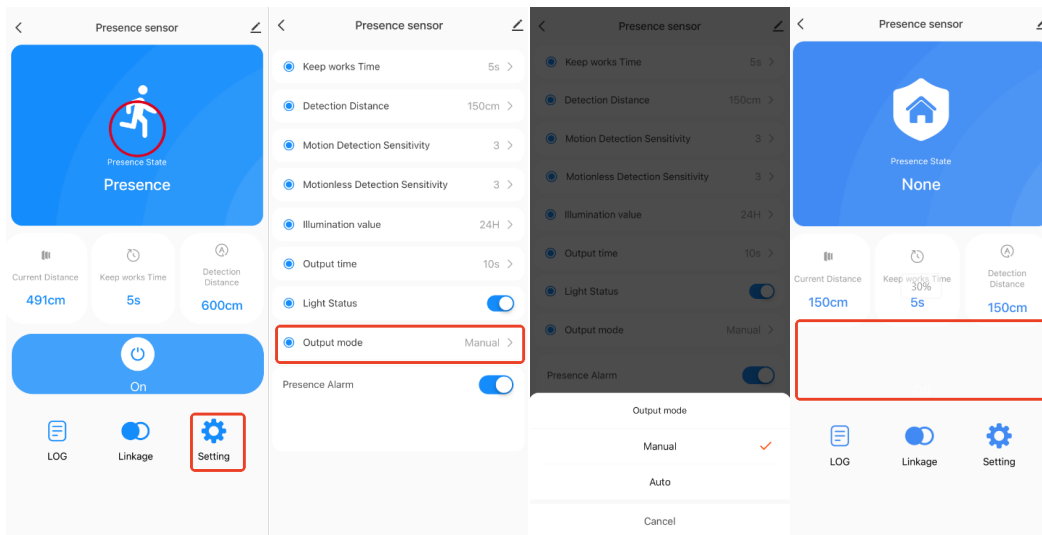
(5) Output duration (setting range 10s-1800s; by setting the output duration, control the time when the output switch is opened)



(6) Status indicator (can be set to indicator on or indicator off);

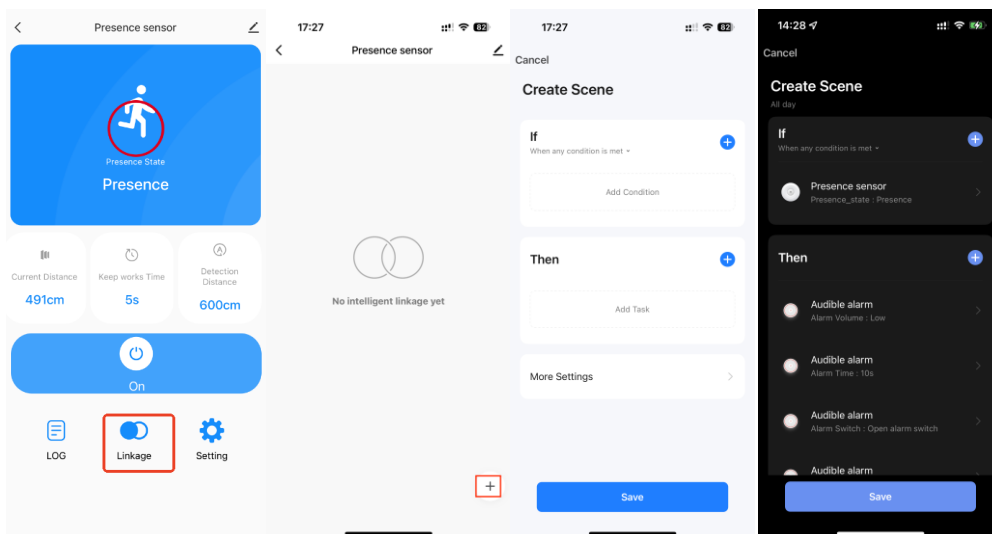


(7) Output mode (manual mode means the main interface controls the output switch, automatic mode means the device controls the output switch by automatically detecting whether someone or no one is present, the main interface button will disappear in automatic mode);



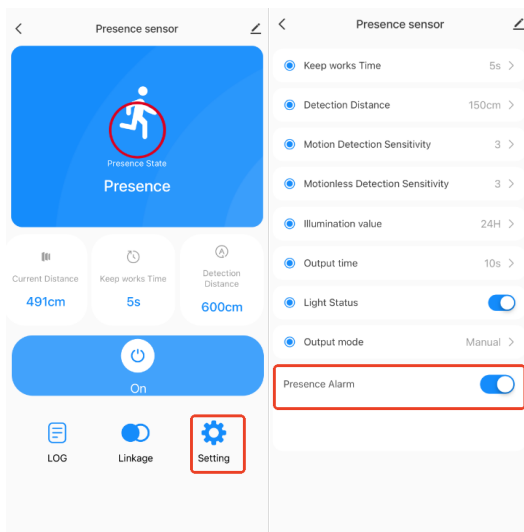
Other Functions

1. Scene linkage (e.g., when the presence sensor detects a person, it triggers the sound and light alarm to activate for a duration of 10 seconds).

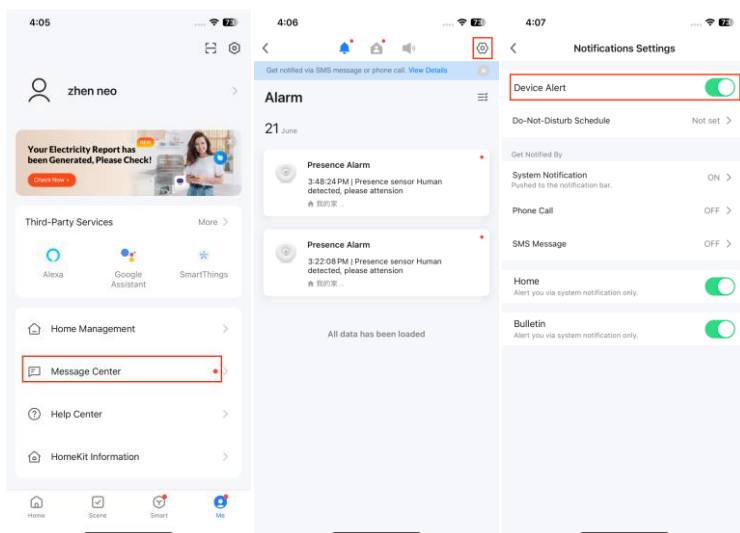


2. 推送管理 Push Management

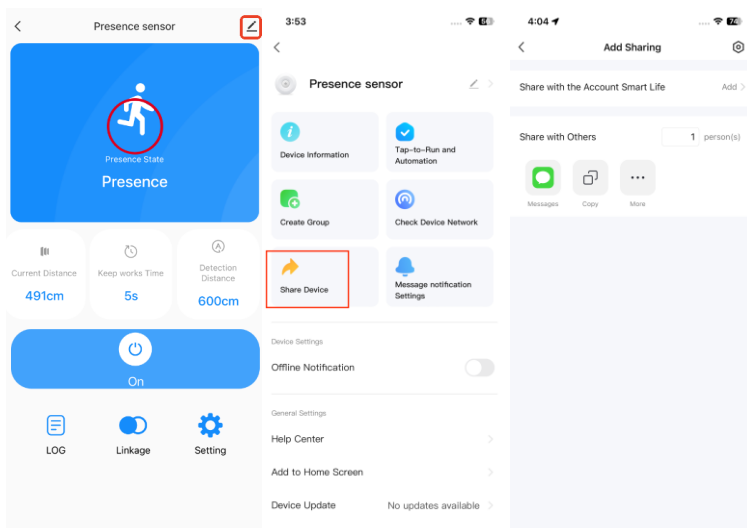
(1) Device Push: Turn off push here, the message log will still exist, but you won't receive the push pop-up message;



(2) All app notifications: Turning off notifications here will prevent all devices in the app from receiving push notifications, but it will not affect message history.

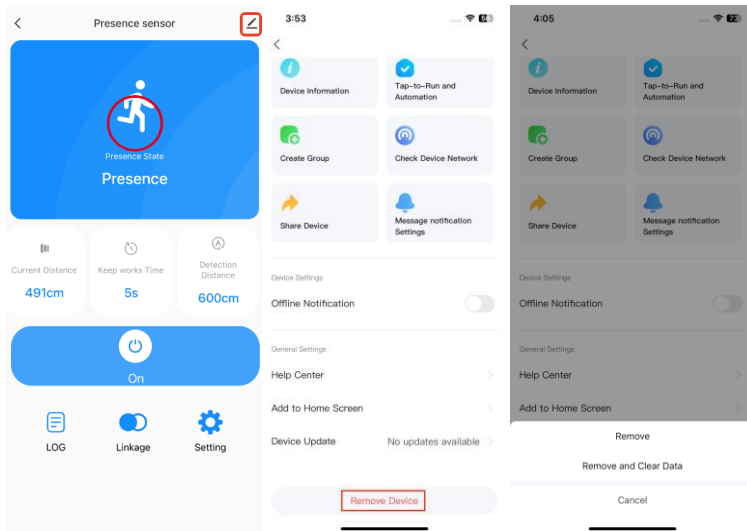


3. Share Device



4. Clear Records

Delete the device through the app, and then re-add the device to clear the historical records.



FAQ

- 1、 **Q: How to deal with the false alarm problem of the human presence sensor?**
 - A: False alarms may be caused by environmental factors (such as animals, wind movement, etc.). Adjusting the sensor's sensitivity or changing its installation location can often effectively reduce false alarms.
- 2、 **Q: Is the human presence sensor easily affected by light sources?**
 - A: Yes, intense lighting (such as direct sunlight or bright lamps) can interfere with the sensor. It is recommended to avoid installing the sensor near these light sources.
- 3、 **Q: What obstacles should be avoided during use?**
 - A: Such as pets, constantly swinging curtains, or plants positioned directly in front of air vents. To ensure optimal detection performance. Obstacles may impact the sensor's detection range and sensitivity.

This device complies with part 15 of the FCC Rules. Operation is subject to the following two conditions: (1) this device may not cause harmful interference, and (2) this device must accept any interference received, including interference that may cause undesired operation.

Any changes or modifications not expressly approved by the party responsible for compliance could void the user's authority to operate the equipment.

NOTE: This equipment has been tested and found to comply with the limits for a Class B digital device, pursuant to Part 15 of the FCC Rules. These limits are designed to provide reasonable protection against harmful interference in a residential installation. This equipment generates, uses and can radiate radio frequency energy and, if not installed and used in accordance with the instructions, may cause harmful interference to radio communications. However, there is no guarantee that interference will not occur in a particular installation.

If this equipment does cause harmful interference to radio or television reception, which can be determined by turning the equipment off and on, the user is encouraged to try to correct the interference by one or more of the following measures:

- Reorient or relocate the receiving antenna.
- Increase the separation between the equipment and receiver.
- Connect the equipment into an outlet on a circuit different from that to which the receiver is connected.
- Consult the dealer or an experienced radio/TV technician for help.

The device has been evaluated to meet general RF exposure requirement. The device can be used in portable exposure condition without restriction

-