

System Check: Head 835MHz

Exposure Conditions

Phantom Section, TSL	Position, Test Distance [mm]	Band	Group, UID	Frequency [MHz], Channel Number	Conversion Factor	TSL Conductivity [S/m]	TSL Permittivity	Ambient Temperature [°C]	Liquid Temperature [°C]
Flat, HSL		CD835	CW, 0--	835.0, 50	10.25	0.905	42.6	22.1	21.2

Hardware Setup

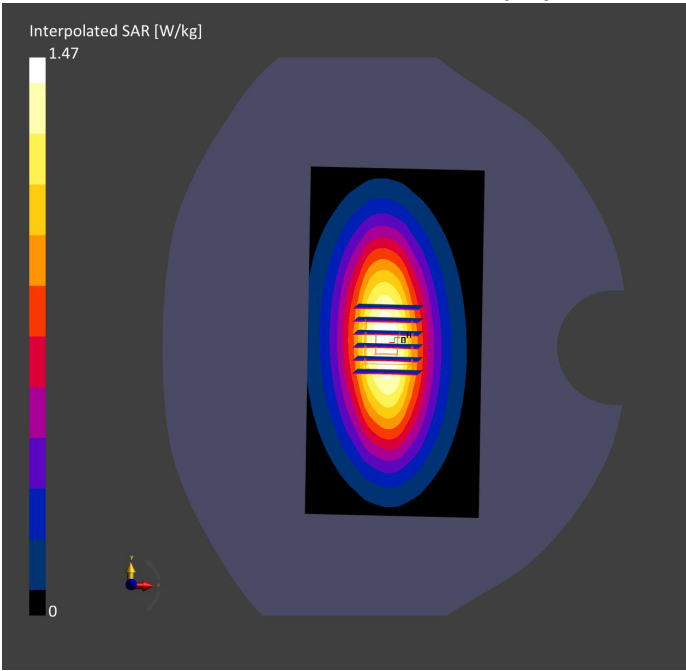
Phantom	TSL, Measured Date		Probe, Calibration Date	DAE, Calibration Date
Twin-SAM V5.0 (30deg probe tilt) - 1859	HBBL-600-10000	2025-07-27	EX3DV4 - SN7664, 2025-06-30	DAE4 Sn1710, 2025-01-20

Scan Setup

	Area Scan	Zoom Scan
Grid Extents [mm]	80.0 x 160.0	30.0 x 30.0 x 30.0
Grid Steps [mm]	10.0 x 10.0	6.0 x 6.0 x 1.5
Sensor Surface [mm]	3.0	1.4
Graded Grid	Yes	Yes
Grading Ratio	1.5	1.5
MAIA	N/A	N/A
Surface Detection	VMS + 6p	VMS + 6p
Scan Method	Measured	Measured

Measurement Results

	Area Scan	Zoom Scan
Date	2025-07-27	2025-07-27
psSAR1g [W/kg]	0.917	0.968
psSAR10g [W/kg]	0.621	0.633
Power Drift [dB]	-0.01	-0.05
Power Scaling	Disabled	Disabled
Scaling Factor [dB]		
TSL Correction	No correction	No correction
M2/M1 [%]		84.3
Dist 3dB Peak [mm]		12.8



System Check: Head 2450MHz

Exposure Conditions

Phantom Section, TSL	Position, Test Distance [mm]	Band	Group, UID	Frequency [MHz], Channel Number	Conversion Factor	TSL Conductivity [S/m]	TSL Permittivity	Ambient Temperature [°C]	Liquid Temperature [°C]
Flat, HSL		D2450	CW, 0--	2450.0, 50	7.80	1.83	38.7	22.3	21.3

Hardware Setup

Phantom	TSL, Measured Date		Probe, Calibration Date	DAE, Calibration Date
Twin-SAM V5.0 (30deg probe tilt) - 1859	HBBL-600-10000	2025-07-28	EX3DV4 - SN7664, 2025-06-30	DAE4 Sn1710, 2025-01-20

Scan Setup

	Area Scan	Zoom Scan
Grid Extents [mm]	80.0 x 80.0	30.0 x 30.0 x 30.0
Grid Steps [mm]	10.0 x 10.0	5.0 x 5.0 x 1.5
Sensor Surface [mm]	3.0	1.4
Graded Grid	Yes	Yes
Grading Ratio	1.5	1.5
MAIA	N/A	N/A
Surface Detection	VMS + 6p	VMS + 6p
Scan Method	Measured	Measured

Measurement Results

	Area Scan	Zoom Scan
Date	2025-07-28	2025-07-28
psSAR1g [W/kg]	5.23	5.29
psSAR10g [W/kg]	2.22	2.38
Power Drift [dB]	-0.02	-0.06
Power Scaling	Disabled	Disabled
Scaling Factor [dB]		
TSL Correction	No correction	No correction
M2/M1 [%]		80.8
Dist 3dB Peak [mm]		8.9

