

Quick Setup guide

For detailed step-by-step guide:



Scan this QR code or follow the link below to find our guide on how to set up your new station.

<https://welcome.weatherxm.com>

1 Check the box contents

Weather Station
SKU: WS1300

WiFi Gateway
SKU: WG1200

Included:

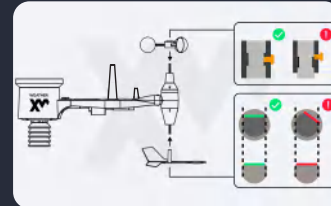
- | | |
|--------------------------|------------------------------|
| 1. Weather station | 9. Screwdriver |
| 2. Wind cups | 10. USB-C power supply cable |
| 3. Wind vane | 11. Zip ties |
| 4. Metal plate | 12. Bird Spikes |
| 5. U-bolts (x2) | |
| 6. Nuts (x4) | |
| 7. Wrench | |
| 8. External Battery Pack | |

Not included

1. Batteries 1.5V not rechargeable (x8 AA)
2. Metal mounting pole (recommended pole with max diameter 50mm/2in & at least 2m/6.5ft height)
3. Tools and parts to secure the pole
4. USB power supply

2 Assemble and install the weather station

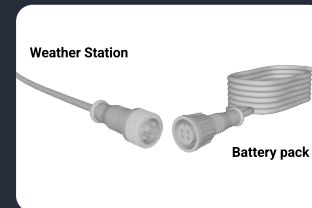
1. Assemble the wind sensor



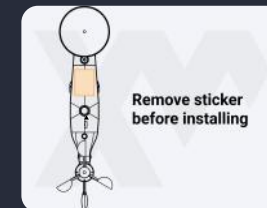
2. Install the battery pack to the station



3. Connect the battery pack to the station



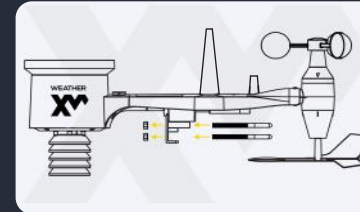
4. Remove sticker



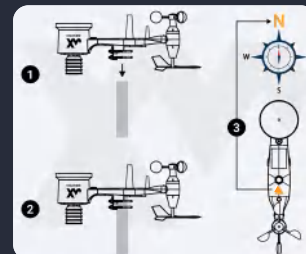
5. Install the bird spikes



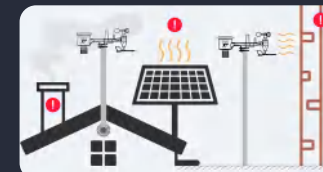
6. Install U-bolts and metal plate



7. Mount on the metal pole



8. Place it where there's no heat sources and shadowed areas



3 Connect to the Gateway and claim your station

1. Download the WeatherXM app

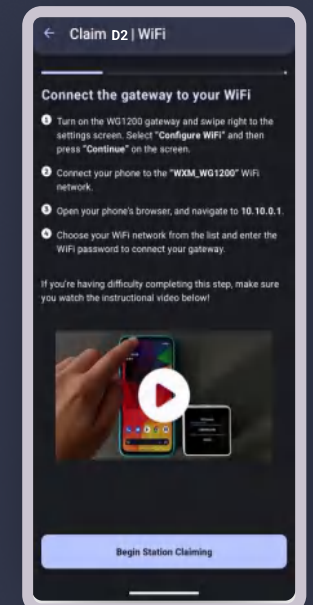
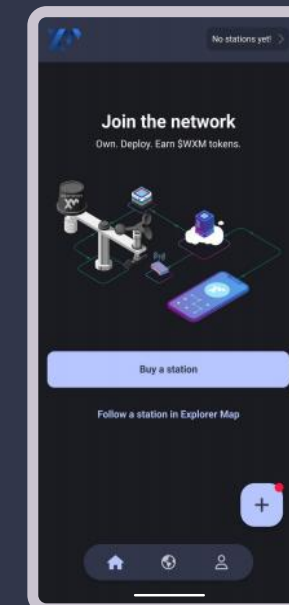


Scan this QR code to download the WeatherXM app from Google Play Store and App Store

2. Connect WG1200 Gateway to WiFi



3. Login, tap the "+" button and follow the instructions



Product Name:	WeatherXM Weather Station
Product Model:	WB1210、WS1300、WS2300
Input Voltage:	3V/150mA MAX (two series AA batteries)
RF Support:	Bluetooth、LoRa、GNSS
Bluetooth:	BLE 5.2
Operating Temperature	-40℃ to 60℃

FCC Warning

This device complies with part 15 of the FCC Rules. Operation is subject to the following two conditions:

(1) This device may not cause harmful interference, and (2) this device must accept any interference received, including interference that may cause undesired operation.

Any Changes or modifications not expressly approved by the party responsible for compliance could void the user's authority to operate the equipment.

Note: This equipment has been tested and found to comply with the limits for a Class B digital device, pursuant to part 15 of the FCC Rules. These limits are designed to provide reasonable protection against harmful interference in a residential installation. This equipment generates uses and can radiate radio frequency energy and, if not installed and used in accordance with the instructions, may cause harmful interference to radio communications. However, there is no guarantee that interference will not occur in a particular installation. If this equipment does cause harmful interference to radio or television reception, which can be determined by turning the equipment off and on, the user is encouraged to try to correct the interference by one or more of the following measures:

- Reorient or relocate the receiving antenna.
- Increase the separation between the equipment and receiver.
- Connect the equipment into an outlet on a circuit different from that to which the receiver is connected.
- Consult the dealer or an experienced radio/TV technician for help.

This equipment complies with FCC radiation exposure limits set forth for an uncontrolled environment. This equipment should be installed and operated with minimum distance 20cm between the radiator & your body.