

# Specification

Bluetooth connectivity
Battery Requirement: AAA*4 ( Battery included)
Dimensions: 32.5(W)x 32.5(W)x 2.5 (D)cm
Weight: 4.5kg

## Caution & Important Notes

Please read these before use



Do not expose the product to fire or close to high temperature



Stop using if found liquid leakage, overheating or any other unusual conditions



Do not expose the product to water or high humidity



Green power, great recycle using

Customer Service  
<http://ozakiverse.com/>



# Limited One (1) Year Warranty Information

**Warranty Coverage**  
OZAKI's warranty obligations are limited to the terms set forth below: OZAKI warrants this OZAKI hardware product against defects in design, workmanship and materials under normal use for a period of ONE (1) YEAR from the date of the original user purchase ("Warranty Period"). Accessories accompanying with this product are not covered. This ("Warranty Period"). Accessories accompanying with this product are not covered. This notice.

**Repair and replacement**  
The maximum liability of this OZAKI hardware product shall not exceed the purchase price paid by the original purchaser. The original purchaser shall without undue delay notify OZAKI of any defect which appears according to OZAKI's Policy, failure to which shall mean that the purchaser waives its right to have the defect remedied. A valid form of a bill of sale or receipt from an authorized retailer/distributor with date of the original purchase must be presented to obtain warranty service. If a valid claim is received within the Warranty Period, the sole remedy of the original purchaser and OZAKI's sole and exclusive liability shall be limited to, at OZAKI sole discretion, either repair of the hardware defect using new or refurbished replacement parts, or replacement of the product. Repaired or replacement hardware will be warranted for the remainder of the original Warranty Period or thirty (30) days, whichever is longer. When a product or part is exchanged, the replacement hardware becomes the property of the original purchaser and all hardware or part thereof that is replaced shall become the property of OZAKI.

**Exclusions and Limitations**  
This warranty does not apply: (a) to faulty and improper installation, maintenance, service, repair and/or alteration in any way that is not contemplated in the documentation for the product or canted out with OZAKI's consent in writing, operational adjustments covered in the operating manual for the product or normal maintenance, (b) to cosmetic damages, (c) if the product is modified or tampered with, (d) to damage caused by acts of God, misuse, abuse, negligence, accident, normal wear and tear and deterioration, improper environmental conditions (including, but not limited to, electrical surges, water damage and/or heat/cold/chemical exposure) or lack of responsible care, (e) if the product has had the model or serial number altered, defaced or removed, (f) to consumables (such as batteries), (g) to products that have been purchased 'as is' and OZAKI, the seller or the liquidator expressly disclaim their warranty obligation pertaining to the product, (h) to any non-OZAKI hardware product or any software (irrespective of packaged or sold with an OZAKI hardware product) and OZAKI products purchased from an unauthorized distributor/reseller, (i) to damage that occurs in shipment or (j) to damages by any other causes not related to defective design, workmanship and/or materials, (k) cracked or broken cabinets, or units damaged by excessive heat.

**Warranty Service**  
The Limited Warranty is applicable in all countries and may be enforced by contacting OZAKI Support worldwide. For questions and supports, please visit: [ozakiverse.com/support](http://ozakiverse.com/support)

**Legal Statement**  
The information provided along with this product & its APP, either those input by the user and represented by the APP, or related information accessible in the APP or introduced by this product, are popular science information issued from relatively reliable research institution, such as Institute of Medicine and National Research Councils of the National Academies, which must not be deemed or used as a diagnosis for health or a substitute for professional medical assessments or advices. If the User or the pregnant woman that the User records has any questions or any long lasting, pregnancy-related and/or special health issues, please look for consultation and support from professional medical doctors and institutions.

Users of this product do so exclusively at their own risk. This also applies without limitation to any use by the user of data created or provided from the product and its APP, including but not limited to (i) measured data (varied by product functions, e.g. weight, pulse, etc.), or (ii) recommendations for actions (e.g., exercise reminders etc.). The user explicitly acknowledges that any such data or content may contain errors, and Ozaki does not, to the extent permitted by law, assume any responsibility for the correctness of such data. At no circumstance should Ozaki or its associates, dealers or agents, assume the entire liability, cost of repair, correction or any payment or other remedy for the misuse or abuse of this product. Ozaki reserves the right to revise this publication and to make changes from time to time for the contents hereof without obligation or prior notice for the changes.

## FCC Statement

**Interference Information**  
This equipment has been tested and found to comply with the limits for a Class B digital device, pursuant to Part 15 of FCC Rules. These limits are designed to provide reasonable protection against harmful interference in a residential installation. This equipment generates, uses, and can radiate radio frequency energy and, if not installed and used in accordance with the instructions, may cause harmful interference to radio communications. However, there is no guarantee that interference will not occur in a particular installation. If this equipment does cause harmful interference to radio or television reception, which can be determined by turning the equipment off and on, the user is encouraged to try to correct the interference by one or more of the following measures:  
• Reorient or relocate the receiving antenna  
• Increase the separation between the equipment and receiver  
• Connect the equipment into an outlet on a circuit different from that to which the receiver is connected  
• Consult the dealer or an experienced radio/TV technician for help  
This device complies with Part 15 of the FCC Rules. Operation is subjected to the following two conditions: (1) this device may cause harmful interference, and (2) this device must accept any interference received, including interference that may cause undesired operation.  
• This equipment complies with FCC radiation exposure limits set forth for an uncontrolled environment.  
• This transmitter must not be co-located or operating in conjunction with any other antenna or transmitter.  
**WARNING:**  
Changes or modifications to this unit not expressly approved by the party responsible for compliance could void the user's authority to operate the equipment.

English Version

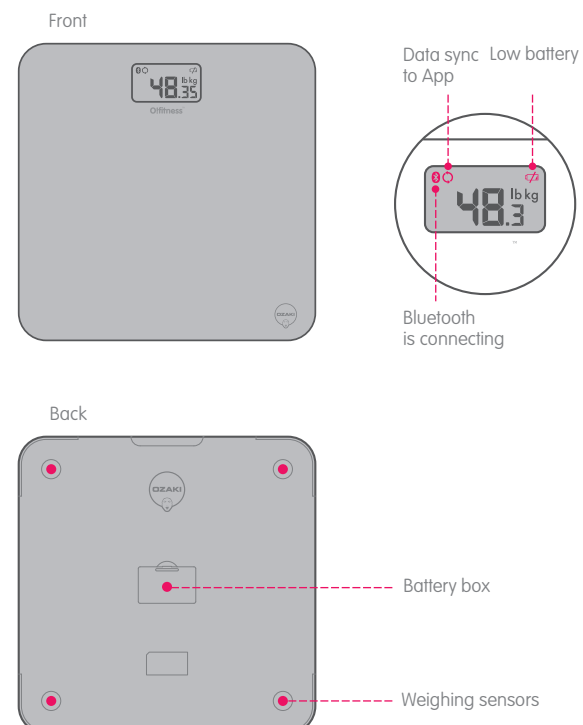


## My Pregnancy Days User Manual

O!fitness My Pregnancy Days

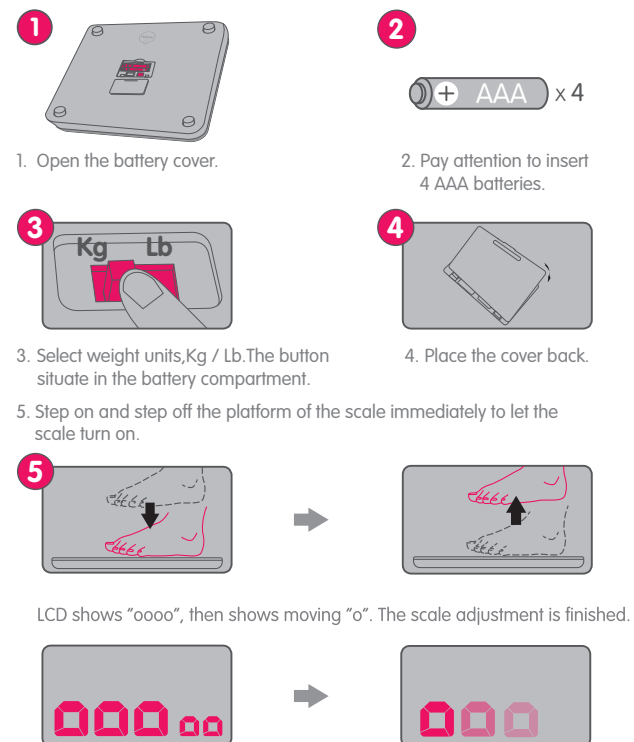


## Hardware



### A: Set up the scale

Use the scale for the first time or replacing the batteries. You need to adjust the scale.

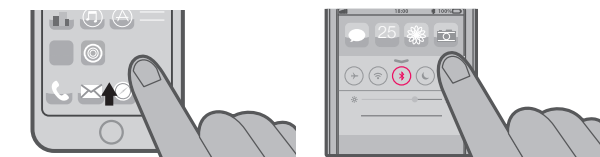


### B: Pair your scale with your iPhone®/iPad®

#### 1. Download App



#### 2. Turn on the bluetooth



#### 3. Turn on My Pregnancy Days App.



#### 4. Follow the instruction in app to set your personal information.

## FAQ & Warming

### Something wrong with my scale?

- The Scale does not respond**
- Check if the batteries are inserted correctly?
  - Check the batteries is sufficient or not?
- Number keep flashing or the scale cannot measure my weight**
- The current weight may be under or beyond the measurement range of 10kg~180kg
  - Check if the scale is placed on solid and flat ground.
  - Try to stand on the scale stably.
  - You should stand on the scale directly. **NOT TAP ON.**
- Cannot connect or sync data to my iOS devices**
- Check if the bluetooth of your iOS devices is turn on.
  - Keep the iOS devices with 2m from the scale
  - Make sure Scale is powered on, and bluetooth icon is flashing.

### How to clean my scale?

1. Find an old brush and clothes.
2. Brush the surface
3. Wipe the scale with wet clothes.

### Anything else I should pay attention to?

- This product is not suitable for pregnant women with twins or more.
- The scale data must be considered purely as reference values and not as a medical opinion.
- Do consult the health care provider if there's any medical issues and follow the advise from your health care provider even it is different from the information My pregnancy days provide.
- Do not use the scale on a wet floor or with wet feet.
- Do not stand on the edges of the scale.
- 240 times means 8 times for one day and 30 days. One day, you measure 9 times, the weight scale will delete the first time weight data and so on. You need to sync datas during 30 days, if you forget to sync, the weight scale will delete the first day and so on.



<http://m.ozakiverse.com/ofitness-my-pregnancy-days/services>

