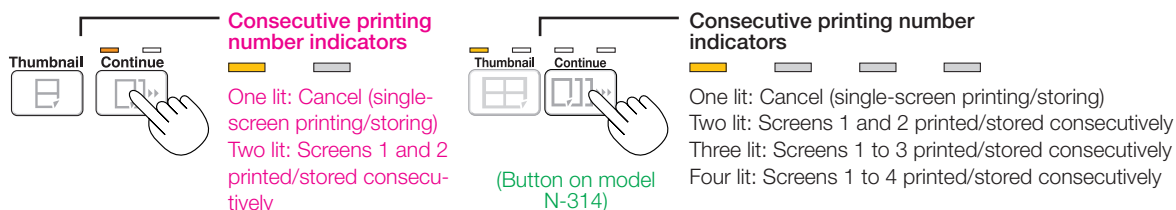


Consecutive Printing

Multiple screens from the screen at the current position can be printed (or stored).

1. Press the Continue button and select the number of screens.





The mode switches in the following order each time the button is pressed.

Screens 1 and 2 → Cancel ...

(Screens 1 and 2 → Screens 1 to 3 → Screens 1 to 4 → Cancel ... on model N-314)

The number of consecutive screens is indicated by the number of consecutive printing number indicators that are lit yellow. ("CP" is displayed on the display window when consecutive printing is selected.)

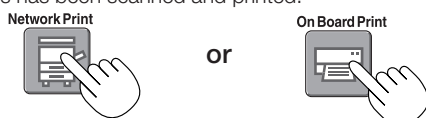
* The screens are counted in order from the currently visible screen as **screen 1 and screen 2** (screen 1, screen 2, screen 3, and screen 4 on model N-314). To start from a particular screen, press the Scroll/Stop  or  button to scroll to that screen.

Notice

- Note that if you have drawn on the sheet after moving it manually part way or after stopping scrolling in the middle, the amount of movement for one screen's worth changes, so the position of the scanned images will be substantially off.
- This product uses an endless sheet. Note that the position of the scanned images may go slightly off due to stretching of the sheet or slippage.

2. Press **Network Print** or **On Board Print** button to print.

When one of the print buttons is pressed, the screens are scanned and printed repeatedly until the specified number of screens has been scanned and printed.



When printing is finished, consecutive printing is canceled.

Note

- If there is a blank screen in the specified sequence, that screen is printed as a blank.
- If the ON/Standby button is pressed during scanning, scanning is interrupted and only the images that have been scanned are printed.
- If printing of multiple copies has been specified (with the Number of Copies button), after scanning, the specified number of copies is printed, and this is repeated until the specified number of screens has been scanned and printed.

Changing Printing Color

Printing color can be selected between color and monochrome.

1. Press the Color / B/W button to select color or monochrome.



The Color Print status indicator lights to indicate the following condition:

Lit green: Color print

Off: Monochrome print

Note

- If "Color Print" in CB Setup is set to "Invalid", a press of the Color / B/W button will select forcibly monochrome color. To select "Valid" for "Color Print" in CB Setup, see page E-26 in "CB Setup (Operating the Network Board's Buttons)".

Using USB Memory

The content of what has been drawn on the sheet surface of the **network board** can be saved in USB memory. Later, the saved image can be read into a personal computer and made into a document of the proceedings of the meeting, or affixed to a document.

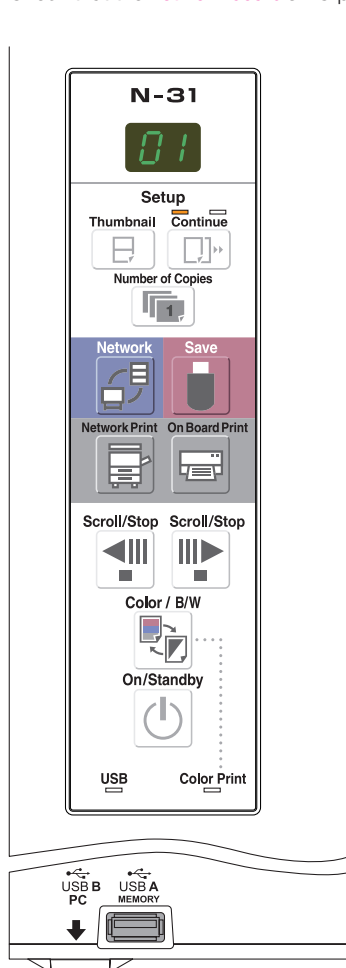
Notice

- No USB flash memory device is included. When purchasing a USB flash memory device, pay attention to the following:
 1. USB flash memory devices formatted in FAT16/FAT32 are supported. USB flash memory devices in NTFS format cannot be used.
 2. USB flash memory devices protected by a security function cannot be used.
 3. USB flash memory devices with a capacity of over 32 GB cannot be used.
 4. If the USB flash memory device is divided into multiple partitions, only one partition can be recognized with this unit.

USB Memory Storage Procedure

Preparation:

Check that the **network board**'s AC power plug is connected to a wall power outlet.



1

Press the **ON/Standby** button and switch on the power.



Note

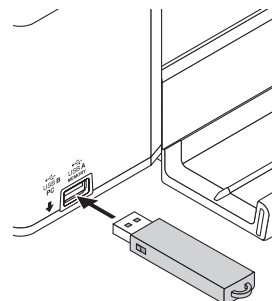
- When turning on the power, wait about 5 seconds or more after the power plug has been connected before pressing the ON/Standby button.
- Press the ON/Standby button to switch on the power. The LED of the display window will light.

2

Insert the USB memory device into the **USB A Memory** port of the **network board**.

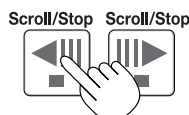
Notice

- Check the side (polarity) of the USB memory device before inserting it. Forcing it in the reverse orientation will damage the USB A Memory port or USB memory device.
- Be careful not to bump into the USB memory device with hand or body while it is mounted. Doing so could damage the USB memory device or USB A Memory port.



3

Press the **Scroll/Stop** button or **Scroll/Stop** button to display the screen to be stored.



The procedure for displaying the sheet surface you want to store is the same as for printing.

See "Basic Printing Operation" on page E-16.

Note

- The one screen portion that is viewable will be saved in USB memory.
- Saving of the portion located around the sheet surface might not be possible. Please see "Effective reading size" on Page E-5.

4

Press the **Save** button to store.



Display window

Flashing indicator “rotates” sequentially during USB memory storage operation.

- The reading operation is performed for a one-sheet portion (while the sheet is scrolled) and USB memory storage starts after the scrolling completes.
- **Multiple** screens can be stored consecutively. (See Page E-19, “Consecutive Printing”.)



The (5 second) flashing “US” display indicates that the USB memory has not been inserted. Please insert the USB memory and then press the **Save** button.



A (5 second) flashing “FL” display indicates that there is insufficient free capacity to permit storage in USB memory. Replace with a USB memory device having sufficient capacity. See “Meaning of Error Messages” on Page E-29 for other error displays.

Note

- Depending on the USB memory, it may take time for recognition or it may take time for saving.
- When the ON/Standby button is pressed during the reading operation, the reading operation will be discontinued and the partially read image data will be stored in the USB memory.
To move the sheet surface, stop scrolling, then press the **Scroll/Stop** button.
- The date and time of the saved file will reflect the **network board** time setting. See “Setting the Time” on Page E-13.
- When a certain amount of free capacity is not available in the USB memory, “FL” will be displayed when the **Save** button is pressed. Delete data, set the sheet surface back to the original status, then press the **Save** button again.
- When the **network board** and a computer are connected by USB cable, the data is stored in the main unit’s internal memory.

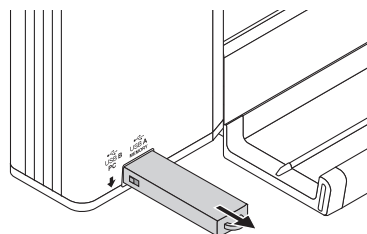
5

Removing the USB memory

Check that the flashing rotation of the display window has changed to steady lighting and that the USB memory access indicator is not flashing, then pull the USB memory straight out. (Please see your USB memory manual for details.)

Notice

- Do not unplug the USB memory device during the USB memory storage operation (i.e., during the rotating, flashing display in the display window), or while the access indicator of the USB memory device is flashing because data will be destroyed.



6

When the **network board** is not going to be used, press the **ON/Standby** button and switch off the power (standby mode).

On/Standby



Note

- “USB” letters appearing at one-second intervals in a moving display in the display window indicate that a USB memory device is mounted. Unplugging the USB memory device will switch off the power. (A function that serves as a reminder to unplug the USB memory device)
- When the **network board** and a computer are connected by USB cable, the auto power off function (which turns the power off automatically) is canceled.
- Scanned image files stored in the memory for computer storage are deleted when the ON/Standby button is turned off. Files in the memory for network storage are not deleted.

Saving Image Files on a Computer/Deleting Image Files

Examples of operations follow for saving the image files in the USB memory device to the hard disk of the personal computer, and for deleting the folder when the USB memory capacity is full. (There are various methods that can be used for saving and deleting including the use of Explorer.) See the instruction manual of your personal computer or the software that you are using for information about using a personal computer.

The name of the folder on the USB memory device is “CB_Image”. Image files are stored in this folder. By factory setting upon purchase, image files are named “PV-xxx.png” (PNG files), where “xxx” refers to a 3-digit number starting from 001 (ex.: PV-001.png).

When consecutive storing is performed, numbers “-1” or “-2” (“-1”, “-2”, “-3” or “-4” on model N-314) are added to the end of the file name. (Example: When three screens are stored consecutively - PV-001-1.png, PV-001-2.png.) When a file format is specified to PDF, consecutive stored files will be merged into one file.

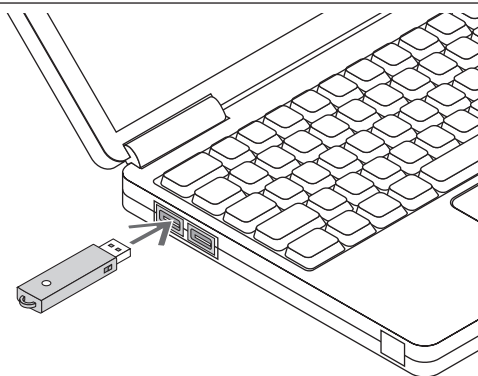
Images can be stored in JPEG, PNG or PDF format, selectable in the network board settings (“CB Setup”). (See pages E-26.)

1

Plug the USB memory device into a USB port of the personal computer

When connecting to the personal computer for the first time, the installation of a USB driver is required. Follow the instructions manual of the USB memory device that you are using.

- The standard driver is installed automatically and the network board is identified as “Removable disk” in “My Computer” (or “Computer”).



2

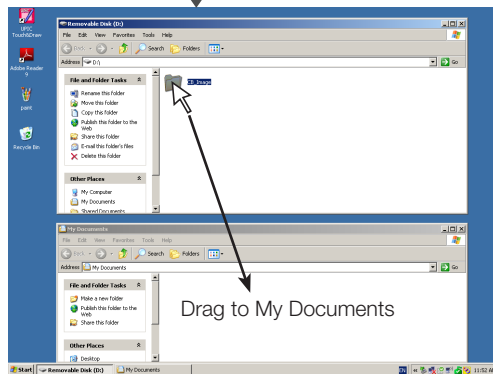
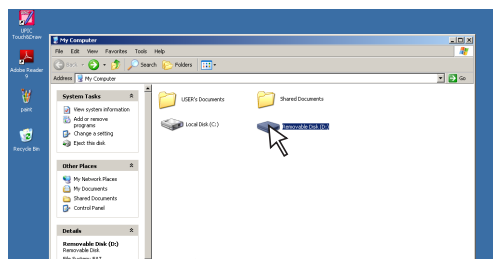
Saving the image files of a USB memory device to a personal computer

1. Open “My Computer” (or “Computer”) and from within, open the drive of the connected USB memory device.

The folder named “CB_Image” is the saved data of the network board.

2. Store the “CB_Image” folder in “My Documents” or another location.

All of the data contained in “CB_Image” will be stored.



Deleting USB memory image files with the computer

Before deleting important image files, be sure to save them on the computer (as a data backup).

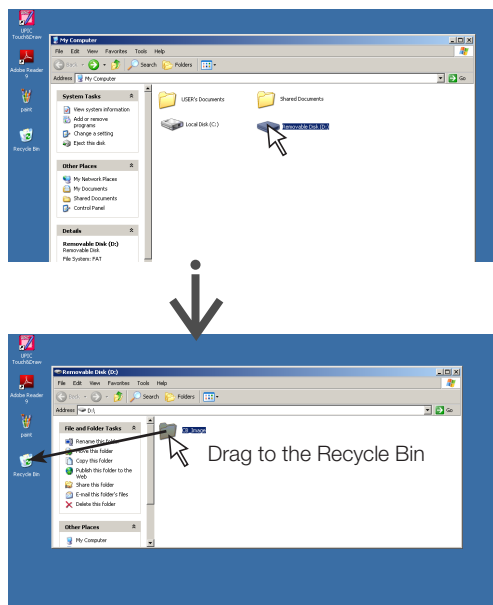
1. Open “My Computer (or “Computer”)” and then open the drive icon which shows USB memory.

The folder named “CB_Image” contains the memory storage data of the **network board**.

2. Place the “CB_Image” folder in the “Recycle Bin”, right click on the icon and select “Empty Recycle Bin” from the pull-down menu.

All of the data contained in “CB_Image” will be deleted.

Even when the entire folder is deleted, a new CB_Image folder will be created automatically when USB memory is used again with the **network board**.



3

Disconnect the USB memory

The disconnecting procedure depends on the computer's operating system. For details, refer to the computer's operating instructions or help files.

1. Click the [Hardware Removal] icon that is displayed in the task tray.

Click “Stop USB Mass storage Device - drive (E)”. (The E drive character will differ depending on the personal computer system.)

2. When the “USB mass storage device can be safely removed.” screen is displayed, click the display.

3. Click [X] to close.

This allows the USB memory device to be unplugged from the computer.

Note

- Do not disconnect the USB memory device while the USB memory device's access indicator is flashing. Doing so will damage the data.
- The USB drive may not be disconnected properly, for example if the computer is in the process of checking the status of peripherals.



“Remove hardware” icon (example)



Using the **network board** connected to a computer


When the **network board** and a computer are connected by USB cable, the **network board** is recognized as an external memory device (removable device). Below is the procedure for copying the “CBImage” file from this device onto the computer.

Images can be stored in JPEG (.jpg), PNG (.png) or PDF (.pdf) format, selectable in the **network board** settings (“CB Setup”). (See pages E-26.) The factory default is “PNG”.

CAUTION

With this function, if the operation for disconnecting the USB connection between the **network board** and computer is performed or the **network board**'s power is turned off, the image data in the **network board**'s computer storage memory is deleted. Be sure to save important image data on the computer, etc.

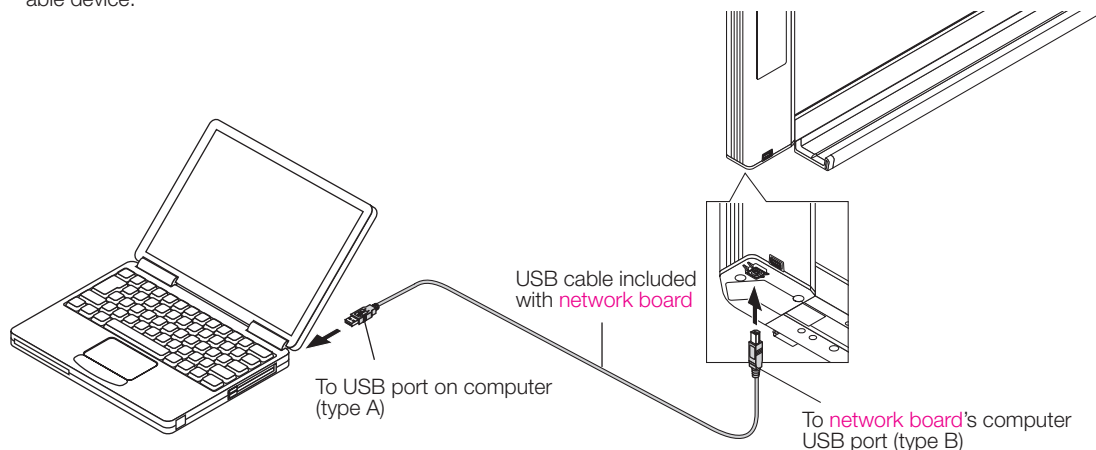
Notice

- Only one screen's worth of data can be stored in the **network board**'s memory for computer storage. When the **network board**'s save operation is performed successively, previous data is overwritten.
- Do not store computer data in the **network board**'s memory for computer storage.
- The memory for computer storage cannot be formatted from a computer.
- Do not disconnect the USB cable or access the **network board** while data is being saved after pressing the **network board**'s Save  button. Doing so will cause the computer's operation to become unstable.
- Do not press operation buttons on the **network board** while the **network board**'s memory for computer storage is being accessed from the computer. Doing so will result in increased time for response between the computer and **network board**, and operations may not be possible.
- When connected to a Macintosh computer, the warning message “The disk was not ejected properly.” is displayed, but the data can be stored normally in the computer's memory.

1

Turn on the **network board**'s power and connect the PC dedicated USB port (type B) and computer using the USB cable.

- **Usually** the standard driver is installed automatically and the **network board** is identified by the computer as a removable device.



2

Press the Save  button to store.



Display window

LEDs flash in circular motion during saving in memory for computer storage

- One sheet's worth of the screen is scanned (scrolled) and storing in the memory for computer storage starts once scrolling stops. The LEDs on the display window flash in a circular motion during saving in the memory for computer storage.
- When storing is performed using **consecutive** printing function (see page E-19), a consecutive storage number is added after “CBImage”. (Example: For two screens – CBImage-1.png, CBImage-2.png)

3

On the computer, open “My Computer”, and from there open the network board identified as a removable device.

- (1) Double-click the “My Computer” (or “Computer”) icon to open it.
- (2) When the device icon for the network board (displayed as a removable disk) is double-clicked, the network board’s internal memory opens.
The “CBImage” file is the scanned image file (“.jpg”, “.png” or “.pdf”, according to setting).
 - The “setup” folder contains the simple network settings file.
- (3) Copy the “CBImage” file to [My Documents], etc., on the computer (“.jpg”, “.png” or “.pdf”, according to setting).

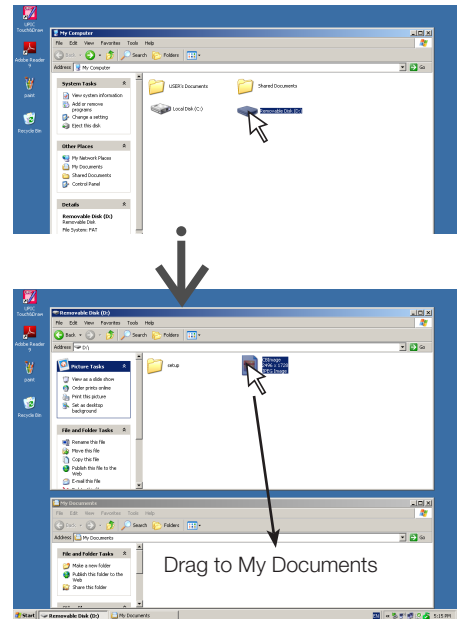
To disconnect the USB cable, follow the procedure in step 3 on page E-23.

Note that the image data in the network board’s computer storage memory is deleted if the operation for disconnecting the USB connection between the network board and computer is performed at this time.

Note

If both USB memory device and computer are connected to the network board, data is saved in memory for PC. Data is not saved in memory for USB.

- The “setup” folder will be created in memory for PC. This folder contains the “setting.ini” file recording the firmware version, MAC address, network settings.
For details, refer to the separate “N-31 Series Network Manual”.

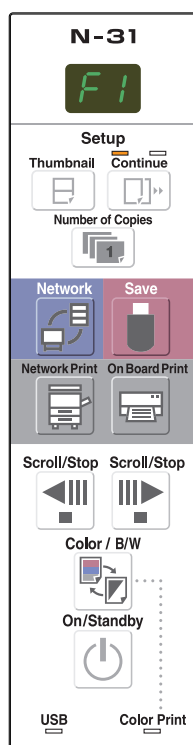


CB Setup (Operating the Network Board's Buttons)

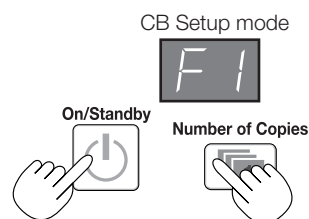
There are two ways to make the device settings: using the network board's operation buttons to make the settings ("CB Setup") and making the settings via the web on the computer connected to a network. The description here provides operation using the network board's buttons. For using the network board connected to a network, refer to the separate "N-31 Series Network Manual".

Basic setting operation

- Check that the power is on (that the display window is lit).
- When in the "CB Setup" mode, the **network board** will return to the normal mode if no buttons are operated for 10 seconds, so operate the buttons within 10 seconds.

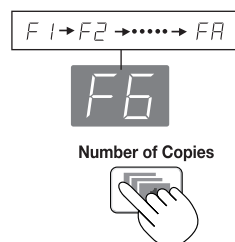


1 Switch to the CB Setup mode.
While pressing the ON/Standby button, press the Number of Copies button, then release the ON/Standby button. The **network board** switches to the CB Setup mode. "F1" appears on the display window. "F1" is the time setting. For instructions on the time setting, see page E-13.

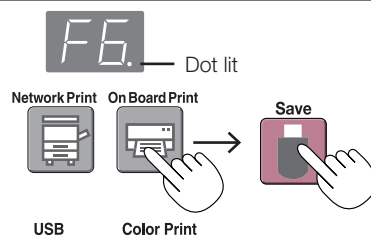


2 Select "the function number", then press the Save button.
Press the Number of Copies button (the function switches each time the button is pressed, returning to F1 after FF) to select the desired function number, then press the Save button to set that function number.
For the item names of the function numbers, see the "Table of Function Numbers and Settings" on the following page.

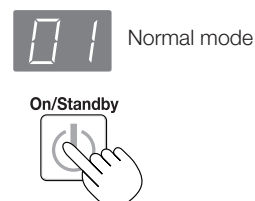
- When the Save button is pressed, the function number to be changed is set and a dot lights (ex.: "F6.").



3 Select "the setting", then press the Save button.
Press the **Network Print** or **On Board Print** button, check the setting, then press the Save button to set.
Check the setting according to whether the USB and Printer Status indicators are lit or off. See the "Table of Function Numbers and Settings" on the following page.



4 Exit the CB Setup mode.
Press the ON/Standby button. The **network board** returns to the normal mode. The display window returns to the number of copies display.





CB Setup (Operating the Network Board's Buttons)

Table of Function Numbers and Settings

Function Number	Setting Item	Description	Setting	Status Indicators	
F1	Time Setting	The date and time are stamped on the printing paper and recorded in the file information when files are stored.	Year, month, day, hours, minutes	Not lit	
F2	Paper Size	Selection of whether to print in A4 paper size or letter size. • This operates when the network board is connected to a printer.	A4*	USB ■ (Lit)	Color Print □ (Off)
			Letter	USB □ (Off)	Color Print ■ (Lit)
F3	Aspect Ratio Setting	Selection of the image's vertical-to-horizontal ratio (aspect ratio) when printing. Equal Ratio: The image is printed with the same ratio as the network board's sheet surface. Compressed: The image is compressed in the horizontal direction to the ratio of A4 or letter size paper for printing (ex: circles become ellipses).	Compressed*	USB ■ (Lit)	Color Print □ (Off)
			Equal Ratio*	USB □ (Off)	Color Print ■ (Lit)
F4	Color Printing	If this is set to [Invalid], color printing is not possible. Valid: When this is set, color printing is possible. Invalid: When this is set, color printing is not possible.	Valid*	USB ■ (Lit)	Color Print □ (Off)
			Invalid	USB □ (Off)	Color Print ■ (Lit)
F5	Resolution	Selection of the image file's resolution. Standard: The vertical/horizontal size of the scanned image is set to 1/2. The amount of data is 1/4 that of when "High Resolution" is selected. High Resolution: The image file has the same resolution as the scanned image (vertical/horizontal size of 1/1). The picture quality is better than when "Standard" is selected.	Standard	USB ■ (Lit)	Color Print □ (Off)
			High Resolution*	USB □ (Off)	Color Print ■ (Lit)
F6	Graphics File Format	Selection of the format in which image files are saved. Scanned images are converted into JPEG (extension ".jpg"), PNG (extension ".png") or PDF (extension ".pdf") format.	JPEG	USB ■ (Lit)	Color Print □ (Off)
			PNG*	USB □ (Off)	Color Print ■ (Lit)
			PDF	USB ■ (Lit)	Color Print ■ (Lit)
F7	Header/Footer	Setting of whether or not to output the header/footer information registered on the network board . "Off": The header/footer information is not output. "On": The header/footer information is output when printing and when saving image files. Note: • Headers and footers refer to the information at the top and bottom margins, respectively, of printed pages or images. Titles, company names or other characters or images can be inserted so that the same information is provided on all pages. • Header/footer information is registered on the network board via a network. For instructions on creating and registering headers and footers, refer to the separate "N-31 Series Network Manual" . • Depending on the type of printer, the colors may differ from the actual graphic image.	Off*	USB ■ (Lit)	Color Print □ (Off)
			On	USB □ (Off)	Color Print ■ (Lit)

continued on next page

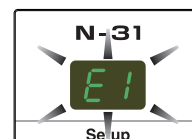
CB Setup (Operating the Network Board's Buttons)

Function Number	Setting Item	Description	Setting	Status Indicators	
F8	Erase Reminder	<p>Setting of whether or not to notify the user that characters or diagrams drawn on the back side of the network board's sheet surface have not been erased. This is effective for confidential meetings, etc.</p> <p>Disable: The Erase Reminder function does not work. (Setting upon factory shipment)</p> <p>Enable: When the ON/Standby button is pressed to turn the power off, the display window on the network board's operation panel flashes and the network board automatically moves to the non-erased surface, after which the power turns off.</p> <ul style="list-style-type: none"> The Erase Reminder function may not work properly due to dirt on the sheet adhesive or marker traces. 	Disable*	USB ■ (Lit)	Color Print □ (Off)
			Enable	USB □ (Off)	Color Print ■ (Lit)
F9	Time Day Stamp Format	<p>Selection of the format in which the date and time are displayed.</p> <p>Examples of displays:</p> <p>YYYY/M/D 2011/1/23 01:23</p> <p>DD-MMM-YYYY 23-Jan-2011 01:23</p> <p>MMM-DD-YYYY Jan-23-2011 01:23</p>	YYYY/M/D*	USB ■ (Lit)	Color Print □ (Off)
			DD-MMM-YYYY	USB □ (Off)	Color Print ■ (Lit)
			MMM-DD-YYYY	USB ■ (Lit)	Color Print ■ (Lit)
FF	Reset Device Settings	<p>This restores the network board device settings at F2 to F9 to their defaults (settings upon factory shipment).</p> <p>The settings marked " * " are the defaults.</p> <p>(1) Select FF, then press the Save  button. "FF." is displayed (with the dot lit).</p> <p>(2) Press the Save  button again. The settings are reset.</p>	—	—	—













Meaning of Error Messages

If any of the following flashing indications appear in the display window of the control panel, please check the matters described below.

Error messages flash for 5 seconds, then stop flashing, remaining lit.











Network board (main unit) related errors

Error Display Number	Problem and Solution		
	Printer not connected No printing paper Printer problem	<ul style="list-style-type: none"> Is the printer cable connected? Is power being supplied to the printer? When the printer uses an AC power adapter, is the cable disconnected somewhere? Has paper been set in the printer? Is the printer error indicator flashing (or lit)? 	<ul style="list-style-type: none"> Connect the printer properly and switch on the printer power. Turn the power of the printer off and then on again, and load the printer with A4 or letter size paper. Read the printer instruction manual.
	USB Memory not recognized	<ul style="list-style-type: none"> Is the USB memory unformatted. Is a USB memory that is not supported by the network board being used? Is the USB memory device plugged in fully? Is the USB memory damaged? 	<ul style="list-style-type: none"> This unit supports the FAT and FAT 32 formats. Perform the formatting with the personal computer. The file formats for USB memory devices that can be used on this network board are FAT and FAT32. Please check the operation with a personal computer. —
	Memory storage problem	<ul style="list-style-type: none"> An error occurred during memory storage. 	<ul style="list-style-type: none"> Please perform memory storage again. Do not insert or remove the USB memory during processing.
	Reading problem	<ul style="list-style-type: none"> There is a lighting fault of the reading light source, or a read signal error. 	<ul style="list-style-type: none"> Unplug the power plug from the power outlet and then plug it in again.
	System error	<ul style="list-style-type: none"> There is a memory or internal fault. 	<ul style="list-style-type: none"> Unplug the power plug from the power outlet and then plug it in again.
	Security protection	<ul style="list-style-type: none"> The operation is set to “Disable” in the security settings. 	<ul style="list-style-type: none"> Change the setting of the desired item to “Enable”. (Refer to the separate “N-31 Series Network Manual”.)
	Color printing prohibited	<ul style="list-style-type: none"> Coloring printing is set to “Disable”. 	<ul style="list-style-type: none"> Change the color printing setting to “Enable”. (See pages E-27.)
	USB memory not connected	<ul style="list-style-type: none"> USB memory device is not plugged into the main unit. 	<ul style="list-style-type: none"> Plug the USB memory device into the USB port.
	Memory is full	<ul style="list-style-type: none"> There is no available space. 	<ul style="list-style-type: none"> Please delete unnecessary data using a personal computer. (See page E-22 and refer to the separate “N-31 Series Network Manual”.)
	An unsupported printer is connected	<ul style="list-style-type: none"> A printer that is not supported by the network board has been connected. 	<ul style="list-style-type: none"> Press the ON/Standby button and switch off the power. When a record is required, switch on the power and save to USB memory.
	Time setting error	<ul style="list-style-type: none"> An error has occurred when setting the time. 	<ul style="list-style-type: none"> Start over and set the proper date and time.
When the “USb” letter display is flowing...Warning that disconnection of USB memory has been forgotten 		<ul style="list-style-type: none"> Did you press the ON/Standby button while the USB memory device was plugged into the main unit? 	<ul style="list-style-type: none"> A USB memory device is plugged into the main unit. When the USB memory device is disconnected, the power will be switched off and the unit will enter the standby mode.

If the problem persists, please contact your nearby PLUS Corporation sales office, dealer, or store.

Meaning of Error Messages


Network (main unit) related errors

Error Display Number		Problem and Solution	
	LAN cable disconnected	<ul style="list-style-type: none"> No cable is connected to the LAN terminal. 	<ul style="list-style-type: none"> Connect the LAN cable properly.
	FTP server recognition error	<ul style="list-style-type: none"> The user name or password is wrong. 	<ul style="list-style-type: none"> Input the correct user name and password. (Refer to the separate "N-31 Series Network Manual".)
	FTP server connection failure	<ul style="list-style-type: none"> The FTP server's IP address is wrong. 	<ul style="list-style-type: none"> Consult the network administrator then set the FTP server's IP address. (Refer to the separate "N-31 Series Network Manual".)
	FTP server writing failure	<ul style="list-style-type: none"> There is no FTP storage folder. 	<ul style="list-style-type: none"> Consult the network administrator then set the FTP storage folder.
	IP address not set, other network error	<ul style="list-style-type: none"> An error other than one indicated by L1 to L4 has occurred. 	<ul style="list-style-type: none"> Unplug the power cord from the power outlet then plug it back in.
	FTP printing error	<ul style="list-style-type: none"> The FTP printing error has occurred. 	<ul style="list-style-type: none"> Check if the settings for FTP printing are correct. (refer to the separate "N-31 Series Network Manual".)
	Network settings reset error	<ul style="list-style-type: none"> An error has occurred in resetting the network settings. 	<ul style="list-style-type: none"> The network reset number is wrong. Input the correct number and repeat the operation. (Refer to the separate "N-31 Series Network Manual".)
	Header/footer writing error	<ul style="list-style-type: none"> This occurs when the size of the inserted image is too large. 	<ul style="list-style-type: none"> Adjust the image then repeat the operation.


Network-related errors indicate errors in access between the **network board** and network. In some cases they are related to the network system, so consult the network administrator. If the problem persists, it may be due to a **network board** malfunction. Contact your store of purchase.

Troubleshooting


Please check the following matters before making a request for servicing.

	Condition	Please Check
Network board Related	Pressing the ON/Standby  button does not switch on the power.	<ul style="list-style-type: none"> Check whether the cable of the AC power adapter is disconnected from the DC connector of the Network board or the wall outlet. (Unplug the AC power cable from the outlet, wait several seconds and then plug it back into the outlet again.)
	Writing on the sheet is not erased with the eraser.	<ul style="list-style-type: none"> Was a marker other than a dedicated marker used?
	Dark horizontal lines on a printed out hard copy or image on the screen are generated.	<ul style="list-style-type: none"> Perform the scanning adjustment (white calibration). (See page E-33.)
	Parts of characters and lines are not displayed on printouts or in image data.	<ul style="list-style-type: none"> Blurred characters and thin lines may not be displayed on printouts or in image data.
	Scanned copy (image) is dirty, Erase Reminder function is activated even when sheet is erased with the eraser	<ul style="list-style-type: none"> Is there marker residue or substantial quantities of refuse on the sheet? (If the sheet is dirty, moisten a soft cloth with water, wring well, then wipe the sheet in a stroking manner.)
	When the network board and PC are connected, the PC does not recognize the network board	<ul style="list-style-type: none"> Check whether the network board is in an operable condition, and whether the USB cable is connected properly. Is the network board connected to the PC via a USB hub? (Connect the network board directly to the USB port of the PC.)
	The date is not updated.	<ul style="list-style-type: none"> The network board's battery is dead. Contact your store of purchase.

* If the problem persists, please contact your nearby PLUS Corporation sales office, dealer, or store.

	Condition	Please Check
Printer Related	The network board's power turns on, but the printer's power does not.	<ul style="list-style-type: none"> Check whether the printer's power plug (DC plug) is securely inserted. If the power still does not turn on, check whether the printer's AC power adapter side plug is unplugged from the AC power adapter. (For some printers it is directly mounted.)
	Printing is not possible when On Board Print  button is pressed.	<ul style="list-style-type: none"> Check that the power cable of the printer and the printer cable are securely connected. Check that the printer power indicator is lit. Check whether the network board's status indicators and the printer's error indicator are lit. If an error is displayed on the network board's display window, see page E-27. (Please see the printer instruction manual for information about printer errors.)
	The paper feed is abnormal.	<ul style="list-style-type: none"> Possible causes include damp paper, overly thin or thick paper, only one sheet of paper is set, and a curved setting of the paper. (Please see the instruction manual for your printer.)
	An altered color is printed, not the specified color.	<ul style="list-style-type: none"> Please replace the print cartridges with new ones.
	There is no printing.	<ul style="list-style-type: none"> Check that the print cartridge is properly set. Check that the print cartridge is not plugged.
	<ul style="list-style-type: none"> Print is very pale, there are white lines on it, or page is dirty. Printed colors are very different from those of the markers that were used. 	<ul style="list-style-type: none"> Is the print cartridge's nozzle partially choked? Make a test print and check the conditions of the nozzle.

Also see the descriptions of error indications at “Network (main unit) related errors” on page E-49.

Condition		Please Check
Network related	Network communications not possible	<ul style="list-style-type: none"> Is the LAN cable properly inserted? The LAN cable could be defective. Use a straight cable (10Base-T or 100Base-TX compatible) to connect the network board to the network. Set the IP address and subnet mask at “Simple Network Settings (via USB)”. * Be sure to check with the network administrator before making the various settings. Depending on the type or setting of DHCP server, some IP address cannot be acquired. If this happens, set the IP address manually.
	Checking MAC address	<ul style="list-style-type: none"> See “Simple Network Settings (via USB)**”.
	Cannot log in.	<ul style="list-style-type: none"> Is “Caps Lock” set on the computer’s keyboard while inputting the user name and password?
	Printing is not possible when Network Print  button is pressed.	<ul style="list-style-type: none"> Set the Printer Setting in the “Network Setting”*.

* For setting or checking for network, refer to the separate “N-31 Series Network Manual”.

Test Printing

1) With the **network board**’s power on (with the display window lit), press the Number of Copies button repeatedly to display “ P” on the display window.

2) Press the Color / B/W  button to select a printing color mode and press the On Board Print  button.

* Test printing starts.

Check the print

- Is the each color line printed uniformly?
- Are there missing dots, pale lines, lines with thinner ink than others, etc.?

Remedy

- If the nozzle is partially choked, clean it.
- If the quality of the print does not improve even though the nozzle has been cleaned, wipe off the ink on the surface of the nozzle.

For details, see the “User’s Guide” included with the printer.

* Please see your printer manual for information about printing problems, printer maintenance, and details related to printing.

Updating the **network board**’s internal program

See the PLUS website for instructions on updating the program and to download the latest program.

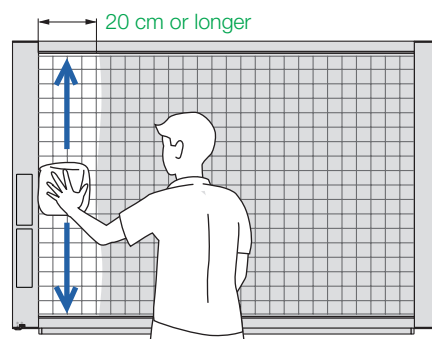
Scanning Adjustment (White Calibration)

If dark lines (horizontal black lines) on a printed out hard copy or image on the screen are generated, you need to optimally adjust the sensitivity of reading the sheet surface. If the scanning image does not work due to generation of dark lines, update the program and perform the white calibration in the following steps.

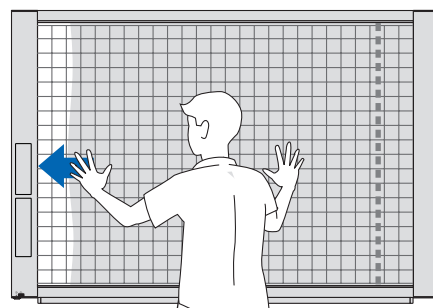
Preparation:

1. Use the supplied white board cleaner or damp cloth to clean the 20 cm of width on the left edge of the network board.

Avoid cleaning the joint part of the sheets. Doing so may cause incorrect calibration.



2. Feed the sheet manually until the half width of cleaned sheet is covered by the frame of the network board.



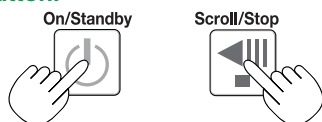
Operation

1. Make sure that the network board's power is turned on.

(Display on the display window is "01".)



2. Press the Scroll/Stop button (on the left) while pressing and holding the On/Standby button.



3. Release the buttons.

The display "CAL" will be changed.

* "CA" → "AL" → "L" in this order



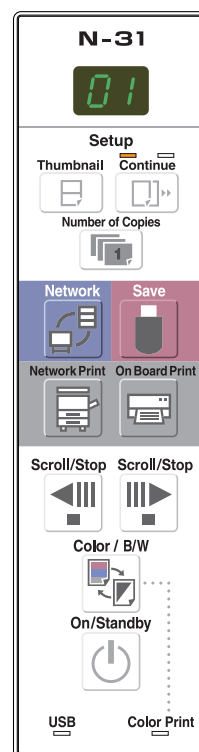
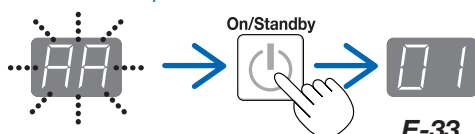
4. Press the Save button.

The display on the display window starts rotating and adjusting automatically.



5. When the display on the display window is flashing "AA", press the On/Standby button.

The display on the display window returns to "01", indicating that the reading adjustment is completed.



Specifications

BOARD TYPE (Model name)			Standard (N-31S)	Wide (N-31W)	4-screen (N-314)
Form	Installation method		Self-standing (T-shaped legs), or wall mounting		
	External dimensions (T-shaped legs*1)		W1480 × D675 × H1947*2 mm	W1980 × D675 × H1947*2 mm	W1480 × D675 × H1947*2 mm
	Main unit weight		20 kg*3	25 kg*3	25 kg*3
	T-shaped legs weight		12.5 kg		
BOARD	Panel Size		H910 × W1300 mm	H910 × W1800 mm	H910 × W1300 mm
	Effective reading size		H900 × W1280 mm	H900 × W1780 mm	H900 × W1280 mm
	Number of Pages		2		4
	Paging		Bi-directional, endless (Horizontal scrolling)		
	Drive method		Sheet movement		
	Reading method		CIS (Contact Image Sensor)		
	Reading illumination light source		RGB LED		
	Reading resolution		Main scanning direction (vertical sheet surface) 1.92 dots/mm (50 dpi or equivalent) Sub scanning direction (horizontal sheet surface) 1.92 dots/mm (50 dpi or equivalent)		
Interface	Board	File format	JPEG, PNG, PDF		
		Screen size	Standard type: 2458 × 1728 dots (fixed) Wide type: 3418 × 1728 dots (fixed)		
	External memory	Type	USB Flash memory *4		
		Compatible FAT types	FAT 16, 32		
		Interface	USB2.0		
	Network	LAN port	RJ-45 (10Base-T/100Base-TX)		
		Supported protocol	TCP/IP (FTP, HTTP, DHCP, NetBIOS Name Service)		
	Printing	Printing resolution	300 dpi or equivalent		
		No. print colors	Eight colors or two color monochrome		
		Printer interface	Conforming to USB 2.0 standards/LAN port		
		Supported network printer	FTP supported printer		
Added functions	Clock		Used for the timestamp and for file dating properties		
	PC connection		Images can be acquired and device settings made via USB (using a browser)		
Power supply	AC power adapter		Input : AC100–240V/50–60 Hz, Max 0.75 A Output : DC 12 V, 3.0 A		
	Power consumption		In standby: 3 W, During operation: 12 W (not including printer)		
Operating conditions	Temperature:		10–35°C		
	Humidity:		30–85% (No condensation)		
Miscellaneous	Ruled lines		50 mm cross-ruled squares		
	Miscellaneous		Dedicated markers (black, red, blue, and green)		
Operating environment	Web browser		Windows: Internet Explorer 8.0 or greater Macintosh: Safari 5 or greater * Enable JavaScript.		

Remarks

*1: The height is adjustable at 1747, 1847 and 1947 mm.

*2: The value indicated for “H” (height) is the maximum height.

*3: Not including the weight of the printer.

*4: USB memory device not included. The memory capacity corresponds to 32GB or less.

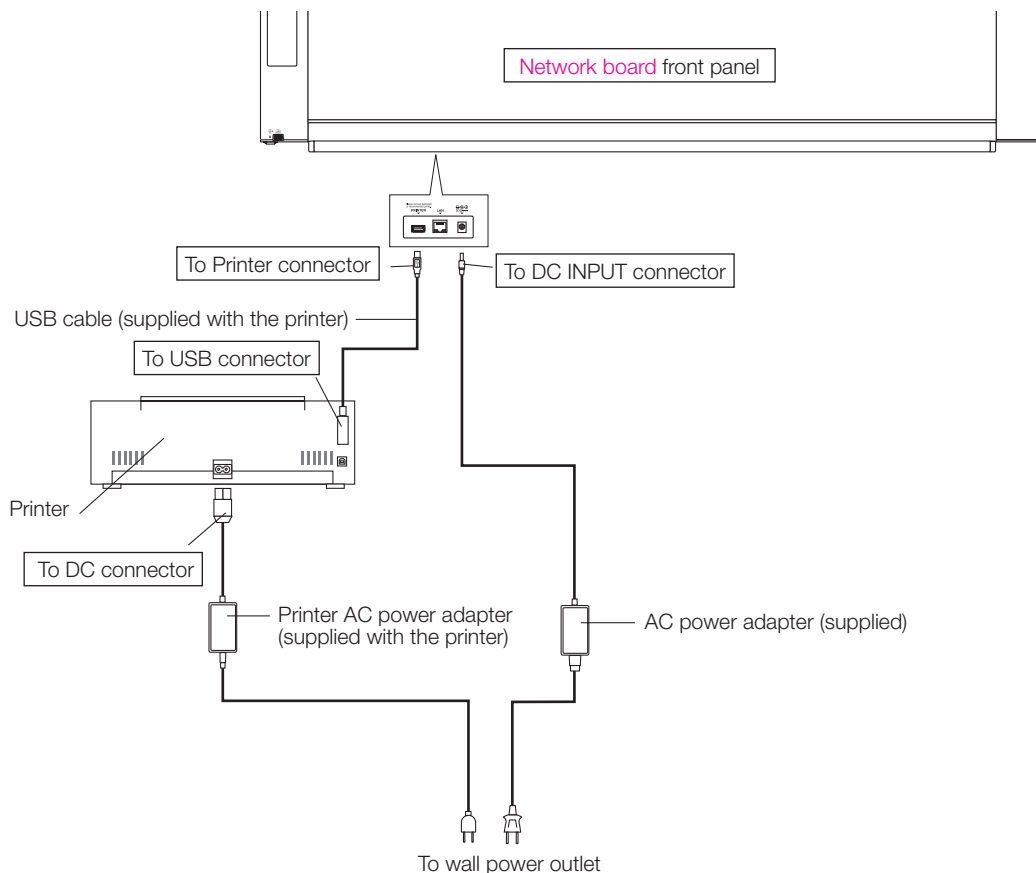
- Please note that for quality improvement purposes, specifications and design are subject to change without prior notice.

Appendix

Connections and Wiring Diagram

- The connections and wiring diagram below is included here for checking the connections.

[Network board and Printer Connections Diagram]



* Appearance of printer is for illustration purposes.

Note

- The AC power adapters of accessories and printers that have been verified to be operation many differ from the ones shown on the connections diagram (they may be of the built-in or mounted-on type).

FCC Caution:

Changes or modifications not expressly approved by the party responsible for compliance could void the user's authority to operate the equipment.

FCC Statement:

This equipment has been tested and found to comply with the limits for a Class A digital device, pursuant to part 15 of the FCC Rules. These limits are designed to provide reasonable protection against harmful interference when the equipment is operated in a commercial environment. This equipment generates, uses, and can radiate radio frequency energy and, if not installed and used in accordance with the instruction manual, may cause harmful interference to radio communications. Operation of this equipment in a residential area is likely to cause harmful interference in which case the user will be required to correct the interference at his own expense.

RSS-Gen & RSS-210 statement:

This device complies with Industry Canada licence-exempt RSS standard(s).

Operation is subject to the following two conditions: (1) this device may not cause interference, and (2) this device must accept any interference, including interference that may cause undesired operation of the device.

Le présent appareil est conforme aux CNR d'Industrie Canada applicables aux appareils radio exempts de licence. L'exploitation est autorisée aux deux conditions suivantes : (1) l'appareil ne doit pas produire de brouillage, et (2) l'utilisateur de l'appareil doit accepter tout brouillage radioélectrique subi, même si le brouillage est susceptible d'en compromettre le fonctionnement.

PLUS Corporation

ISO 14001 certification.

©2011, PLUS Corporation

26-4606-11G