

ACTIVE RSE MONITOR-10.1 STD  
ATM1010AA0  
Active Rear Seat Entertainment  
System  
Owners Manual



# ATM1010AA0 Owners Manual

## English

English

© 2012 Atom Enterprises, Inc. All rights reserved. This manual, or any portion thereof, may not be reproduced without the express written consent of Atom Enterprises, Inc.

For any questions, please call customer service (855) 574-2866  
[www.\*\*atomenterprisesinc.com\*\*](http://www.atomenterprisesinc.com)

# ATM1010AA0 Owners Manual

## Table of Contents

General information	4
Safety instructions	4
General Characteristics	4
Cleaning and care	4
Supported media	5
Country codes	5
Opening and closing display	6
Front panel control buttons	7
Inputs/outputs	8
Remote control	9-10
Wireless IR headphones	11

### **Operation**

Playing a disc	12
Playing media via A/V input	12
Playing media via USB	12
Playing media via HDMI/MHL input	12
FM Transmitter function	12
Sharing media between monitors	13

### **Setup**

System setup menu	13
DVD setup menu	13

Troubleshooting	14
Compliance information	14-16
Specifications	16

## General Information

Please read this instruction manual carefully.

Poor road conditions can cause problems with some media playback.

In cold environments, the screen may sometimes display distortion. This is normal.

## Safety Information

For safety reasons, it is recommended that media is only changed when vehicle is stationary. Children should not be permitted to unfasten their seatbelt to function the system/change media. System can be functioned using the remote control with seatbelts fastened.

The use of headphones at high volume can cause permanent damage to hearing. To avoid hearing damage, set the volume to low before using them.

It is unlawful, in most jurisdictions, and unsafe to drive a motor vehicle which is equipped with a video display that is visible, directly or indirectly, by the driver while moving. This system should never be installed where visible by the driver.

## General Characteristics

- 10.1" LED LCD display
- 1024 x 600 Resolution
- Slot load DVD player
- Front sensor key pad controls
- Support IR headphones/remote control
- Analog A/V input-1/8" Jack
- USB 2.0/1amp charging
- SD card slot
- Stereo headphone output-1/8" Jack
- FM Transmitter (88.3-107.7 MHZ)

## Caution

Do not operate the system without the vehicle running, as it may cause the battery to drain. Please make sure the system is turned off when the vehicle is not running.

## Cleaning and Care

Clean your rear seat entertainment system with a soft, dry cloth. For stubborn deposits, a mild cleaning agent may be used. Wipe off and finish with a dry cloth.

Please note that strong cleaning agents, such as alcohol, thinners, benzene, insecticides, may cause damage to the system and should never be used.




## Supported Media

### Supported disc media

Before inserting media, ensure that it is compatible with the system. Please note that the following data media is NOT compatible with the system:

- Optical data media (CD-1, CD-ROM, DVD-ROM)
- Mini disc

### Disc types that are compatible

Symbol	Disc Type
	Video DVD
	Audio CD (ie: CD-R with MP3, MPEG, WMA, or JPG files)
	Video CD

### Country code restrictions

If the country code on a DVD disc does not match the system country code, the DVD cannot be played.

Region	Countries in this region
1	Canada, USA, US territories
2	Japan, Europe, South Africa, Middle East (including Egypt)
3	South East Asia, East Asia (including Hong Kong)
4	Australia, New Zealand, Pacific Islands, Central America, Mexico, South America, Carribean
5	Former Soviet Union, (also North Korea, Mongolia), Indian subcontinent, Africa
6	China

### Supported USB/SD media files

MP3,WMA,OGG,MPE,MPG,MPEG,AVI, DIV,VID,VOB,JPG,JPEG, AAC, M1V, M2V, OGM.

### Supported HDMI/MHL input

- HDMI media from any HDMI output Device
- HDMI media from MHL compatible device (ie: MHL compatible smartphone, MHL compatible tablet, etc) NOTE: only certain devices are MHL compatible and may require special cables/adapters (please check with the device manufacturer)

## Opening and closing the display

Display is held closed with 2 flexible tabs that snap into the sides of the display. Pull on the tabs outward to disengage the tabs before opening the display. The display can then be opened and viewing angle adjusted by rotating it into the upright position (see below)

### Caution:

Please make sure tabs are snapped fully into the display when in the closed position to make sure the display is secured safely.



Display closed

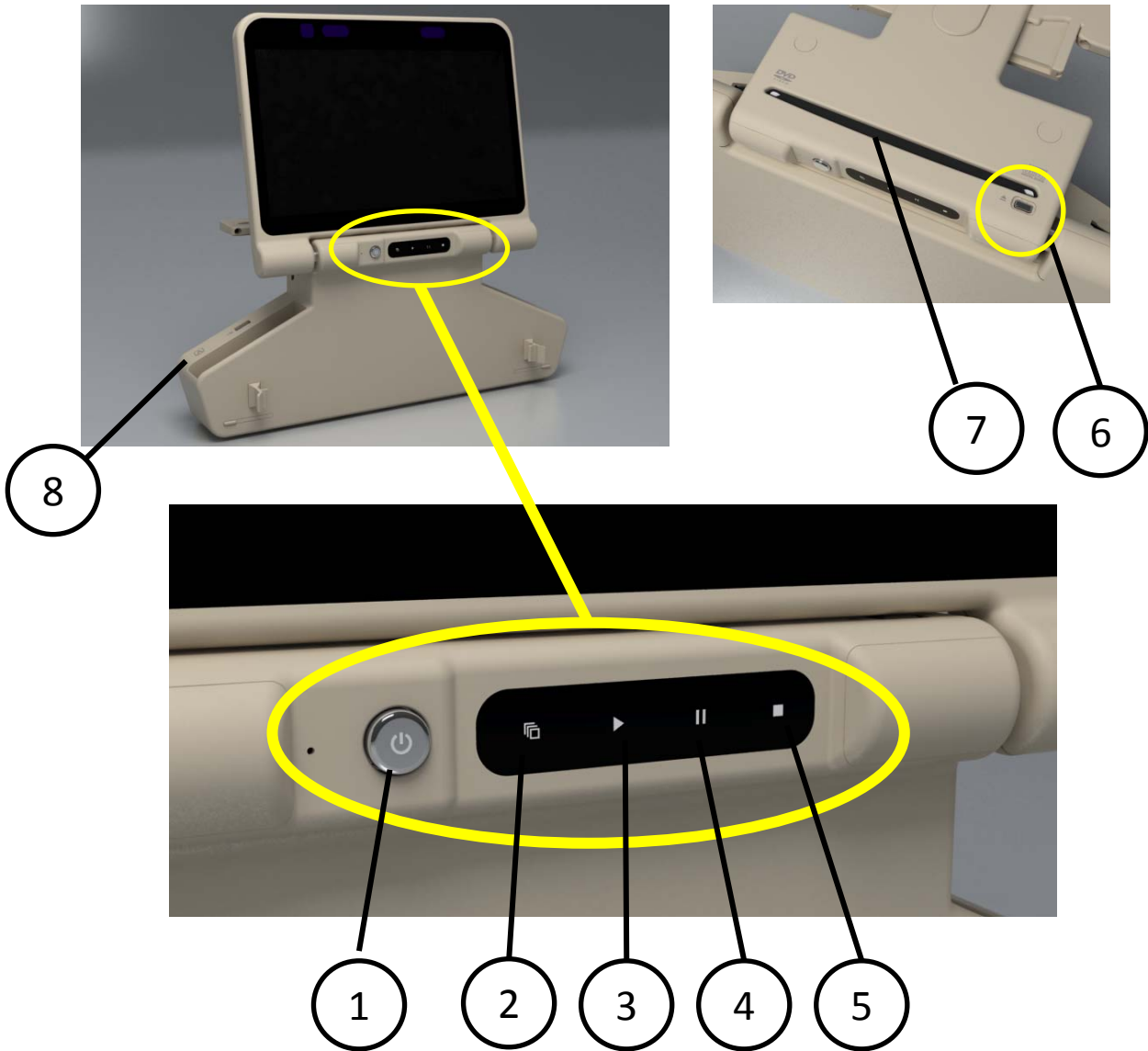


Closure tabs



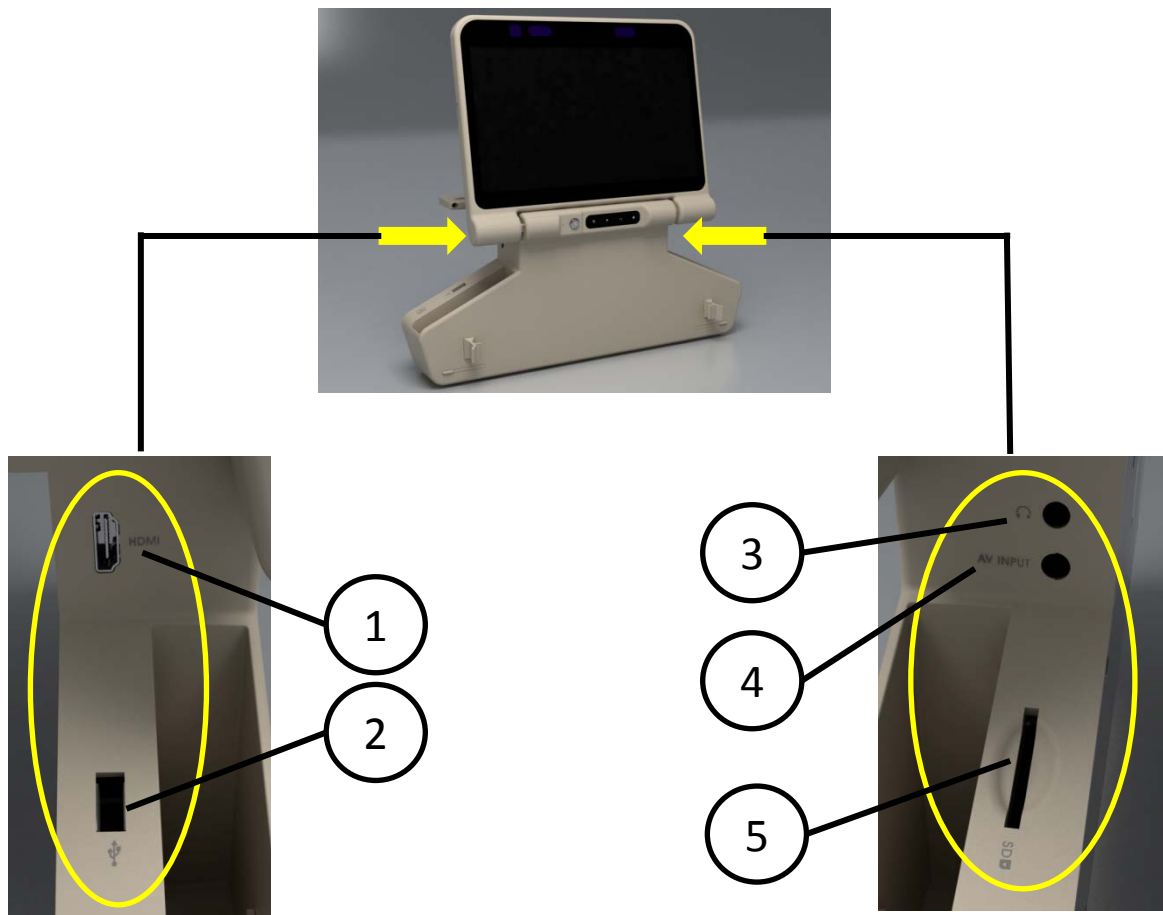
Display open

## Panel Control Buttons/Disc slot



1. Power button-turns system power on/off.
2. Source button-select media source for playing media (ie:DVD, AV input, MHL/HDMI, USB, SD)
3. Play-starts playing media source selected.
4. Pause-pauses media that is playing.
5. Stop-stops media that is playing.
6. Eject-ejects disc (display MUST be in closed position to insert/eject disc)
7. Disc slot (**ONLY ACCESSIBLE WHEN DISPLAY IS CLOSED**)
8. Monitor identification- "A" OR "B".

# Inputs/Outputs



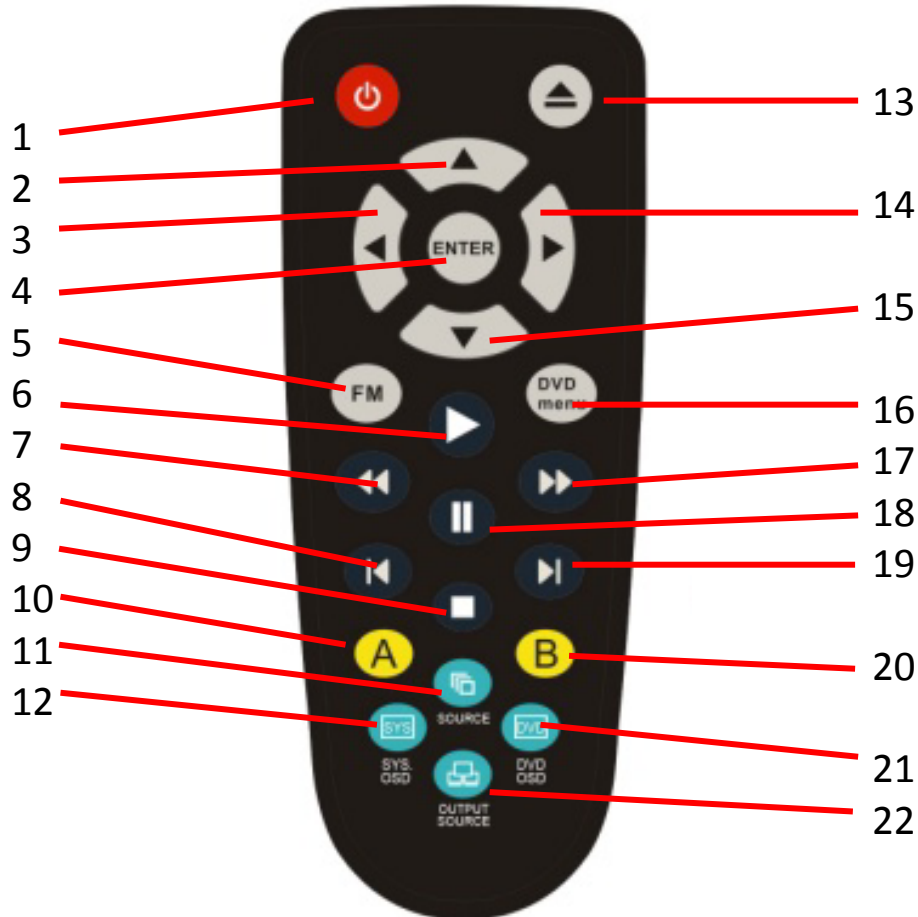
1. HDMI input (MHL compatible)
2. USB 2.0 input (1 amp charging)
3. Headphone jack output (wired)
4. A/V input jack (analog 3.5MM)
5. SD card slot



## Remote Control Buttons/Functions

To control monitor A, press the A button first.

To control monitor B, press the B button first.



1. **POWER** - turns power on/off
2. **UP** - navigate selection up
3. **LEFT** - navigate selection left
4. **ENTER** - accepts selection
5. **FM** - turns FM transmitter on/off (station can also be changed when button is depressed) \*\*Function is for Monitor A only.
6. **PLAY** - select to play media
7. **REVERSE** - reverses play (fast)
8. **PREVIOUS** - selects previous track
9. **STOP** - stops media from playing
10. **A** - depress to control A monitor
11. **SOURCE** - selects source to play media (DVD, USB, SD, AUX, MHL/HDMI)
12. **SYS OSD** - displays system menu

13. **EJECT** - ejects disc (only when display is in CLOSED position)
14. **RIGHT** - navigate selection right
15. **DOWN** - navigate selection down
16. **DVD MENU** - displays DVD "ROOT MENU"
17. **FORWARD** - plays media fast forward
18. **PAUSE** - pauses media being played
19. **NEXT** - selects next track
20. **B** - depress to control B monitor
21. **DVD OSD** - displays DVD setup menu
22. **OUTPUT SOURCE** - displays list of output sources (for monitor A only)

# Remote Control Battery Installation/Operation



TAB



1. Remove battery cover by depressing tab (in direction of arrow) then lifting cover.
2. Insert 2 AAA batteries (make sure batteries are installed with correct polarity (+/-))
3. Reinstall battery cover

**! NOTE:** There is risk of fire if batteries are not handled correctly. Do NOT recharge batteries. Do NOT intermix different battery types, or batteries not charged the same amount.

Please dispose of batteries per local laws.

**Please keep batteries out of reach of children.**

## Operation

To control monitor A, press the A button first. To control monitor B, press the B button first.

Remote control has an infrared beam, which must be aimed towards the top of the display monitor being controlled.

Monitor will not receive remote signal if beam is blocked.

# Wireless Headphones

Headphones are dual channel (A and B channel) infrared wireless.

Channel must be selected to match the display monitor being viewed (see below)

Headphones must be in line of sight of display monitor to receive audio signal

Headphones require (2) AAA batteries.

**NOTE:** Please make sure volume control is set to low for the safety of the next user (excessive volume can cause permanent damage)

Please note: headphones will power off automatically if no audio is played for more than 3 minutes. This is so the batteries aren't drained. In the event this happens, just turn the switch off then on.



- Volume control
- Power on/off switch
- Channel A/B selection switch
- Battery cover (depress and slide down to remove)

Monitor "A/B"  
identification  
location



# Operating Instructions

## Turning power on

Turn vehicle ignition "ON/ACC".  
Press power button on RSE front panel or remote control.

## Playing a Disc

Close display and insert disc (label side facing towards you)

Open display (AFTER DISC IS FULLY INSERTED)

Make sure DVD –Disc is the selected source.

Press play to start media.

**NOTE: disc can only be ejected when display is in closed position.**

## Playing media from USB

Insert USB device into USB slot on left side of unit.

Make sure DVD-USB is the selected source.

Use navigation buttons on remote to control media files

## Playing media from SD card

Insert SD card into SD card slot on right side of unit.

Make sure DVD-SD is the selected source.

Use navigation buttons on remote to control media files.

## Playing media from AUX input

Plug small male end of AV cable in to 3.5mm AV input on right side of unit

Plug other jack ends (RCA type) into device to be played.

Make sure AUX is the selected source.

Play device per device instructions.

## Playing media from HDMI/MHL input

Plug HDMI cable connector into HDMI jack on left side of unit.

Plug other end of cable into device to be played.

Make sure MHL/HDMI is selected source.

Play device per device instructions.

**NOTE: only devices with MHL or HDMI output capability can be used.**

## Playing audio through vehicle radio system

Depress FM on the remote control (if FM button is depressed again, it will turn off the FM transmitted)

Use the left/right navigation buttons to select desired radio station to play audio (88.3MHZ ~ 107.7MHZ )

Tune vehicle radio to station selected on unit.

**NOTE: Quality of audio may be affected by station selected. Certain radio stations may not be clearly audible when FM transmitter is turned on.**

## Sharing media on monitor B from monitor A

1. Press output source button on monitor A.
2. Use the up/down navigation buttons or output source button to scroll through sources (DVD-disc, DVD-SD, etc)
3. Select source desired to be viewed on monitor B.
4. Press the source button on monitor B.
5. Use the up/down navigation buttons or source button to scroll through the sources available until monitor A is highlighted.
6. Select monitor A.

**NOTE: media can only be shared from monitor A to monitor B. media cannot be shared from monitor B to monitor A. MHL/HDMI cannot be shared from the A monitor to the B monitor. This is normal.**

## Trouble shooting

### Unit will not power on

1. Be sure vehicle is turned on

### Remote control not working

1. Check batteries for correct installation and make sure they have plenty of charge left.
2. Make sure correct monitor is selected on the remote for the monitor desired to be controlled (monitor A/B)
3. Be sure remote is aimed directly towards top of monitor being controlled with no obstructions.

### No picture

1. Ensure correct source is selected (ie: DVD-Disc, DVD-SD, etc)
2. Ensure any external devices are correctly connected (ie: cable/s for AUX input, USB, SD, etc)

### No sound through IR headphones

1. Check batteries for correct installation and make sure they have plenty of charge left.
2. Check to make sure channel selected on headphones matches the monitor being watched (A or B)
3. Be sure headphones are in line of sight of display monitor being watched with no obstructions.

## FCC declaration

This system complies with FCC directive, section 15. System is subject to the following 2 conditions:

1. This system must not cause any harmful interference
2. This system may be subject to interference which may cause unwanted operation.

## FCC warning

1. In order to ensure ongoing FCC compliance, the system must be connected and operated with the supplied cables only.
2. Unauthorized modifications or alterations to the system may void this operating permit.

## FCC notice

Notice : The changes or modifications not expressly approved by the party responsible for compliance could void the user's authority to operate the equipment.

To comply with the FCC RF exposure compliance requirements, no change to the antenna or the device is permitted. Any change to the antenna or the device could result in the device exceeding the RF exposure requirements and void user's authority to operate the device.



## Canada IC

**This Class B digital apparatus complies with Canadian ICES-003.**

This device complies with Industry Canada license-exempt RSS standard(s). Operation is subject to the following two conditions: (1) this device may not cause interference, and (2) this device must accept any interference, including interference that may cause undesired operation of the device.

This device and its antenna(s) must not be co-located or operation in conjunction with any other antenna or transmitter.

Under Industry Canada regulations, this radio transmitter may only operate using an antenna of a type and maximum (or lesser) gain approved for the transmitter by Industry Canada. To reduce potential radio interference to other users, the antenna type and its gain should be so chosen that the equivalent isotropically radiated power (e.i.r.p.) is not more than that necessary for successful communication.

## Macrovision

This product contains copy protection technology protected by US patents and other intellectual property rights. The use of this copy protection technology requires the permission of macrovision and is intended without express further approval from macrovision only for domestic use and other limited applications. Reverse engineering or dismantling are forbidden.

## Specifications

Panel size	10.1"
Resolution	1024 x 600
Backlight	LED
Ratio	16:9
Luminance	500 NIT (typ.)
Expected backlight life	20k hours Min.
Operation temperature	-20~70 degrees C
Storage temperature	-30~80 degrees C
Video display system	NTSC
Input voltage	10-16VDC
I/O ports	USB 2.0, HDMI, SD, 3.5mm AV, 3.5mm earphone
IR Channels	A monitor: 2.3/2.8mhz B monitor: 3.2/3.8mhz
Supported formats	MP3,WMA,OGG,MPE, MPG,MPEG,AVI, DIV,VID,VOB,JPG,JPEG AAC, M1V, M2V,OGM

## WEEE directive

Disposal of old electrical and electronic equipment (applicable in the European Union and other European countries with separate collection systems)



This symbol on the product or it's packaging indicates that the device must not be treated as household waste. Instead, it must be handed over at the relevant collection point for the recycling of old electrical and electronic equipment. With correct disposal of the device, you are helping to avoid any negative effects on the environment and human health which might otherwise be caused by the incorrect disposal and treatment of waste. The recycling of materials helps preserve natural resources. You can obtain more information about recycling this device from your city council, your disposal company for household waste, or from the store in which you bought it. Applicable accessories: remote control, headphones.



# ATM1010AA0 Owners Manual

## **Spanish**

**Spanish**

# ATM1010AA0 Owners Manual

## **French**