

VIGORPLUS+
Dash Cams

Instruction Manual



English

V26X Series

Professional
High Definition Car DVR

Contents

PRECAUTIONS.....	2
PRODUCT SPECIFICATIONS.....	3
PACKAGE CONTENTS.....	5
PRODUCT FEATURES.....	6
CONTROLS.....	7
INSTALLATION	8
INSERTING THE MEMORY CARD	8
INSTALLING IN VEHICLES	9
VIDEO MODE.....	13
NORMAL RECORDING.....	14
EMERGENCY RECORDING (FILE PROTECTED).....	14
AUTO REPAIR	14
PLAYBACK MODE	15
PLAYING VIDEOS	15
VIEWING PHOTOS.....	16
MENU AND SETTINGS.....	17
MENU OPTIONS	17
UPDATING THE FIRMWARE	19
PC CONNECTION	20
REVIEWING VIDEOS WITH GPS LOG.....	20
My_Vcam APP (iOS).....	22
My_Vcam APP (Android).....	32
TROUBLESHOOTING	42

PRECAUTIONS

Please read this manual carefully before operation and keep it for future reference. It will be helpful should you encounter any operational problem.

WARNING: Do not expose this product to rain, moisture or water under any circumstances, doing so may result in the risk of electric shock of fire.

CAUTION: To reduce the risk of electric shock, do not perform and servicing other than that contained in the instruction manual unless you are qualified to do so.

- Have the unit serviced by a qualified service technician if; The Unit has been exposed to rain or water.
- The unit does not seem to operate normally.
- The unit exhibits a marked changes in performance.

LCD: A Liquid Crystal Display (LCD) screen is a multilayer complex component, containing 691,200 pixels. Pixels can however fail during normal product life. 1 pixel = 0.00014% failure rate, and one pixel failures per year of operation is considered normal and not a cause for concern.

WEEE: Disposal of Waste Electrical and Electronic Equipment and/or Battery by users in private households in the European Union.



This symbol on the product or on the packaging indicates that this can not be dispose of as household waste. You must dispose of your waste equipment and/or battery by handing it over to the applicable take-back scheme for the recycling of electronic equipment and/or battery. For more information please contact your local household waste disposal office

**DO NOT ATTEMPT TO SERVICE THE UNIT BY YOURSELF!
THE DEVICE WILL BECOME HOT DURING OPERATION. PLEASE AVOID
TOUCHING THE LENS DIRECTLY DURING OR AFTER USE.**

PRODUCT SPECIFICATIONS

Chip	<ul style="list-style-type: none">V263(W)-NT96670V262(W)-NT96670V26R-NT96671																														
CMOS Sensor	<ul style="list-style-type: none">V263(W): IMX415 8MV262(W): IMX335 5MV26R: IMX307 2M																														
Video Resolution	<ul style="list-style-type: none">V263(W):<table><tr><th>Single Channel</th><th>Dual Channel</th></tr><tr><td>4K/30fps</td><td>4K/30fps+1080P/30fps</td></tr><tr><td>2K/30fps</td><td>2K/30fps+1080P/30fps</td></tr><tr><td>1080P/60fps</td><td>1080P/60fps+1080P/30fps</td></tr><tr><td>1080P/30fps</td><td>1080P/30fps+1080P/30fps</td></tr><tr><td>720P/60fps</td><td></td></tr><tr><td>720P/30fps</td><td></td></tr></table>V262(W):<table><tr><th>Single Channel</th><th>Dual Channel</th></tr><tr><td>2K/60fps</td><td>2K/30fps+1080P/30fps</td></tr><tr><td>2K/30fps</td><td>2K/60fps+1080P/30fps</td></tr><tr><td>1080P/60fps</td><td>1080P/60fps+1080P/30fps</td></tr><tr><td>1080P/30fps</td><td>1080P/30fps+1080P/30fps</td></tr><tr><td>720P/60fps</td><td></td></tr><tr><td>720P/30fps</td><td></td></tr></table>V26R:<table><tr><th>Single Channel</th></tr><tr><td>1080P/30fps</td></tr></table>	Single Channel	Dual Channel	4K/30fps	4K/30fps+1080P/30fps	2K/30fps	2K/30fps+1080P/30fps	1080P/60fps	1080P/60fps+1080P/30fps	1080P/30fps	1080P/30fps+1080P/30fps	720P/60fps		720P/30fps		Single Channel	Dual Channel	2K/60fps	2K/30fps+1080P/30fps	2K/30fps	2K/60fps+1080P/30fps	1080P/60fps	1080P/60fps+1080P/30fps	1080P/30fps	1080P/30fps+1080P/30fps	720P/60fps		720P/30fps		Single Channel	1080P/30fps
Single Channel	Dual Channel																														
4K/30fps	4K/30fps+1080P/30fps																														
2K/30fps	2K/30fps+1080P/30fps																														
1080P/60fps	1080P/60fps+1080P/30fps																														
1080P/30fps	1080P/30fps+1080P/30fps																														
720P/60fps																															
720P/30fps																															
Single Channel	Dual Channel																														
2K/60fps	2K/30fps+1080P/30fps																														
2K/30fps	2K/60fps+1080P/30fps																														
1080P/60fps	1080P/60fps+1080P/30fps																														
1080P/30fps	1080P/30fps+1080P/30fps																														
720P/60fps																															
720P/30fps																															
Single Channel																															
1080P/30fps																															
Screen	2.0 inches screen																														
Video Code / Format	H.264/MP4 or TS																														
Audio	Built-in Microphone/Speaker																														
Memory Card Capacity	MicroSD card, support up to 256GB (Not included in package)																														
G-Sensor	Supported																														
Parking Mode	Supported (Hardwire kit not included in package)																														
Loop Recording	Supported:1/2/3/5 minutes per segment																														
Backup Power Source	Super capacitor (No lithium battery) (Ensures all videos are written to the memory card on power failure)																														
Working Temperature	-10°C ~ 60°C																														

External Power Supply	5V 1.5A																
Voltage / Current	<ul style="list-style-type: none"> V263 (without Wi-Fi): <table border="1"> <thead> <tr> <th>Single Channel</th><th>Dual Channel</th></tr> </thead> <tbody> <tr> <td>Voltage: 5V Current: 430~490mA</td><td>Voltage: 5V Current: 800~850mA</td></tr> </tbody> </table> V263W (with Wi-Fi): <table border="1"> <thead> <tr> <th>Single Channel</th><th>Dual Channel</th></tr> </thead> <tbody> <tr> <td>Voltage: 5V Current: 570~640mA</td><td>Voltage: 5V Current: 950~1010mA</td></tr> </tbody> </table> V262 (without Wi-Fi): <table border="1"> <thead> <tr> <th>Single Channel</th><th>Dual Channel</th></tr> </thead> <tbody> <tr> <td>Voltage: 5V Current: 400~450mA</td><td>Voltage: 5V Current: 710~750mA</td></tr> </tbody> </table> V262W (with Wi-Fi): <table border="1"> <thead> <tr> <th>Single Channel</th><th>Dual Channel</th></tr> </thead> <tbody> <tr> <td>Voltage: 5V Current: 520~560mA</td><td>Voltage: 5V Current: 810~860mA</td></tr> </tbody> </table> 	Single Channel	Dual Channel	Voltage: 5V Current: 430~490mA	Voltage: 5V Current: 800~850mA	Single Channel	Dual Channel	Voltage: 5V Current: 570~640mA	Voltage: 5V Current: 950~1010mA	Single Channel	Dual Channel	Voltage: 5V Current: 400~450mA	Voltage: 5V Current: 710~750mA	Single Channel	Dual Channel	Voltage: 5V Current: 520~560mA	Voltage: 5V Current: 810~860mA
Single Channel	Dual Channel																
Voltage: 5V Current: 430~490mA	Voltage: 5V Current: 800~850mA																
Single Channel	Dual Channel																
Voltage: 5V Current: 570~640mA	Voltage: 5V Current: 950~1010mA																
Single Channel	Dual Channel																
Voltage: 5V Current: 400~450mA	Voltage: 5V Current: 710~750mA																
Single Channel	Dual Channel																
Voltage: 5V Current: 520~560mA	Voltage: 5V Current: 810~860mA																
Size	<ul style="list-style-type: none"> 75mm x 40mm x 25mm (without GPS bracket) 75mm x 40mm x 75mm (with GPS bracket) 																
Net Weight	60 g																

PACKAGE CONTENTS

Please check the contents of your Dash Cam product package. The actual products might appear slightly different from the pictures shown below.

Dash Cam (Front camera)	Car charger with Type-C adapter	USB data cable	Quick start guide
GPS bracket with attached 3M adhesive sticker	Window Stickers (x2)	3M Adhesive Sticker	

- NOTE:**
- Car charger with Type-C adapter is used for supplying power from the 12-24Vdc outlet of your vehicle.
 - USB data cable is used for connection to a laptop/computer.

Optional accessories

Hardwire kit	Rear View Camera with 6m / 8m(optional, available in some regions only) rear camera cable (V26R)

- NOTE:**
- Hardwire kit is used for power connection to the fusebox instead of the 12-24Vdc outlet of your vehicle, which supports the *Parking Mode* function and car battery protection circuitry.

PRODUCT FEATURES

Thank you for purchasing this VIGORPLUS™ Dash Cam product. In this section, we will outline some of the features available with this camera.

2.0" LCD Colour Screen

Large screen for ease of use for the camera configurations and viewing the playback of both videos and photos.

140° Ultra-Wide Angle Lens

Ultra-wide angle lenses paired with the new Sony IMX415 (V263(W)) or IMX335 (V262(W)) Starvis sensors for superior night time video quality and reduced motion blur on views.

High Quality Recording Capability

The video resolution varies depending on the model number.

Model Number	Single Channel Resolution	Dual Channel Resolution
V263(W)	<ul style="list-style-type: none"> • 4K/30fps • 2K/30fps • 1080P/60fps • 1080P/30fps • 720P/60fps • 720P/30fps 	<ul style="list-style-type: none"> • 4K/30fps+1080P/30fps • 2K/30fps+1080P/30fps • 1080P/60fps+1080P/30fps • 1080P/30fps+1080P/30fps
V262(W)	<ul style="list-style-type: none"> • 2K/60fps • 2K/30fps • 1080P/60fps • 1080P/30fps • 720P/60fps • 720P/30fps 	<ul style="list-style-type: none"> • 2K/30fps+1080P/30fps • 2K/60fps+1080P/30fps • 1080P/60fps+1080P/30fps • 1080P/30fps+1080P/30fps
V26R	<ul style="list-style-type: none"> • 1080P/30fps 	

Combined with WDR Technology

V26X dash Camera balances bright and dark areas, displaying objects in consistent and accurate video or images, even in low-light environments. The camera is suitable for wide range-contrast environment.

G Sensor / File Protection

In the event of an impact, the camera will automatically 'protect' the recording, stopping the file from being overwritten. Individual files can also be 'protected' when viewed within playback mode.

You can also press the **red** (▲) button to manually start the 'protected' recording.

More information about File Protection/Emergency Recording:

- If the file protection/emergency recording starts at the beginning 15 seconds of recording file, both current file and previous recording file will be protected.
- If the file protection/emergency recording starts at the final 15 seconds of recording file, both current file and next recording file will be protected.

Automatic Start / Stop Technology

As soon as the vehicle ignition is turned on, the camera will start to record automatically. When the ignition is turned off, the camera will perform an automatic shutdown process.

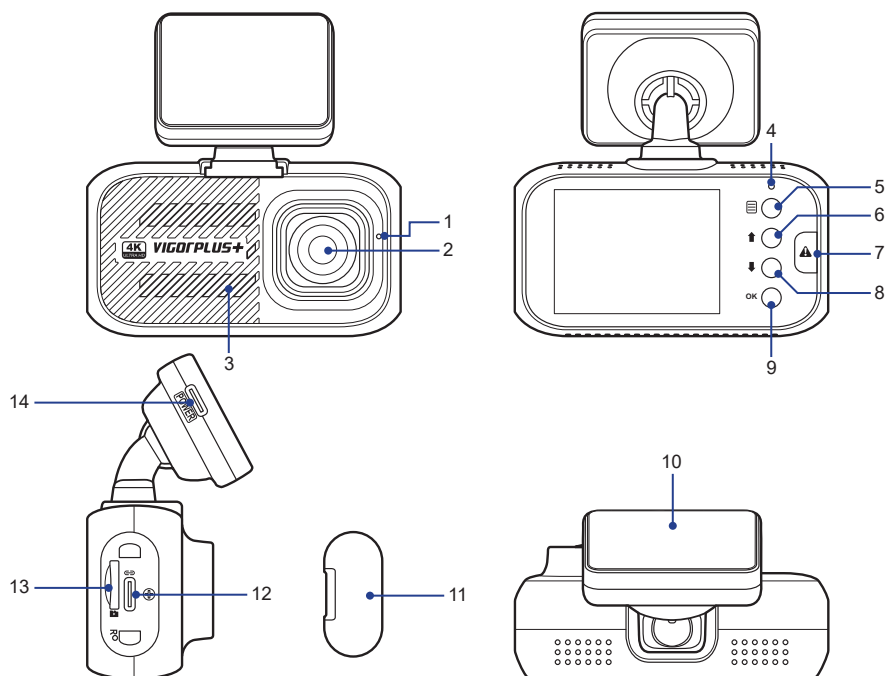
Optional Hardwire Kit with Parking Mode Function

With this function, the camera automatically starts recording when it is triggered by the G-Sensor, keeping your car safe when parked.

Built-in Microphone & Speaker

Record audio to compliment the video recordings.

CONTROLS



1. MICROPHONE

Integrated microphone for audio recording.

2. CAMERA LENS

Wide angle 140°.

3. SPEAKER

Integrated speaker for audio playback.

4 LED INDICATOR

- Red = power on
- Red flashing = recording

5. MENU (≡)

- Press to open the OSD menu.
- Long press to enter the Wi-Fi mode.

6. UP (↑)

- Recording Mode: Enter the Playback mode.
- Playback Mode: Move to the next file.
- Video Playback Mode: Rewind playback.
- In the Menus: Navigate up within menus.

7. SOS FILE PROTECTION (▲)

'One touch button' to protect current file in event an emergency situation.

8. DOWN (↓)

- Recording Mode: Take a snapshot.
- Playback Mode: Move to the previous file.
- Video Playback Mode: Fast forward playback.
- In the Menus: Navigate down within menus.

9. OK (OK)

- Video Mode:
 - Short press to switch the screen display mode.
 - Long press to manually turn on/off the camera.
- Playback Mode: Confirm the selection.
- In the Menus: Confirm the selection.

10. GPS BRACKET

Install the bracket to the mounting socket.

11. DUST COVER

USB port and memory card slot located under the dust cover. It helps to keep the components free of dust or other contaminants.

12. USB TYPE-C PORT

Connect the USB cable or the USB cable of the Rear View camera here.

13. SD CARD SLOT

Insert microSD memory card here.

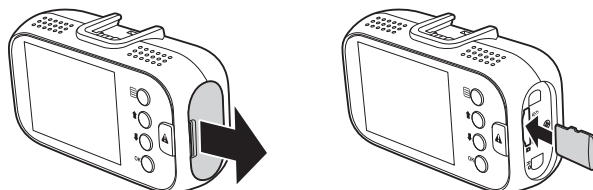
14. USB TYPE-C PORT

Connect the car power cable here.

INSTALLATION

INSERTING THE MEMORY CARD

Remove the dust cover. Then insert the memory card with the gold contacts facing to the front of the camera. Make sure to push the memory card until it clicks into place.



NOTE:

- Do not remove or insert the memory card when the camera is turned on. This may damage the memory card, or recordings within.
- The microSD card is sold separately. The microSD card must have a Class-10 or UHS-1 rating or better, and a capacity between 16GB and 256GB.

Recording Time

The camera supports microSD card up to 256GB.

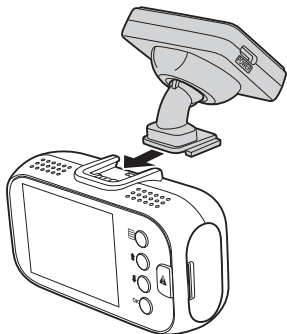
Card Capacity	Mode & FPS						
	4K @30fps	2K @60fps	2K @30fps	1080P @60fps	1080P @30fps	720P @60fps	720P @30fps
32G	2H	2H 15Min	4H 35Min	3H 45Min	6H 40Min	9H 20Min	17H
64G	4H	4H 30Min	9H 10Min	7H 30Min	13H 20Min	18H 40Min	34H
128G	8H	9H	18H 20Min	15H	26H 40Min	37H 20Min	68H
256G	16H	18H	36H 40Min	30H	53H 20Min	74H 40Min	136H

Card Capacity	Mode & FPS		
	4K/30fps+1080P/30fps	2K/30fps+1080P/30fps	1080P/30fps+1080P/30fps
32G	1H 30Min	2H 35Min	3H 15Min
64G	3H	5H 10Min	6H 30Min
128G	6H	10H 20Min	13H
256G	12H	20H 40Min	26H

INSTALLING IN VEHICLES

To securely mount the camera on the windshield, do the following:

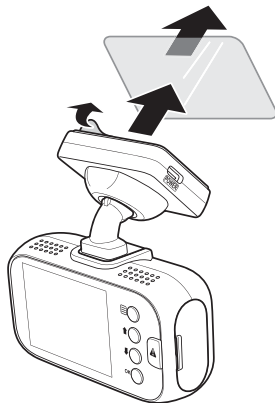
- 1 Attach the GPS bracket to the camera. Slide it into the mounting socket until you hear a click.



- 2 Wipe clean the chosen area of the windshield with a dry cloth. Then attach the window sticker onto the windshield.
- 3 Peel off the adhesive cover layer from the GPS bracket. Then place and press down the bracket firmly onto the attached window sticker.

- 4 Adjust the camera position is necessary.

Ensure that the road ahead is at the centre of the image and clearly visible on the camera screen.

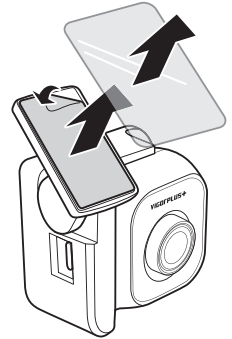


Installing the Rear View Camera

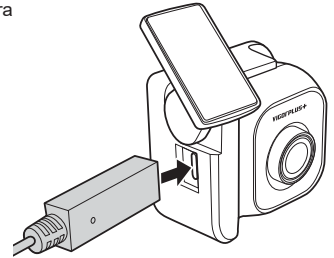
NOTE:

V26X dash cam can only work with V26R.

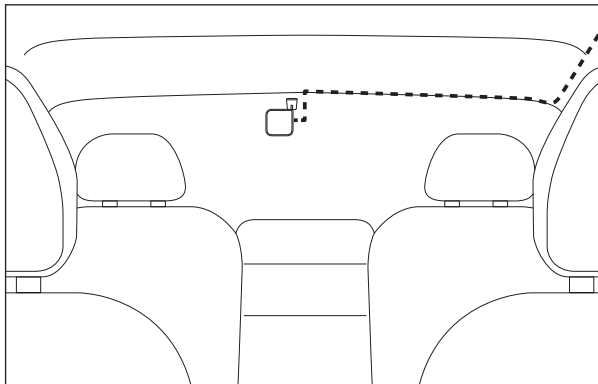
- 1 Wipe clean the chosen area of the rear window with a dry cloth. Then attach the window sticker onto the rear window.
- 2 Peel off the adhesive cover layer from the mounting bracket. Then place and press down the bracket firmly onto the attached window sticker.



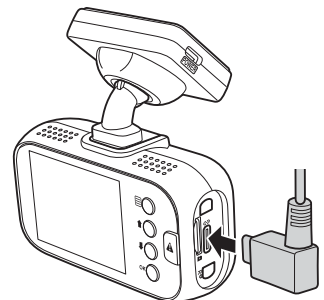
- 3 Connect one end of the USB cable to the USB port of the Rear View camera (V26R).



Make sure the remaining cable routing is properly secured in your vehicle.



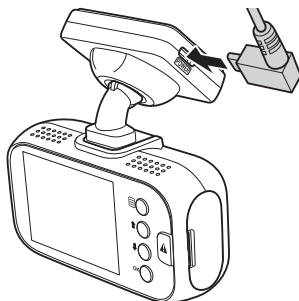
- 4 Connect the other end of the USB cable to the USB port of the camera.



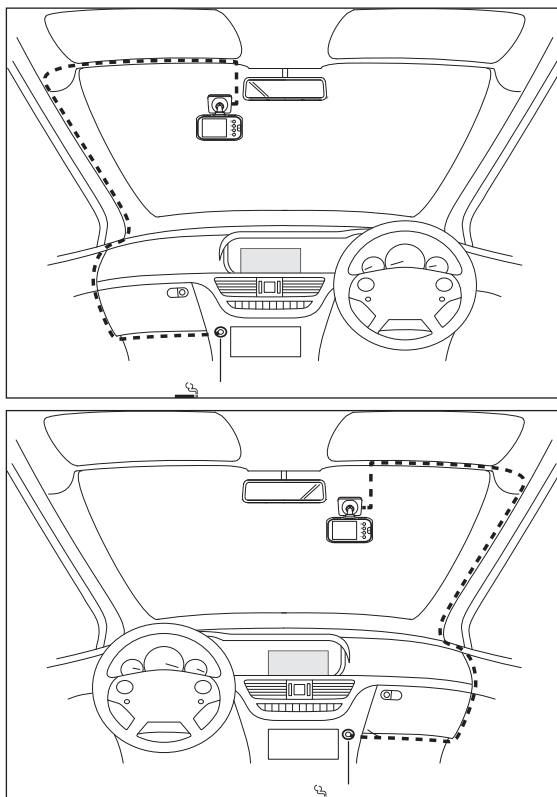
Connecting to Power

Use only the supplied VIGORPLUS car adapter to turn on the camera.

- 1 Connect one end of the car adapter to the USB port of the GPS bracket.



- 2 Route the car adapter around the windshield to the 12-24Vdc socket, ensuring that your view is not obstructed, and that the adapter is not a distraction. Then plug the other end of the car adapter to the 12-24Vdc outlet of your vehicle.



Once the vehicle engine is started, the camera automatically turns on and starts recording.

Powering On/Off the Camera Manually

To manually turn on/off the power, press and hold the **OK** button for at least 3 seconds.

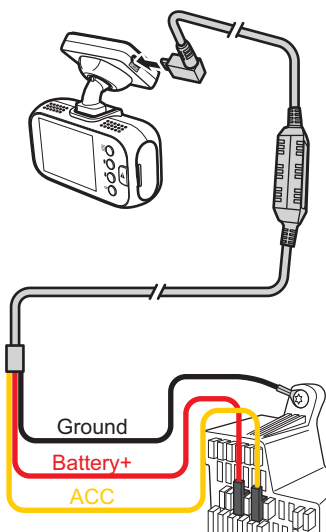
NOTE:

- Your Dash Cam is shipped with the *Screen Saver* function set to Default OFF. This is for ease of initial setup. Once setup is complete, the screen saver should be set to 15 seconds, in order to blank the screen completely whilst driving. This avoids any potential distraction and may be a legal requirement in some countries.
- It is recommended to position your Dash Cam on the passenger side of the car, behind the rear view mirror, as shown above. Whilst the camera needs to be located in a position within the wiper swept area, do not allow the camera to obstruct your vision of the road ahead. Recommended position is no more than 40mm within the wiper swept area. Do NOT mount the camera directly in front of the driver.
- Do not place the Dash Cam in such a way that it may interfere with the deployment of air bags or other safety equipment.
- Adjust any settings or review the recordings whilst stationary, not whilst driving.
- In vehicles where the 12V / 24V output remains on when the ignition is turned off. Please disconnect the camera when not in use.
- When using the camera for the first time, make sure to set the correct date and time settings.

Installing Smart Hardwire Kit

Warning! Do not connect the **red** and **yellow** wires into the same fuse slot.

- 1 Locate the fuse box of your vehicle.
The fuse box location varies depending on your vehicle type.
- 2 Connect the **red** wire to the positive electrode of the fuse adapter.
- 3 Connect the **black** wire to the metal (ground-negative electrode).
- 4 Connect the **yellow** wire to the ACC power supply.

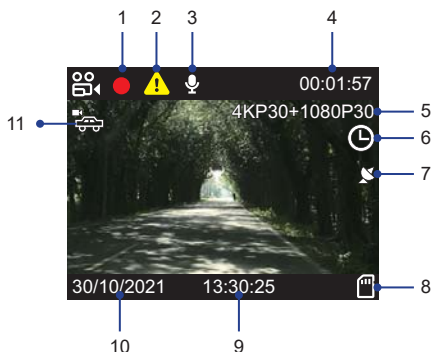


NOTE:

Please be noted the smart hardwire kit will stop working when car battery voltage is too low, it's to prevent over consuming of car battery.

VIDEO MODE

The key below explains the various information displayed on the screen when the camera is in Video mode. Some icons will only be displayed once the relevant function has been selected within the OSD menu, as described below.



1. Recording Status (Blinking Red Icon)

Indicate the video recording is in progress.

2. Emergency Recording

Press the  button to activate the Emergency recording.

3. Audio Recording ON

Press the  button to mute the recording. It also can be switched OFF in the OSD menu.

4. Recording Time

Display the length of current recording.

5. Resolution

Display the current video resolution.

6. Time-Lapse Recording ON

Can be switched OFF in the OSD menu.

7. GPS Reception Status

Indicate the camera is receiving the GPS signal.

NOTE:

If no GPS signals are received after the camera is turned on, a "No GPS" message will appear on the screen.

8. SD Card

Indicate the microSD card is properly inserted into its slot.

9. Time

Display the current time. This setting can be adjusted in the OSD menu.

10. Date

Display the current date. This setting can be adjusted in the OSD menu.

11. Parking Mode ON (Normal Mode (🚗)) / Intelligent Mode (🚗🔍)

Can be switched OFF in the OSD menu.

NOTE:

This option will automatically disable when the time-lapse recording is activated.

NORMAL RECORDING

When the vehicle engine starts up, the camera automatically turns on and starts recording. Recording will automatically stop when the engine is switched off. Or, long press the **OK** button to stop recording manually.

Taking Snapshots

During video recording, long press the **↓** button to take snapshot of the current scene.

Single/Dual Camera Display

- Single channel:
Press the **OK** button to turn on/off the screen.
- Dual Channel:
Press the **OK** button to toggle screen view:
 - ✓ Front + Rear View camera overlaid



- ✓ Front camera only
- ✓ Rear View camera only
- ✓ Screen off

EMERGENCY RECORDING (FILE PROTECTED)

Emergency recording will be activated under the following two situations.

1. G-Sensor event recording: During video recording, if the dash camera detects an impact, it will automatically activate the emergency recording mode.

- If the G-Sensor sensitivity is set to "High Sensitivity", even minor shocks will be detected.
- If the G-Sensor sensitivity is set to "Low Sensitivity", it will only detect the significant shocks.
- G-Sensor sensitivity can be adjusted in the OSD menu. See page 18, 30, or 40.

2. Manual emergency recording:

- During video recording, press the **⚠** button to activate the emergency recording (File Protected) function manually.
- During non-video recording (i.e. in the Playback mode or the OSD menu), press the **⚠** button to activate the emergency recording function manually.

NOTE:

An **⚠** icon will appear on the screen to indicate the *Emergency Recording* is in progress.


More information about File Protection/Emergency Recording:

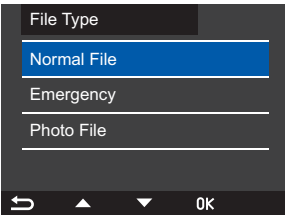
- If the file protection/emergency recording starts at the beginning 15 seconds of recording file, both current file and previous recording file will be protected.
- If the file protection/emergency recording starts at the final 15 seconds of recording file, both current file and next recording file will be protected.

AUTO REPAIR



If the microSD card is unexpectedly removed or power outage, the last recorded video may not be saving correctly and cannot be played on the computer. When re-insert microSD card back to the camera and it is turn on, the system will automatically repair the abnormal video file, so that it can be played normally.

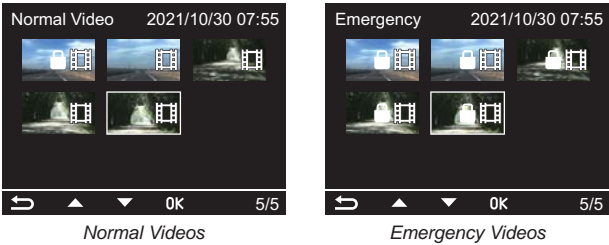
PLAYBACK MODE

During video recording, press the  button to enter the Playback mode. Then press the  or  button to select the file category that you want to browse and press the **OK** button.







PLAYING VIDEOS

Press the  or  button to browse the desired video file. Then press the **OK** button to view the video in full screen.

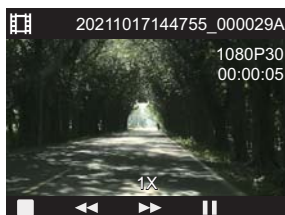


Preview Mode



- Press the  button to delete the selected file.
A confirmation message appears on the screen. Select **OK** to confirm deletion.
NOTE:
You cannot delete the protected files.
- Press the  button to protect the selected file. A lock icon () will appear on the screen to indicate that the file is protected.
To unprotect the file, press the  button again.
- Press the **OK** button to play the video.

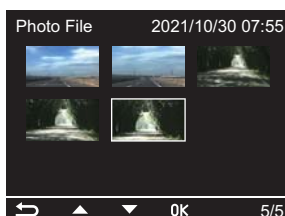
Playback Mode



- Press the **⏮** button to rewind the video playback. Press the **⏮** button again to toggle the playback speed.
- Press the **⏭** button to fast forward the video playback. Press the **⏭** button again to toggle the playback speed.
- Press the **⏸** button to pause the video playback. To resume, press the **⏸** button again.
- Press the **⏹** button to stop the playback.

VIEWING PHOTOS

Press the **⏮** or **⏭** button to browse the desired photo file. Then press the **OK** button to view the photo in full screen.



Preview Mode




- Press the **⏮** button to delete the selected file.
A confirmation message appears on the screen. Select **OK** to confirm deletion.

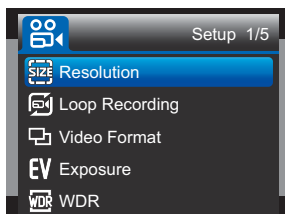
NOTE:




You cannot delete the protected files.

- Press the **⏮** button to protect the selected file. A lock icon (**🔒**) will appear on the screen to indicate that the file is protected.
To unprotect the file, press the **⏮** button again.

MENU AND SETTINGS

Press the  button to enter the OSD menu.



In general, use the  or  button to select an option and press the **OK** button to confirm. To return to the previous page, press the  button.

MENU OPTIONS

Resolution

Select the recording resolution, this will increase or decrease the quality of the recorded videos.

Loop Recording

Select the recording time for the individual video files. Once the microSD card is full, the camera will automatically replace the oldest files with new files in a loop to allow continuous recording.

Video Format

Select the video format.

Exposure

Adjust the exposure level for different light conditions.

WDR (Wide Dynamic Range)

Dynamic range is the ratio of the brightest portion of the image to the darkest portion of the image. When enabled, the system records more details in the shadows while not over-exposing the bright areas. The downside is reduced contrast, the image may look less natural but records more information.

Parking Mode

(Only available with optional hardwire kit connected)

Select the parking mode type.

- **Off:** Disable the *Parking Mode* function.
- **Normal Mode:** Perform the interval recording when in *Parking Mode*. When the camera is on and then the car is detected to be switched off (after ACC if power off), the system will automatically switch the recording mode from Normal recording mode to Time-Lapse recording mode.
Video files can be selected by different frame rate. Available option: Off, 1fps, 2fps, 5fps, or 10 fps.
- **Intelligent Mode:** Activate the **Intelligent Mode** when in *Parking Mode*. When the camera is on and then the car is detected to be switched off (after ACC if power off), the system will automatically trigger the emergency recording when the camera detects an impact or object movement.

NOTE:

If no event is detected after 1 minute, the camera will return to Standby mode.

Speed Unit

Select whether to record and display speed in KM/H or MPH.

G-Sensor

Select the sensitivity level of the G-Sensor. The G-Sensor detects forces which will protect the current recording in the event of a collision. The higher the G-Sensor sensitivity, the less force will be needed to trigger automatic file protection in event of a collision.

Date Stamp

Turn on/off the date stamp shown on the recorded files.

GPS Info Stamp

Turn on/off the GPS co-ordinates and speed stamp shown on the recorded files. When a recording is viewed using the third party GPS players, both the GPS co-ordinates and speed information remain available.

Record Audio

Turn on/off the microphone for video recording.

Screen Saver

Turn on the Screen Saver function to turn off the screen after a chosen period of inactivity. Press any button to reactivate the screen. If the setting is set to **Off**, the LCD screen will always be on.

Date/Time

Adjust the date and time settings.

Time Zone

Select the time zone of your country.

Language

Select your preferred language.

Beep Sound

Turn on/off the beep that sounds when a button is pressed.

Frequency

Set the frequency setting according to the power supply specification used in your country or geographical region. Choosing the correct value will reduce flickering caused by incandescent/fluorescent lamps at night time. The LED traffic lights may still flicker as these use different frequencies.

Format

Format the inserted microSD card. This will delete all content.

Warning! This operation will delete all existing data on the microSD card, including locked files and normal looping recording files! Make sure you back up any important files first.

Format Warning

Turn off or select the duration to remind user to format the microSD card.

Default Setting

Reset the camera to the factory default settings.

Time-Lapse Recording

Disable the time-lapse recording function or select the frame rate for time-lapse video.

Available frame rate option: 100 ms, 200 ms, 1 Second, 2 Seconds, 5 Seconds, 10 Seconds, 30 Seconds, or 1 Minute.

Firmware Version


Display the version number of the currently installed firmware.

UPDATING THE FIRMWARE**For V263(W)/V262(W)**

- 1 Download the latest firmware from VIGORPLUS website (www.vigorplus.com.tw/en/), and prepare a microSD card.
- 2 Upzip the zipped file and store the firmware ("FWV262.bin" or "FWV263.bin") into the root directory of the memory card.
- 3 Turn off the camera and insert the memory card into its slot.
- 4 Turn on the camera. The firmware upgrade process will start automatically and may take a few minutes to complete. Once the process is complete, the camera will restart automatically.

NOTE:

During the upgrading process, the LED indicator will blink.

- 5 Press the  button and select **Format** to format the memory card.
- 6 Restart the camera by pressing the **OK** button. See the "Powering On/Off the Camera Manually" section on page 12.

For V26R

- 1 Download the latest firmware from VIGORPLUS website (www.vigorplus.com.tw/en/), and prepare a microSD card.
- 2 Upzip the zipped file and store the firmware ("EthcamTxFW.bin" and "EthcamTxFW.update") into the root directory of the memory card.
- 3 Turn off the camera and insert the memory card into its slot.
- 4 Turn on the camera, and then insert **V26R** to **V263/V262**.

After both recording screens appear, press the **OK** button to start updating the firmware. The "Tx Start Update FW..." message will appear on the screen.

NOTE:

For more information on installing and connecting the rear view camera, see the "Installing the Rear View Camera" section on page 10.

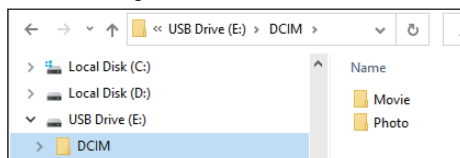
- 5 After the message disappears, the monitor will show both front/rear recording screens. This indicates the firmware had been updated. Please restart the camera.

PC CONNECTION

To view the recorded files on your computer, you can do either of the following:

- Remove the memory card from the camera. Then, insert the memory card to the computer memory card slot (if applicable). You can also use a card reader and plug it to the computer USB port.
- Connect the camera to a computer USB port by using the supplied USB cable.

Once connected, open a file browser and navigate to the microSD card.



The recorded files is automatically saved in two folders:

Movie: Normal loop recording video files. For the locked video files, you can find them in the **RO** subfolder.

Photo: Video snapshot files.

REVIEWING VIDEOS WITH GPS LOG

Software Installation and Registration

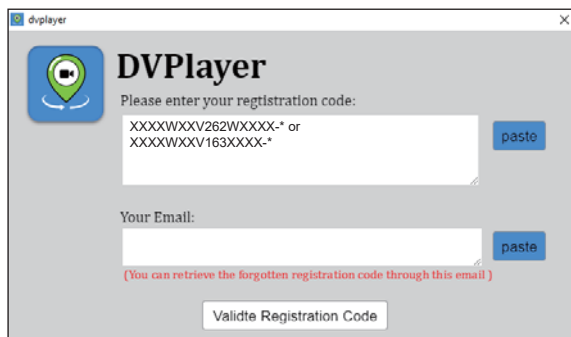
- 1 Download the third-party GPS Player software at www.dvplayer.net (available for Windows and Mac OS). Then follow the on-screen instructions to install to the software.
- 2 When launching the GPS Player software for the first time, you will be prompted to enter the registration code. Then click **Enter Registration Code** to continue.



NOTE:

You can obtain the registration code (the serial number) on the bottom of your device.

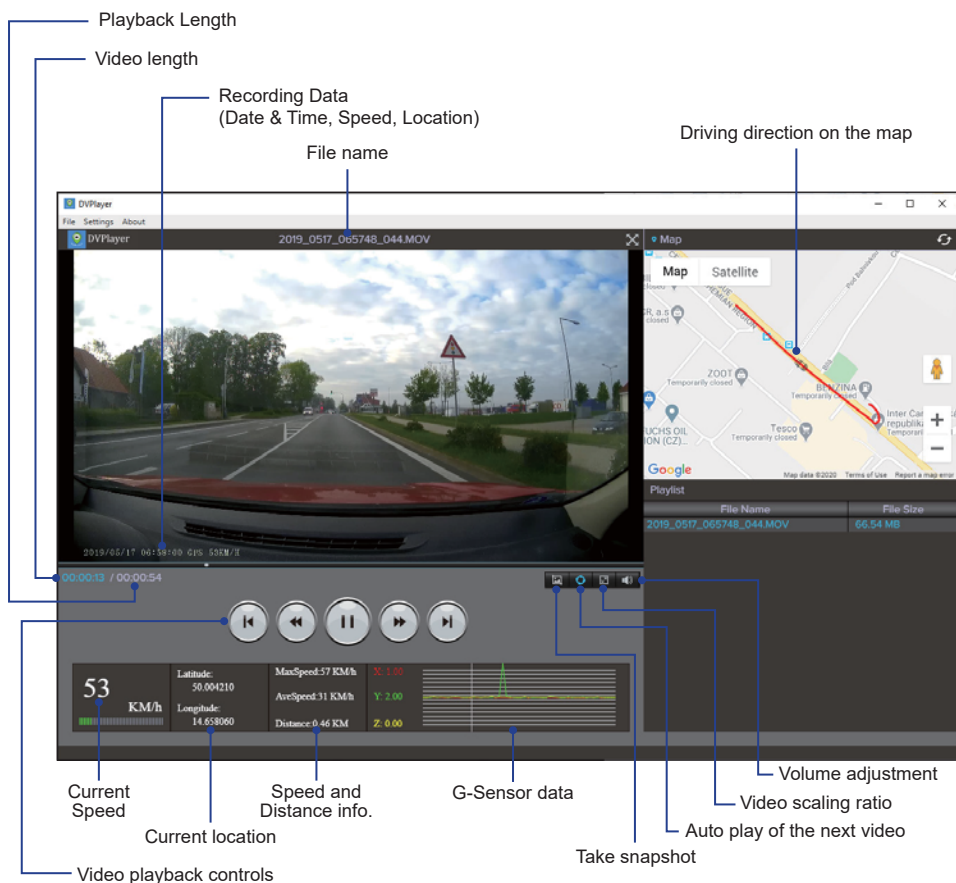
- 3 Enter the registration code and your email in the respective text boxes. Then click **Validate Registration Code**.



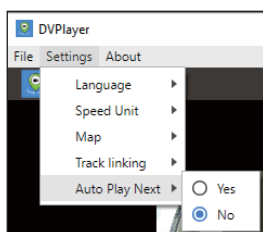
The software is now ready to use.

Video Playback and Viewing GPS Log

From the top panel, click **File > Open**. Then select the video that you want to view.



To configure the software playback settings, simply click **Settings** and perform the necessary changes.



My_Vcam APP (iOS)

INITIAL SETUP


Minimum System Requirement (Mobile Device): iOS 11

Installing the APP

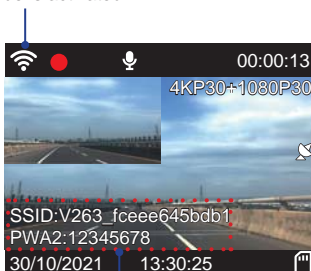
Use the "My_Vcam" keyword to search for the My_Vcam app from **App Store**. Then follow the on-screen instructions to download and install the App to your mobile device.



Connecting the Device to the App

- 1 On the camera, press and hold the  button for 3 seconds to switch to the Wi-Fi mode. Once the Wi-Fi mode is activated, the SSID and password will appear on the screen.

Wi-Fi mode is activated

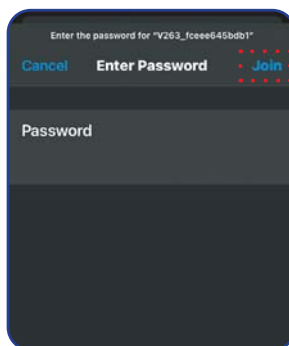
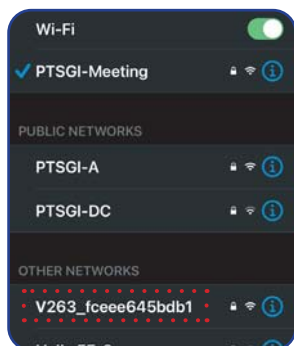


SSID and Password Info

- 2 On your mobile device, launch **Settings**. Then enable the Wi-Fi function.
- 3 Select V263_xxxxxxxxxxx and enter the password. Then tap **Join** to connect to the camera.

NOTE:

The default password is "12345678". To change the SSID or password, refer to "Wi-Fi Setting" on page 31.




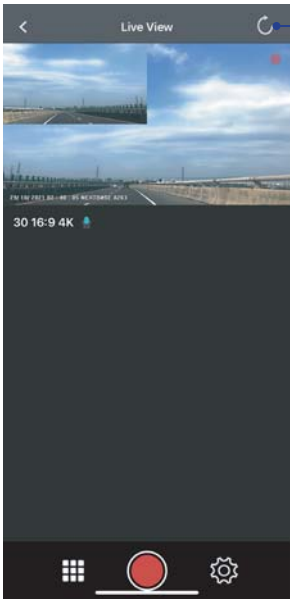
Once the connection is established, the Wi-Fi icon (📶) turns green. The SSID and password will disappear from the screen.





USING THE APP

Overview

- 1 On your mobile device, tap the  icon to launch the My_Vcam app.
- 2 Tap **CONNECT YOUR CAMERA** to enter the main screen. The live view is displayed on the screen.



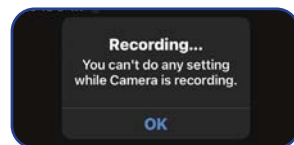
Tap to refresh the live stream.

To stop the video recording, tap . To continue, tap .

Viewing the Recorded Files

NOTE:

Before accessing the files, make sure to stop the video recording first. Otherwise, the reminder message will appear on the screen. Tap **OK** to dismiss the message.

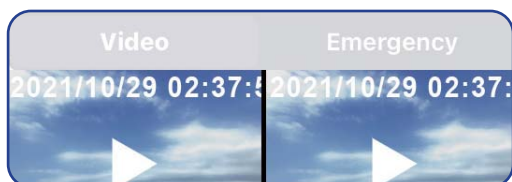





To view the recorded videos:

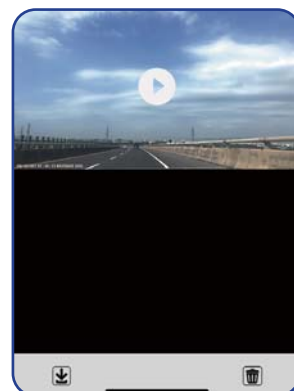
- 1 On the bottom panel, tap .



- 2 Select the video category (**Video** or **Emergency** tab) that you want to view.



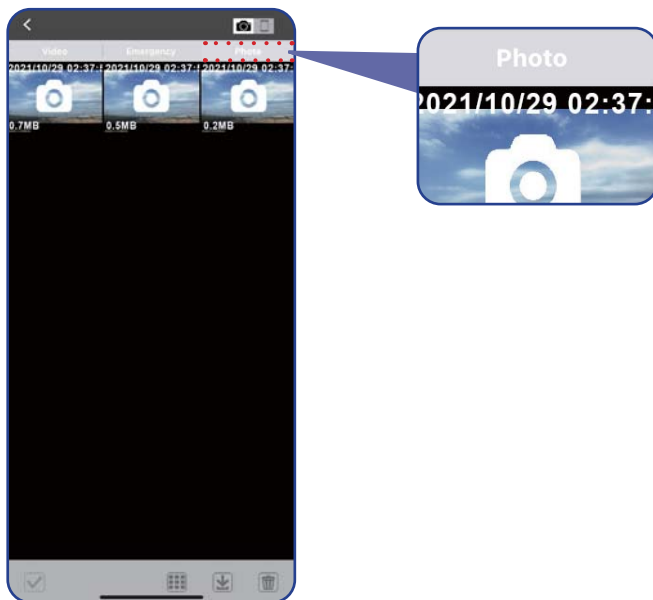
- 3 Select the desired video. Then tap  to start the play the video.
 - To pause during playback, tap . Then tap  to resume.
 - To exit the playback screen, tap **Done**.



VIGORPLUS+

To view the recorded photos:

- 1 On the bottom panel, tap . Then select the **Photo** tab.



- 2 Select the desired photo that you want to view.





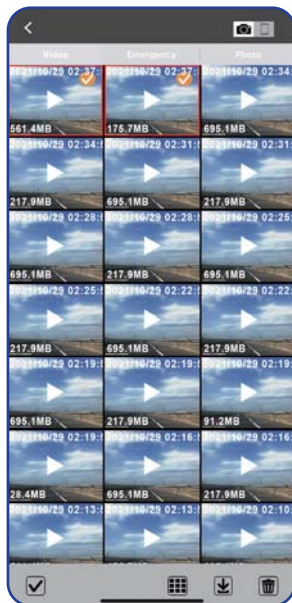
Managing the Recorded Files

NOTE:

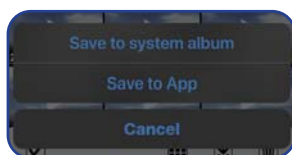
Before accessing the files, make sure to stop the video recording first. Otherwise, the reminder message will appear on the screen. Tap **OK** to dismiss the message.

To save the file(s) to your mobile device:

- 1 On the bottom panel, tap . Then select the video category (**Video** or **Emergency** tab) or **Photo** tab.
- 2 Tap ☒ and select the file(s) that you want to download. Then tap  to download the selected file(s).



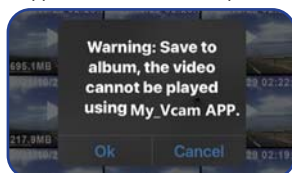
- 3 Select one of the following options:



- **Save to system album:** Save the file(s) to the system album (**Photos**) on your mobile device.

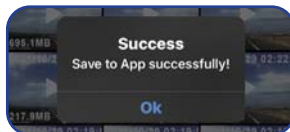
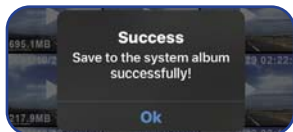
NOTE:

A warning reminder message will appear on the screen. Tap **Ok** to continue.




- **Save to App:** Save the file(s) to your mobile device (app). To view the downloaded files, refer to page 28.
- **Cancel:** Cancel the operation.




- After the saving process is complete, a "Success" message will appear on the screen. Tap **Ok** to return to the selection page.



NOTE:

You can also directly save the file while viewing the photo/video. Simply tap  to save the file.


To save all files to your mobile device:

- On the bottom panel, tap . Then select the video category (**Video** or **Emergency** tab) or **Photo** tab.
- Tap . Then tap  to select all files.





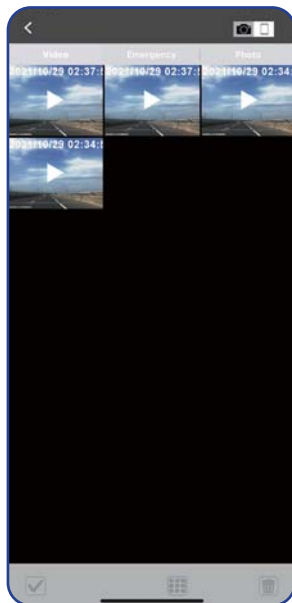
NOTE:

To deselect the files, tap  again.

- Tap . Then select **Save to system album** or **Save to App**.
- After the saving process is complete, a "Success" message will appear on the screen. Tap **Ok** to return to the selection page.

To browse the downloaded files:

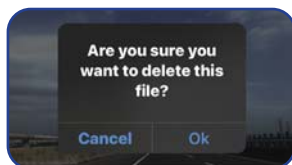
- 1 On the bottom panel, tap . Then tap  (on the top-right panel).
- 2 Select the video category (**Video** or **Emergency** tab) or **Photo** tab.






- 3 Select the file that you want to view.

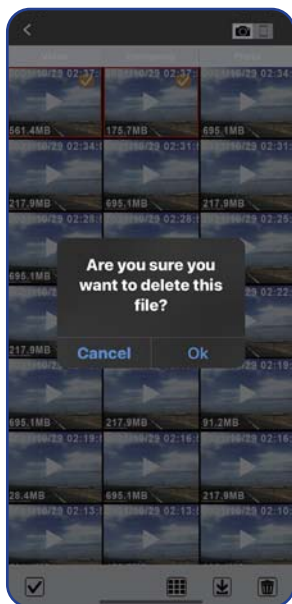
NOTE:

To delete the file, tap . When a confirmation message appears, tap **Ok** to continue.







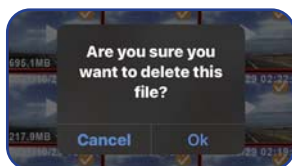
To delete the file(s):

- 1 On the bottom panel, tap . Then select the video category (**Video** or **Emergency** tab) or **Photo** tab.
- 2 Tap  and select the file(s) that you want to delete. Then tap  to delete the selected file(s).
- 3 A confirmation message will appear on the screen. Tap **Ok** to confirm the deletion.



To delete all files:

- 1 On the bottom panel, tap . Then select the video category (**Video** or **Emergency** tab) or **Photo** tab.
- 2 Tap . Then tap  to select all files.
- 3 Tap  to delete all files.
- 4 A confirmation message will appear on the screen. Tap **Ok** to confirm the deletion.



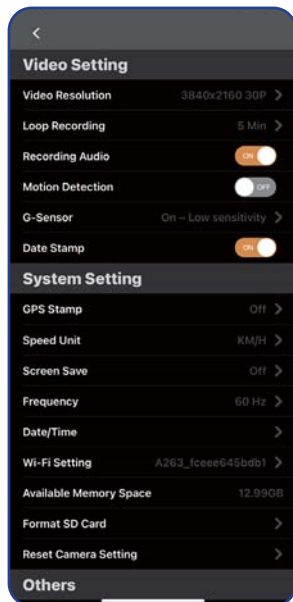
Configuring the Device Settings

NOTE:


Before configuring the device settings, make sure to stop the video recording first. Otherwise, the reminder message will appear on the screen. Tap **OK** to dismiss the message.

To configure the video or system related settings:

On the bottom panel, tap . Then select the desired option and adjust the necessary settings.



Menu Option	Description
Video Resolution	Select the recording resolution.
Loop Recording	Select the recording time for the individual video files.
Recording Audio	Turn on/off the microphone for video recording.
Motion Detection	Enable/disable the motion detection function.
G-Sensor	Select the sensitivity level of the G-Sensor.
Date Stamp	Turn on/off the date stamp shown on the recorded files.
GPS Stamp	Turn on/off the GPS co-ordinates and speed stamp shown on the recorded files
Speed Unit	Select whether to record and display speed in KM/H or MPH.
Screen Save	Turn on the Screen Saver function to turn off the screen after a chosen period of inactivity.
Frequency	Set the frequency setting according to the power supply specification used in your country or geographical region.
Date/Time	Sync the camera to your mobile device to automatically update the date and time settings. You can also manually adjust the date and time settings.

Menu Option	Description
Wi-Fi Setting	<div>Change the Wi-Fi network name (SSID) and the password.</div> <div></div>
Available Memory Space	<div>View the remaining storage space on the microSD card.</div>
Format SD Card	<div>Format the inserted microSD card.</div>
Reset Camera Setting	<div>Reset the camera to the factory default settings.</div>
App Version	<div>Display the app version number.</div>
Firmware Version	<div>Display the version number of the currently installed firmware.</div>

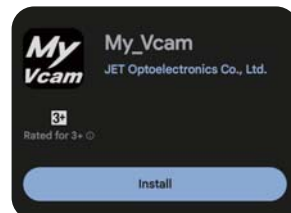
My_Vcam APP (Android)

INITIAL SETUP


Minimum System Requirement (Mobile Device): Android 4

Installing the APP

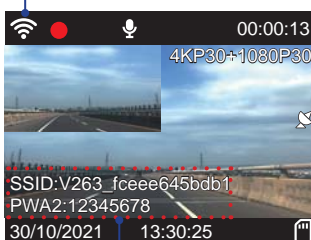
Use the "My_Vcam" keyword to search for the My_Vcam app from **Google Play Store**. Then follow the on-screen instructions to download and install the App to your mobile device.



Connecting the Device to the App

- 1 On the camera, press and hold the  button for 3 seconds to switch to the Wi-Fi mode. Once the Wi-Fi mode is activated, the SSID and password will appear on the screen.

Wi-Fi mode is activated

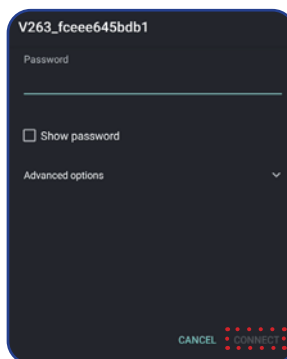
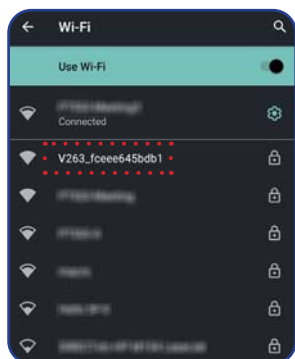


SSID and Password Info

- 2 On your mobile device, launch **Settings**. Then enable the Wi-Fi function.
- 3 Select V263_xxxxxxxxxx and enter the password. Then tap **CONNECT** to connect to the camera.

NOTE:

The default password is "12345678". To change the SSID or password, refer to "Wi-Fi Setting" on page 41.




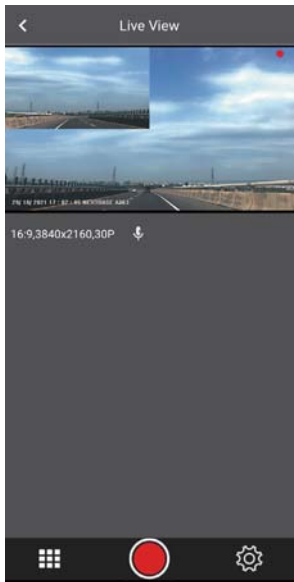
Once the connection is established, the Wi-Fi icon (📶) turns green. The SSID and password will disappear from the screen.





USING THE APP

Overview

- 1 On your mobile device, tap the  icon to launch the My_Vcam app.
- 2 Tap **CONNECT YOUR CAMERA** to enter the main screen. The live view is displayed on the screen.



To stop the video recording, tap . To continue, tap .

Viewing the Recorded Files

NOTE:

Before accessing the files, make sure to stop the video recording first. Otherwise, the reminder message will appear shortly on the screen.






To view the recorded videos:

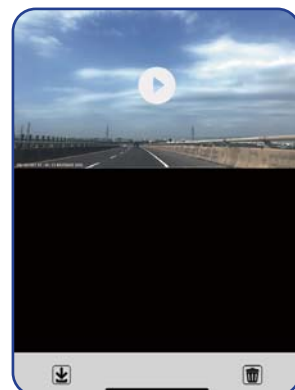
- 1 On the bottom panel, tap .



- 2 Select the video category (**Video** or **Emergency** tab) that you want to view.



- 3 Select the desired video. Then tap  to start the play the video.
 - To pause during playback, tap . Then tap  to resume.
 - To exit the playback screen, tap **Done**.



VIGORPLUS+

To view the recorded photos:

- 1 On the bottom panel, tap . Then select the **Photo** tab.



- 2 Select the desired photo that you want to view.






Managing the Recorded Files

NOTE:

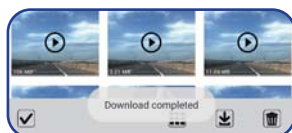
Before accessing the files, make sure to stop the video recording first. Otherwise, the reminder message will appear shortly on the screen.

To save the file(s) to your mobile device:


- 1 On the bottom panel, tap . Then select the video category (**Video** or **Emergency** tab) or **Photo** tab.
- 2 Tap  and select the file(s) that you want to download. Then tap  to download the selected file(s).






After the saving process is complete, a "Download completed" message will appear shortly on the screen.

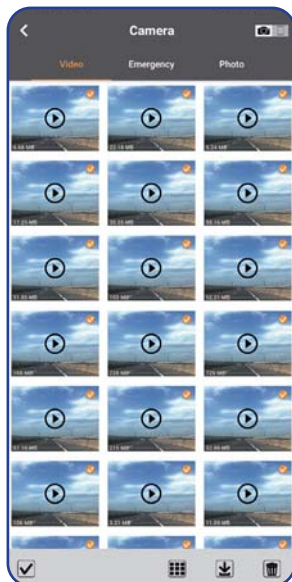


NOTE:


You can also directly save the file while viewing the photo/video. Simply tap  to save the file.

To save all files to your mobile device:

- 1 On the bottom panel, tap . Then select the video category (**Video** or **Emergency** tab) or **Photo** tab.
- 2 Tap . Then tap  to select all files.





NOTE:

To deselect the files, tap  again.

- 3 Tap , to download all files.

After the saving process is complete, a "Download completed" message will appear shortly on the screen.

To browse the downloaded files:

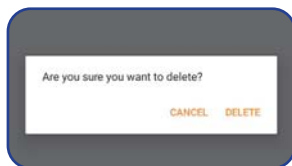
- 1 On the bottom panel, tap . Then tap  (on the top-right panel).
- 2 Select the video category (**Video** or **Emergency** tab) or **Photo** tab.






- 3 Select the file that you want to view.

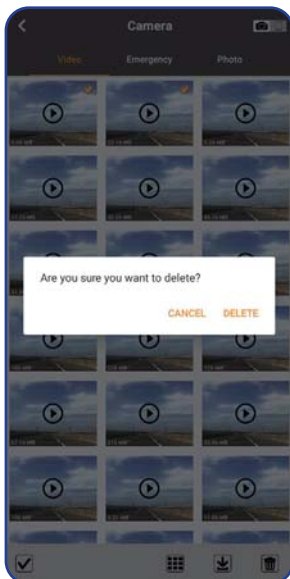
NOTE:

To delete the file, tap . When a confirmation message appears, tap **DELETE** to continue.







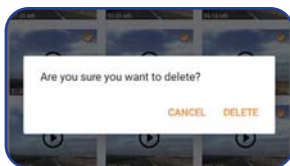
To delete the file(s):

- 1 On the bottom panel, tap . Then select the video category (**Video** or **Emergency** tab) or **Photo** tab.
- 2 Tap  and select the file(s) that you want to delete. Then tap  to delete the selected file(s).
- 3 A confirmation message will appear on the screen. Tap **DELETE** to confirm the deletion.



To delete all files:

- 1 On the bottom panel, tap . Then select the video category (**Video** or **Emergency** tab) or **Photo** tab.
- 2 Tap . Then tap  to select all files.
- 3 Tap  to delete all files.
- 4 A confirmation message will appear on the screen. Tap **DELETE** to confirm the deletion.



Configuring the Device Settings

NOTE:


Before configuring the device settings, make sure to stop the video recording first. Otherwise, the reminder message will appear shortly on the screen.

To configure the video or system related settings:

On the bottom panel, tap . Then select the desired option and adjust the necessary settings.



Menu Option	Description
Video Resolution	Select the recording resolution.
Loop Recording	Select the recording time for the individual video files.
Recording Audio	Turn on/off the microphone for video recording.
Motion Detection	Enable/disable the motion detection function.
G-Sensor	Select the sensitivity level of the G-Sensor.
Date Stamp	Turn on/off the date stamp shown on the recorded files.
Date/Time	Sync the camera to your mobile device to automatically update the date and time settings.
Speed Unit	Select whether to record and display speed in KM/H or MPH.
Screen Saver	Turn on the Screen Saver function to turn off the screen after a chosen period of inactivity.
Frequency	Set the frequency setting according to the power supply specification used in your country or geographical region.

Menu Option	Description
Wi-Fi Setting	<div>Change the Wi-Fi network name (SSID) and the password.</div> <div></div>
Available Memory Space	View the remaining storage space on the microSD card.
Format SD Card	Format the inserted microSD card.
Reset Camera Setting	Reset the camera to the factory default settings.
App Version	Display the app version number.
Firmware Version	Display the version number of the currently installed firmware.

TROUBLESHOOTING

Common troubleshooting tips that you may encounter while using the camera are listed in the table below.

Problem	Solution
The camera does not record.	<ul style="list-style-type: none"> Be sure to use a microSD card with the size of at least 8GB, Class 10. Format the memory card using the camera before its initial usage. Try with a new microSD card.
The camera does not loop record.	Check if the microSD card has enough free space. It may be full of locked files. All files can be deleted quickly by formatting the card in the camera.
Video is blurred.	Remove the protective lens cover (if any), clean the lens, or clean the windshield or rear window.
Video has no sound.	Ensure that the Record Audio setting is set to On . See page 18, 30, or 40.
Flicker appears in the recorded video.	Set the correct frequency setting according to the power supply specification used in your country or geographical region. See page 18, 30, or 40.
The screen blanks after a few minutes.	Adjust the Screen Saver setting. See page 18, 30, or 40.
The camera feels warm when it is operating.	It is common for the camera to feel warm under normal operation.
I have turned on the <i>Parking Mode</i> function and now the camera can't stop the recording.	<p>When the <i>Parking Mode</i> function is enabled, the camera will start a recording whenever motion is detected.</p> <p>To disable the function, firstly turn off the camera and remove the SD card. Then turn on the camera again and set the Parking Mode setting is set to Off within the OSD menu. See page 17.</p>
Video playback is really quick on my PC, not consistent with the driving scene that was recorded.	Set the Time-Lapse Recording setting is set to Off . See page 18.
Video playback is lagged.	To play the high resolution video (such as 4K/2K), your computer specifications is very important. If your computer does not meet the minimum requirements, you will experience lagging during video playback. It is recommended to play back the high resolution video with i7 CPU grade computer.
Video files cannot be played on my computer.	<ul style="list-style-type: none"> This can happen due to a bad quality microSD card or a corrupted card format. Please format or replace the microSD card. The video files may not be compatible with your computer if suitable playback software is not installed.
The camera beeps and indicates it was a failed card.	In general, the memory card lifespan for the camera is about six months and may be subject to data corruption or loss due to static electricity and/or external voltage. For this reason, we highly recommend user to copy and save important data to external media (HDD, USB drive, etc.). It is strongly recommended to format the memory cards to minimize memory card error.
Unresolved Issues	If the above problem persists, reset the camera to the default settings and try again. Otherwise, call your local support center.
Having problem with connecting the hardwire kit to the fuse box	<p>Ensure that the color-coded wires are properly connected:</p> <ul style="list-style-type: none"> GND = Black wire=Ground VCC = Red wire = Permanent live The camera will switch between <i>Normal</i> and <i>Parking</i> mode depending on alternator voltage or battery voltage. ACC = Yellow wire = Turned on when the vehicle engine on The camera will switch to <i>Normal</i> mode when it is turned on.

FCC Warning Statement

Changes or modifications not expressly approved by the party responsible for compliance could void the user's authority to operate the equipment. This equipment has been tested and found to comply with the limits for a Class B digital device, pursuant to Part 15 of the FCC Rules. These limits are designed to provide reasonable protection against harmful interference in a residential installation. This equipment generates uses and can radiate radio frequency energy and, if not installed and used in accordance with the instructions, may cause harmful interference to radio communications. However, there is no guarantee that interference will not occur in a particular installation. If this equipment does cause harmful interference to radio or television reception, which can be determined by turning the equipment off and on, the user is encouraged to try to correct the interference by one or more of the following measures:

- - Reorient or relocate the receiving antenna.
- - Increase the separation between the equipment and receiver.
- - Connect the equipment into an outlet on a circuit different from that to which the receiver is connected.
- - Consult the dealer or an experienced radio/TV technician for help.

This device complies with part 15 of the FCC Rules. Operation is subject to the following two conditions:

- (1) This device may not cause harmful interference, and
- (2) this device must accept any interference received, including interference that may cause undesired operation.

RF Exposure Statement

To maintain compliance with FCC's RF Exposure guidelines, This equipment should be installed and operated with minimum distance of 20cm the radiator your body.

This device and its antenna(s) must not be co-located or operation in conjunction with any other antenna or transmitter.