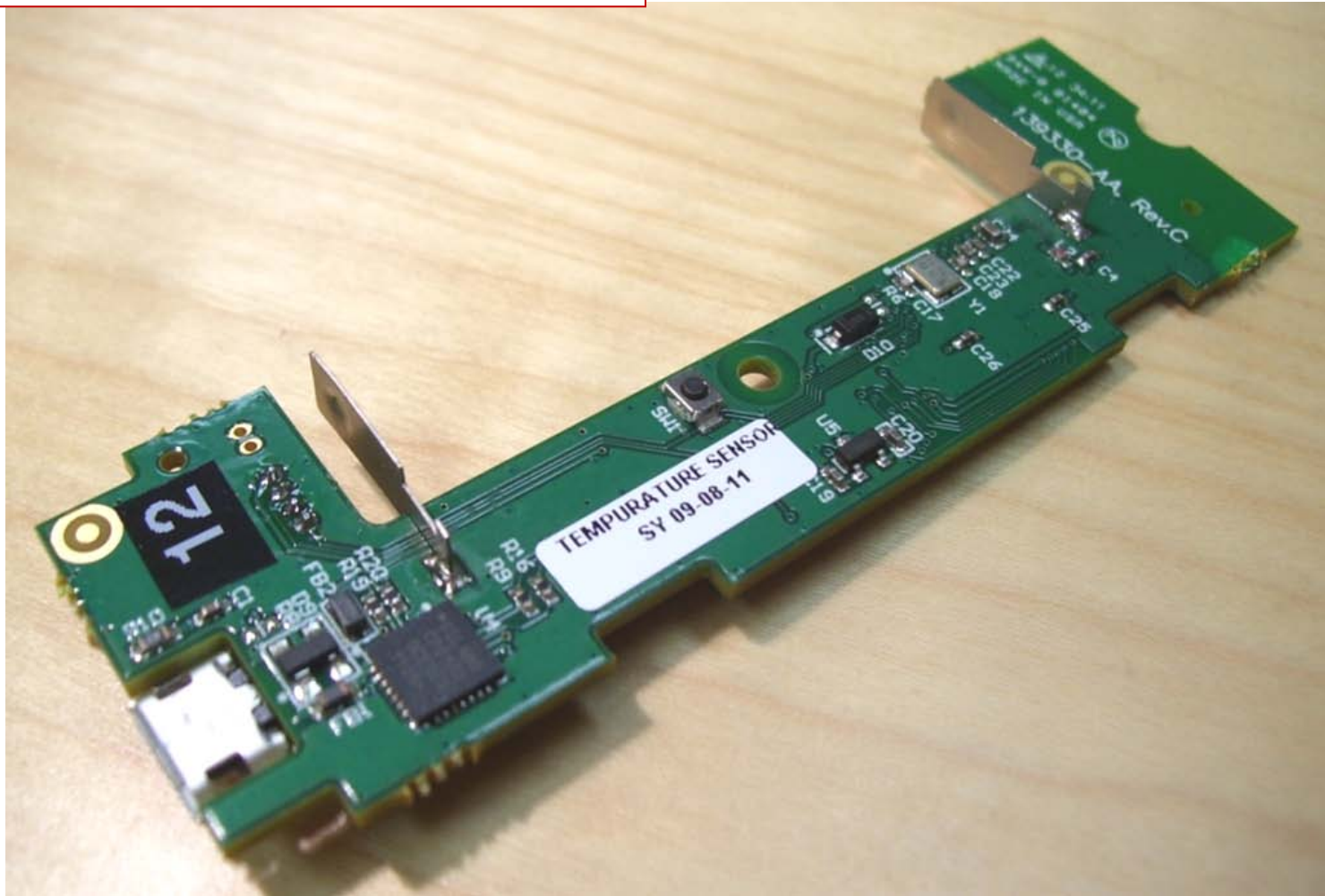
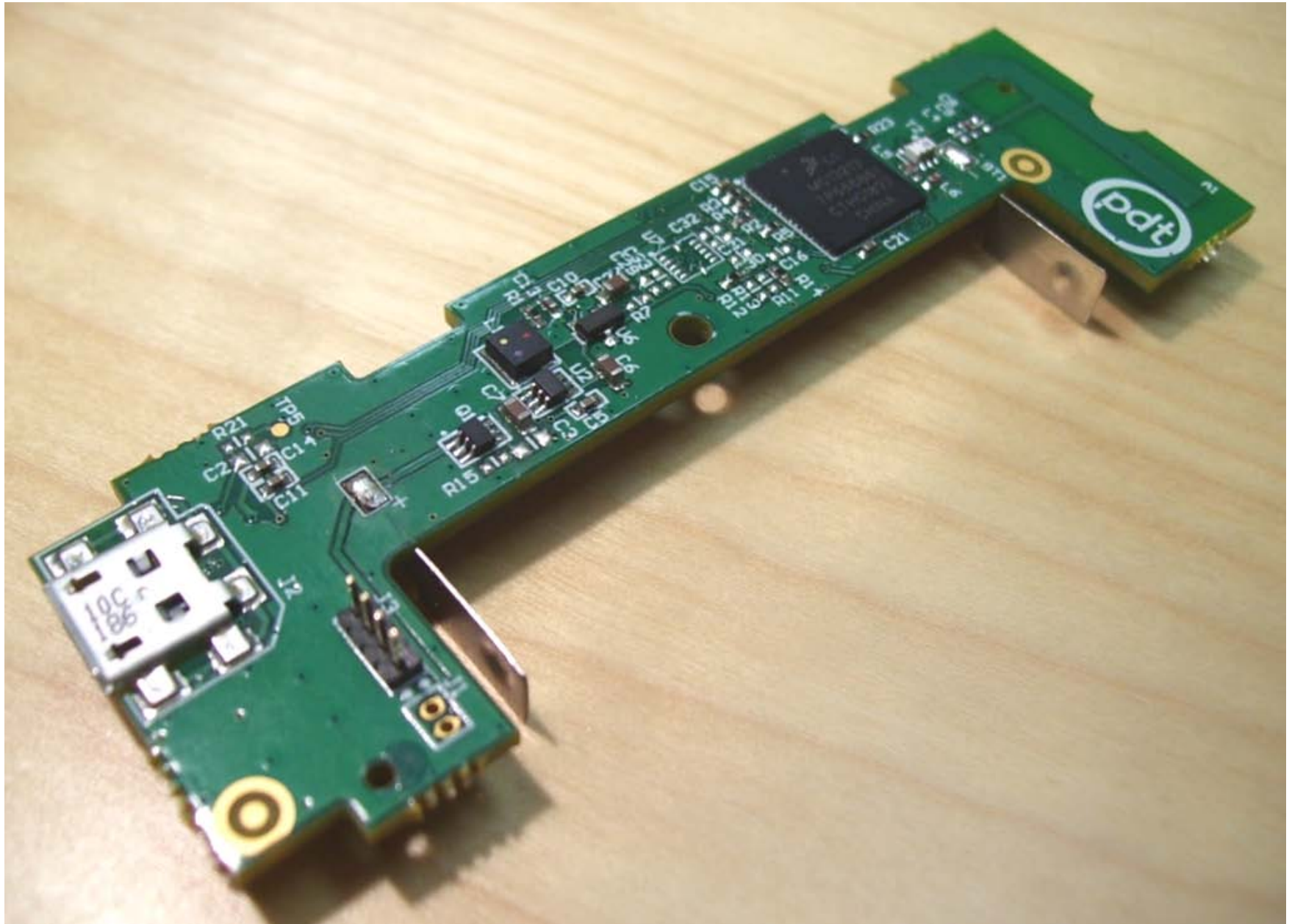


The Temperature Sensor is one variant of a generic board layout. The other variant is the Move/Stationary Sensor.

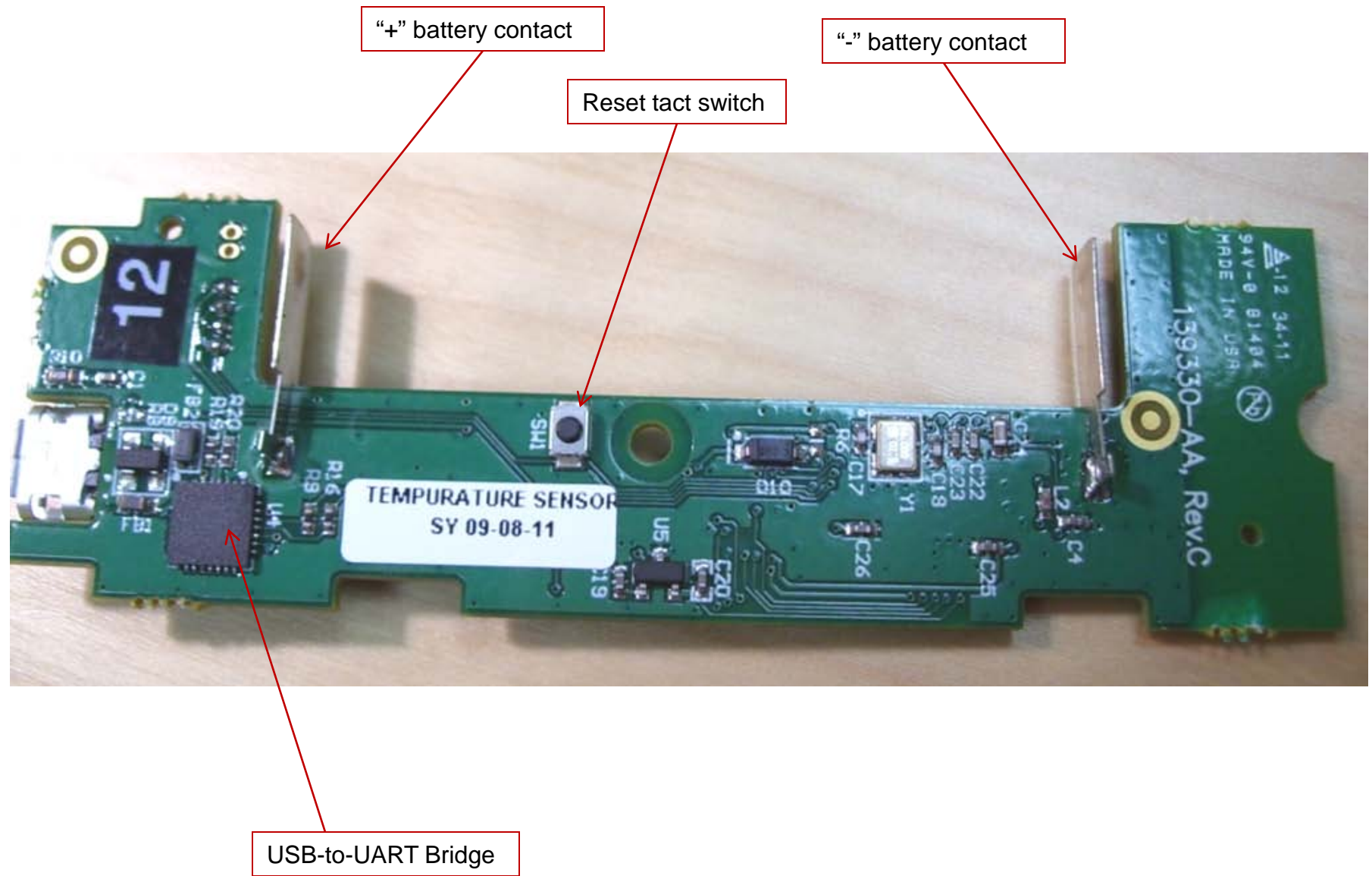
The two variants should be considered a family and registered per FCC ID Z3GITA1SENA



Temperature Sensor Board, Top Side



Temperature Sensor Board, Bottom Side



Temperature Sensor Board, Top Side

Micro USB connector

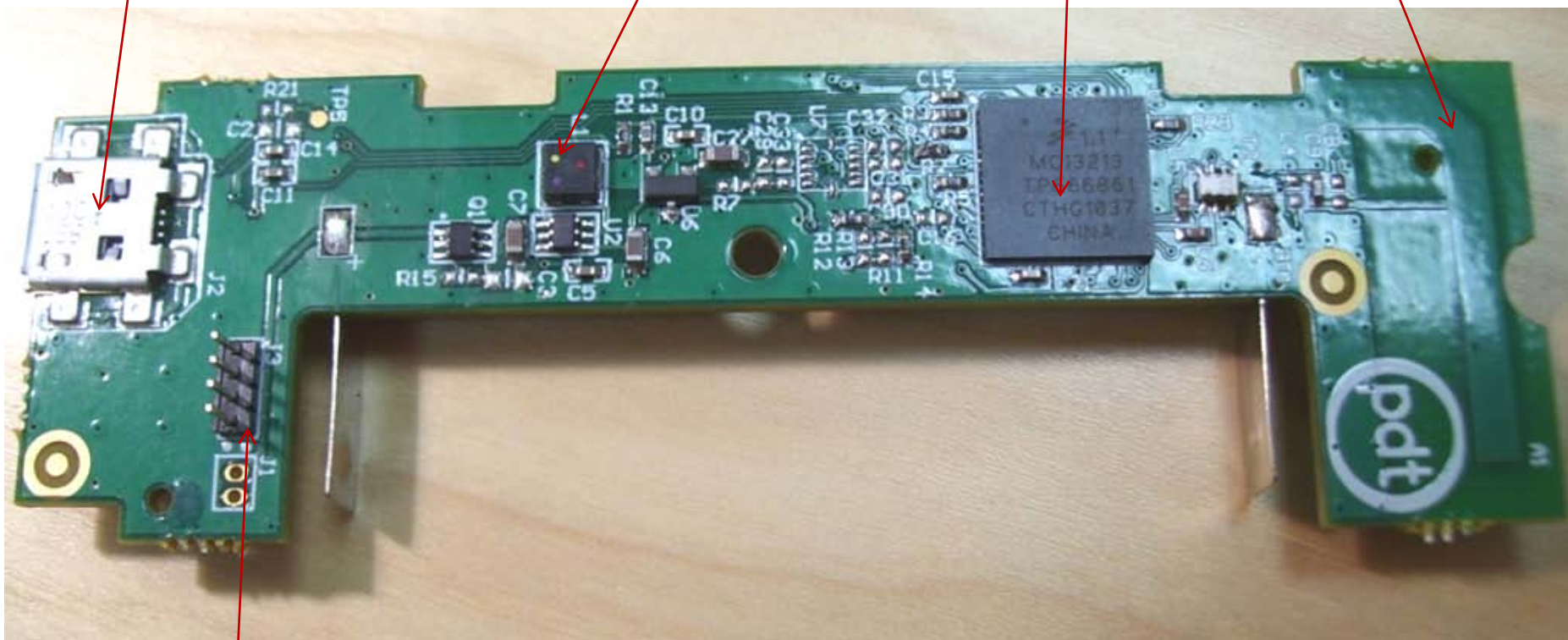
Power inductor,
Coilcraft EPL3015-472MLB

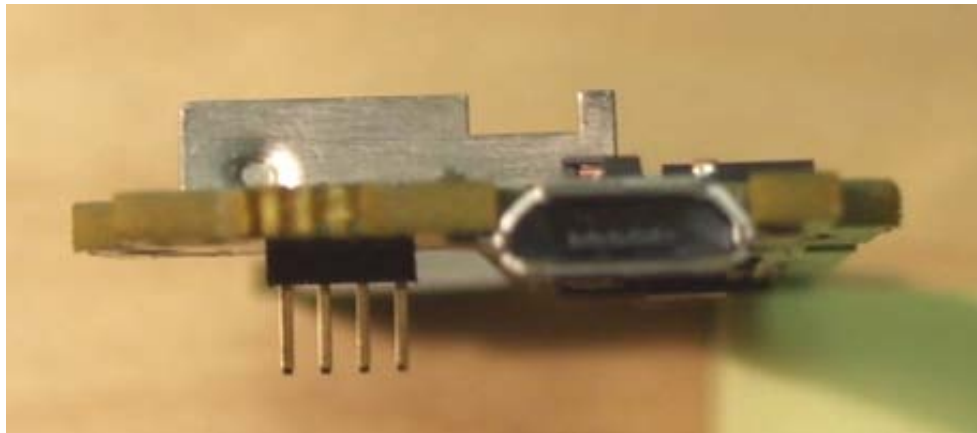
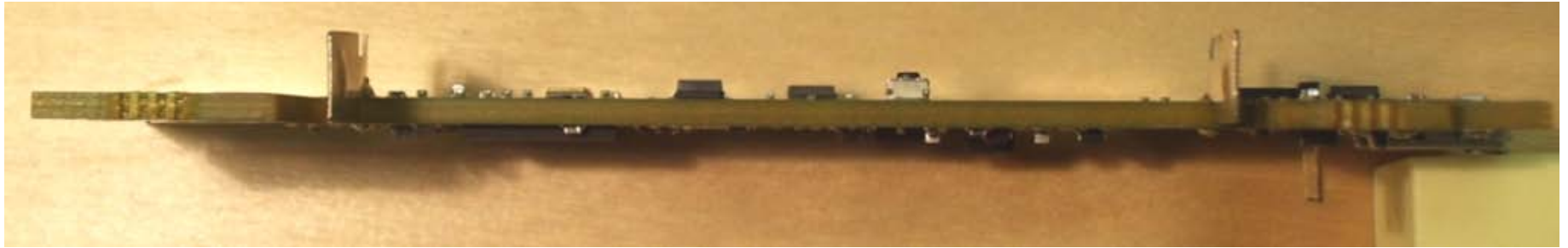
ZigBee 2.4 GHz radio,
Freescale MC13213

Integrated antenna for ZigBee,
inverted "F" pattern

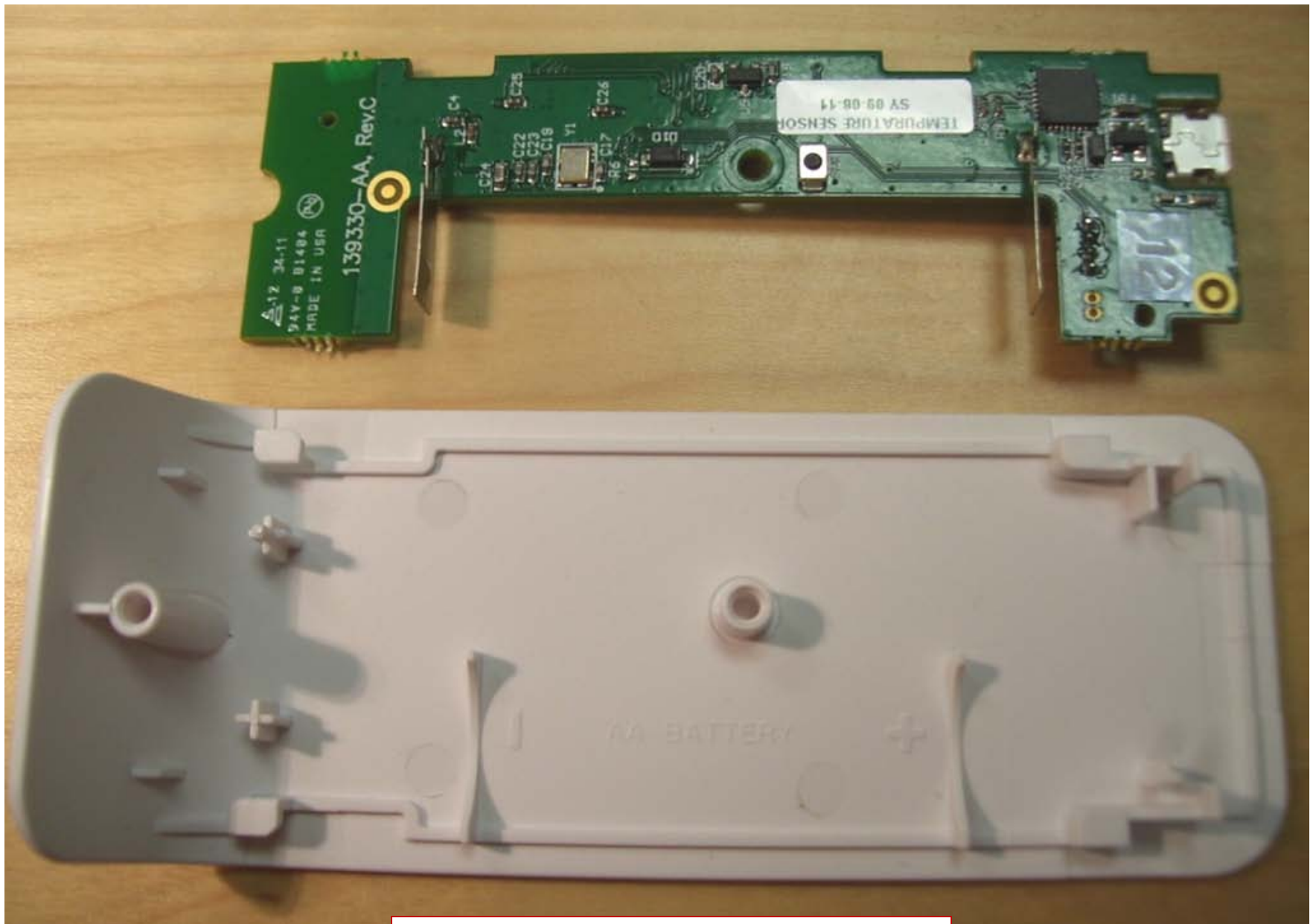
Header for
SW flash

Temperature Sensor Board, Bottom Side





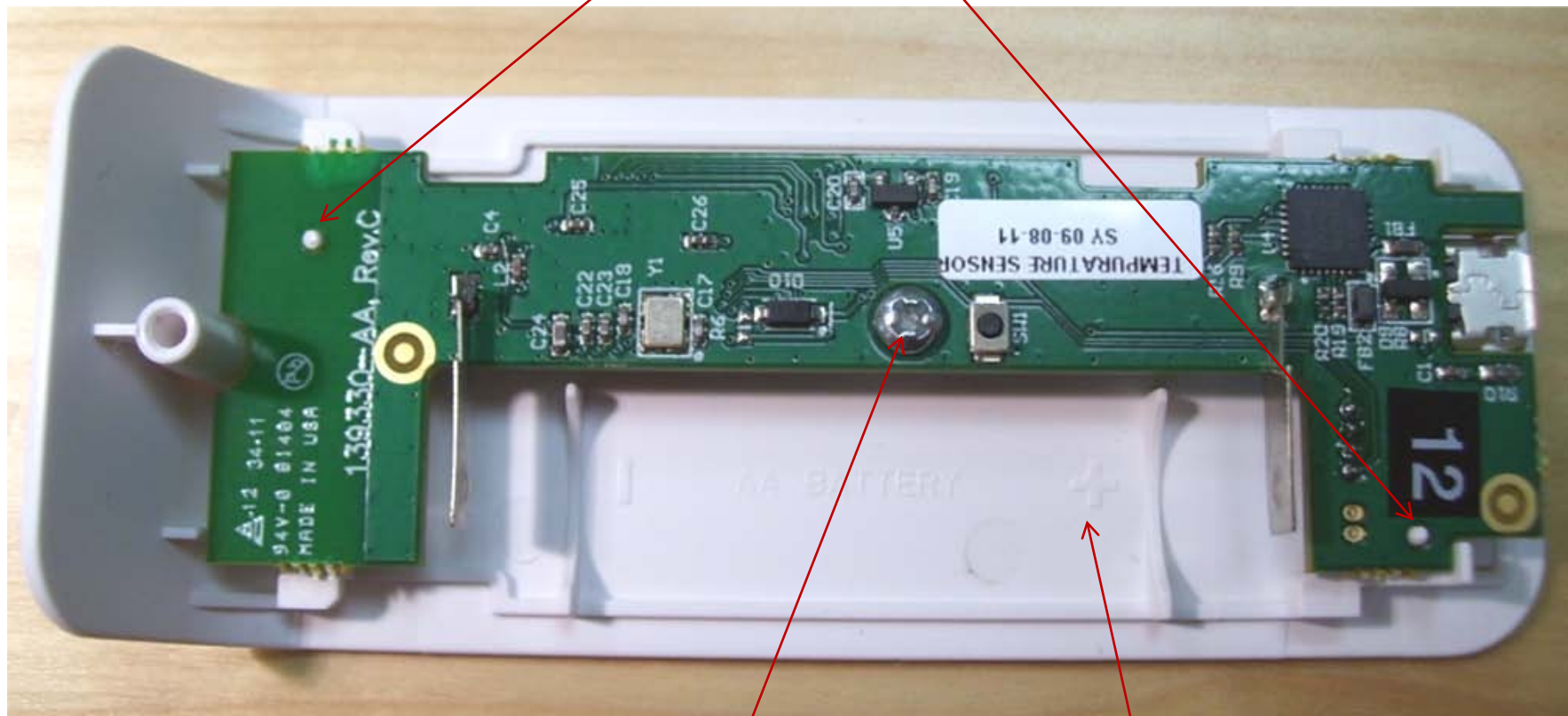
Temperature Sensor Board, Side and End Views



Front Housing is common to both Sensor variants

Temperature Sensor Board, Side and End Views

Locating posts in front housing
engage holes on pcb



Single mounting screw

Battery polarity markings
molded in plastic housing

Rear Housing is common to both Sensor variants

Rear housing has latching teeth which engage hooks on front housing

