

# Besstec Electronics (Zhongshan) Co., Ltd.

Yujing Industrial Park, No. 106, Qihao Road, Torch Development Zone, Zhongshan City, China

TEL : 86-760-88331776

FAX: 86-760-88331706

---

**October 08, 2011**

Responses to inquiry for the FM TRANSMITTER (FCC ID: Z37FM-A)

1) How does this device operate?

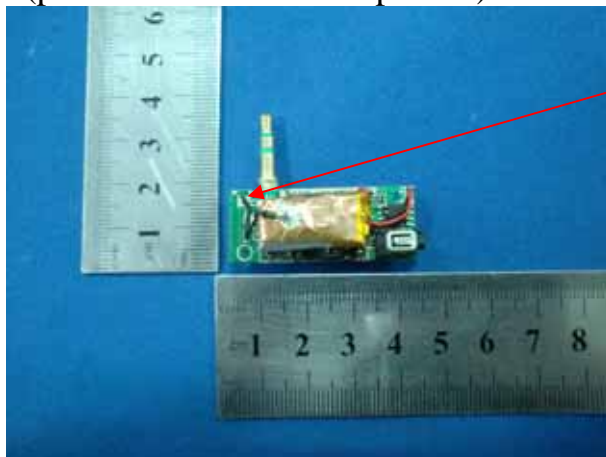
The device is operated as 88.1MHz -107.9MHz FM transmitter and powered by 3.7VDC.

It transmit the audio signal from a external audio source such as MP3 player by a FM transmitter tuned on 88.1MHz and the audio signal can be received by a common FM Broadcasting Radio which is tuned to the same transmitted frequency of the FM transmitter and regenerate the transmitted signal through the FM Broadcasting Radio.

2) Provide information on the device and its antenna.

Antenna is formed by a short copper wire soldered on the PCB.

(please see the attached picture)



Antenna

3) How is it installed?

It is very easy to install. It can connect to all device which has 3.5mm stereo audio output.

4) What test procedure was used?

ANCI C63.4:2003

## Besstec Electronics (Zhongshan) Co., Ltd.

Yujing Industrial Park, No. 106, Qihao Road, Torch Development Zone, Zhongshan City, China

TEL : 86-760-88331776

FAX: 86-760-88331706

---

5) If tested in a car, how was it configured?

Not tested in a car, it was tested in a semi-anechoic chamber.

6) Was the tuning range properly verified? The test lab should indicate in the report that the tuning controls were manually adjusted to verify maximum tuning range.

88.1-107.9MHZ.

7) Was the bandwidth properly tested with maximum audio input? The test lab should describe the audio input signal (use a typical audio file from a typical device) -

DO NOT use 1kHz tone from signal generator as specified under ETSI EN 301 357-1)

The maximum output Level of the typical device, ipod player is used.

Connect EUT use iPod playing typical audio signal ('Highway Blues' from sample music of windows XP) with maximum audio level

8) Does the device operate in a vehicle? Please state that this was verified.

It was not test in a vehicle.

9) Provide the test report

Provided.