

ENGL *mfx*



**Portable mp3
Player**

OWNER'S MANUAL

ENGL-MFX - This device has a serial number located on the rear panel.
Please record it and retain it for your records. Serial number:

Table of contents

1-Introduction.....	4	Dock-Connector.....	15
Main functions.....	4	4-Screen Overview.....	16
Supplied accessories.....	4	Home Screen.....	16
Recycling the rechargeable battery.....	5	Status Bar.....	16
Trademarks.....	5	Back Button.....	16
Notes about this manual.....	5	Level meter.....	17
2-Preparation.....	6	Elapsed time.....	17
About SD cards.....	6	Power indicator.....	17
Inserting the SD card.....	6	Main Menu.....	18
Removing the SD card.....	7	5-Making Connections.....	20
Powering the unit.....	8	Connecting monitors.....	20
Charging the battery.....	8	Connecting with a computer.....	20
Charging with a computer.....	8	Disconnecting from a computer.....	20
Charging with an AC adapter.....	8	Connecting a guitar.....	20
Turning the power on and off.....	9	6-Playback.....	21
Resetting the unit.....	9	Selecting tracks.....	21
3-Part Names and Functions.....	10	Starting and stopping playback.....	22
Top panel.....	10	Play a track.....	23
POWER key.....	10	Stop playback.....	23
SD card slot.....	10	Search forward and backward.....	23
Right side panel.....	11	Adjusting the volume.....	23
USB port.....	11	Loop/repeat setting status.....	23
Left side panel.....	12	7-Specifications.....	24
GUITAR IN jack.....	12	Audio Input and Output.....	24
HEADPHONE OUT jack.....	12	GUITAR IN input.....	24
Front panel.....	13	LINE In input.....	24
Display.....	13	LINE OUT output.....	24
Wheel.....	13	Audio performance.....	24
Rear panel.....	14	Audio file compatibility.....	24
Built-in stereo microphone.....	14	Physical.....	25
Bottom panel.....	15	Computer requirements.....	25
		Windows.....	25

Macintosh.....	25
Recomended USB host controller.....	26
Supported OS.....	26
Accessories available for purchase.....	26
8-FCC Compliance Statement.....	27

1-Introduction

1-Introduction

Thank you very much for purchasing the ENGL MFX Portable Player. Please read this owner's manual carefully in order to maximize your use of all the unit's features. We hope that you will enjoy using this player for many years to come. Please make copies of this manual and keep them in safe places for future reference.

Main functions

- Portable player designed for guitar players
- Uses an SD card as the playing media
- Choose MP3 (32 kbps–320 kbps, 44.1 kHz or 48 kHz) or WAV (16-bit or 24-bit, 44.1 kHz or 48 kHz) audio file types
- Mix the input signal with the playing audio track (overdubbing)
- Special playback functions include decreasing playback speed without changing pitch and reducing the sound of a recorded guitar during playback
- Built-in effects can be applied to the input signal, rhythm machine or playback signal
- Copy audio files from a computer to this unit's SD card by USB connection

Supplied accessories

Soft case	1
SD card (in unit; contains copy of manual)	1
USB cable	1
Quick Start Guide	1
Warranty card	1
Guitar cable 25 inch length	1
Guitar cable	1
Dock connector cable	1

Please contact the store where you purchased this unit if any of these accessories are missing or have been damaged during transportation.

Recycling the rechargeable battery

This device uses a lithium ion battery. Please do not throw away the battery when it is no longer necessary.

If you have any questions, please contact us (see the last page of this manual for contact information).

Trademarks

Windows, Vista, Windows XP and Windows 2000 are trademarks of Microsoft Corporation.

Macintosh, Mac OS, and Mac OS X are Trademarks of Apple Inc.

The SD Logo is a trademark.



Notes about this manual

Font use conventions

- Controls, keys and other parts on the ENGL-MFX are written like this: *MENU*.
- Messages shown on the display are written like this: *Are you sure?*
- We use the term “buttons” and “sliders” to describe the various icons on the ENGL-MFX.

Tracks and files are the same

Tracks are files, and files are tracks.

In this manual, we usually use the word “track” when we are describing the playback of a song, for example, just as we would if talking about songs on a CD or a portable music player. However, when we talk about their data properties, such as sampling frequencies and ID3 tags, we often refer to the same “tracks” as “files” because they can be manipulated in ways similar to files on a computer.

2-Preparation

2-Preparation

About SD cards

Since this unit uses a SD card for recording and playback, you must insert a SD card into the unit before use. You can use 64 MB–2 GB SD cards and 4 GB–32 GB SD HC cards with this unit.

Please see the ENGL web site (www.engl-amps.com) for information about cards that have been tested with the ENGL-MFX.

NOTE

When new, this unit comes with a 1GB SD card inserted. This card can be used for recording and playback as is. There is no need to reinsert or format it.

Inserting the SD card

The SD card slot is on the top side of the unit.

Insert the included SD card in the SD card slot and push it until it clicks fully into place.



Removing the SD card

Press the inserted SD card in gently and it will disengage from the unit so that you can pull it out completely.

CAUTION

Do not remove the SD card during recording or playback, or when the unit is connected to the computer by USB.



2-Preparation

Powering the unit

The ENGL-MFX can be operated using an AC adapter (E 1041). Additional AC adapters are available for purchase separately. You can charge the battery by connecting the unit to a computer by USB or using an AC adapter. When shipped new, the built in battery is not sufficiently charged, so it must be charged before using the unit. Charge the battery or connect the AC adapter before using the unit.

Charging the battery

There is several methods to charge the device.

Charging with a computer

Use the USB port on the right side panel, and use the included USB cable to connect the unit's USB port to a USB port on a computer.

Please connect this unit directly to a computer. Proper charging and operation cannot be assured when using a USB hub.

When connecting via USB, the device starts. To save energy and to fasten charging, turn it off by pressing the power switch on the top. Even if the power for the unit is off, the battery charges when connected to a computer by USB. The computer needs to be ON to charge the battery.

Complete charging by USB takes about 2 hours (when the unit's power is OFF).

Charging with an AC adapter

Use the USB port on the right side panel, plug in the included USB cable, connect the AC adapter to the USB cable and plug the adapter into an electrical socket to charge the unit. Complete charging with the adapter takes about 2 hours. You can use this unit as usual as it is charged by the connected AC adapter.

NOTE

The charging indicator to the top right of the display shows four green bars when fully loaded. During charging one green bar after the other is added.

Charging indicator:



Empty battery



Fully loaded battery

2-Preparations



Turning the power on and off

To turn the power ON, press the POWER key on the top panel. After booting “ENGL-MFX” appears on the display.

To turn the power OFF, press and the POWER key, the display turns black.

Resetting the unit

If the unit is operating abnormally, push the POWER key for a minimum of 5 seconds. This turns the power OFF and resets the ENGL-MFX’s system.

3-Part Names and Functions

3-Part Names and Functions

Top panel



POWER key

Press this key to turn the unit's power ON and OFF.

SD card slot

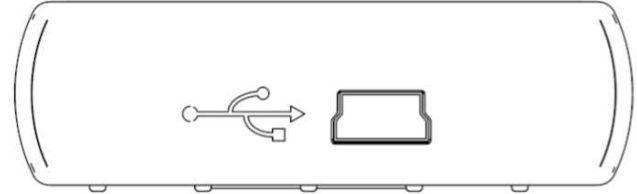
Insert an SD card into this slot. (See "About SD cards" on page 7.)

3-Part Names and Functions

Right side panel

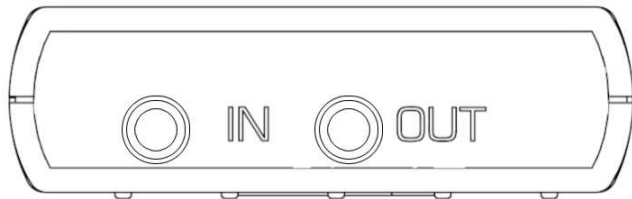
USB port

Use the included USB cable to connect with a computer USB port. (See “Connecting with a computer” on page 36.). Or connect an ENGL AC adapter to this jack.



3-Part Names and Functions

Left side panel



GUITAR IN jack

Use this jack to connect a guitar.

HEADPHONE OUT jack

Use this jack to connect with a headphone.

3-Part Names and Functions

Front panel



Display

The display consists of a capacitive touch screen. In addition to the home screen, the display shows all other screens, various setting screens, controls and other operation information by tapping icons or the surface and moving the fingers on the screen.

Wheel

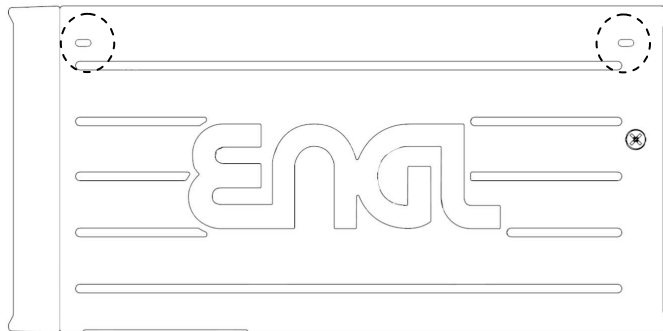
The touch wheel is also capacitive. When a screen is open, use the touch wheel to move up and down or left and right, or to change the setting of the selected item. To confirm a command, tap the inner circle of the wheel.



Use the wheel to change the value of selected items.

3-Part Names and Functions

Rear panel



Built-in stereo microphone

To use this stereo electret condenser microphone as the input source, select “INT/ MIC” on the input setting screen. If you connect an external microphone to the MIC IN jack on the left side, the built-in microphone becomes inactive.

Bottom panel

Plug in the adapter cable to be able to use two lines in and two lines out.



Dock-Connector

The dock connectors have different colours. Use the following dock connectors for the following functions:

BLUE	-> external -out	(L/R)
WHITE	-> external-in	(L/R)
RED	-> internal-out	(L/R)
BLACK	-> internal-in	(L/R)

4-Screen Overview

4-Screen Overview

Various screens appear on the display.

- The Home Screen is shown during ordinary playback and when playback is stopped.
- The Record Screen is shown when recording and in record standby.
- Appropriate setting screens are shown when making various settings.

This section explains the display and operation of the home screen and the recording screen, as well as the appearance and operation of the various setting screens.

Home Screen



Status Bar:

The status bar on the top of the screen is always visible and performs the following tasks:

Back Button



Tap the back button to return to the previous level. To return to the home screen, tap several times until you arrive at the main screen.

Level meter



This bar shows the the current average recording level of the audio streams. Tap on the bar to arrive at the setting screen of volume control



Elapsed time



The digits show the elapsed time - in minutes and seconds - of the currently playing track.

Power indicator

The battery icon on the top right screen shows the current level of remaining battery power. Four green bars show a fully charged battery.



Battery requires charging as soon as no green bar is visible anymore



or as soon as a screen with a big battery symbol is shown. A big battery symbol appears, should the mfx have not enough battery power when starting. Then you need to charge the battery as a start. See chapter 2 - Preparation – to learn how to charge the battery.

4-Screen Overview

Main Menu



Scroll up and down to view the full main menu. Tap to choose one of the menu items:

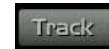
Info / Player / Trainer / Amps / Effects / Tuner / Replicator / Time
Pitch / Preset / Remote / System

Player Screen

Select *Player* to arrive at the player menu:



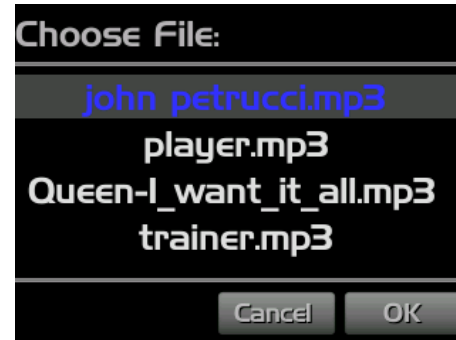
Tap on *Track* to get to the *Choose File* menu.





Choose the track you want to play.

The selected file turns blue.



Confirm with *OK*. To return to the player menu without choosing a file, press *Cancel*.

5-Making Connections

5-Making Connections

Connecting monitors

Connect headphones, speakers with built-in amplifiers, an amp and speaker system or other monitoring system to the ENGL-MFX /HEADPHONE OUT jack or to the dock connector cable.

Connecting with a computer

By connecting this unit with a computer, you can copy WAV, MP3, PCM or Ogg music files from the computer to this unit. From the computer you can also erase files on this unit and manipulate folders.

To connect to a computer, use the included USB cable to connect the USB ports of the ENGL-MFX and the computer.

When connected, “*USB – do you want to connect – yes or no*” appears on the ENGL-MFX screen. Choose *Yes* to connect to your computer.

The device appears on the computer screen as an external drive named “ENGL-MFX.”

Disconnecting from a computer

To end the USB connection, first follow the procedures for your computer to disconnect the ENGL-MFX and then remove the USB cable.

See the computer manual for how to close the connection on the computer.

NOTE

When shipped from the factory the “ENGL-MFX” drive contains the “MUSIC” and “INSTALL” folders, as well as the “MANUAL” folder, which contains a PDF copy of this owner’s manual

Connecting a guitar

An electric guitar can be connected directly to the GUITAR IN jack (standard mono phone jack) on the left panel.

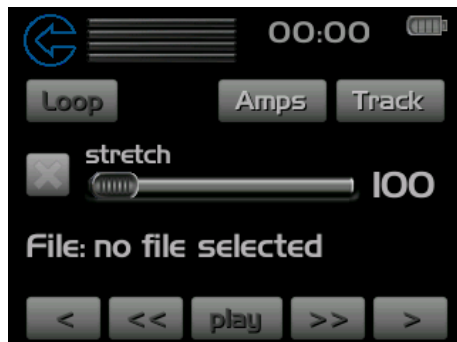
6-Playback

The following procedures assume that there are audio files stored on an SD card. To store files to the SD card see chapter 6 “Connecting with a computer” in this manual

When the home screen is displayed, tap PLAYER or use the touch wheel to scroll to PLAYER and tap the inner circle of the wheel.

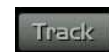
Player

Thus the player menu appears.



Selecting tracks

Tap the TRACK icon to select tracks both during playing and when playback is stopped.

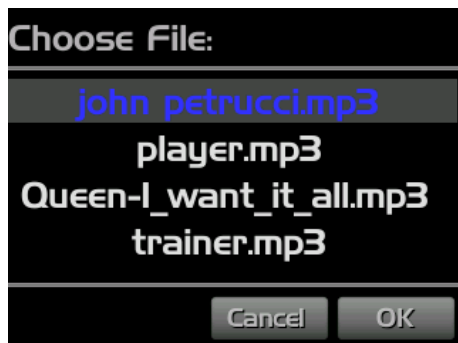


The choose file menu appears.



6-Playback

Scan all the tracks saved on the SD-card by using the wheel to scroll up and down. Choose the file you want to play by tapping the inner circle of the wheel or the track directly. The chosen file highlights in blue.


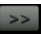




To confirm, tap OK. The screen returns to the player menu. However the play icon is highlighted in blue now, showing that a file was selected.



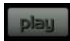
Starting and stopping playback

Press PLAY to start playback of the chosen track. Repress PLAY to stop playback respectively to pause.

During playback or when a track is stopped in the middle, press fast rewind  to return to the beginning of the current track. Press fast forward  to arrive at the end of the track.

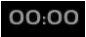
When stopped at the beginning of a track, press rewind  to skip to the beginning of the previous track, or press forward  to skip to the beginning of the next track.

Play a track



When playback is stopped, press  to start playback.

Stop playback

During playback, press  to stop (or pause) at the current position.

The digits  on the display show the elapsed time - in minutes and seconds - of the currently playing track.

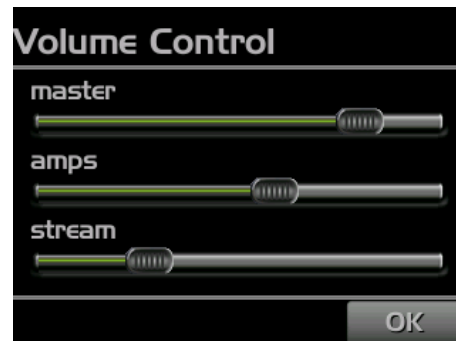
Search forward and backward


Hold fast rewind  to search backwards or fast forward  to search forwards.

Adjusting the volume

Tap the level meter  to adjust the volume.

The volume control menu appears.



Here you can adjust the volume of the amplifier, the played track and both mixed together. This happens by using the sliders. Tap  when you feel ok with the volume. The screen returns to the player menu.

Loop/repeat setting status

Tap the loop icon  to repeat a track

7-Specifications

7-Specifications

Audio Input and Output

GUITAR IN input

Jack	1/4., mono, unbalanced
Input impedance	1 Meg or more
Nominal input level	-26 dBV
Maximum input level	-10 dBV

LINE In input

Jack	3,5 mm phone (stereo)
Input impedance	23 k
Nominal input level	-10 dBV
Maximum input level	+6 dBV

LINE OUT output

Jack	3.5-mm phone (stereo)
Nominal line output	-14 dBV
Maximum line output	+2 dBV
Maximum headphones output	15 mW + 15 mW (with 32 Ω impedance headphones)

Audio performance

Frequency response (LINE IN > /LINE OUT)	20 Hz–20 kHz, +1/-3 dB
---	------------------------

Distortion (LINE IN > /LINE OUT)	0.03% or less
-------------------------------------	---------------

S/N ratio (LINE IN > /LINE OUT)	90 dB or more
Other specifications	

Audio file compatibility

MP3 files	32–320 kbps 44.1/48 kHz sampling frequency VBR (playback only) ID3 tag support up to Ver 2.4
-----------	---

WAV files	44.1/48 kHz sampling frequency 16/24-bit rate
-----------	--

Recording medium	SD card (64 MB–2 GB) or SD HC card (4–32 GB)
------------------	---

File system	FAT16/32
-------------	----------

Physical

Lithium ion battery	3.7 V, - 800 mAh
Battery life	About 5 hours when recording MP3 format with the built-in mic (varies with operating conditions)
Power consumption	1 W (during MP3 playback)
Dimensions	5,0 (W) x 1,6 (H) x 10,2 (L) (cm) 1.97 (W) x 0,63 (H) x 4 (L) (inches)
Weight	100 g

Computer requirements

Windows

Pentium 300 MHz or faster
128 MB or more memory
USB port (USB 2.0 recommended, 500 mA bus power required)

Macintosh

Power PC, iMac, G3, G4 266 MHz or faster
64 MB or more memory
USB port (USB 2.0 recommended, 500 mA bus
power required)

7-Specifications

Recomended USB host controller

Intel chipset

Supported OS

Windows 2000, XP and Vista
Mac OS X 10.2 or later

Accessories available for purchase

AC adapter (E1041)

8-FCC Compliance Statement


Changes or modifications not expressly approved by the party responsible for compliance could void the user's authority to operate the equipment.

NOTE: This equipment has been tested and found to comply with the limits for a Class B digital device, pursuant to Part 15 of the FCC Rules. These limits are designed to provide reasonable protection against harmful interference in a residential installation. This equipment generates, uses and can radiate radio frequency energy and, if not installed and used in accordance with the instructions, may cause harmful interference to radio communications. However, there is no guarantee that interference will not occur in a particular installation. If this equipment does cause harmful interference to radio or television reception, which can be determined by turning the equipment off and on, the user is encouraged to try to correct the interference by one or more of the following measures:

- Reorient or relocate the receiving antenna
- Increase the separation between the equipment and receiver
- Connect the equipment into an outlet on a circuit different from that to which the receiver is connected
- Consult the dealer or an experienced radio/TV technician for help.

This device complies with Part 15 of the FCC Rules. Operation is subject to the following two conditions:

- (1) this device may not cause harmful interference, and
- (2) this device must accept any interference received, including interference that may cause undesired operation.



ENGL-MFX

ENGL Gerätebau GmbH

<http://www.engl-amps.com>