

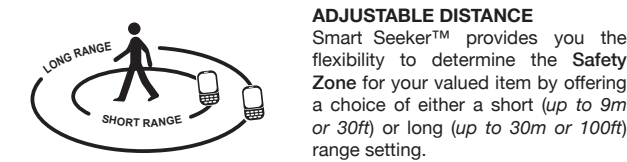
Smart Seeker™

User's Guide

SECURE SMART TECHNOLOGY

This portable security system is great for traveling or just around and about.

Revolutionary patent-pending technology creates a secure “Safety Zone” around you making sure your tagged valued item is not forgotten or stolen. Your **MONITOR** alarms to let you know if your tagged item goes outside of your preset **Safety Zone**.

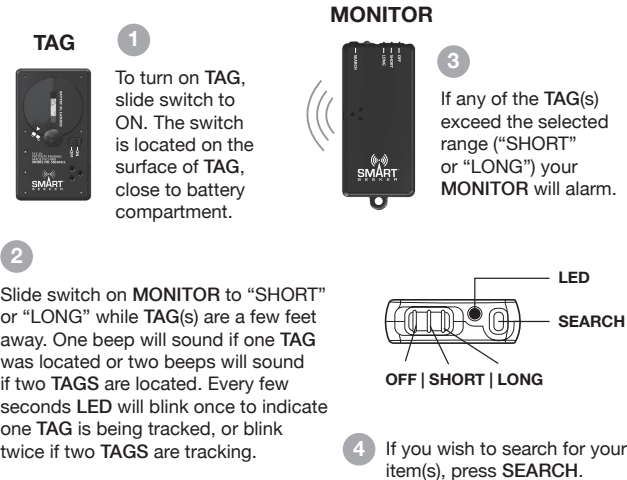


SEARCH FEATURE
You can search for your **TAGS** with the press of **SEARCH** button on the **MONITOR**. **TAG's** loud audio alert goes on and beep when **MONITOR** is located within the range of 100 ft.

LONG BATTERY LIFE
MONITOR runs over 1 year (2 x CR2032) and **TAG** runs over 6 months (1 x CR2032) on a single set of batteries. Batteries are included.

Smart Seeker™ User's Guide

OPERATING INSTRUCTIONS



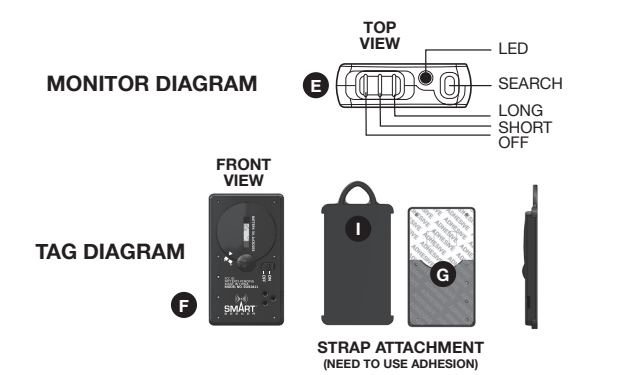
TESTING SYSTEM

(See MONITOR and TAG diagrams)

ONE TAG OPERATION
Turn **MONITOR** to “**SHORT**” **E** setting while **TAG F** is about 30cm (1ft). After 10 seconds a single beep will sound and **LED** will start blinking. Holding **MONITOR**, begin walking away from **TAG F**. Note alarm goes off for your

“**SHORT**” setting. Turn **MONITOR** to “**LONG**” **E** setting and continue walking away. Note distance alarm goes off for your “**LONG**” setting.

TWO TAGS OR MORE OPERATION
Turn **MONITOR** to “**SHORT**” **E** setting while **TAGS F** are about 30cm (1ft) away. Within 10 seconds, two short beeps will sound and **LED** will start blinking twice every few seconds to indicate both **TAGS** are begin tracked. (If only a single beep sounds, only one tag was located. If you want two or more **TAGS** to be tracked, turn **MONITOR** off. Make sure all **TAGS** are close to **MONITOR**. Turn **MONITOR** on again. Holding **MONITOR E**, being walking away from **TAGS F**. Note distance alarm goes off for your “**SHORT**” **E** setting. Turn **MONITOR** to “**LONG**” **E** setting and continue walking away. Note alarm goes off for your “**LONG**” setting.



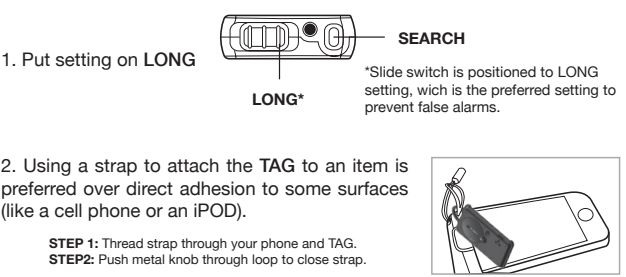
ATTACHMENT OPTIONS
Strap Option: Peel off **TAG** adhesive seal **G** and snap Strap attachment
Direct Adhesive Option: Peel off **TAG** adhesive seal **G** and stick to desired surface. **CAUTION: Adhesive is VERY STRONG. Make sure of location before sticking on TAG.**

REDUCING FALSE ALARMS

Your Smart Seeker™ uses advanced Radio Frequency ‘RF’ technology that offers exceptional advantages by not requiring the **MONITOR** and **TAG** to have direct line of site to work.

However, operation may be affected by the manner in which the **MONITOR** and **TAG** are worn on the body or attached to an item. Under certain conditions the **ALERT** range may become shorter resulting in false alarms.

To Reduce False Alarms Try One or More of the Following Four (4) Suggestions:



3. Adjust location of **MONITOR** or **TAG** to be closer to each other. The body can greatly shorten the alert range so try to position the **MONITOR** and **TAG** on the same side of the body.

4. If false alarms persist, turn **MONITOR** off for 15 seconds and then turn back on.

GENERAL TIPS

1. The **MONITOR** performs best when worn or attached to a purse strap or clipped to a belt loop. Try to avoid attaching many keys to it and then putting it in the pocket of your pants.
2. To minimize false alarms, keep **TAG** as close as possible to the **MONITOR** at all times.
3. Metal objects, such as coins, may cause false alarms if they touch or are located very close to the **MONITOR** or **TAG**
4. Test the **MONITOR** and **TAG** in the manner they will be worn (example: **MONITOR** clipped to purse strap or pants belt and **TAG** on cell phone in pocket or belt holster).

TROUBLESHOOTING GUIDE		
PROBLEM	CAUSE	SOLUTION
MONITOR does not make a sound even when TAGS are out of range and LED never blinks	1. MONITOR needs to be reset. 2. MONITOR batteries are dead.	1. Reset MONITOR by removing and installing batteries again. 2. Replace MONITOR batteries.
MONITOR alarm always beeps when MONITOR is on	1. Both TAGS need to be reset. 2.Both TAG batteries are dead	1. Reset both TAGS by removing each battery, wait 10 minutes and install again. 2. Replace each TAG battery
MONITOR beeps once every 10 minutes	MONITOR batteries are getting low	Replace MONITOR and TAG batteries
MONITOR alarms when TAG is in close range (false alarm)	Method MONITOR and TAG are worn or used is not optimal	Review suggestions on other side “How to Wear Your SmartSeeker to Reduce False Alarms
Not sure SmartSeeker system is working	Need verification SmartSeeker system is operating properly	Follow section “Testing System” to test unit
MONITOR does not track both TAGS	1. One TAG has poor battery contact. 2. One of the TAGS has a dead battery.	1.Reset bad TAG by removing battery, wait 10 minutes and install again. 2.Replace bad TAG battery
MONITOR never makes a sound and LED is blinking	Speaker may be damaged	Contact our Customer Support for help

WARRANTY

Secure Smart Technologies (SST), warrants to the original purchaser that this product (Smart Seeker™), is free from material and workmanship defects when used under normal conditions for a period of one (1) year from the date of purchase. Should the product contain defects in material or workmanship Secure Smart Technologies (SST), Inc., will repair or replace the product, at our option, free of charge. Purchaser will be responsible for all costs associated with packaging and shipping the product to Secure Smart Technologies (SST) at the address noted on front page and all other freight or insurance costs associated with the return. Secure Smart Technologies (SST), will bear the cost of shipping the repaired or replaced product to the purchaser. Product should be returned in its original package accompanied by a proof of purchase, either a sales receipt or other proof that the product is within the warranty period. This warranty is void if the owner repairs or modifies the product or the product has been damaged as a result of misuse. This warranty excludes any liability other than that expressly stated previously, including but not limited to, any incidental or consequential damages.
SOME STATES DO NOT ALLOW THE EXCLUSION OR LIMITATION OF INCIDENTAL OR CONSEQUENTIAL DAMAGES, SO THE ABOVE LIMITATION OR EXCLUSION MAY NOT APPLY TO YOU. THIS WARRANTY GIVES YOU SPECIFIC LEGAL RIGHTS, AND YOU MAY ALSO HAVE OTHER RIGHTS THAT MAY VARY FROM STATE TO STATE.
Go to the Secure Smart Technologies (SST) website to register your Smart Seeker™ warranty.
www.securesmarttech.com

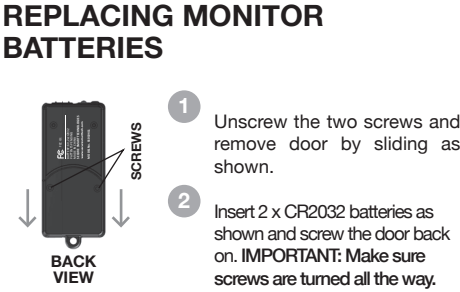
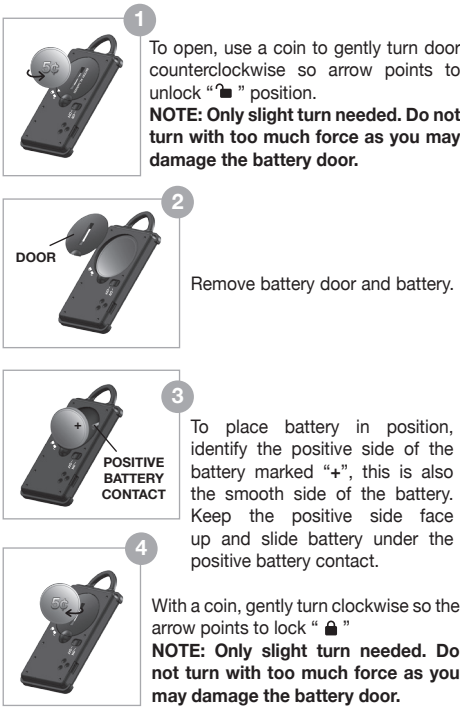
⚠ WARNING

PLEASE READ THE FOLLOWING WARNINGS AND ALL ASSEMBLY AND USE INSTRUCTIONS CAREFULLY BEFORE USING SMART SEEKER™ KEEP THESE INSTRUCTIONS FOR FUTURE REFERENCE.

- The Smart Seeker™ system is not intended to replace responsible and proper supervision.
- Do not use Smart Seeker™ on board an airplane. You can turn off the TAG by removing the battery.
- Smart Seeker™ contains small parts not suitable for children.
- It is essential to check reception regularly. Please see the “Testing System” section for complete instructions.
- Check batteries regularly by observing the LED blinking. An audio tone will occur when batteries are low.
- RF distance measurements are not accurate and can vary from one locale to the next.
- This product should be serviced only by qualified service personnel at Secure Smart Technologies (SST), Inc. when:
 - The **MONITOR** or **TAG** have fallen
 - Liquid has spilled into the **MONITOR** or **TAG** or either unit has fallen into water.
 - The **MONITOR** or **TAG** does not appear to operate normally or exhibit a marked change in performance.
- **DO NOT** attempt to service this product beyond that described in the Troubleshooting section. All other servicing should be referred to qualified personnel at Secure Smart Technologies (SST).

Changing Batteries

REPLACING TAG BATTERY



⚠ CAUTION

Check batteries regularly by observing the LED is still blinking. Replace batteries when needed to ensure proper operation. DO NOT use Smart Seeker™ system when batteries are low. DO NOT mix old and new batteries, it is best to replace both TAG and MONITOR batteries at the same time. DO NOT mix alkaline, standard (carbon zinc). DO NOT use rechargeable (nickel-cadmium) batteries.

RETURNS

Do not return this product to the place of purchase. If any parts are missing, or if you are having difficulty using this product visit our website at www.securesmarttech.com.

FCC warning statement

This equipment has been tested and found to comply with the limits for a Class B digital device, pursuant to part 15 of the FCC Rules. These limits are designed to provide reasonable protection against harmful interference in a residential installation. This equipment generates, uses and can radiate radio frequency energy and, if not installed and used in accordance with the instructions, may cause harmful interference to radio communications. However, there is no guarantee that interference will not occur in a particular installation. If this equipment does cause harmful interference to radio or television reception, which can be determined by turning the equipment off and on, the user is encouraged to try to correct the interference by one or more of the following measures:

- Reorient or relocate the receiving antenna.
- Increase the separation between the equipment and receiver.
- Connect the equipment into an outlet on a circuit different from that to which the receiver is connected.
- Consult the dealer or an experienced radio/TV technician for help.

Caution: Any changes or modifications to this device not explicitly approved by manufacturer could void your authority to operate this equipment.

This device complies with part 15 of the FCC Rules. Operation is subject to the following two conditions: (1) This device may not cause harmful interference, and (2) this device must accept any interference received, including interference that may cause undesired operation.