

使用手册

USER MANUAL

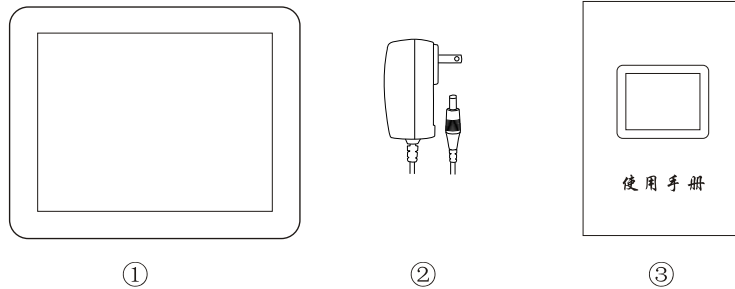


MID

产品名称：移动平板电脑
机型编号：SL08DW01
输入电流：DC=5V, 2A
中国苏州双林塑胶电子有限公司
江苏省苏州市吴中区石湖西路166-168号



包装盒内物品

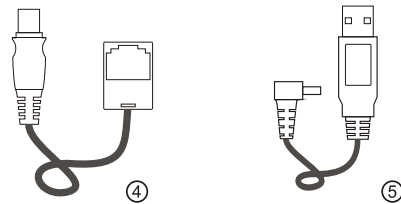


包装应含下列物品

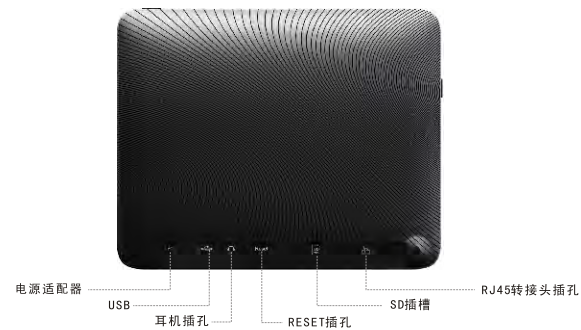
1. 主机
2. 电源适配器
3. 使用手册

自选配件

4. MinUSB ➡ Rj45转接头
5. MinUSB ➡ USB转接头

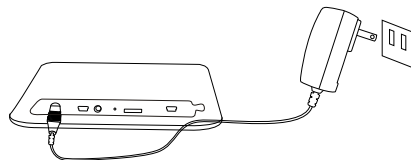


背面接口



- **电源适配器:** 将电源适配器插入电源插座, 同时将另一端插入主机进行充电。

(注意: 包装盒内主机并未完全充满电, 请您务必于第一次使用前为主机进行充电至完全饱和状态。)



使用基本入门



- **电源按钮:** 若要开/关主机, 请长按电源键;
- **返回按键:** 在任何时候短按返回键可回到上个界面;
- **休眠/唤醒:** 若要让主机进入休眠模式, 请短按一次电源按键, 再按一次电源按键可为主机解锁。

主画面

主机主画面提供多种应用程序, 按相应的程序快捷图标可启动主机相应的程序, 还可由右往左选择更多的新增应用程序。



状态栏

- 主画面上方状态栏图示。右边显示主机的网络状态、电量、时间、音量调节、菜单、返回; 左边显示主页, 您可通过轻触其图标进行设定。

- 当您轻触菜单图标“≡”时, 主画面下方会显示快速启动工具栏提供您最常用的应用程序-数码相框、音乐、电子书等。

操作技巧

您可以用手指或触控笔长按图示栏位以启用其它功能, 例如在浏览器上长按网址栏弹出键盘输入网址。

您可以用手指或触控笔轻触屏幕上/下/左/右拉动以移动或阅读更多内容。

电源显示

电量图示



安装SD卡

翻至主机背面，将SD卡的金属面朝下，插入插槽当中。

卸除SD卡，轻触屏幕进入设定>SD卡和系统内存，轻触卸载SD卡，在主机出现相应提示后，翻转主机至背面，轻按SD卡使SD卡跳出插槽即可。



网络连线设定

启动网络连接

轻触进入设定>无线和网络，再轻触启动Wi-Fi，此时主机将会开启并搜索附近可使用的无线网络信号。

检查网络连接状态

主界面右上方状态栏Wi-Fi图示，以信号栏数量多少显示Wi-Fi信号强度；Wi-Fi界面显示目前范围内可用无线网络可供连接。



网络浏览器



轻触开启网络浏览器应用程序，再短按功能键，同时轻触选择往前/往后功能，选择键盘输入网址轻触go按钮连接该网站。

电子书

轻触启动电子书应用程序，您将看到您上次停止阅读的电子书位置，您可轻触屏幕上/下/左/右拉动以阅读更多内容。



音乐播放



轻触开启音乐应用程序，您可以通过艺术家/专辑/乐曲/播放清单/专辑浏览来选择播放的音乐，还可以在音乐播放后，通过主界面按键回到主界面同步操作其它的应用程序。

图片浏览及视频播放

轻触开启图库应用程序，点击主菜单中的“图库”，进入“图库”主界面，这里会列出所有的图片文件和视频文件。如下图所示：



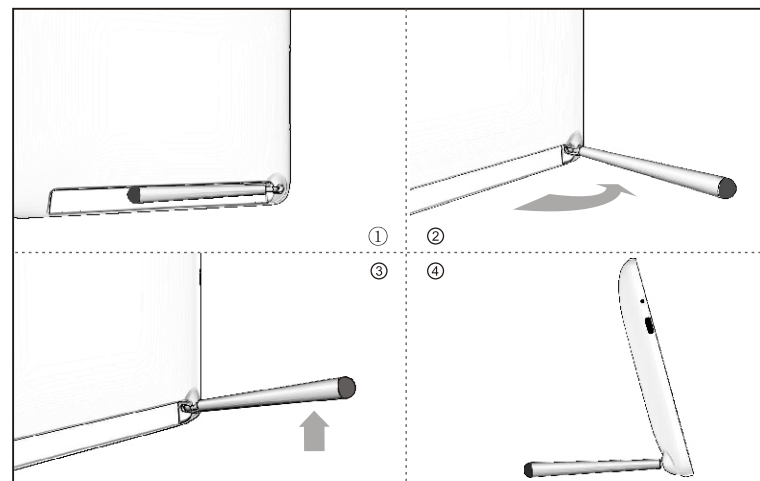
(图片浏览)



(视频播放)

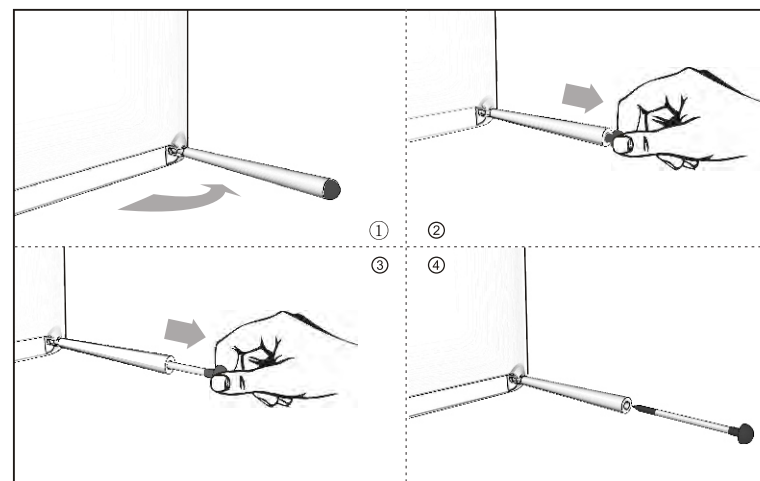
支撑架

具体操作步骤请参照以下图片指示：



触控笔

具体操作步骤请参照以下图片指示：



安全公告：

- * 不可自行拆卸或修理
- * 请防止水和灰尘进入，避免太阳长时间直射
- * 请用软布清洁，勿使用化学溶剂擦拭
- * 请勿使用其它电源适配器、电池或附件
- * 请勿用坚硬或表面粗糙的物体触碰
- * 请避免跌倒或撞击
- * 请切断电源，如产品长时间不使用或无人照看

电池安全公告

关于电池：

- * 为减少火灾或烧伤的危险，请勿自行拆卸、挤压、穿刺或丢弃在火、水中。

重要指示（针对服务人员）：

- * 维修替换时只能用制造商建议的相同或同等类型的电池，否则有爆炸的危险。
- * 电池必须回收或妥善处理。

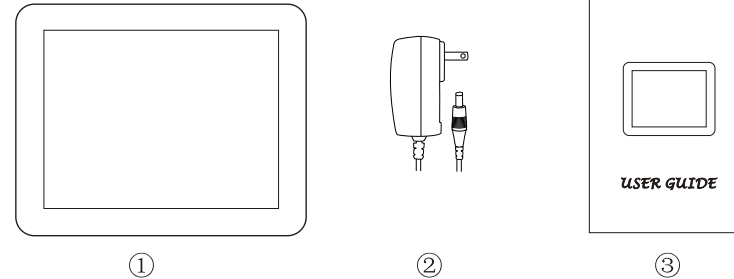
* 本公司产品因版本升级、规格变化，文档中使用的图片或文字与实际产品可能不一致，以客户实际产品为准，恕不另行通知。请您将重要资料进行备份，因资料丢失，损坏等造成的损失，本公司概不负责。

如果您的机器发生故障或需要技术支持，请拨打我们的服务热线：

4008868780，也可以登陆我们的产品官方网站

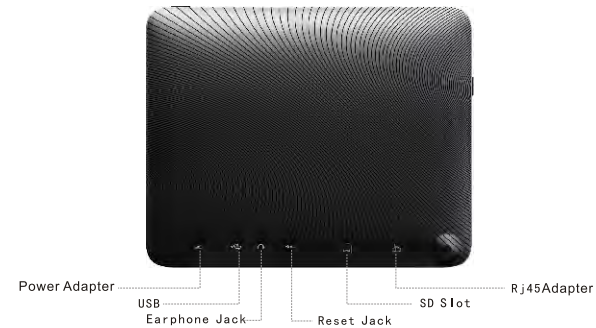
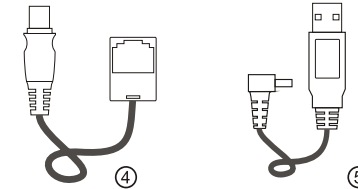
[Http://www.mipad.com.cn](http://www.mipad.com.cn) 我们会第一时间为您提供帮助。

Box Contents



Packaging should contain the following items:

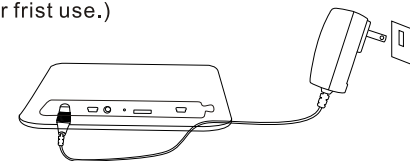
- 1.Host
 - 2.Power Adapter
 - 3.User Guide
- Optional accessories
- 4.MinUSB⇌Rj45 Adapter
 - 5.MinUSB⇌USB Adapter



The Back Of The Interface

Power adapter: using the power adapter to connect the host to a power outlet, charging the battery.

(Note: the host in box is not fully charged, please be sure to charge the battery fully before your frist use.)



Getting Started With The Basic



Power button: To on / off the host, please press the power button awhile ;
Back key: at any time, press the back key to return to the previous interface;
Sleep / wake-up: To put the system into sleep mode, briefly press the power button, press the power button again for the host to unlock.

Main Screen

The host main screen offers a variety of applications, press the corresponding shortcut icon to start the corresponding host program program, you can also choose more new applications from right to left.



Status Bar

The main screen above the status bar icon. On the right shows the host network status, power, time, volume control, menu, back; on the left shows home page, you can tap the icon to set it.

When you tap the menu icon "≡", the main screen is displayed below the Quick Launch toolbar provides access to your most used applications - digital photo frame, music, books and so on.

Operating Skills

You can use your finger or stylus press the icon field to enable other functions, such as browser pop-up keyboard, press and enter the URL address bar.

You can use your finger or stylus touch screen, up / down / left / right drag to move or read more.

Power Display

Battery Icon



Install SD Card

Turn the host to the back of the metal facing the SD card, insert slot them.

Removable SD card, touch screen, enter the settings> SD card and system memory, SD card, touch unloaded, after prompted the host, host to the back flip, tap out SD card SD card slot so that you can.



Network Connection Setting

Start a network connection

Touch access to settings> wireless and network, and then touch Start Wi-Fi, then the host will be used to open and search for nearby wireless network signal.

Check the network connection status

The top right of the main interface, Wi-Fi icon in the status bar to the signal bar displays the number of how many Wi-Fi signal strength; Wi-Fi interface shows the current range of available wireless networks for connectivity.



Internet Browser



Touch open the web browser application, then press function key, touch the select forward / backward function, select the go button touch keyboard connected to the Web site.

E-Book

Touch Start e-book application, you will see your e-book to stop reading the last location, you can touch the screen up / down / left / right drag to read more.



Music Play



Touch open the music application, you can by artist / album / track / playlist / album browsing to select the music, you can also select the music played, the main interface through the synchronization button to return to the main interface of other applications.

Picture Browsing And Video Playback

Touch open the gallery application, click on the main menu in the "gallery" and enter "Gallery," the main interface, there will list all the image files and video files. As shown below:



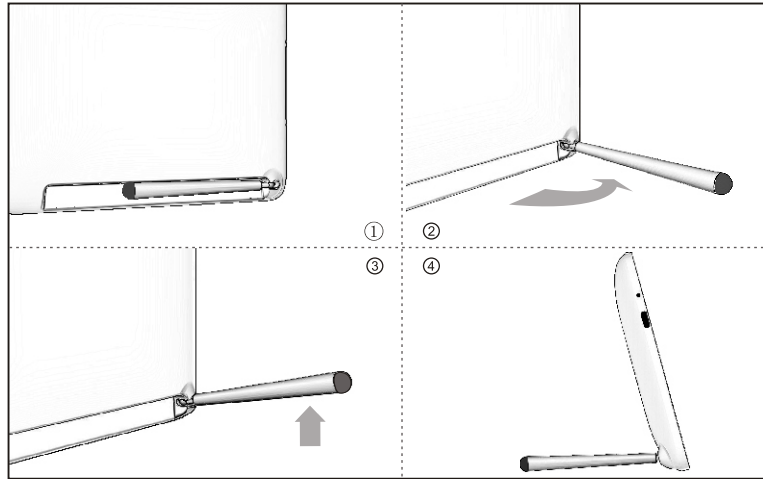
(Picture here)



(Video)

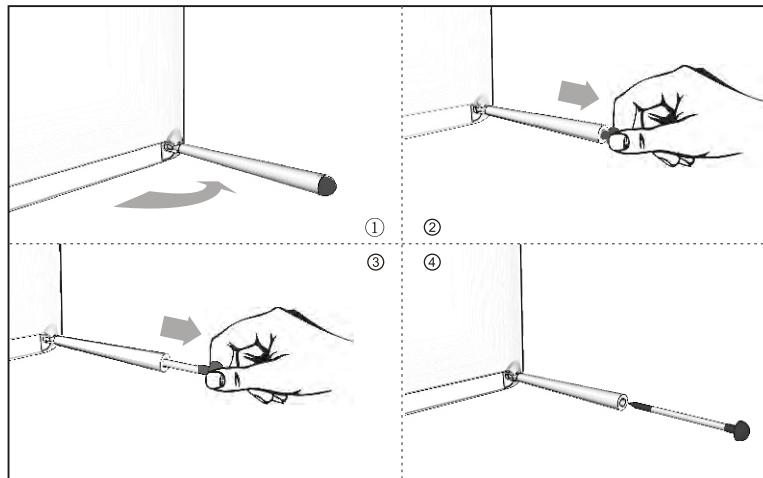
Support Frame

Specific steps, please refer to the following picture instructions:



Stylus

Specific steps, please refer to the following picture instructions:



Security Bulletins:

- * Do not disassemble or repair by yourself
- * Please prevent drop it to water, avoid sun point-blank and much dust on screen.
- * Keep it clearing with soft cloth clean, do not use other chemical liquid.
- * Don't use other adapter, battery or accessories, may cause damage
- * Please don't use a sharp objects destruction
- * Don't fall or bump, avoid electric shock and fire
- * Please shut off the power when you do not using.

About The Battery:

- * Use a specified battery in the equipment .
- * Caution: this unit contains a non-replaceable internal Lithium Ion battery . The battery can burst or explode , releasing hazardous chemicals . To reduce the risk of fire or burns, do not disassemble . crush , puncture, or dispose of in fire or water.

Important instructions (for service personnel only)

- * Caution : risk of explosion if battery is replaced by an incorrect type. Dispose of used batteries according to the instructions .
- * Replace only with the same or equivalent type recommended by the manufacturer.
- * The battery must be recycled or disposed of properly .
- * Use the battery only in the specified equipment.

FCC Compliance Statement:

The device complies with Part 15 of FCC rules. Operation is subject to the following two conditions:(1) This device may not cause harmful interference. (2) This device must accept any interference received, including interference that may cause undesired operation.

This equipment has been tested and found to comply with limits for Class B digital device, pursuant to part 15 of the FCC Rules. These limits are designed to provide reasonable protection against harmful interference in a residential installation. This equipment generates, uses and can radiate radio frequency energy and, if not installed and used in accordance with the instructions, may cause harmful interference to radio or television reception, which can be determined by turning the equipment off and on. The user is encouraged to try to correct the interference by one or more of the following measures:

- Reorient or relocate the receiving antenna on the affected receiver.
- Increase the separation between this device and the receiver. Connect this device into an outlet on a circuit different from that to which the receiver is connected.
- Consult the dealer or an experienced technician for help.

MODIFICATION: Any changes or modifications not expressly approved by the grantee of this device could void the user's authority to operate the device.

RF Exposure warning:

This device and its antenna(s) must not be collocated or operating in conjunction with any other antenna or transmitter.

- * This product updates and specification change prompt. Do not worry when you find it not match with the pictures or text with reality.

If your machine fails or need technical support, please call our service hot line: 4008868780,

Also can log on to our product's official website

Http://www.mipad.com.cn

we will be the first time to help you