

NEO MOUSE

Operating manual

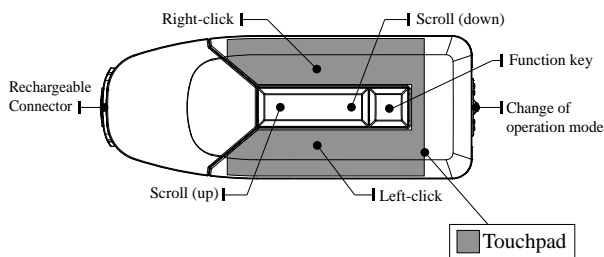


Contents

1. Preliminary Remarks	1
2. Warning Notices	2
3. Product Properties	3
4. Components and Descriptions	4
5. Recharge Methods	5
6. Types of Uses of the Mouse	6
7. Selection of Functions by Moving the Mouse	18
8. Selecting Functions during Presentations	24
9. FAQ	26
10. Warranty Conditions	27
11. Product Data	28
12. Letter of Guarantee	29

1. PRELIMINARY REMARKS

※ Overall view



1. This device is perfectly suited to presentations
2. Before using the device, the battery needs to be fully charged for some 1-2 hours.
3. When using air mode, the cursor is moved *by touching the touchpad with your thumb*

1

2. WARNING NOTICES

Warning: Should the following warning notices not be heeded, there is a danger of damaging or destroying the product and injuring the user

- Do not open, dismantle or drop the device onto the ground. Do not step on the device, bend it or drill a hole into its casing. Do not damage the device or expose it to electrical radiation. Do not bring the device into contact with open flames, paint or aggressive substances.
- Do not use the device in rain, near to sinks or other sources of moisture and do not hold it with wet hands. Do not let small pieces of food leftovers or drinks get into the device.
- Do not repair or reconfigure the device independently.
- Only charge the device using the USB cable and USB dongle supplied. Damages incurred through the use of additional devices are excluded from the guarantee.
- If the device is used for an extended period or the same hand and arm movements are made repeatedly, tension pain in the hand, arm, shoulder and neck as well as in other body parts may be felt. Please take breaks. In the case of lasting pain after using the device, please consult a doctor.
- Do not use the device in places where there is a risk of explosion or fire.
- With wireless use of the device, electronic interference may occur if there are other wireless devices operating in the vicinity.
- Store the device in a place out of reach of children. Do not put the device in your mouth.
- Exercise caution in regard to unauthorised access during security-related actions.
- An integrated correction function filters out unintended mouse movements which may occur as a result of the natural, involuntary restiveness of the hand. Exercise caution with precision work, computer games and important actions.
- Do not force any connections to external devices at the interfaces.
- Inspect the interfaces for contamination.
- When using hearing aids, pacemakers and other medical devices, disruptions may come about due to interferences from the product. Find out from the manufacturer of such devices or from your doctor if this is safe.
- The operating range in wireless air mode may fluctuate depending on the specific local conditions.
- Caution! Interference may come about when using the device on airplanes, underground trains and in cars.
- Some functions of the device may not work properly with particular operating systems or particular hardware. The functionality of the device may be impaired by extreme humidity or extreme temperatures.
- Keep the device free of dust, aggressive substances and detergents.
- Do not clean the device with substances like petrol, nitro-cellulose combination thinner or alcohol.
- Store the device in the case supplied when not in use in order to protect it from being shaken or physically damaged.

2

3. PRODUCT PROPERTIES



Presentation device suited to specialists

- By controlling the mouse pointer using hand movements and through the support of the pen function, giving presentations is much easier



New 3D dimension when controlling the mouse

- Not only can the mouse be controlled on 2D surfaces, but also in the three dimensions of the room itself



1600 CPI super sensitivity laser

- In comparison with conventional mouse devices, the integration of laser sensors ensures double the super-sensitivity of the mouse movement



A world's first - mouse control by moving your finger

- Operating the computer accomplished by simple finger movements



The latest touchpad model

- The most modern touch-system available has been integrated into the device to make moving the mouse pointer as easy as possible



2.4GHz advanced wireless transmission

- Precise control is possible over a maximum distance of 10 meters



The latest semiconductor technology

- The most modern semiconductor technology around was used



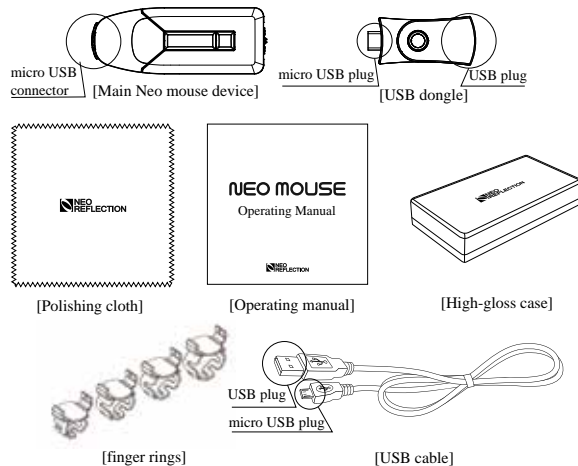
National Patent received

- Both the innovativeness and technology of the device are officially certified

3

4. COMPONENTS AND DESCRIPTIONS

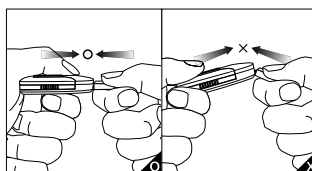
Please check that all device components are fully functioning. If defects are found during inspection, please consult your retailer



4

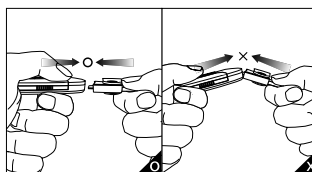
5. RECHARGE METHODS

Since this device has a lithium polymer battery (as mainly used in mobile phones), it can be recharged again and again. Before using the device, the battery needs to be fully charged for some 1-2 hours.



[Using the USB cable]

1. Connect the USB plug of the USB cable to your PC. Open the rubber seal on the main device which protects the micro USB connection. Then connect the micro USB plug of the USB cable to the micro USB connection of the device
 2. As soon as the connection is established, a bright-green LED will illuminate on the device
 3. When the charging process has **completed**, the **LED will go out**
 4. Now the connection can be terminated
- ※ Please exercise caution when establishing the connection between the main mouse device and the micro USB plug. Forceful use can damage the device.



[Using the USB dongle]

1. Connect the micro USB plug of the USB dongle to your device. Then connect the USB plug to your PC
 2. As soon as the connection is established, a bright-green LED will illuminate on the device
 3. When the charging process has **completed**, the **LED will go out**
 4. Now the connection can be terminated
- ※ Please exercise caution when establishing the connection between the main mouse device and the PC. Forceful use can damage the device.

※ Please only use the USB cable and USB dongle supplied to charge the Neo mouse (other uses are not permitted)

5

6. TYPES OF USES OF THE MOUSE

I. Initial operation of the laser mouse

II. Initial operation of the air mouse

III. Usage tips for the air mouse

- i. Easy handling during operation
- ii. Radius of the hand movement
- iii. More exact clicking
- iv. Touch function

IV. Changing the hand position when using the air mouse

V. Shifting the movement mode with the air mouse

- i. General mode
- ii. Reverse mode
- iii. Free mode
- iv. Test mode

VI. Additional types of use

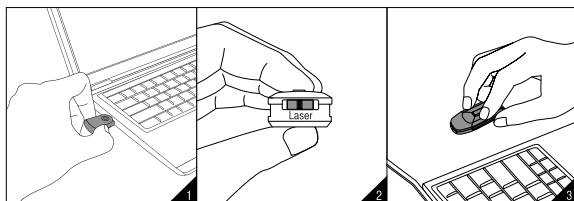
- i. Using the scroller
- ii. Idle mode
- iii. Fault message with low battery
- iv. Disruption to wireless transfer

6

I. Initial operation of the laser mouse

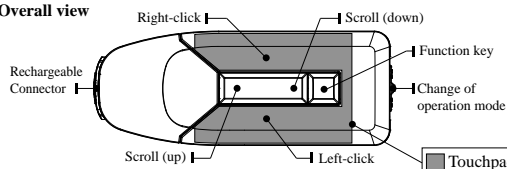
This laser mouse can also be used on flat surfaces.

As a super-small and super-light mouse, it can also be used in very tight spaces.



1. Connect the USB dongle to your PC.
 2. On the main device, set the mode to "laser".
 3. Use the mouse on a flat surface or on your mouse pad
- ※ The function key will not be operable when the laser mouse is in use

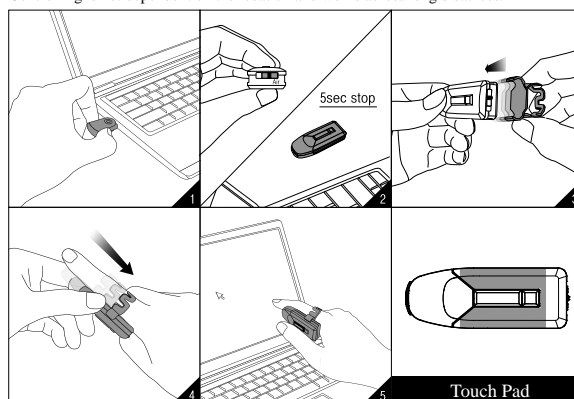
※ Overall view



7

II. Initial operation of the air mouse

With the air mouse, the computer can be controlled by finger movements. Controlling is not dependent on the location and works across long distances.



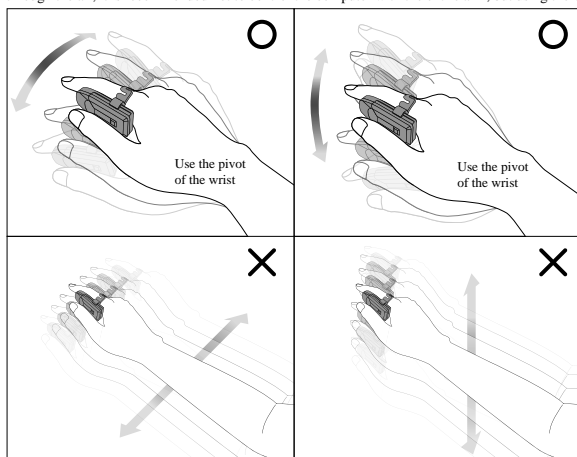
1. Connect the USB dongle to your PC.
2. On the main device, set the mode to "air". Place the mouse onto the floor for around five seconds (place it on the **floor** for another five seconds should the spatial axis of the room change during later usage)
3. Attach the finger ring which fits your finger size to the corresponding holders on the mouse
4. Attach the mouse to your index finger using the finger ring
5. When controlling the computer through the room, touch the touchpad using your thumb

8

III. Usage tips for the air mouse

i. Easy handling during operation

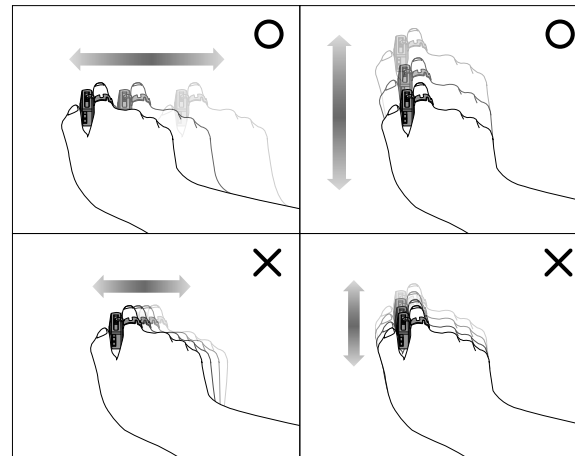
Not only can the mouse be used on a flat surface, but also freely throughout the room. When operating through the air, it is recommended not to control the computer with the entire arm, but using the wrist.



9

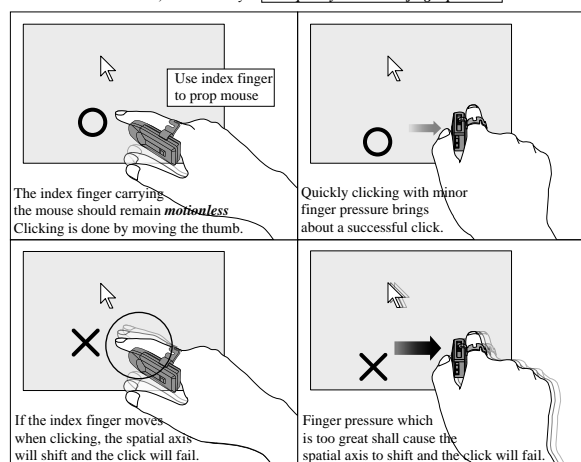
ii. Radius of the hand movement

A function built into the device automatically evens out involuntary hand movements. For this reason, very small movements of the hand do not cause the mouse pointer to move. As a result, somewhat larger hand movements are needed to move the cursor.

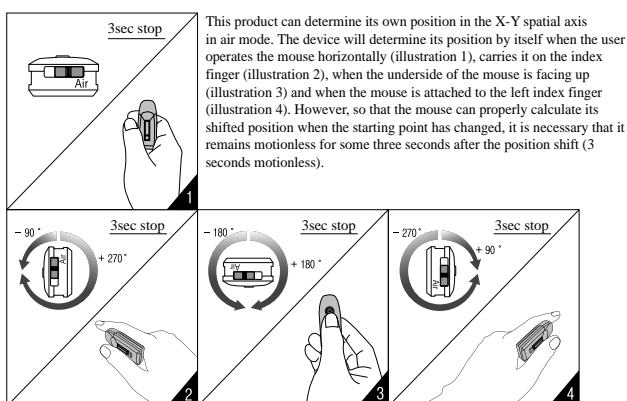


10

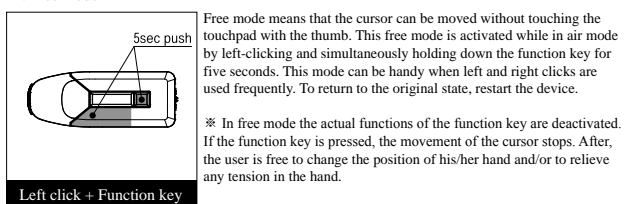
In standard mouse devices, clicking and double-clicking the mouse are done when the mouse is not moving. With the air mouse, the spatial axis may change as the finger carrying the mouse moves a little when clicking. In order to avoid this shift, it is necessary to click quickly with minor finger pressure.



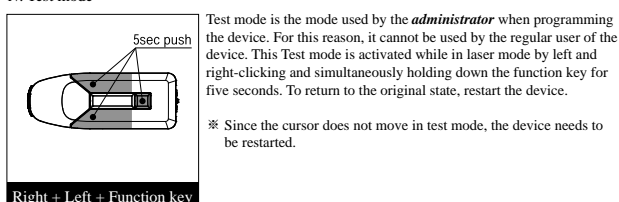
IV. Changing the hand position when using the air mouse



iii. Free mode

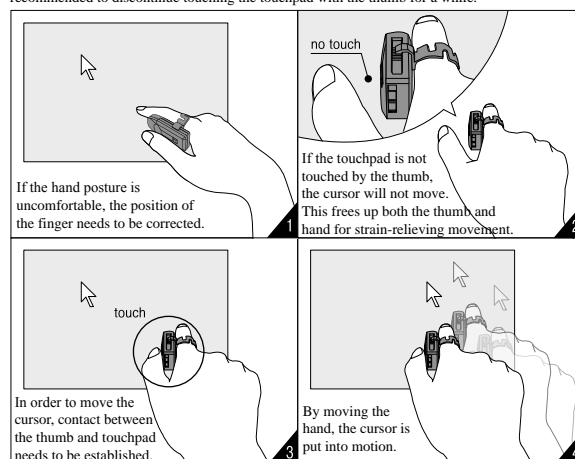


iv. Test mode



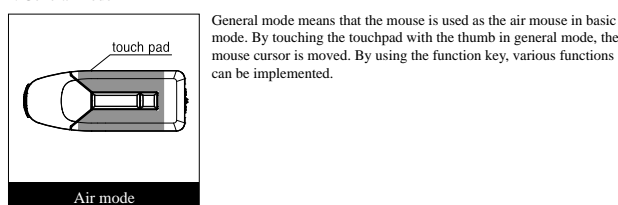
iv. Touch function

With this device, the cursor is moved by touching the touchpad with the thumb. Depending on the position of the cursor, the fingers and the wrist may become tired or tense. In this case, it is recommended to discontinue touching the touchpad with the thumb for a while.

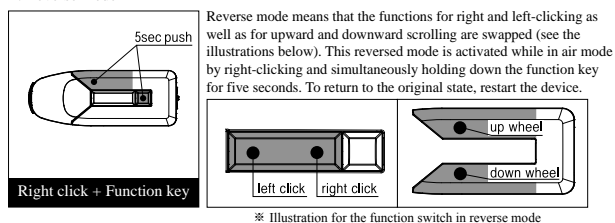


V. Shifting the movement mode with the air mouse

i. General mode

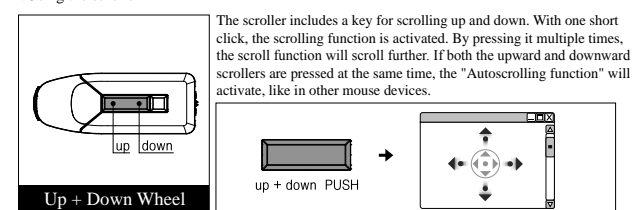


ii. Reverse mode

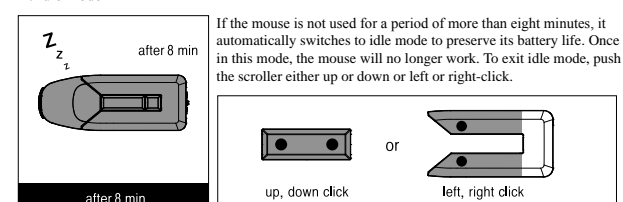


VI. Additional types of use

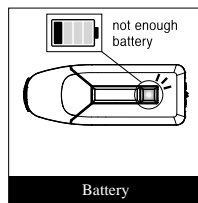
i.Using the scroller



ii. Idle mode

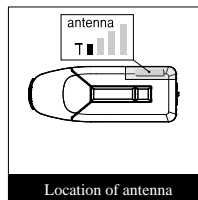


iii. Fault message with low battery



When the battery is low in air mode, the cursor stops or moves to the corner of the screen without moving any further or it moves slowly to the side without any finger movement. Moreover, the red LED display will be toggled for a certain amount of time. Since the battery is virtually empty in this state, air mode will not work and after a certain amount of time laser mode will not work anymore either.

iv. Disruption to wireless transfer



Wireless transfer will be disrupted in the following cases:
when the antenna built into the main device is covered by the finger;
when the USB plug is plugged in at the back of the PC;
when an obstacle (people, metal objects, etc.) is in the way of the USB plug and the mouse.

17

7. SELECTION OF FUNCTIONS BY MOVING THE MOUSE

I. Functions which can be activated using the function key

II. Functions in Windows

- Going to the previous page in Internet Explorer with the function key
- Going to the next page in Internet Explorer with the function key
- Opening a new window in Internet Explorer with the function key
- Showing the desktop with the function key
- Ending the programme with the function key
- Selecting all with the function key
- Printing with the function key

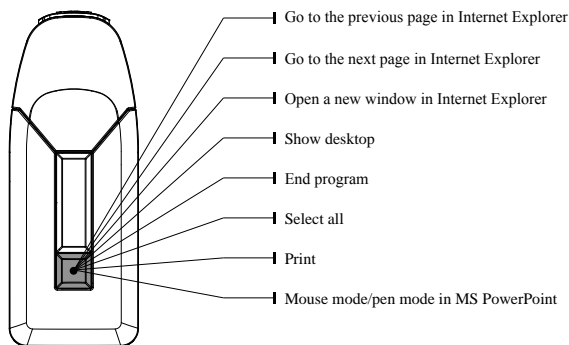
18

I. Functions which can be activated using the function key

-Use in the Windows OS, not with the MAC OS

-All functions can be activated easily by moving the finger

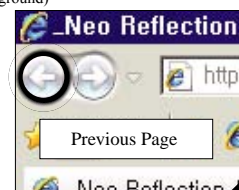
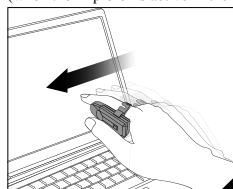
-This product is well suited to presentations and surfing the Internet. There are a range of functions integrated into the function key which enable the easy execution of numerous operations



19

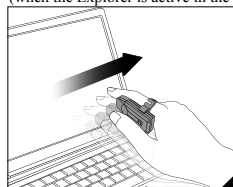
II. Functions in Windows

- Going to the previous page in Internet Explorer with the function key (when the Explorer is active in the foreground)



- Press the function key when the mouse is not moving, then move the mouse parallel to the left while holding down the function key
- After ending the movement, immediately release the function key without moving

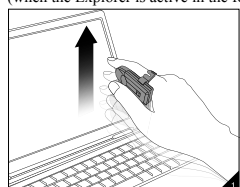
- Going to the next page in Internet Explorer with the function key (when the Explorer is active in the foreground)



- Press the function key when the mouse is not moving, then move the mouse parallel to the right while holding down the function key
- After ending the movement, immediately release the function key without moving.

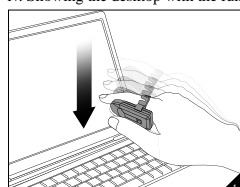
20

- Opening a new window in Internet Explorer with the function key (when the Explorer is active in the foreground)



- Press the function key when the mouse is not moving, then move the mouse parallel to the up while holding down the function key
- After ending the movement, immediately release the function key without moving. This will carry out the function. (With other applications like Word, Photoshop, etc. a new window is opened)

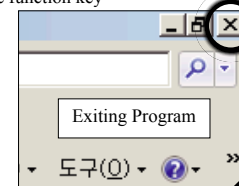
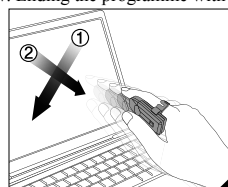
- Showing the desktop with the function key



- Press the function key when the mouse is not moving, then move the mouse parallel to the down while holding down the function key
- After ending the movement, immediately release the function key without moving.
- If this process is carried out again, the page in front of the desktop display will be restored.

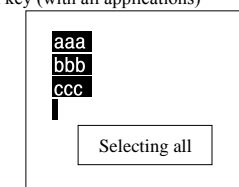
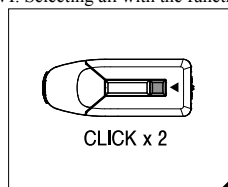
21

V. Ending the programme with the function key



- Press the function key when the mouse is not moving, then draw an "X" in the air with the mouse by holding down the function key
- After ending the movement, immediately release the function key without moving. This will carry out the function.
- Note: The "X" needs to be executed clearly. If it is not drawn well, a different, unintended function may be executed.

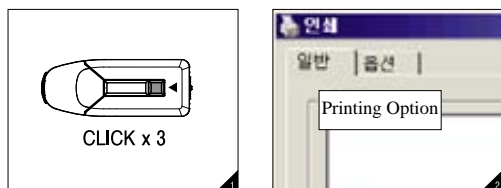
VI. Selecting all with the function key (with all applications)



- Press the function key twice in quick (<0.6sec) succession
- The document or page will be selected in full

22

vii. Printing with the function key (with all applications)



1. Press the function key three times in quick(<0.6sec) succession
2. This will open the window to activate the printer

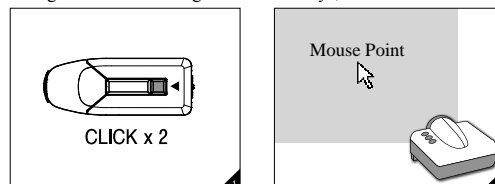
※ Notes:

- Do not release the function key before the mouse movement has been completed
- When using the function key, quick mouse movements are required
- If the mouse movement is not executed properly while using the function key, an unwanted function may activate
- When opening a new window in Internet-Explorer, Explorer must always be active in the foreground (when a different window or program is selected, click on the Explorer window)
- Since the "End program" function exits the last opened programme, it is necessary to always check which programme was last opened

23

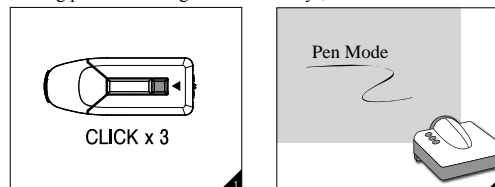
8. SELECTING FUNCTIONS DURING PRESENTATIONS

I. Switching mouse mode using the function key (for MS PowerPoint in full-screen mode)



1. Press the function key twice in quick(< 0.6 sec) succession while PowerPoint is already running
2. The mouse shall change to PowerPoint mouse mode

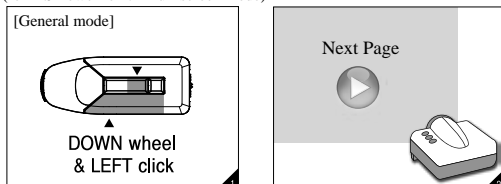
II. Switching pen mode using the function key (for MS PowerPoint in full-screen mode)



1. Press the function key three times in quick(<0.6 sec) succession while PowerPoint is already running
2. The mouse shall change to PowerPoint pen mode
3. Left-clicking will open the pen function
4. To return to mouse mode press the function key twice in quick succession

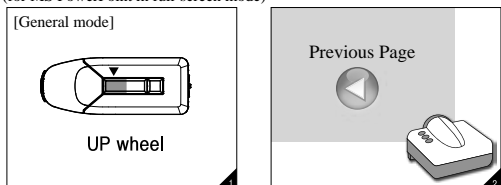
24

III. Skipping to the next page using the function key (for MS PowerPoint in full-screen mode)



1. Either press the scrolling down button or left-click while PowerPoint is already running
2. PowerPoint will skip to the next page

IV. Skipping to the previous page using the function key (for MS PowerPoint in full-screen mode)



1. Press the scrolling up button while PowerPoint is already running
2. PowerPoint will skip to the previous page

25

9. FAQ

1. Sometimes the cursor doesn't move when in air mode. Why not?

To make using the Neo mouse as easy as possible, it was designed in such a way that the cursor works when the thumb touches the touchpad. Since the cursor will not function without this contact, make sure you touch the touchpad with your finger. If you do not wish to control the mouse by thumb contact, switch to free mode described in the "Shifting the movement mode with the air mouse" section.

2. After switching from laser mode to air mode and after attaching the mouse to the finger, the X-Y spatial axis behaves in reverse for a while. Why?

After switching from laser mode to air mode, attaching the mouse to the finger adjusts the position of the mouse in the room by either 90° or 270°. In order for the mouse to identify this adjustment, it needs to remain motionless for two to three seconds. The spatial axis shall then register correctly.

3. When the mouse hasn't been used for a certain period, the cursor won't move any more. While restarting the device does restore the manoeuvrability of the mouse, is there another way to do this?

If the mouse is not used for a period of more than eight minutes, it automatically switches to idle mode in order to preserve its battery life. In this mode, the cursor will not move. To exit idle mode, move the scroller either up or down or left or right-click.

4. When charging the battery, is it possible to determine if it has fully charged or not?

When charging the battery, the LED display of the function key will illuminate bright green. Once charging has finished, the LED will go out.

5. Are there especially easy ways to use the device?

When using the air mouse it is easier not to use the whole arm to move the cursor, but just the wrist while propping up the arm.

6. Can I change the functions of the operating keys myself?

The reverse mode is explained in the section "Shifting the movement mode with the air mouse".

7. When using the air mouse, the movement can sometimes fluctuate a little. Can anything be done about this?

The cursor sometimes moves a little when air mode is started. In this case, place the mouse onto a flat surface for 5 seconds.

8. When using air mode, the cursor stops for a short time after clicking. Why?

It is actually difficult to double-click the thumb against the index finger in the air without changing the position. To alleviate this, the mouse was constructed in such a way that shortly after the first click, the cursor is stopped for a moment. This stoppage is thus a normal occurrence.

9. When using the air mouse, the cursor doesn't always work smoothly. What can I do?

Please consult the section "Disruption to wireless transfer" in the "Additional types of use" section of the "Types of uses of the mouse" chapter.

26

10. WARRANTY CONDITIONS

1. Warranty period (period for free repair)

- the warranty period starts on the day of purchase and lasts 12 months

2. Exclusion of the free warranty

Repair costs or costs for the exchange of the entire device shall be incurred within the warranty period in the following cases:

- Damage to the device as a result of operating errors or careless use
- Damage to the device as a result of shaking or impacts
- Damage to the device as a result of penetration of liquids, dirt or corrosive substances
- Damage to the device as a result of the usage of additional devices not authorised by the manufacturer
- Damage to the device as a result of errors committed by other users
- Damage to the device as a result of acts of God

3. Exchange conditions

- Error in product selection
- Damage to the device during shipment
- Since the exchange can only be carried out at the place of purchase, any inquiries in regard to exchanging products are to be attained from there
- Exchange is not permitted without a receipt, invoice or other proof of purchase.

4. Further conditions

- Exchange is not permitted when the damage to the product is caused by a mistake of the buyer.
- The buyer is responsible for determining the product's properties
- Repair and exchange are not permitted when the buyer has opened or modified the device

27

11. PRODUCT DATA

Use options: Windows 2000/XP/Vista/7, MAC OS

Charging: Micro USB charge / integrated lithium polymer battery

Charge duration: Some 1-2 hours

Operating time: Some 24 hours

Range: Some 10 meters (without obstacles)

Transmission: RF 2.4GHz

28

12. LETTER OF GUARANTEE

1. Quality guarantee and limit of liability

- I. Neither the design nor the manufacture of this product has any material defects.
- II. The warranty period for this product starts on the date of purchase. Every guarantee is dependent on the letter of guarantee and purchase confirmation.
- III. Incurred product defects for which the buyer is not responsible shall be repaired free of charge within 12 months of the purchase date.
- IV. Product defects are rectified either by exchanging or repairing it.
- V. Damage caused by the buyer is rectified by fee-based repair (if repair of the damage is possible). If repair is not possible, neither exchange, repair nor refunding of the purchase price is permitted.

2. Exclusion of guarantee

- I. for damage or minor defects caused by the buyer or during transport
- II. for damage or minor defects which are repaired by unauthorised persons or by the buyer
- III. for damage and defects which occurred as a result of external factors, for example, natural catastrophes

3. Exercise caution when using the product

Please note that we shall not be held liable for any damage or defects which are brought about as a result of improper use.

www.neoreflexion.net

FCC Information to User

This equipment has been tested and found to comply with the limits for a Class B digital device, pursuant to Part 15 of the FCC Rules. These limits are designed to provide reasonable protection against harmful interference in a residential installation. This equipment generates, uses and can radiate radio frequency energy and, if not installed and used in accordance with the instructions, may cause harmful interference to radio communications. However, there is no guarantee that interference will not occur in a particular installation. If this equipment does cause harmful interference to radio or television reception, which can be determined by turning the equipment off and on, the user is encouraged to try to correct the interference by one of the following measures:

- Reorient or relocate the receiving antenna.
- Increase the separation between the equipment and receiver.
- Connect the equipment into an outlet on a circuit different from that to which the receiver is connected.
- Consult the dealer or an experienced radio/TV technician for help.

Caution

Modifications not expressly approved by the party responsible for compliance could void the user's authority to operate the equipment.

FCC Compliance Information : This device complies with Part 15 of the FCC Rules. Operation is subject to the following two conditions: (1) This device may not cause harmful interference, and (2) this device must accept any interference received, including interference that may cause undesired operation

IMPORTANT NOTE:

FCC RF Radiation Exposure Statement:

This equipment complies with FCC RF radiation exposure limits set forth for an uncontrolled environment. This equipment should be installed and operated with a minimum distance of 20 centimeters between the radiator and your body. This transmitter must not be co-located or operating in conjunction with any other antenna or transmitter.

IMPORTANT Safety Instruction:

CAUTION

To reduce the risk of electric shock, do not remove the top cover (or the rear section).
No user serviceable parts inside, refer servicing to qualified personnel.



This symbol, wherever it appears, alerts you to the presence of uninsulated dangerous voltage inside the enclosure-voltage that may be sufficient to constitute a risk of shock.



This symbol, wherever it appears, alerts you to the important operating and maintenance instructions in the accompanying literature. Please read the manual.

- 1) Read these instructions.
- 2) Keep these instructions.
- 3) Heed all warnings.
- 4) Follow all instructions.
- 5) Do not use this equipment near water.
- 6) Do not use near any heat sources such as radiators, heat resistors, stove, or other equipment that produce heat.

CAUTION
RISK OF EXPLOSION IF BATTERY IS REPLACED
BY AN INCORRECT TYPE.
DISPOSE OF USED BATTERIES ACCORDING
TO THE INSTRUCTIONS

CONTACT INFORMATION

Manufacturer Address : 1 Floor, Bongmyung-Dong, Yoosung-Gu, Daejeon, Korea

To locate in-country Neo Reflection distributors of the Neo Mouse, please refer to the Neo Reflection Website
<http://www.neoreflexion.net/>

These distributor(s) represent local contacts for this product.

CORPORATE HEADQUARTERS:

Neo Reflection

1 Floor, Bongmyung-Dong, Yoosung-Gu, Daejeon, Korea

Tel: +82-70-7787-4043

Fax: +82-42-824-4043

Email: scs@neoreflexion.net

Web: <http://www.neoreflexion.net/>

EUROPEAN UNION “DECLARATION OF CONFORMITY”

DECLARATION OF CONFORMITY

Neo Reflection

1 Floor, Bongmyung-Dong, Yoosung-Gu
Daejeon, Korea

declare under our sole responsibility that the product(s)

Neo Mouse – NM930308001M
Neo Mouse Receiver – NM930308001U

to which this declaration relate(s) is in conformance with the following standards:

EN 301 489-1 V1.6.1:2008
EN 301 489-17 V1.2.1 :2005
EN60950-1:2006
EN 300 328 V1.7.1:2006

following the provisions of the 1999/5/EC Directives.