

## **Copyright**

This manual copyright-based company, and the manual All rights reserved. Without our written permission for any part of this manual in any form (electronic, photocopying or otherwise) be modified, copied, or transmitted.

## **Statement**

The user manual is no guarantee of any kind, express or implied position. If any result of this manual or its related products that directly or indirectly caused by loss of data, loss of profits and other damages, the Company and its respective employees will not bear any responsibility. Products mentioned in this manual specifications and pictures and text for information purposes only, the content will be updated according to actual situation, without notice.

## **Trademark**

The user guide talks about the product name and logo for illustrative purposes only, and these names may be registered trademarks or copyrights, and property of their respective companies.

## **Using environmental cues**

- Avoid dusty or dirty environment, the use of computers.
- Do not use in wet environments the computer, such as the computers were exposed to rain or moisture, or use in a wet basement; the same time do not put a tablet near the steam appliances, such as rice cookers, kettles and so on.
- Do not expose the computer to direct sunlight for a long time the place, especially not the Tablet PC will be directly affected by the stay in the car in the sunlight.
- Use the Tablet PC, be sure that vents unobstructed, to help heat dissipation. Avoid uneven surfaces too soft a soft mat or pad used on the desktop, such as mattresses, blankets, sofa, to prevent the cooling hole plug; the same time, unless there is good ventilation, away from the heater or electric heater and other heat sources.
- Do not place the computer in the cold (zero degrees Celsius) or heat (50 degrees Celsius) environment, which could lead to hardware system can not function properly.
- Do not place the tablet on the magnetic material nearby.
- Do not place the Tablet PC on placed center of gravity of the cart chair or table in order to avoid product damage caused by the decline.

- Do not place heavy objects on the Tablet PC in order to avoid unnecessary damage to the computer.
- Keep the computer to withstand severe shock or impact; carrying backpack Tablet PC must have anti-collision cushion, backpack should avoid placing too many things simultaneously, so as not to crush tablet PC LCD screen.
- Do not spill any liquid on the tablet PC; should avoid using the computer, eat, drink, please stay away from computer components to avoid pollution caused by failure, or even dumped on the computer. Do not use wet in the palm of tablet PCs, to avoid infiltration of water droplets inside the computer.
- Takeoff and landing, do not use the Tablet PC; near medical equipment in hospitals also do not use, so as not to interfere with the normal operation of equipment.

### **Caution**

- Do not operate the computer for a long time, which may lead to fatigue damage. Tablet PC screen for a long time watching the screen or external monitor can cause eye fatigue; too long to allow the body to maintain the same posture or repeat the same action, it may cause fatigue damage, such as over-frequent use of keyboard, touchpad and mouse. The way to work and rest to operate, will help improve your work efficiency.
- Please adjust the angle of the display, desktop and chair height, select the most reasonable and most comfortable position.
- When the computer is functioning or charging, the heat will distribute the system to the machine surface, do not tablet long lap or any part of the body in order to avoid high temperature may cause physical discomfort.
- Do not use sharp objects on the touch screen hard-Touch program, which may cause damage to the touch screen.
- To ensure normal operation of the machine to avoid overheating of the fuselage, the body Do not block or close the vents.
- Do not push objects into air vents or openings of your computer, it may cause damage to internal components.

- When the system error caused the computer does not shut down properly, please drop off the power switch can be forced.

#### Touch screen precautions

- Do not place any objects on the touch screen to avoid the pressure caused by damage to internal components.
- Do not use fingers and sharp objects to touch the touch screen.
- Touch screen should avoid contact with hard objects (buttons, straps, belt buckles, etc.) to avoid scratching.
- Do not use any chemicals wipe the touchscreen.
- Please use the special cloth wipe dust.
- Do not touch the liquid immersion, to avoid damage to internal components.

#### Note power adapter

- This product only in accordance with the power adapter label for proper voltage type of work the next. If you can not determine the type of voltage you are using, your dealer or local power company for advice.
- Do not use this product with the power adapter, this product can not be used for other electrical equipment, power adapter, which may result in serious consequences.
- Use extension cord power outlet, please note the total electrical load, to avoid overload.
- Do not place anything on the power line, do not place the power cord to be easily trampled areas.
- Unplug the power cord from the outlet, grasp the plug part, do not directly pull the power cord.
- Power adapter to a certain extent the work of heating, place it in a good environment cooling conditions.

#### Battery pack precautions

- Please use this product with the battery or from authorized resellers the same type of battery.
- Remove and replace the battery in before you turn off the power.

- Do modifications to the battery pack or battery pack without dismantling.
- Do not play with the battery. Keep batteries out of children's reach.
- Do not expose the battery to an unsafe environment. Do not place the battery in a fire, otherwise it will cause an explosion.
- According to local government regulations disposing of batteries, please do not discard.

### **Clean**

- Clean flat front of the computer, turn off the computer, unplug the power plug, remove the battery pack.
- With stained water, and wring gently wipe dry with a soft cloth (preferably using the Tablet PC special cleaning cloth), do not use coarse or caustic cleaning computer items, do not use chemical or aerosol cleaners.

### **Maintenance**

- Do not attempt to service this product, improper removal can cause electric shock or other dangerous consequences. Have any questions, please contact the professional and technical services staff.
- Please keep the packaging the product in order to protect future Tablet PC repair.
- See specific warranty warranty Woozoo Tablet PC manual.
- The following circumstances, unplug the power cord, and technical services staff to seek professional help:
  - ✓ Have damaged the power cord and plug.
  - ✓ Body immersed in liquid.
  - ✓ Tablet PC or a shell burst out on the ground.

## DIRECTORY

<b>BOOK REVIEW .....</b>	<b>7</b>
MAIN CONTENT .....	7
RULES.....	7
<b>CHAPTER I   MACHINE DESCRIPTION.....</b>	<b>8</b>
1.1   FACE .....	9
1.2 LEFT .....	10
1.3   ON THE SIDE AND THE RIGHT.....	11
1.4   BOTTOM .....	12
1.5 BOTTOM SIDE.....	12
1.6   COMMON STATUS INDICATOR ICON .....	13
1.7   THE POWER BUTTON AND THE IMPLEMENTATION OF KEY .....	14
<b>CHAPTER II   GETTING STARTED .....</b>	<b>15</b>
2.1   SET THE WORKING SPACE .....	16
2.2   ABOUT THE BATTERY .....	18
2.3   AC ADAPTER CONNECTION.....	19
2.4   ON/OFF .....	20
2.5 TABLET PC PORTABLE.....	23
<b>CHAPTER III   POWER SYSTEM.....</b>	<b>24</b>
3.1   POWER ADAPTER .....	24
3.2   BATTERY PACK .....	24
3.3   POWER MANAGEMENT .....	31
<b>CHAPTER IV   BIOS SETTINGS.....</b>	<b>39</b>
4.1   ENTER THE BIOS SETUP INTERFACE .....	39
4.2   SAFETY-RELATED.....	41
4.3   SET THE BOOT SEQUENCE .....	42

4.4 RESTORE FACTORY SETTINGS .....	44
<b>CHAPTER V SOFTWARE INSTALLATION.....</b>	<b>46</b>
5.1 INSTALL THE DRIVER .....	46
<b>CHAPTER VI TROUBLESHOOTING.....</b>	<b>48</b>
<b>APPENDIX I SPECIFICATIONS .....</b>	<b>53</b>
<b>APPENDIX II SERVICE INFORMATION .....</b>	<b>54</b>

## BOOK REVIEW

### Main content

- Chapter I Machine Description This section describes the features of Tablet PC
- Chapter II Getting Started Introduce the basic issues with Tablet PC and common sense
- Chapter III Operations Describes basic operations Tablet PC
- Chapter IV Power System Tablet PC's power management introduced, and how reasonable the use of battery
- Chapter V BIOS Settings Introduce some basic issues in BIOS setup
- Chapter VI Soft Installation Driver installation method described
- Chapter VII Troubleshooting Describes how to troubleshoot simple computer fault
- Appendix Products specifications and service information

### Rules

The user guide icon appears, represented by the following meanings:



Information with a description of the icon, improper operation may cause data loss, equipment damage or personal safety hazard, especially made to alert the user, be sure to read and keep in mind.



Alerts you to a number of potentially damaging operations.



Marked key information, general precautions, terminology, related computer use common sense, reference information.



## Chapter I Machine Description

This chapter will introduce you to the basic components and Tablet PC features, including the following:

- Face
- Left
- Right and Back
- Bottom

### Status Indicator

The power button and the implementation of key



This manual and Quick Start Guide on the picture for reference only, product appearance and color and you could actually buy some models different from the real product.



## 1.1 Face



1. Camera: Built-in 30 million -200 million pixel camera (optional)
2. Touch screen: resistive / capacitive 8.9-inch screen (1024 \* 600, LED backlight)
3. Indicator: Power, battery and signal indicator

## 1.2 Left



1. From left to right direction icons:
2. Power input connector: For computer power and charge the battery.
3. USB (V2.0) interface: USB interface for connecting external devices used to support high-speed USB2.0.
4. Toggle switch: for the computer switch.
5. VGA Interface: VGA Interface (Mini HDMI switch to VGA) video output cable (VGA)



## 1.3 On the side and the right

### On the side



- 1.Speaker: on the side of a speaker on the side of the home side
- 2.Transmitter: wheat, voice transmitter

..

### Right



1. From left to right direction icons:
2. 1 . Microphone input jack: for connecting the microphone output
3. 2. Headphone output jack: for headphone output
4. 3.Mini USB interface: for connecting USB devices.

## 1.4 Bottom



## 1.5 Bottom side



From left to right direction icons:

1. Speaker: computer built-in speaker
2. TF card, TF card slot for inserting

## 1.6 Common status indicator icon

- 1 . TF card into the state
- 2 . Headset connection status
- 3 . Connect a microphone status
- 4 . Computer Switch
- 5 . Network Connection Status
- 6 . USB connection status
- 7 . VGA video connector



## 1.7 The power button and the implementation of key

The power button for turn on the computer, keys for direct operation in the implementation process, when you start the corresponding function, the light will turn on.



Forcibly shut down the computer may cause data loss!



All require the implementation of key operating system support, and only in the correct installation and configuration of the operating system, to be able to perform key functions normally. And implementation of key into the power button and touch-button type, specific to the actual model you purchased prevail.

## **Chapter II    Getting started**

This chapter describes the use of some basic issues Tablet PC, including the following topics:

- Set the working space
- Connect the battery
- AC adapter connection
- Power on / off
- Tablet PC portable

## 2.1 Set the working space

A good working environment for you and your computer are important. Inappropriate, high intensity work environment, and the hand or wrist joints, prolonged stress can cause physical discomfort or harm. Therefore, to ensure the appropriate use of the environment for you and your computer will be beneficial.



Set up your work space, make sure to read this user manual opening reference to "use environmental cues," part of the content.

### **Place the computer**

Computer needs to be placed on a flat surface, the display should not be higher than the level of attention, so that the eyes are too tired.

Work, should be placed in front of the computer and make sure there is enough space to easily operate other devices.

In the computer and leave enough space so you can adjust the display to change the angle of the display, the display will help get the best perspective.

### **Seating and posture**

Proper chair height and support the body is to provide you a key factor in reducing work fatigue.

The height of the chair should allow elbows with the keyboard flat or slightly lower, so that when you tap the keyboard shoulders relaxed.

Knees should be slightly higher than the hips, if necessary, raise the knee pads can be placed to relieve tension in your thighs.

Adjust the chair back to support the lower spine to live.

### **Lighting Environment**



Proper lighting can increase the visibility of the display and relieve eye fatigue.

Should not be placed on the computer screen reflected sunlight or bright indoor lights, please use items such as curtains or blinds to block the sun.

Do not place the computer may direct the eyes in bright lights before.

Computer work area lighting soft as possible, but please do not be placed in the light by reflecting light into your eye position.

### **Work habits**

In order to avoid a duplication of work due to prolonged discomfort or injury to you, if possible, please arrange your work different tasks. If you must use a computer a long time, then work your schedule as much as possible a decentralized way to reduce stress and improve efficiency.

Please be seated in the most relaxed position, as mentioned earlier, the appropriate placement of your chair and peripherals can reduce the pressure on your shoulders or neck and relieve back tension.

Please change your posture regularly to relax.

Often in a day's work activities or extend your hand and wrist.

## 2.2 About the battery



When using the battery pack, please note the following:

- 1 ) Disassemble the battery pack is not any
- 2 ) With the metal or conductive materials can not be contacted to avoid short contacts
- 3 ) To avoid the rain or soaked in water
- 4 ) Do not be put in place to take children

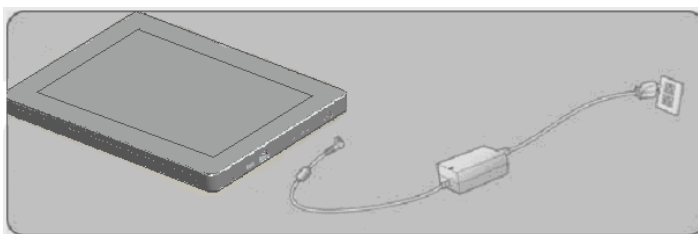


Before removing the battery pack, if you want to continue using the computer, plug in the AC adapter. Unless you have shut down to prevent data loss.

## 2.3 AC adapter connection

Follow these steps to connect the adapter:

- 1.Remove the adapter and power cord, connect the adapter and power cord.
- 2.The AC power cord into a power outlet
- 3.The AC adapter DC output plug into the computer power socket.
- 4.Verify that all connections have been fully connected



The adapter-based Tablet PC specific, do not be of use in other electrical equipment; other adapter with the adapter form although it may be similar, but not the Tablet PC-specific, do not use.



Because the voltage of different countries, the design of the power plug is different, if you will use this product in other countries, please choose a suitable local line or installed in a converted power outlet.

## 2.4 on/off

### Power on

Normal after the power is connected, open the LCD screen and adjust to the proper angle.

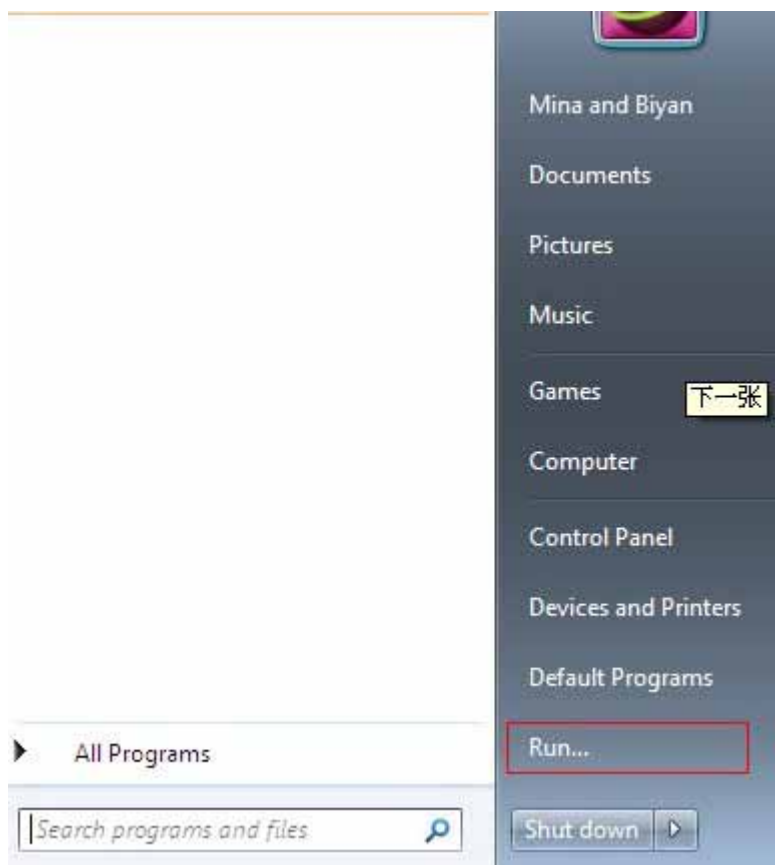
Tablet PC switches slide down the power button for about one second, you can start the computer.



In the opening and closing when the display panel, so be careful. Action on the screen is too large may cause irreparable damage. For details, please refer to the manual opening reference to "LCD screen note."

### Power off

In the operating system, click the "**Start**", then from the pop-up menu, select "**Turn Off Computer**", you can turn off the computer.



If the system error caused by the computer not shut down, slide the power switch down, then forced shutdown. Unless the system does not respond, do not force shutdown, which could cause data loss.



Off this section on the operation of all windows 7 is limited to operating systems, other operating systems, see the respective help documentation.

## 2.5 Tablet PC portable

If you want to carry out using the Tablet PC, please note the following:

- Sure you move all the disks before the Tablet PC operating have been stopped, check the built-in hard drive light is off.
- Turn off the computer's power supply or the computer to sleep.
- Please disconnect all previous mobile tablet PCs connected to an external device and AC adapter.
- Please do not carry through to mention the computer screen.
- Use the special bag to carry tablet PCs, and to avoid other objects placed together.



If you need to carry for short distances Tablet PC, and want to keep the current working status, you can set the Tablet PC to sleep, when you turn it on again, the computer will be restored to working condition before sleep.



Do not drive (or CD-ROM, etc.) when the mobile computer is still running, so that may damage the computer, especially the hard disk. Please standby or hibernate the computer's state of mobile computers.



If you need to bring the computer travel in different countries or regions, please note that check your power cord is suitable for local power standard, if necessary, purchase a power cord in accordance with local requirements. If you need a phone line connection, check the computer's modem and phone line is consistent with the local telephone system.

## Chapter III Power system

This chapter describes the power supply and power supply. Tablet PC's power supply, including AC adapter and internal battery. Includes the following topics:

- Power adapter
- Battery pack
- Power management

### 3.1 Power adapter

Power AC adapter function is to convert alternating current Tablet PC DC power needed.

On how to connect the power adapter, please see "Getting Started" chapter "Connecting the AC Adapter"



Please read before use "power adapter precautions."



Contains high voltage components inside the adapter in order to avoid bodily harm to you, do not disassemble the adapter, also not open to repair.

### 3.2 Battery pack

#### Charge

To the battery pack, first make sure the battery pack to the tablet PC has been correctly installed battery compartment. Plug the AC adapter to the computer, then connect to a power outlet, you can charge for the computer.

On how to connect the battery pack, please see "Getting Started" chapter "on battery"





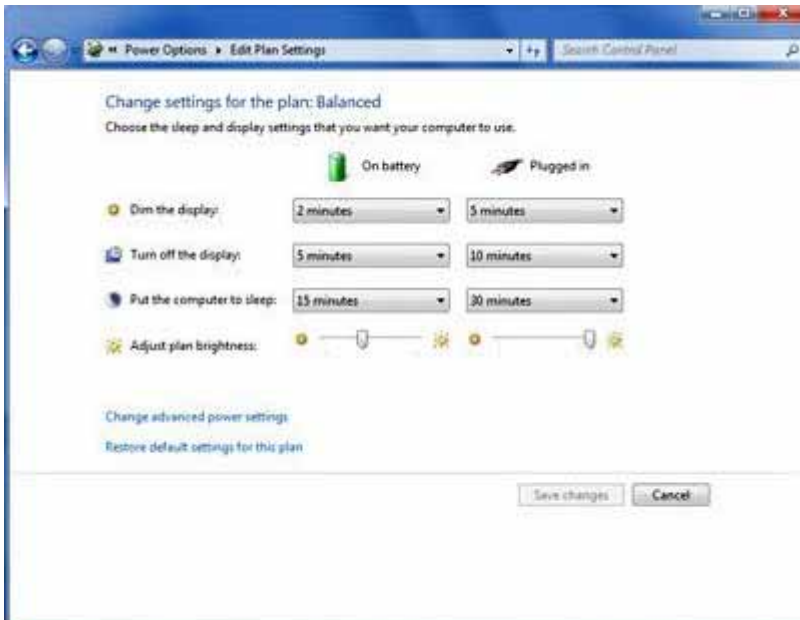
During charging, you can still operate on a normal computer. In the case of shutdown can shorten the charging time charging.



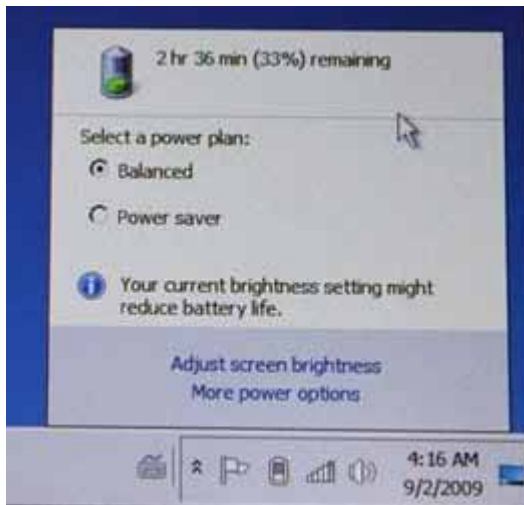
Please read before use "Battery pack precautions."

## Monitoring battery power

In the Windows 7 operating system, you can "control panel" view battery status. From the "Start"> "Control Panel"> "Power Options" in the "Power Options" window, click on the "meter" tab, you can view the current power supply and battery status.



Want to quickly see the current battery power is left, as long as the "Power Options" window, click the "Advanced" tab, then click the "always on task bar", it can view the thumbnails on the taskbar battery The remaining charge.



## **Life**

Tablet PC battery charge time, can continue to work time and the configuration of the operating system power management (for example: whether the power-saving features turned on), LCD display type and set the brightness, CPU type, memory size, a variety of devices (hard disk , CD-ROM, etc.) as well as the operation of the user's habits.

### **the low-battery warning**

In the Windows 7 operating system will automatically open the low-battery warning signal. Low battery alarm function can be in the "Power Options" window "Change plan settings" energy saving, tab settings.



When the battery power is low, connect AC adapter as soon as possible, and save the data on the computer. When the battery is completely exhausted, the computer shut down may lead to data loss.

### **Battery life**

Prolonged use of the battery will be degraded, that is, the performance of the battery with the use of time is gradually reduced. To maximize battery life, it is recommended that you:

#### **Calibration status of the new battery pack**

Prior to first use the battery pack, perform a "calibration" process:

1. Install battery into the battery slot, do not start; connection AC adapter the battery is fully charged.
2. Disconnect the AC adapter, battery pack power operation system
3. Fully discharged until the low battery warning.
4. Reconnect the AC adapter and fully charge the battery pack again.
5. Cycle the above steps until the battery is fully charged and discharged three times.



Or long-term for all new batteries do not use the battery, perform the calibration process, if more than two weeks to stop using the computer, we recommend that you remove the battery pack.



Do not place the battery pack to 50 degrees below 0 degrees Celsius or more, abnormal temperature will affect battery performance. Do not let battery short-circuit contact points, otherwise it will seriously affect the battery life and even damage. Do not drop, hit the battery pack. Do not put batteries into fire or near heat sources, otherwise it will cause battery explosion hazard. Please follow the correct way to deal with can not be used or discarded batteries.



Battery life and number of charge cycles is limited, when you find the battery pack fully charged, use the time to dramatically reduce the time, run the battery calibration process. If the battery pack can not be calibrated to enhance battery life is still very possible that your

battery life will do, it should be replaced with new battery pack. (Such as user-friendly adapter, please try to remove the battery to extend battery life.)

### 3.3 Power Management

Rational use of power options can reduce power consumption, the following description of power management through the aspects related to content.

#### **Set the power management mode.**

You can use Windows 7 operating system "control panel" in the "Power Options" to set the tablet PC built-in power management mode. From the "Start"> "Control Panel"> "Power Options."





## Power scheme that

In the "Power Schemes" option in the "Home / Office Desk, Portable / Laptop, presentations, has been open, at least power management, the maximum battery mode" and other projects. When you select a different mode after power configuration, the bottom will display the appropriate power management configuration.

When the computer	Puts through the power source	Uses the battery
closure	n minute	n minute
monitoring device		
closure hard disk		
system waits for an opportunity		
the system dormancy		

When the computer	on	battery power
N min m minutes off the monitor		
Turn off hard disks		
System standby		
System Sleep		

The meaning of the table above is when you turn on the power situation, n minutes, the computer does not carry out any operation, the computer will automatically turn off the monitor. In the case of using battery power, m minutes, the computer does not carry out any operation, the computer will automatically turn off the monitor. Other off the hard disk, system standby, system options such as the meaning of sleep on.

The default configuration power configuration options as follows:

Mode	status
Home / Office Desk	power on, CPU running at full speed; battery power, CPU to power saving mode.
Portable / Laptop	CPU system determined by the size depending on the workload at full speed or power-saving mode.
Demo	for demonstration use, and never turn off the monitor, CPU run in power saving mode.
Always has been left open	for open, CPU running at full speed, do not enter the system in standby mode, turned on for the need to maintain continuous operation of the computer.
Minimum power management	system determined by the size depending on the workload or CPU power-saving mode at full speed.
Max Battery mode	to minimize battery consumption, maintaining the longest battery life, for going out, only the case of battery-powered, CPU run in power saving mode.

You can also use their own mode of power management settings for your program, and to be saved.

### **System standby / sleep**

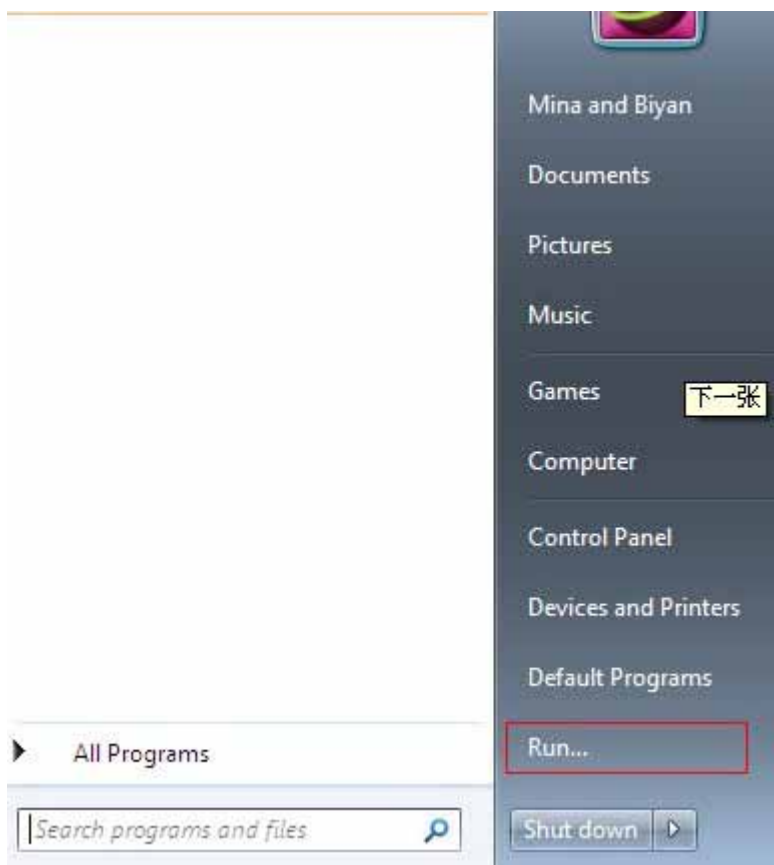
System standby and hibernation is an important part of power management, the following will be briefly.

#### **System standby**

Through energy-saving system standby is set in a period of time when you do not operate a computer, the system will store the current working memory, and peripherals (monitors, hard disk) is turned off, but the power light flashing, as long as Press the power button, the computer will revert to your original working condition.

#### **System sleep**

Sleep is the energy system by setting a time when you do not operate a computer, the system will store the current work to the hard disk and the computer is turned off (power light off), then press the power button as long as the re- , the computer will revert to your original working condition. Windows 7 to enter system sleep mode, you can order the "Start" menu bar option to shut down the system directly into "sleep" mode shortcut.



Into the system sleep / standby

There are several ways you can enter hibernation or standby mode:

- Depending on your choice of power management mode, when you do not operate the computer within a certain period of time, the system automatically enters standby or hibernation mode.
- In the system, press the "Start", click "Turn Off Computer", click the standby mode.

Press the power button can make the system into hibernation or standby, depending on your settings in the operating system. Specific settings are as follows:

Press the "Start"> "Control Panel"> "Power Options." Set sleep mode.

- Windows7 user, (WindowsVista can also use the following method, the steps are the same), allowing the system to sleep (in WindowsVista and Windows7, such a model is also called "Away Mode"), but not disconnected from the network.

HKEY\_LOCAL\_MACHINE\SYSTEM\CurrentControlSet\Control\SessionManager\Power , Run Registry Editor, and then click to enter:

HKEY\_LOCAL\_MACHINE \ SYSTEM \ CurrentControlSet \ Control \ SessionManager \ Power, and then in the right window, right-click on a blank, create a new "DWORD32 bit" value, and was named "AwayModeEnabled", double-click to the keys, and assign to " 1 "(16 hex). After changes, exit the registry editor.



If you do not want to leave Windows7 mode, you can enter:

HKEY\_LOCAL\_MACHINE \ SYSTEM \ CurrentControlSet \ Control \ SessionManager \ Power, will be "AwayModeEnabled" delete.

## Growth of battery-powered skills

There are several ways you can battery case in the growth of battery-powered time:

- Adjust the brightness of LCD screen. LCD backlight power consumption of large proposals in the case do not dim the backlight.
- With reasonable power management mode. You can set for your power management mode.
- Use of sleep key. Sleep can greatly save battery consumption, if you need some time away from the computer, we recommend that you enter the computer before leaving hibernation or standby.
- Unplug the PC card is not in use.
- Period of time (2-4 weeks) a battery calibration.



Develop good saving habits is the key to extending battery life and also help extend battery life.

## Chapter IV BIOS settings

BIOS set includes the hardware and system software settings important information. When first started, BIOS will set this part of the value as a system. This chapter contains the following main elements:

- Enter the BIOS setup interface
- Set Password
- Set the boot sequence
- Restore factory settings

### 4.1 Enter the BIOS setup interface

After boot, when the startup screen appears, plug in USB keyboard, press the DEL key to enter the system settings interface.

The basic interface is as follows:



The following table describes the simple BIOS setup menu.

Menu	Content
Main	Main content about basic system environment
Advanced	Advanced to set the system chip set features the main menu.
Security	Security system security-related content.
SysInfo	SysInfo the company information, CPU information and BIOS, KBC version.
Boot	Boot on the contents of the boot device settings
Exit	Exit end of the set of relevant content.



Set menu or button on the details of options please refer to the help information. Installation of the content may be due to functional improvements or other reasons vary.



The initial setting is based machine to do the best BIOS configuration, it is recommended that you do not change easily.





This chapter shows the BIOS set the picture content of the image to install the driver on your computer may be slightly out of showing the specific contents of your BIOS to your flat-panel computer display prevail.

## 4.2 Safety-related

You can set this option in some security-related issues.



### Set Supervisor Password

By setting the root password, you can restrict that only authorized users can access the system.

Press <Enter> key to set or clear the supervisor password.

### Set User Password

The basic process of setting user password and set the root password, as two different passwords there are different rights, through the root password to enter BIOS setup interface, and user password can enter the operating system.

### **Password On Boot**

This option is used to activate the system starts the need to enter a password. Enabled-> start requires the user to enter a password; Disabled-> start without a password. (User password and super user passwords can be activated.)

### **Fixed Disk Boot Sector**

This option is used to set the boot sector of the hard drive write protection to prevent viruses.

### **TPM Security Setting Menu**

This option is used to set the TPM security control functions, the specific content, please follow the prompts to enter the next menu level, detailed operation please refer to TPM use help. (TPM is an optional feature, if this feature is to be determined depending on the specific model, please type in your actual purchase date)



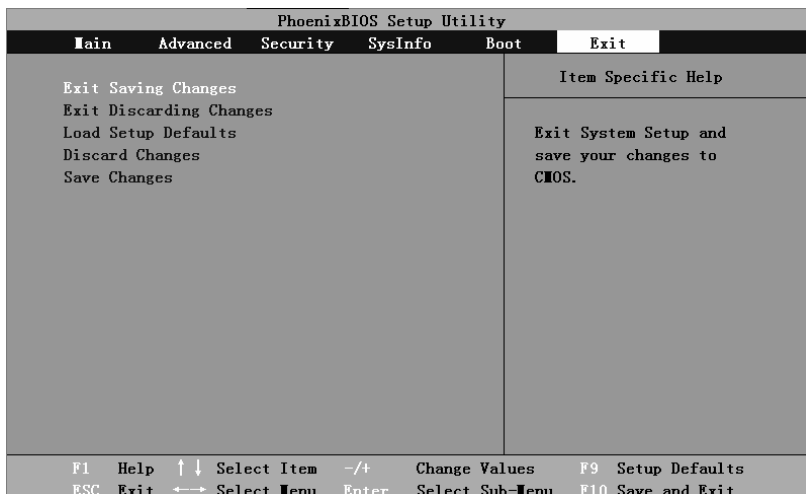
Do not lose or forget the password, if you forget the password, you need to manufacturers for help.

## **4.3 Set the boot sequence**

You can set this option Tablet PC boot sequence, the device will need to first start to move to the top. (Please refer to the help instructions to operate)

PhoenixBIOS Setup Utility					
Main	Advanced	Security	SysInfo	Boot	Exit
Boot priority order: 1: IDE HDD:   xxxxxxx   xxxxxxxxxxxx 2: IDE CDROM: xxx   xxxxxxxxxxxxxxxx 3: USB HDD : 4: USB KEY: 5: USB CDROM: 6: USB FDC: 7: PCI LAN:				Item Specific Help  Keys used to view or config devices: Up and Down arrows select a device. <+> and <-> moves the device up or down. <f> and <r> specifies the device fixed or removable. <x> exclude or include the device to boot. <Shift + 1> enables or disables a device. <1 - 4> Loads default boot sequence.	
F1	Help	↑ ↓	Select Item	-/+	Change Values
ESC	Exit	← →	Select Menu	Enter	Select Sub-Menu
				F9	Setup Defaults
				F10	Save and Exit

## 4.4 Restore factory settings



### Exit Saving Changes :

Save the settings to change the user data and exit the system setup interface.

### Exit Discarding Changes :

Does not save settings and exit data system settings interface.

### Load Setup Defaults :

Restore the default values for all setup items.



If you change the BIOS settings and can not return to the initial state, the appropriate actions you can set the value back to the factory.

### Discard Changes :

Users can give up all the data changes, restore the previous (before change) settings.

### Save Changes :



W00Z00 Tablet PC

---

Save the setting data, but does not exit the system setup interface.

## Chapter V Software installation

This chapter briefly describes the driver installation. Includes the following topics:

- Install the driver

### 5.1 Install the driver

You can choose to install according to the actual needs of the driver, follow the prompts can be a simple operation.

Following the windows7 system driver installation instructions:

#### Chipset Driver Installation

- 1、Open the driver CD you can see a folder named Chipset, double-click to enter.
- 2、Double-click the setup.exe file, the driver installation begins, follow the prompts to complete the installation.
- 3、Setup dialog box is closed, if this time the screen out of the dialog window asking whether you want to restart the tablet PC to complete the setting, click OK. If the screen does not jump out of the dialogue window asking whether to restart the tablet PC, the device driver installation is complete.
- 4、Restart the tablet PC, the device drivers installed.

#### Graphics card drivers installed

- 1、Open the driver CD you can see a folder called Graphics, double-click to enter.
- 2、Double-click the setup.exe file, the driver installation begins, follow the prompts to complete the installation.
- 3、Setup dialog box is closed, if this time the screen out of the dialog window asking whether you want to restart the tablet PC to complete the setting, click OK. If the screen does not jump out of the dialogue window asking whether to restart the tablet PC, the device driver installation is complete.
- 4、Restart the tablet PC, the device drivers installed.

#### Sound card driver installation

- 1、Open the driver CD you can see a folder called Audio, double-click to enter.

2、 Double-click the setup.exe file, the driver installation begins, follow the prompts to complete the installation.

3、 Setup dialog box is closed, if this time the screen out of the dialog window asking whether you want to restart the tablet PC to complete the setting, click OK. If the screen does not jump out of the dialogue window asking whether to restart the tablet PC, the device driver installation is complete.

4、 Restart the tablet PC, the device driver installation is complete

## **NIC driver installation**

1、 Open the driver CD you can see a folder called LAN, double-click to enter.

2、 Double-click the setup.exe file, the driver installation begins, follow the prompts to complete the installation.

3、 Setup dialog box is closed, if this time the screen out of the dialog window asking whether you want to restart the tablet PC to complete the setting, click OK. If the screen does not jump out of the dialogue window asking whether to restart the tablet PC, the device driver installation is complete.

4、 Restart the tablet PC, the device driver installation is complete

## **LAN (optional) driver installation**

1、 Open the driver CD for the Wlan can see a folder, double-click access to machines based upon the model of choice card driver.

2、 In the corresponding models in the double-click the network card driver Setup.exe file, the driver installation begins, follow the prompts to complete the installation

3、 Setup dialog box is closed, if this time the screen out of the dialog window asking whether you want to restart the tablet PC to complete the setting, click OK. If the screen does not jump out of the dialogue window asking whether to restart the tablet PC, the device driver installation is complete.

4、 Restart the tablet PC, the device driver installation is complete

(Note: This disc is only part of the network card driver models, such as those listed in the driver model does not match, then do not install)



If you selected one already installed the driver, then, during the installation process, the program will prompt you have installed the driver and the driver version for comparison, it is recommended that you use the newer version.



Display pictures in this chapter for reference only, may be a slight on your computer display access, please prevail on your computer display.

## Chapter VI Troubleshooting

This chapter describes how to deal with common system problems, help in the search for technical staff before you read this chapter.



Serious problems may need to turn on the computer for repair, do not attempt to open and repair themselves. When you can not rule out the failure of this chapter, please contact your local dealer or an authorized XX electronic repair points, access to professional services.

### Adapter

Issue	process
Check the connector	to determine the power outlet and the computer's power cord is a reliable connection.
adapter is not powered	Check the status of the power cord and plug, if there is damage, please change.



Battery pack

Issue	process
Battery-powered battery pack is not possible	short of power, connect the AC adapter for charging.
	check the battery pack of hot and cold conditions, if the battery too hot or too cold, will not normally charge for a while, until the same room temperature before charging.
Connect AC adapter is not charging	If the battery is completely discharged, will not start charging immediately, wait a few minutes .  For the protection of battery life, only when the battery power less than 95%, the system will perform charging operation.
	If the light stays off, then battery life may end, please contact your dealer and replace the battery pack.
Battery pack is expected to continue to work at different times less than the operating system	and power management settings affect the state of battery-powered computer work time will therefore be different, you can try to reduce the brightness of the LCD screen of this kind may way to reduce system power consumption.  If you frequently use is not fully charged battery pack, battery pack may not be able to play its full capacity. Perform the battery calibration.

Standby / Sleep

Issue	process
The system can not enter standby / sleep	check whether you are running Windows Media Player software, if the software is running, then the computer may not enter the wait / sleep.

## Hard Drives

Issue	process
Can not be wrong hard disk boot	operating system or computer virus attack, leading to not start; clear the virus, in accordance with the operating system documentation for the correct settings. May be the operating system file error, refer to the operating system documentation.
File fragments may be too slow	Run Disk Defragmenter program to check the document and the disk situation.

## LCD

Issue	process
Black screen	Close the LCD screen is not black OK. Verify that the system does not enter sleep or wait state.

## Sound System

Issue	process
-------	---------

can not hear the sound	Check the software volume settings.
	Check the headset connection is secure.
	Check the Windows Device Manager. Ensure that the sound is turned on, be careful not to conflict with other hardware

## Printer

Issue	Process
The printer does not start	please check the printer is connected to power.
Recognized the printer and the computer can not communicate	the printer is turned on and online. Check the cable connecting the printer and the computer whether there is damage, and firmly connected. Verify that your printer is configured to recognize the printer.
errors	Check the printer documentation for typographical

## USB

Issue	process
USB device does not work	check the computer's USB port to connect USB devices and cables are secure. Confirm the USB device driver is installed correctly

## LAN

Issue	process
can not connect	You sure the interface card and network cable between the hub is connected securely.

## Appendix I Specifications

### Processor

- Intel® Atom™ processor Z530 (1.6GHz)

### Chipset

- Intel® US15

### Memory

- 1G DDR2 RAM (1 SODIMM memory slot, expandable up to 2G)

### Data Storage

- dedicated hard drive Tablet PC
- 32G ssd hard drive shock speed

### Video

- 300 000 - 200 megapixel camera (optional)

### Audio

- Built-in microphone
- Compatible with Intel® High Definition Audio

### I / O ports and connected devices

- USB 2.0 interface (2)
- microphone interface
- headphone jack
- VGA Interface (Mini HDMI switch to VGA)
- Si m card slot 1
- TF card slot 1

### Other

- Built-in microphone

### Weight and dimensions

- approximately 258mm x 183mm x 12.8mm (length x width x height)
- about 600 ~1,800g

## **Operating environment**

- Temperature
  - Operating: 5 ~ 35
  - Storage: -20 ~ 60
- Humidity
  - Operating: 20% to 80%
  - Save: 10% to 90

## **Power**

- Input: AC 100 ~ 240V 50/60Hz
- Output: DC 14.5 V 2 security

## **Operating System**

- Support Windows7



The specifications listed above are for reference only. Actual size will depend on users to buy the machine model.

## **Appendix II service information**

Thank you for purchasing this tablet in the country "three guarantees" policy within the scope of services provided, your computer can enjoy any one of the company nationwide electronic services provided by authorized service centers.

FCC NOTE : THE MANUFACTURER IS NOT RESPONSIBLE FOR ANY RADIO OR TV INTERFERENCE CAUSED BY UNAUTHORIZED MODIFICATIONS TO THIS EQUIPMENT. SUCH MODIFICATIONS COULD VOID THE USER'S AUTHORITY TO OPERATE THE EQUIPMENT.

This device complies with Part 15 of the FCC Rules. Operation is subject to the following two conditions: 1. This device may not cause harmful interference, and 2. This device must accept any interference received, including interference that may cause undesired operation.

This equipment has been tested and found to comply with the limits for a Class B digital device, pursuant to part 15 of the FCC Rules. These limits are designed to provide reasonable protection against harmful interference in a residential installation. This equipment generates uses and can radiate radio frequency energy and, if not installed and used in accordance with the instructions, may cause harmful interference to radio communications. However, there is no guarantee that interference will not occur in a particular installation. If this equipment does cause harmful interference to radio or television reception, which can be determined by turning the equipment off and on, the user is encouraged to try to correct the interference by one or more of the following measures:

- Reorient or relocate the receiving antenna.
- Increase the separation between the equipment and receiver.
- Connect the equipment into an outlet on a circuit different from that to which the receiver is connected.
- Consult the dealer or an experienced radio/TV technician for help.

To maintain compliance with fcc's RF exposure guidelines: This device and its antennas must operate with a separation distance of at least 20cm from all persons.