

KJC 3XBT Bluetooth Module

- Operation Description -

KJC 3XBT Bluetooth Module (Photo 1) is exclusively used in KJC wheel aligner for the purpose of wireless data transmission between the main controller PC and the sensor heads.

3XBT Modules always work in pair of the Master/Slave mode.

3XBT slave is welded on a board that connects + 5V DC power to the module (Photo 2). The board is mounted in the sensor head of the aligner

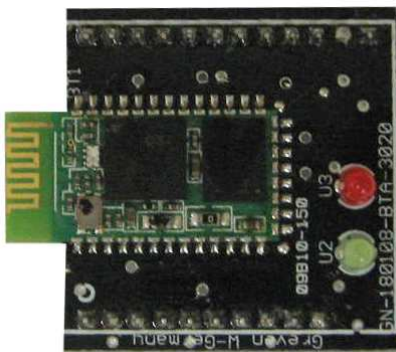


Photo 1 – 3XBT Bluetooth Module

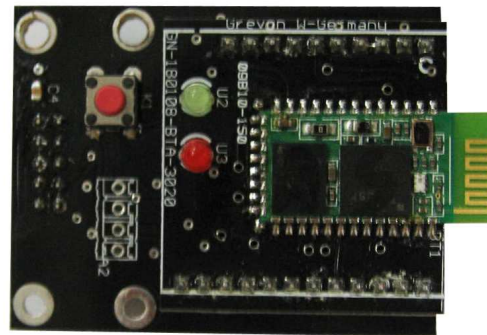
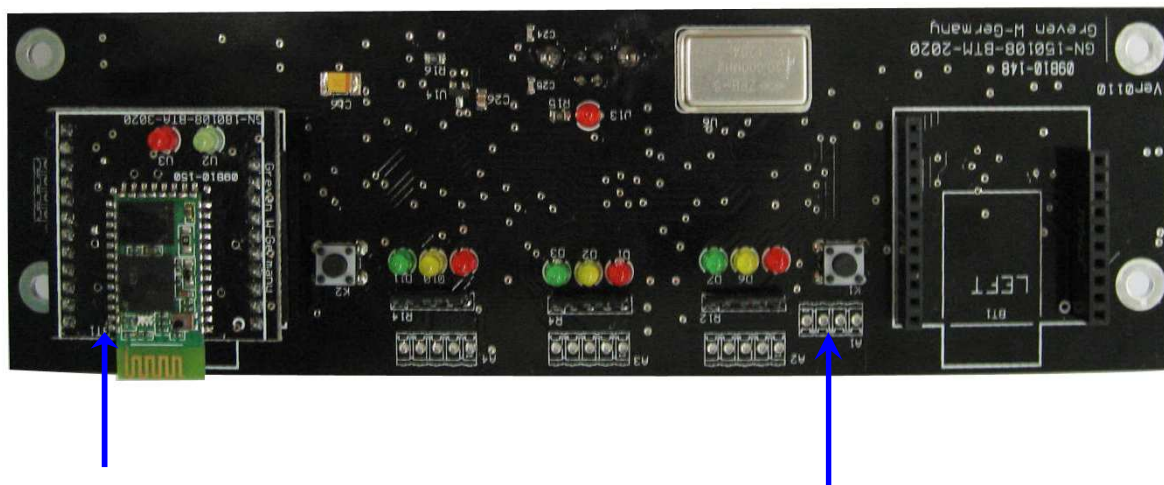


Photo 2 – 3XBT Slave on a Board

3XBT master is welded on a PC adapter board which can be powered by D.C regulated power supply or by USB port of the PC (Photo 3).

When power is on the red LED on 3XBT will flick in a rate of 750ms. When a 3XBT master and a 3XBT slave are pairing the LEDs on both modules are flick more quickly in a rate of 500ms. The red LEDs on both module boards flicking slower at a rate of 1s shows that 3XBT master and slave are paired and are ready for data transmission.



3XBT welded on the PC Adapter Board

PC Adapter Board

Photo 3 – 3XBT Master on an adapter board

Changes or modifications not expressly approved by the part responsible for compliance could void the user's authority to operate the equipment

In case, the label of the module is not visible to the end user at the time of purchase of the final host product, the final host product must show the sentence:

Contains FCC ID: **YZ3-3XBT**

The module must be used with the antenna supplied together with the Module.

The antenna of this transmitter must be installed to provide a separation distance of at least 20 cm from all persons, and must not be co-located or operating in conjunction with other antennas or transmitters within a host device, except in accordance with FCC multitransmitter product procedures.

END