



# UWB Host & Docking Station User Manual

1.Description

2.Structure

3.Specfication

4. Installatiin

Step1. Host Installation

Step2. Docking Station Installation

Step3. Association

5. How to use

6. FCC STATEMENT

# 1. Description

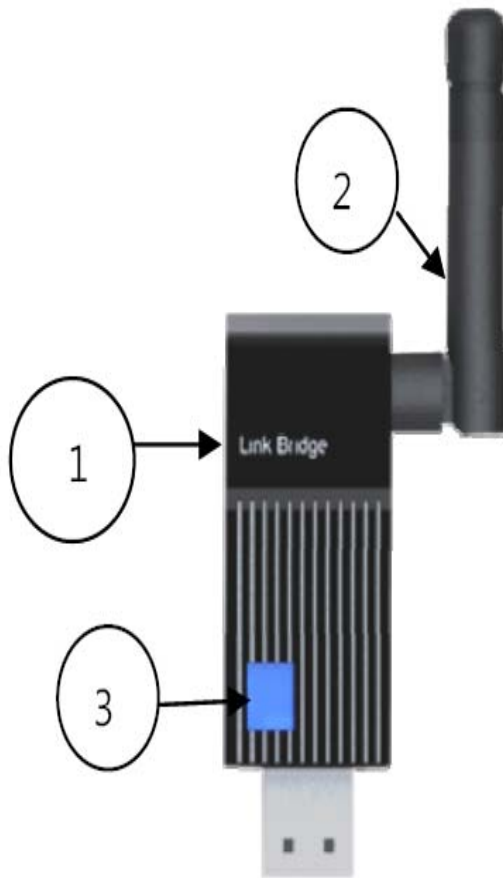


You can connect any PC to any monitor with DVI (VGA) by UWB Docking Station.

Docking Station give up to 10m(recommanf within 7.5m)of same-room range plenty of distance to get comfortable and browse photos, document and surf the internet on your large screen full HD TV from your computer.

## 2 Structure

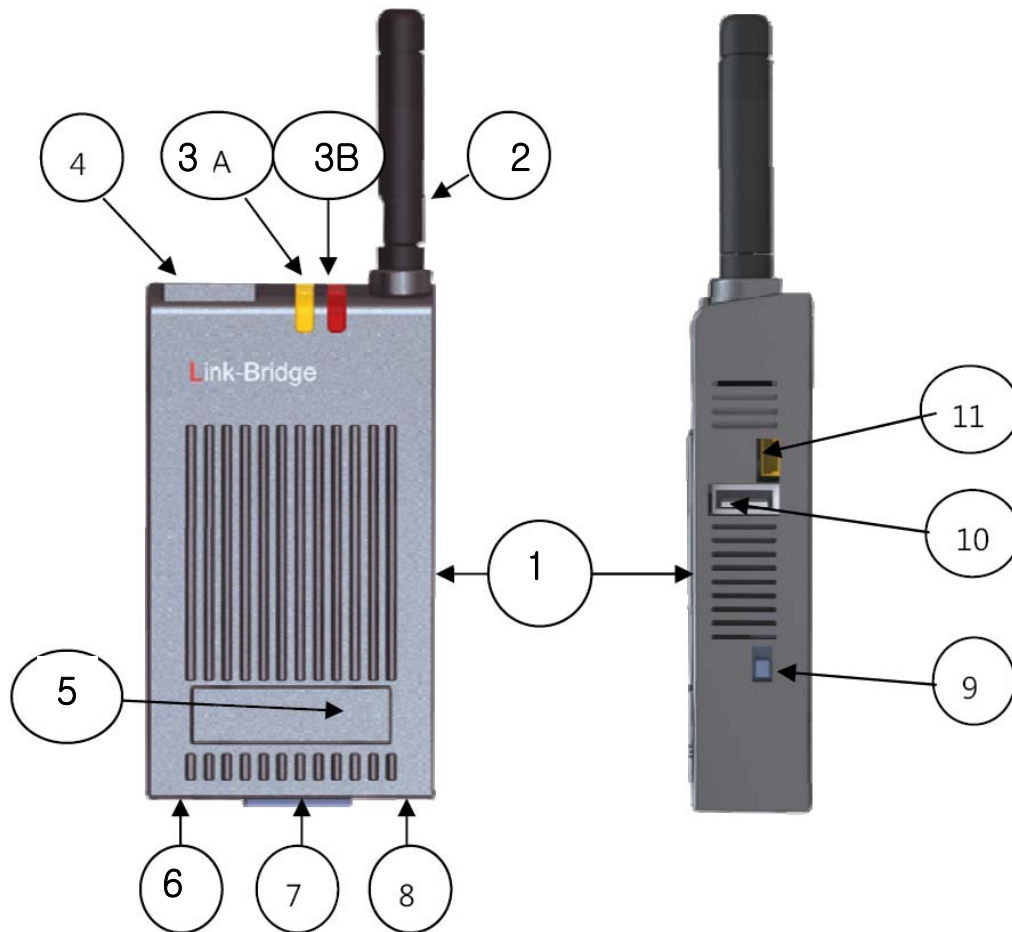
### Structure of Host



Part Name of Host	
1	Host
2	Antenna
3	Connection Display

## 2. Structure


### Structure of Docking Station



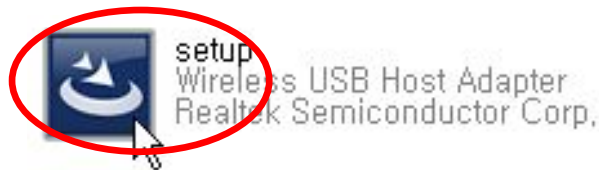
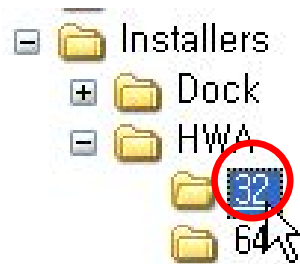
Part Name of Docking Station	
1	Docking Station Body
2	Antenna
3A	Link Display of Internet
3B	Power & Monitor Display
4	RJ45 Jack for Internet
5	DVI Port
6	Audio Jack
7	VGA Port
8	Power Jack
9	Power Switch
10	USB Terminal for Peripheral Device
11	USB Mini Jack for Association

### 3. Specification

#### Specification

	Item		Unit	Spec
	Data Throughput		Mbps	480
	Resolution		Pixel	1920x1080p
	Field Range		m	10
	OS		Mm	Windows7,Vista, XP3
	USB Terminal		EA	1
	Ethernet Jack		EA	1
	Speaker Jack		EA	1
	Speaker		EA	Mono Speaker, 2W
	DVI Jack		EA	1
	VGA Jack		EA	1
	Power Jack		EA	1
	Power Switch		EA	1
	Data Throughput		Mbps	480
	Size	Host	mm	80 x 40 x 15
		Docking		125 x 64 x 26.5

## 4. Installation (Step1. Host Installation)



1. Insert the provided CD into your PC( or Notebook).

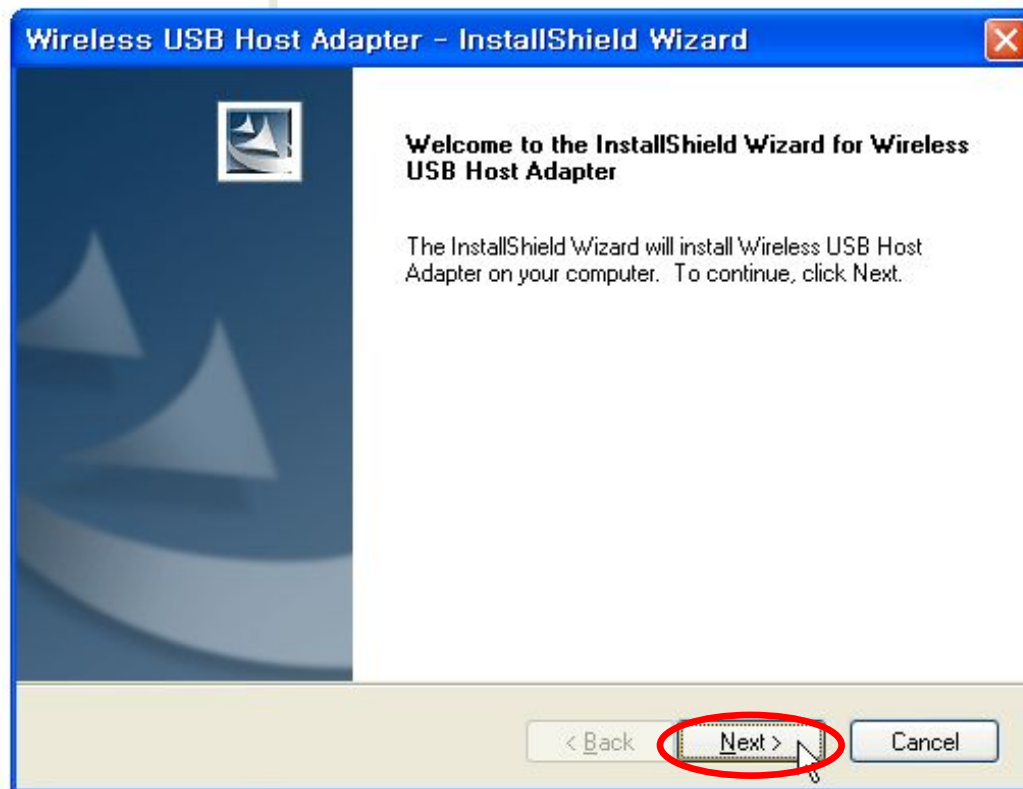
*Caution!!!!*

You have to select 32bit or 64bit which your PC support.

2. Select HWA > 32 > setup as shown in the attached picture.



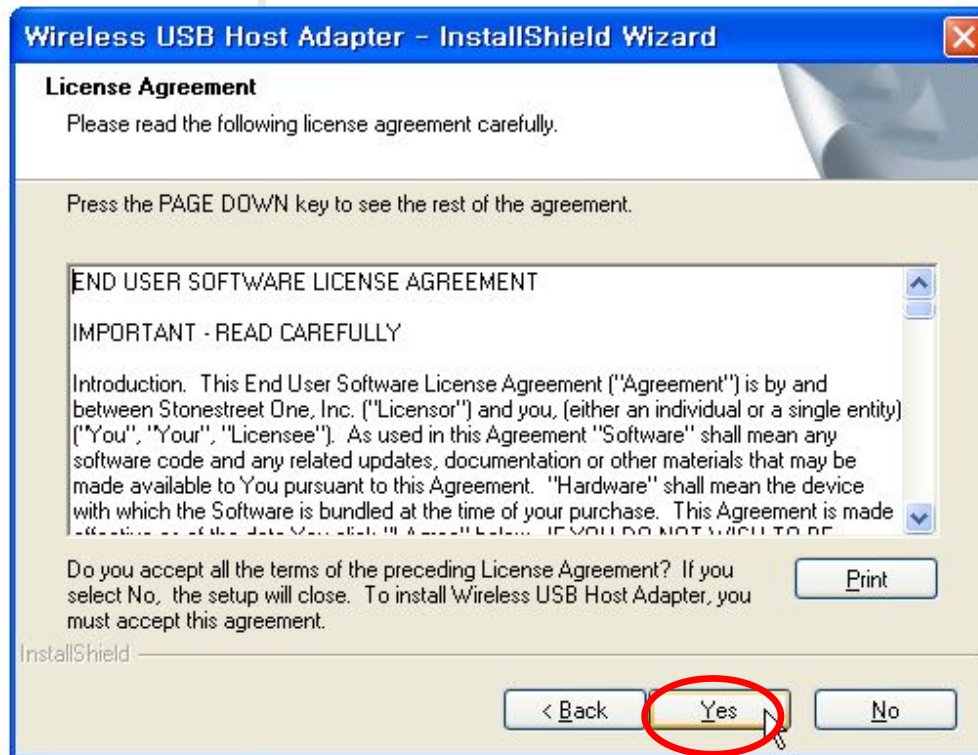
#### 4. Installation (Step1. Host Installation)



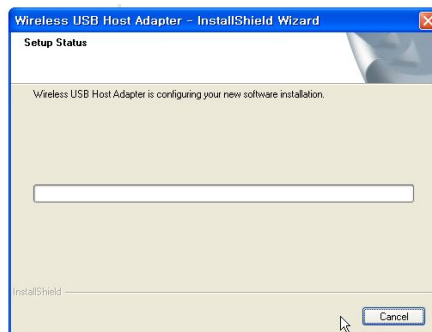
3. Select Next

as shown in the attached picture.

## 4. Installation (Step1. Host Installation)



4. Select Yes  
as shown in the attached picture.





#### 4. Installation (Step1. Host Installation)



5. Select Finish  
as shown in the attached picture.

#### 4. Installation (Step2. Docking Station Installation)



1. Insert the provided CD into your PC (or Notebook).

*Caution!!!!*

You have to select 32bit or 64bit which your PC support

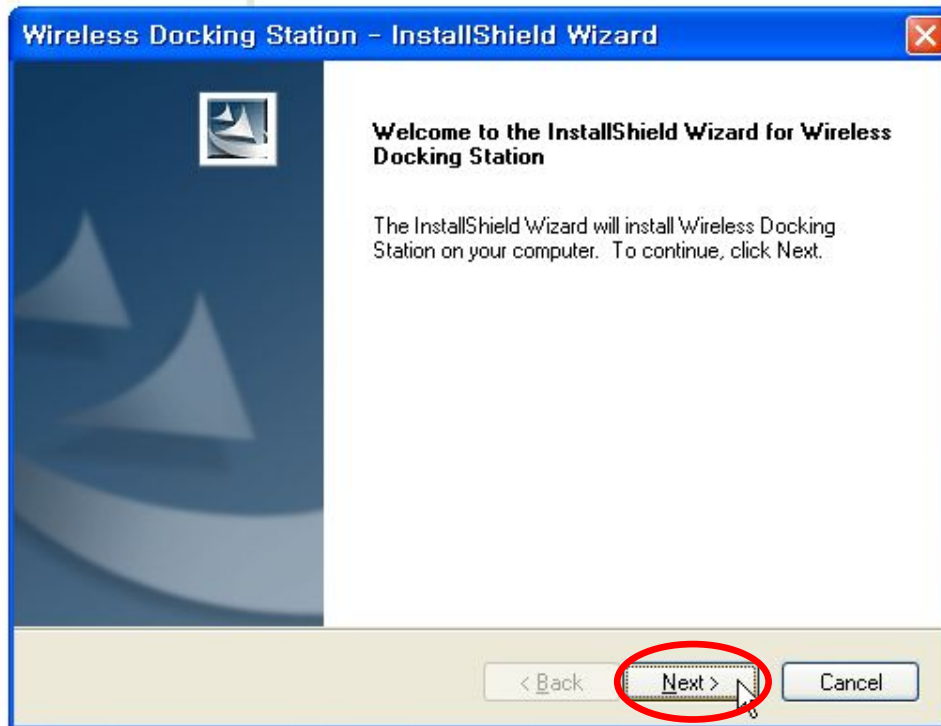


2. Select HWA > 32 > setup

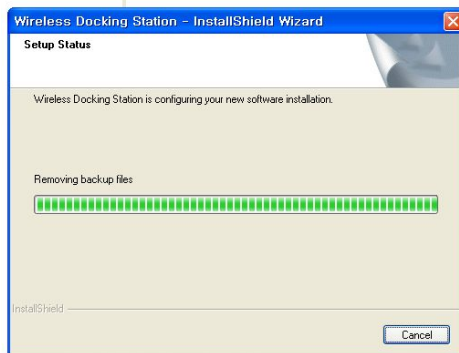
as shown in the attached picture.



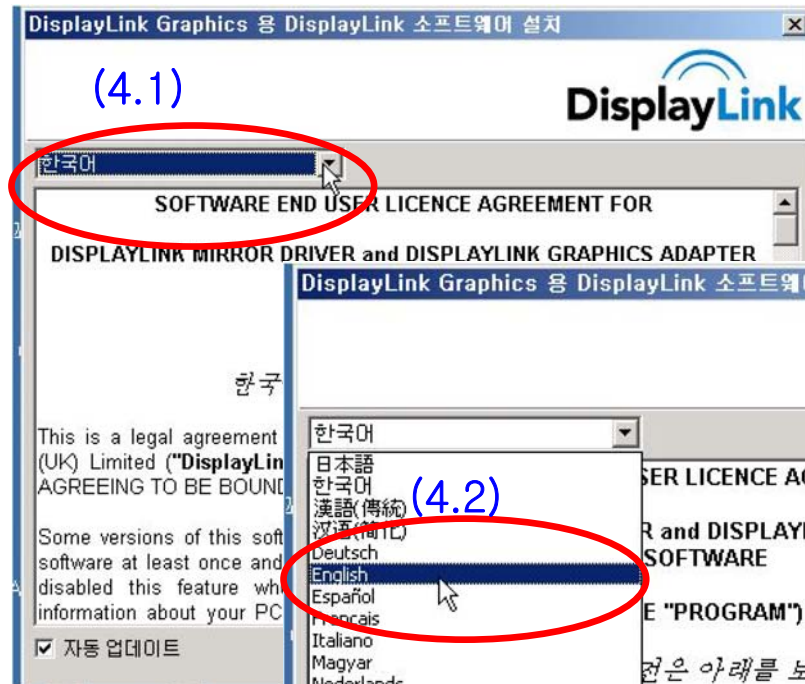
#### 4. Installation (Step2. Docking Station Installation)



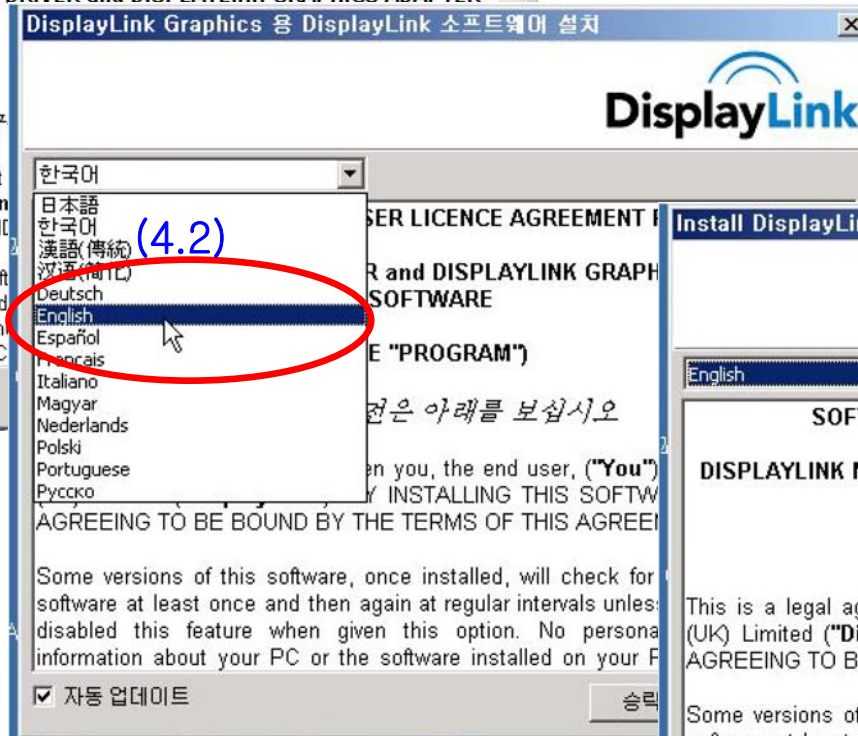
3. Select Next  
as shown in the attached picture.



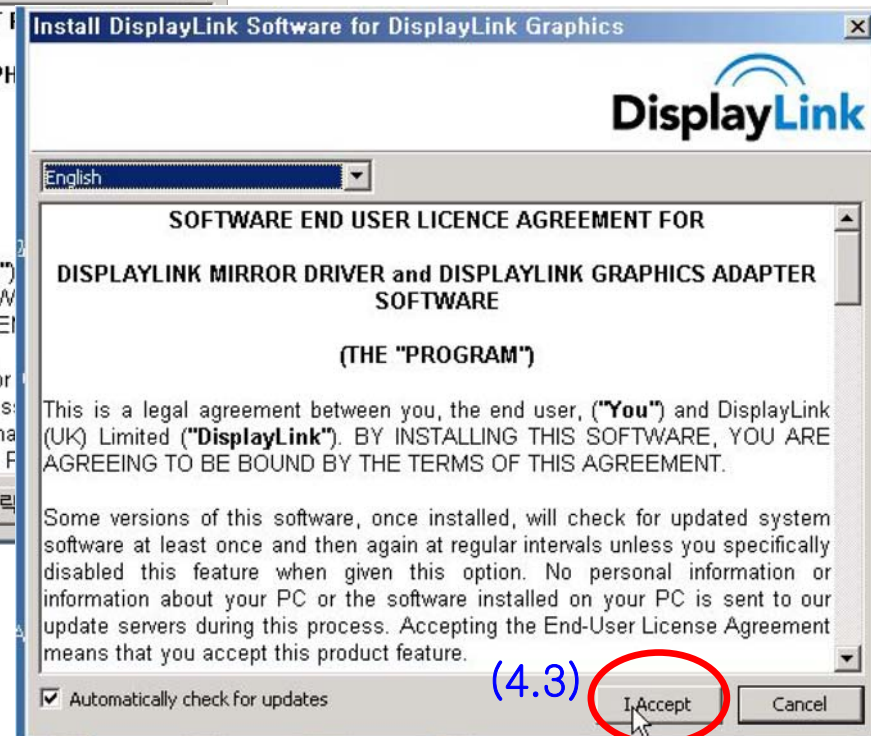
#### 4. Installation (Step2. Docking Station Installation)



4.1 How to Change to English as shown in the attached picture.

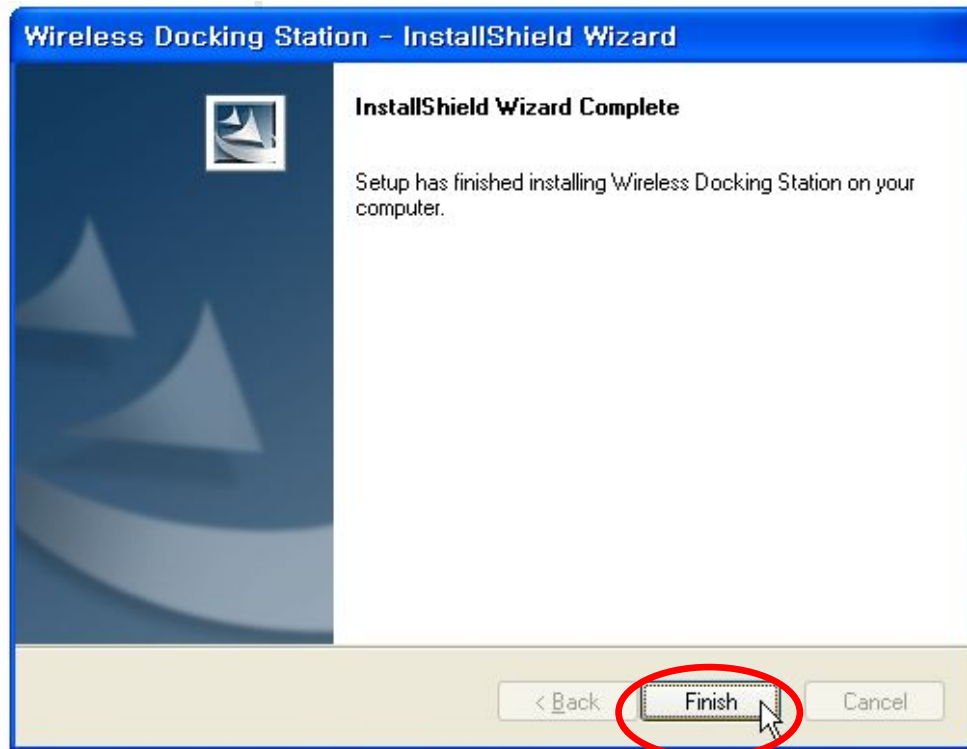


4.2 Select English as shown in the attached picture.



4.3 Accept as shown in the attached picture.

#### 4. Installation (Step2. Docking Station Installation)



5. Select Finish  
as shown in the attached picture.



6 . You have to reboot  
your PC (or Notebook)

#### 4. Installation (Step3. Association)

Both of Wireless UWB Host & UWB Docking Station driver installation completed is necessary before you start to make cable association

1. Get started start by plugging your UWB Host into USB Port on Your PC (or Notebook) and you will find the Wireless USB Manager



2. Please separate UWB Host from PC



#### 4. Installation (Step3. Association)

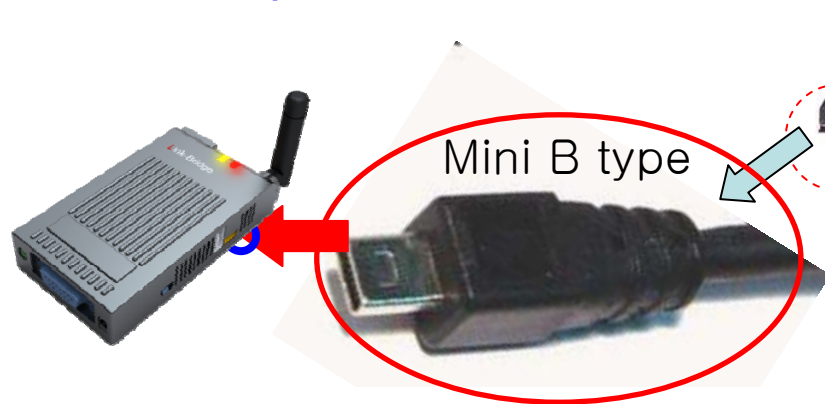
### 3. Power on Docking Station

1) Please plug the DC 5V Adapter into Docking Station.



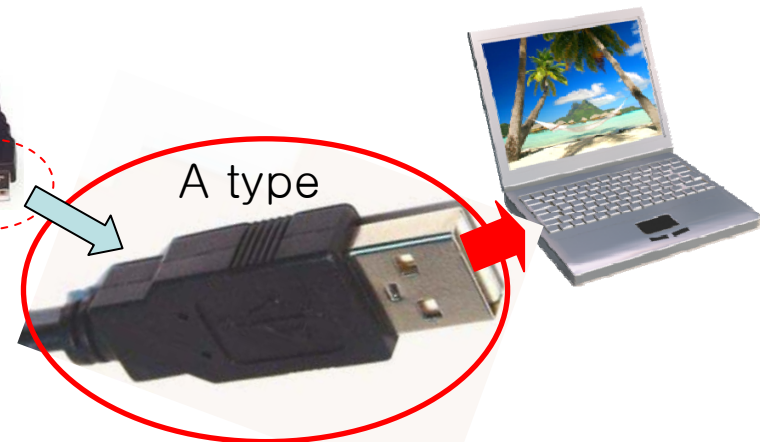
2) Power ON

4. Using a USB Type A to Mini B Cable, connector the Docking Station to your PC( or Notebook)



Connect cable to Mini USB Jack of Docking Station.

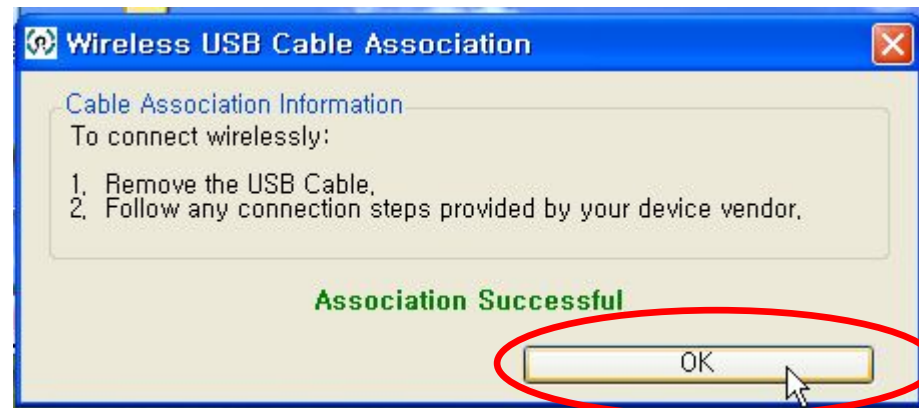
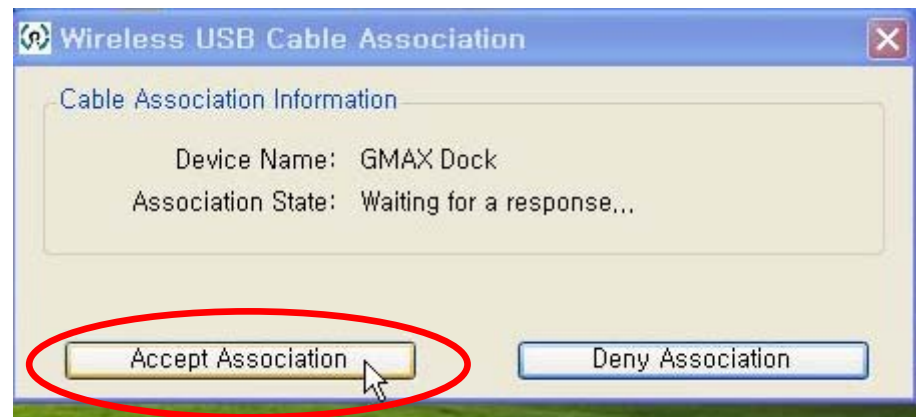
Cable



Connect cable to the PC.

#### 4. Installation (Step3. Association)

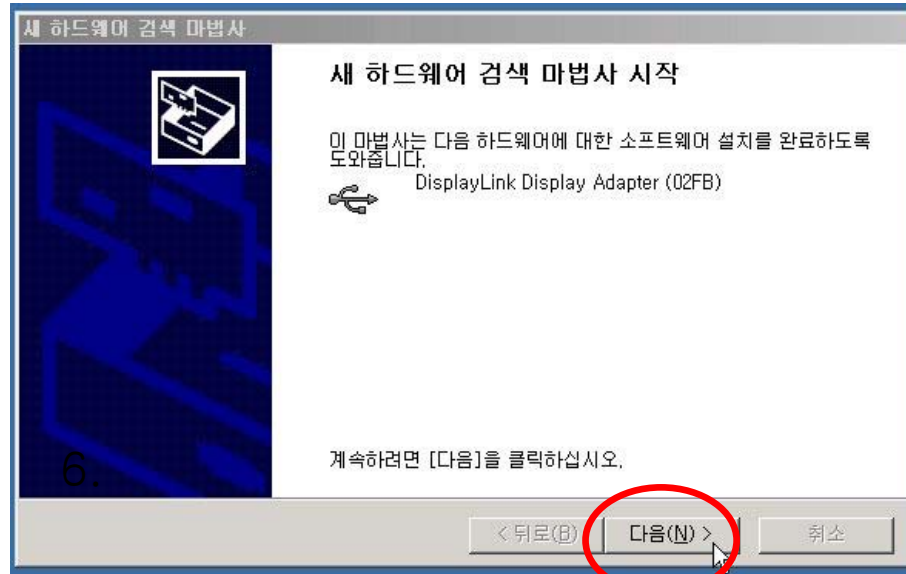
5. When the UWB association screen display , please click on Accept Association and OK for Association successful.



6. Wait a minute please.

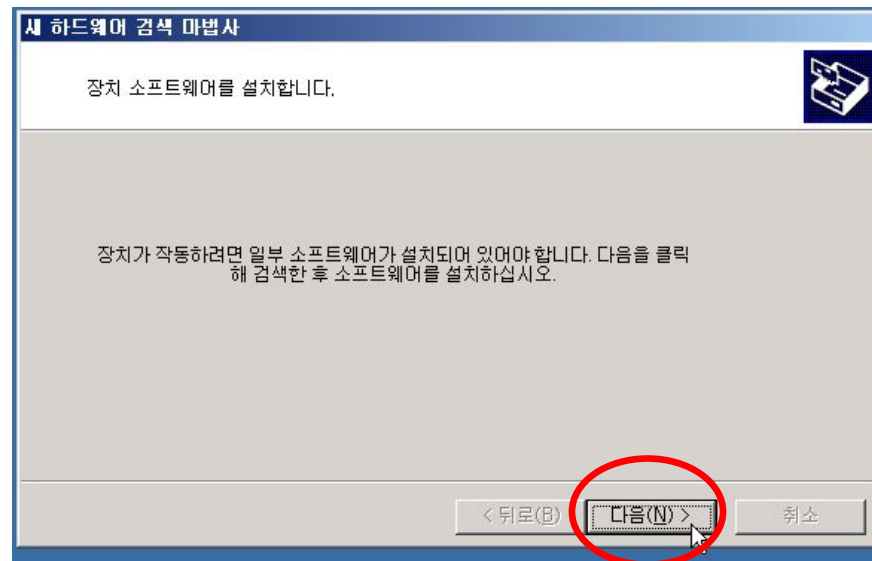


#### 4. Installation (Step3. Association)



7. Select 다음 (Next)

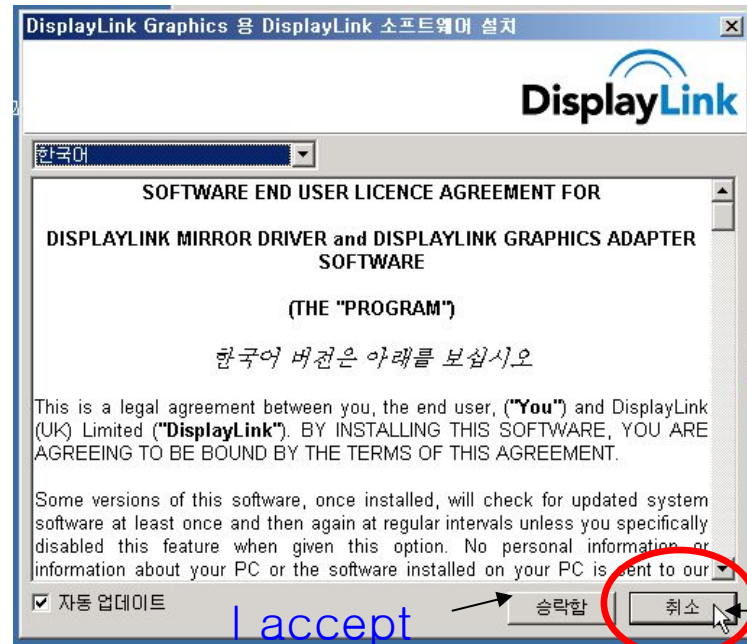
as shown in the attached picture.



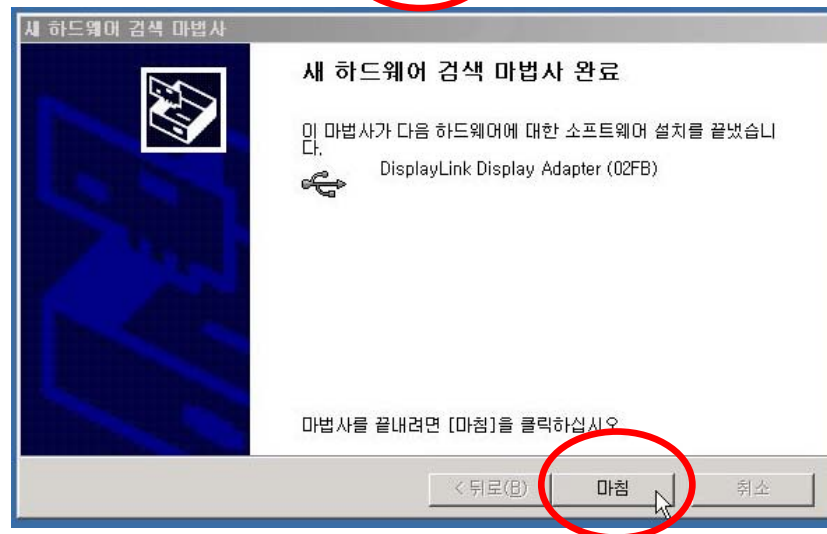
8. Select 다음(Next)

as shown in the attached picture.

#### 4. Installation (Step3. Association)



9. Select 취소 (Cancel)  
as shown in the attached  
picture.



10. Select 마침 (Finish)  
as shown in the attached  
picture.

#### 4. Installation (Step3. Association)

11. Remove the USB cable on your UWB Docking Station.



When the Association is completed, please remove USB cable

## 5. How to use

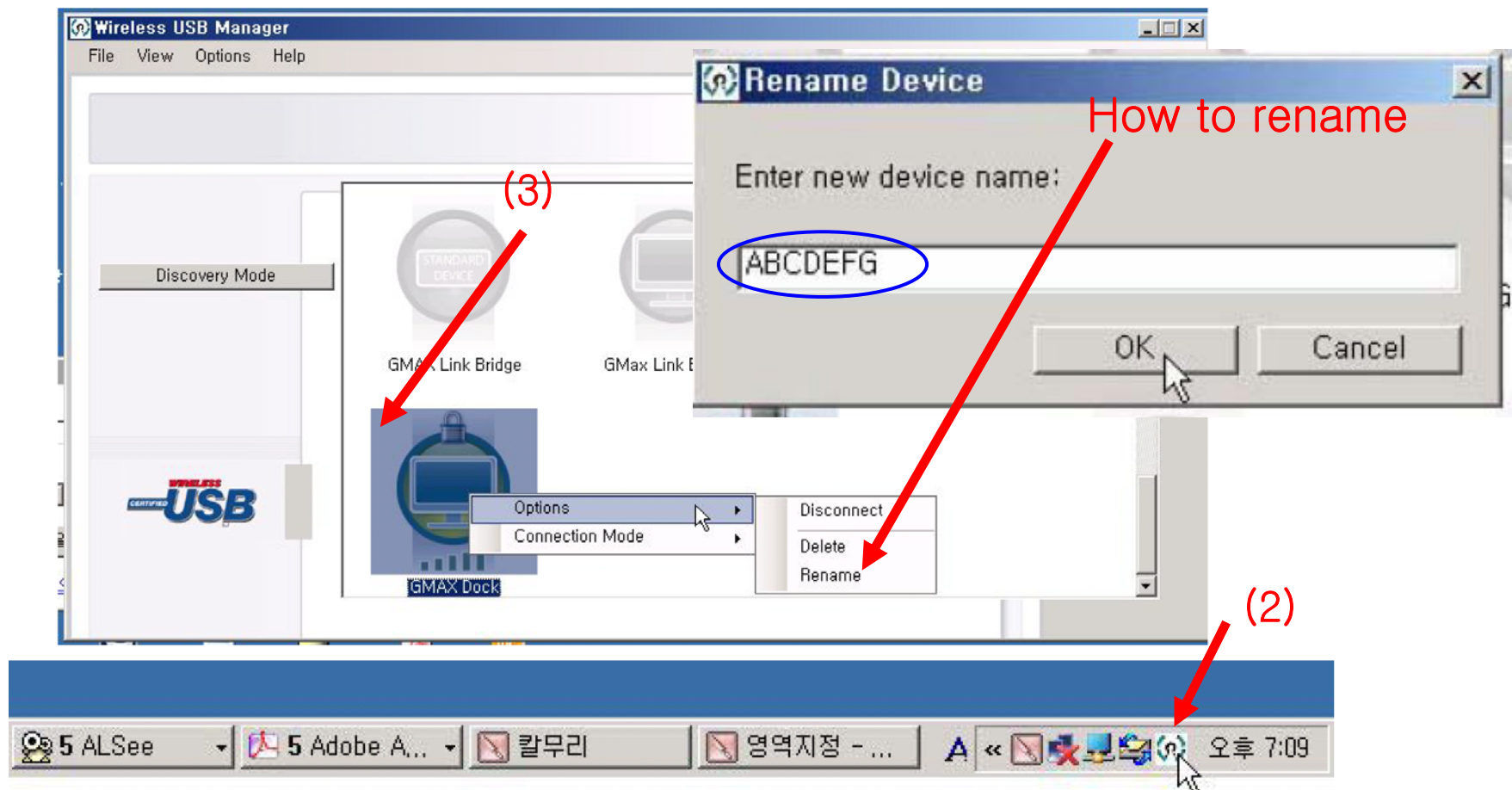
1. Please insert the Host into USB terminal of PC and make connection between Docking Station and Monitor( or PC) with DVI cable as shown in the attached picture.



After a moment, It is possible to see Monitor (or TV) that show the same content of PC when green LED of Docking Station is indicated.

## 5. How to use

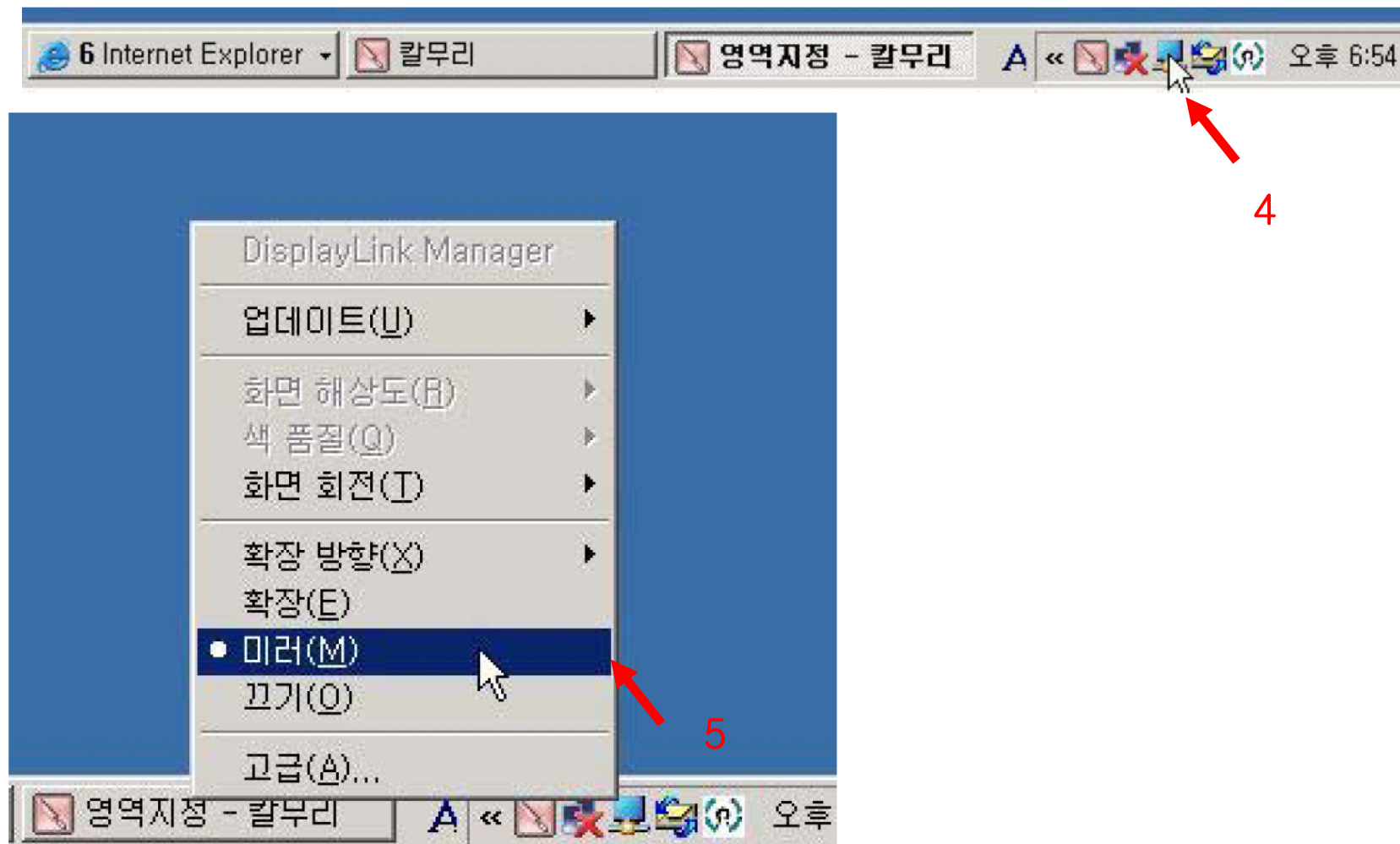
2. Please double click Wireless USB Manager in notification area.
3. The icon in Green represents association successful.



## 5. How to use


4. Please double click Display Mark in notification area.( see below)

5. You had better select M(Mirror mode) as shown in the attached picture





## 6. FCC STATEMENT



This equipment has been tested and found to comply with the limits for a Class B digital device, pursuant to Part 15 of the FCC Rules. These limits are designed to provide reasonable protection against harmful interference in a residential installation. This equipment generates, uses and can radiate radio frequency energy and, if not installed and used in accordance with the instructions, may cause harmful interference to radio communications. However, there is no guarantee that interference will not occur in a particular installation. If this equipment does cause harmful interference to radio or television reception, which can be determined by turning the equipment off and on, the user is encouraged to try to correct the interference by one of the following measures:

- Reorient or relocate the receiving antenna.
- Increase the separation between the equipment and receiver.
- Connect the equipment into an outlet on a circuit different from that to which the receiver is connected.
- Consult the dealer or an experienced radio/TV technician for help.

FCC Caution: Any changes or modifications not expressly approved by the party responsible for compliance could void the user's authority to operate this equipment.

This device complies with Part 15 of the FCC Rules. Operation is subject to the following two conditions: (1) This device may not cause harmful interference, and (2) this device must accept any interference received, including interference that may cause undesired operation.

This device and its antenna(s) must not be co-located or operation in conjunction with any other antenna or transmitter.

A UWB device operating under the provisions of this section shall transmit only when it is sending information to an associated receiver. The UWB intentional radiator shall cease transmission within 10 seconds unless it receives an acknowledgement from the associated receiver that its transmission is being received. An acknowledgement of reception must continue to be received by the UWB intentional radiator at least every 10 seconds or the UWB device must cease transmitting.