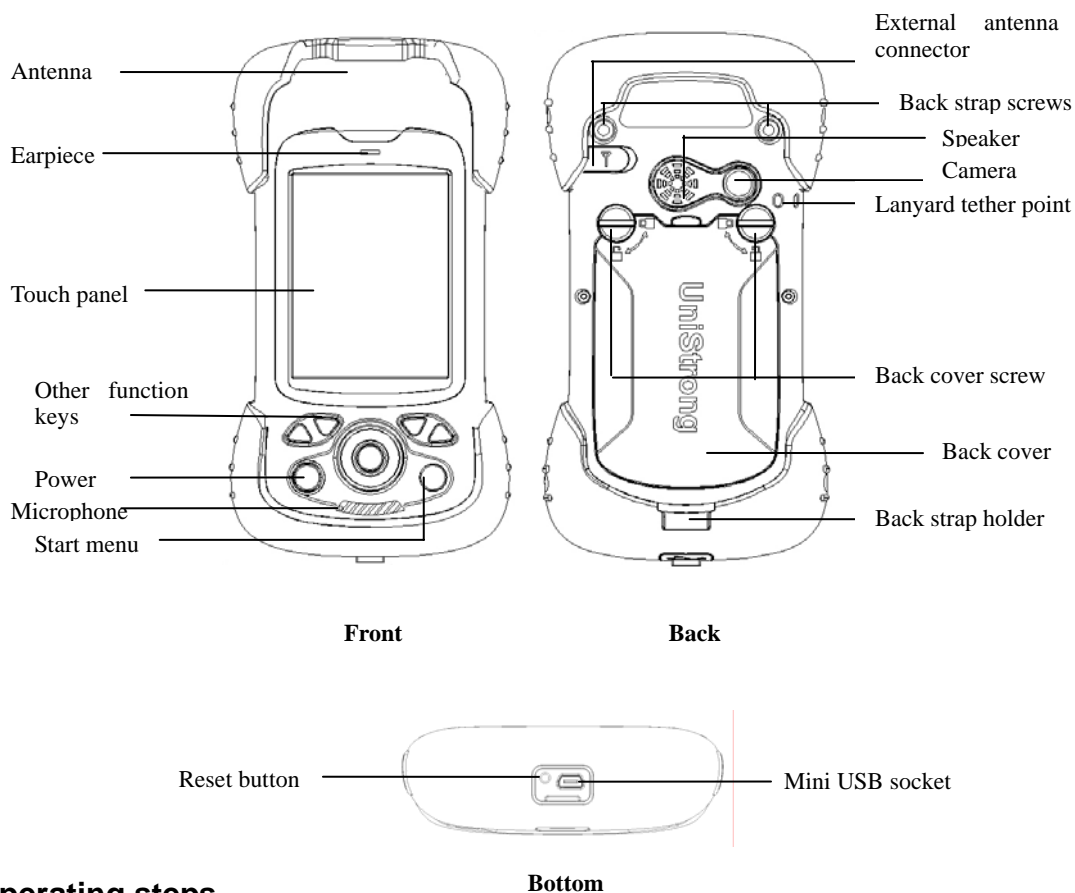


Odin Series Quick Start

1. Appearance



2. Operating steps:

- I. Charging
- II. Fix TF card/SIM card/battery
- III. Turn on the collector
- IV. Connect to PC to install application or data
- V. Collect GIS data with internal GPS and GIS application
- VI. Upload data

• Charging

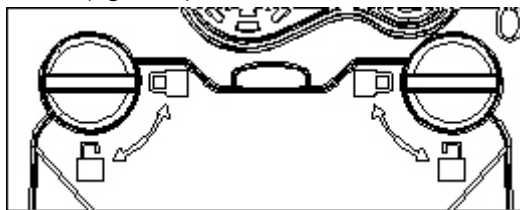
Insert the Li-ion battery into the battery charger to charge.

Remark: mini USB cable can also be used to charge the receiver. When normally charged, there is charging icon in the screen if receiver is off and there is charging icon to the top right corner in the screen if receiver is on.

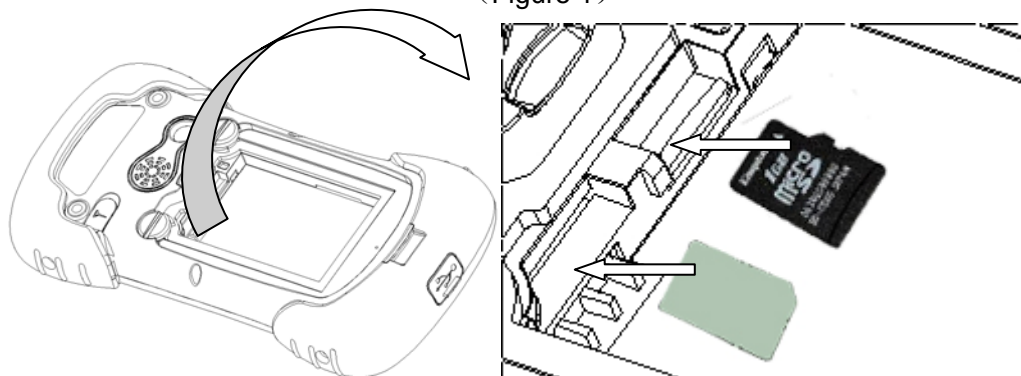
• Fix TF card/SIM card/Battery

- 1、 Turn the back cover screw to the open position according to the instruction on the back cover and take off the back cover (figure 1).
- 2、 Fix the SIM card and TF card according to the instruction in the battery cabin (figure 2).
- 3、 Fix the battery.
- 4、 Fix the back cover and turn the back cover screw to the lock position according to the

instruction on the back cover (figure 1).



(Figure 1)




(Figure 2)

- **Turn on/off collector**

- 1、Make sure there is enough power in battery, or connect receiver to PC with mini USB cable (with battery in).
- 2、Press power button for 3~5 seconds to turn on (until the boot screen appears) / turn off.

Remark: if receiver is down, press the reset button in the bottom of receiver to reset.

- **Connect to PC**

- 1、Make sure Microsoft ActiveSync application has been installed in PC.
- 2、Connect receiver to PC with mini USB cable.
- 3、ActiveSync application connects receiver and PC automatically. There is  icon appears in the tool bar of PC and 'Synchronization Setup Wizard' appears meantime, click 'Cancel'.
- 4、Click 'Browse' to check the files in receiver, then transfer data between PC and receiver.

- **Install Application**

- 1、Make sure Odin is connected with PC via ActiveSync.
- 2、Click install file on PC to start the installation. If the install file is compatible for mobile device, copy the file into Odin and click to start the installation.
- 3、Select installation directory in Odin ('Flash Storage' is suggested), click 'install'.

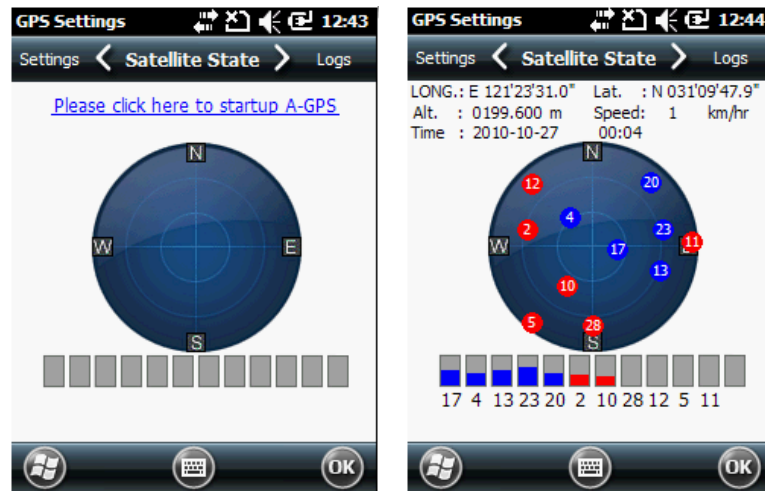
Remark: it's suggested to install the application in 'Flash Storage', save data in TF card.

- **Use GPS**

Option 1

Use the internal GPS settings.

1. Start->Settings->System->GPS Settings->Satellite State
2. Click 'Please click here to startup A-GPS'.
3. Wait until get GPS information.

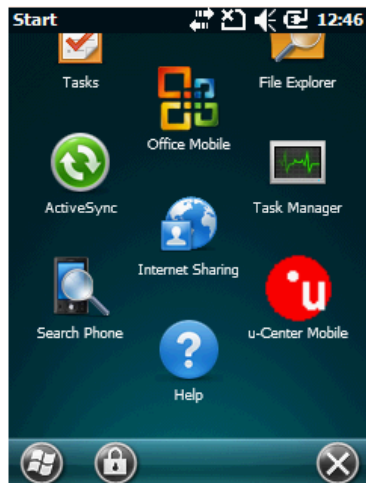


Option 2

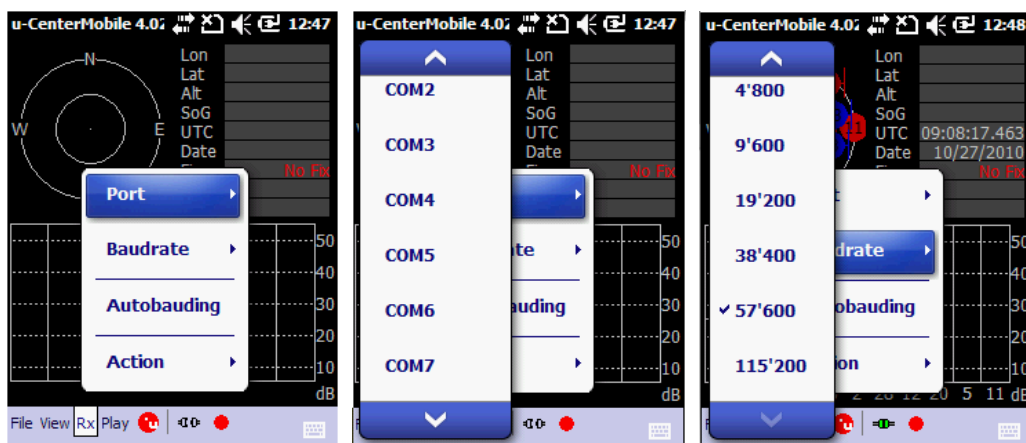
Use user-define application software: Set COM port as COM6 and baud rate as 57600 in application.

Here take 'u-center mobile' application software for example.

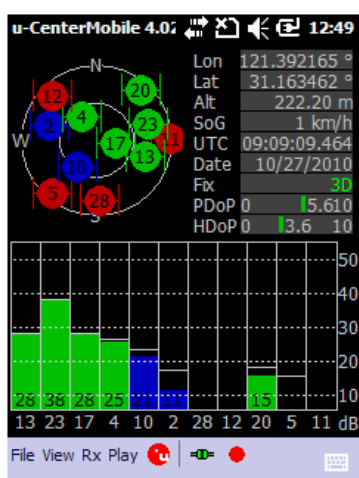
1. Install 'u-center mobile' and run it.



2. Set Port and Baud rate in 'Rx' menu.



3. Wait until get GPS information.




- **Use Camera**

Select 'Start->Picture & Video', select 'Camera' or camera icon to take photos. Click screen and select 'OK' to exit.

- **Wireless Connection (Bluetooth/GPRS/WIFI)**

Bluetooth

1、Select 'Start->Settings->Connections->Wireless management', click the  icon on the right of 'Bluetooth' to activating the Bluetooth device.

2、Select 'Start-> Settings-> Bluetooth', click 'Add new device...', system will search available Bluetooth device. Select the device in refurbished list and click 'Next' in the bottom right corner, input password.

3、Select 'Next', input password in external Bluetooth device and finish the connection.

Remark: The password is used to the connection between Bluetooth devices and can be setup freely, such as '1234'.

GPRS

- 1、 Make sure there's SIM card in receiver.
- 2、 Select 'Start->Settings->Connections->Connections' .
- 3、 Click 'Add a new modem connection' .
- 4、 Input connection name, select 'Cellular Line(GPRS)' , click 'Next' .
- 5、 Input 'cmnet', click 'Next' .
- 6、 Click 'Finish' and add new connection successfully.
- 7、 Click 'Manage existing connections' .
- 8、 Click on the new connection for a while and select 'Connect' .
- 9、 There is GPRS identifier on the signal icon on the top right corner, indicates the successful connection.

WIFI

- 1、 Select 'Start->Settings->Connections->Wi-Fi';
- 2、 Click 'Search for Networks' , select a network that listed. Follow the installation guide to input password and finish the connection.

3. Useful Settings

Screen response

Select 'Start-> Settings-> System-> Screen' , click 'Align Screen' icon and follow the guide to align the screen.

Adjust backlight

Select 'Start-> Settings-> System-> Backlight', adjust backlight status according to the guild.

Auto power off

Select 'Start-> Settings-> System-> Power-> Advanced' , set the power off time in different conditions.

Remove programs

Select 'Start-> Settings-> System-> Remove Programs' , select the program in the list and click 'OK' to remove.

Fall alarm

Select 'Start-> Settings-> System-> Motion Sensor' , select 'Fall Alarm' , check or not the function of sharp warning sound when Odin is dropped. You can also open or close the 'Screen rotation' function in this menu.

Restore Factory Defaults

Select 'Start-> Settings-> System-> Restore Factory Defaults' , restore factory defaults settings according to the guide.

Caution: Restore factory defaults settings, all the data and programs will be lost.

4. Environmental

- Operating temperature: -20°C~+50°C
- Storage temperature: -30°C~+70°C
- Drop: 1.5m drop onto all faces
- Casing: Dustproof and resistant to heavy wind driven rain per IP66 standard
- Humidity: 5% ~ 95% (non-condensing)

Appendix - Product Safety Warnings

Safety and compliance information

Use responsibility – Read all instructions and safety information before use to avoid injury.

Battery safety

Charge battery only in temperature ranging from 32°F to 113°F (0°C to 45°C).

CAUTION: Danger of explosion if battery is incorrectly replaced. Replace only with the same or equivalent type of battery recommended by the manufacturer.

Dispose of used batteries according to battery manufacturer's instructions.

WiFi safety

Turn WiFi off in areas where WiFi use is prohibited or when it may cause interference or danger, such as in airplanes while flying.

Care and maintenance

Odin is an electronic product and should be treated with care, to reduce the risk of fire, electronic shock, or product damage.

- Do not expose this device to rain, moisture, or any type of liquid that corrodes electronic circuits. If your device gets wet, immediately turn the power off. Allow the device to dry completely before using it again.
- Clean the display with a soft cloth, and be careful not to wipe the display with anything abrasive.
- Do not expose your device to extreme heat or cold. For example, do not leave it in the trunk of your car in high heat conditions.
- Do not attempt to open the device other than as instructed in this manual.
- Rough handling can break internal circuitry.
- Do not use harsh chemicals, cleaning solvents, or strong detergents to clean the device.
- Use only the recommended accessories.
- Do not excessive sound pressure from earphones and headphones, which can cause hearing loss.

USB Data Cables

This version supports the USB interface. You can connect your Odin with the PC via the USB&data cable, copying or moving the files amid the Odin and PC, or browsing the images, record files and video files saved in the Odin via the PC.

- 1 Insert the USB data cable connector into the USB interface of the Odin.
- 2 Connect the other terminal of the USB data cable with the USB interface of the PC.

CAUTION

THE CONNECTION TO USB INTERFACES HAS TO BE LIMITED TO

USB2.0 VERSION OR HAIGHER

THE CONNECTION TO SO CALLED POWER USE IS PROHIBITED

For more information, please turn to

UniStrong

www.unistrong.com/English

Email: overseas@unistrong.com

Manual Requirements according 15.19 / RSS-210

NOTICE:

This device complies with Part 15 of the FCC Rules [and with RSS-210 of Industry Canada].

Operation is subject to the following two conditions:

- (1) this device may not cause harmful interference, and*
- (2) this device must accept any interference received, including interference that may cause undesired operation.*

Manual Requirements according 15.21

NOTICE:

Changes or modifications made to this equipment not expressly approved by Beijing UniStrong Science & Technology Co., Ltd may void the FCC authorization to operate this equipment.

Manual Requirements according 15.105

NOTE: *This equipment has been tested and found to comply with the limits for a Class B digital device, pursuant to Part 15 of the FCC Rules. These limits are designed to provide reasonable protection against harmful interference in a residential installation. This equipment generates, uses and can radiate radio frequency energy and, if not installed and used in accordance with the instructions, may cause harmful interference to radio communications. However, there is no guarantee that interference will not occur in a particular installation. If this equipment does cause harmful interference to radio or television reception, which can be determined by turning the equipment off and on, the user is encouraged to try to correct the interference by one or more of the following measures:*

- Reorient or relocate the receiving antenna.*
- Increase the separation between the equipment and receiver.*
- Connect the equipment into an outlet on a circuit different from that to which the receiver is connected.*
- Consult the dealer or an experienced radio/TV technician for help.*

Manual / Label requirements according ICES-003

NOTICE:

This Class [B] digital apparatus complies with Canadian ICES-003.

Cet appareil numérique de la classe [B] est conforme à la norme NMB-003 du Canada.

NOTICE:

This device complies with Industry Canada licence-exempt RSS standard(s). Operation is subject to the following two conditions: (1) this device may not cause interference, and (2) this device must accept any interference, including interference that may cause undesired operation of the device.

[Le présent appareil est conforme aux CNR d'Industrie Canada applicables aux appareils radio exempts de licence. L'exploitation est autorisée aux deux conditions suivantes : (1) l'appareil ne doit pas produire de brouillage, et (2) l'utilisateur de l'appareil doit accepter tout brouillage radioélectrique subi, même si le brouillage est susceptible d'en compromettre le fonctionnement.]

SAR Information:

The SAR limit adopted by USA (FCC) is 1.6 Watts/kilogram (W/kg) averaged over one gram of tissue. Device types (**FCC ID: YYEMG75875075X**) has also been tested against this SAR limit. The highest SAR value reported under this standard during product certification for the body is **1.221 W/kg**. This device was tested for typical body-worn operations with the back of the handset kept 0 cm from the body. To maintain compliance with FCC RF exposure requirements, use accessories that maintain a 0 cm separation distance between the user's body and the back of handset. The use of belt clips, holsters and similar accessories should not contain metallic components in its assembly. The use of accessories that do not satisfy these requirements may not comply with FCC RF exposure requirements, and should be avoided.