



OWNER'S MANUAL

PowerSync Cart for iPad
H3635LL/A



Welcome ...

Congratulations on the purchase of your new PowerSync Cart for iPad

Use this Owner's Manual to help you use of your Bretford PowerSync Cart. Additional helpful information can be found on:

bretford.com/apple

General Use

- This cart is designed to allow you to easily store, secure, recharge, sync and transport up to 30 iPad devices and their host MacBook between classrooms.
- Please read this Owner's Manual carefully. It contains important advice concerning the use and safety of your Bretford PowerSync Cart.
- Keep this Owner's Manual in a safe place and pass it on to any subsequent user.
- This cart must only be used for its intended purpose in accordance with these operating instructions.



Peace of mind, knowing that **the entire cart is UL Listed** - not just the electrical. So your students - your real technology investment - are safe and secure.



BRETFORD

11000 Seymour Avenue Franklin Park, IL 60131 USA 800 521 9614

bretford.com/apple

Part # 031-XXXX
JAF 12.22.10

Assembly Instructions



Unleash the Power Cord

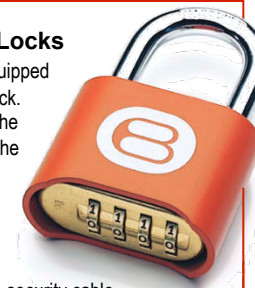
The 9-foot Power Cord is wound around the built-in cord winder on the right side of the cart. To power the cart, simply unwind the Power Cord and plug into a standard 15 amp circuit outlet that is dedicated to the use of this cart. Proper use of the cart is predicated on its being the only appliance on the circuit.



Always Turn Off the Power to the Cart before Plugging In Or Out!

Setting the Combination Locks

Your new PowerSync Cart comes equipped with a re-settable Combination Padlock. The lock starts with 0-0-0-0. Follow the directions with the lock for changing the combination. Remember to depress the shackle before un-engaging it from the lock.



Dock & Lock

Your new cart comes equipped with a security cable, wall bracket & combination lock for securing the cart to the wall. Anchors and directions included in Plastic Accessory Box.

Using PowerSync Cart for iPad Devices

The PowerSync Cart enables you to take music, videos, podcasts, photos and other content files in your iTunes library on your Mac and sync your selected content across 30 iPad devices at a time.

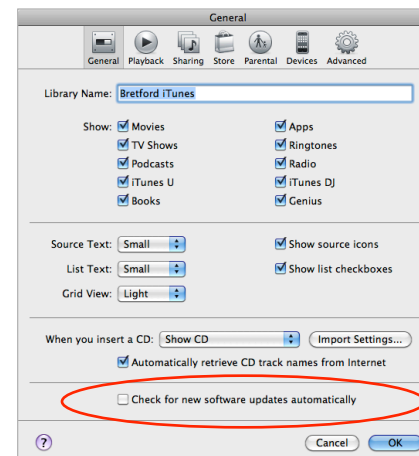


Getting Started ...

Step 1

Configure iTunes for use with PowerSync Cart

By default, iTunes will automatically check for new software updates, including available updates for iTunes & any attached iPads. This feature, however, can often interfere with syncing multiple iPads. To prevent iTunes from automatically checking for updates, Choose **"Preferences..."** from the iTunes menu, and on the **"General"** pane, deselect **"Check for new software updates automatically"**.



Step 2

Configure each iPad Device for use with PowerSync Cart

For optimal performance, you must set-up your iPad devices using the configuration on back of this User's Guide.

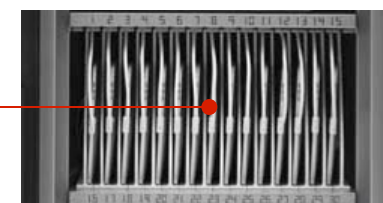
ATTENTION:



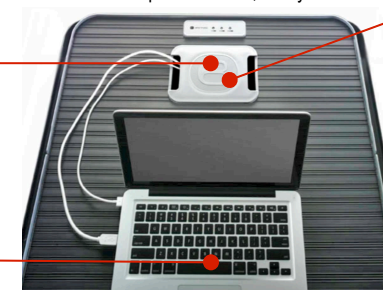
Step 3

Sync iPad devices using the PowerSync Cart

1. Once you have created the content & organized your playlists within iTunes, and set-up each individual iPad device per the instructions on the back of this User's Guide, please start with the following configuration:
 - Each iPad Device is connected inside the cart
 - Mac is "ON" with no applications running
 - PowerSync Cart is plugged into wall and Switch is in "OFF" position.
2. Connect the USB Cable to the port inside the top grommet of the cart to your Mac.
Note: USB 2.0 port on your Mac is required.
3. Turn main Power Switch on back of cart to "ON" position.
4. Launch iTunes & wait until your Mac shows each iPad.
Note: This may take a few moments to complete.
Each iPad device will automatically appear in iTunes & begin syncing. The spinning wheel to the right of each iPad device indicates that syncing is in progress. Sync is complete when spinning wheel disappears.
5. Once the Sync Process is complete, eject each iPad device or simply close iTunes to eject all at once.



Each laser-numbered slot comes pre-wired with a 30-pin connector, ready to use



Top of the cart with Grommet housing outlets for the Mac Power Cord and USB Cable



Lifting off the Grommet Cover reveals a power outlet for the MacBook and the outlet for the USB Cable



6. Unplug the USB Cable from your Mac.
Then the iPad devices will charge. (Step 4 on back)

NOTE: iPad devices will not charge and sync at the same time!

POWERSYNC CART FOR iPad

Model # H3635LL/A

Technical Specifications:

Capacity

- Holds and charges and syncs up to 30 Apple iPad devices

Size & Weight

- Overall: 33"W x 24"D x 37"H
- Compartments: 1"W x 9.5"H x 12"D
- Top Interior Shelf: 17.5"W x 13"D
- Carton Pack: 48"W x 32"D x 42"H
- Ship Weight: 200 lbs.
- Actual Product Weight: 168 lbs.
- Ships by truck in one carton pack

Assembly

- Ships already assembled in one pack (no assembly required)

WARRANTY

Bretford Furniture

Twelve (12) years from date of shipment

Electrical Assemblies/Components
One (1) year from date of shipment

Bretford engineers and manufactures its products to provide dependable operation. Therefore, Bretford Manufacturing, Inc. warrants that all products it manufactures are at date of shipment free from defects in material or workmanship. Any product which under normal use fails to function within the time periods specified below and found defective in material or workmanship by the Company's inspection will be repaired or replaced without charge to the buyer or, at the election of Bretford Manufacturing, Inc., a credit will be allowed up to the invoice purchase price of the product.

This warranty is inapplicable where, in the judgment of Bretford Manufacturing, Inc., the defect is attributable to normal wear, misapplication, abnormal use, misuse, modification or damage after shipment, including damage caused by the buyers failure to properly maintain, or other similar cause.

THIS WARRANTY IS EXPRESSLY IN LIEU OF ANY OTHER EXPRESSED OR IMPLIED WARRANTIES, INCLUDING ANY ORDINARY OR PARTICULAR PURPOSE. THERE ARE NO WARRANTIES WHICH EXTEND BEYOND THE DESCRIPTION ON THE FACE HEREOF.



Step 4

Store & Charge iPad devices using the PowerSync Cart ... next page



ELECTRICAL

- **Avoid sparks. Avoid arcing. Always turn OFF the power to the cart before plugging IN or OUT!**
- **Be sure each device is turned OFF before plugging into the cart.**
- For Safety Purposes, make sure all electrical components do not exceed the the maximum load rating of 12 amps.
- Risk of electrical shock. Do not plug the power cord into another extension cord or relocatable power tap.
- The Power Module inside the cart are only for charging & syncing Apple iPad devices, only.
- Do not unplug this product from the outlet when your hands are wet.
- Do not move the cart by pulling the power cord.
- Do not plug the unit in if the switch, receptacle(s) or power cord has been damaged.
- Contact Bretford or a qualified electrician before attempting to make any type of electrical repair or parts replacement.
- Before moving this cart from one room to the next, wrap the power cord around the cord winder located on the side of the cart.



CAUTION

- Ventilation is critical for PowerSync carts to operate correctly, providing the appropriate airflow so that heat-buildup is minimized during the battery-charging / syncing process.
- Do Not block the ventilation holes on the cart. Proper air flow is required for safe operation of equipment.
- Cart with iPad devices should be keep in a room with a maximum temperature not to exceed 104° F or 40° C.
- Maximum weight of accessories on top of cabinet is 25 pounds. Do not block ventilation holes when charging batteries.
- Avoid loading equipment in the cart in a uneven fashion. Uneven weight distribution could cause a hazardous condition.
- This cart is not designed to be operated by a child or student. Adult operation and supervision is recommended at all times.
- Move cart slowly.
- No TV/Monitor to be used on top of cart.
- Although this cart is designed to support the transport of equipment within a school campus, it is not designed for outdoor use.
- Liquids should not be stored in, set on or placed inside this unit.
- Do not pull cart. Push the cart using the ergonomic handles.
- Engage locking casters when cart is not in transit.
- Use extra caution on ramps and thresholds.

This device complies with Part 15 of the FCC Rules.

Operation is subject to the following two conditions:

- 1 This device may not cause harmful interference.
- 2 This device must accept any interference received, including interference that may cause undesired operation.

Changes or modifications not expressly approved by the party responsible for compliance could void the user's authority to operate the equipment.

NOTE: This equipment has been tested and found to comply with the limits for a Class B digital device, pursuant to Part 15 of the FCC Rules. These limits are designed to provide reasonable protection against harmful interference in a residential installation. This equipment generates, uses and can radiate radio frequency energy and, if not installed and used in accordance with the instructions, may cause harmful interference to radio communications. However, there is no guarantee that interference will not occur in a particular installation. If this equipment does cause harmful interference to radio or television reception, which can be determined by turning the equipment off and on, the user is encouraged to try to correct the interference by one or more of the following measures:

- Reorient or relocate the receiving antenna.
- Increase the separation between the equipment and receiver.
- Connect the equipment into an outlet on a circuit different from that to which the receiver is connected.
- Consult the dealer or an experienced radio/TV technician for help.

Step 4

Store & Charge iPad devices using the PowerSync Cart

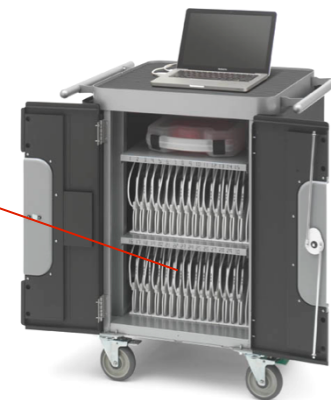
1. Insert each iPad device into a slot and attach the 30-pin dock connector.

NOTE: the orange Bretford logo should face up on the same side as iPad device screen.

2. Plug in Power Cord from the right side of the cart.
3. Turn main Power Switch on back of cart to "ON" position.

NOTE: PowerSync Cart will charge up to 30 iPad devices

NOTE: For best results with new iPad devices, charge for about 4 hours or until the iPad device displays a charged battery.



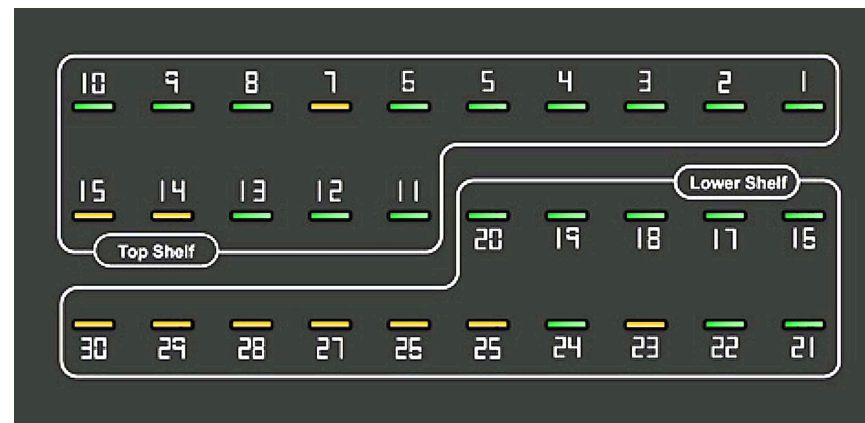
NOTE: iPad devices will not charge and sync at the same time!

LED Charging Indicator Lights



LED Lights on TOP of Cart

3 lights - 1 for each section of 10 iPads - glow amber when charging, turn green when charged



LED Lights on BACK of Cart

1 light for each iPad, shown in sequence per the layout in the cart for easy identification. Amber charging. Green charged.

Configuring an iPad device for use with PowerSync Cart

Please follow these instructions for **each iPad device** used with your PowerSync Cart:

1. Connect each iPad, one at a time, to the Mac you will be using with the PowerSync Cart.
2. If iTunes does not open automatically, **open iTunes & select your iPad device.**
3. If prompted, complete the naming and registration process.
4. Select the Summary tab for your iPad device.
5. In the **Options section:**
 - Enable "Open iTunes when this iPad is attached" (This not only activates iTunes, but begins the syncing process.)
 - Enable "Sync only checked songs & videos" (This allows for greater control of synced media.)
 - Disable "Manually manage music & videos" (Enabling this will require that you manually drag media to this particular iPad.)
4. In the remaining tabs, select the media and playlists you wish to sync with this iPad device.
5. Click the Sync or Apply button.
(The Sync button changes to Apply & Cancel buttons when you make a change to the sync settings.)

Repeat these steps with each iPad device in your collection



POWERSYNC CART FOR iPad

H3635LL/A

Compact Design

Although this cart can store & power up to 30 iPad devices, the exclusive quiet-glide casters and compact size make it very easy to move around

LED Lights

on the top and back of the cart let you know what is going on inside the cart

Auxiliary Outlet for Host computer inside the top grommet

Directional Locking Casters can be locked as a rigid caster for easy rolling down the hallway, unlocked to swivel for easily getting into tight spaces

Laser Numbered Slots help identify the devices & assist in asset management

30-pin Connector Cables Pre-Installed hang directly in the slot & minimize cable clutter

Storage Tub Inside for extra cables & connectors

Ventilation Channels allow maximum air flow in the cart

One Power Cord Exits the cart & plugs into the wall outlet

Security Front doors 3-point locking system with programmable combination padlock

12 Year Warranty on the Cabinet

1 Year Warranty on Electrical

Ships 100% Assembled



BRETFORD

11000 Seymour Avenue Franklin Park, IL 60131 USA 800 521 9614

bretford.com/apple