

System Check_Head_750MHz

Communication System: ; Frequency: 750.0

Medium: HSL_750_230313. Medium parameters used: $f = 750.0$ MHz; $\sigma = 0.885$ S/m; $\epsilon_r = 40.6$

Ambient Temperature: 23.5°C; Liquid Temperature: 22.5°C

DASY6 Configuration:

- Probe: ES3DV3 - SN3184; ConvF(6.77, 6.77, 6.77); Calibrated: 2022-09-26
- Sensor-Surface: 3.0 mm
- Electronics: DAE4 Sn376; Calibrated: 2022-10-19
- Phantom: Twin-SAM V4.0 (30deg probe tilt); Serial: 1488; Section: Flat
- Measurement Software: cDASY6 V6.6.0.13926
- UID: CW, 0--
- MAIA: Area Scan: N/A; Zoom Scan: N/A

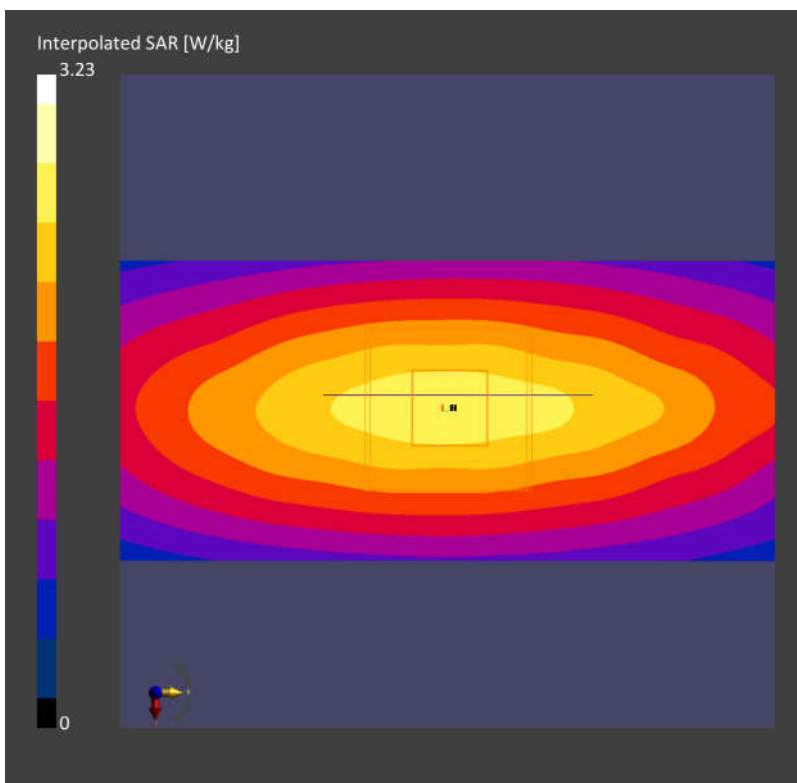
Area Scan (40.0 mm x 90.0 mm): Measurement Grid: 10.0 mm x 15.0 mm

SAR (1g) = 2.21 W/kg; SAR (10g) = 1.45 W/kg;

Zoom Scan (32.0 mm x 32.0 mm x 30.0 mm): Measurement Grid: 6.0 mm x 6.0 mm x 1.5 mm

Power Drift = -0.03 dB

SAR (1g) = 2.18 W/kg; SAR (10g) = 1.42 W/kg;



System Check_Head_835MHz

Communication System: ; Frequency: 835.0

Medium: HSL_850_230313. Medium parameters used: $f = 835.0$ MHz; $\sigma = 0.935$ S/m; $\epsilon_r = 42.7$

Ambient Temperature: 23.5°C; Liquid Temperature: 22.5°C

DASY6 Configuration:

- Probe: ES3DV3 - SN3184; ConvF(6.58, 6.58, 6.58); Calibrated: 2022-09-26
- Sensor-Surface: 3.0 mm
- Electronics: DAE4 Sn376; Calibrated: 2022-10-19
- Phantom: Twin-SAM V4.0 (30deg probe tilt); Serial: 1488; Section: Flat
- Measurement Software: cDASY6 V6.6.0.13926
- UID: CW, 0--
- MAIA: Area Scan: N/A; Zoom Scan: N/A

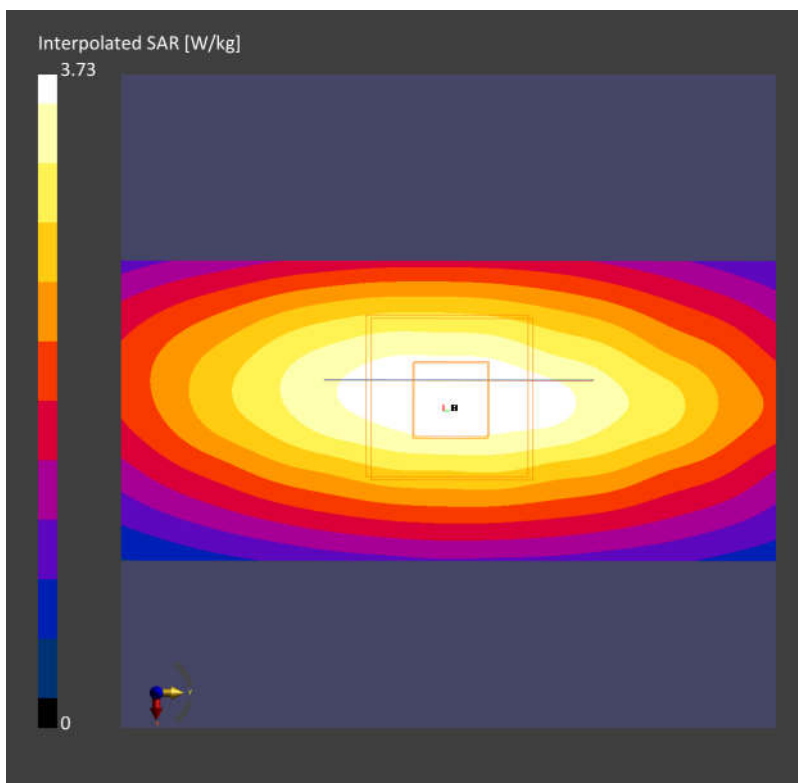
Area Scan (40.0 mm x 90.0 mm): Measurement Grid: 10.0 mm x 15.0 mm

SAR (1g) = 2.47 W/kg; SAR (10g) = 1.61 W/kg;

Zoom Scan (32.0 mm x 32.0 mm x 30.0 mm): Measurement Grid: 6.0 mm x 6.0 mm x 1.5 mm

Power Drift = -0.07 dB

SAR (1g) = 2.51 W/kg; SAR (10g) = 1.63 W/kg;



System Check_Head_1900MHz

Communication System: ; Frequency: 1900.0

Medium: HSL_1900_230313. Medium parameters used: $f= 1900.0$ MHz; $\sigma= 1.44$ S/m; $\epsilon_r = 41.1$

Ambient Temperature: 23.5°C; Liquid Temperature: 22.5°C

DASY6 Configuration:

- Probe: ES3DV3 - SN3184; ConvF(5.23, 5.23, 5.23); Calibrated: 2022-09-26
- Sensor-Surface: 3.0 mm
- Electronics: DAE4 Sn376; Calibrated: 2022-10-19
- Phantom: Twin-SAM V4.0 (30deg probe tilt); Serial: 1488; Section: Flat
- Measurement Software: cDASY6 V6.6.0.13926
- UID: CW, 0--
- MAIA: Area Scan: N/A; Zoom Scan: N/A

Area Scan (40.0 mm x 90.0 mm): Measurement Grid: 10.0 mm x 15.0 mm

SAR (1g) = 10.33 W/kg; SAR (10g) = 5.28 W/kg;

Zoom Scan (32.0 mm x 32.0 mm x 30.0 mm): Measurement Grid: 6.0 mm x 6.0 mm x 1.5 mm

Power Drift = -0.05 dB

SAR (1g) = 10.43 W/kg; SAR (10g) = 5.48 W/kg;

