

1: Antenna model: PCB antenna

2: Antenna type: PCB sinking board antenna

3: Gain: 0.5dBi

4: The antenna size is shown in Figure

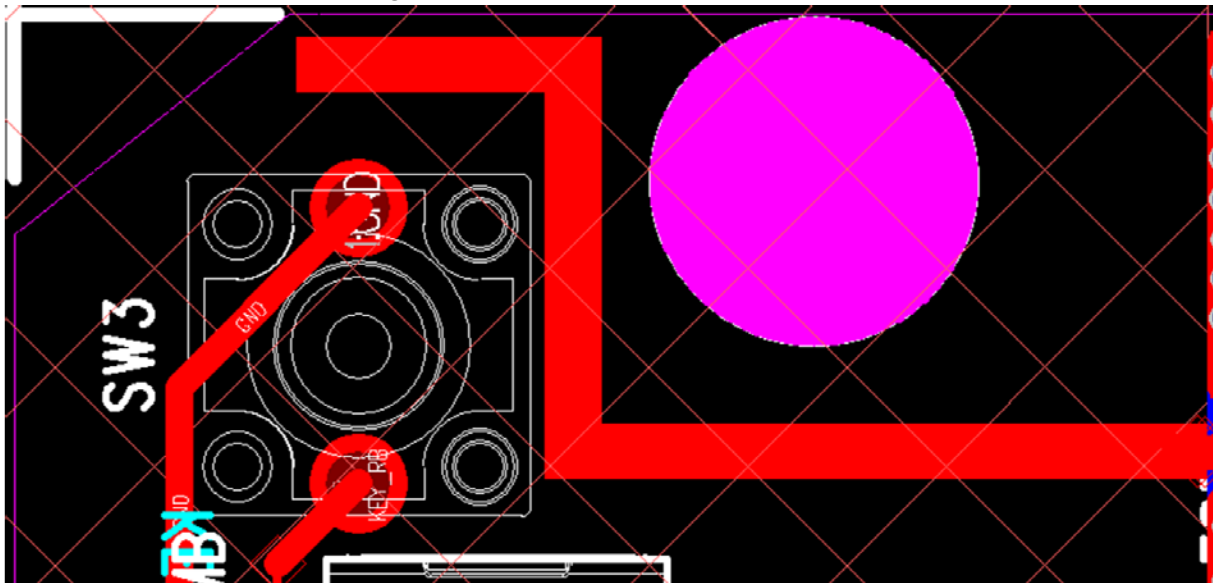


Figure 1

5. The antenna performance is shown in Figure 2, with a working frequency range covering the entire 2.4G ISM frequency band.



Figure 2

6 : The 2D and 3D gains are as follows, reaching around 0.5dB:

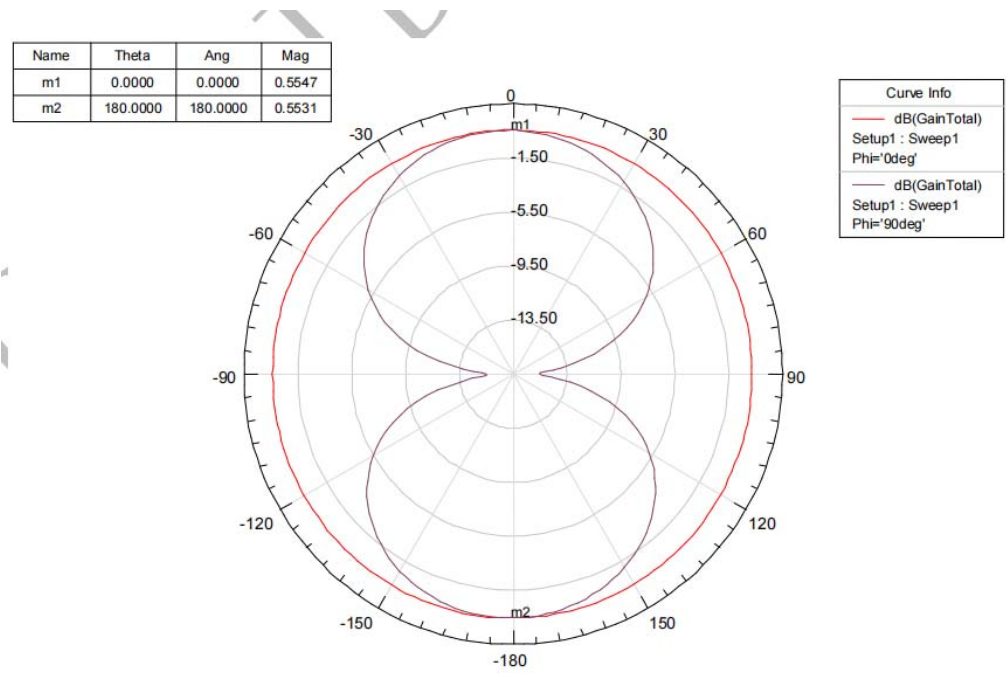


Figure 3

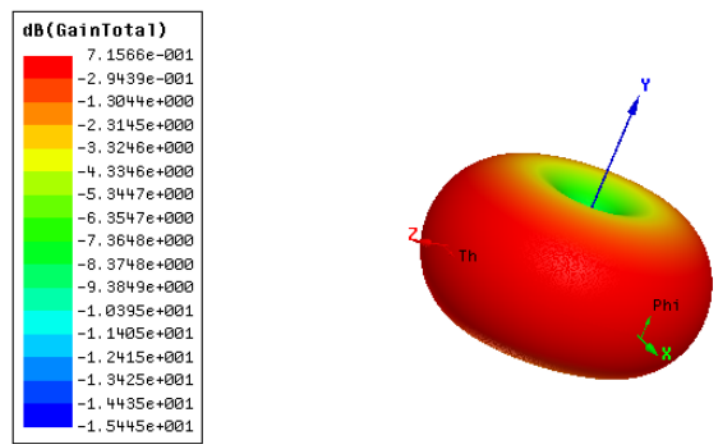
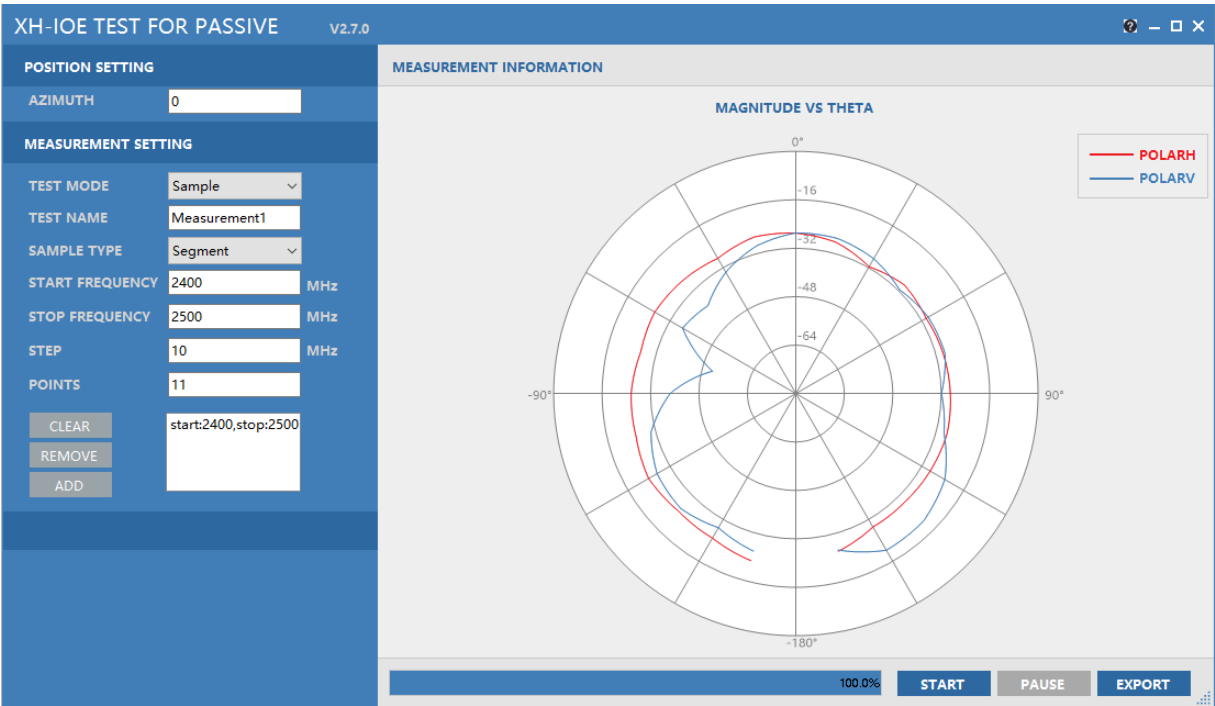


Figure 4: Antenna Gain

7 : Test laboratory name and address

Laboratory	Shenzhen Yingjiachuang Electronic Technology Co., LTD
Address	No.11, Youma Gang Road, Guangming District, Shenzhen, Guangdong, China

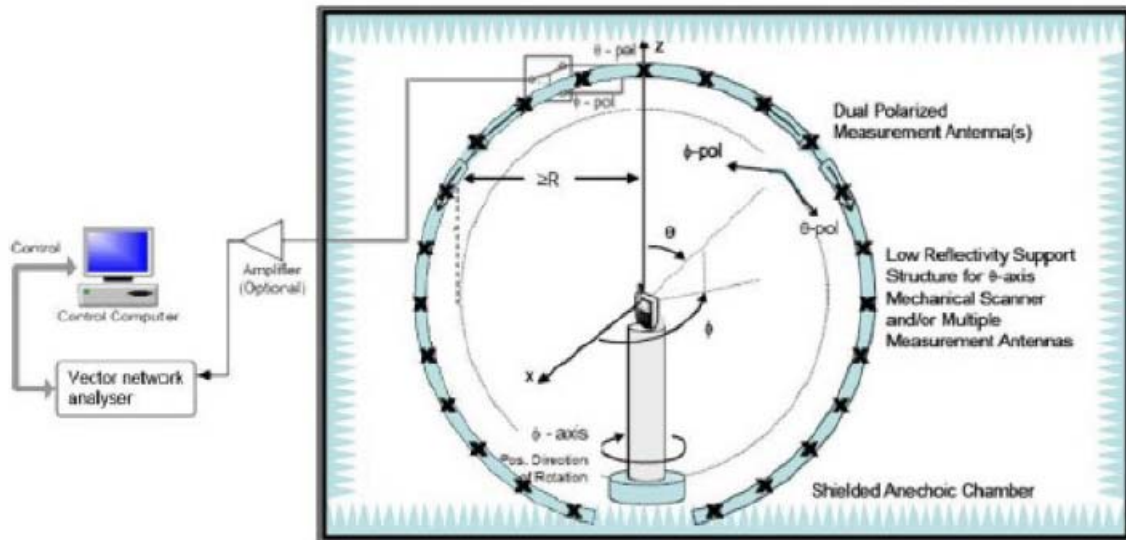
8 : Test software



9 : testing standard

Name	Parameter	Method	Standard no.
Antenna performance	Radiation efficiency	IEEE Standard Test Procedures for Antennas	ANSI/IEEE Std 149- 2021

## 10 : test setup



## 11 : Test instrument and calibration date

Equipment	Manufacturer	Model number	Last Cal.	Due Date
Network analyzer	Agilent	E5071B	2024.5.18	2025.5.17

## 12 : Testers and test dates

Tester	Zeng Feng
Date	20240720