

## Wireless Mouse User Manual

Compliant model: MMY40, E02E

### Precautions



This manual describes the important precautions you should take for safe operation of this product. Observe these precautions carefully to avoid personal injury, damage, fire, and other problems.

#### ■ Meaning of symbols



#### **WARNING**

Failure to observe precautions carries the possibility of serious personal injury or death due to fire, electric shock, or other causes.



#### **CAUTION**


Failure to observe precautions may result in personal injury due to electric shock or other causes, and may damage other equipment.


\*Screenshots will be replaced with the target language version's when they are all ready.

\*XXX will be determined when they are all fixed.

 Prohibited action

 Mandatory action


 Situation that needs attention

 Notes and reference information

## WARNING

 **If a foreign object (water, metal chips) enters this product, stop using immediately and remove the batteries.**

Continuing to use the product as it is may cause a fire or an electric shock.

 **If abnormalities such as overheating, emitting smoke, or strange odors occur, stop using the product immediately and disconnect it from the connected device. Also, after confirming that there is no heat generation, please remove the battery from this product while being careful to avoid burns. Afterwards, please contact your dealer.**

Continuing to use the product as it is may cause a fire or an electric shock.

 **Please do not drop or hit this product.**

**In the event that the product is damaged, cease usage immediately. Turn off the power and remove the batteries. Afterwards, please contact your dealer.**

Fires or electric shocks may occur if this product is used when damaged.

 **Do not attempt to disassemble, modify, or repair this product or the receiver.**

Doing so may cause a fire, electric shock, or product damage.

Such malfunctions are not covered under warranty.

 **Do not put this product in fire.**

Breakage may cause fire or injury.

 **Please do not insert or pull out the receiver unit with wet hands.**

It can cause a fire or electric shock.

 **The receiver unit presents a swallowing hazard for children, so be sure to store it in a place out of the reach of children.**

## CAUTION

 **Do not place this product in any of the following environments:**

- In a car exposed to sunlight or a place exposed to direct sunlight.
- In a place that becomes hot, such as around a heater.
- In a moist place or a place where condensation may occur.
- In an uneven place or a place exposed to vibration.
- In a place where a magnetic field is generated (such as near a magnet.)
- In a dusty place.



**This product does not have a waterproof structure. Use or store in a place not exposed to liquids such as water.**

Any liquid such as rain, water spray, juice, coffee, steam, and sweat, can cause this product to breakdown.



- Only use this mouse with PCs, smartphones, tablets, and video game systems.
- Do not use this product with any device that may be significantly affected in the case of this product malfunctioning.
- If this product is used on a transparent surface such as glass or a highly reflective surface such as a mirror, the optical sensor will not function correctly and the mouse cursor movement will become unstable.
- Please note that looking directly into the sensor light may hurt your eyes.
- When you no longer need to use this product and the batteries, be sure to dispose of them in accordance with the local ordinances and laws of your area.

## ■ Batteries



### CAUTION



**Please use either an AA alkaline battery, an AA manganese battery or an AA nickel-metal hydride rechargeable battery.**



**When not using this product for long periods of time, remove the battery.**

Not removing them may cause leakage or malfunction.

## ■ Cleaning the Product

If this product becomes dirty, wipe it with a soft, dry cloth.



Using a volatile liquid such as paint thinner, benzene or alcohol can affect the material quality and/or discolor this product.

Please take caution regarding the following for disinfection.



Gently soak a cleaning cloth, such as a microfiber cloth, in the disinfectant solution. Ensure there are no loose droplets and gently wipe the product using the cloth.

After wiping, dry thoroughly and wipe off any residual liquid.

\*Do not spray any liquid onto the product directly. Doing so can cause electric malfunctions.



## IMPORTANT



**Do not spray any liquid onto the product directly.**

Doing so can cause electric malfunctions.



**Do not use organic solvents or expose the product to ultraviolet light.**

Using these can cause damage to the exterior such as the deterioration of the housing components or paints.



**We recommend using disposable gloves.**



**When using any alcohol-based products, please check its associated precautions and that it is appropriate for the specific purpose.**



**Please turn off any connected devices.**

\*When in sleep or hibernation mode, turn off connected devices.

\*Please unplug the AC adapter and power cable from the outlet.



• Please note that the customer is fully responsible for repair costs in the event that the product is damaged or operates abnormally due to the disinfection process.

• It is recommended that you sanitize your hands before and after using PCs and peripherals that are used by multiple people to prevent the spread of infection through the equipment.

## Cautions for Wireless Equipment

This product is a wireless device that can use the entire 2.4 GHz band, and is able to avoid the mobile entity identification device range. The GFSK method is adopted as the radio wave method, and the interference distance is 10 m. The 2.4 GHz band is also used in medical devices, Bluetooth, and wireless LAN devices of the IEEE 802.11b/11g/11n standards.

• Before using this product, check that there are no other “radio stations”\* operating nearby.

• If electromagnetic interference occurs between this product and other “radio stations”\*, use this product in another location or stop using this product.

\*Other "radio stations" refer to industrial, scientific and medical devices using the 2.4 GHz band, the same as this product, other radio stations of this type, licensed radio station premises for a mobile object identification system that is used in factory production lines, certain non-licensed low power radio stations, and amateur radio stations.



## WARNING



- Do not use with any equipment that may be significantly affected in the case of this product malfunctioning. There are rare cases in which an external radio wave at the same frequency, or the radio wave emitted from a mobile phone, causes this product to malfunction, slow down, or fail to operate.
- Do not use this product in places where radio wave usage is prohibited, such as hospitals. Radio waves of this product may affect electronic devices and medical devices (for example pacemakers).
- Due to the possibility of hindering safe navigation of aircraft, use of wireless mouse in aircraft is prohibited by the Civil Aeronautics Act. Turn off the power of the wireless mouse before boarding and do not use after boarding.

\*ELECOM is not liable for any accidents or any indirect or consequential damage incurred due to the failure of this product.

## How to use



### Items included in this package



The following items are included in this package. Verify the package to ensure all items are accounted for prior to using this product. While every effort has been made to ensure proper packaging, in the event that any shortage or damage is discovered, please contact the retailer where the product was purchased.

- **Mouse × 1**
- **Receiver unit × 1**
- **AA alkaline dry cell battery for confirming operability × 1**

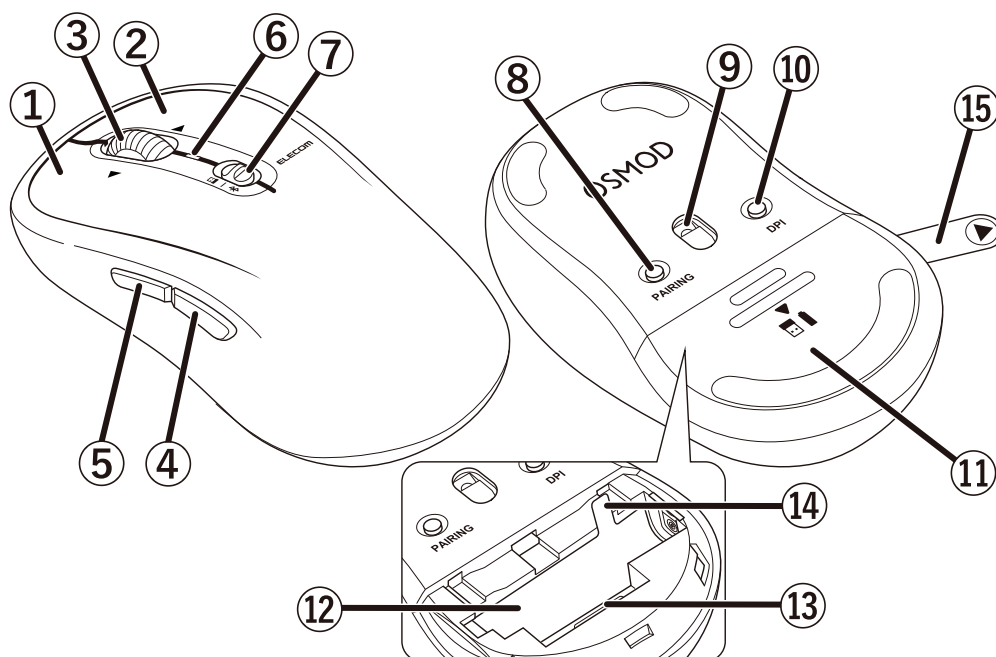


The batteries and receiver unit are already installed into the mouse. Please remove the battery insulating pull tab before use. Also, take out the receiver unit as needed.

### Name and function of each part



## ■ Mouse



### ① Left button

To left click on your PC.

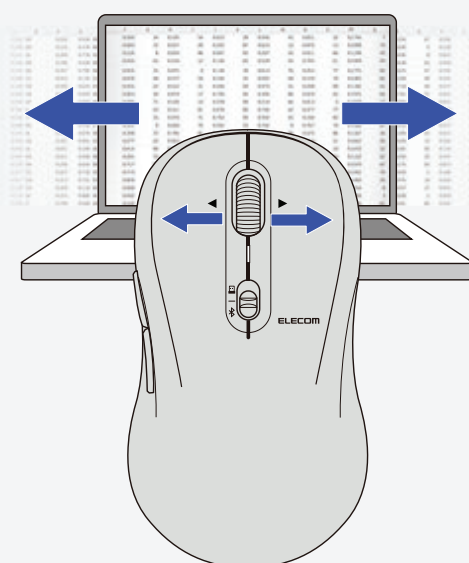
### ② Right button

To right click on your PC.

### ③ Tilt wheel

Rotate forward and backward or click like a button to operate your PC.

You can scroll horizontally by tilting the wheel to the left or right.



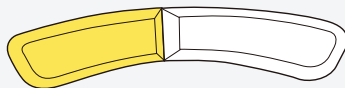
You will need to install the "ELECOM Mouse Assistant 6" from our website to use the left and right scroll function on Windows. Refer to "[Install ELECOM Mouse Assistant 6](#)".

### ④ "Back" button

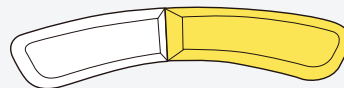
Performs the "Back" function on the Web browser.

### ⑤ "Forward" button

Performs the "Forward" function on the Web browser.



**"Forward" button**  
Continue to next page.



**"Back" button**  
Return to previous page.



You will need to install the "ELECOM Mouse Assistant 6" from our website to use the "Back" and "Forward" button on Mac. Refer to ["Install ELECOM Mouse Assistant 6"](#).

### ⑥ LED light

- When the power is turned on, it will light up for 3 seconds.

✱ : Blue

□ : White

- During pairing standby state, the LED blinks blue. If the pairing is successful, it will light up blue for 3 seconds.
- LED starts blinking red when the battery level is low.
- ⑩ When the DPI button is clicked to switch between DPI count, the LED will light up in the following manner for 3 seconds.

● Low : 1000 dpi → ● Mid : 1500 dpi → ● High : 2000 dpi → Low : 1000 dpi → ...

The default value is set to ● High: 2000 dpi.

### ⑦ Power/connection selection switch

Slide to the ✱ side to turn on the power in Bluetooth mode.

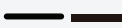
Slide to the □ side to turn on the power in Wireless mode.

Slide to the off position to turn off the mouse.

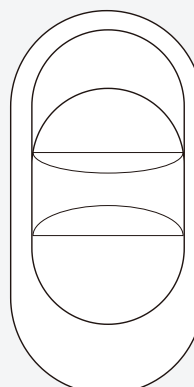
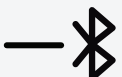
Wireless



Off



Bluetooth



### ⑧ Pairing button

Pair this product with your PC's Bluetooth module or a Bluetooth adapter.

Press and hold for 3 seconds during Bluetooth pairing to enter pairing mode.

### ⑨ Optical sensor

The LED light will turn blue when the power is on.

This sensor will detect mouse movements when you move the mouse.

\*Please note that looking directly into the sensor light may hurt your eyes.

### ⑩ DPI button

DPI count (pointer movement speed) can be switched between 3 stages, Low/Mid/High, by pressing this button.

The DPI count is as below.

Low: 1000 DPI

Mid: 1500 DPI

High: 2000 DPI

### ⑪ Battery cover

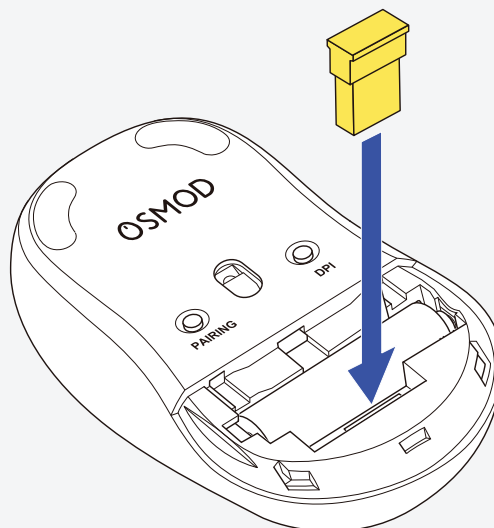
Remove this cover to insert the battery and the receiver unit.

### ⑫ Battery storage compartment

Holds the battery.

### ⑬ Receiver unit storage compartment

The receiver unit can be stored here when the mouse is not connected wirelessly.



### ⑭ Battery insulating tab

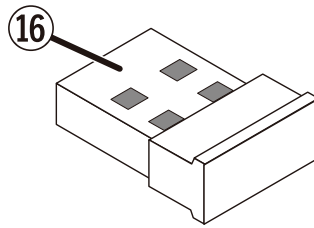
Remove this tab before using.

### ⑮ Battery removal sheet

Used to remove the battery from the battery storage compartment.



## ■ Receiver unit



### ⑩ USB-A plug

Connects to the PC USB-A port.

## Connecting and setting up the mouse



### Windows®

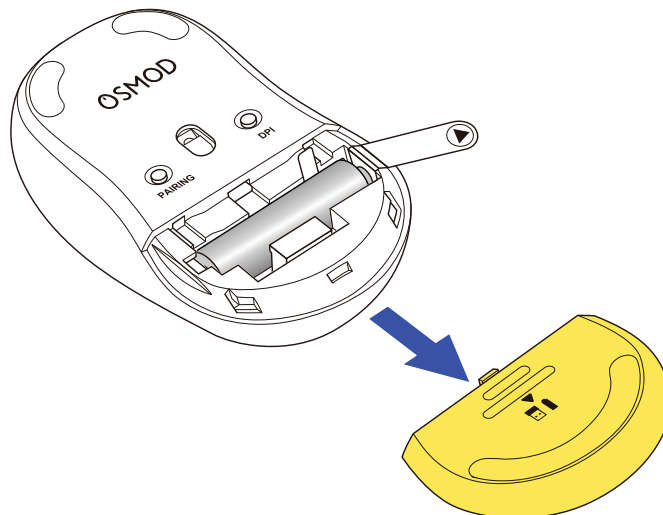


### Using Bluetooth connection

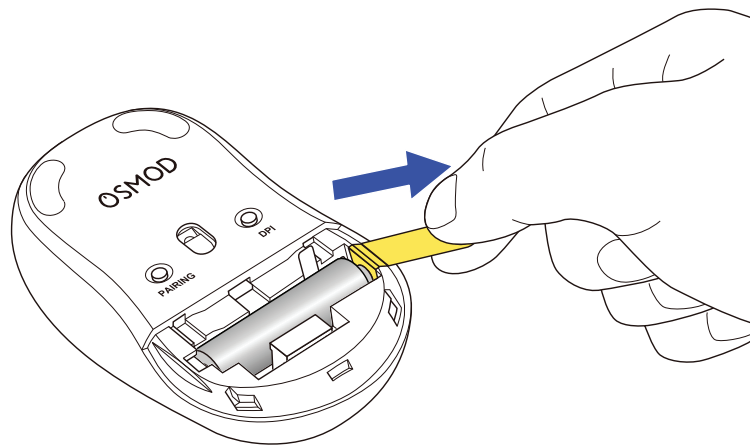


## 1. Remove the battery insulating tab.

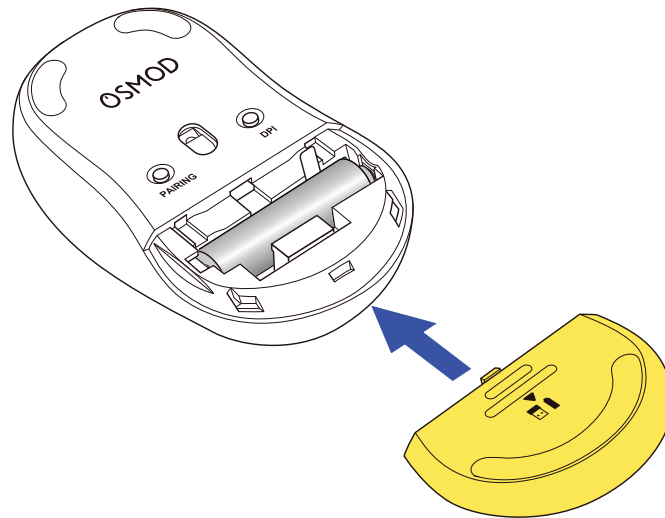
1) Remove the battery cover.



2) Remove the battery insulating tab.

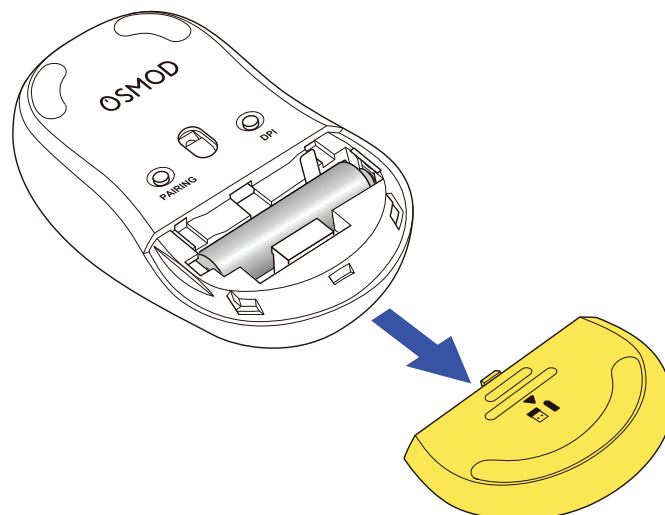


**3) Put the battery cover back on.**



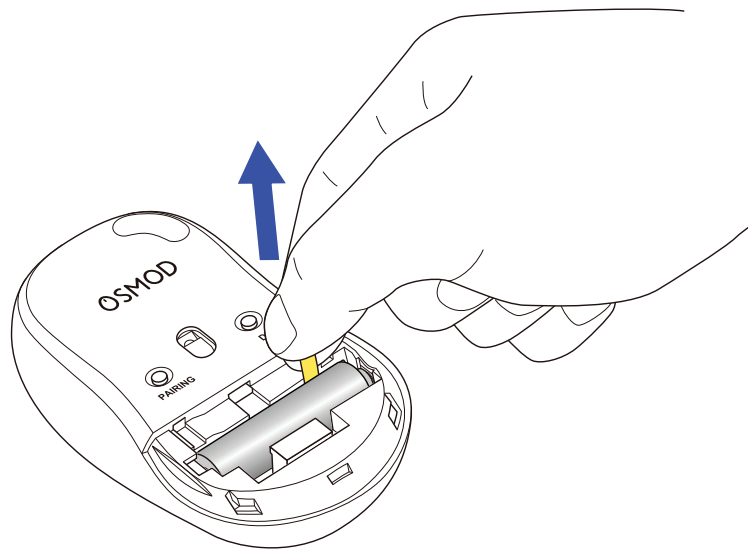
**Replacing the battery...**

**1) Remove the battery cover.**



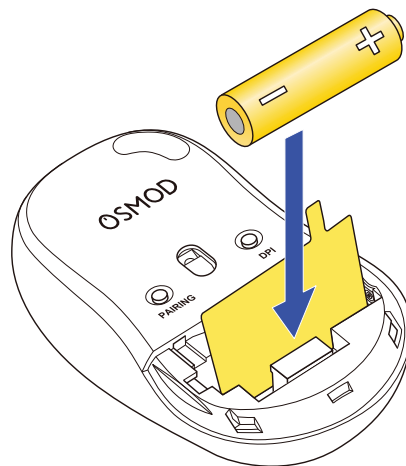
**2) Remove the battery.**

Pull the battery removal sheet to remove the battery.



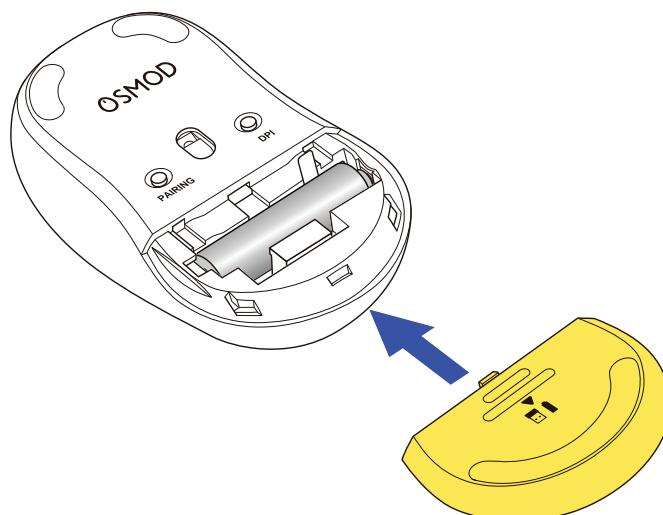
**3) Insert the battery as instructed on the battery removal sheet.**

Insert the battery in with the battery removal sheet below it.



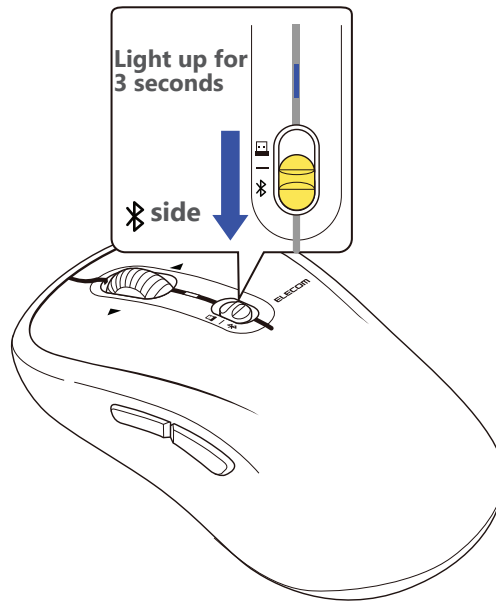
Ensure that the battery is inserted with the positive (+) and negative (-) terminals oriented correctly.

**4) Put the battery cover back on.**



## 2. Turn the power ON

1) Slide the power/connection switch of the product to the  position.



The LED lights up blue for 3 seconds.

\*When the battery is running low, the LED will blink red.

• **When the power/connection switch is slid to  for the first time**

Pairing mode will be activated and the LED lamp will blink blue.



### Power-saving mode

When the mouse is left untouched for a fixed period of time while the power is on, it automatically shifts to power-saving mode.

The mouse returns from power-saving mode when it is moved.

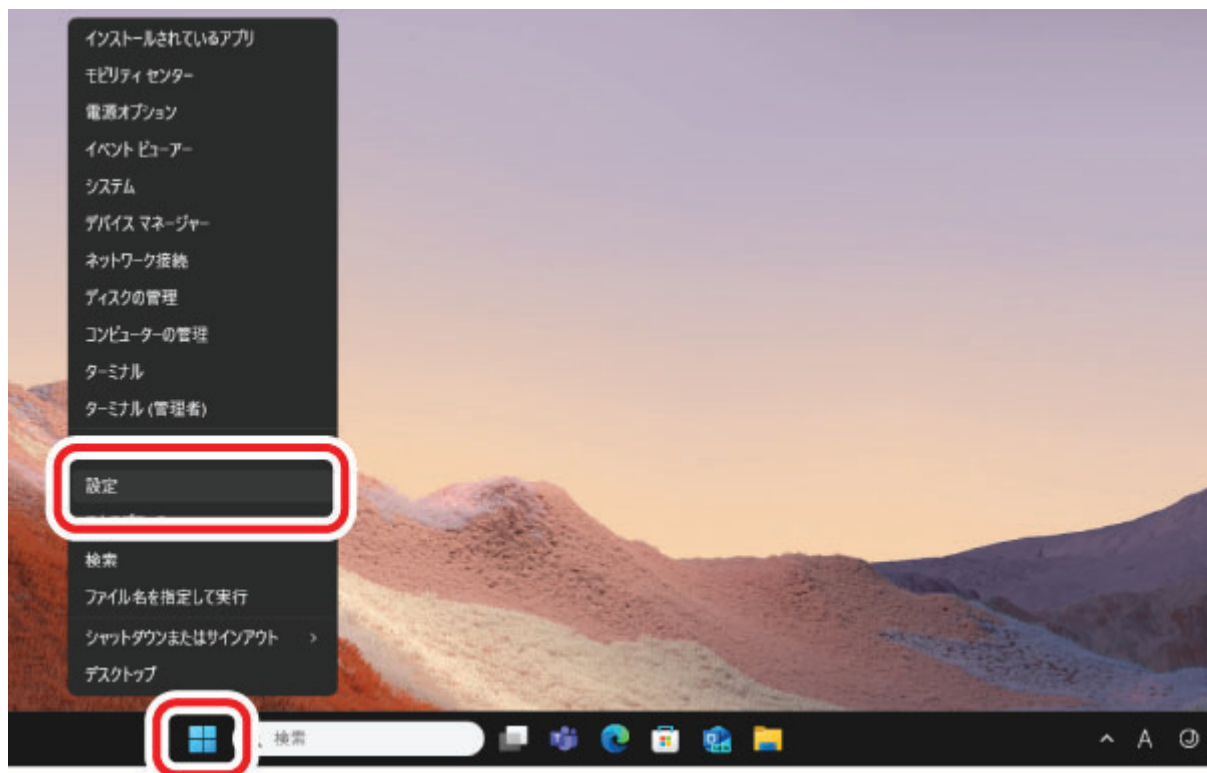
\*Mouse operation may be unstable for 2-3 seconds after returning from the power-saving mode.

## 3. Pairing with a PC

- Pairing involves registering Bluetooth devices (in this case, this product and your device) with each other, and authorizing a connection between them.
- This section covers Windows standard Bluetooth functions. Depending on your device or Bluetooth adaptor, unique Bluetooth functions may be used. Please read the respective manuals for each function.
- Please carry out the pairing operation using your current mouse or touchpad on your device.
- The following instructions are for Windows 11 (24H2).

**1) Right click on “Start” on the bottom of the screen and then, select “Settings”.**

The “Settings” page will appear.



2) Under "Home", select "Add device" under "Bluetooth devices".

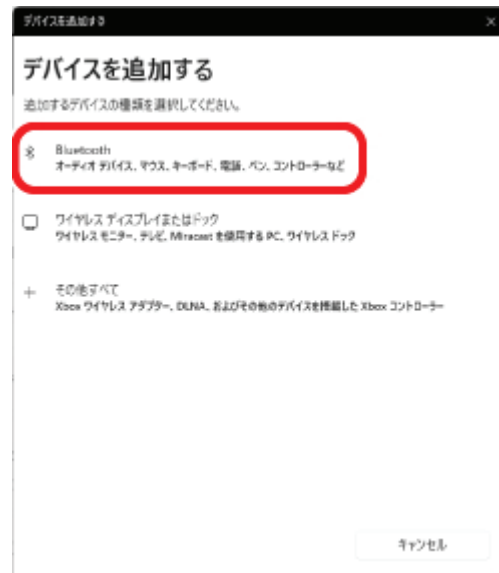
The "Add a device" page will appear.



If "Bluetooth" is off, turn it on.



### 3) Select “Bluetooth”.

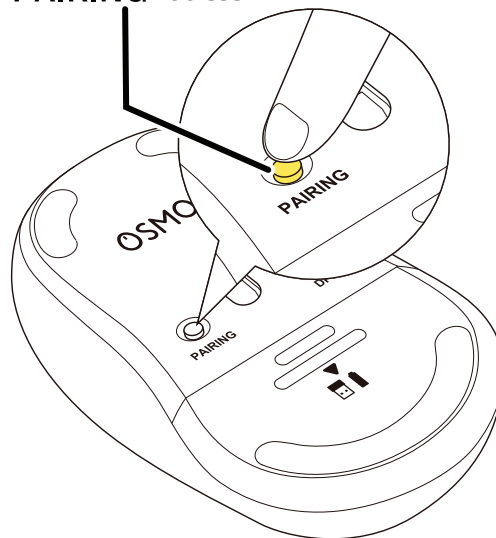


### 4) When the “Add a device” screen is displayed, hold down the PAIRING button on the underside of this product for 3 seconds and then release.

Pairing mode will be activated and the LED lamp will blink blue.



**PAIRING button**



##### 5) Select "OSMOD Seven".

Pairing begins.



##### 6) When the message changes to "Your device is ready to go!", select "Done".



7) Pairing is complete when this product is added to “Bluetooth devices” and the status is “Connected”.

The LED light will turn on for 3 seconds then turn off.



You can now use the mouse.

By downloading and installing the "ELECOM Mouse Assistant 6" from our company website, the button assignment function can be used. Please proceed to "[Install ELECOM Mouse Assistant 6](#)".

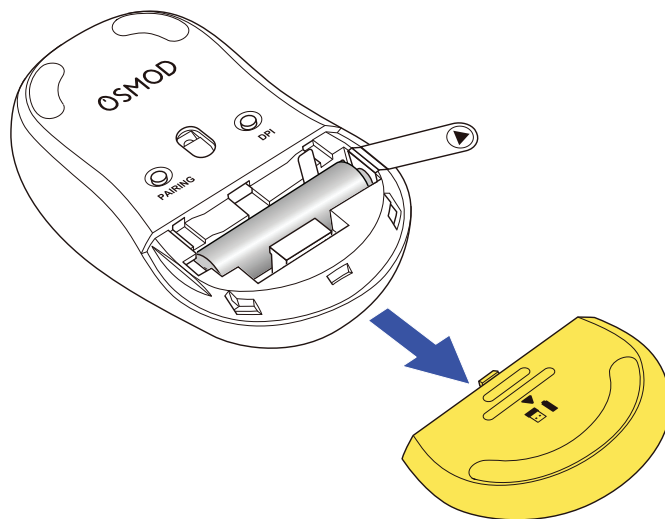
## Using wireless connection



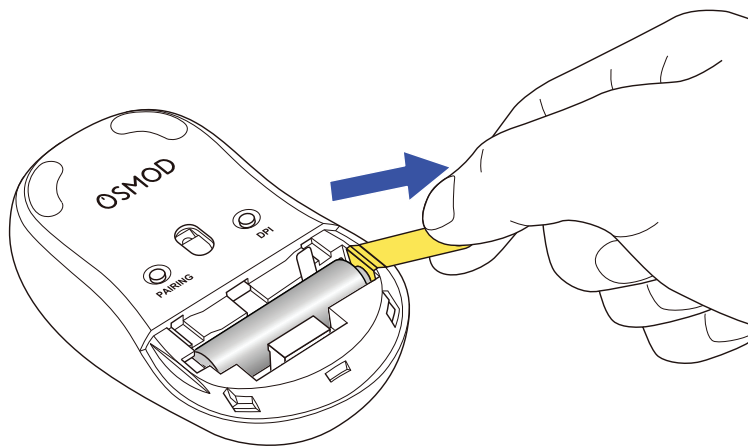
### 1. Remove the battery insulating tab.



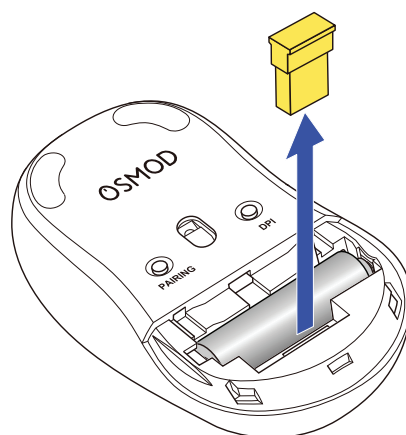
**1) Remove the battery cover.**



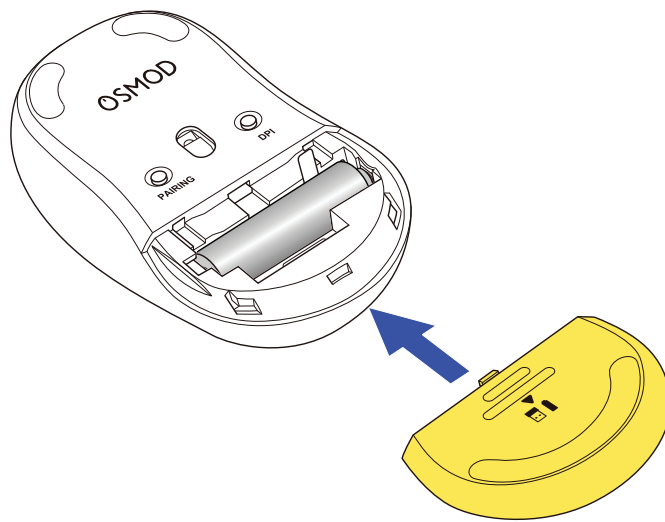
**2) Remove the battery insulating tab.**



**3) Remove the receiver unit.**

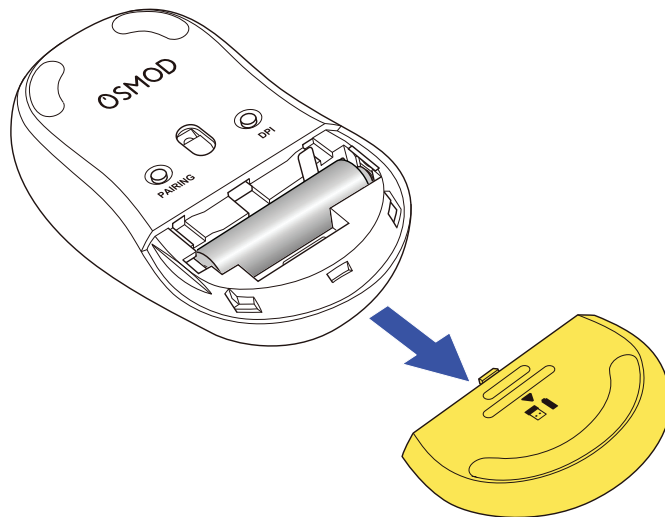


**4) Put the battery cover back on.**



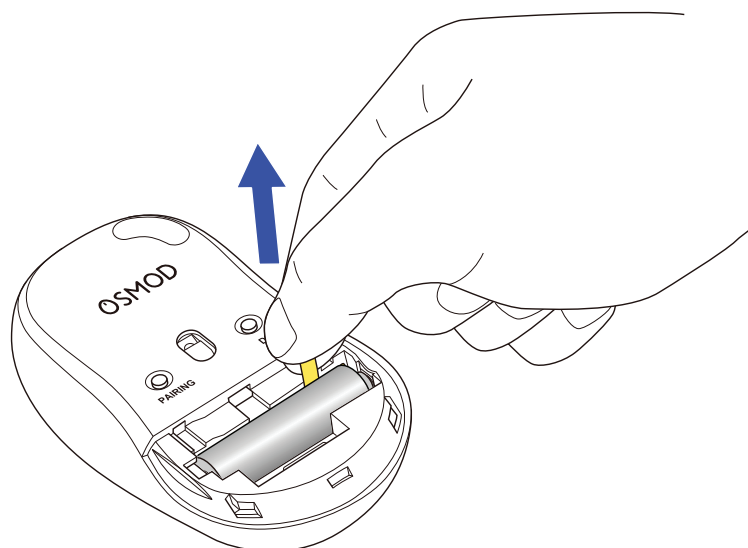
**Replacing the battery...**

**1) Remove the battery cover.**



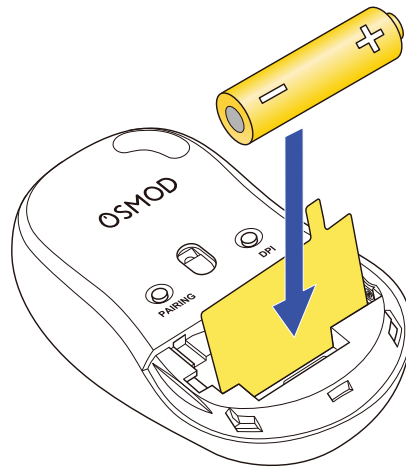
**2) Remove the battery.**

Pull the battery removal sheet to remove the battery.



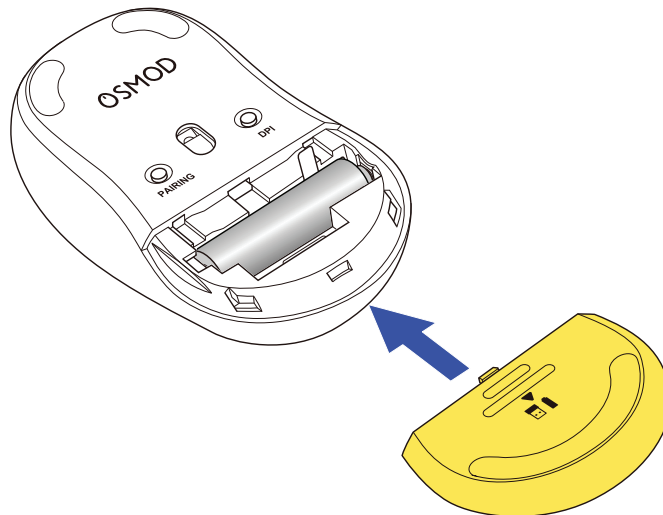
**3) Insert the battery as instructed on the battery removal sheet.**

Insert the battery in with the battery removal sheet below it.



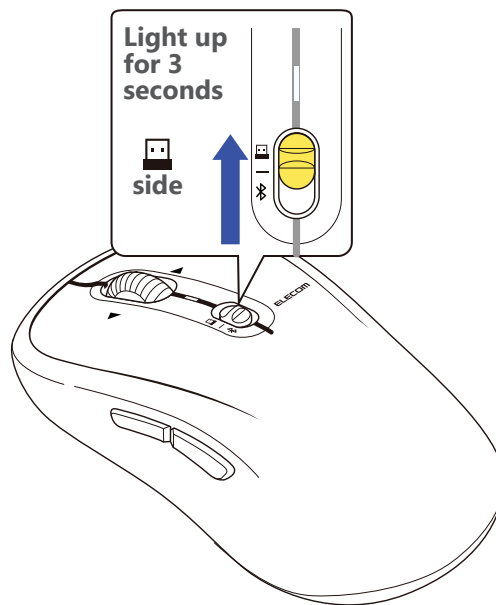
Ensure that the battery is inserted with the positive (+) and negative (-) terminals oriented correctly.

**4) Put the battery cover back on.**



## 2. Turn the power ON

1) Slide the power/connection switch of the product to the  position.



The LED lights up white for 3 seconds.

\*When the battery is running low, the LED will blink red.



### **Power-saving mode**

When the mouse is left untouched for a fixed period of time while the power is on, it automatically shifts to power-saving mode.

The mouse returns from power-saving mode when it is moved.

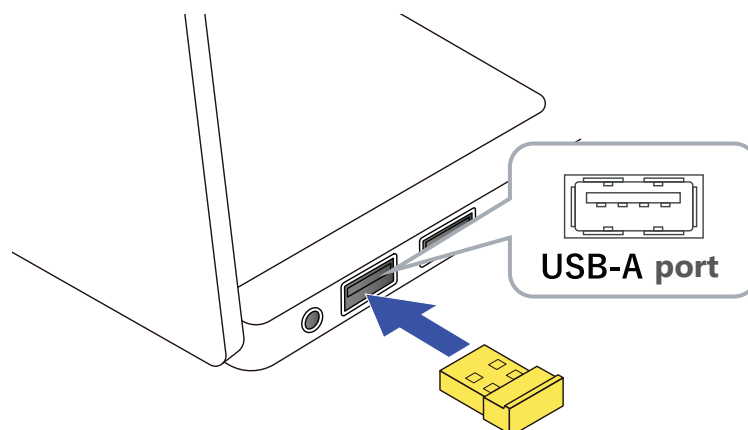
\*Mouse operation may be unstable for 2-3 seconds after returning from the power-saving mode.

## **3. Connect to a PC**

### **1) Start up your PC.**

Please wait until the PC has started up and can be operated.

### **2) Insert the receiver unit into the PC's USB-A port.**



You may use any USB-A port.



▪ Ensure that the connector is correctly oriented to the port.

- If there is strong resistance when inserting, check the shape and orientation of the connector. Forcibly inserting the connector may damage the connector, and there is a risk of injury.
- Do not touch the terminal portion of the USB connector.



#### When removing the receiver unit

This product supports hot plugging. The receiver unit can be removed while the PC is on.

### 3) The driver will be automatically installed, and you will then be able to use the mouse.

**You can now use the mouse.**

By downloading and installing the "ELECOM Mouse Assistant 6" from our company website, the button assignment function can be used. Please proceed to "[Install ELECOM Mouse Assistant 6](#)".

## Change the mouse pointer speed

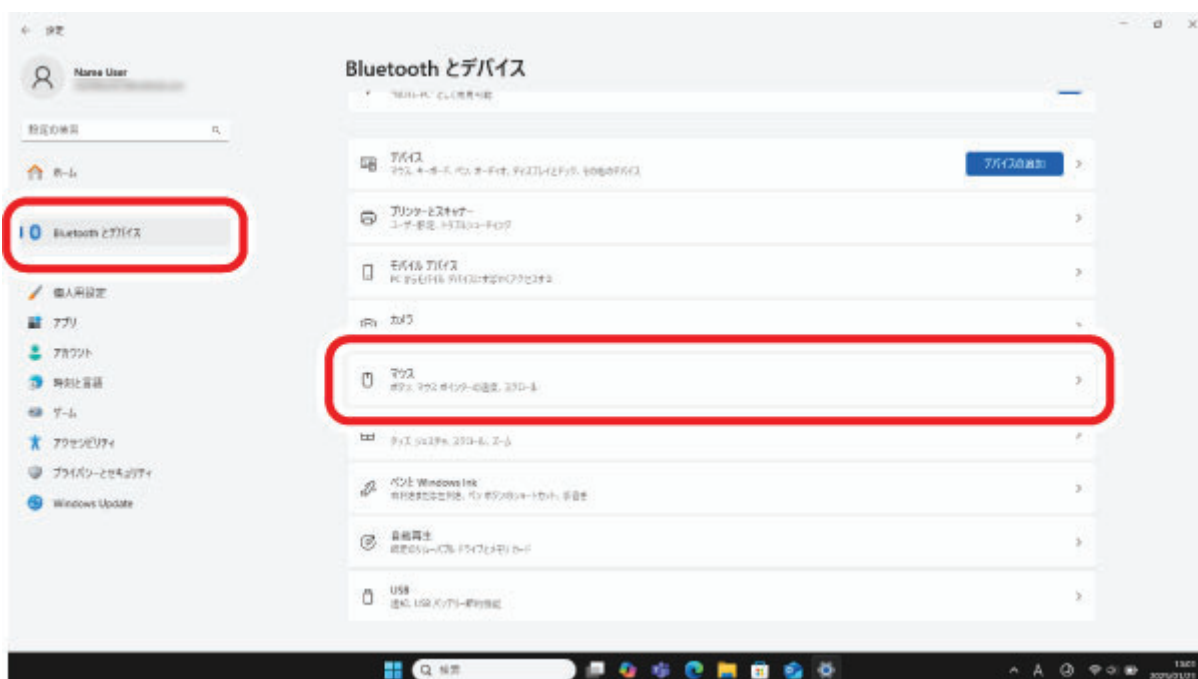
Adjust the mouse pointer movement speed on your PC if the mouse pointer moves too fast or too slow.

### ■ For Windows 11

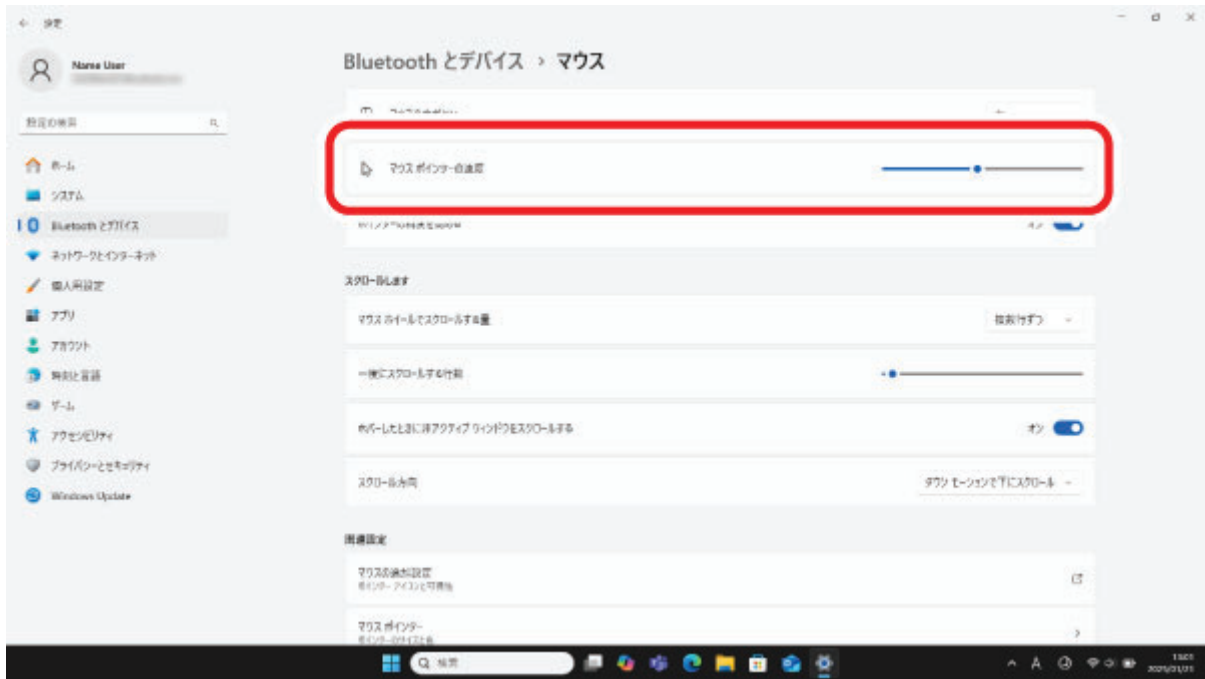
#### 1) Click on "Start" on the bottom of the screen and select "Settings".

The "Settings" page will appear.

#### 2) Select "Bluetooth & devices" and then "Mouse".



3) Adjust the “Mouse pointer speed” slider bar to adjust the mouse pointer movement speed.



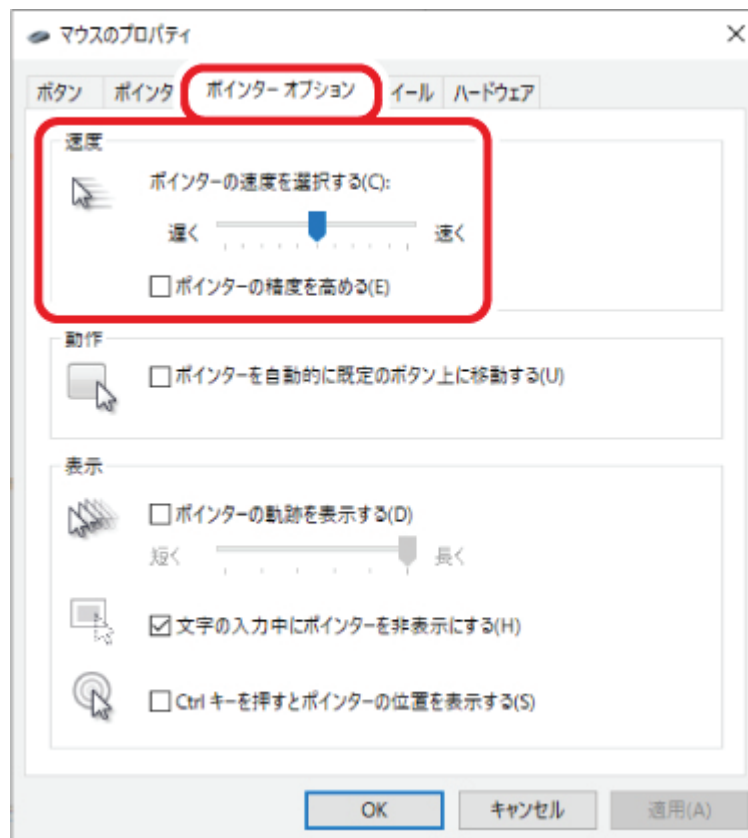
## ■ For Windows 10

1) Open “Mouse” properties.

From the start menu, select the Settings icon, select “Devices” → “Mouse”, then select “Additional mouse options” under “Related Settings”.

2) Select the “Pointer Options” tab.

3) Adjust the “Select a pointer speed” slider bar to adjust the mouse pointer movement speed.



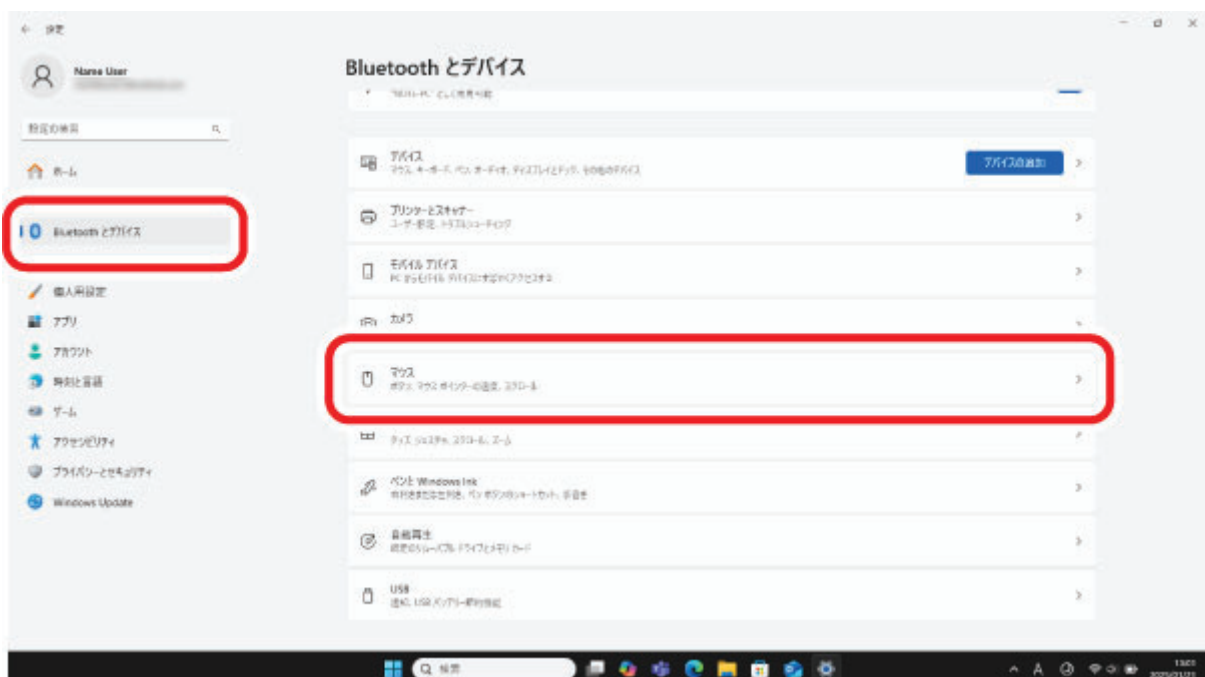
## Change the number of lines scrolled in one wheel turn

### ■ For Windows 11

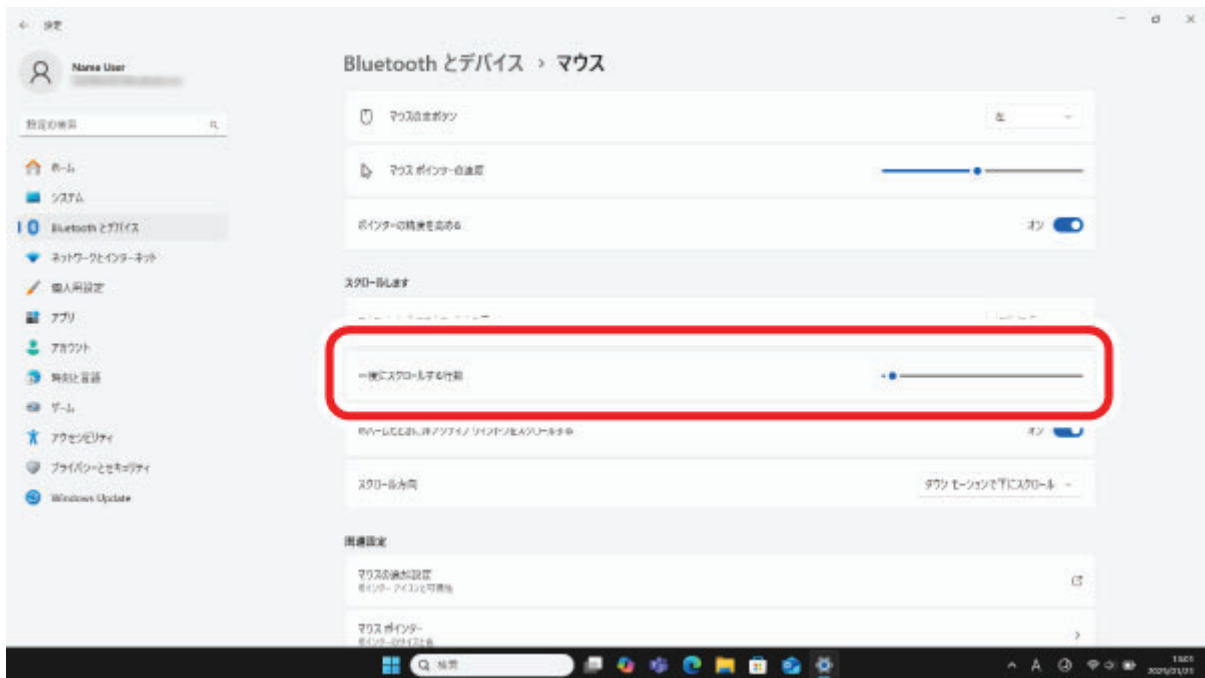
1) Click on "Start" on the bottom of the screen and select "Settings".

The "Settings" page will appear.

2) Select "Bluetooth & devices" and then "Mouse".



3) Adjust the "Lines to scroll at a time" slider bar to adjust the number of lines per scroll.



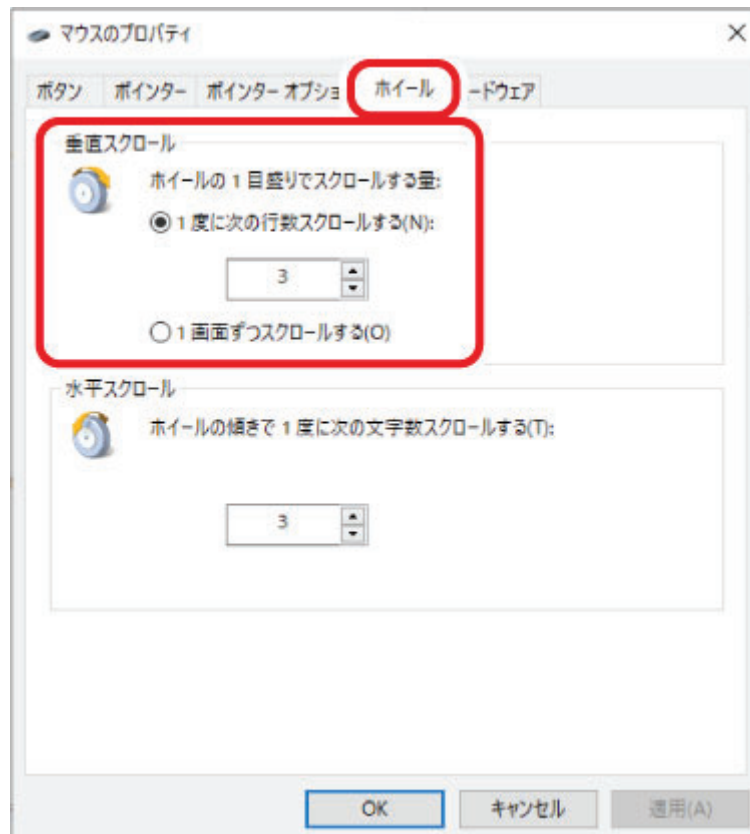
## ■ For Windows 10

### 1) Open "Mouse" properties.

From the start menu, select the Settings icon, select "Devices" → "Mouse", then select "Additional mouse options" under "Related Settings".

### 2) Select the "Wheel" tab.

### 3) Change the value of "The following number of lines at a time" under "Roll the wheel one notch to scroll"





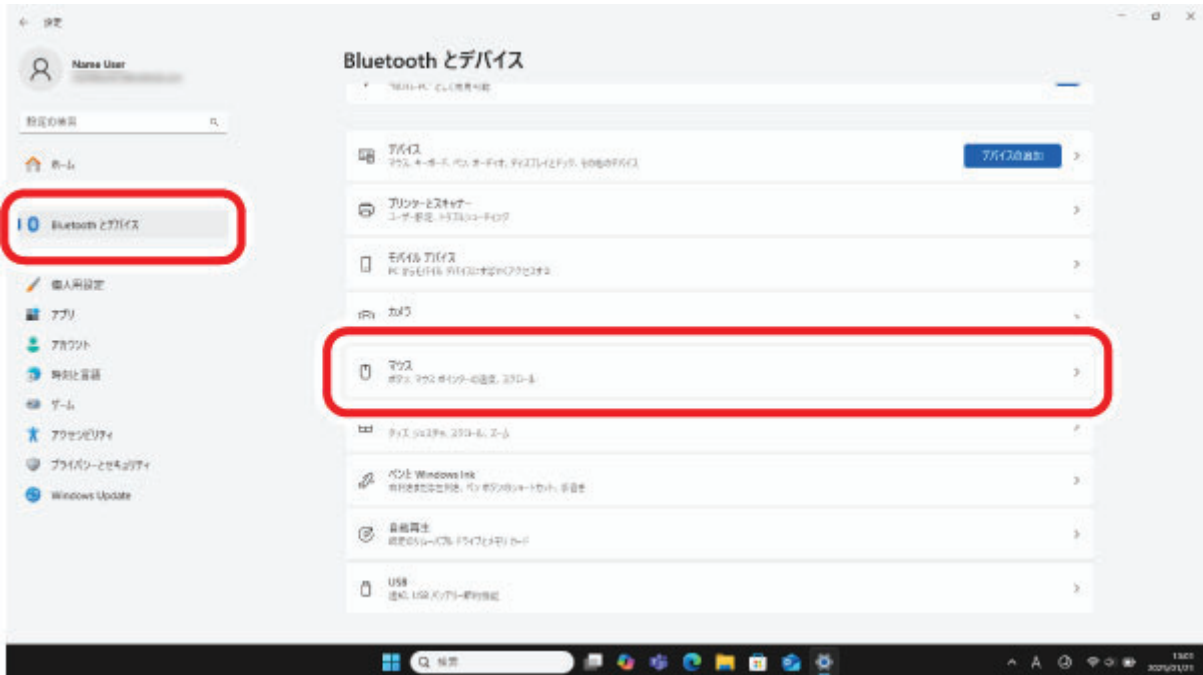
## Change scroll direction (Windows 11 only)

Change the scroll direction for when the scroll wheel on the mouse is moved.

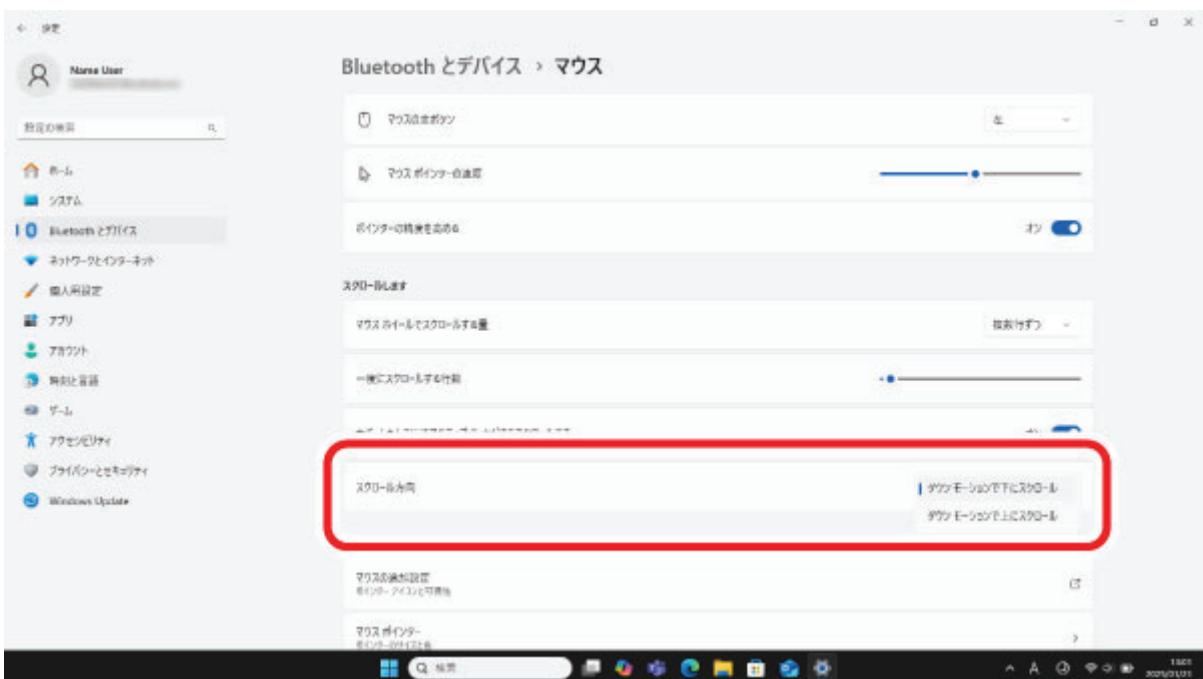
### 1) Right click on “Start” on the bottom of the screen and select “Settings”.

The “Settings” page will appear.

### 2) Select “Bluetooth & devices” and then “Mouse”.



### 3) Click “Scroll direction” to change the scroll direction.

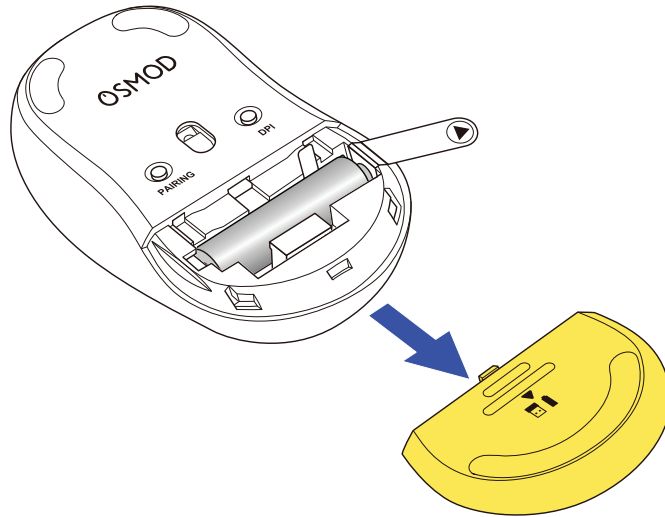


Select “Down motion scrolls up” to reverse the scroll direction when the scroll wheel is moved.

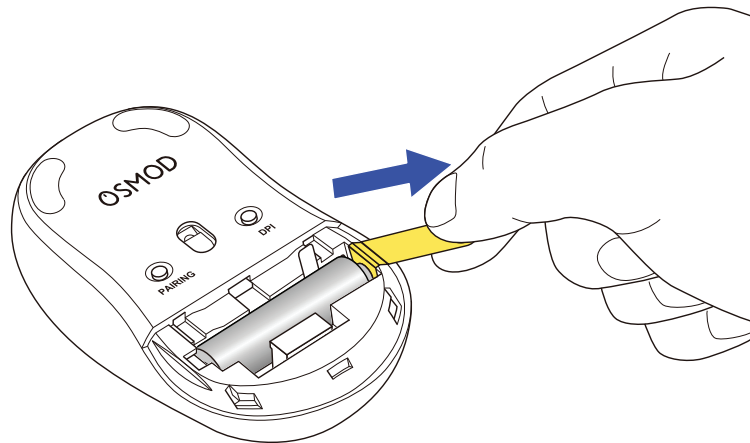
## Using Bluetooth connection

**1. Remove the battery insulating tab.**

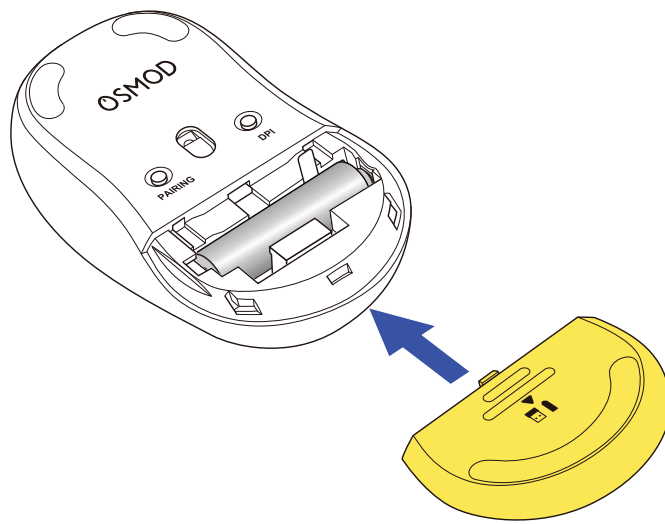
1) Remove the battery cover.



2) Remove the battery insulating tab.

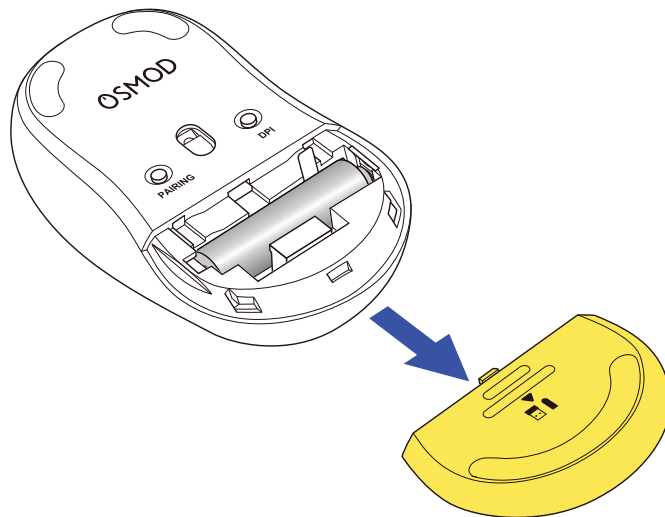


3) Put the battery cover back on.



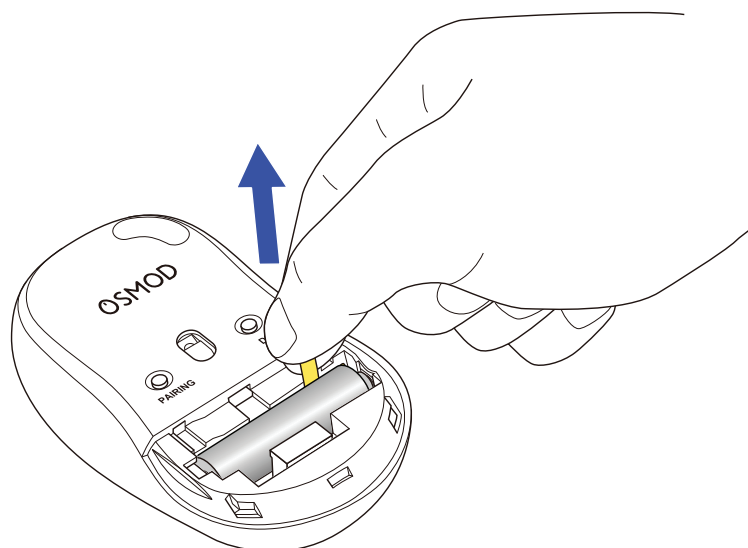
## Replacing the battery...

### 1) Remove the battery cover.



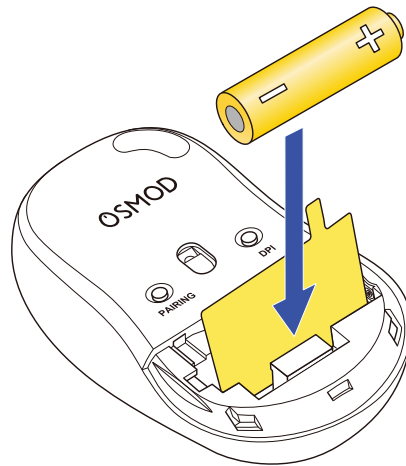
### 2) Remove the battery.

Pull the battery removal sheet to remove the battery.



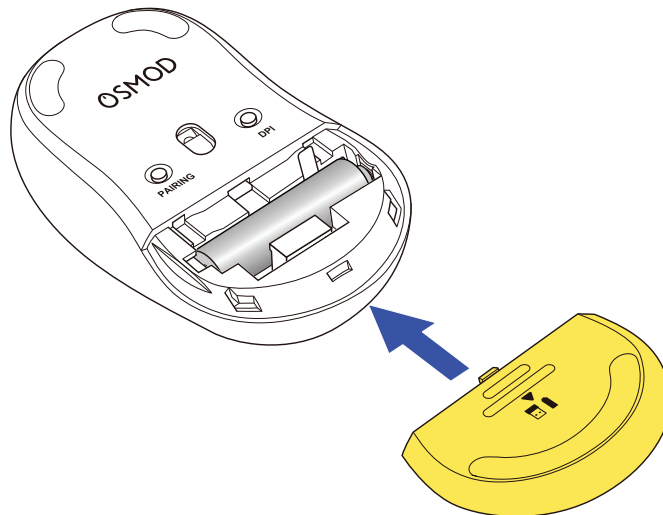
### 3) Insert the battery as instructed on the battery removal sheet.

Insert the battery in with the battery removal sheet below it.



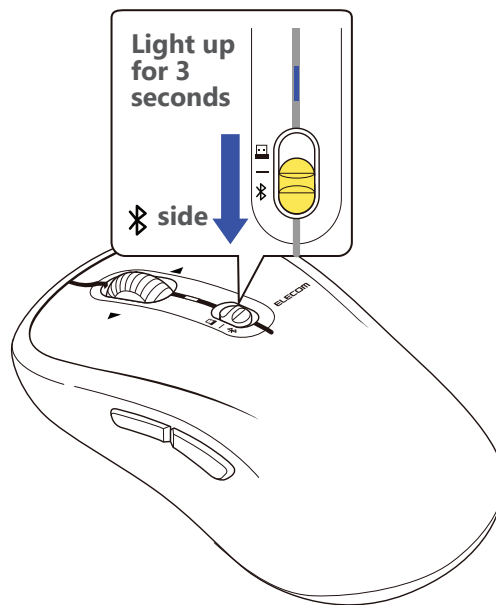
Ensure that the battery is inserted with the positive (+) and negative (-) terminals oriented correctly.

**4) Put the battery cover back on.**



## 2. Turn the power ON

1) Slide the power/connection switch of the product to the  position.



The LED lights up blue for 3 seconds.

\*When the battery is running low, the LED will blink red.

- **When the power/connection switch is slid to  for the first time**

Pairing mode will be activated and the LED lamp will blink blue.



#### **Power-saving mode**

When the mouse is left untouched for a fixed period of time while the power is on, it automatically shifts to power-saving mode.

The mouse returns from power-saving mode when it is moved.

\*Mouse operation may be unstable for 2-3 seconds after returning from the power-saving mode.

### **3. Pairing with a PC**

- Pairing involves registering Bluetooth devices (in this case, this product and your device) with each other, and authorizing a connection between them.
- This section covers macOS standard Bluetooth functions. Depending on your device or Bluetooth adaptor, unique Bluetooth functions may be used. Please read the respective manuals for each function.
- Use your current mouse or the touchpad on your device to operate your device until pairing is complete.
- The following instructions are for macOS Sequoia (15).

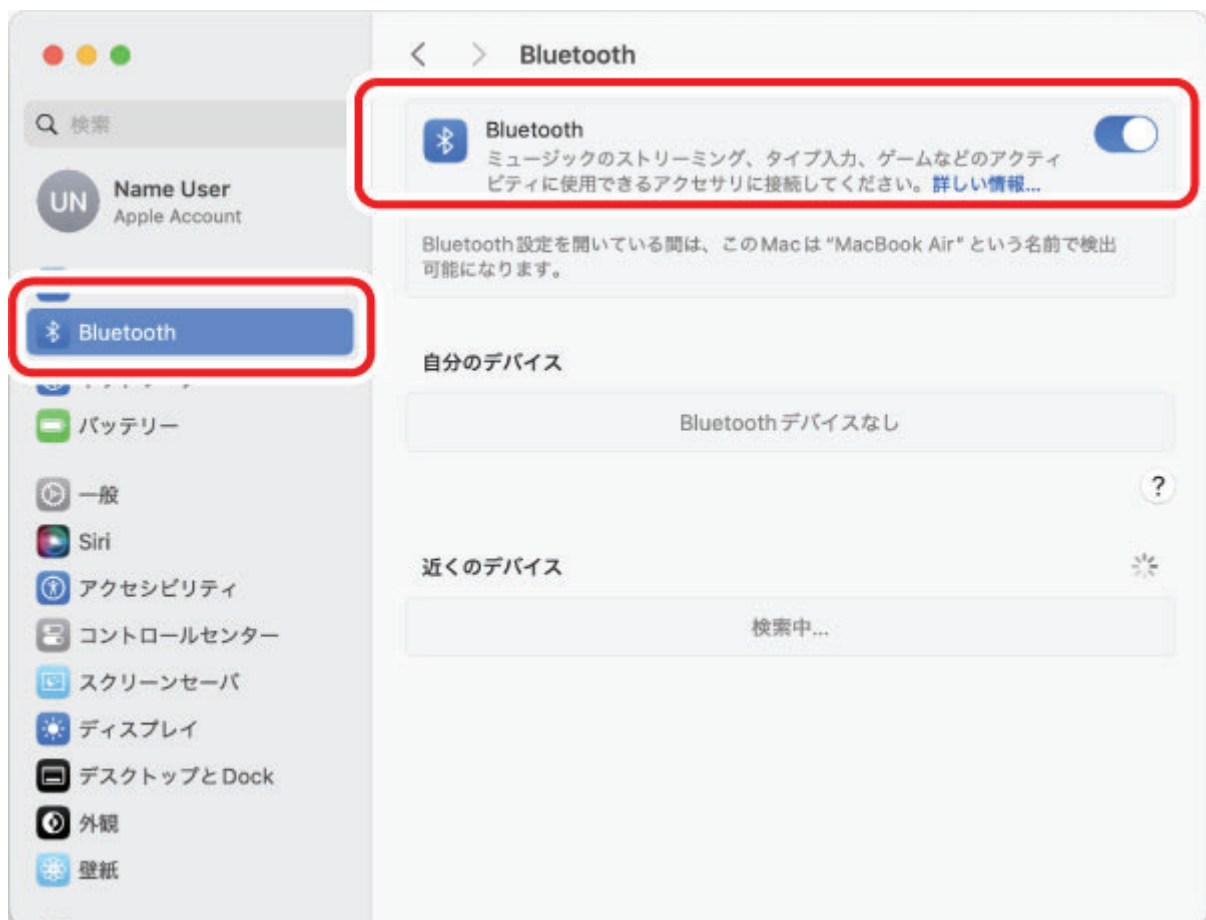
#### **1) From the Apple menu, click on "System Settings..."**

The "System Settings" page will appear.



**2) Select "Bluetooth" to turn on "Bluetooth".**

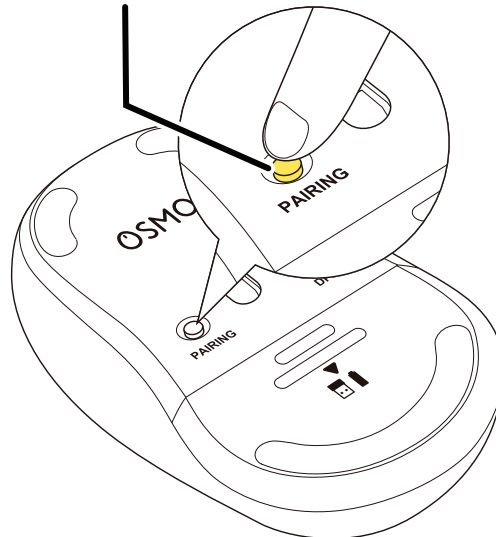
The "Bluetooth" system settings page will appear.



**3) During the device search, hold down the PAIRING button on the underside of this product for 3 seconds and then release.**

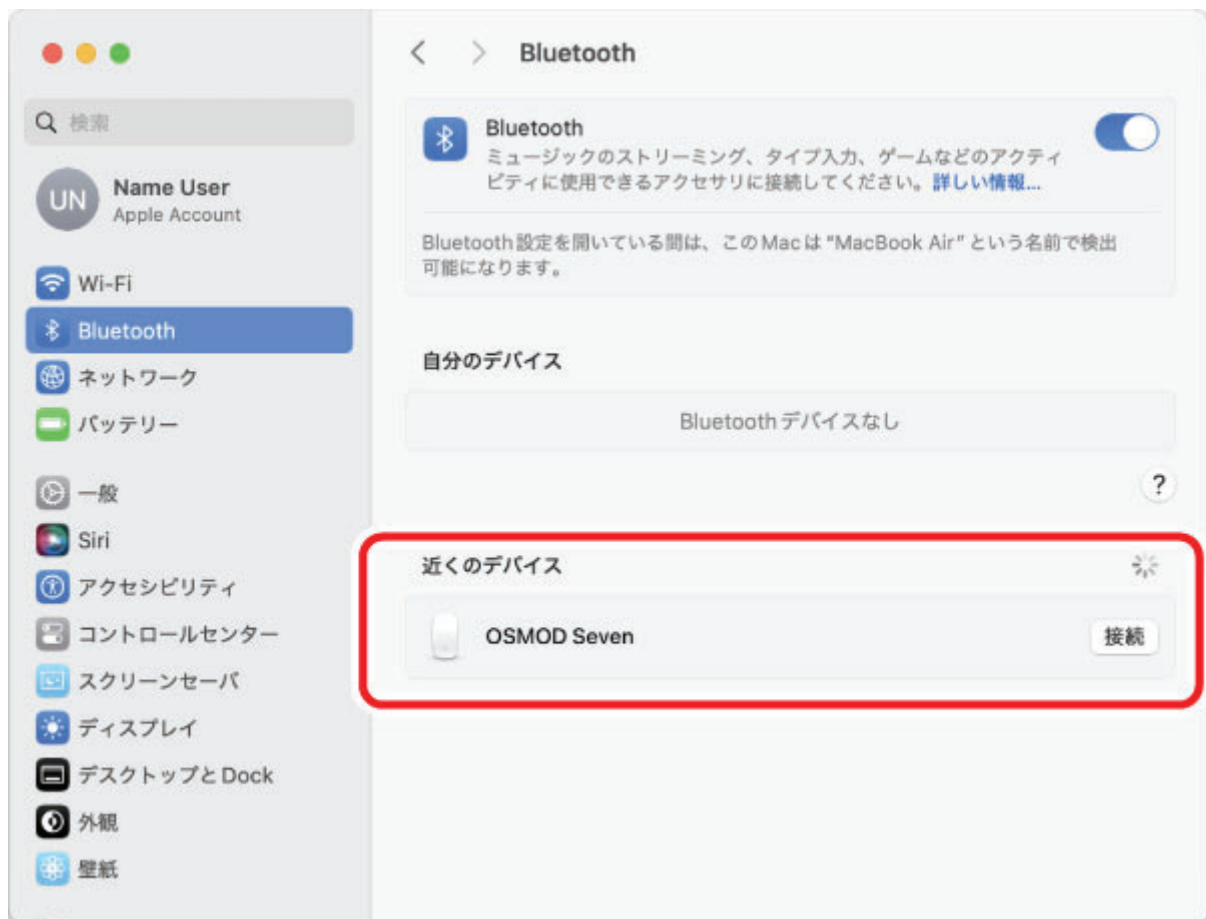
Pairing mode will be activated and the LED lamp will blink blue.

**PAIRING button**



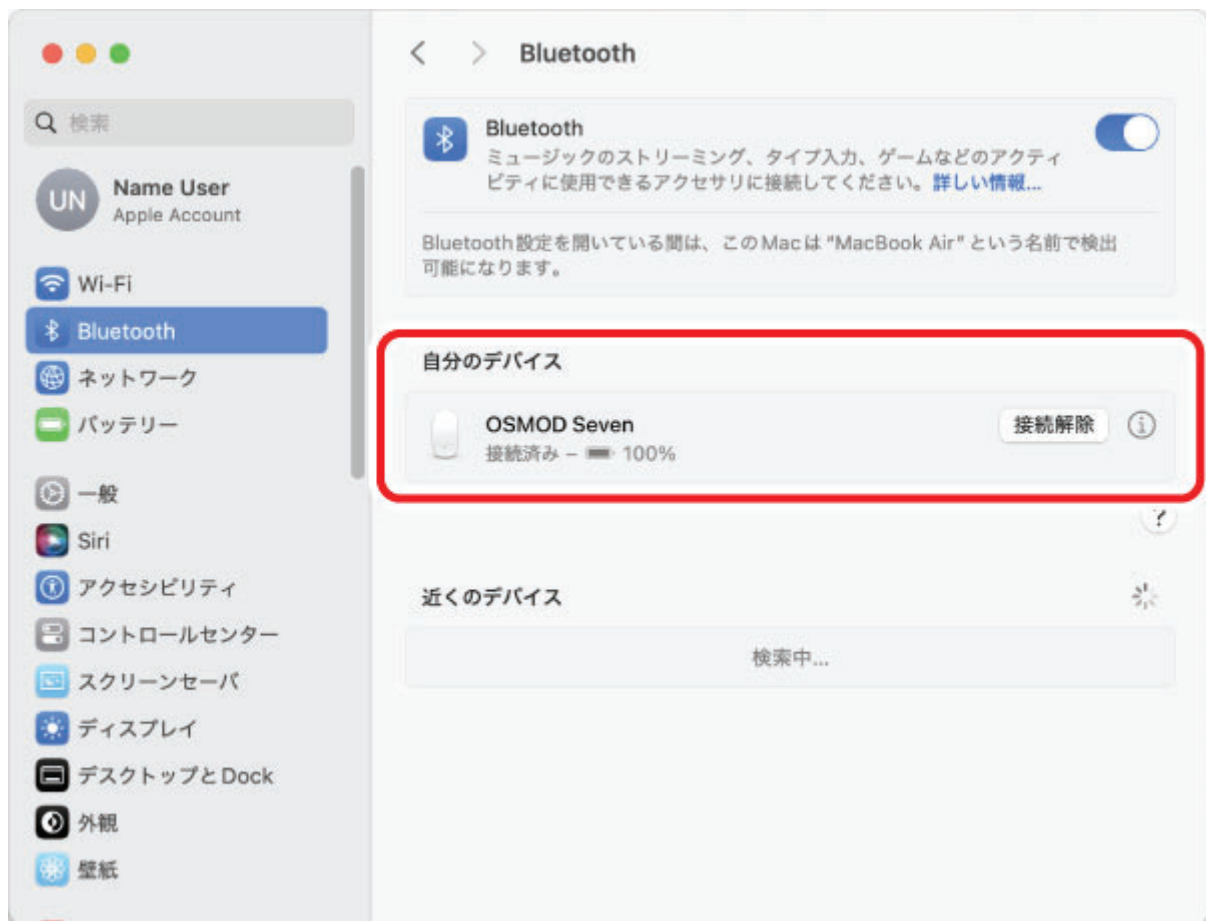
**4) When "OSMOD Seven" is detected under "Nearby Devices", select "Connect".**

Pairing begins.



**5) Pairing is complete when the status of "OSMOD Seven" changes to "Connected".**

The LED light will turn on for 3 seconds then turn off.



**You can now use the mouse.**

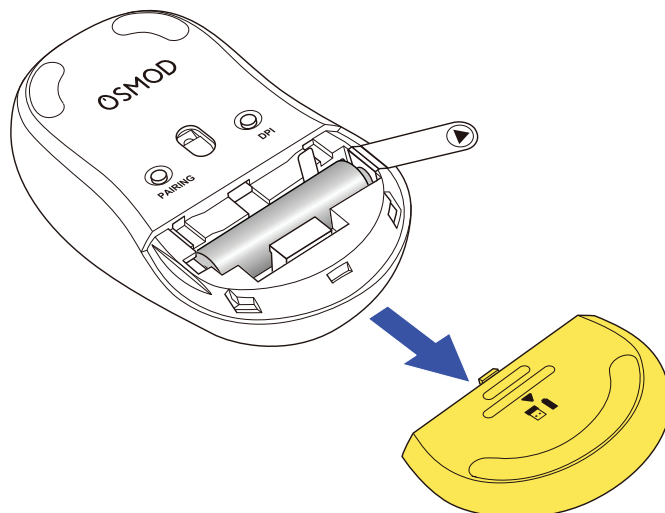
By downloading and installing the "ELECOM Mouse Assistant 6" from our company website, the button assignment function can be used. Please proceed to "[Install ELECOM Mouse Assistant 6](#)".

## Using wireless connection



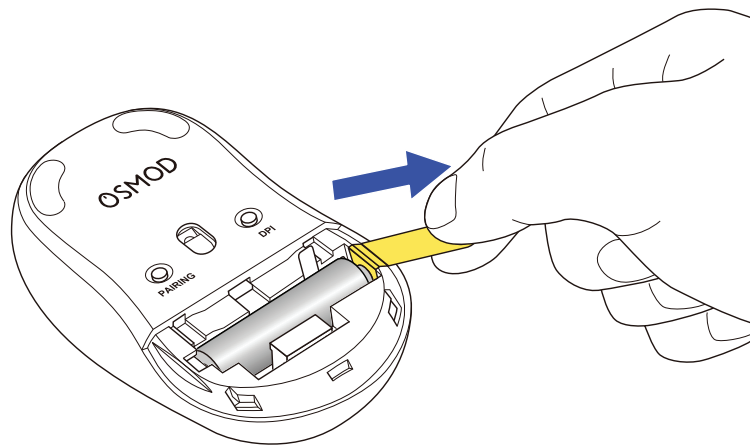
### 1. Remove the battery insulating tab.

#### 1) Remove the battery cover.

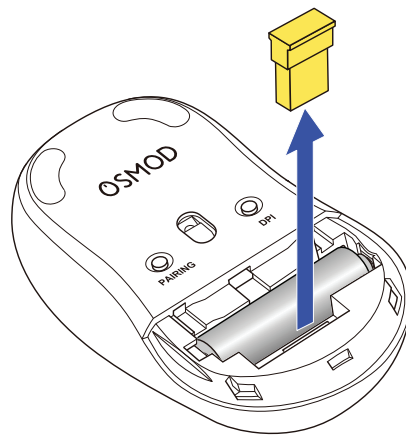




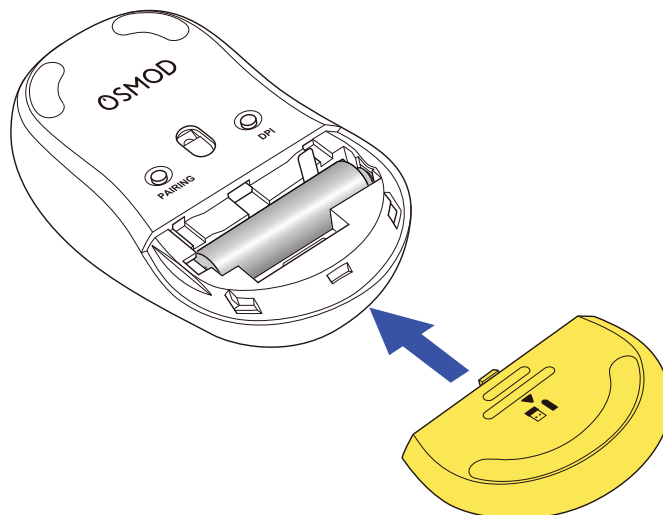
**2) Remove the battery insulating tab.**



**3) Remove the receiver unit.**

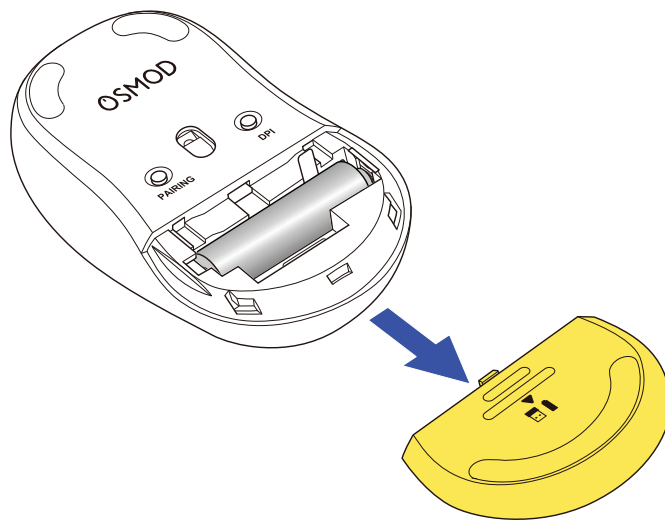


**4) Put the battery cover back on.**



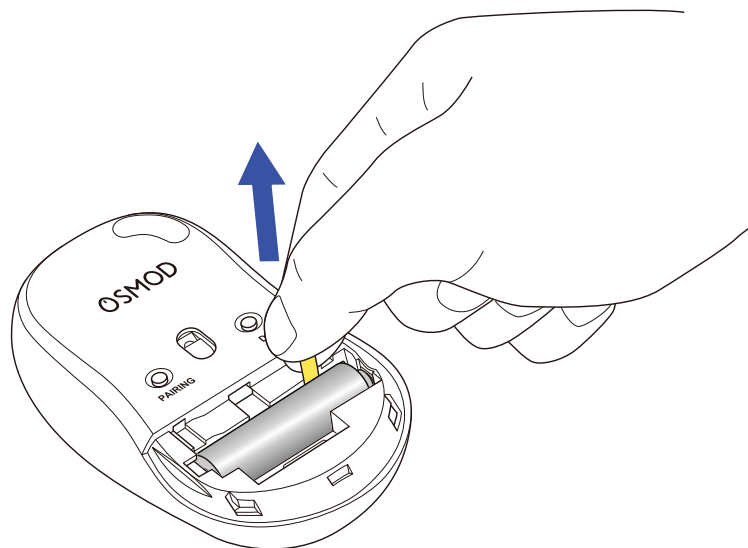
**Replacing the battery...**

**1) Remove the battery cover.**



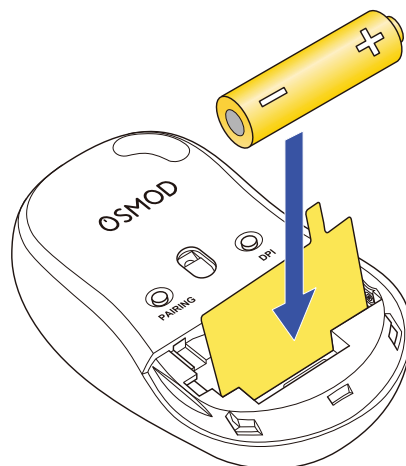
## 2) Remove the battery.

Pull the battery removal sheet to remove the battery.



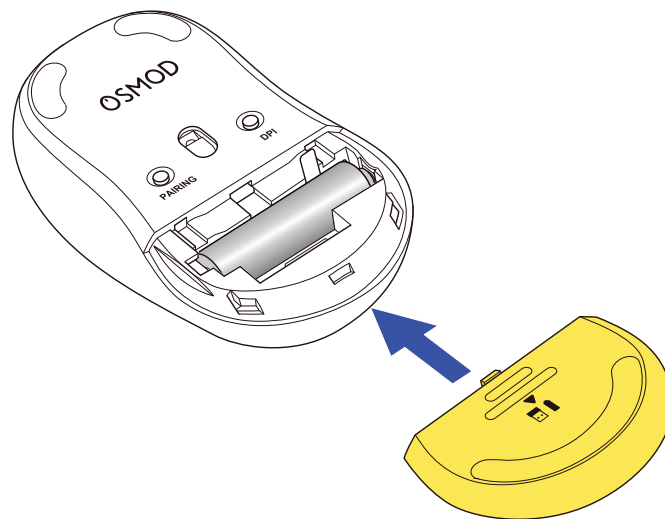
## 3) Insert the battery as instructed on the battery removal sheet.

Insert the battery in with the battery removal sheet below it.



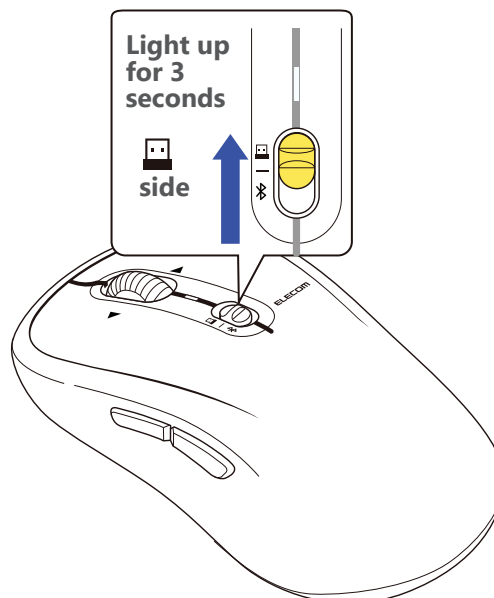
Ensure that the battery is inserted with the positive (+) and negative (-) terminals oriented correctly.

#### 4) Put the battery cover back on.



## 2. Turn the power ON

### 1) Slide the power/connection switch of the product to the position.



The LED lights up white for 3 seconds.

\*When the battery is running low, the LED will blink red.



#### **Power-saving mode**

When the mouse is left untouched for a fixed period of time while the power is on, it automatically shifts to power-saving mode.

The mouse returns from power-saving mode when it is moved.

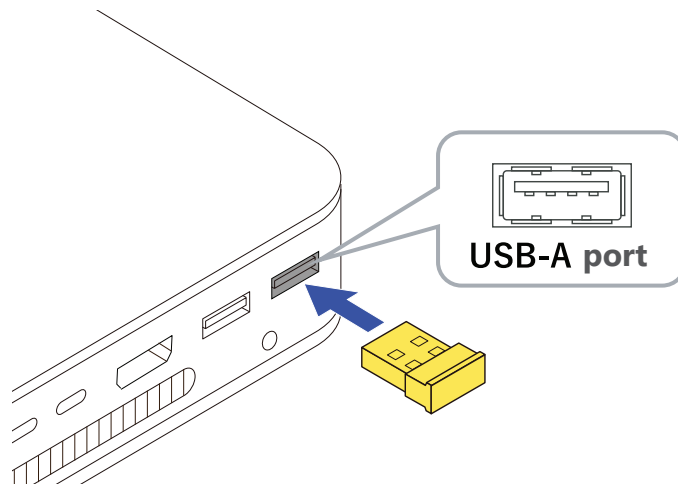
\*Mouse operation may be unstable for 2-3 seconds after returning from the power-saving mode.

## 3. Connect to a PC

### 1) Start up your PC.

Please wait until the PC has started up and can be operated.

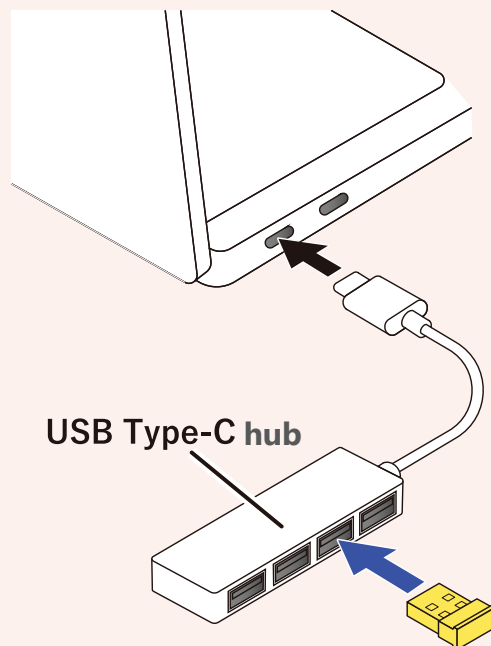
## 2) Insert the receiver unit into the PC's USB-A port.



You may use any USB-A port.



▪ For devices that do not have a USB-A port, please use a USB Type-C® hub.



- Ensure that the connector is correctly oriented to the port.
- If there is strong resistance when inserting, check the shape and orientation of the connector. Forcibly inserting the connector may damage the connector, and there is a risk of injury.
- Do not touch the terminal portion of the USB connector.



### When removing the receiver unit

This product supports hot plugging. The receiver unit can be removed while the PC is on.

## 3) The driver will be automatically installed, and you will then be able to use the mouse.

**You can now use the mouse.**

By downloading and installing the "ELECOM Mouse Assistant 6" from our company website, the button assignment function can be used. Please proceed to "[Install ELECOM Mouse Assistant 6](#)".

## Change the mouse pointer speed

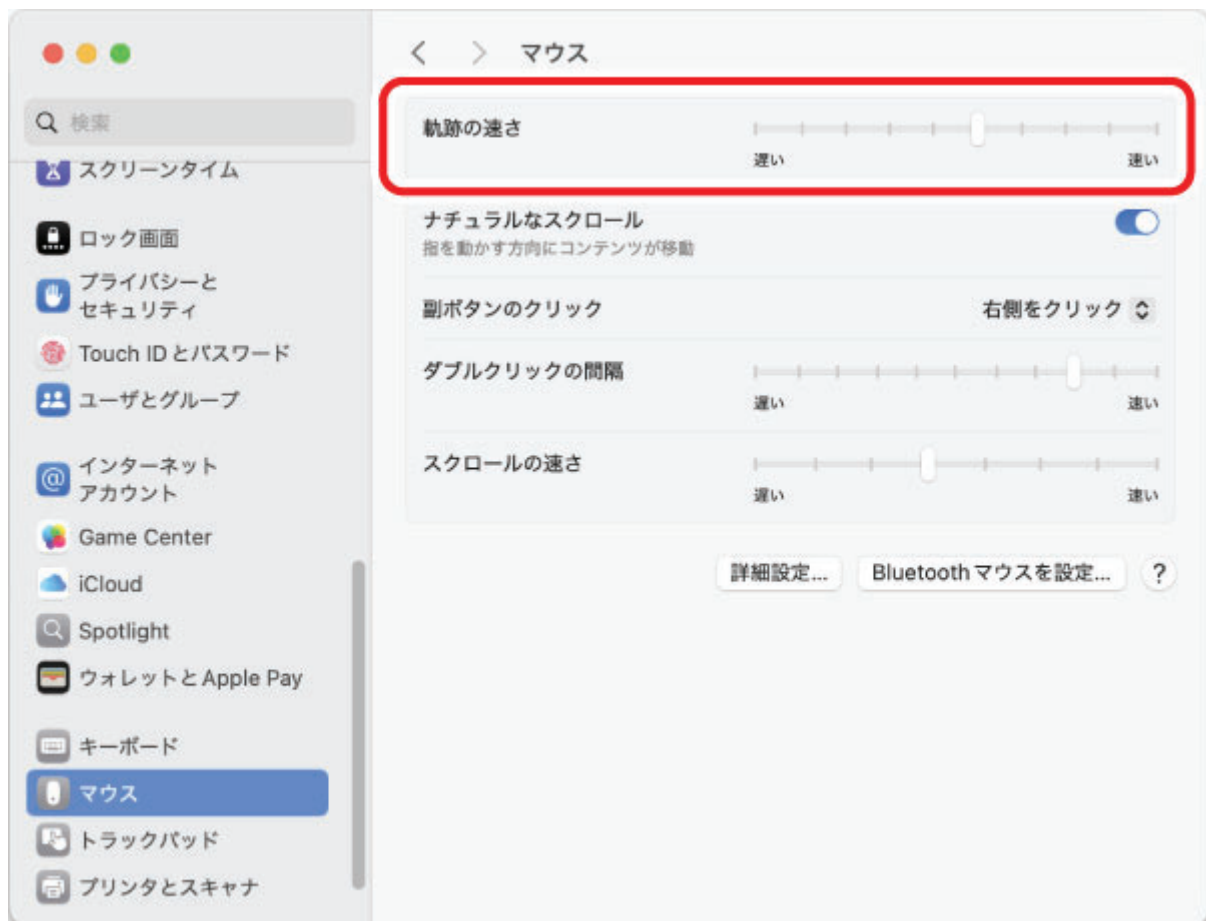
Adjust the mouse pointer movement speed on your PC if the mouse pointer moves too fast or too slow.

### 1) Select "Mouse" under "System Settings".

The "Mouse" settings page will load up.



### 2) Adjust the "Tracking speed" slider to adjust the speed of the mouse pointer.



## Change scroll direction

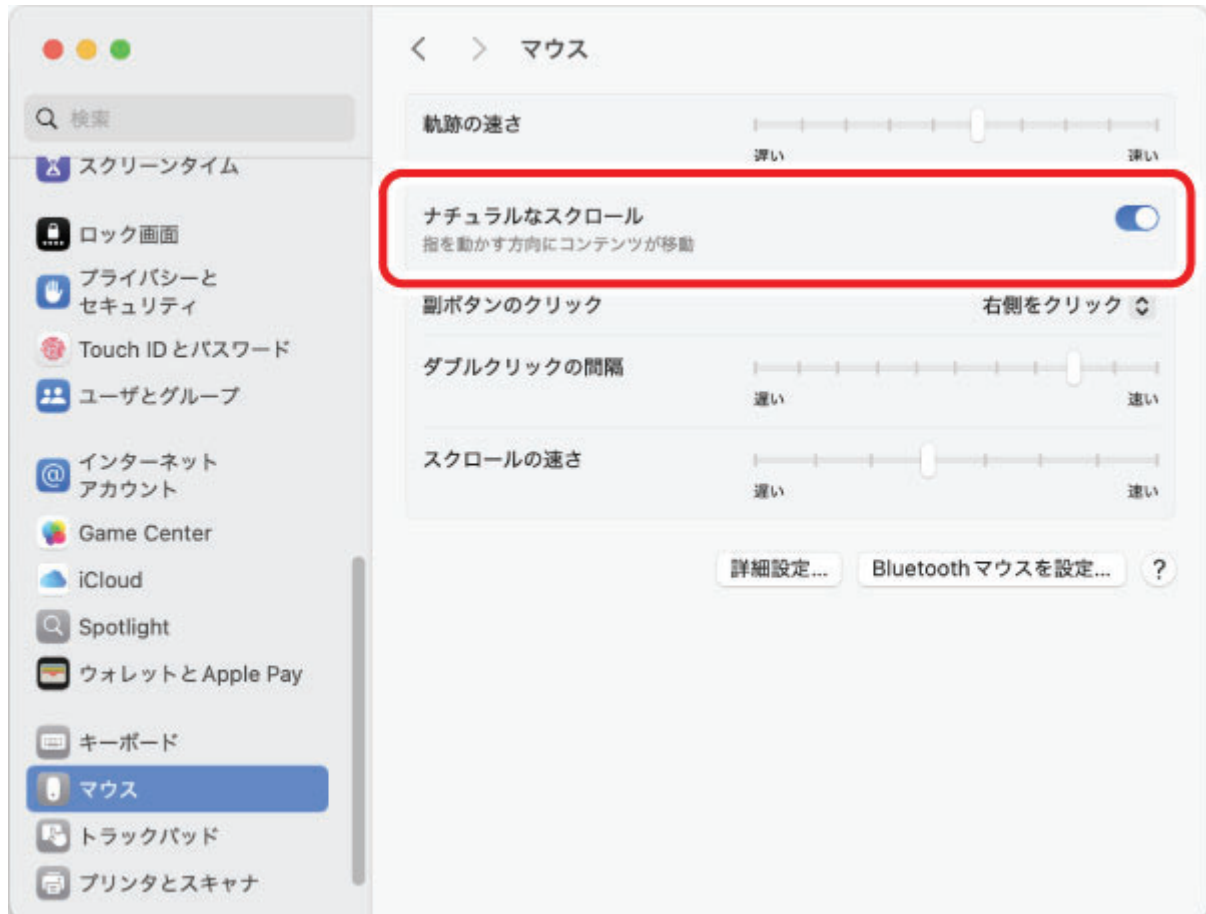
Change the scroll direction for when the scroll wheel on the mouse is moved.

### 1) Select "Mouse" under "System Settings".

The "Mouse" settings page will load up.



2) Clicking “Natural scrolling” to turn it on or off will change the scroll direction



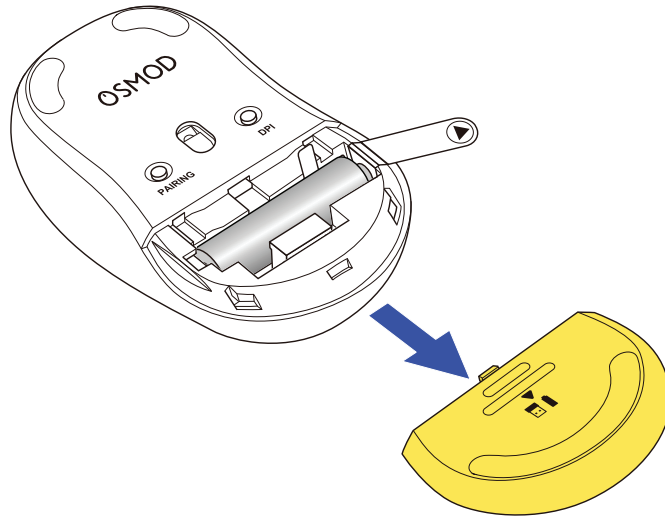
Unchecking “Natural scrolling” will cause the scroll direction to be reversed.

Using Bluetooth connection

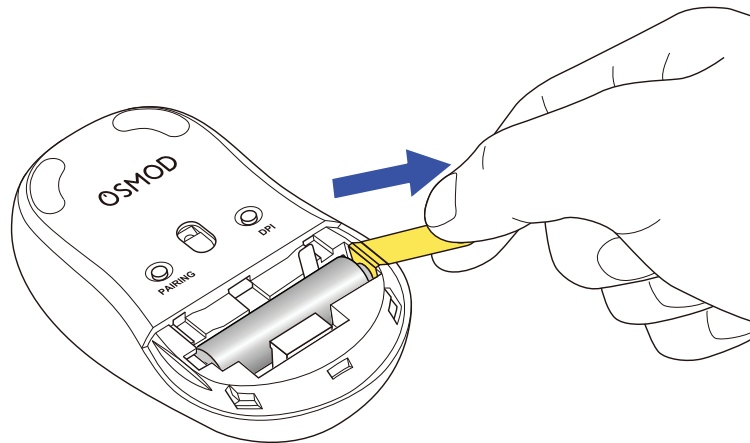


**1. Remove the battery insulating tab.**

1) Remove the battery cover.

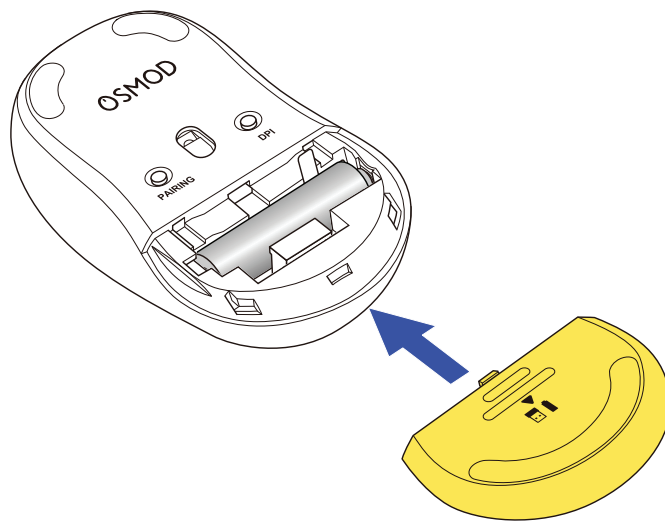


2) Remove the battery insulating tab.



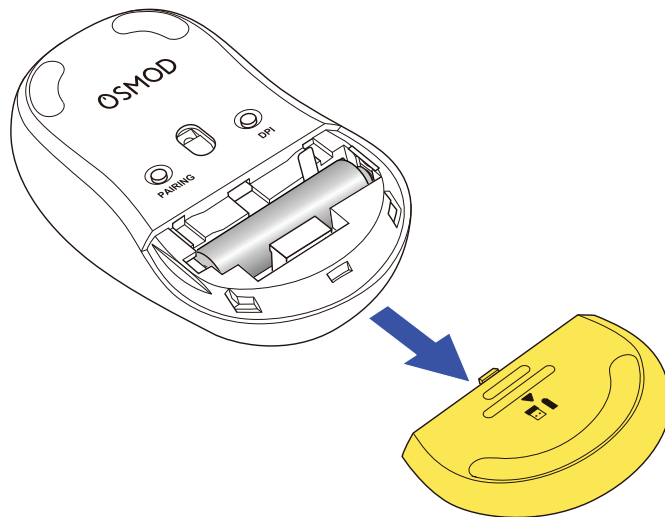
3) Put the battery cover back on.





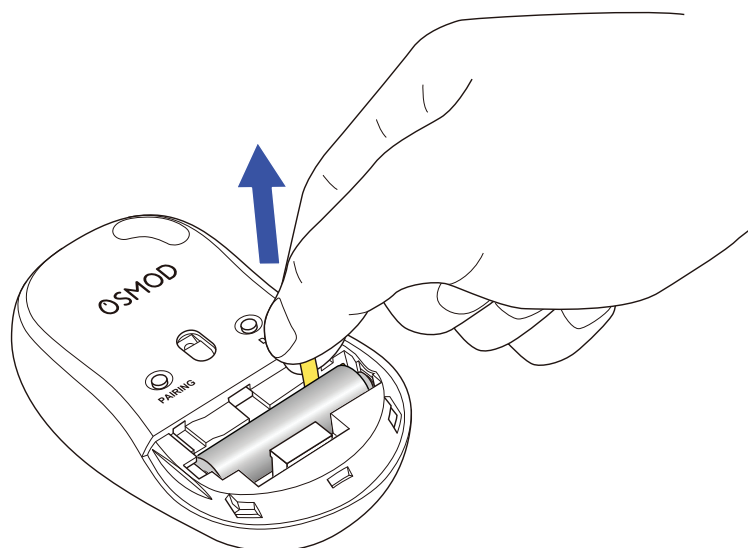
## Replacing the battery...

### 1) Remove the battery cover.



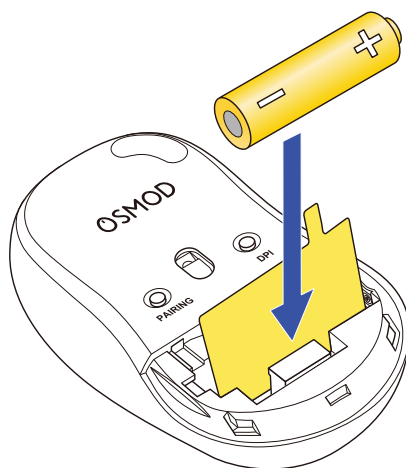
### 2) Remove the battery.

Pull the battery removal sheet to remove the battery.



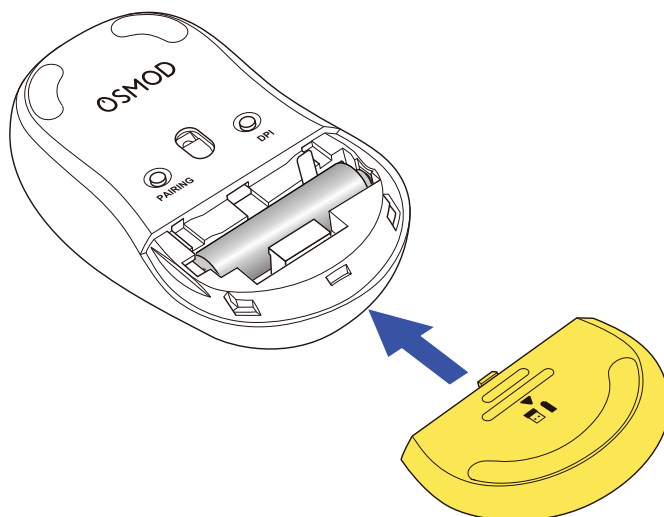
### 3) Insert the battery as instructed on the battery removal sheet.

Insert the battery in with the battery removal sheet below it.



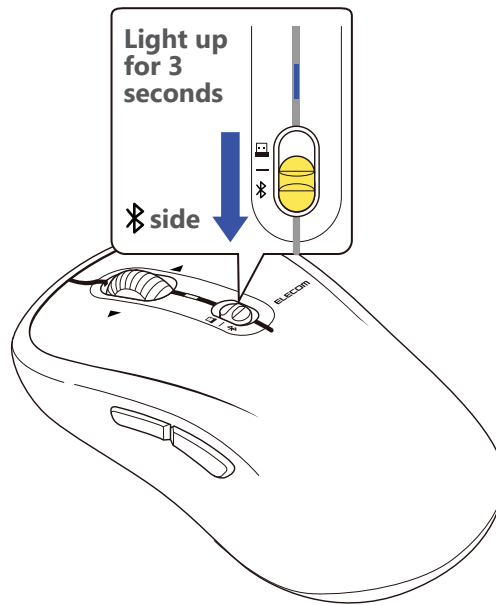
Ensure that the battery is inserted with the positive (+) and negative (-) terminals oriented correctly.

#### 4) Put the battery cover back on.



## 2. Turn the power ON

1) Slide the power/connection switch of the product to the  position.



The LED lights up blue for 3 seconds.

\*When the battery is running low, the LED will blink red.

- **When the power/connection switch is slid to  for the first time**

Pairing mode will be activated and the LED lamp will blink blue.



#### **Power-saving mode**

When the mouse is left untouched for a fixed period of time while the power is on, it automatically shifts to power-saving mode.

The mouse returns from power-saving mode when it is moved.

\*Mouse operation may be unstable for 2-3 seconds after returning from the power-saving mode.

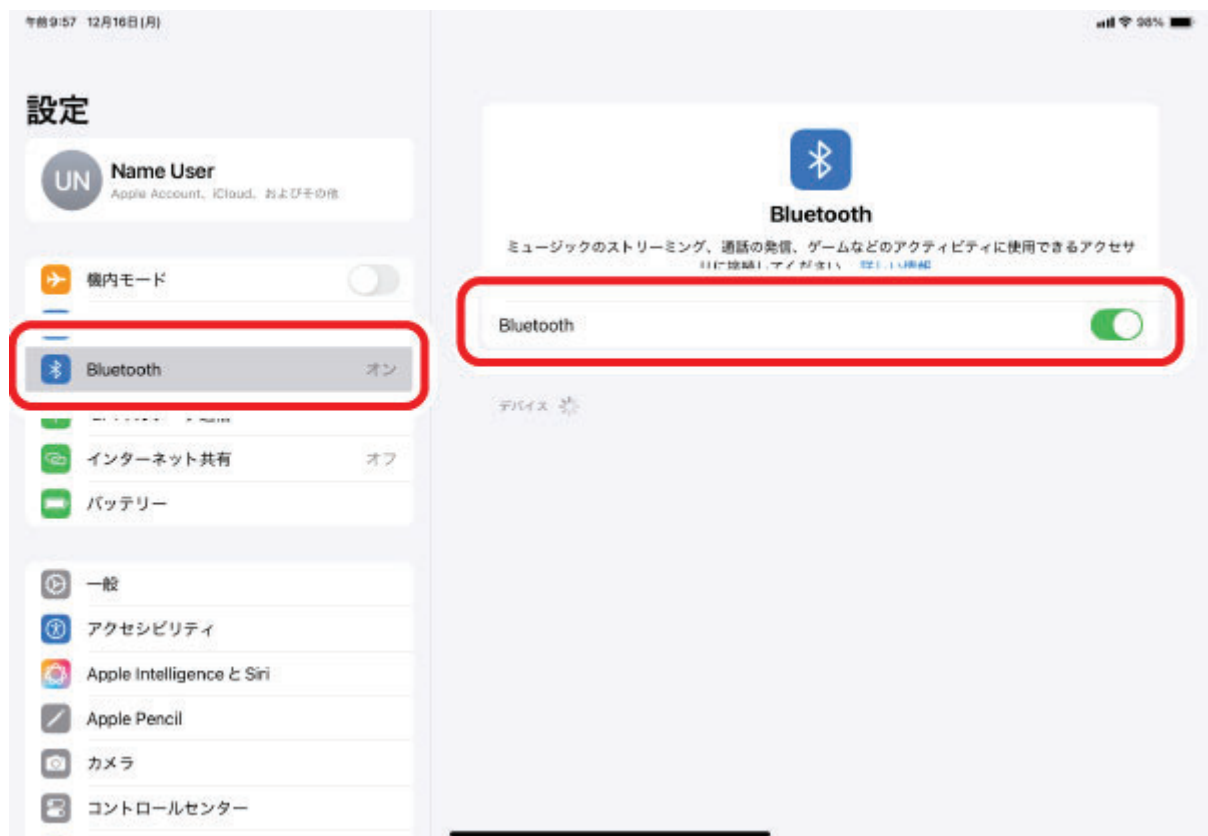
### **3. Pairing with an iPad or an iPhone**

- Pairing involves registering Bluetooth devices (in this case, this product and an iPad or an iPhone) with each other, and authorizing a connection between them.
- Tap to operate the iPad or iPhone device until pairing is complete.
- The following instructions are for iPadOS 18.

#### **1) Select “Settings” from the home page.**



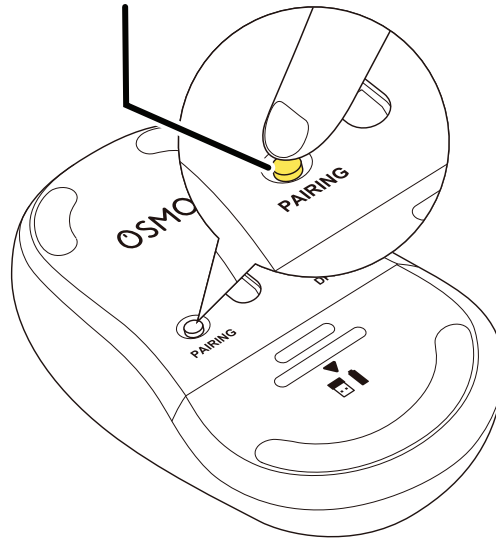
2) Select "Bluetooth" to turn on the "Bluetooth".



3) During the device search, hold down the PAIRING button on the underside of this product for 3 seconds and then release.

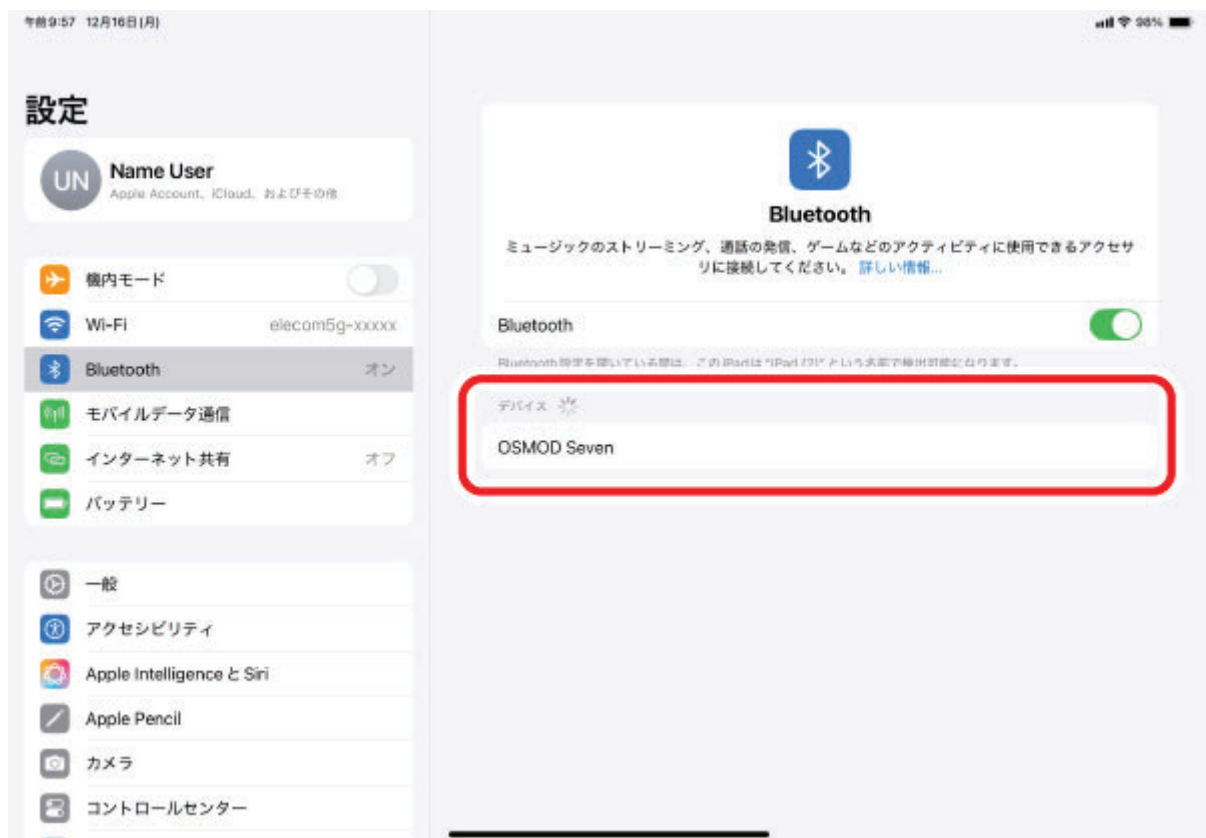
Pairing mode will be activated and the LED lamp will blink blue.

**PAIRING button**

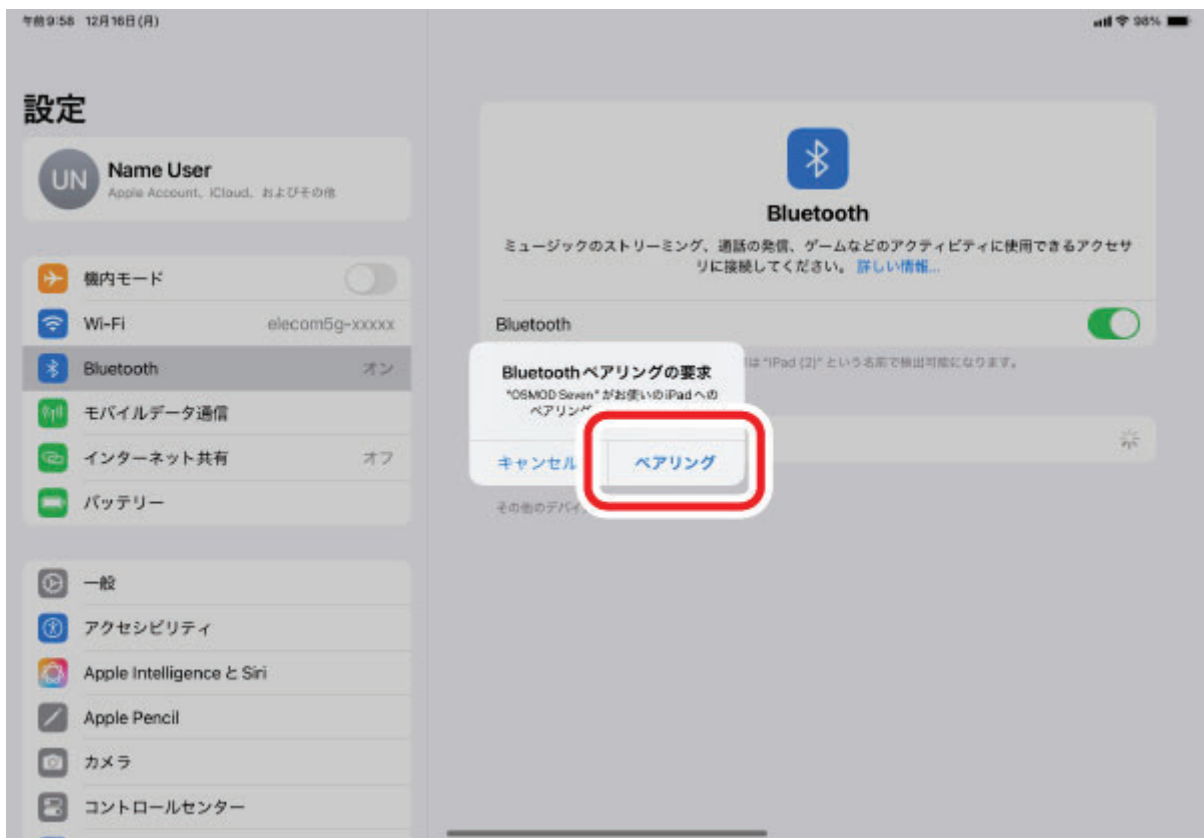


**4) Select “OSMOD Seven” when it is detected under “DEVICES”.**

Pairing begins.

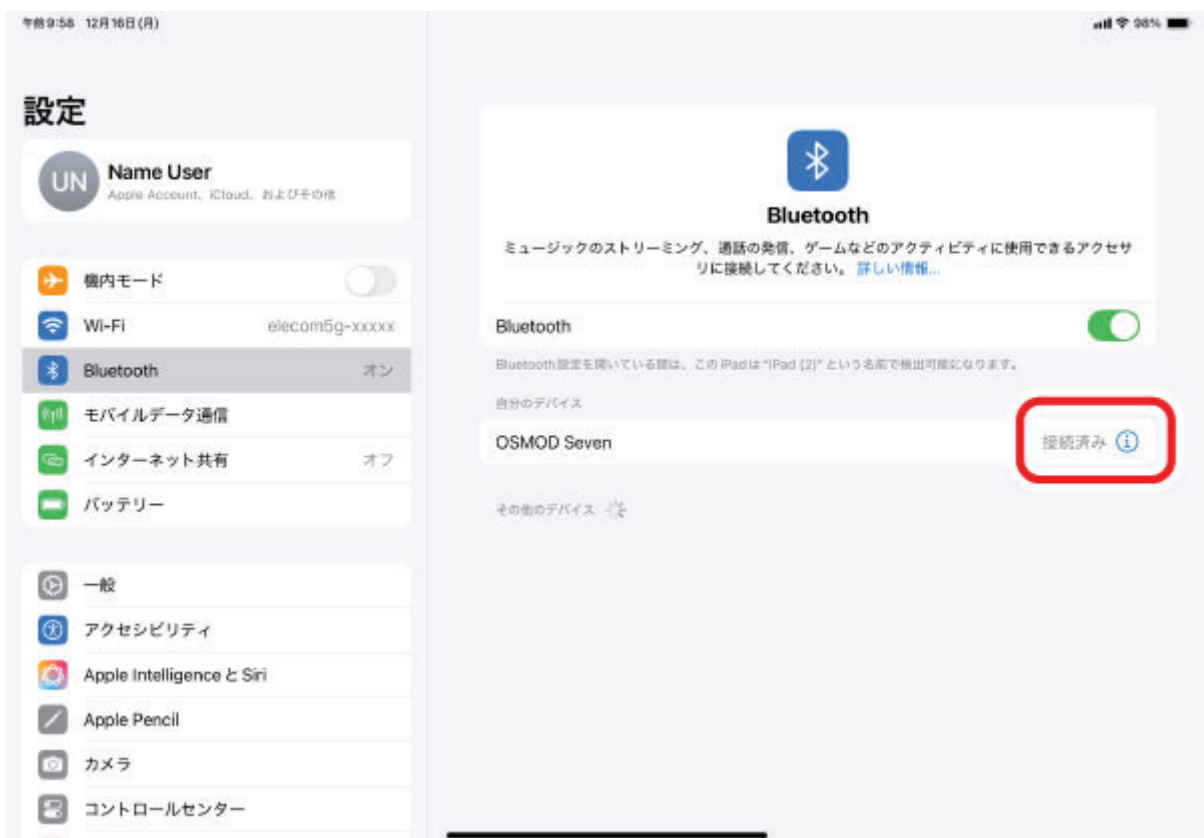


**5) When the “Bluetooth Pairing Request” page loads, select “Pair”.**



## 6) You can use the mouse when the status shows "Connected"

The LED light will turn on for 3 seconds then turn off.

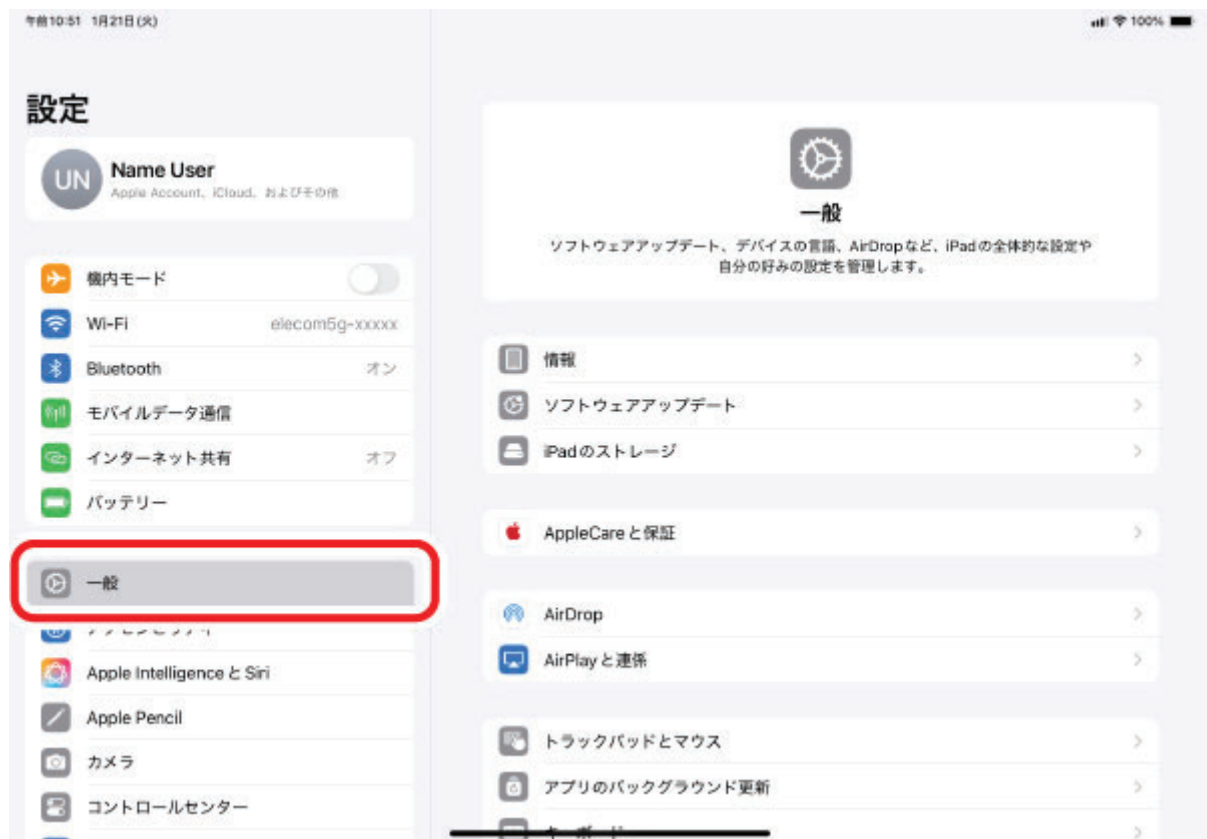


You can now use the mouse.

## Change scroll direction

Change the scroll direction for when the scroll wheel on the mouse is moved.

1) Select “General” under “Settings” from the home page.



2) Tap on “Trackpad & Mouse”.



### 3) Tapping “Natural scrolling” to turn it on or off will change the scroll direction.



When “Natural scrolling” is turned off, the scroll direction will be the same as the direction of the scroll wheel movement.

## Register custom actions to the buttons.

Only the 2 buttons and the wheel can be used under the initial settings.

- Button 1: Single-Tap
- Button 2: Secondary Click

Follow the steps below to assign all other button functions.

## 1. Turn ON AssistiveTouch.

1) Select “Accessibility” under “Settings”.

2) Select “Touch”.

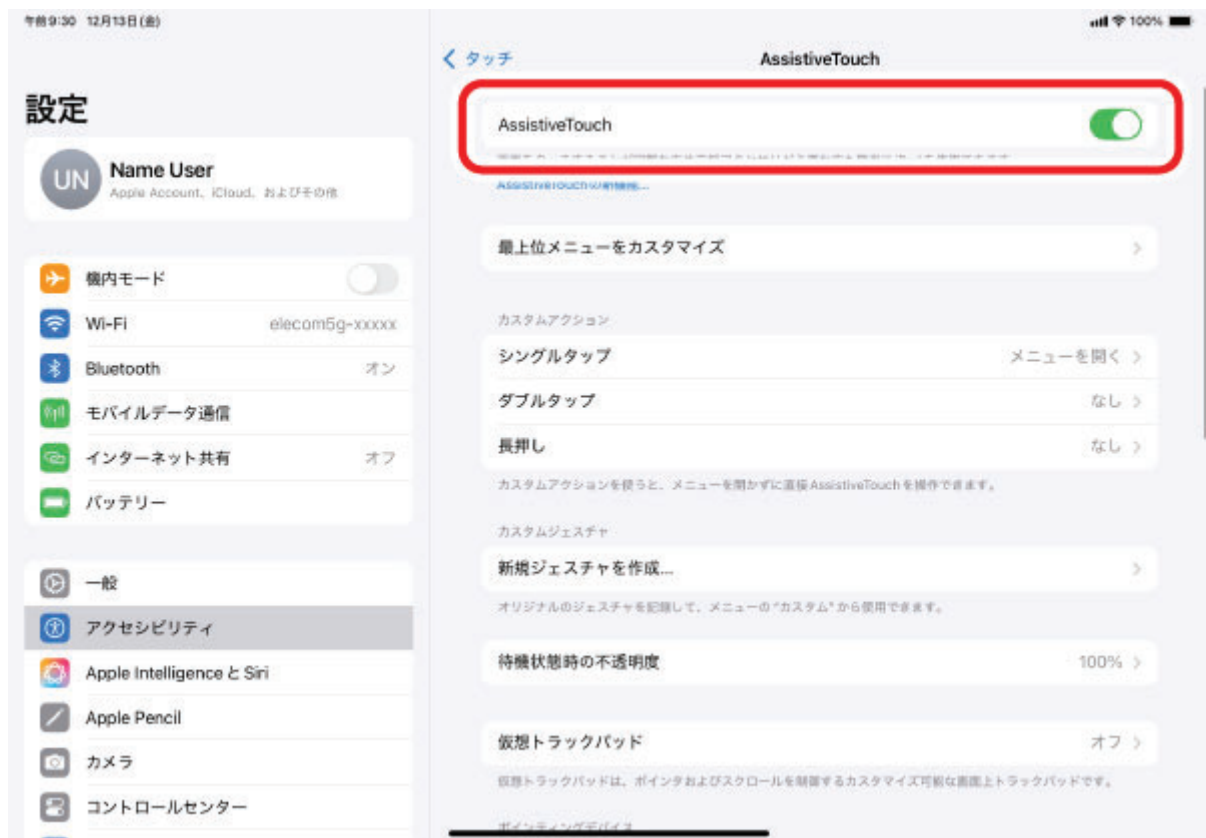




### 3) Select “AssistiveTouch”.

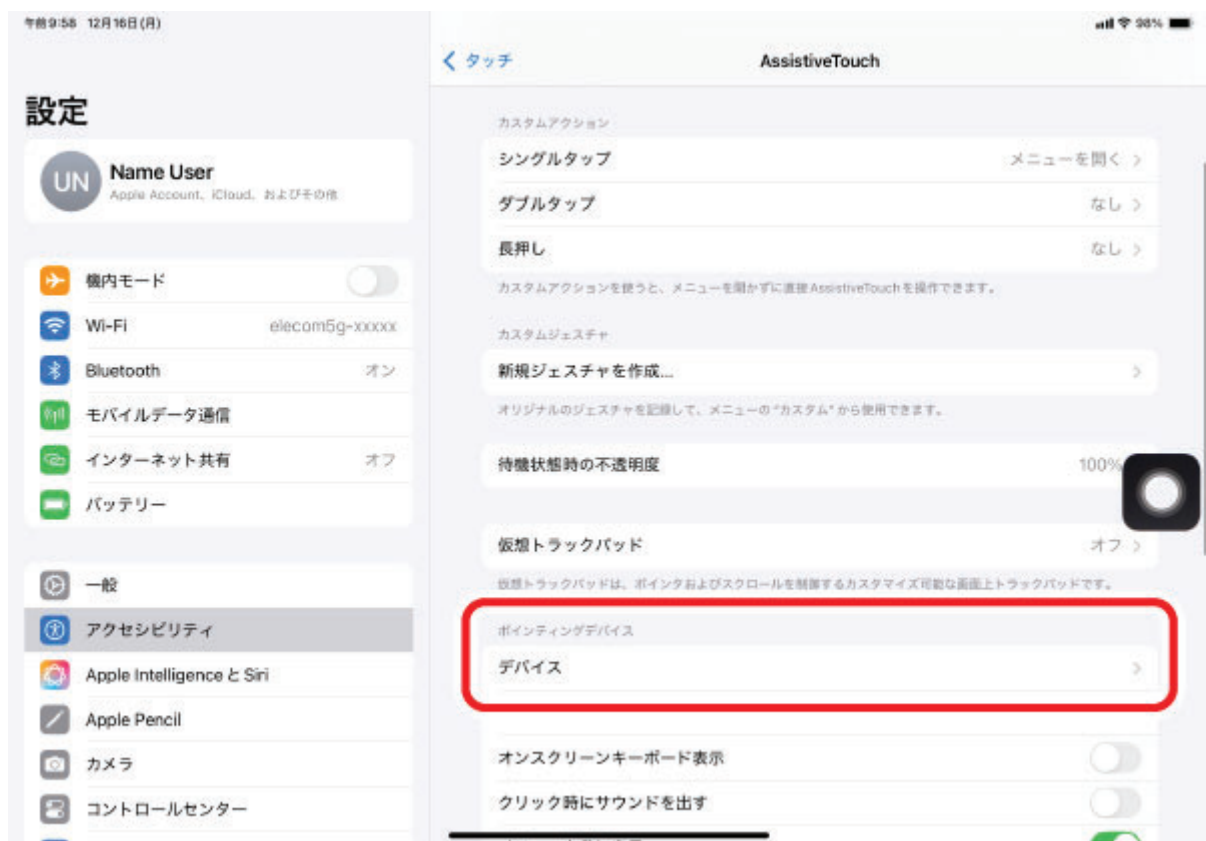


### 4) Select “AssistiveTouch” to turn ON.

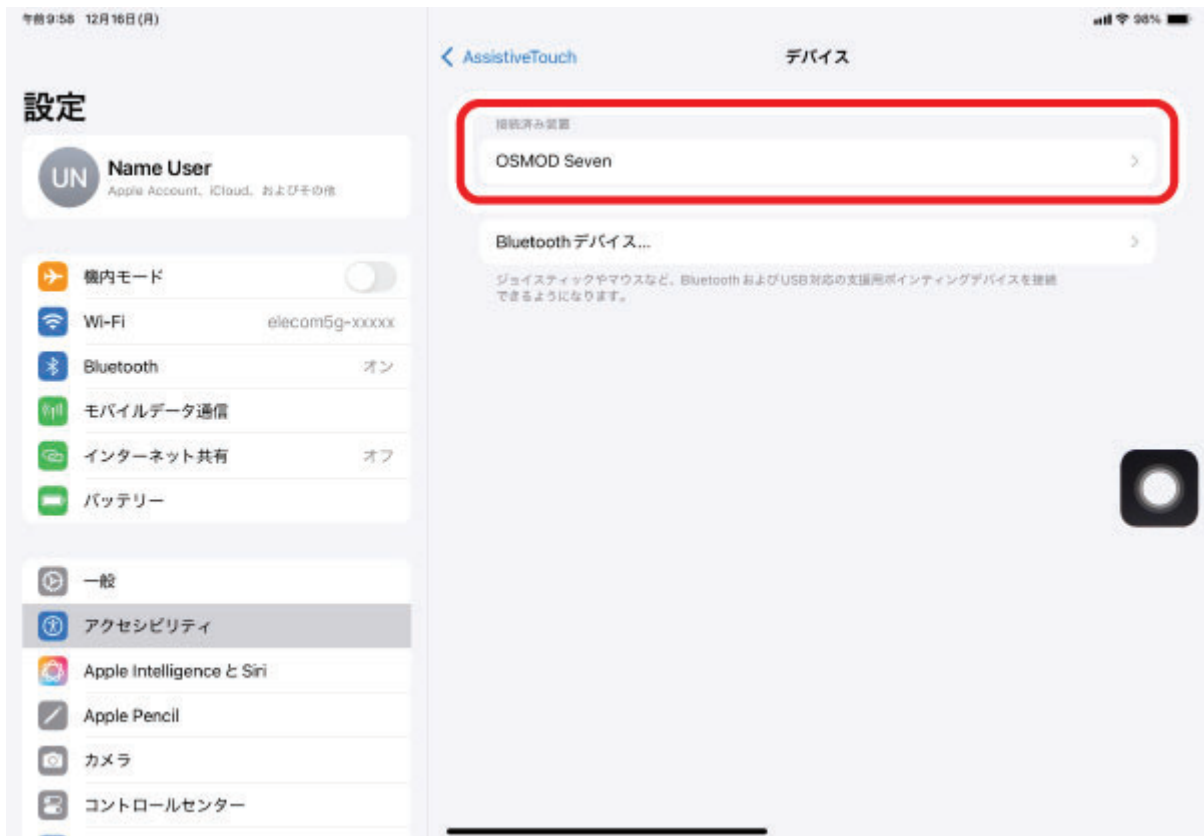


## 2. Assign custom actions to the buttons.

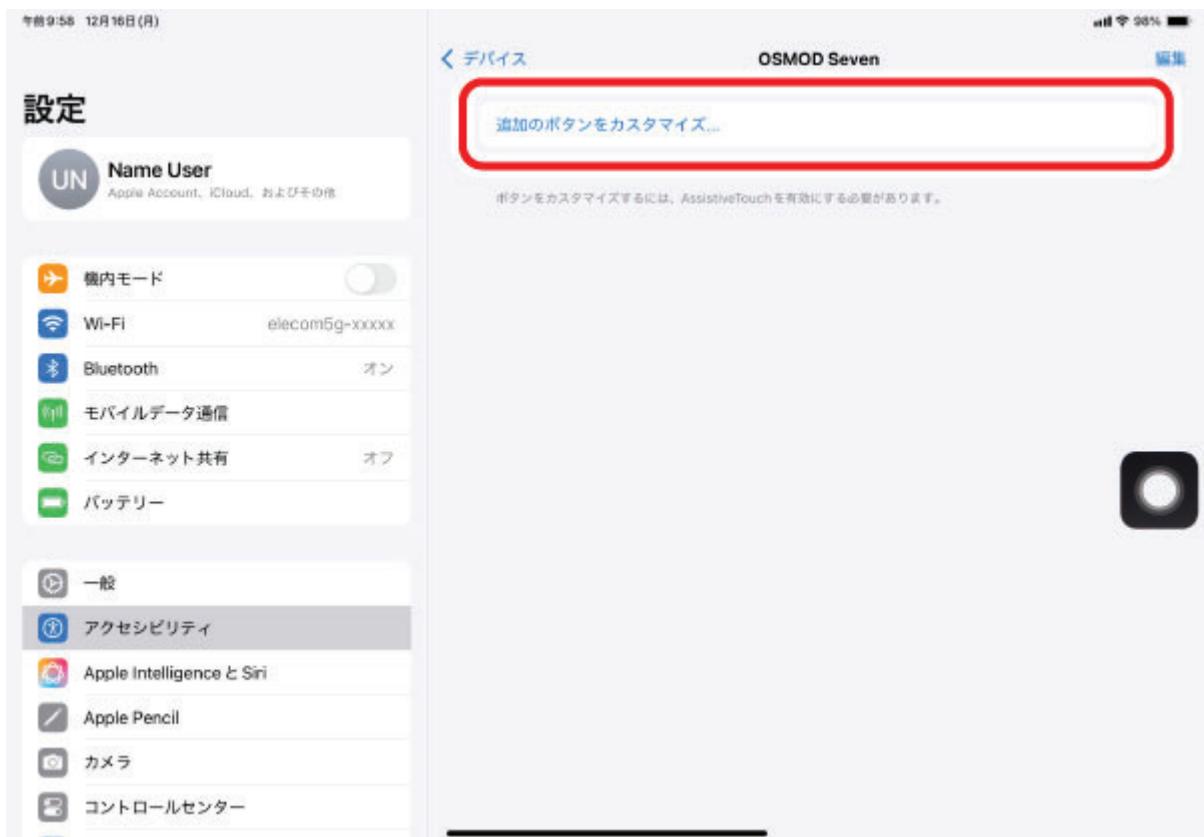
### 1) Select "Devices" under "POINTER DEVICES".



### 2) Tap on "OSMOD Seven".



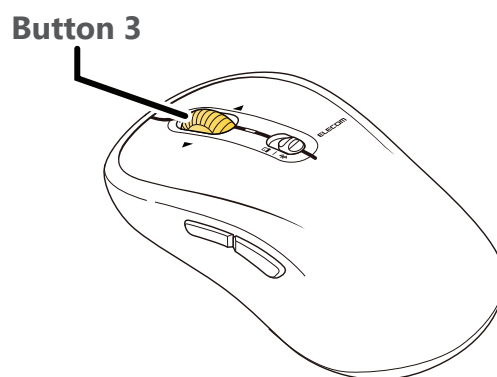
3) Select “Customize Additional Buttons...”.



4) When the “Customize Button” page loads, click on the button on this product that you would like to assign an action to.



\*When adding an action to "Button 3"

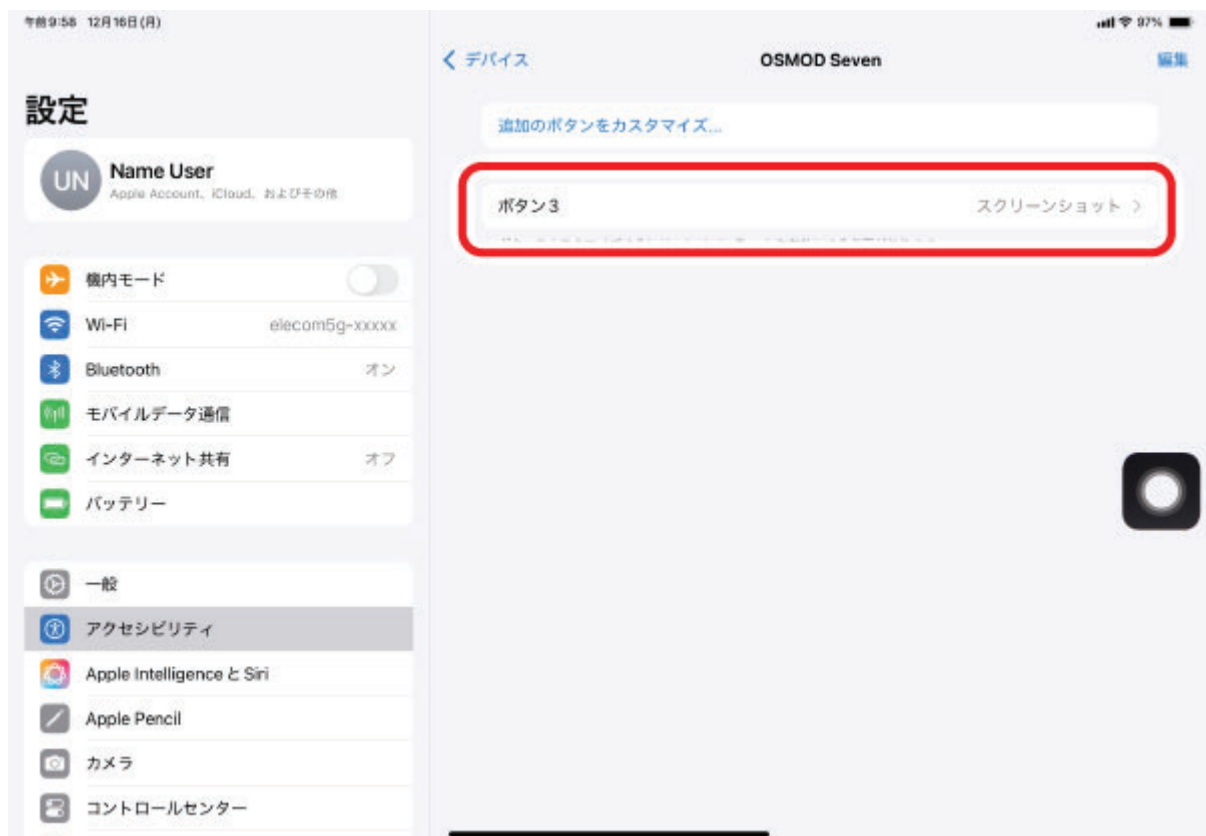


**5) A list of all assignable functions will load. Select the desired function to assign.**

\*When assigning "Screenshot" to "Button 3".



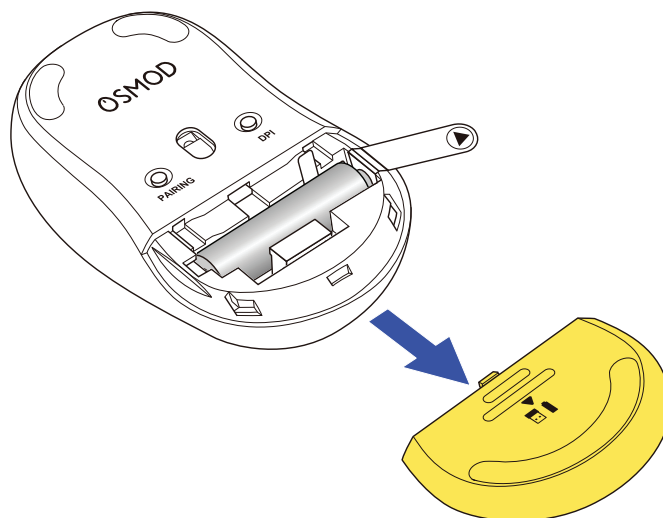
6) A function is assigned to the button. To assign other buttons, repeat the steps above.



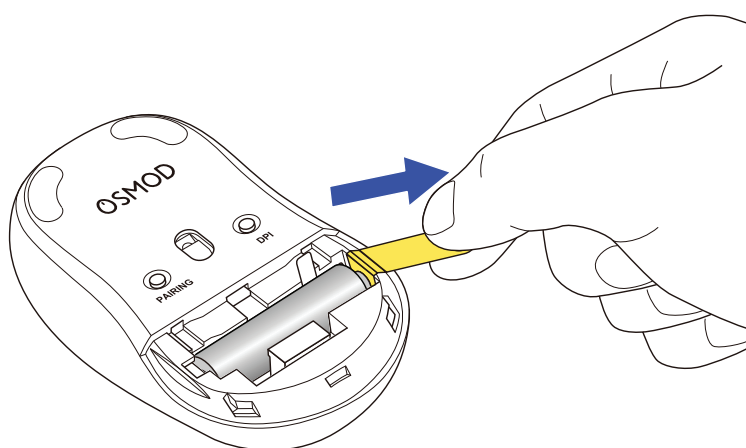
When AssistiveTouch is OFF, the Custom Action function is disabled and only the initial right click, left click and wheel scroll functions may be used.

### 1. Remove the battery insulating tab.

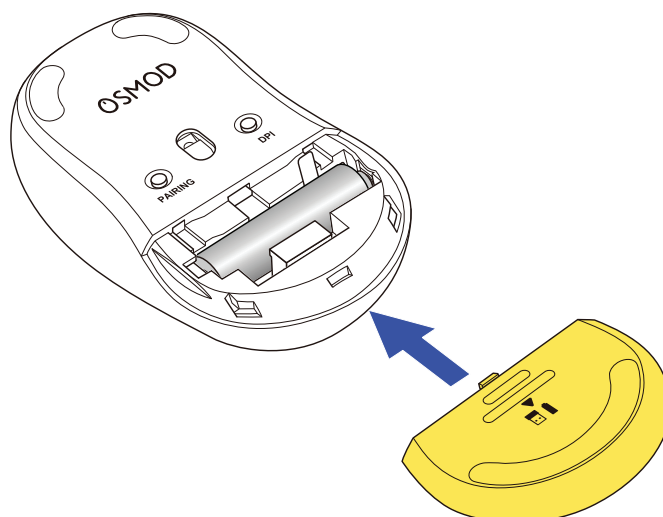
1) Remove the battery cover.



2) Remove the battery insulating tab.

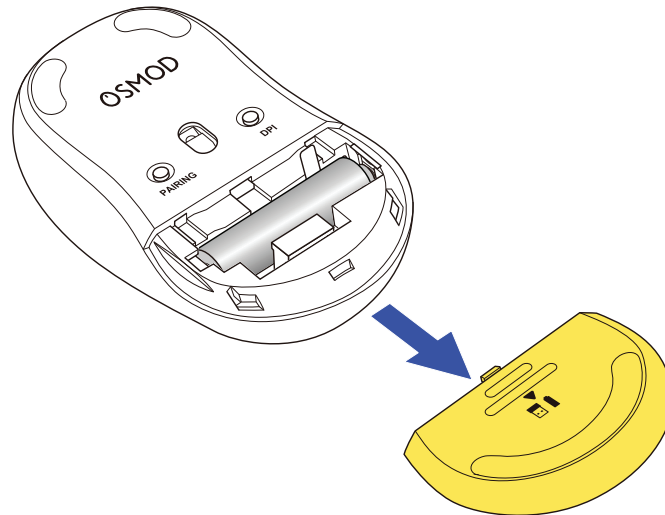


3) Put the battery cover back on.



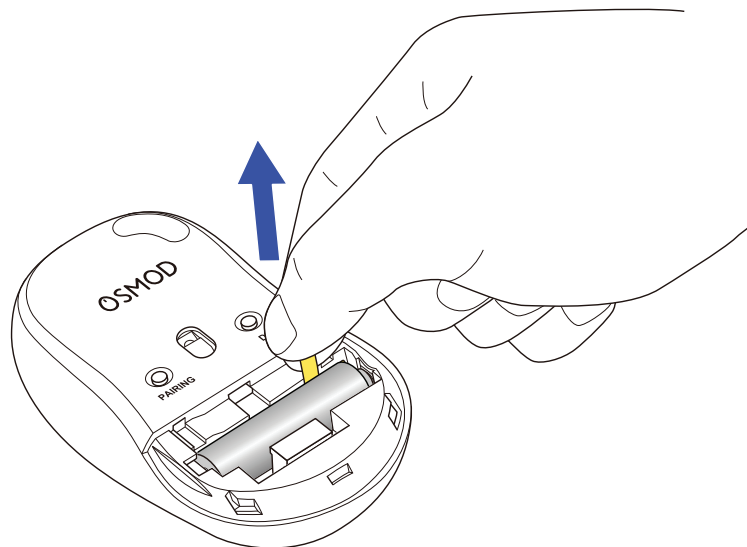
## Replacing the battery...

### 1) Remove the battery cover.



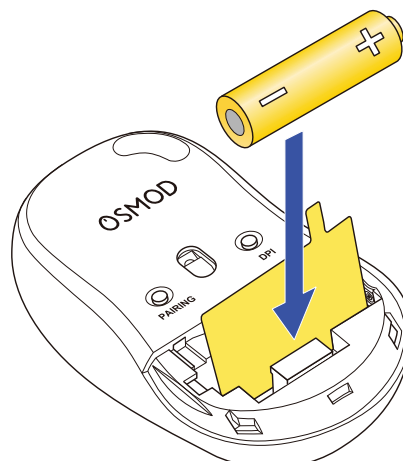
### 2) Remove the battery.

Pull the battery removal sheet to remove the battery.



### 3) Insert the battery as instructed on the battery removal sheet.

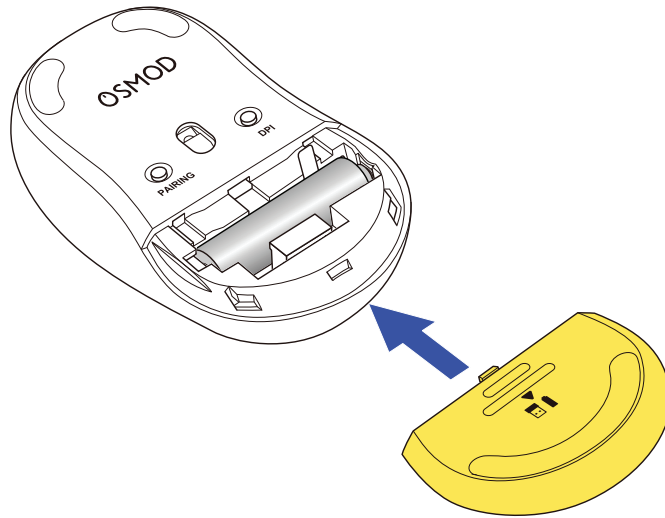
Insert the battery in with the battery removal sheet below it.





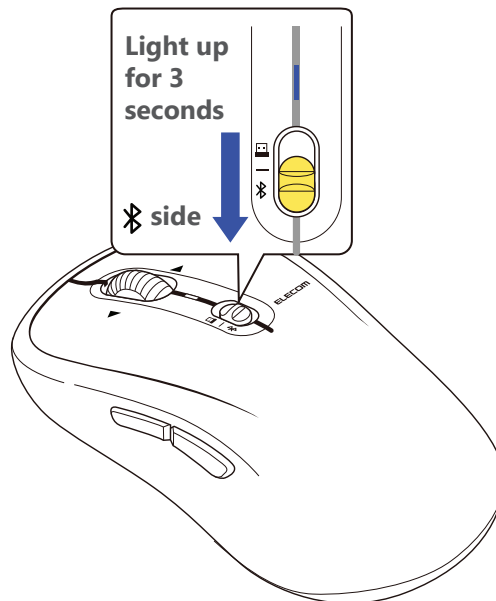
Ensure that the battery is inserted with the positive (+) and negative (-) terminals oriented correctly.

#### 4) Put the battery cover back on.



## 2. Turn the power ON

1) Slide the power/connection switch of the product to the  position.



The LED lights up blue for 3 seconds.

\*When the battery is running low, the LED will blink red.

• When the power/connection switch is slid to  for the first time

Pairing mode will be activated and the LED lamp will blink blue.



### Power-saving mode

When the mouse is left untouched for a fixed period of time while the power is on, it automatically shifts to power-saving mode.

The mouse returns from power-saving mode when it is moved.



\*Mouse operation may be unstable for 2-3 seconds after returning from the power-saving mode.

### 3. Pairing with an Android device.

- Pairing involves registering Bluetooth devices (in this case, this product and an Android device) with each other, and authorizing a connection between them.
- Tap to operate the Android device until pairing is complete.
- Instructions for the Pixel Tablet (Android 15) are as follows. There may be differences depending on the OS version or device.

1) Select “Settings” from the home page.

2) Select “Connected devices”.

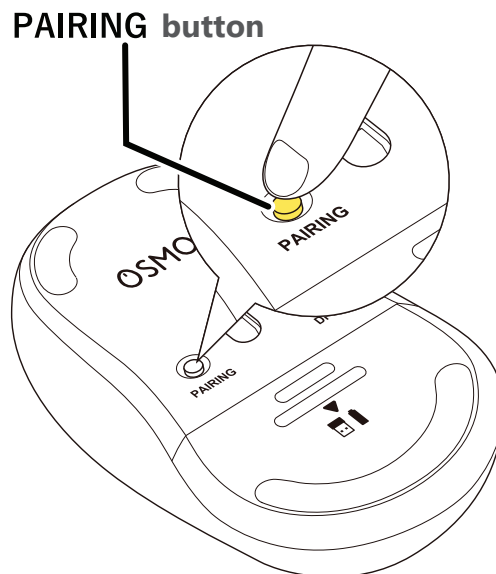


3) Select “Pair new device”

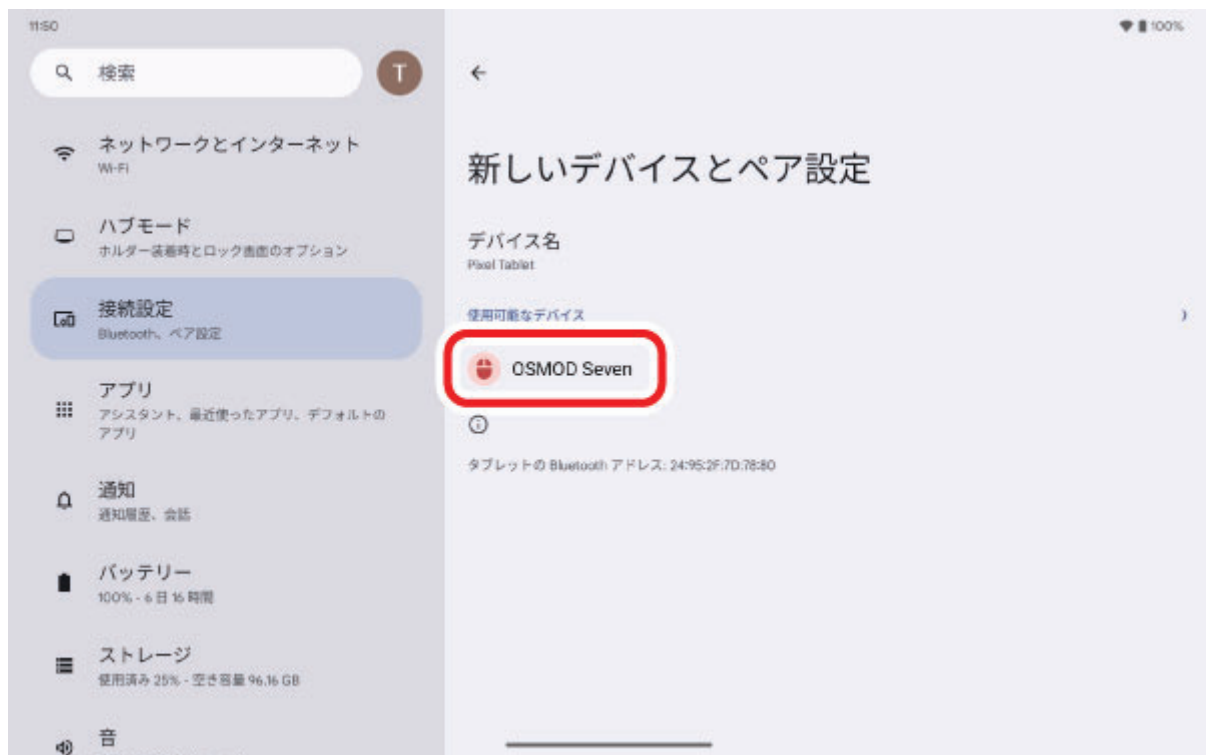


**4) Hold down the PAIRING button on the underside of this product for 3 seconds and then release.**

Pairing mode will be activated and the LED lamp will blink blue.



**5) Select "OSMOD Seven" under "Available devices".**



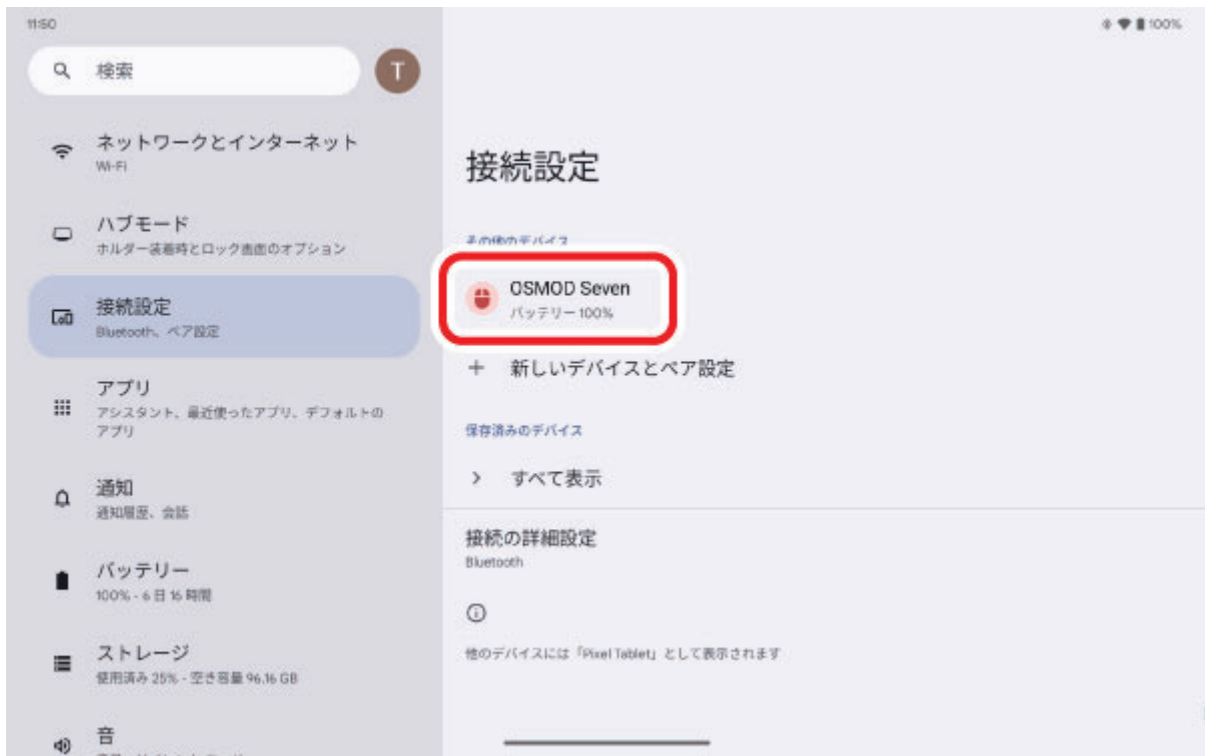
6) Tap on “Pair”.



Pairing begins.

7) Pairing is complete when this product is added to “Other devices”.

The LED light will turn on for 3 seconds then turn off.



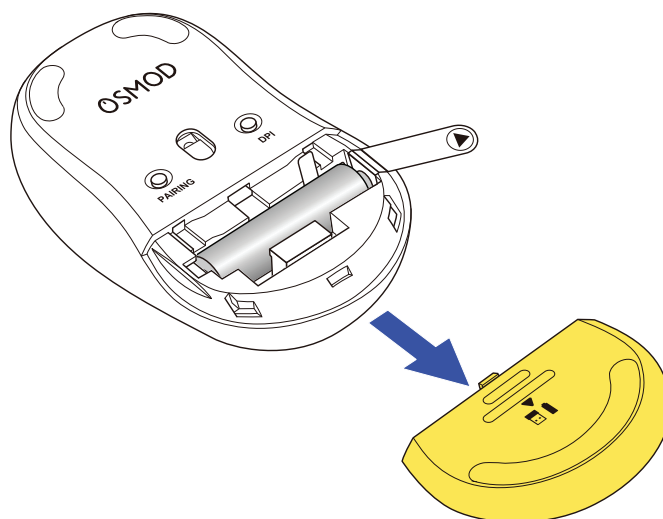
You can now use the mouse.

## Chrome OS

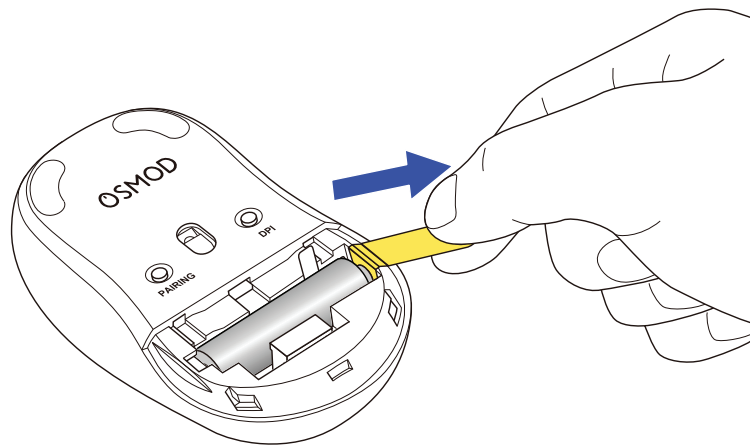
### Using Bluetooth connection

#### 1. Remove the battery insulating tab.

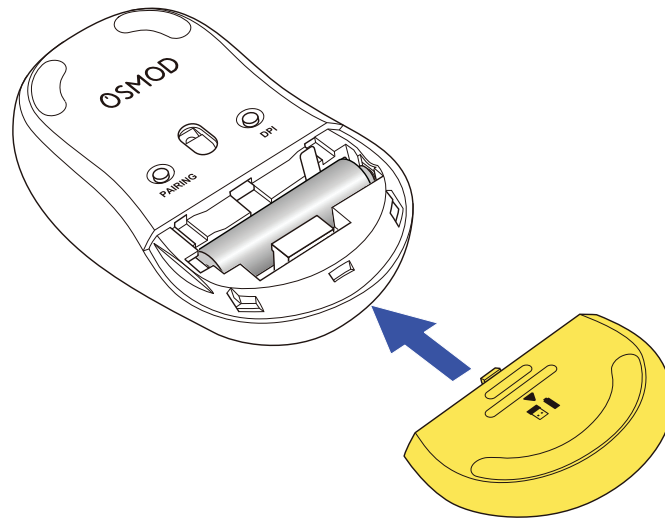
1) Remove the battery cover.



2) Remove the battery insulating tab.

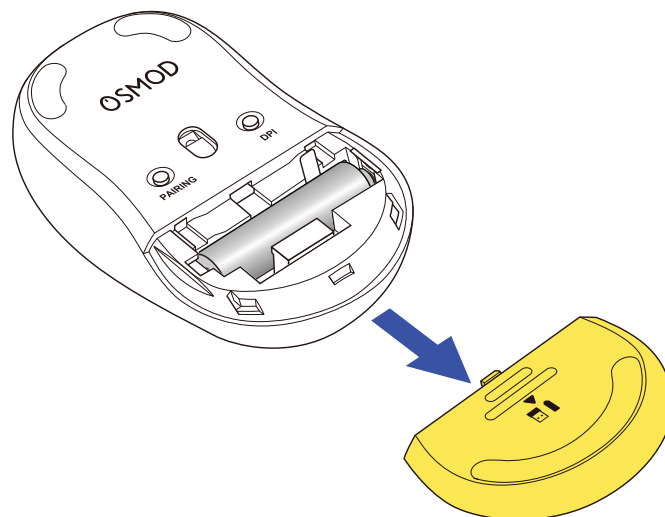


**3) Put the battery cover back on.**



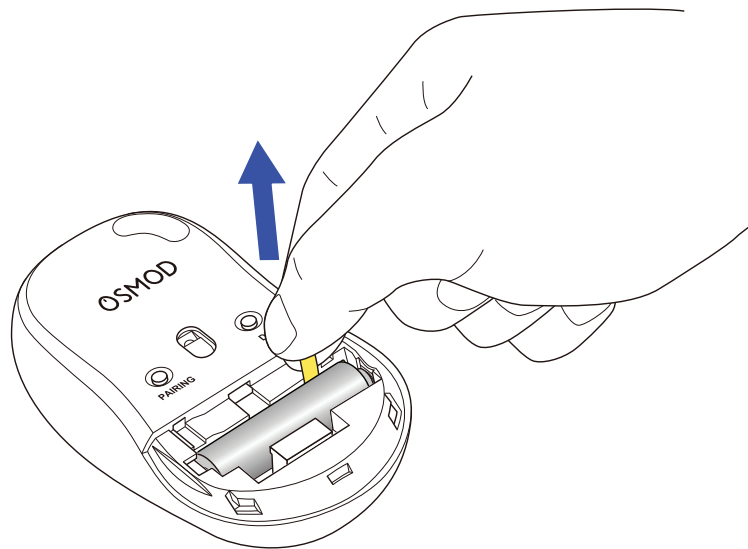
**Replacing the battery...**

**1) Remove the battery cover.**



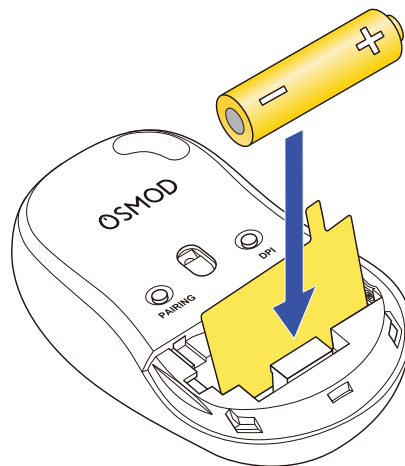
**2) Remove the battery.**

Pull the battery removal sheet to remove the battery.



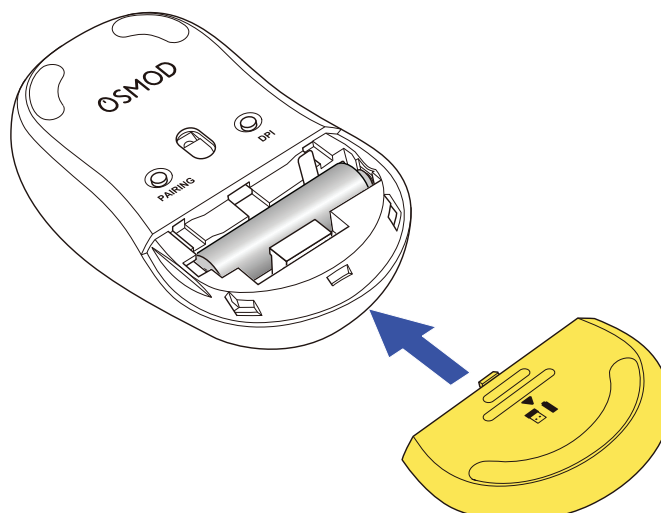
**3) Insert the battery as instructed on the battery removal sheet.**

Insert the battery in with the battery removal sheet below it.



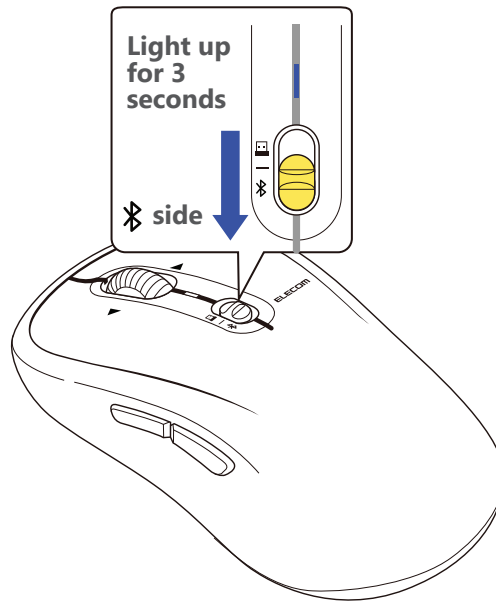
Ensure that the battery is inserted with the positive (+) and negative (-) terminals oriented correctly.

**4) Put the battery cover back on.**



## 2. Turn the power ON

1) Slide the power/connection switch of the product to the  position.



The LED lights up blue for 3 seconds.

\*When the battery is running low, the LED will blink red.

• **When the power/connection switch is slid to  for the first time**

Pairing mode will be activated and the LED lamp will blink blue.



### Power-saving mode

When the mouse is left untouched for a fixed period of time while the power is on, it automatically shifts to power-saving mode.

The mouse returns from power-saving mode when it is moved.

\*Mouse operation may be unstable for 2-3 seconds after returning from the power-saving mode.

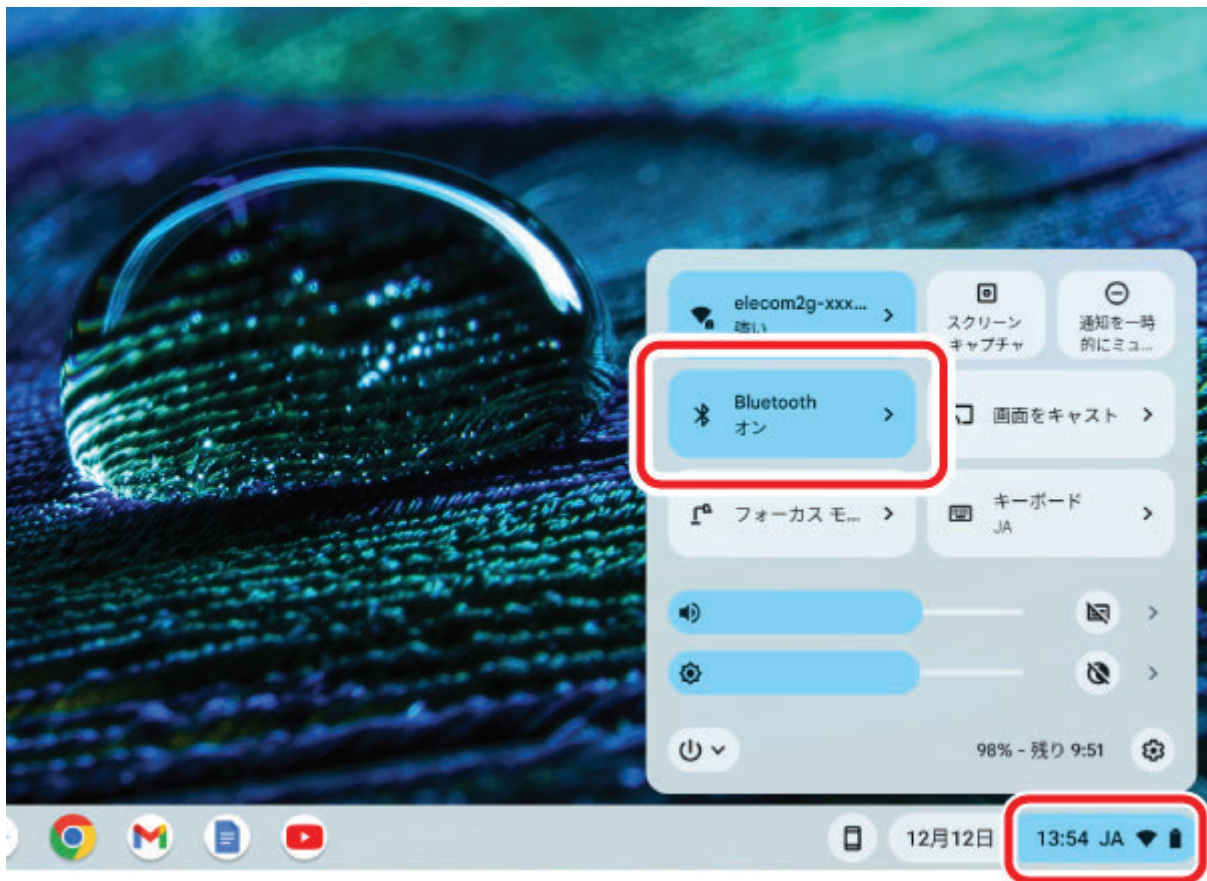
## 3. Pairing with a PC

- Pairing involves registering Bluetooth devices (in this case, this product and your device) with each other, and authorizing a connection between them.
- This section covers Chrome OS standard Bluetooth functions. Depending on your computer, unique Bluetooth functions may be used. Please read the respective manuals for each function.
- Use your current mouse or the touchpad on your device to operate your device until pairing is complete.
- The following instructions are for Chrome OS (130.0.6273.126).

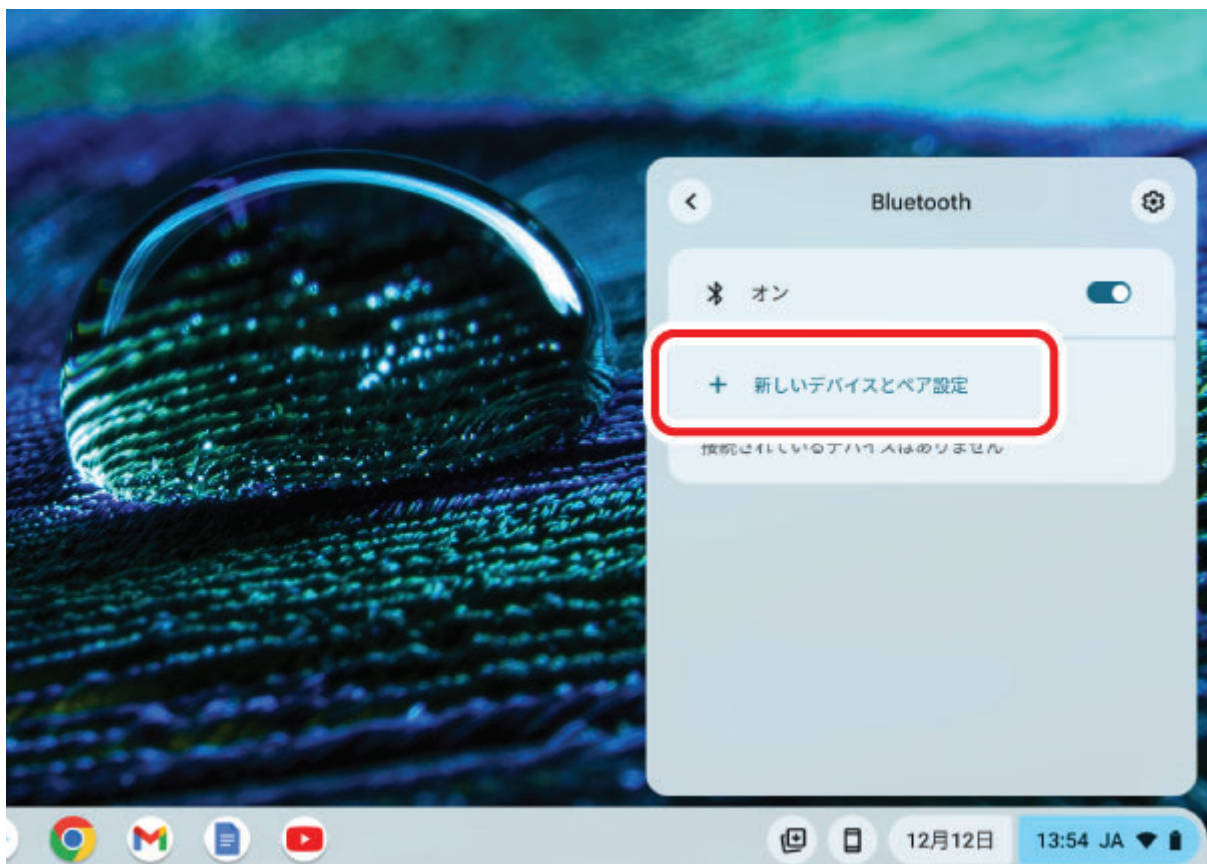
1) **Select the battery icon at the bottom right.**

2) **Click  Bluetooth on the Quick Settings panel.**





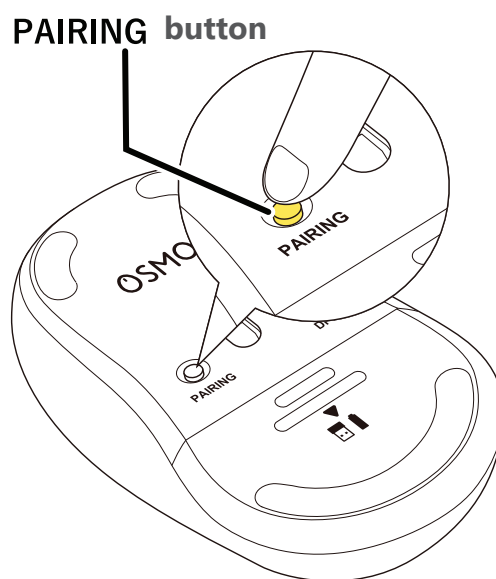
3) Under “Bluetooth”, select “Pair new device”.



4) During the device search, hold down the **PAIRING** button on the underside of this product for 3 seconds and then release.

Pairing mode will be activated and the LED lamp will blink blue.





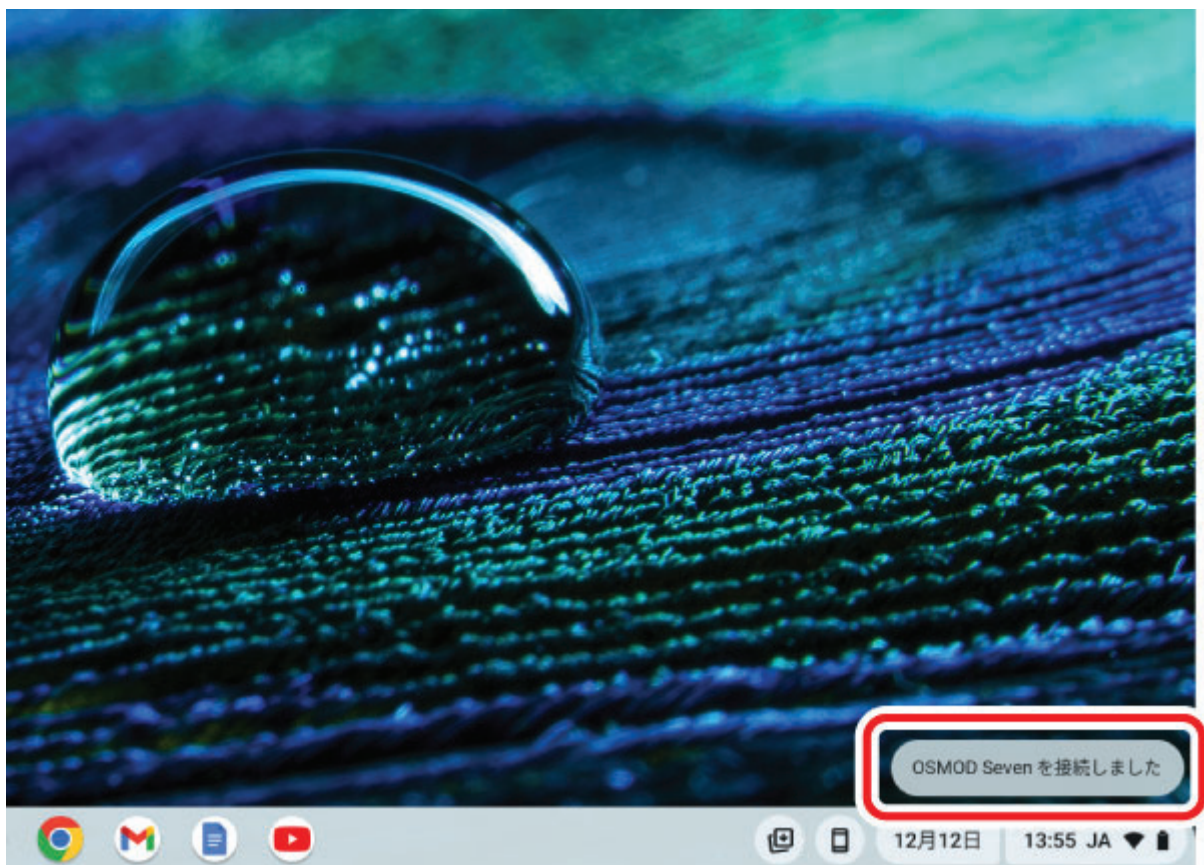
##### 5) Select "OSMOD Seven".

Pairing begins.



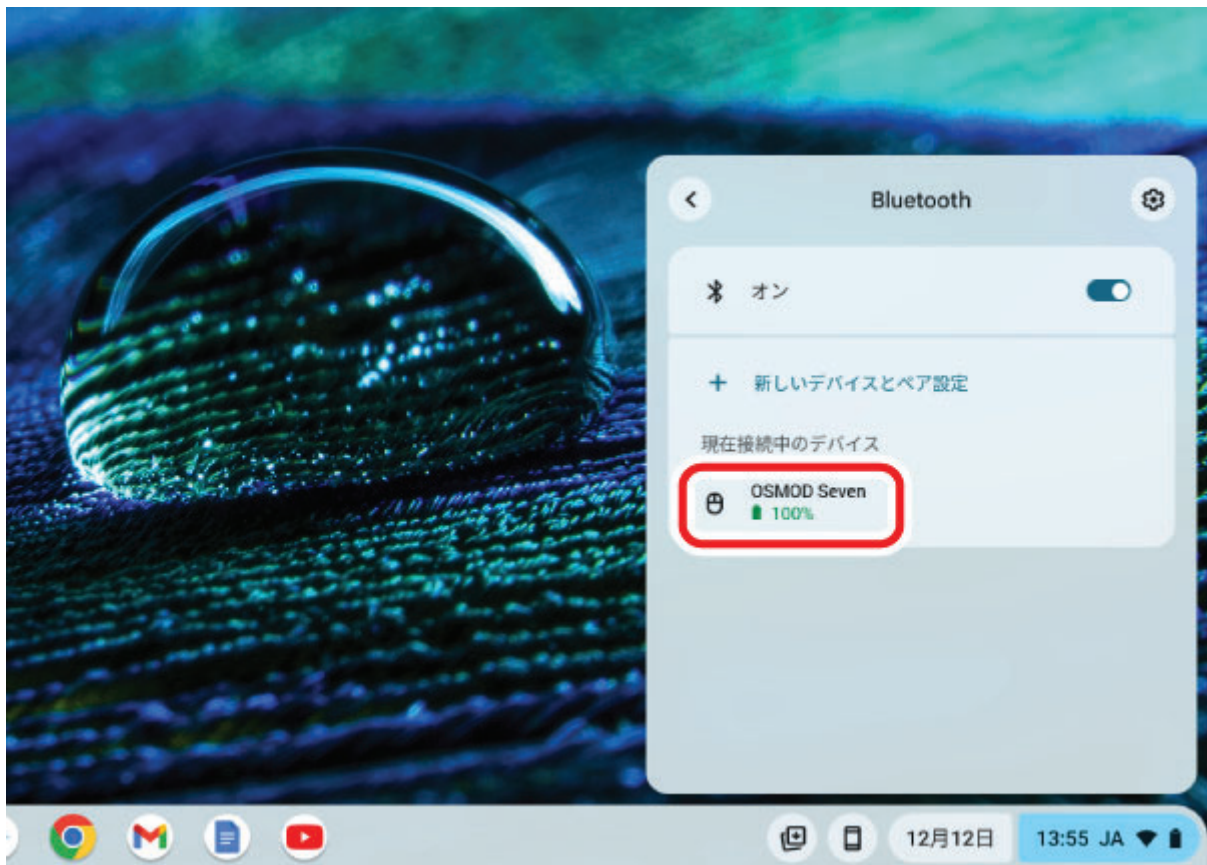
6) "OSMOD Seven connected" will be displayed at the bottom right of the screen.

The LED light will turn on for 3 seconds then turn off.



2) Select "Bluetooth" like in step 2. Pairing is complete when "OSMOD Seven" appears under "Currently connected".





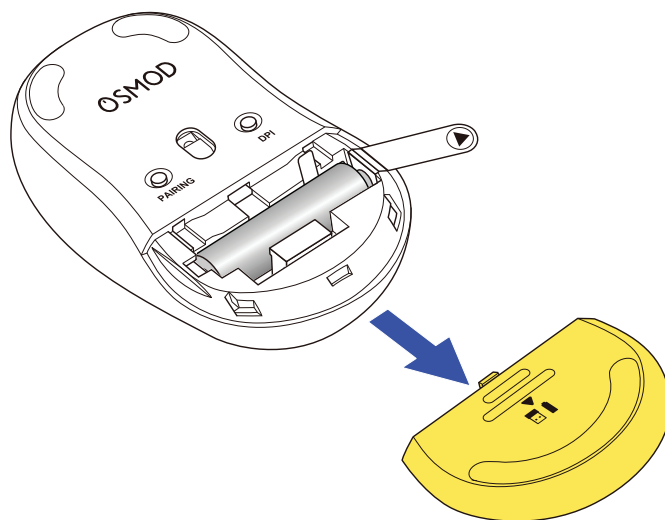
You can now use the mouse.

## Using wireless connection

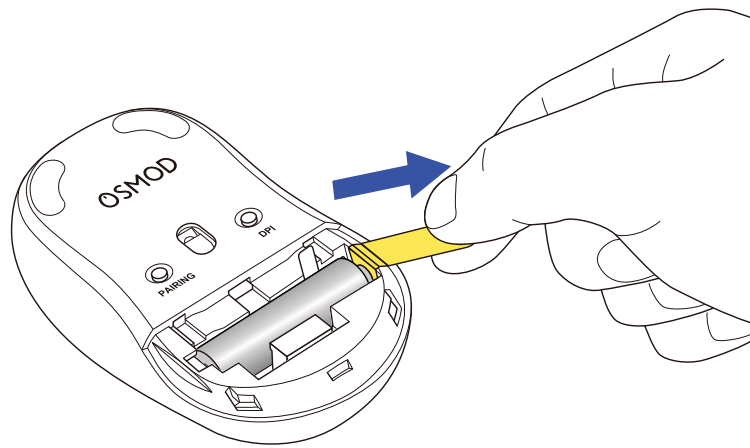


### 1. Remove the battery insulating tab.

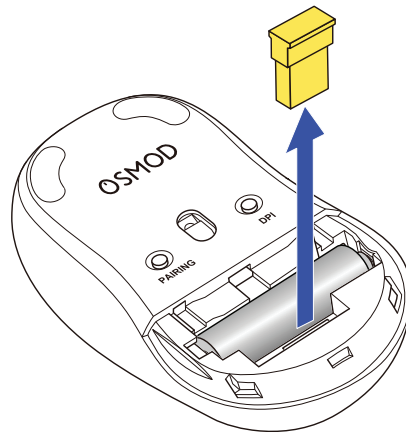
1) Remove the battery cover.



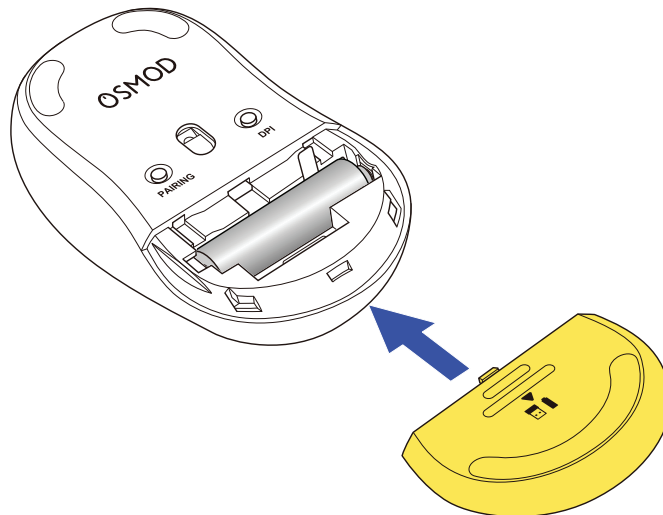
2) Remove the battery insulating tab.



**3) Remove the receiver unit.**

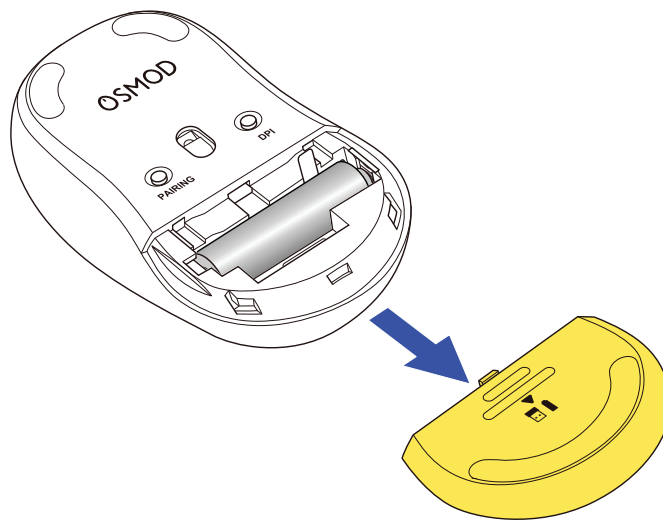


**4) Put the battery cover back on.**



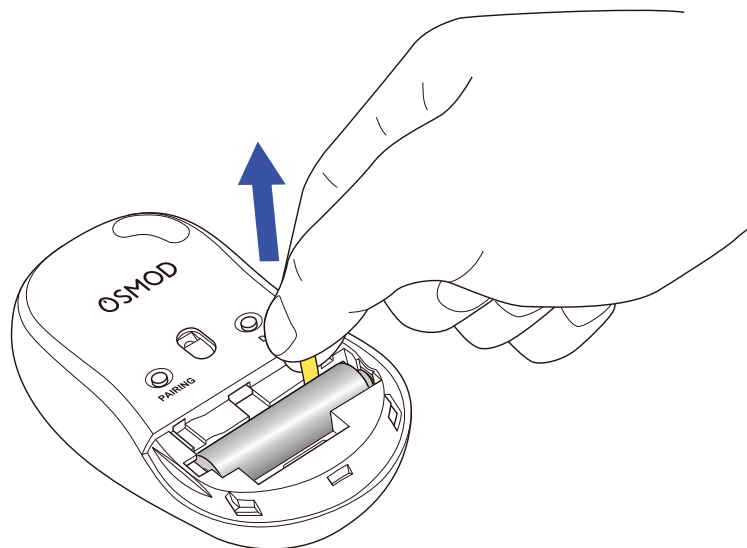
**Replacing the battery...**

**1) Remove the battery cover.**



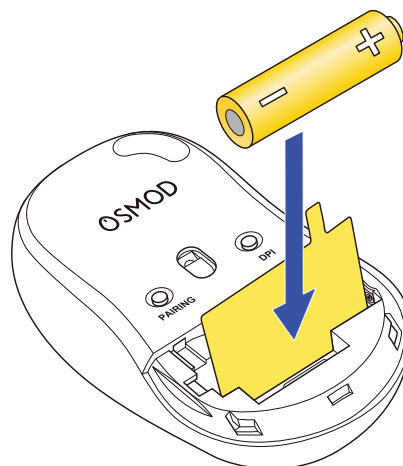
## 2) Remove the battery.

Pull the battery removal sheet to remove the battery.



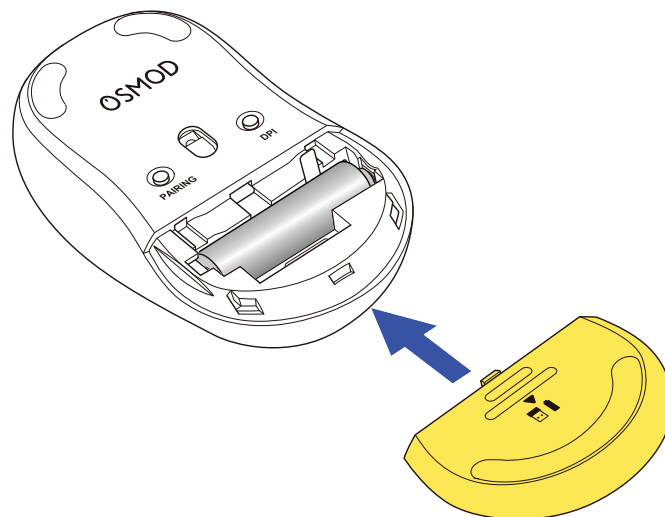
## 3) Insert the battery as instructed on the battery removal sheet.

Insert the battery in with the battery removal sheet below it.



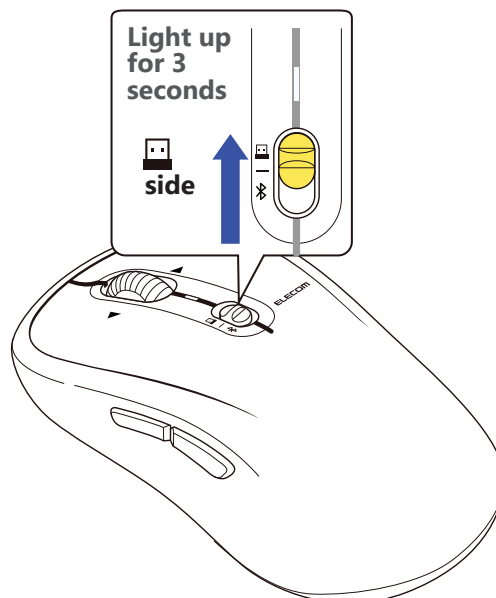
Ensure that the battery is inserted with the positive (+) and negative (-) terminals oriented correctly.

#### 4) Put the battery cover back on.



## 2. Turn the power ON

### 1) Slide the power/connection switch of the product to the position.



The LED lights up white for 3 seconds.

\*When the battery is running low, the LED will blink red.



#### **Power-saving mode**

When the mouse is left untouched for a fixed period of time while the power is on, it automatically shifts to power-saving mode.

The mouse returns from power-saving mode when it is moved.

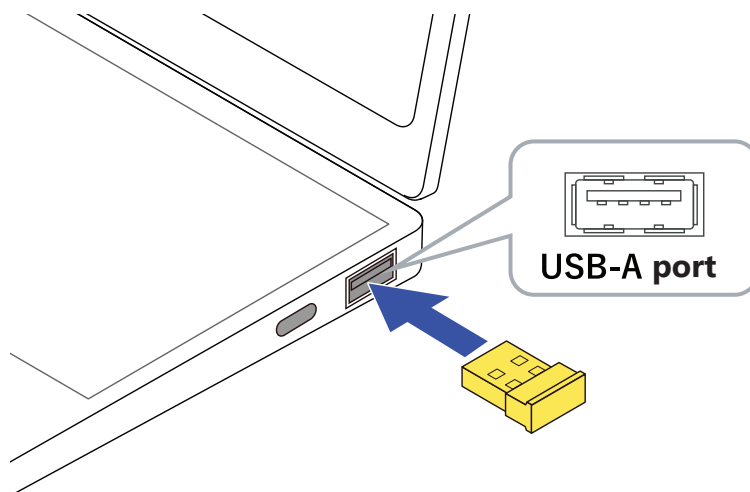
\*Mouse operation may be unstable for 2-3 seconds after returning from the power-saving mode.

## 3. Connect to a PC

### 1) Start up your PC.

Please wait until the PC has started up and can be operated.

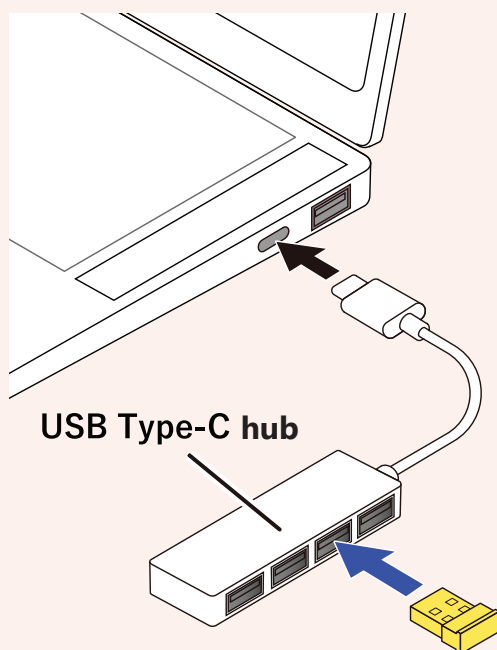
## 2) Insert the receiver unit into the PC's USB-A port.



You may use any USB-A port.



- For devices that do not have a USB-A port, please use a USB Type-C hub.



- Ensure that the connector is correctly oriented to the port.
- If there is strong resistance when inserting, check the shape and orientation of the connector. Forcibly inserting the connector may damage the connector, and there is a risk of injury.
- Do not touch the terminal portion of the USB connector.



### When removing the receiver unit

This product supports hot plugging. The receiver unit can be removed while the PC is on.

## 3) The driver will be automatically installed, and you will then be able to use the mouse.

You can now use the mouse.

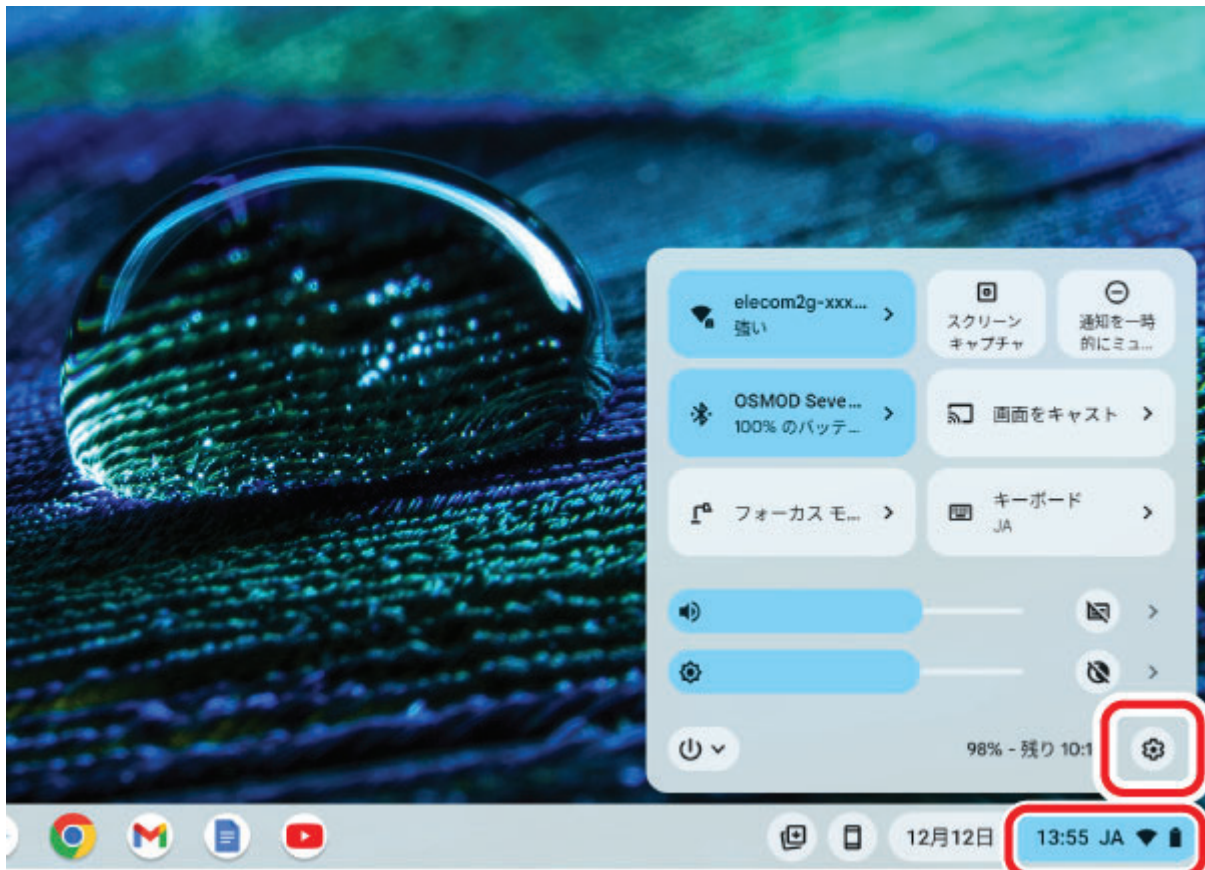
## Change the mouse pointer speed

Adjust the mouse pointer movement speed on your PC if the mouse pointer moves too fast or too slow.

1) Select the battery icon at the bottom right.

2) Select  (settings) on the Quick Settings panel.

The settings page will appear.



3) Select "Mouse" under "Device".





#### 4) Adjust the speed of the mouse pointer using the "Cursor speed" slider on this product.

The display name of this product changes depending on the device to its connection.

- Bluetooth connection: OSMOD Six
- USB 2.4GHz wireless connection: ELECOM OSMOD Six Mouse

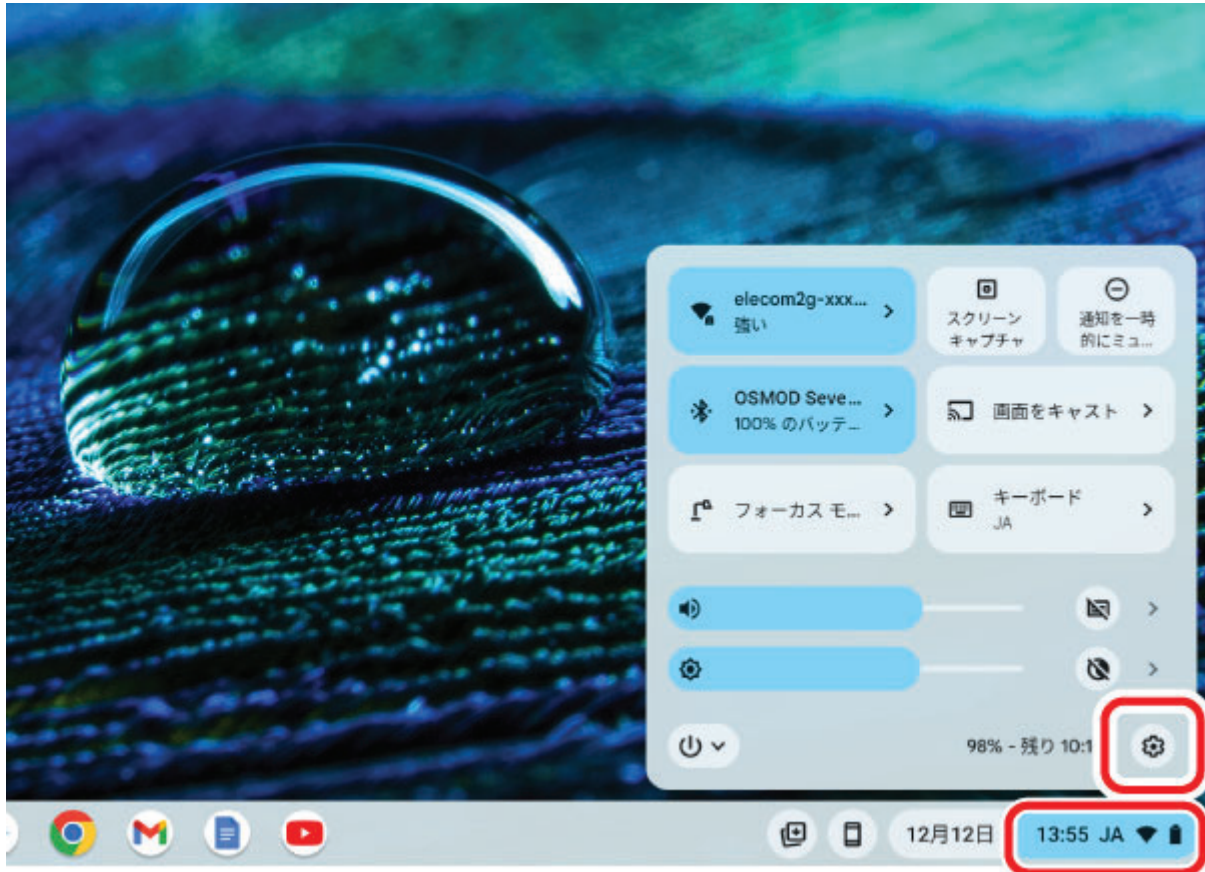


## Change the number of lines scrolled in one wheel turn

1) Select the battery icon at the bottom right.

2) Select  (settings) on the Quick Settings panel.

The settings page will appear.



3) Select "Mouse" under "Device".



#### 4) If "Controlled scrolling" for this product is disabled, click to enable it.

The display name of this product changes depending on the device to its connection.


- Bluetooth connection: OSMOD Seven
- USB 2.4GHz wireless connection: ELECOM OSMOD Seven Mouse



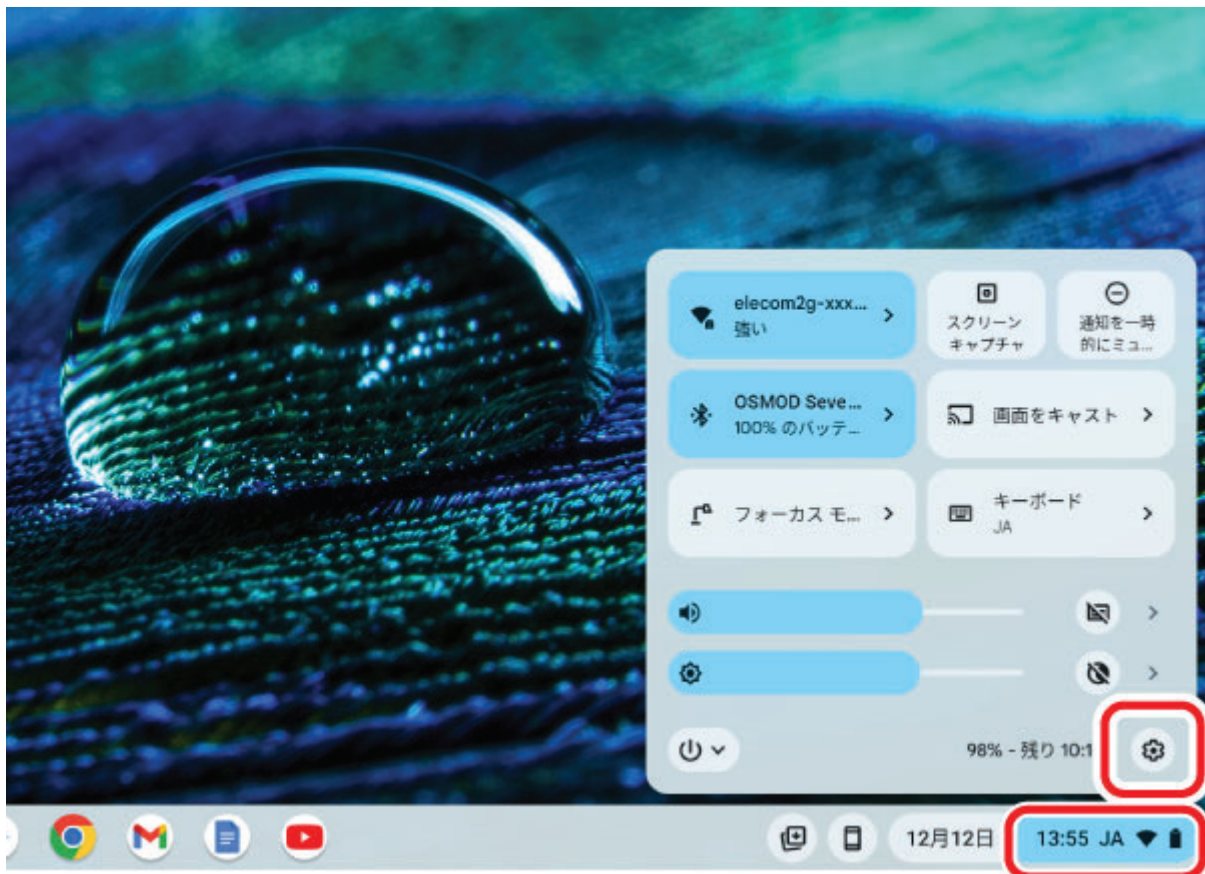
5) Adjust the “Scrolling speed” slider bar for this product to adjust the number of lines per scroll.



## Change scroll direction

- 1) Select the battery icon at the bottom right.
- 2) Select  (settings) on the Quick Settings panel.

The settings page will appear.



3) Select "Mouse" under "Device".



4) Click "Reverse scrolling" for this product to enable or disabled scrolling in the reverse direction.

The display name of this product changes depending on the device to its connection.



- Bluetooth connection: OSMOD Seven
- USB 2.4GHz wireless connection: ELECOM OSMOD Seven Mouse



The scroll direction will be the reverse of the direction of the scroll wheel movement when “Reverse scrolling” is turned on.

# Specifications



Connector type	Receiver unit: USB-A plug
Connection method	USB 2.4 GHz wireless / Bluetooth® wireless
Bluetooth standard	Bluetooth Low Energy Class2
Compatible models	Windows OS, macOS, Chrome OS, Android, iOS and iPadOS-based devices that support Bluetooth® HOGP or USB-port equipped devices.
Supported profiles	HOGP (HID Over GATT Profile)
Supported OS	Windows 11/10, macOS 15 Sequoia, iOS 18/iPad OS 18, ChromeOS, Android 15

Communication method	GFSK
Radio frequency	2.4 GHz
Radio wave range	Maximum length approximately 10 m/32.8 ft. *May vary depending on the environment.
Connected device switching function	Supported (USB 2.4 GHz wireless: 1 / Bluetooth: 1)
Sensor Resolution	1000/1500/2000 DPI
Sensor type	Blue LED
Buttons	7 * including wheel button
Number of wheels	1
Receiver unit storage compartment	Supported
Power source	Any AA alkaline battery, AA manganese battery, or AA nickel-metal hydride rechargeable battery × 1
Battery life	Maximum duration approximately X years X months (estimated operating time when using alkaline battery) *May vary depending on the usage conditions.
Size category	L size
External dimensions (main unit)	Approximately W 65 x L 120 x H 40 mm/W 2.56 x L 4.73 x H 1.58 in.
External dimensions (receiver)	Approximately W 13 x L 19 x H 6 mm/W 0.52 x L 0.75 x H 0.24 in.
Weight (mouse main unit)	Approximately 84 g/2.96 oz *excluding batteries
Mass (receiver unit)	Approximately 2 g/0.08 oz
Operating environment conditions	Temperature: 5 °C to 40 °C / 41 °F to 104 °F, humidity: 90 % RH (without condensation)

Storage environment conditions	Temperature: -10 °C to 60 °C / 14 °F to 140 °F, humidity: 90 % RH (without condensation)
Contents	1 mouse body, 1 receiver, 1 AA alkaline battery (for confirming operability)

## Compliance status



**Model/모델명/设备型号/型號:** MMY40, E02E

[www.elecom.co.jp/global/certification/](http://www.elecom.co.jp/global/certification/)

### ▼ China / 中国

**CMIIT ID:** XXXXXXXXXX

**RoHS Compliance (产品中有毒有害物质或元素的名称及含量)**

[https://www.elecom.co.jp/global/certification/pdf/RoHS\\_China.pdf](https://www.elecom.co.jp/global/certification/pdf/RoHS_China.pdf)

### ▼ EU



**CE Declaration of Conformity**

[https://www.elecom.co.jp/global/certification/pdf/CE\\_DoC.pdf](https://www.elecom.co.jp/global/certification/pdf/CE_DoC.pdf)

**RoHS Compliance**

[https://www.elecom.co.jp/global/certification/pdf/RoHS\\_EU\\_UK\\_Vietnam.pdf](https://www.elecom.co.jp/global/certification/pdf/RoHS_EU_UK_Vietnam.pdf)

**European Authorized Representative (For CE and GPSR matters only)**

VISHTEC Ltd

3rd floor office 5, Plovdiv 2 Liuben Karavelov bul, 4002 Bulgaria

[compliance@vish-tec.com](mailto:compliance@vish-tec.com)





### WEEE Disposal and Recycling Information

This symbol means that waste of electrical and electronic equipment (WEEE) should not be disposed as general household waste. WEEE should be treated separately to prevent possible harm to the environment or human health. Consult your retailer or local municipal office for collection, return, recycle or reuse of WEEE.

### DE: Informationen zu Elektro- und Elektronikgeräten

[https://www.elecom.co.jp/global/certification/pdf/DE\\_WEEE.pdf](https://www.elecom.co.jp/global/certification/pdf/DE_WEEE.pdf)

### FR: INFORMATION DES CONSOMMATEURS SUR LA RÈGLE DE TRI

<https://www.elecom.co.jp/global/certification/pdf/FR-Info-Tri.pdf>

### ▼ Malaysia / Bahasa Melayu



XXXXXXXXXXXXX

### ▼ Singapore

Complies with  
IMDA standards  
DA106058.

**Model Name/No.:** MMY40, E02E

**Operating Frequencies:** XXXX-XXXXMHz

**Maximum field intensity / RF Output power:** X.XX dBm / X.XX mW

### ▼ Taiwan / 台灣



**R33407**  
**RoHS**

## BSMI RoHS Compliance (限用物質含有情況標示聲明書)

[https://www.elecom.co.jp/global/certification/pdf/RoHS\\_Taiwan.pdf](https://www.elecom.co.jp/global/certification/pdf/RoHS_Taiwan.pdf)



型號 XXXXXXXXXXXXXXXX

取得審驗證明之低功率射頻器材，非經核准，公司、商號或使用者均不得擅自變更頻率、加大功率或變更原設計之特性及功能。低功率射頻器材之使用不得影響飛航安全及干擾合法通信；經發現有干擾現象時，應立即停用，並改善至無干擾時方得繼續使用。前述合法通信，指依電信管理法規定作業之無線電通信。低功率射頻器材須忍受合法通信或工業、科學及醫療用電波輻射性電機設備之干擾。

## ▼ UK



### UK Declaration of Conformity

[https://www.elecom.co.jp/global/certification/pdf/UK\\_DoC.pdf](https://www.elecom.co.jp/global/certification/pdf/UK_DoC.pdf)

### RoHS Compliance

[https://www.elecom.co.jp/global/certification/pdf/RoHS\\_EU\\_UK\\_Vietnam.pdf](https://www.elecom.co.jp/global/certification/pdf/RoHS_EU_UK_Vietnam.pdf)



### WEEE Disposal and Recycling Information

This symbol means that waste of electrical and electronic equipment (WEEE) should not be disposed as general household waste. WEEE should be treated separately to prevent possible harm to the environment or human health. Consult your retailer or local municipal office for collection, return, recycle or reuse of WEEE.

## ▼ US

**FCC ID:** YWO-MMY40

**FCC ID:** YWO-E02E

This device complies with Part 15 of the FCC Rules. Operation is subject to the following two conditions: (1) this device may not cause harmful interference, and (2) this device must accept any interference received,

including interference that may cause undesired operation.

NOTE; This equipment has been tested and found to comply with the limits for a Class B Digital Device, pursuant to part 15 of the FCC Rules. These limits are designed to provide reasonable protection against harmful interference in a residential installation. This equipment generates, uses and can radiated radio frequency energy and, if not installed and used in accordance with the instruction, may cause harmful interference to radio communication. However, there is no guarantee that interference will not occur in a particular installation. If this equipment does cause harmful interference to radio or television reception, which can be determined by tuning the equipment off and on, the user is encouraged to try to correct the interference by one or more of the following measures:

- Reorient or relocate the receiving antenna
- Increase the separation between the equipment and receiver
- Connect the equipment into an outlet on a circuit different from that to which the receiver is connected
- Consult the dealer or an experienced radio/TV technician for help

NOTICE: The manufacture is not responsible for any radio or TV interference caused by unauthorized modification to this equipment. Such modifications could void the user's authority to operate the equipment.

In order to make improvements to this product, the design and specifications are subject to change without prior notice.

**FCC Caution:** To assure continued compliance, any changes or modifications not expressly approved by the party responsible for compliance could void the user's authority to operate this equipment. (Example - use only shielded interface cables when connecting to computer or peripheral devices).

### **FCC Radiation Exposure Statement**

This equipment complies with FCC RF radiation exposure limits set forth for an uncontrolled environment. This equipment should be installed and operated with a minimum distance of 0.5 cm between the radiator and your body.

This transmitter must not be co-located or operating in conjunction with any other antenna or transmitter.

The antennas used for this transmitter must be installed to provide a separation distance of at least 0.5 cm from all persons and must not be co-located or operating in conjunction with any other antenna or transmitter.

### **Responsible party**

ELECOM USA, Inc.

2211 Michelson Dr. Suite 900, Irvine, CA 92612 USA

[elecomusa.com](http://elecomusa.com)

## ELECOM CO., LTD.

Fushimimachi 4-1-1, Chuo-ku, Osaka City

### [Go to Global Site](#)

### [Global Support](#)

Please contact the shop where you purchased this product if you have any feedback or questions about the contents of this manual.

Specifications and external appearance of this product may be changed without prior notice for the purpose of product improvement.

ELECOM is not responsible for any damages to, or failure of other devices caused by using this product.

The images are for illustration purposes only and may differ from your actual product.

When exporting this product, check the export regulations for the country of origin.

A customer who purchases outside Japan should contact the local retailer in the country of purchase for enquiries. In "ELECOM CO., LTD. (Japan)", no customer support is available for enquiries about purchases or usage in/from any countries other than Japan. Also, no foreign language other than Japanese is available. Replacements will be made under stipulation of the ELECOM warranty.

Bei Fragen zum Inhalt dieses Handbuchs wenden Sie sich bitte an das Geschäft, in dem Sie dieses Produkt erworben haben.

Die technischen Daten und das äußere Erscheinungsbild dieses Produkts können zum Zweck der Produktverbesserung ohne vorherige Ankündigung geändert werden.

ELECOM haftet nicht für Schäden oder Ausfälle an anderen Geräten, die durch die Verwendung dieses Produkts verursacht werden.

Die Abbildungen dienen nur der Veranschaulichung und können vom tatsächlichen Produkt abweichen. Prüfen Sie bei der Ausfuhr dieses Produkts die Ausfuhrbestimmungen für das Herkunftsland.

Ein Kunde, der außerhalb Japans kauft, sollte sich für Rückfragen an den örtlichen Händler im jeweiligen Erwerbsland wenden. Bei „ELECOM CO., LTD. (Japan)“ steht, außer in Japan, kein Kundendienst für Anfragen zum Kauf oder zur Verwendung in/aus anderen Ländern zur Verfügung.

Zudem ist keine andere Fremdsprache als Japanisch verfügbar. Ersatz wird im Rahmen der ELECOM-Garantie geleistet.

Por favor, póngase en contacto con la tienda en la que adquirió este producto si tiene algún comentario o pregunta sobre el contenido de este manual.

Las especificaciones y la apariencia externa de este producto pueden modificarse sin previo aviso con el fin de mejorar el producto.

ELECOM no se hace responsable de los daños o fallos de otros dispositivos causados por el uso de este producto.

Las imágenes son solo para fines ilustrativos y pueden diferir del producto real.

Al exportar este producto, compruebe la normativa de exportación del país de origen.

Los clientes que compren fuera de Japón deben ponerse en contacto con el distribuidor local del país de compra para realizar consultas. En "ELECOM CO., LTD. (Japón)", no se brinda servicio de atención al cliente para consultas sobre compras o uso en/desde otros países que no sean Japón. Además, no está disponible ninguna otra lengua extranjera que no sea el japonés. Los reemplazos se efectuarán bajo la estipulación de la garantía de ELECOM.

Veuillez contacter le magasin où vous avez acheté ce produit si vous avez des commentaires ou des questions sur le contenu de ce manuel.

Les spécifications et l'aspect extérieur de ce produit peuvent être modifiés sans préavis dans le but d'améliorer le produit.

ELECOM n'est pas responsable des dommages ou des défaillances d'autres appareils causés par l'utilisation de ce produit.

Les images sont fournies à titre d'illustration uniquement et peuvent différer du produit réel.

Lorsque vous exportez ce produit, vérifiez les réglementations d'exportation du pays d'origine.

Un client qui achète hors du Japon doit contacter le détaillant local du pays d'achat pour toute question. Chez « ELECOM CO., LTD. (Japon) », aucun support client n'est disponible pour les questions relatives aux achats ou à l'utilisation dans/à partir de tout pays autre que le Japon. De même, aucune langue étrangère autre que le japonais n'est disponible. Les remplacements seront effectués conformément aux dispositions de la garantie ELECOM.

Entre em contato com a loja onde você comprou este produto se tiver alguma sugestão ou dúvida sobre o conteúdo deste manual.

As especificações e aparência externa deste produto podem ser alteradas sem aviso prévio para fins de

melhoria do produto.

A ELECOM não é responsável por quaisquer danos ou falhas de outros dispositivos causados pelo uso deste produto.

As imagens são apenas para fins ilustrativos e podem diferir do produto real.

Ao exportar este produto, confira os regulamentos de exportação para o país de origem.

Um cliente que compra fora do Japão deve entrar em contato com o revendedor local no país de compra para obter informações. Na "ELECOM CO., LTD. (Japão)", nenhum suporte ao cliente está disponível para consultas sobre compras ou uso em/de quaisquer outros países além do Japão. Além disso, nenhum outro idioma estrangeiro está disponível além do japonês. As trocas serão feitas sob estipulação da garantia ELECOM.

如果您对本手册内容有任何反馈或疑问，请与购买本产品的零售商联系。

本产品的规格及外观如有变更以对产品进行改进，恕不另行通知。

因使用本产品而造成其他设备故障或问题时，ELECOM概不负责，敬请知悉。

图片仅供参考，您所收到的实际产品可能有所差异。

出口本产品至海外时，请检查原产国的出口法规。

在日本境外购买产品的客户应与当地的的零售商联系进行咨询。“ELECOM CO., LTD. (日本)”不对日本之外的其他国家的客户提供有关购买或使用的咨询服务。另外，公司不提供日语之外的其他外语服务。产品如需更换，需要在 ELECOM 保修期规定范围之内。

若您對本手冊的內容有任何回饋或疑問，請聯絡您購買本產品的商店。

為了改進產品，本產品的規格和外觀可能會發生變化，恕不事先通知。

ELECOM 對因使用本產品而造成的其他裝置損壞或故障不承擔責任。

圖片僅用於說明目的，可能與您的實際產品有所出入。

出口這款產品時，需檢查原產國的出口規定。

客戶若在日本以外地區購買本產品，如有任何問題，應聯絡購買當地的經銷商。對於在日本以外的任何其他地區購買的產品，或於此類地區使用產品，「ELECOM CO., LTD.(Japan)」皆不針對相關問題提供支援。與此同時，除日語以外，不提供其他的外國語言服務。您可以根據ELECOM的規定於保固期間要求更換產品。

본 취급설명서는 설명서에 대한 의견 또는 질문이 있으신 경우 본 제품을 구매한 대리점으로 문의하시기 바랍니다.

본 제품의 사양 및 외관은 제품 개선을 위해 사전 통지 없이 변경될 수 있습니다.

본 제품의 사용에 따른 다른 기기의 고장이나 트러블에 관해서는 책임을 지지 않으므로 양해 바랍니다.

일부 형태가 달라지는 경우도 있습니다.

본 제품을 수출할 때, 원산지의 수출 규정을 확인합니다.

일본 외 다른 국가에서 구입하는 고객은 문의 사항이 있는 경우 제품 구입 국가의 대리점에 연락하십시오. 'ELECOM CO., LTD.(일본)'는 일본 이외의 국가에서 구입 또는 사용 문의에 대한 고객 지원을 제공하지 않습니다. 또한 일본어 이외의 외국어는 지원되지 않습니다. 제품의 교환은 ELECOM 보증 규정에 따라 이루어 집니다.

Silakan hubungi toko tempat Anda membeli produk ini jika Anda memiliki masukan atau pertanyaan tentang isi manual ini.

Spesifikasi dan tampilan luar produk ini dapat berubah tanpa pemberitahuan sebelumnya untuk tujuan peningkatan produk.

ELECOM tidak bertanggung jawab atas segala kerusakan atau kegagalan perangkat lain yang disebabkan oleh penggunaan produk ini.

Gambar-gambar yang tertera hanyalah untuk ilustrasi dan mungkin berbeda dari produk asli.

Saat produk diekspor, harap periksa dengan saksama semua peraturan ekspor negara asal.

Pelanggan yang membeli di luar Jepang harus menghubungi peritel lokal di negara pembelian untuk pertanyaan apa pun. Di "ELECOM CO., LTD. (Jepang)", tidak tersedia dukungan pelanggan untuk pertanyaan tentang pembelian atau penggunaan di/dari negara lain selain Jepang. Selain itu, tidak tersedia bahasa asing lain selain Jepang. Penggantian akan dilakukan sesuai dengan ketentuan garansi ELECOM.

Sila hubungi kedai tempat anda membeli produk ini jika anda mempunyai sebarang maklum balas atau pertanyaan tentang kandungan manual ini.

Spesifikasi dan rupa luaran produk ini boleh diubah tanpa notis awal untuk tujuan penambahbaikan produk.

ELECOM tidak bertanggungjawab ke atas sebarang kerosakan, atau kegagalan peranti lain yang disebabkan oleh penggunaan produk ini.

Imej adalah bagi tujuan ilustrasi sahaja dan mungkin berbeza daripada produk sebenar anda.

Apabila mengeksport produk ini, periksa peraturan eksport bagi negara asal.

Pelanggan yang membeli di luar Jepun harus menghubungi peruncit tempatan di negara pembelian untuk pertanyaan. Di "ELECOM CO., LTD. (Jepun)", tiada sokongan pelanggan yang disediakan untuk pertanyaan mengenai pembelian atau penggunaan di/dari mana-mana negara selain Jepun. Selain

itu, tiada bahasa asing yang tersedia selain daripada bahasa Jepun. Penggantian akan dibuat di bawah penetapan jaminan ELECOM.