

Pebble Bluetooth Touch Presenter Mouse

USER GUIDE

Touch what you desire

More than Touch



Bluetooth Qualified Product



FCC ID : YWGG30-AAA

CONTENTS

| | |
|---|-----------|
| INTRODUCTION | 3 |
| FEATURES..... | 3 |
| SYSTEM REQUIREMENTS..... | 4 |
| HARDWARE | 4 |
| OPERATING SYSTEM | 4 |
| PACKAGE CONTENTS..... | 4 |
| PHYSICAL SPECIFICATION..... | 5 |
| BATTERIES INSTALLATION..... | 6 |
| BLUETOOTH TECHNOLOGY INSTALLATION..... | 7 |
| Microsoft Windows Default Application: | 7 |
| Toshiba Application: | 12 |
| IVT BlueSoleil Application: | 14 |
| WIDCOMM Application: | 17 |
| MAC Application: | 20 |
| Linux Application:..... | 22 |
| TOUCH PRESENTER MOUSE LED DESCRIPTIONS | 25 |
| TOUCH MOUSE OPERATING MODE | 26 |
| TOUCH PRESENTER OPERATING MODE | 27 |
| REGULATORY COMPLIANCE | 28 |

INTRODUCTION

Congratulations on your purchase of the Pebble Touch Presenter Mouse, the amazing solution that combining a Touch Mouse and Intelligent Presenter in one sleek device .

It offers high-performance that works like a charm and easy to connect to your desktop or laptop computer via Bluetooth wireless technology.

Provides wireless convenience for seamless functionality in the office or on the go. Designed to fit comfortably in your right or left hand, ideal for virtually anyone.

With a flexible curved surface ID design with free buttons , all functions are by using flap and multi-gesture and help you to display and monitor your presentations at ease.

FEATURES

- Bluetooth Wireless Laser Mouse
- Seamless connections up to 33ft (10M) in range
- Touch technology
- All Functions by using flap and multi-gesture :
 - ◆ Mouse
 - ◆ Presenter
- Presenter Mode : Support PDF and Power Point
- Auto detect Mouse/Presenter mode
- Low-power / Manage power efficiently
- Power mode :
 - ◆ Support two AAA batteries / Rechargeable battery
 - ◆ Li-ion battery : Flexible recharge by USB micro B cable
- Without any driver to install
- Production Certifications : CE , FCC , VCCI , C-Tick, BQB

SYSTEM REQUIREMENTS

HARDWARE

- ◆ Available Bluetooth-enabled desktop or laptop computer (requires computer enabled with Bluetooth® Technology).

OPERATING SYSTEM

- ◆ Windows
- ◆ Mac OS
- ◆ Linux

PACKAGE CONTENTS

- ◆ Pebble Touch Presenter Mouse
- ◆ USB to Micro B cable
- ◆ User Guide

PHYSICAL SPECIFICATION

| | |
|-----------------------|--|
| Interface | Bluetooth 2.0 |
| Operating Distance | 33ft (10 meters) |
| Radio Frequency | 2.401GHz ~ 2.483GHz |
| Tracking Sensor | Avago 7532 Laser-Based sensor |
| Resolution | 1,200 dpi |
| Modulation Method | GFSK |
| Profile | HID v1.0 |
| Data Rate | 2.1 Mbps |
| Power Mode | 1. Support two AAA-size batteries / rechargeable battery 2. Li-ion battery : Flexible recharge by USB micro B cable (Charging time : up to 4 hours) |
| Button / Scroll | All by flap and multi-gesture |
| Presentation | Full Screen / Start, Escape, Next Slide, Previous Slide |
| Dimensions | 90.00 (L) x 60.00 (W) x 30.00(H) mm |
| Weight | 1. Support two AAA-size batteries: 65g. 2. Li-ion battery: 83g. |
| Operation Temperature | 0 - 40 ± 2°C |
| Operation Humidity | 90 ± 2~3 %RH |
| Certification | CE, FCC, VCCI, C-Tick , BQB |
| Regulation | RoHS |

BATTERIES INSTALLATION

- Use the two AAA-size batteries.
- Remove the battery cover from back of the mouse.



- Insert the batteries, making sure that the positive(+) and negative(-) ends of each battery match the polarity indicators inside the battery housing.
- Snap the battery cover back into position.



BLUETOOTH TECHNOLOGY INSTALLATION

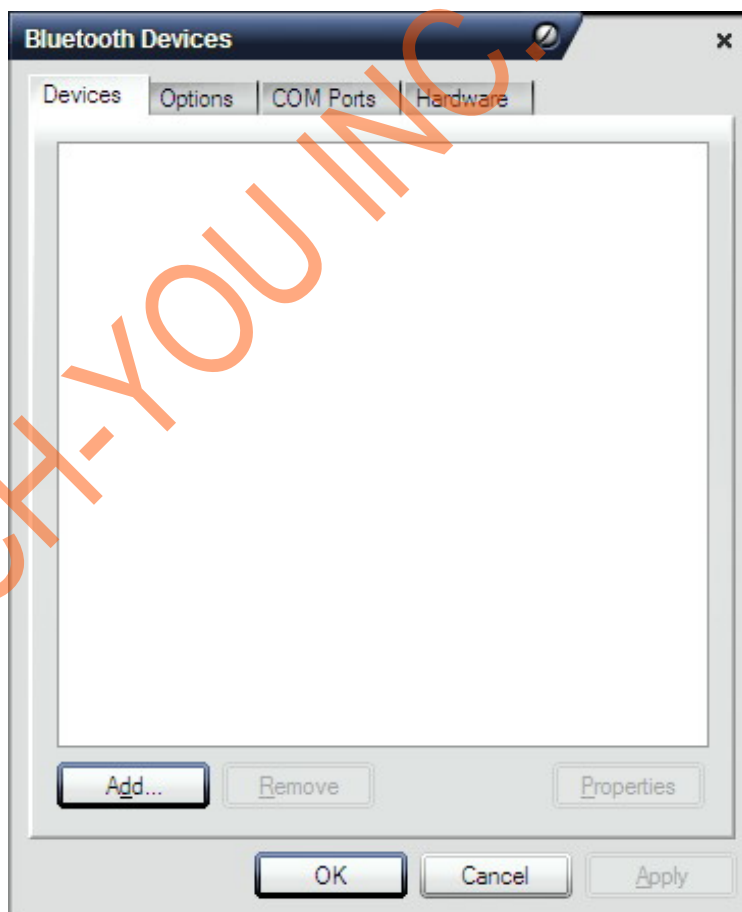
Please connect **Pebble Touch Presenter Mouse** to a desktop or laptop computer wirelessly if the computer has needed to support Bluetooth connections.

If the computer doesn't have Bluetooth capabilities built in, please add Bluetooth wireless connectivity to a desktop or laptop computer by installing a Bluetooth wireless USB Dongle and its software, ex

Windows : Microsoft Embedded Standard / Toshiba / IVT / WIDCOMM ... Mac OS X... or Linux embedded ...

Microsoft Windows Default Application:

- 1) Go to the Bluetooth icon located on your desktop or laptop computer and double click. Please click "Add Bluetooth Devices".

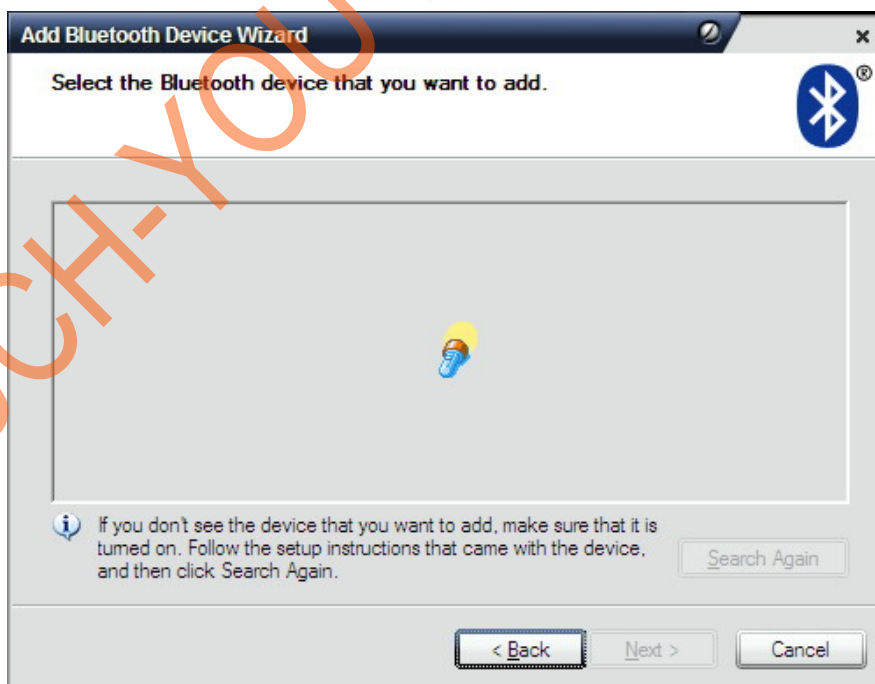


- 2) Please check the indicator light on the **Pebble Touch Presenter Mouse** by Blue LED Speedy Blink.

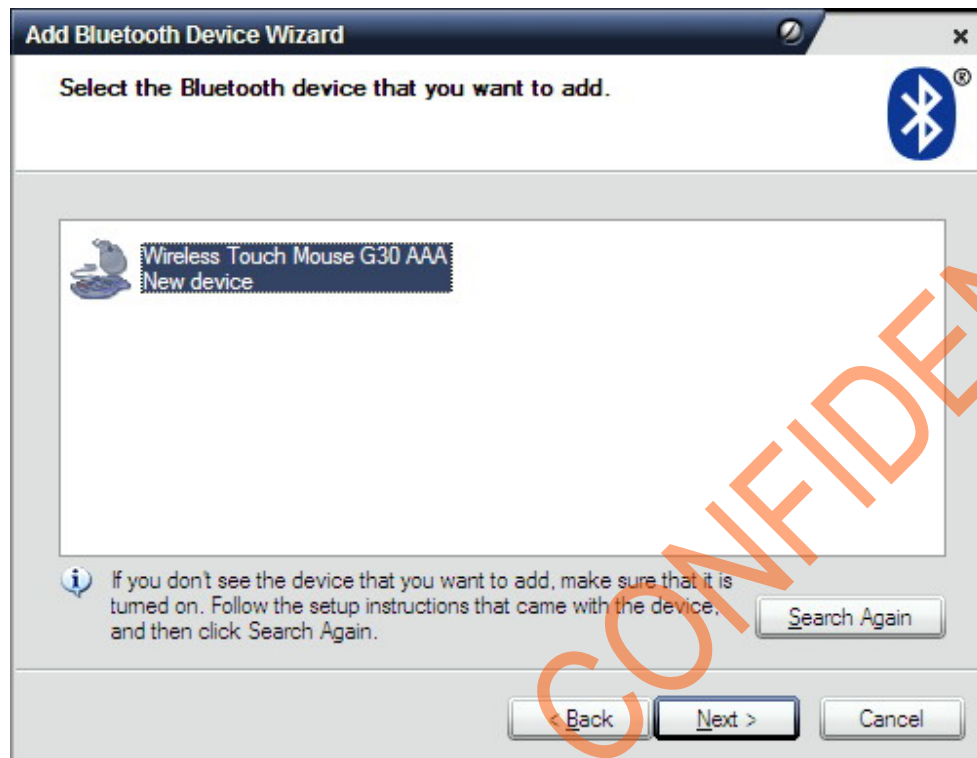
Then please click " My device is set up and ready to be found " and Click "**Next**".



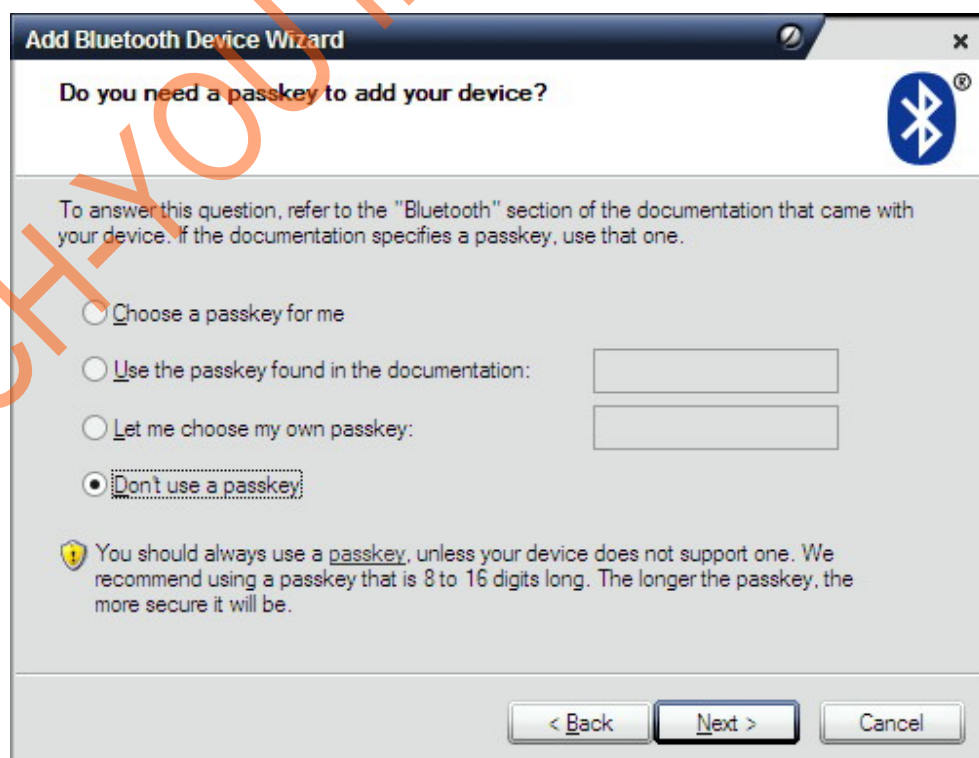
- 3) The "Add Bluetooth Device Wizard" will start searching for Bluetooth Devices.



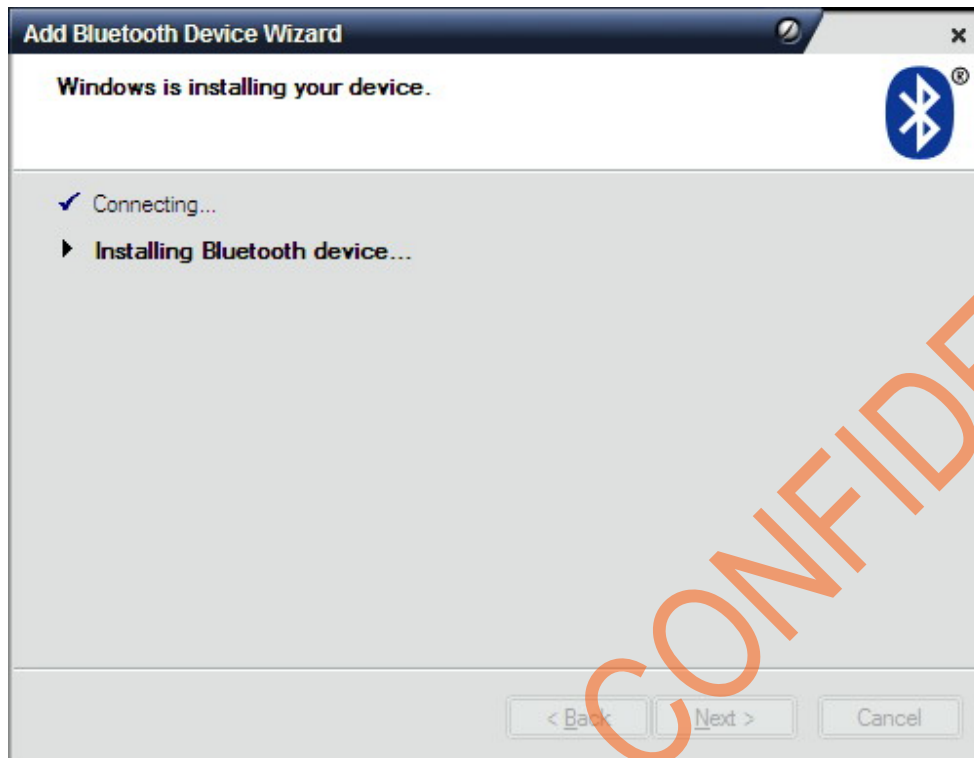
4) Please click " **Wireless Touch Mouse G30** " and click "**Next**".



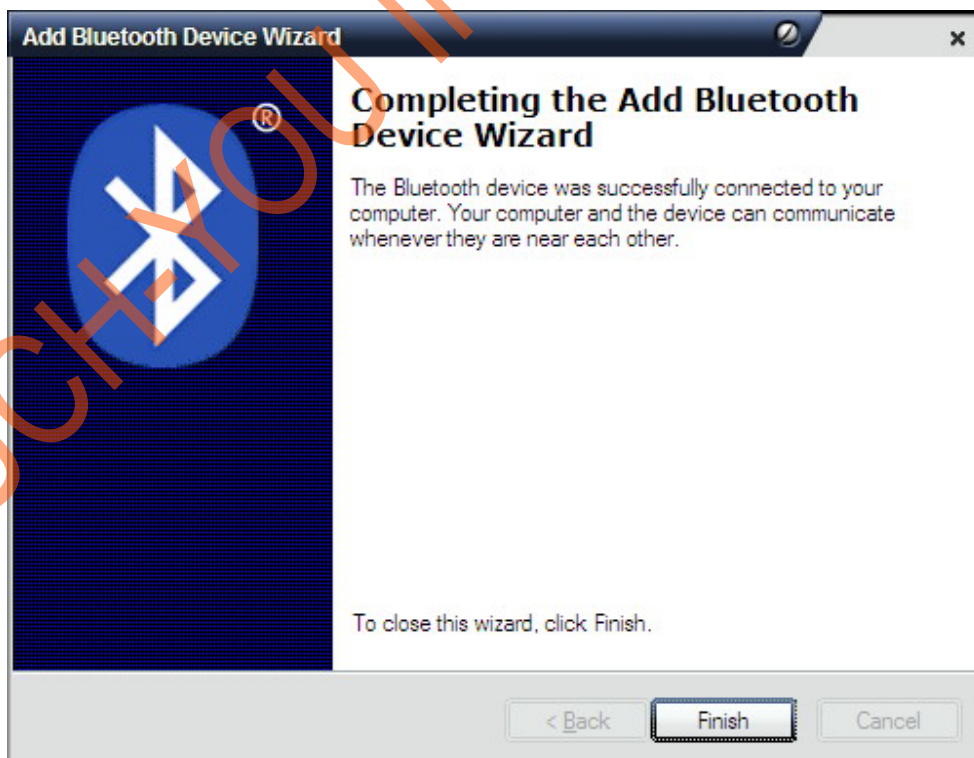
5) Please select " **Don't use a passkey** " and click "**Next**".



- 6) The **"Add Bluetooth Device Wizard"** will start to pair with the **"Wireless Touch Mouse G30"**.

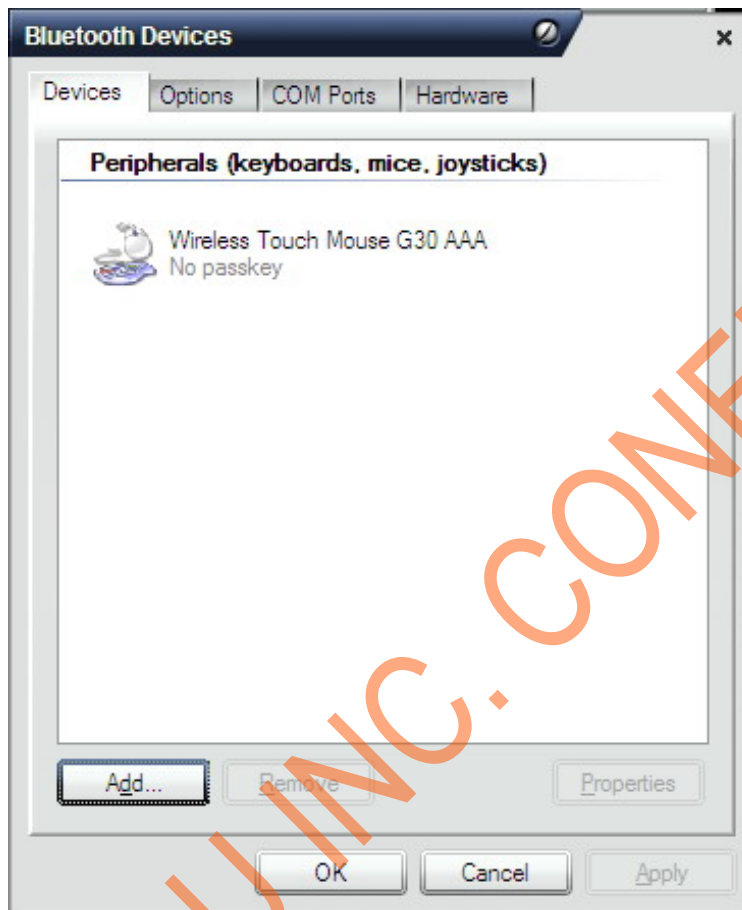


- 7) Please Click **"Finish"**.



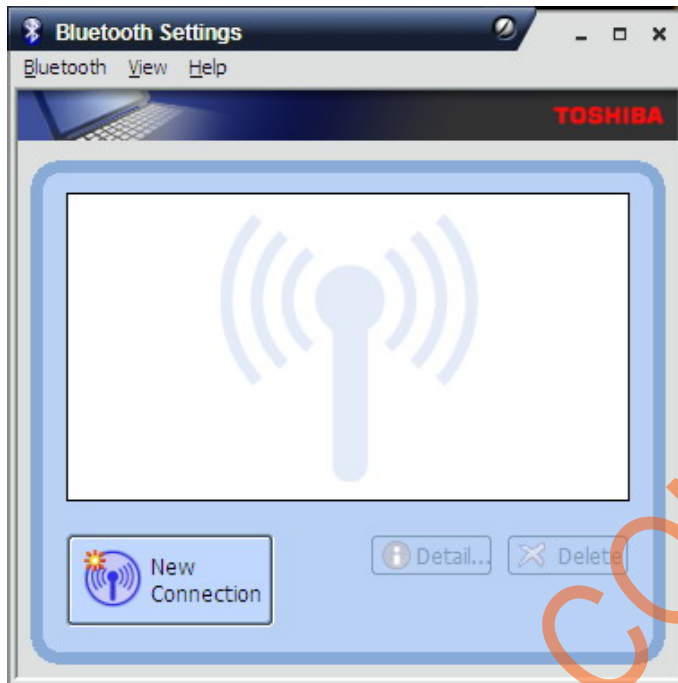
- 8) " **Wireless Touch Mouse G30** " will appear in the "**Bluetooth Devices**" window.

Now **Pebble Touch Presenter Mouse** be paired successfully.



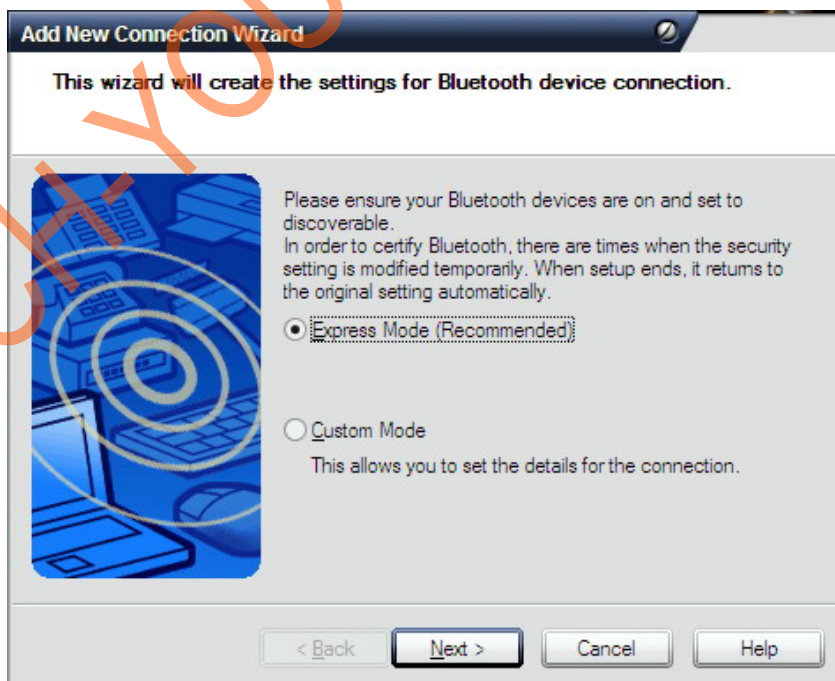
Toshiba Application:

- 1) Go to the Bluetooth icon located on your desktop or laptop computer and double click. Please click "New Connection".

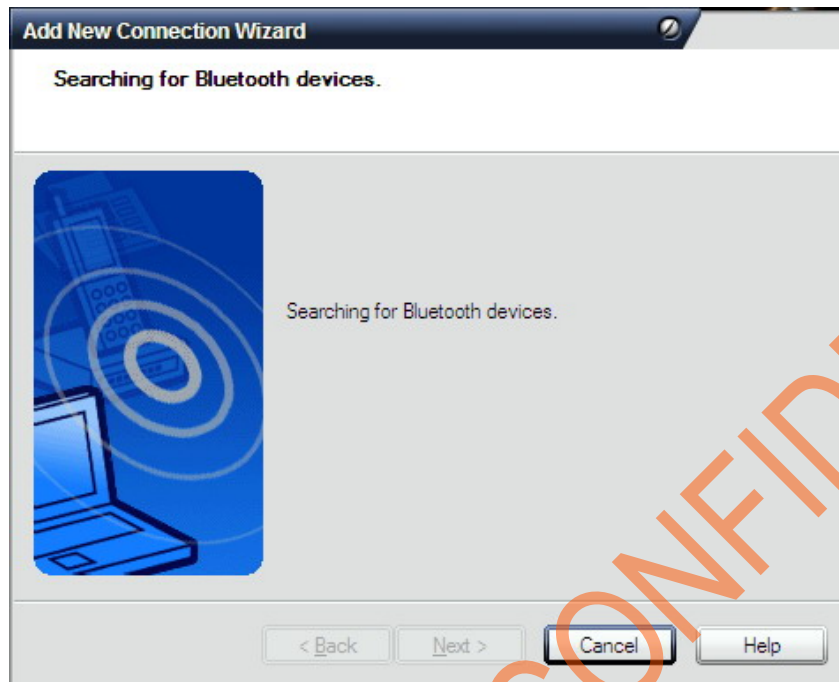


- 2) Now please check the indicator light on the **Pebble Touch Presenter Mouse** by Blue LED Speedy Blink.

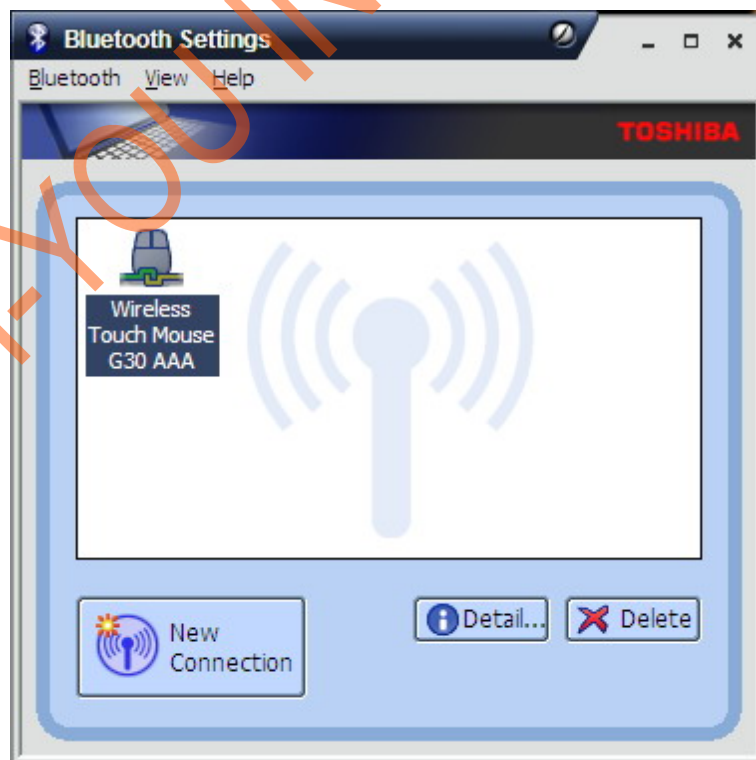
Please select "**Express Mode (Recommended)**" and Click "**Next**".



- 3) The "Add New Connection Wizard" will start searching for Bluetooth devices.



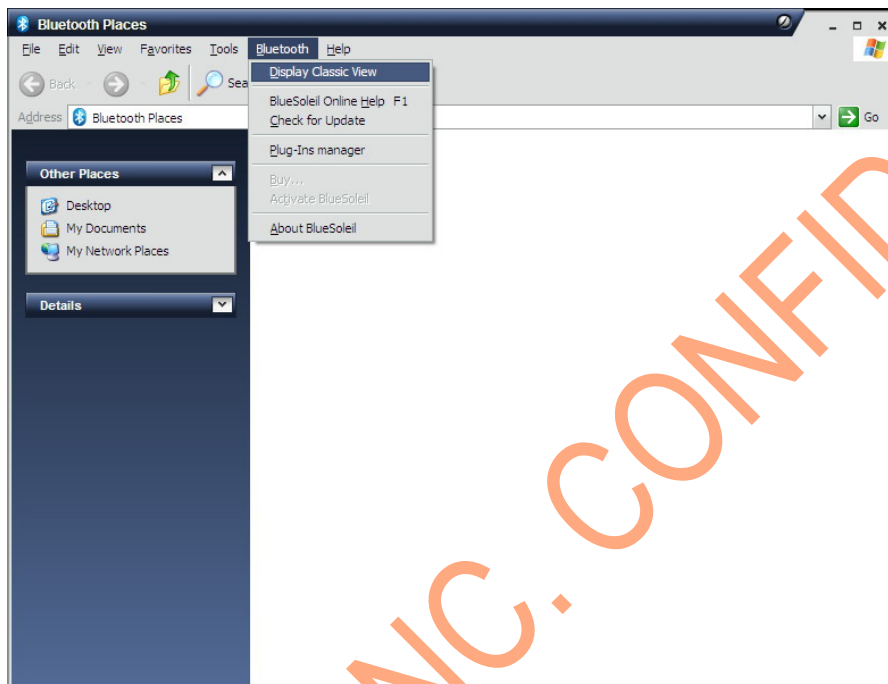
- 4) " **Wireless Touch Mouse G30** " will appear in the "Bluetooth Settings" window.
Now **Pebble Touch Presenter Mouse** be paired successfully.



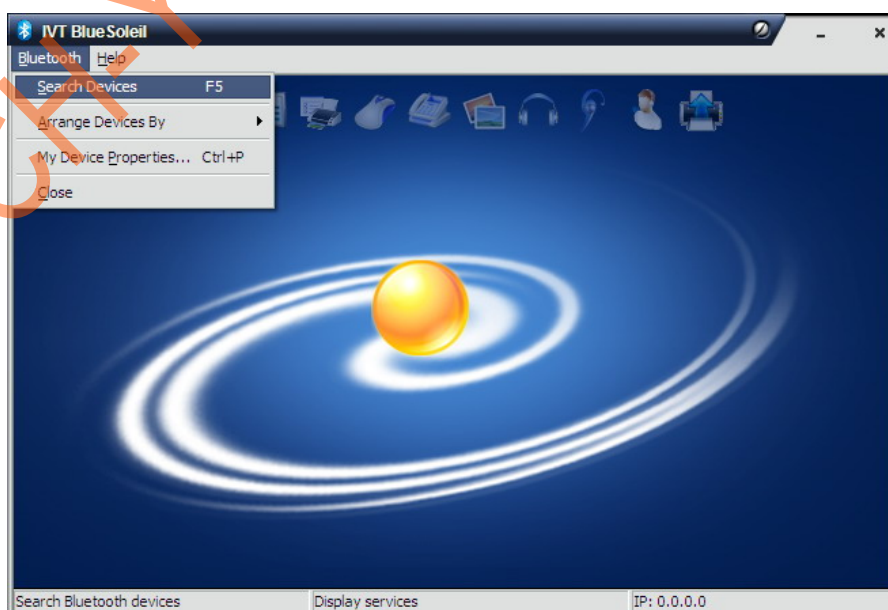
IVT BlueSoleil Application:

- 1) Go to the Bluetooth icon located on your desktop or laptop computer and double click. Please click "Add Bluetooth Devices".

Choose "Add a Bluetooth Device" → "Bluetooth" → "Display Classic View".



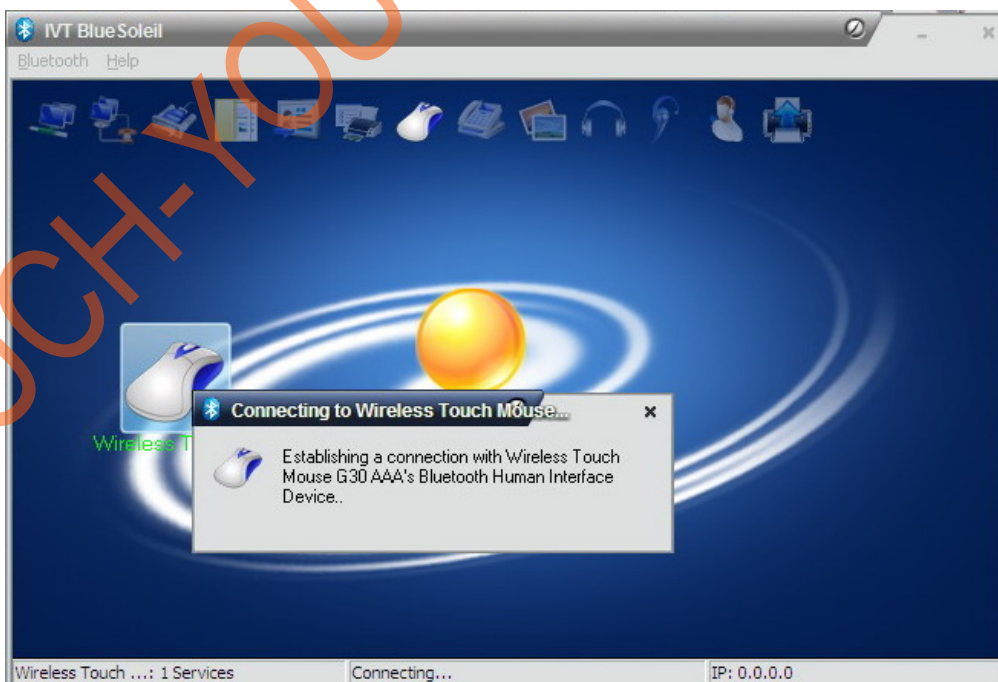
- 2) Please check the indicator light on the **Pebble Touch Presenter Mouse** by Blue LED Speedy Blink.
Choose "Bluetooth" → "Search Device".
The "IVT BlueSoleil" will start searching for Bluetooth devices.



- 3) The " **Wireless Touch Mouse G30** "will be searched and display on IVT Application.
please click mouse right button. Please choose "Connect Bluetooth Human Interface Device".

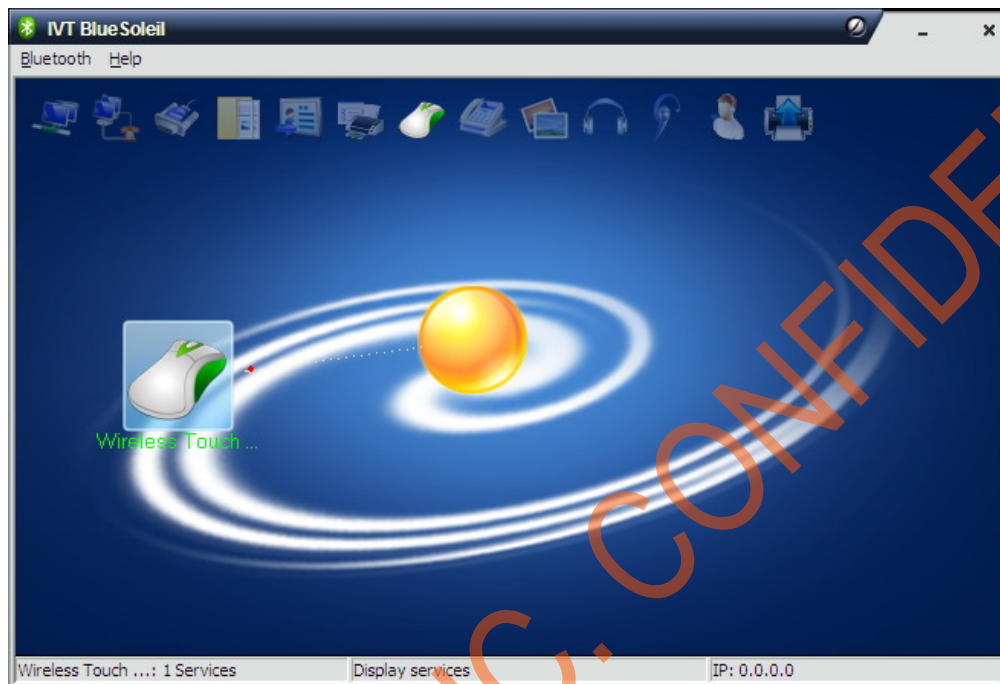


- 4) The "IVT BlueSoleil" will start connecting to Wireless Touch Mouse.....



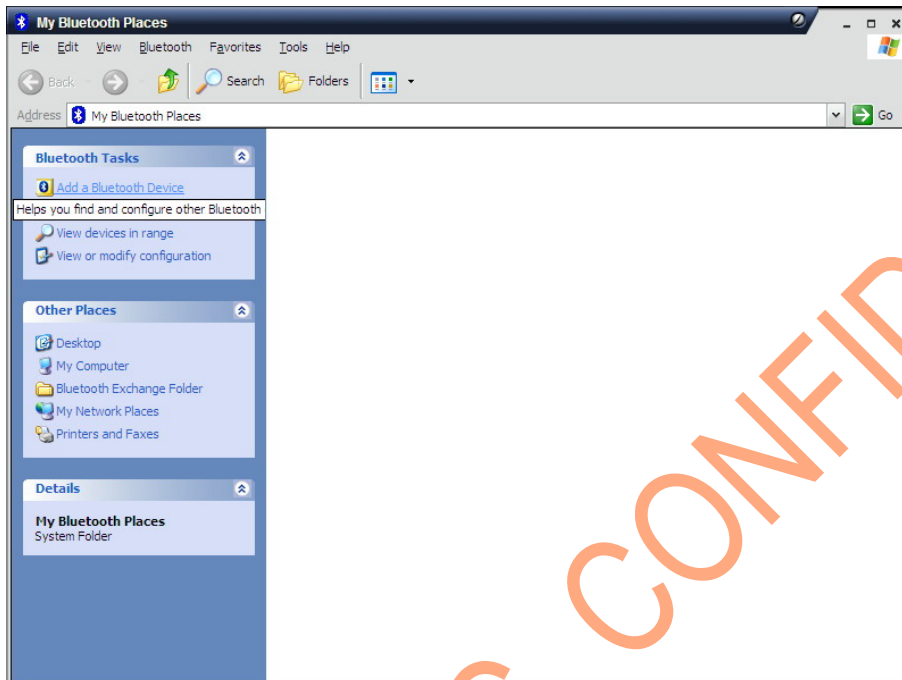
- 5) " **Wireless Touch Mouse G30** " will appear in the "IVT Blue Soleil" window.

Now **Pebble Touch Presenter Mouse** be paired successfully.



WIDCOMM Application:

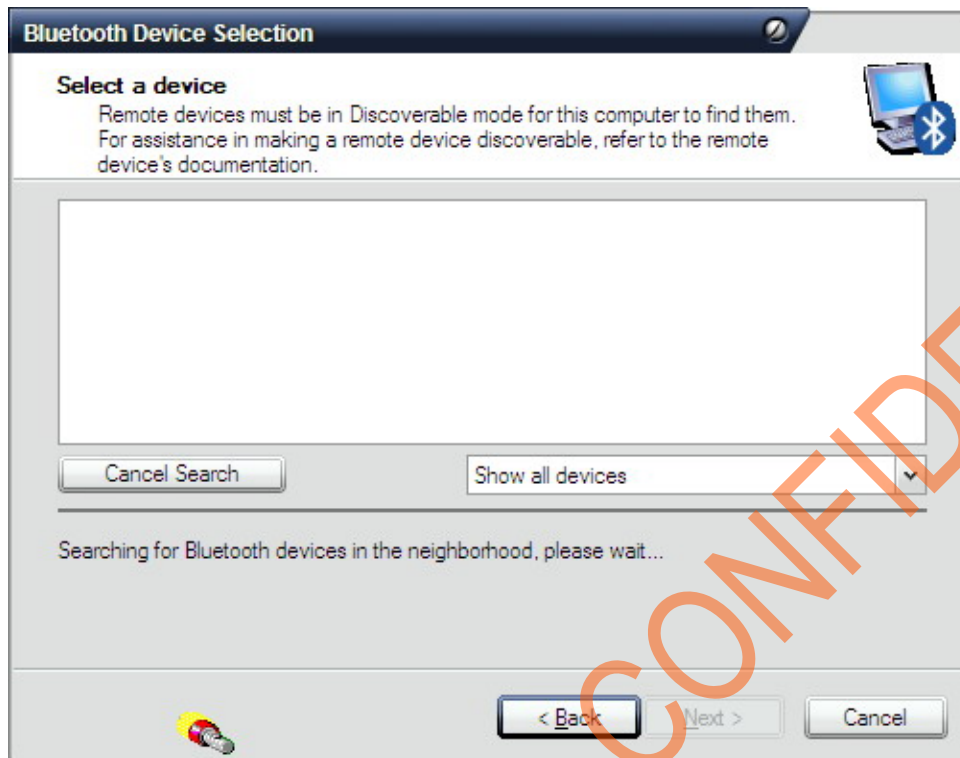
- 1) Go to the Bluetooth icon located on your desktop or laptop computer and double click. Please click "Add Bluetooth Devices". Choose "Add a Bluetooth Device" on left side menu.



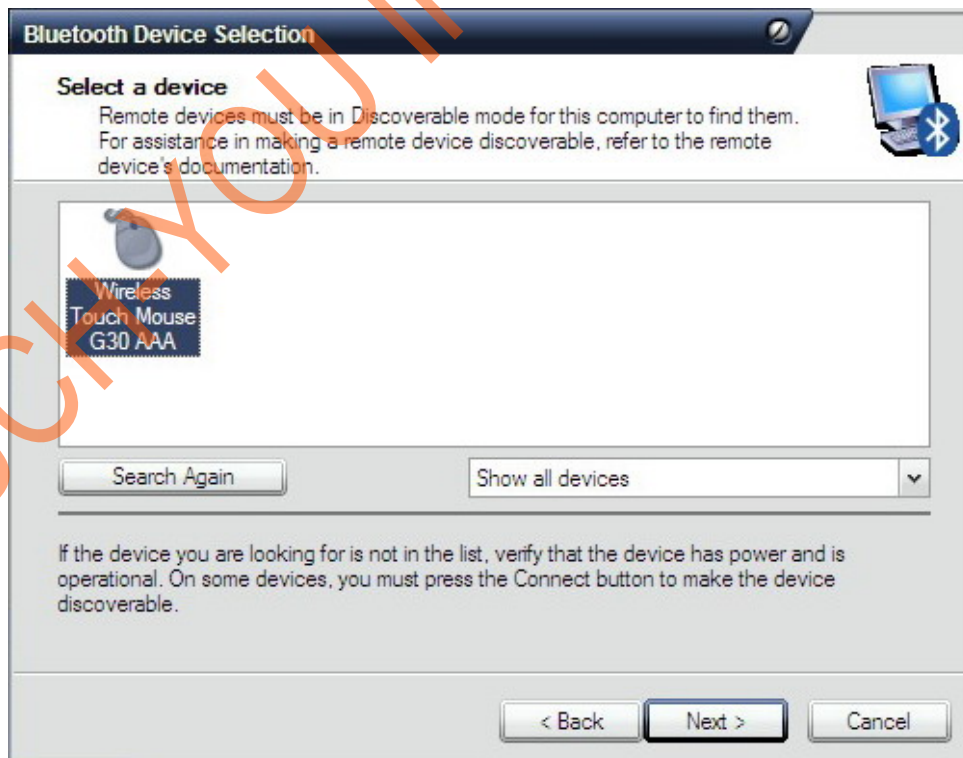
- 2) Please check the indicator light on the **Pebble Touch Presenter Mouse** by Blue LED Speedy Blink. Then please click "**Next**".



- 3) The “Bluetooth Device Selection” will start searching for Bluetooth Devices.



- 4) Please click “ **Wireless Touch Mouse G30** ” and click “**Next**”.

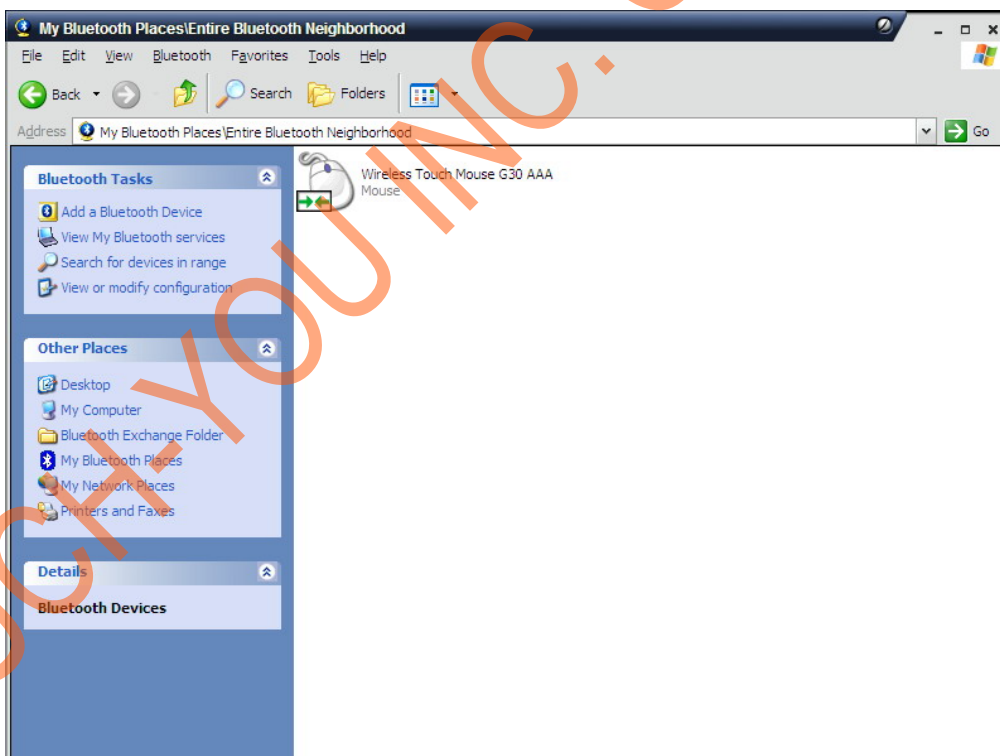


5) Please click " **Click here: 55**" to finish the pairing.



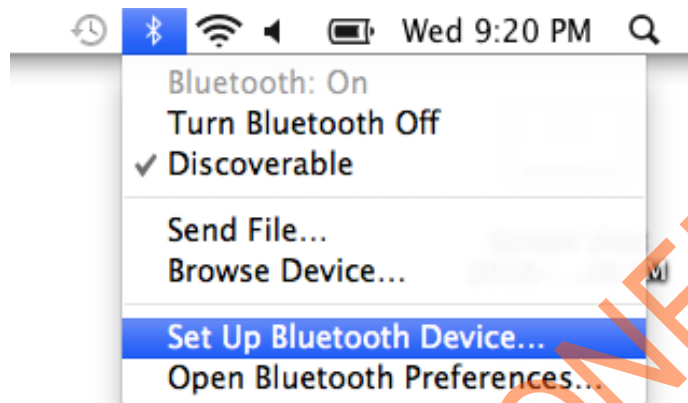
6) " **Wireless Touch Mouse G30** " will appear in the "**Bluetooth Settings**" window.

Now **Pebble Touch Presenter Mouse** be paired successfully.



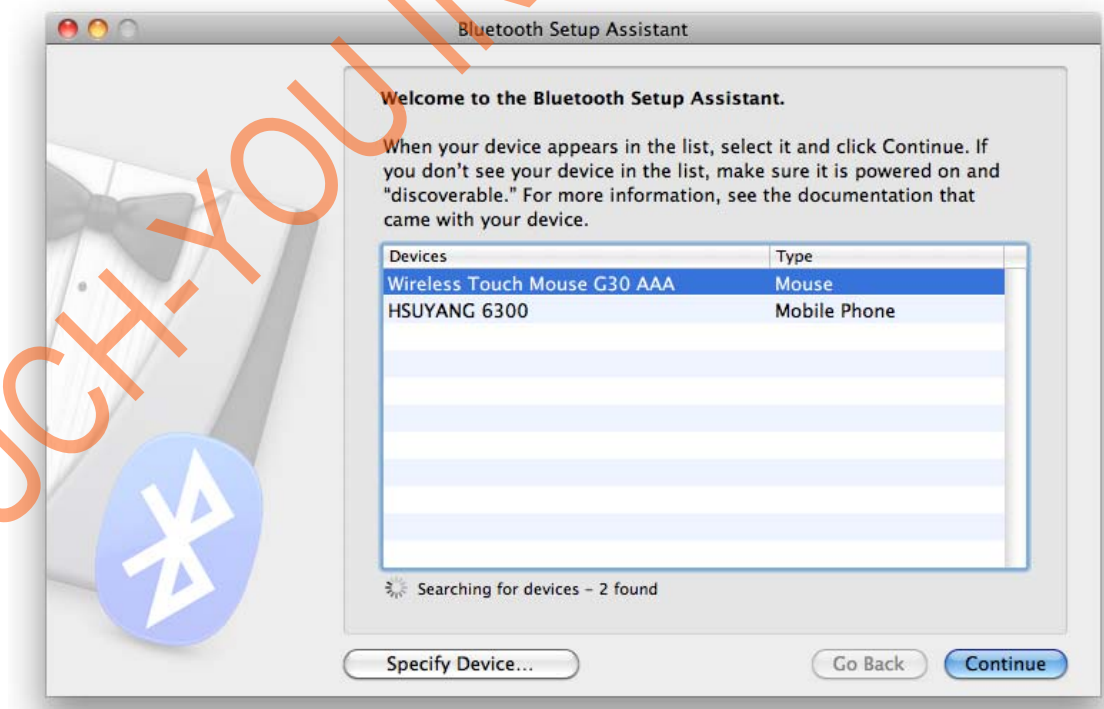
MAC Application:

- 1) Please check the indicator light on the **Pebble Bluetooth Touch Presenter Mouse** by Blue LED Speedy Blink.
Go to the Bluetooth icon located on your MAC and Click. Please choose "**Set Up Bluetooth Device**"

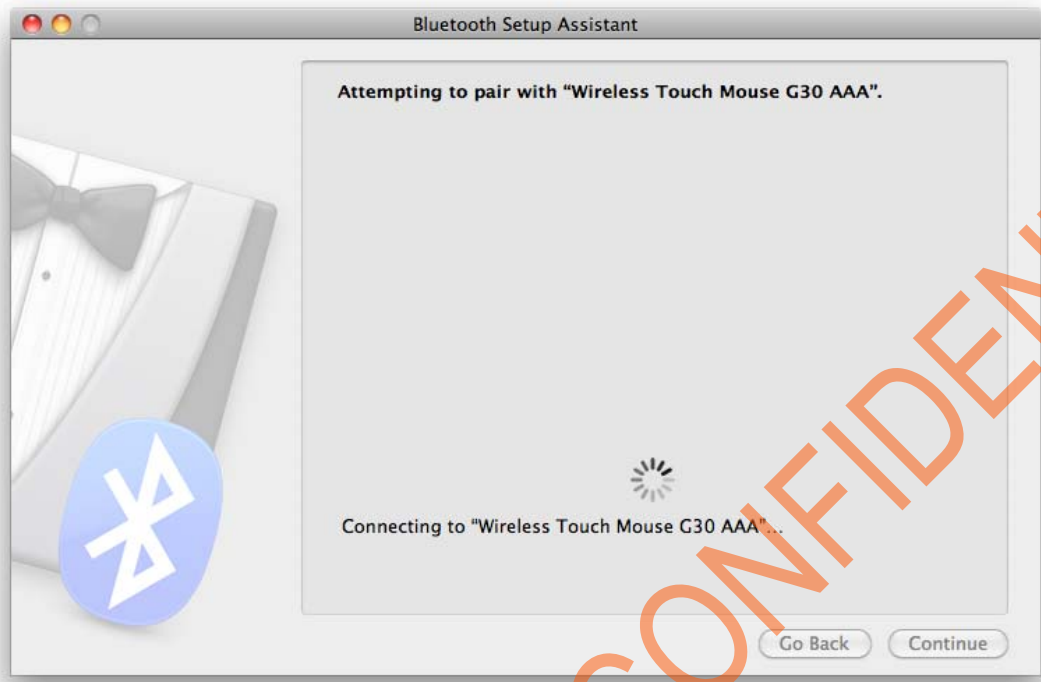


- 2) The "**Bluetooth Setup Assistant**" will start searching for Bluetooth Devices.

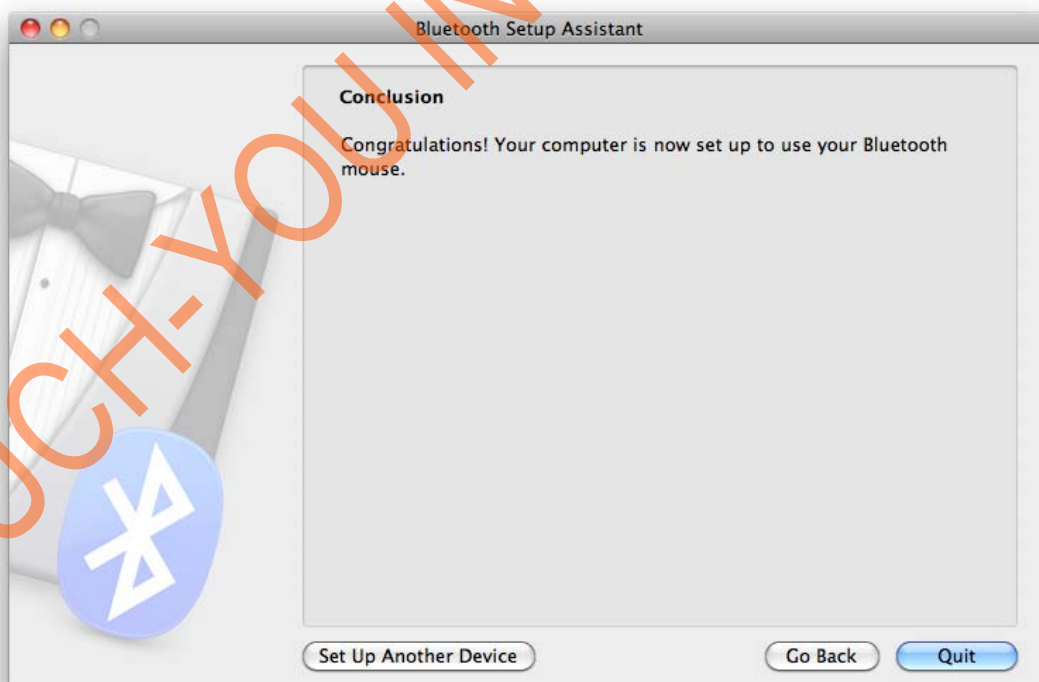
Please click " **Wireless Touch Mouse G30** " → "**Continue**".



- 3) The "**Bluetooth Setup Assistant**" will start connecting to "**Wireless Touch Mouse G30**".

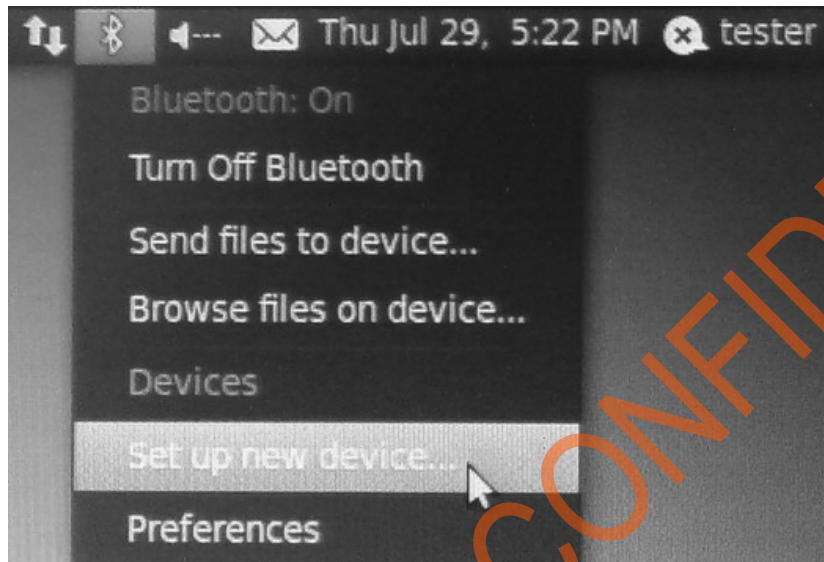


- 4) Now **Pebble Touch Presenter Mouse** be paired successfully. Please click "Quit" to finish the pairing.



Linux Application:

- 1) Go to the Bluetooth icon located on your Linux desktop or laptop computer and Click. Please choose "**Set Up New Device**"



- 2) Please check the indicator light on the **Pebble Bluetooth Touch Presenter Mouse** by Blue LED Speedy Blink. Then please click "**Forward**"



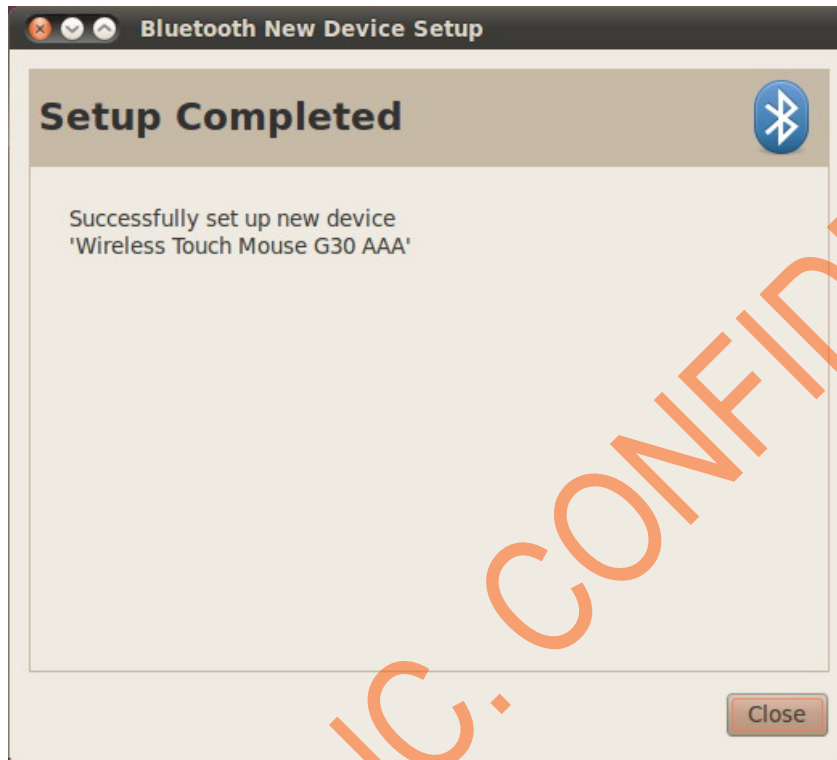
- 3) The “**Bluetooth New Device Setup**” will start searching for “ **Wireless Touch Mouse G30** ”. Please click “ **Wireless Touch Mouse G30** ”and click “**Forward**”



- 4) The “**Bluetooth New Device Setup**” will start connecting to “ **Wireless Touch Mouse G30** ”.



5) Now **Pebble Touch Presenter Mouse** be paired successfully.







TOUCH PRESENTER MOUSE LED DESCRIPTIONS





| LED Descriptions for operating | | | |
|--------------------------------|-----------------|---|------------------------|
| Item | Status | Descriptions | LED |
| 1 | Turn On | Press the button from back of mouse. | LED ON |
| 2 | Turn Off | 1. Press the button from back of mouse. 2. There have no anyone Bluetooth devices detected | LED OFF |
| 3 | Pairing Process | With PC/NB in process of Pair | LED Speedy Blink |
| 4 | Connection OK | The connection is successful between Mouse and PC/NB. | LED Blink like breathe |
| 5 | Disconnection | There have no anyone Bluetooth devices detected | LED ON |
| 6 | Sleep Mode | Don't execute the mouse working. | LED OFF |

| LED Descriptions for Electricity | | |
|----------------------------------|---|-----------|
| Item | Descriptions | LED |
| 1 | Batteries are charged | Blue LED |
| 2 | Batteries are low | RED LED |
| 3 | <ul style="list-style-type: none"> ● AAA-size batteries : Electricity source by USB micro B cable ● Li-ion battery : Flexible recharge by USB micro B cable | Green LED |
| 4 | Out of Electricity / Power OFF | No LED |

TOUCH MOUSE OPERATING MODE

| Item | Descriptions | Diagram |
|------|--|---|
| 1 | Left / Right button : One click / Double-click at left or right side. |  |
| 2 | Middle : Double-click and move the mouse at middle side. |  |
| 3 | Slide : Slide from up to down at middle side. |  |
| 4 | Drag : Double-click , please hold and move the mouse at left or right or middle side. |  |

TOUCH PRESENTER OPERATING MODE

| Item | Descriptions | Diagram |
|------|---|--|
| 1 | Presentation in PDF / Power point : Please hold the Touch Mouse device directly. |  |
| 2 | Switch / Slide Show : Double-click |  |
| 3 | Page-Down : Swipe left to right side |  |
| 4 | Page-Up : Swipe right to left side |  |

REGULATORY COMPLIANCE

Federal Communications Commission (FCC) Statement

15.21

You are cautioned that changes or modifications not expressly approved by the party responsible for compliance could void the user's authority to operate the equipment.

15.105(b)

This equipment has been tested and found to comply with the limits for a Class B digital device, pursuant to part 15 of the FCC rules. These limits are designed to provide reasonable protection against harmful interference in a residential installation. This equipment generates, uses and can radiate radio frequency energy and, if not installed and used in accordance with the instructions, may cause harmful interference to radio communications. However, there is no guarantee that interference will not occur in a particular installation. If this equipment does cause harmful interference to radio or television reception, which can be determined by turning the equipment off and on, the user is encouraged to try to correct the interference by one or more of the following measures:

- Reorient or relocate the receiving antenna.
- Increase the separation between the equipment and receiver.
- Connect the equipment into an outlet on a circuit different from that to which the receiver is connected.
- Consult the dealer or an experienced radio/TV technician for help.

You are cautioned that changes or modifications not expressly approved by the party responsible for compliance could void your authority to operate the equipment.

FCC RF Radiation Exposure Statement:

This equipment complies with FCC radiation exposure limits set forth for an uncontrolled environment. End users must follow the specific operating instructions for satisfying RF exposure compliance. This transmitter must not be co-located or operating in conjunction with any other antenna or transmitter.

Notice: Any changes or modification not expressly approved by the party responsible could void the user's authority to operate the device.

This device complies with Part 15 of the FCC Rules. Operation is subject to the following two conditions:

This device may not cause harmful interference, and

This device must accept any interference received, including interference that may cause undesired operation.