



dli

DLI 8800 Mobile POS Tablet

Product Manual

Rev. 2

Disclaimer

Data Ltd., Inc. (DLI) reserves the right to make changes in specifications and other information contained in this document without prior notice, and the reader should in all cases consult DLI to determine whether any such changes have been made. The information in this publication does not represent a commitment on the part of DLI.

DLI shall not be liable for technical or editorial errors or omissions contained herein: nor for incidental or consequential damages resulting from the furnishing performance, or use of this material.

This document contains proprietary information that is protected by copyright. All rights are reserved. No part of this document may be photocopied, reproduced, or translated into another language without the prior written consent of DLI.

© 2011 Data Ltd., Inc. All rights reserved.

Web Address: www.data ltd.com

Trademarks

DLI 8800 is a trademark or registered trademark of Data Ltd., Inc.

Windows CE, Windows XP, Windows Embedded XP, Windows Tablet PC, ActiveSync, and the Windows logos are trademarks or registered trademarks of Microsoft Corporation.

The Adaptus trademark is owned by Honeywell Inc., and licensed to DLI

The Symbol & Motorola trademarks are owned by Motorola Corporation, USA and licensed to DLI

The PenMount trademarks are owned by PenMount International Corp. and licensed to DLI
Other product names mentioned in this manual may be trademarks or registered trademarks of their respective companies and are hereby acknowledged.

Table of Contents

| | |
|---|----|
| Thank You!..... | 4 |
| DLI 8800 Peripherals and Accessories | 4 |
| Hardware Overview | 5 |
| Setting Up the DLI 8800 Terminal..... | 8 |
| Unpack the Carton and Verify its Contents | 9 |
| Battery Status LED's | 9 |
| Charging the Battery in the DLI 8800..... | 9 |
| Power Management Utility..... | 10 |
| Adjusting the Backlight | 11 |
| Using the Stylus | 12 |
| Using the Programmable Keys | 14 |
| SIM Card Insertion | 18 |
| Using the RS-232 DB9M | 19 |
| Using the Barcode Scanner | 22 |
| Biometric Reader | 22 |
| Shipping your DLI Device | 23 |
| Technical Assistance..... | 25 |
| Product Service and Repair | 25 |
| Limited Warranty | 25 |
| Regulatory and Safety Approvals for the DLI 8800..... | 26 |
| FCC Compliance | 27 |



Thank You!

Data Ltd Inc. would like to thank you for selecting the DLI 8800. The DLI 8800 was designed as a forward thinking product that is modular in design and upgradeable. We thank you the customer for giving us the inspiration for the following features:

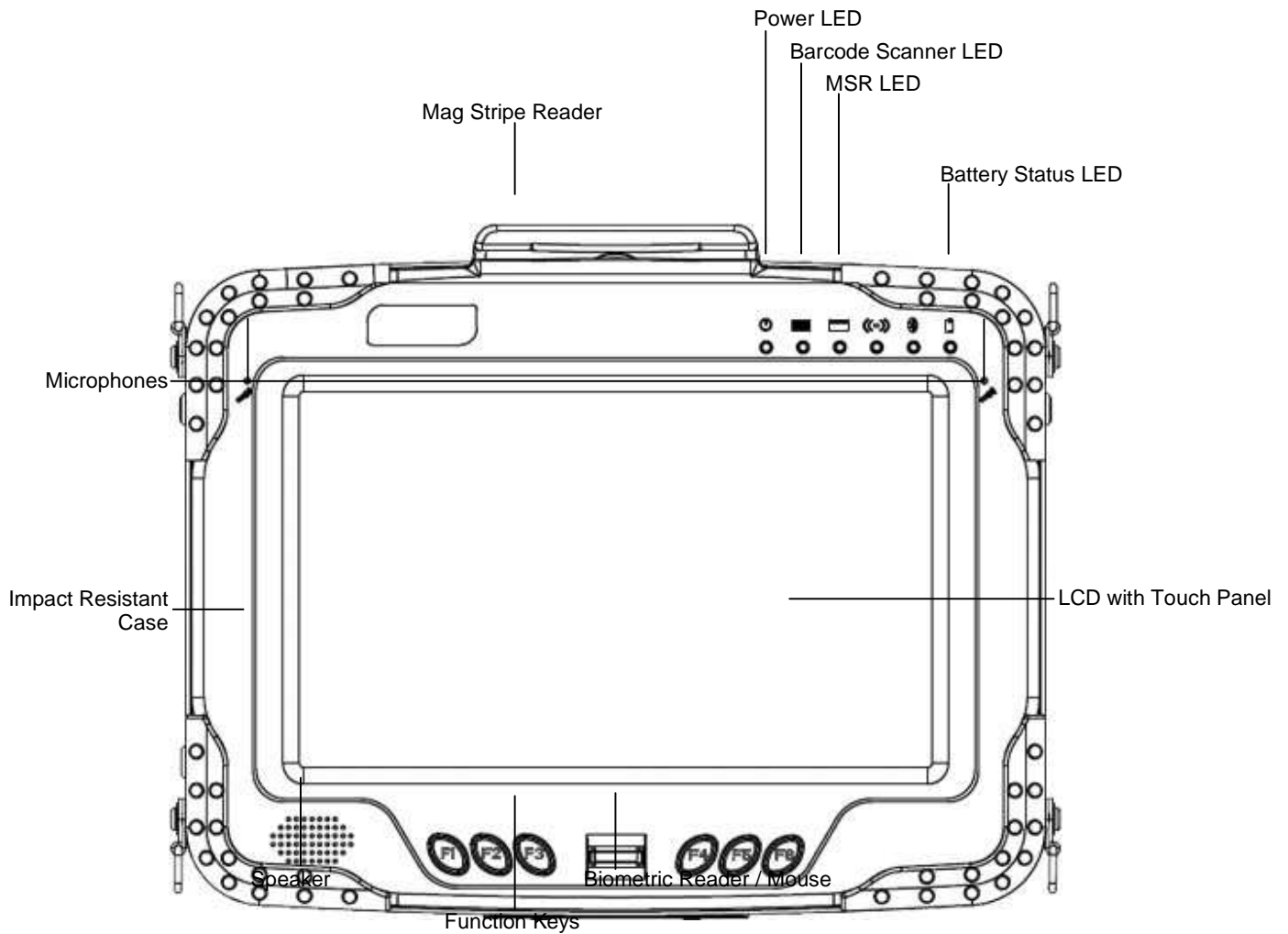
- Impact Resistant Case
- Ergonomic form factor and lightweight design
- Programmable Function Keys
- Integrated three radio technology (Wifi)
- Boot media via SSD (Solid State Drive) or HDD (Hard Disk Drive)

DLI 8800 Peripherals and Accessories

| | |
|----------------|--|
| 2214014250004P | 2500mAh, Lithium-Ion Battery Pack. (Spare) |
| 5422112880900P | AC Wall Adapter Requires Line Cord |
| 5412202880900P | In-Vehicle Power Adapter, 11~27V DC Input, 4ft Input Cable with In-Line 10AMP ATC Fuse 12ft Output Cable with Barrel Connector |
| 8800-3B-CHG | 3-Bay Battery Charger Requires AC Adapter with Country-specific Line Cord. |

Hardware Overview

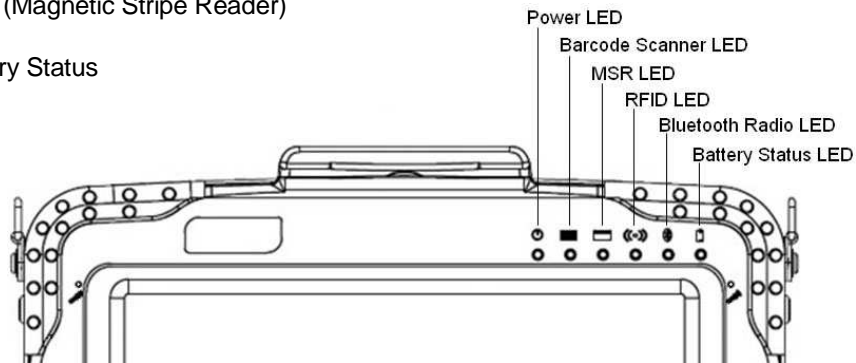
Front Panel



Front Panel Status Indicator Lights

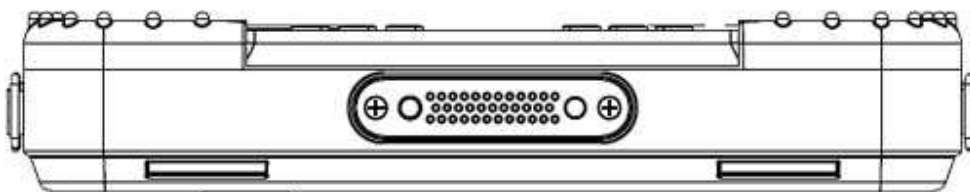
The front panel includes status indicator lights for the following:

- Power On / Off
- Barcode Scanner
- MSR (Magnetic Stripe Reader)
- Battery Status



| Indicator Light | Status | Description |
|-----------------|-------------|---|
| Power | Solid Green | Powered On |
| Barcode Scanner | Solid Red | Scanning |
| | Flash Green | Good Scan |
| MSR | Solid Green | On |
| | Flash Green | Good Read |
| | Flash Red | Bad Read |
| | No Light | Disabled or Not Available |
| Battery Status | | Refer to Battery Status LED section. Page 9 |

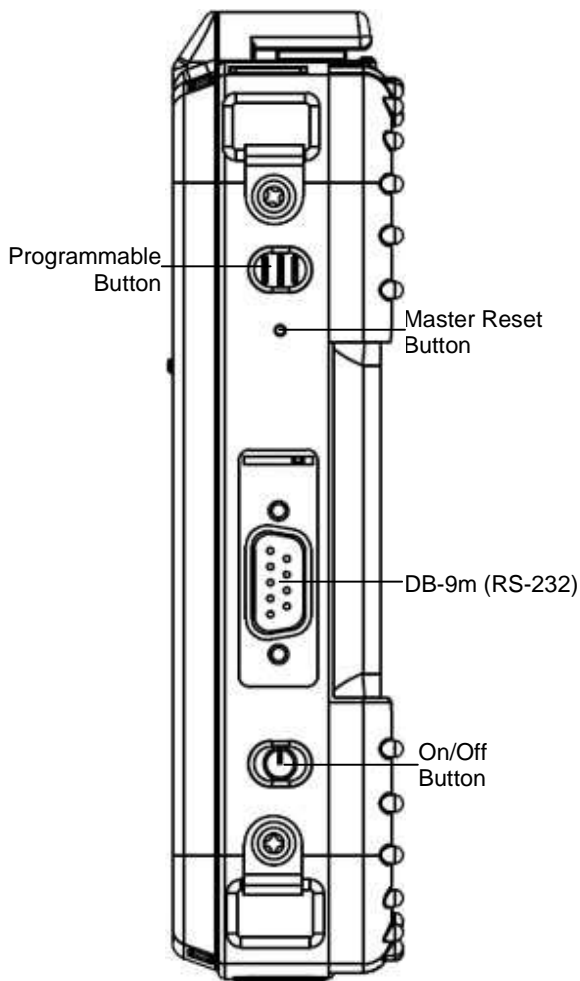
Bottom Panel



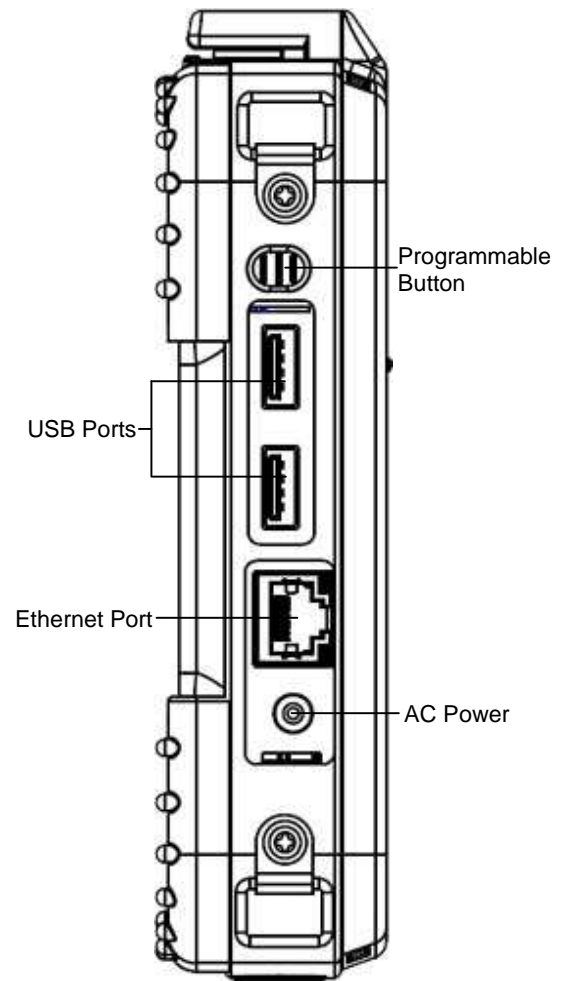
Bottom Panel Feature

Side Panels

Left Side



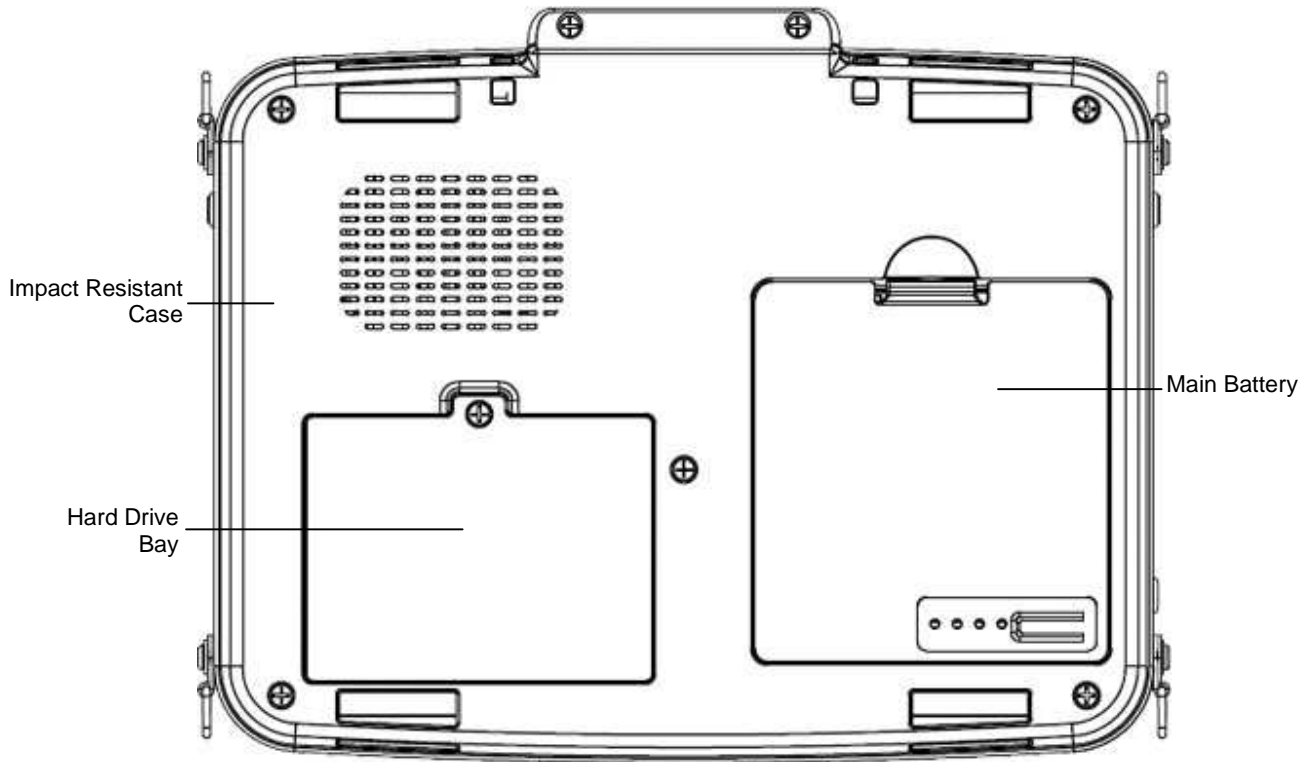
Right Side



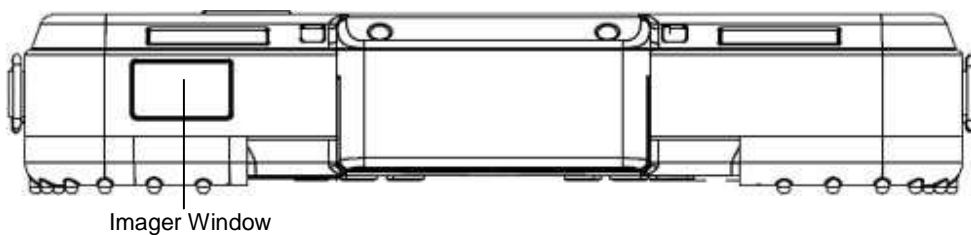
Side Panel Features

- Standard Ethernet Port (RJ-45)
- Standard Serial Port (RS-232 DB9) See Page. 29
- Standard USB, industrial grade connectors. Only DLI authorized peripherals should be attached to these USB ports. The USB port power is rated to 1A.

Back Panel



Top Panel



Setting Up the DLI 8800 Terminal

1. Unpack the carton and verify its contents. – Page 9
3. Charge the battery for 3hrs.
4. Power on the terminal via the power button on the left side of the terminal.
5. Let the device load and end on the Desktop screen.

Unpack the Carton and Verify its Contents

Verify that the carton contains the following items:

- DLI 8800 Industrial Tablet Computer (terminal)
- DLI 8800-BAT Battery



If you ordered peripherals and/or accessories, verify that they are also included with the order.

Be sure to keep the original packaging in case the DLI 8800 needs to be returned for service— See page 37.

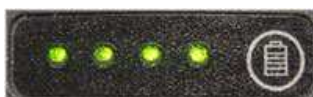
Battery Status LED's

On Power Source (Charger)

| Battery Indicator Light | Status | Description |
|-------------------------|-----------------|------------------------------|
| Power | Solid Green | Powered On |
| Battery | Solid Green | Capacity level = 100% |
| | Blinking Green | Capacity level > 70% |
| | Blinking Yellow | Capacity level > 20% - < 70% |
| | Blinking red | Capacity level < 20% |

Off Power Source (No Charger)

| Battery Indicator Light | Status | Description |
|-------------------------|--------------|------------------------------|
| Power | Solid Green | Powered On |
| Battery | Solid Green | Capacity level > 70% |
| | Solid Yellow | Capacity level < 70% - > 20% |
| | Solid Red | Capacity level < 20% - > 10% |
| | Blinking red | Capacity level < 10% |



Push Button Battery Life Status

All DLI 8800 batteries have a Battery Life Status. Push the battery symbol and LEDs show the life status. Each LED is ~25%



For charging, use only Data Ltd. Inc., DLI 8800 peripherals and the power cables. Use of peripherals or cables not sold/manufactured by Data Ltd will void the warranty and may damage the terminal.

Charging the Battery in the DLI 8800

1. Connect the DLI 8800 to the power supply provided by Data Ltd.
2. The battery will begin charging immediately
3. Charge the battery for three hours, then power on the terminal.



Due to the nature of Lithium Ion, be sure to periodically charge your batteries, as months of inactivity can have a long-term negative effect on the life of the battery.



The battery will charge even if the terminal is in use as long as AC is applied to the terminal.

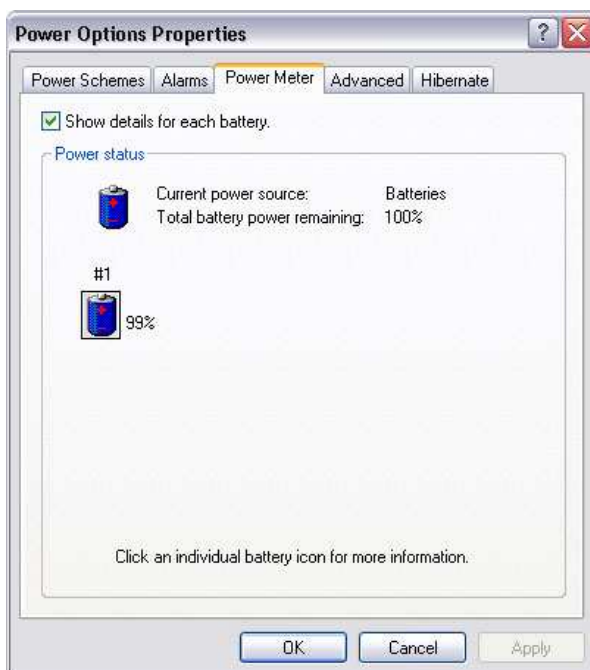
Checking the Battery Power

The battery power can be checked from two areas on the DLI 8800. The battery icon will provide a graphical representation of the remaining battery power.

1. Tap on the battery icon in the system task bar.



2. The power meter is also accessible via the **control panel**, tapping on **power options** and choosing the **power meter** tab



Power Management Utility

The DLI 8800 includes a comprehensive suite of power management functions. The power management is based upon the ACPI Standard (Advanced Configuration and Power Interface Specification) and is operated within the Embedded Controller (EC) at low level management. A graphical interface is supplied so that customer specific power schemes can be controlled. The Power Management Utility is accessible from the DLI Control Center application as well as from the **control panel** within Windows XP.



Adjusting the Backlight

Brightness levels of the liquid crystal display (LCD) are adjustable based on the lighting conditions. By default the level is set to 7. (0 being the lowest and 7 being the highest level) To adjust the level of backlight:

Start>Control Panel. Choose the DLI Brightness icon.



Tap “-” or “+” to adjust the brightness. The settings are **auto saved** after adjustment. Tap *Options>Place in system tray* for quick access to this utility.



Using the Stylus

Calibrating and Using the Stylus

Calibration ensures the accuracy of the stylus and adjusts the input angle for each person who uses it. The terminal stores calibration data and settings on a per-user basis.

The stylus functions as a mouse; generally, a tap is the same as a mouse click.

- Tap:** Tap the touch screen once to open menu items and select options.
Drag: Hold the stylus on the screen and drag across the screen to select text and images. Drag in a list to select multiple items.
Right Mouse Click: Holding down the stylus for 3 seconds will activate the right mouse click.

Calibration:

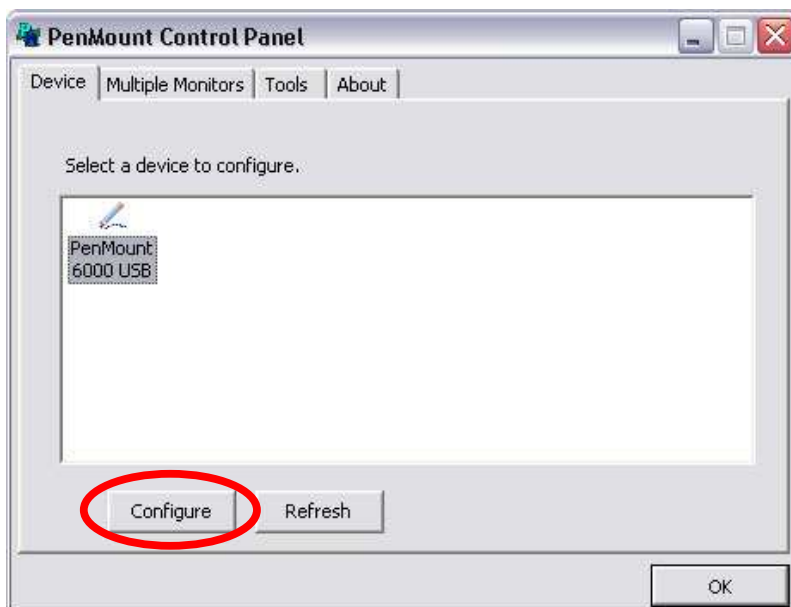
1. Right tap on the PenMount icon in the system tray.



2. Select the PenMount Control Panel.



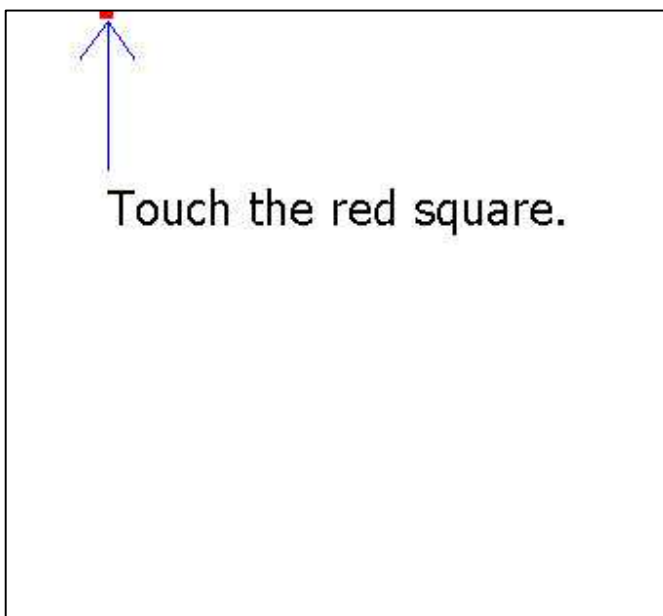
3. Chose the PenMount 6000 USB icon and tap the Configure button.



4. Tapping on the Calibration button will prompt the user to tap multiple points on the screen.



5. Hold the stylus naturally as if you were writing with a ball point pen, holding the stylus down on each red point as they appear. During calibration, position the terminal as close to the way you would use it.



- After completion the screen returns to the Standard Calibration window. Selecting OK will save the settings. Tapping Standard Calibration will start the process again.



- The calibration is now complete and the PenMount Control Panel window is displayed. Select OK to close the application down. The PM icon will still be present in the system tray for quick configuration should your touch screen need recalibration.



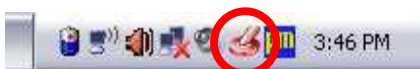
Do not write on the terminal display with ink pens or other sharp objects that may damage the display.

Using the Programmable Keys

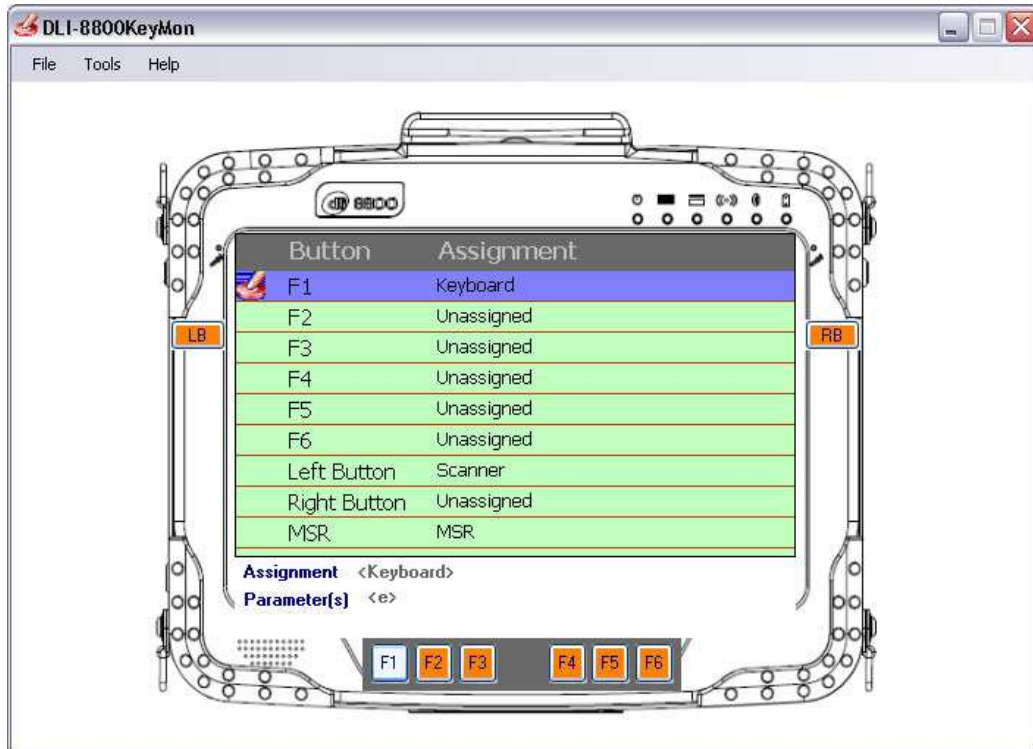
The DLI 8800 has 8 integrated function keys. Each of the keys is user configurable via the DLI KeyMon Utility. The keys can be assigned to perform executable applications or to Data Ltd. predefined functions. The predefined functions are as follows: Right button assigned to activate the imager and Left button assigned to DLI Camera.

The DLI KeyMon utility can be launched from the system tray or from the **Start>Programs>DLI>DLI KeyMon**. The procedure below will assist you in defining the keys.

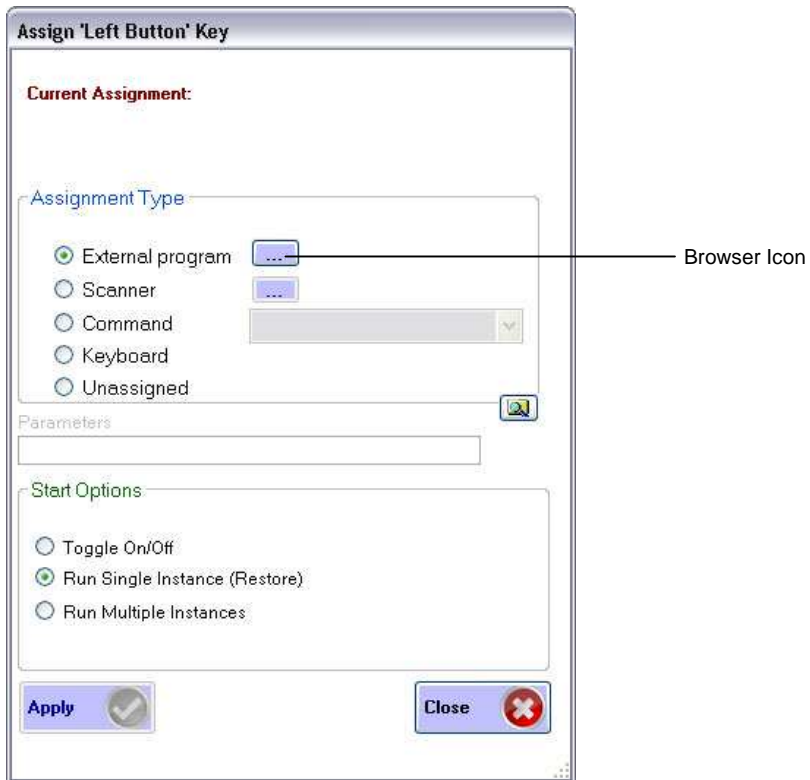
- Tap on the DLI KeyMon icon in the system tray



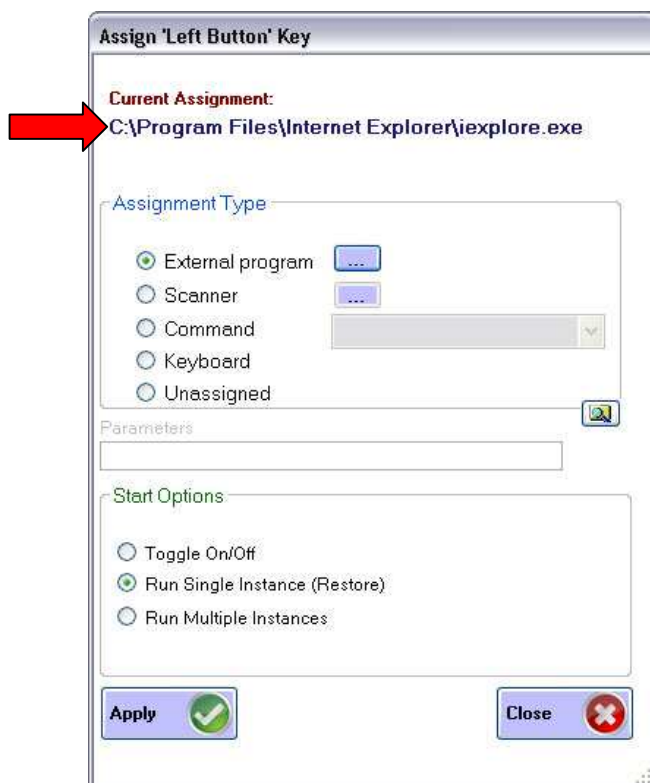
2. The DLI KeyMon screen is presented. Choose a key that requires a definition by tapping on the orange keys or by highlighting the key in the button assignment area and then double tapping.



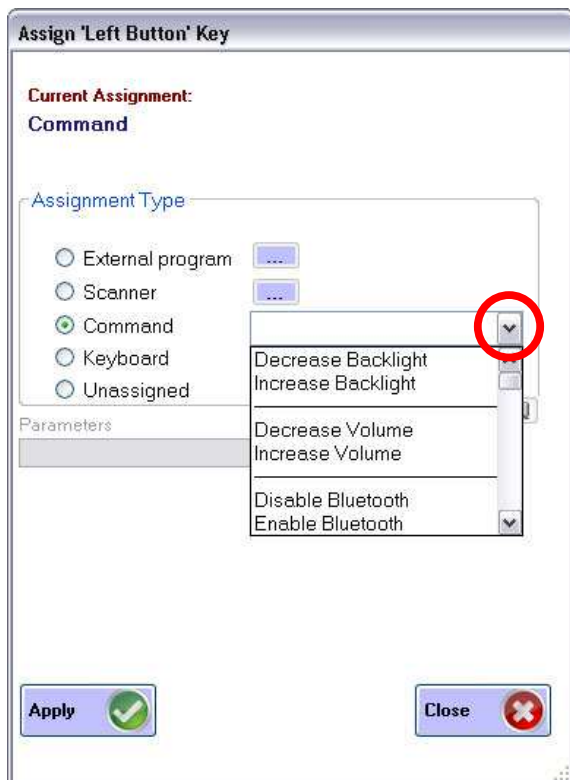
3. There are 5 options for key assignment. Choose the assignment that is required for the key.
4. To assign an application choose **External program** and tap on the browser icon. (See page. 16)



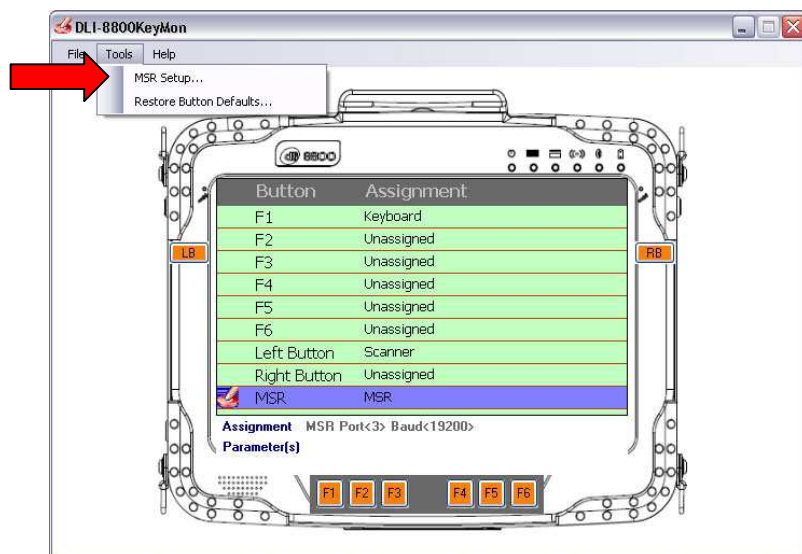
- The user is returned to the assign menu once the selection has been chosen from the browser icon. Selecting the apply button saves the change to the key. The path to the application will appear in blue below the Current Assignment:



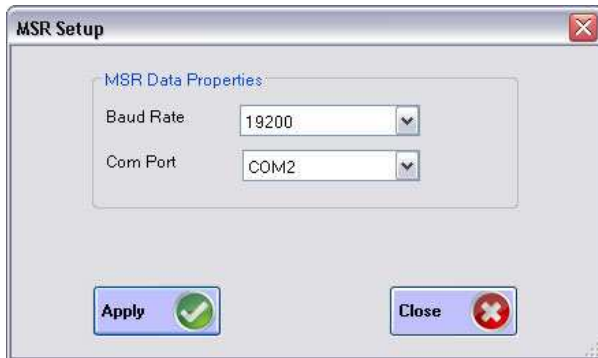
- To select a predefined action or keystroke choose **Command** and tap the down arrow to display a drop menu.



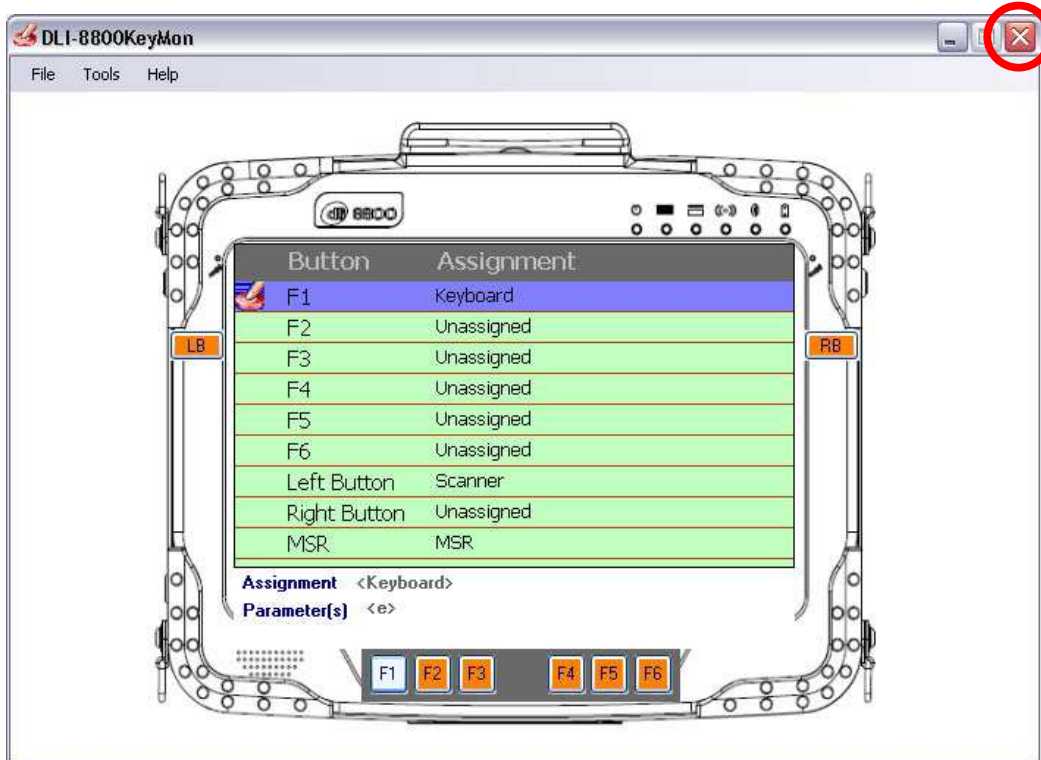
- The drop menu has a list of various actions and keystrokes to choose from. Once you have selected the command, tap the apply button to save.
- The DLI KeyMon program can be used to send data received by the Mag Stripe Reader (MSR) to the keyboard buffer. To setup your MSR to forward data, Select Tools then MSR Setup or by highlighting the MSR in the button assignment area and then double tapping.



9. The default MSR Data Properties are 19200 Baud Rate and COM2 for the Com Port.



10. To Close the DLI KeyMon tap on the "X" on the top right of the Main Window.



SIM Card Insertion

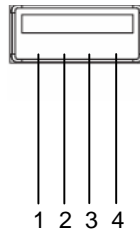
The SIM Card Slot is located in the battery bed of the Main Battery. The SIM Card Slot is intended for use of the MC8790 (GPRS Wireless Radio) **ONLY**. If you are unaware of what type of WWAN Radio you have please contact DLI Technical Support; (800) 526-1299 x774 or support@data1td.com.



The unit must be power down prior to inserting the SIM card. Failure to do so may result in harm to the unit and the SIM.

Using the USB

- Has two standard USB, industrial grade connectors. Only DLI authorized peripherals should be attached to these USB ports. The USB port power is rated to 1A.



USB Port

| Pin # | Description |
|-------|-------------|
| 1 | (+5V) |
| 2 | Data + |
| 3 | Data - |
| 4 | GND |

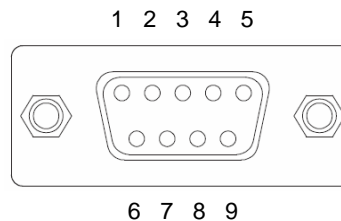
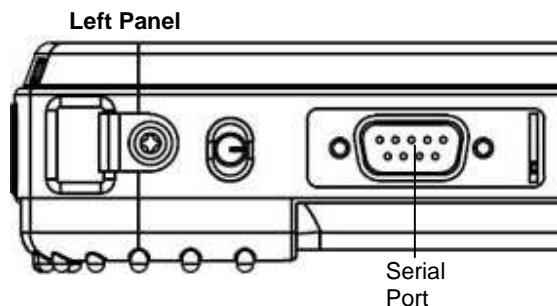
Using the RS-232 DB9M

The integrated RS-232 Port can be configured to work with many peripherals including Barcode Scanners, Printers, OBDII (Vehicle Interface), and Remote Monitoring apparatuses. To configure the RS-232 port so that the data is sent to the keyboard buffer, the following procedure is required. This procedure is typically used when using an external barcode scanner on the device.



All DLI Devices have power to Pin 9.

DO NOT plug-in or unplug any serial devices while the DLI Device is powered on!



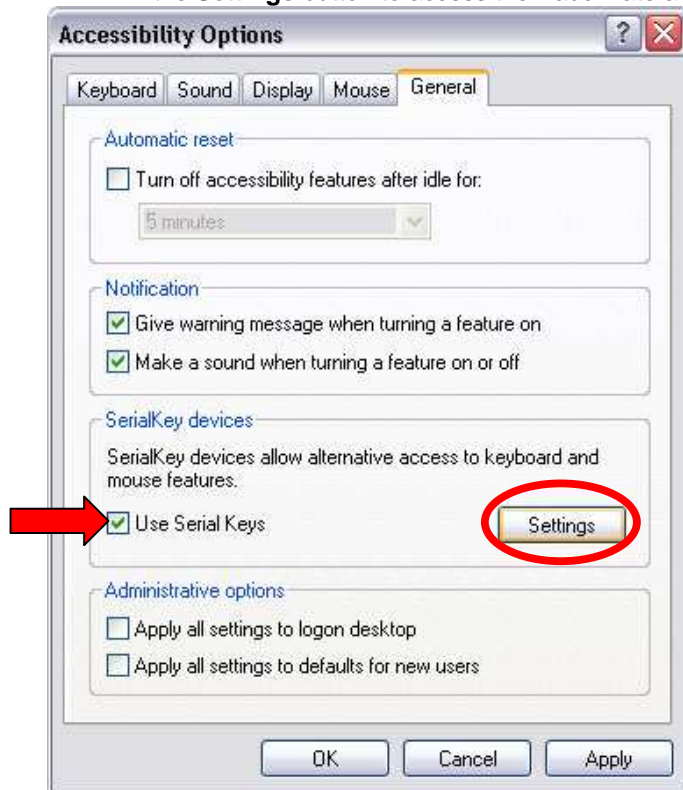
| Pin | Description |
|-----|-------------|
| 1 | DCD |
| 2 | TXD |
| 3 | RXD |
| 4 | DSR |
| 5 | GND |
| 6 | DTR |
| 7 | CTS |
| 8 | RTS |
| 9 | +5V |

1. Open the Control Panel, tap **Start>Control Panel**.

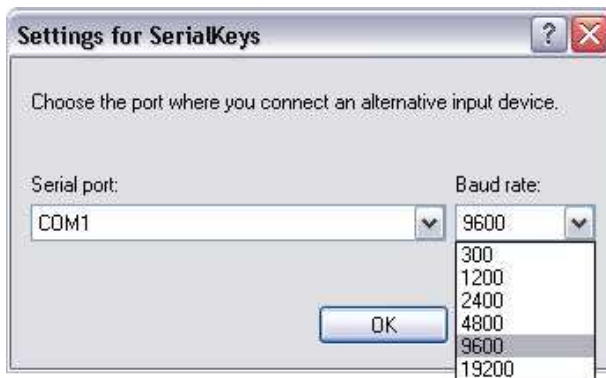
2. Tap on Accessibility Options Icon.



3. Chose the General Tab to configure the RS-232 port and check **Use Serial Keys**. Tap the **Settings** button to access the Baud Rate and COM port that will be configured.



4. Set Serial Port to COM1 and Baud Rate to 9600, tap OK.



5. Save the settings by choosing the Apply button, then tap OK. Now you can plug the device into the RS-232 port.



Using the Barcode Scanner

The DLI 8800 is available with an optional integrated barcode imager for scanning barcodes.

- Honeywell® 5300 Class 2 Standard Range Imager with Cross Hairs (Integrated)

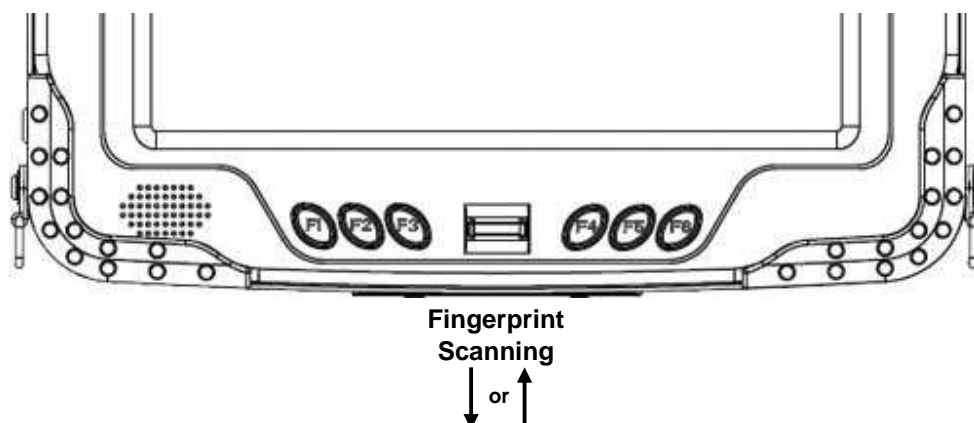
The Imager can be configured by using the DLI 8800 KeyMon (See Page 14).

To Decode a Barcode

1. Point the top of the DLI 8800 terminal directly at the barcode. The Imager faces straight out of the top panel. The Cross Hairs should be oriented in line with the bar code to achieve optimal decoding.
(Distance from barcode should be 2 to 15 inches)
2. Project the Imager and Cross Hairs by pressing and holding the programmed scan button which is set in KeyMon(default is Left Side Button).
3. Center the cross hairs over the barcode.
4. When the barcode is successfully decoded, the decode LED lights green and the terminal beeps. (Bad read, LED lights red)
5. The bar code information is entered into the application in use.

Biometric Reader

The fingerprint reader is located bottom center of the Front Panel and enables you to scan your fingerprint and associate it with passwords. This feature offers a quick and convenient way to log on to your DLI 8800 terminal, provides global password management, and protects your terminal data from unauthorized access.



Shipping your DLI Device

Proper way to pack your DLI device



DO NOT ship any DLI Device without a proper UPS or FedEx container. The DLI Container is not meant for stand-alone shipping.

- Place device in foam cover as shown.



- Place the wrapped DLI device in the correct position in the spacer inside the DLI Container.



- Using a proper UPS or FedEx container, line the bottom with Bubble Wrap, Air Pillows, Packing Foam, etc.



The dimensions of the box shown are 27x17x10.

- Fill the rest of the Shipping Container with packing material.



- Place the closed DLI container inside the lined Shipping Container.



- Seal the Shipping Container and ship to:
Data LTD
703 Data Ltd Parkway
La Porte, IN 46350



Technical Assistance

If you need assistance installing or troubleshooting, please call your DLI Vendor or the Data Ltd. Inc. Technical Support Office.

North America/Canada:

Telephone: (800) 526-1299, Ext 774 (8 AM to 4 PM CST)

Fax number: (219) 362-1937

E-mail: support@data ltd.com

Website: <http://www.data ltd.com/html/support-ticket.html>

Product Service and Repair

Data Ltd. Inc. provides service for all its products through service centers throughout North America. To obtain warranty or non-warranty service, return the unit to Data Ltd. Inc. (postage paid) with a copy of the dated purchase record attached. Contact the appropriate location below to obtain a Return Material Authorization number (RMA #) before returning the product.

Telephone: (800) 526-1299 ext 723

Fax number: (219) 362-1937

E-mail: RMA@data ltd.com

Website: <http://www.data ltd.com/html/request-rma.html>

Limited Warranty

Data Ltd. Inc. warrants its products to be free from defects in materials and workmanship and to conform to Data Ltd. Inc. published specifications applicable to the products purchased at the time of shipment. This warranty does not cover any product which is (i) improperly installed or used; (ii) damaged by accident or negligence, including failure to follow the proper maintenance, service, and cleaning schedule; or (iii) damaged as a result of (A) modification or alteration by the purchaser or other party, (B) excessive voltage or current supplied to or drawn from the interface connections, (C) static electricity or electro-static discharge, (D) operation under conditions beyond the specified operating parameters, or (E) repair or service of the product by anyone other than Data Ltd. Inc. or its authorized representatives.

This warranty shall extend from the time of shipment for the duration published by Data Ltd. Inc. for the product at the time of purchase ("Warranty Period"). Any defective product must be returned (at purchaser's expense) during the Warranty Period to Data Ltd. Inc.'s factory or authorized service center for inspection. No product will be accepted by Data Ltd. Inc. without a Return Materials Authorization, which may be obtained by contacting Data Ltd. Inc. In the event that the product is returned to Data Ltd. Inc. or its authorized service center within the Warranty Period and Data Ltd. Inc. determines to its satisfaction that the product is defective due to defects in materials or workmanship, Data Ltd. Inc., at its sole option, will either repair or replace the product without charge, except for return shipping to Data Ltd. Inc..

EXCEPT AS MAY BE OTHERWISE PROVIDED BY APPLICABLE LAW, THE FOREGOING WARRANTY IS IN LIEU OF ALL OTHER COVENANTS OR WARRANTIES, EITHER EXPRESSED OR IMPLIED, ORAL OR WRITTEN, INCLUDING, WITHOUT LIMITATION, ANY IMPLIED WARRANTIES OF MERCHANTABILITY OR FITNESS FOR A PARTICULAR PURPOSE.



DATA LTD. INC.'S RESPONSIBILITY AND PURCHASER'S EXCLUSIVE REMEDY UNDER THIS WARRANTY IS LIMITED TO THE REPAIR OR REPLACEMENT OF THE DEFECTIVE PRODUCT. IN NO EVENT SHALL DATA LTD. INC. BE LIABLE FOR INDIRECT, INCIDENTAL, OR CONSEQUENTIAL DAMAGES, AND, IN NO EVENT, SHALL ANY LIABILITY OF DATA LTD. INC.'S ARISING IN CONNECTION WITH ANY PRODUCT SOLD HEREUNDER (WHETHER SUCH LIABILITY ARISES FROM A CLAIM BASED ON CONTRACT, WARRANTY, TORT, OR OTHERWISE) EXCEED THE ACTUAL AMOUNT PAID TO DATA LTD. INC. FOR THE PRODUCT. THESE LIMITATIONS ON LIABILITY SHALL REMAIN IN FULL FORCE AND EFFECT EVEN WHEN DATA LTD. INC. MAY HAVE BEEN ADVISED OF THE POSSIBILITY OF SUCH INJURIES, LOSSES, OR DAMAGES. SOME STATES, PROVINCES, OR COUNTRIES DO NOT ALLOW THE EXCLUSION OR LIMITATIONS OF INCIDENTAL OR CONSEQUENTIAL DAMAGES, SO THE ABOVE LIMITATION OR EXCLUSION MAY NOT APPLY TO YOU.

All provisions of this Limited Warranty are separate and severable, which means that if any provision is held invalid and unenforceable, such determination shall not affect the validity of enforceability of the other provisions hereof.

Data Ltd. Inc., Inc. extends these warranties only to the first end users of the products. These warranties are non-transferable.

The limited duration of the warranty for the DLI 8800 is as follows:

- DLI 8800 terminal with integrated modules are covered by a one-year limited warranty.
- Touch screens are covered by a one-year limited warranty.
- DLI 8800 3-Bay Battery Charger, and 3-Way Battery Adapter Cable, are covered by a one-year limited warranty.
- The limited duration of the warranty for batteries is one year. Use of any battery not sold/ manufactured by Data Ltd. Inc. may damage the terminal and/or the battery and will void the warranty. Batteries returned to Data Ltd. Inc. in a reduced state may or may not be replaced under this warranty. Battery life will be greatly increased when following the battery instructions in the DLI 8800 User's Guide.
- Use of any peripheral not manufactured/sold by Data Ltd. Inc. will void the warranty. This includes but is not limited to: cables, power supplies, and docking stations.

Regulatory and Safety Approvals for the DLI 8800

DLI 8800 terminal meets or exceeds the requirements of all applicable standards organizations for safe operation. However, as with any electrical equipment, the best way to ensure safe operation is to operate them according to the agency guidelines that follow. Please read these guidelines carefully before using your DLI 8800 terminal.

Embedded Safety Information Text

DLI 8800 RF terminal is designed to comply with the most current applicable standards on safe levels of RF energy developed by the Institute of Electrical and Electronics Engineers (IEEE) and the American National Standards Institute (ANSI) and has been recommended for adoption by the Federal Communications Commission (FCC).

| Parameter | Specification |
|---------------------------------------|--|
| U.S.A Canada European Community | FCC Part 15, Class B ICES-003 EN 55022 (CISPR 22) Class B EN60950:2000 EN60825-1:1994 + A11 + A2 EN55024:1998 |



The CE Mark on the product indicates that the system has been tested to and conforms to the provisions noted within the 89/336/EEC Electromagnetic Compatibility Directive and the 73/23/EEC and 93/68/EEC Low Voltage Directive.

For further information, please contact:

Data Ltd. Inc.
703 Data Ltd Parkway
P.O. Box 761
La Porte, IN 46352 USA
(800) 526-1299

Data Ltd. Inc. shall not be liable for use of our product with equipment (i.e., power supplies, personal computers, etc.) that is not CE marked and does not comply with the Low Voltage Directive

FCC Compliance

This device complies with Part 15 of the FCC Rules. Operation is subject to the following two conditions: (1) this device may not cause harmful interference, and (2) this device must accept any interference received, including interference that may cause undesired operation.

This equipment has been tested and found to comply with the limits for a Class B digital device pursuant to Part 15 of the FCC Rules. These limits are designed to provide reasonable protection against harmful interference in a residential installation. This equipment generates, uses, and can radiate radio frequency energy and, if not installed and used in accordance with the instructions, may cause harmful interference to radio communications. If this equipment does cause harmful interference to radio or television reception, which can be determined by turning the equipment off and on, the user is encouraged to try to correct the interference by one or more of the following measures:

- Reorient or relocate the receiving antenna.
- Increase the separation between the equipment and receiver.
- Connect the equipment into an outlet on a circuit different from that to which the receiver is connected.
- Consult the dealer or an experienced radio/TV technician for help.

If necessary, the user should consult the dealer or an experienced radio/television technician for additional suggestions. The user may find the following booklet helpful: "Something About Interference." This is available at FCC local regional offices. Our company is not responsible for any radio or television interference caused by unauthorized modifications of this equipment or the substitution or attachment of connecting cables and equipment other than those specified by our



company. The correction is the responsibility of the user. Use only shielded data cables with this system. In accordance with FCC 15.21, changes or modifications not expressly approved by the party responsible for compliance could void the user's authority to operate the equipment.

RF Exposure Information (SAR)

This device meets the government's requirements for exposure to radio waves.

This device is designed and manufactured not to exceed the emission limits for exposure to radio frequency (RF) energy set by the Federal Communications Commission of the U.S. Government.

The exposure standard for wireless mobile devices employs a unit of measurement known as the Specific Absorption Rate, or SAR. The SAR limit set by the FCC is 1.6W/kg. Tests for SAR are conducted using standard operating positions accepted by the FCC with the device transmitting at its highest certified power level in all tested frequency bands. Although the SAR is determined at the highest certified power level, the actual SAR level of the device while operating can be well below the maximum value. This is because the device is designed to operate at multiple power levels so as to use only the power required to reach the network. In general, the closer you are to a wireless base station antenna, the lower the power output.

The highest SAR value for the device as reported to the FCC when tested for use when worn on the body, as described in this user guide, is 0.561 W/kg. (Body-worn measurements differ among device models, depending upon available accessories and FCC requirements.)

While there may be differences between the SAR levels of various devices and at various positions, they all meet the government requirement.

The FCC has granted an Equipment Authorization for this device with all reported SAR levels evaluated as in compliance with the FCC RF exposure guidelines. SAR information on this device is on file with the FCC and can be found under the Display Grant section of www.fcc.gov/oet/ea/fccid/ after searching on FCC ID: YWE-DLI8800.

This device is compliance with SAR for general population /uncontrolled exposure limits in ANSI/IEEE C95.1-1999 and had been tested in accordance with the measurement methods and procedures specified in OET Bulletin 65 Supplement C.

For body worn operation, this device has been tested and meets the FCC RF exposure guidelines for use with an accessory that contains no metal and the positions the handset a minimum of 0 cm from the body. Use of other accessories may not ensure compliance with FCC RF exposure guidelines.



This device and its antenna must not be co-located or operating in conjunction with any other antenna or transmitter. To maintain compliance with FCC RF exposure guidelines for body-worn operation, do not use accessories that contain metallic components.

When using accessories where the terminal is worn on the body, the terminal's touch screen must face away from the body.

CAUTION! *Any changes or modifications not expressly approved by the grantee of this device could void the user's authority to operate the equipment.*

Canadian Compliance

This Class B digital apparatus complies with Canadian ICES-003. Operation is subject to the following two conditions: (1) this device may not cause harmful interference, and (2) this device



must accept any interference received, including interference that may cause undesired operation.

To prevent radio interference to the licensed service, this device is intended to be operated indoors and away from windows to provide maximum shielding. Equipment (or its transmit antenna) installed outdoors is subject to licensing.

Cet appareil numérique de la Classe B est conforme à la norme NMB-003 du Canada.

For European Community Users

Data Ltd. Inc. complies with Directive 2002/69/EC OF THE EUROPEAN PARLIAMENT AND OF THE COUNCIL of 27 January 2003 on waste electrical and electronic equipment (WEEE).

Waste Electrical and Electronic Equipment Information

This product has required the extraction and use of natural resources for its production. It may contain hazardous substances that could impact health and the environment, if not properly disposed.

In order to avoid the dissemination of those substances in our environment and to diminish the pressure on the natural resources, we encourage you to use the appropriate take-back systems for product disposal. Those systems will reuse or recycle most of the materials of the product you are disposing in a sound way.



The crossed out wheeled bin symbol informs you that the product should not be disposed of along with municipal waste and invites you to use the appropriate separate take-back systems for product disposal.

If you need more information on the collection, reuses, and recycling systems, please contact your local or regional waste administration.

You may also contact your supplier for more information on the environmental performances of this product.



Data Ltd. Inc.
703 Data Ltd. Parkway
P.O. box 761
La Porte, IN 46350

Telephone: (800) 526-1299
Fax number: (219) 362-1937

