

DLI 8400 Rugged Tablet Computer

Product Manual

Disclaimer

Data Ltd., Inc. (DLI) reserves the right to make changes in specifications and other information contained in this document without prior notice, and the reader should in all cases consult DLI to determine whether any such changes have been made. The information in this publication does not represent a commitment on the part of DLI.

DLI shall not be liable for technical or editorial errors or omissions contained herein: nor for incidental or consequential damages resulting from the furnishing performance, or use of this material.

This document contains proprietary information that is protected by copyright. All rights are reserved. No part of this document may be photocopied, reproduced, or translated into another language without the prior written consent of DLI.

© 2011 Data Ltd., Inc. All rights reserved.

Web Address: www.data ltd.com

Trademarks

DLI 8400 is a trademark or registered trademark of Data Ltd., Inc.

Windows CE, Windows XP, Windows Embedded XP, Windows Tablet PC, ActiveSync, and the Windows logos are trademarks or registered trademarks of Microsoft Corporation.

The Adaptus trademark is owned by Honeywell Inc., and licensed to DLI

The Symbol & Motorola trademarks are owned by Motorola Corporation, USA and licensed to DLI

The PenMount trademarks are owned by PenMount International Corp. and licensed to DLI

Other product names mentioned in this manual may be trademarks or registered trademarks of their respective companies and are hereby acknowledged.

Table of Contents

Thank You!	3
DLI 8400 Peripherals and Accessories	3
Hardware Overview	4
Operating Temperatures	8
Setting Up the DLI 8400 Terminal	8
Unpack the Carton and Verify its Contents	9
Battery Status LED's	9
Charging the Battery in the DLI 8400	9
Power Management Utility.....	10
Adjusting the Backlight	11
Integrated Keyboard	12
Using the Stylus.....	14
Using the Programmable Keys.....	16
SIM Card Insertion.....	20
Using the Camera Option	21

Using the RS-232 DB9M	21
Using the Barcode Scanner.....	23
Biometric Reader.....	24
Using GPS	24
DLI 8400 Cradle.....	28
Installing the Vehicle Cradle	31
Shipping your DLI Device	32
Technical Assistance	34
Product Service and Repair.....	34
Limited Warranty.....	34
Regulatory and Safety Approvals for the DLI 8400	35
FCC Compliance	37

Thank You!

Data Ltd Inc. would like to thank you for selecting the DLI 8400. The DLI 8400 was designed as a forward thinking product that is modular in design and upgradeable. We thank you the customer for giving us the inspiration for the following features:

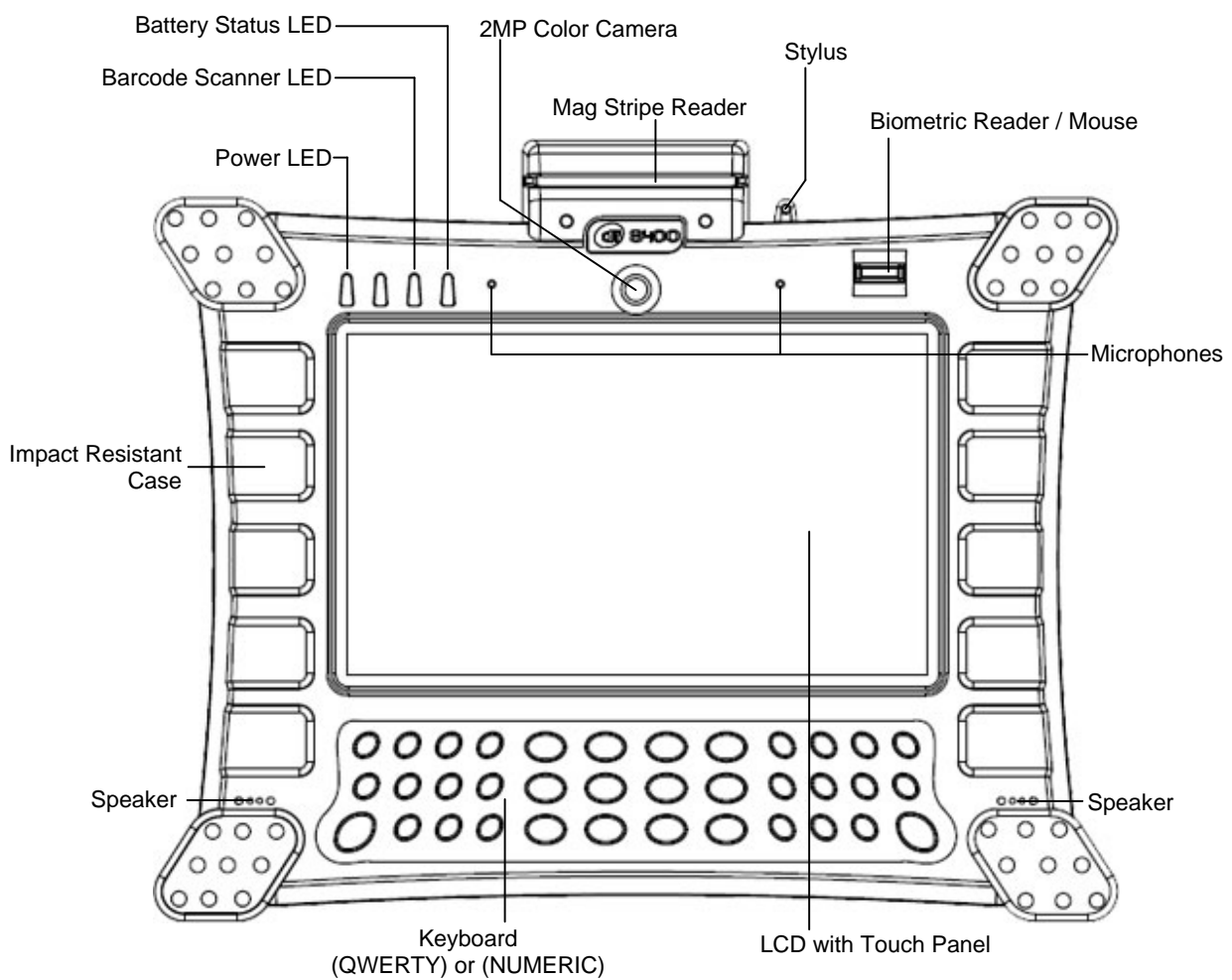
- Impact Resistant Case
- Color Camera with Picture & Video capture
- Ergonomic form factor and lightweight design
- Integrated radio technology (GPS, and Cellular)
- Boot media via SSD (Solid State Drive) or (HDD) (Hard Disk Drive)

DLI 8400 Peripherals and Accessories

8400-VMC-1	Vehicle Mount Cradle w/ 3-USB Locking, 3-RS232 Ports, 1-Power Locking with RAM 202U mounting ball.
8400-VMC-2	Vehicle Mount Cradle w/ 3-USB Locking, 3-RS232 Ports, 1-Power Locking 18PIN GPIO, J1708/J1939 Module, with RAM 202U mounting ball. Requires (18-PIN GPIO Cable) & (4-PIN J1708/J1939 Cable)
8400-VMC-3	Vehicle Mount Cradle w/ 3-USB Locking, 3-RS232 Ports, 1-Power Locking 10V~60VDC/DC Converter, with RAM 202U mounting ball.
8400-VMC-4	Vehicle Mount Cradle w/ 3-USB Locking, 3-RS232 Ports, 1-Power Locking 10V~60VDC/DC Converter, 18PIN GPIO, J1708/J1939 Module, with RAM 202U mounting ball Requires (18-PIN GPIO Cable) & (4-PIN J1708/J1939 Cable)
8400-DTC	Desktop Cradle Requires AC Adapter with Country-specific Line Cord.
2214011250002P	2500mAh, Lithium-Ion Battery Pack. (Spare)
6705190041000P	AC Wall Adapter Requires Line Cord
6705200041000P	Cigarette Lighter Adapter With Standard Adapter. (12-24V DC Input)
8400-3B-CHG	3-Bay Battery Charger Requires AC Adapter with Country-specific Line Cord.

Hardware Overview

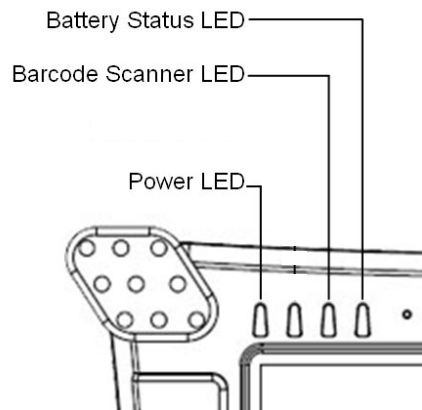
Front Panel



Front Panel Status Indicator Lights

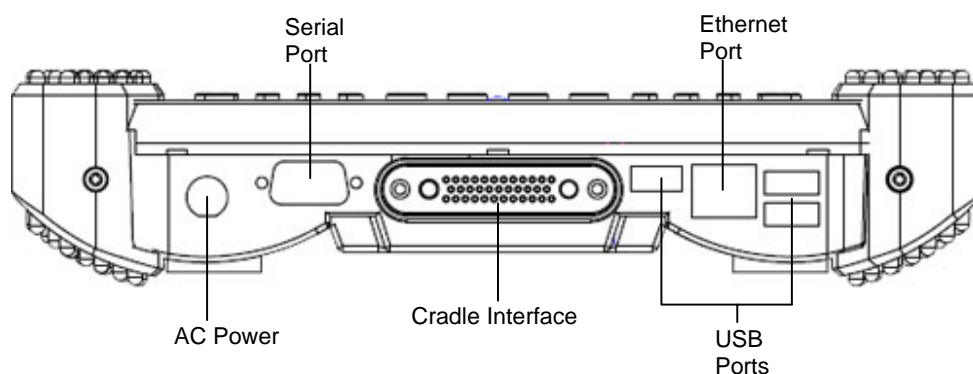
The front panel includes status indicator lights for the following:

- Power On / Off
- Barcode Scanner
- Battery



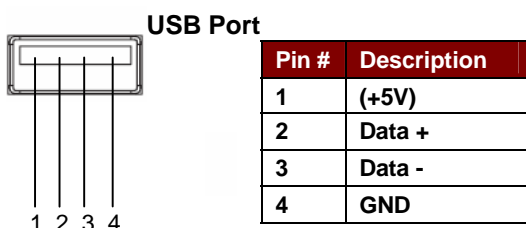
Indicator Light	Status	Description
Power	Solid Green	Powered On
Barcode Scanner	Solid Red	Scanning
	Flash Green	Good Scan
Battery Status		Refer to Battery Status LED section. Page 9

Bottom Panel

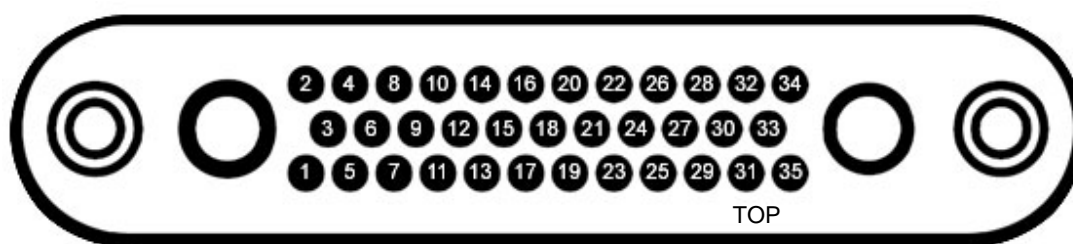


Bottom Panel Features

- Standard Ethernet Port (RJ-45)
- Standard Serial Port (RS-232 DB9) See Page. 21
- Standard USB, industrial grade connectors. Only DLI authorized peripherals should be attached to these USB ports. The USB port power is rated to 1A.
- Cradle Interface Connector. When seated in a DLI 8400 peripheral, the terminal is powered, the batteries charged, and communication occurs via this connector. All DLI 8400 peripherals are designed to work exclusively with this connector.



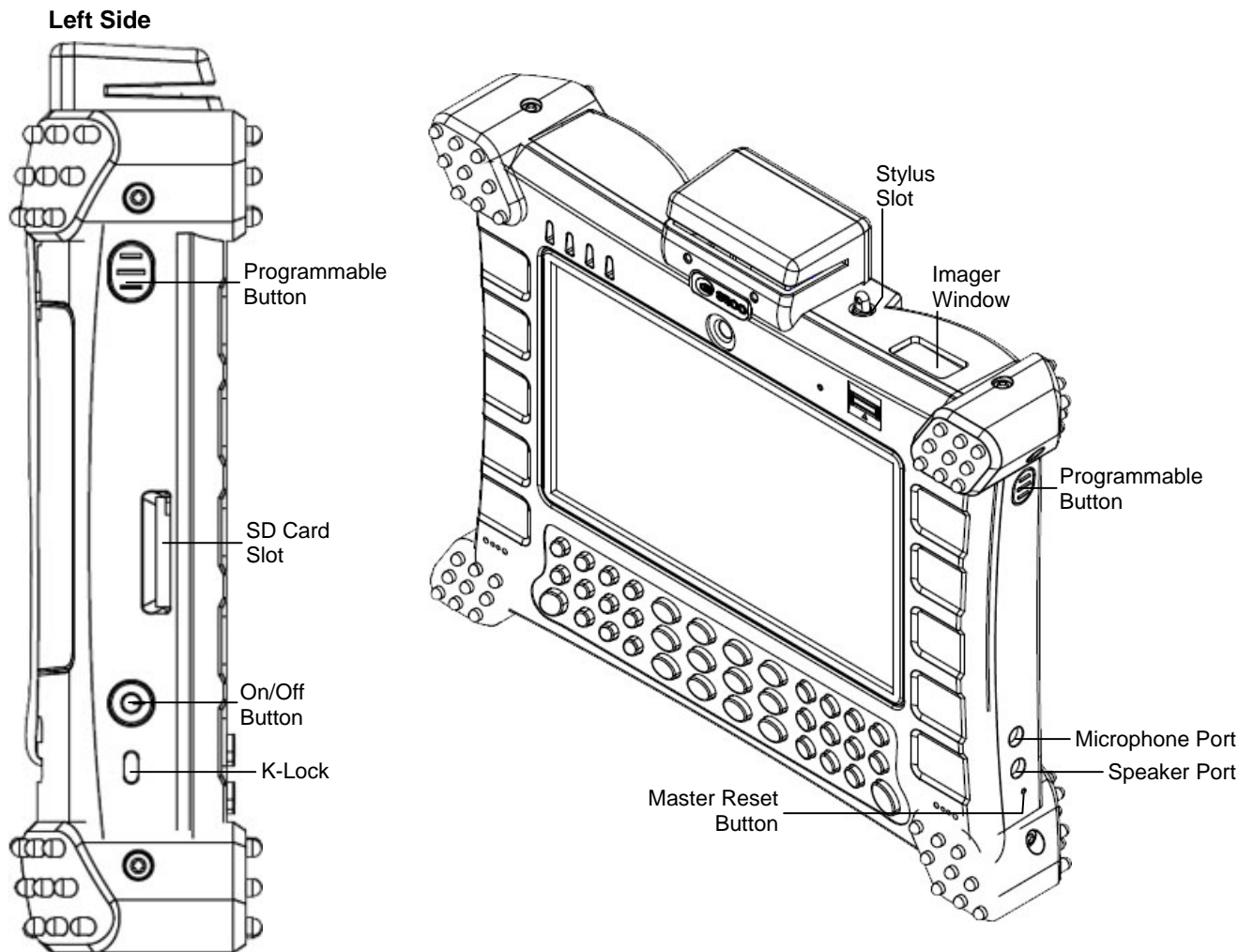
8400 Cradle Interface



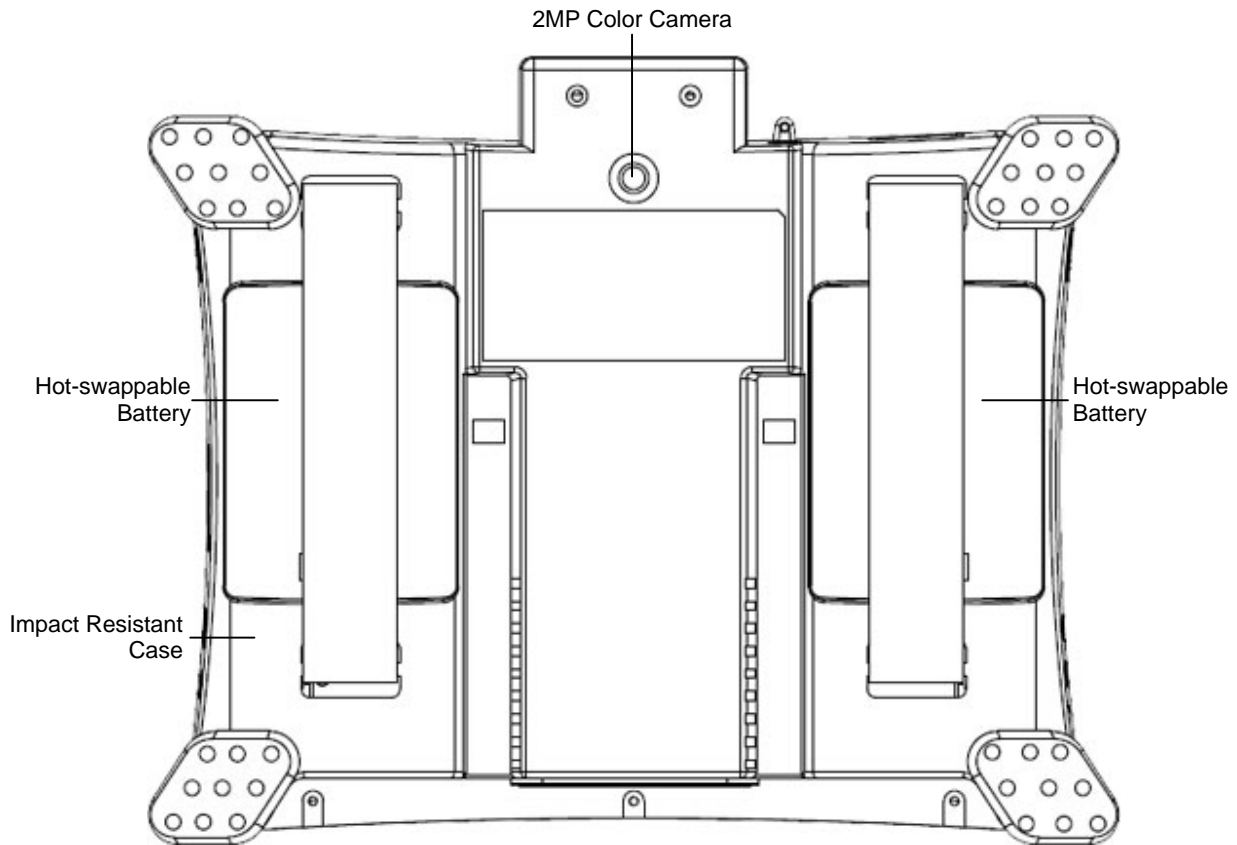
Pin#	Description
1	GND
2	GND
3	+20V DOCKING
4	LAN TRL3+
5	+20V DOCKING
6	LAN TRL3-
7	+20V DOCKING
8	LAN TRL2+
9	+3.3VS DOC
10	LAN TRL2-
11	+3.3VS DOC
12	GND
13	+5VS DOC
14	LAN TRL1+
15	+5VS DOC
16	LAN TRL1-
17	GND
18	LAN TRL0+
19	GND
20	LAN TRL0-

Pin#	Description
21	GND
22	GND
23	Docking GPIO1
24	H_USB5+
25	Docking GPIO2
26	H_USB5-
27	Docking GPIO3
28	GND
29	Docking GPIO4
30	GND
31	Docking GPIO5
32	CRADLE IN#
33	GND
34	GND
35	GND

Side Panel



Back Panel



Operating Temperatures

Operating -30°C to 50°C
Storage -40°C to 65°C

Setting Up the DLI 8400 Terminal

1. Unpack the carton and verify its contents. – Page 9
3. Charge the batteries for 3hrs.
4. Power on the terminal via the power button on the left side of the terminal.
5. Let the device load and end on the Desktop screen.

Unpack the Carton and Verify its Contents

Verify that the carton contains the following items:

- DLI 8400 Industrial Tablet Computer (terminal)
- DLI 8400-BAT Hot-swappable Batteries (2)



If you ordered peripherals and/or accessories, verify that they are also included with the order.

Be sure to keep the original packaging in case the DLI 8400 needs to be returned for service— See page 33.

Battery Status LED's

On Power Source (Charger)

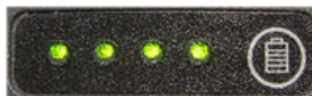
Battery Indicator Light	Status	Description
Power	Solid Green	Powered On
Battery	Solid Green	Capacity level = 100%
	Blinking Green	Capacity level > 70%
	Blinking Yellow	Capacity level > 20% - < 70%
	Blinking red	Capacity level < 20%

Off Power Source (No Charger)

Battery Indicator Light	Status	Description
Power	Solid Green	Powered On
Battery	Solid Green	Capacity level > 70%
	Solid Yellow	Capacity level < 70% - > 20%
	Solid Red	Capacity level < 20% - > 10%
	Blinking red	Capacity level < 10%

Push Button Battery Life Status

All DLI 8400 batteries have a Battery Life Status. Push the battery symbol and LEDs show the life status. Each LED is ~25%



For charging, use only Data Ltd. Inc., DLI 8400 peripherals and the power cables. Use of peripherals or cables not sold/manufactured by Data Ltd will void the warranty and may damage the terminal.

Charging the Battery in the DLI 8400

1. Connect the DLI 8400 to the power supply provided by Data Ltd.
2. The battery will begin charging immediately
3. Charge the batteries for three hours, then power on the terminal.



The battery will charge even if the terminal is in use as long as AC is applied to the terminal.

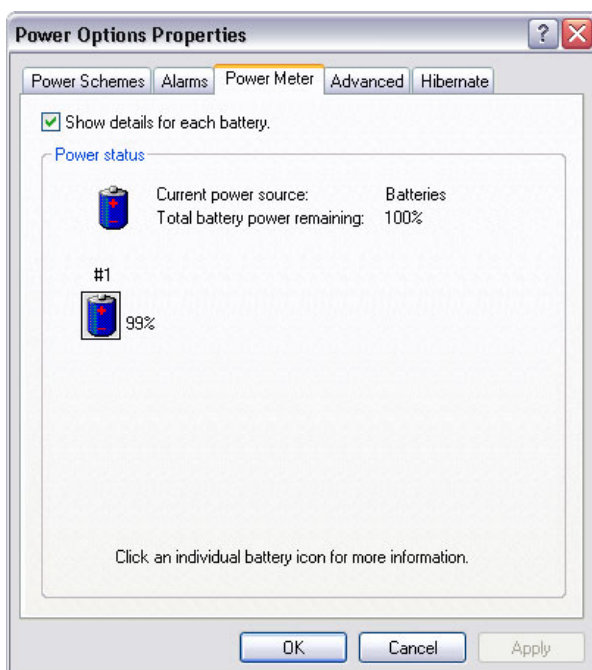
Checking the Battery Power

The battery power can be checked from two areas on the DLI 8400. The battery icon will provide a graphical representation of the remaining battery power.

1. Tap on the battery icon in the system task bar.

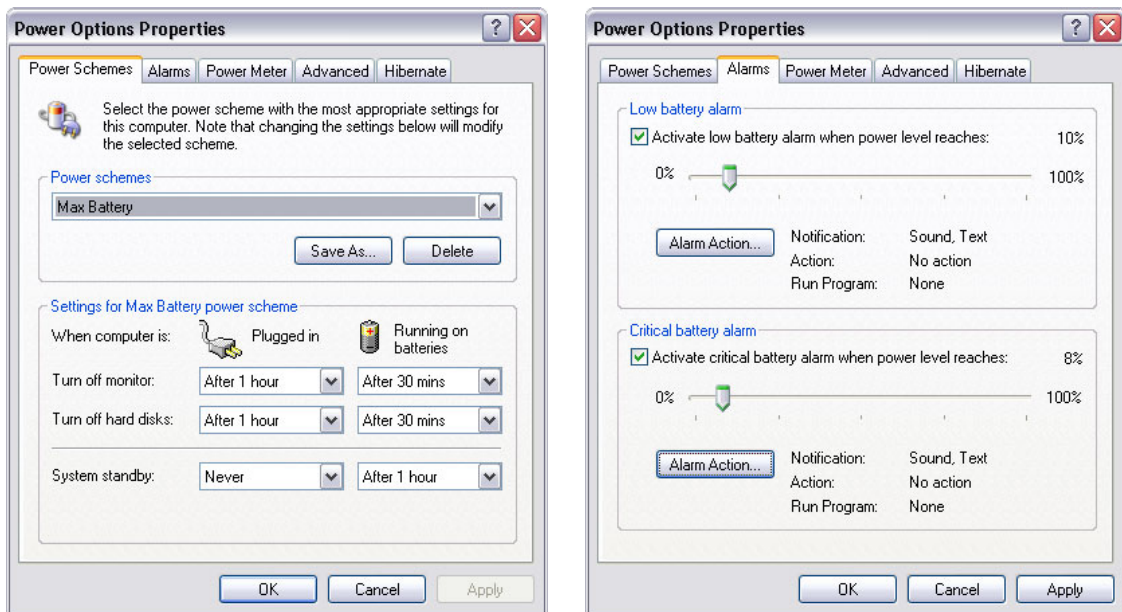


2. The power meter is also accessible via the **control panel**, tapping on **power options** and choosing the **power meter** tab



Power Management Utility

The DLI 8400 includes a comprehensive suite of power management functions. The power management is based upon the ACPI Standard (Advanced Configuration and Power Interface Specification) and is operated within the Embedded Controller (EC) at low level management. A graphical interface is supplied so that customer specific power schemes can be controlled. The Power Management Utility is accessible from the DLI Control Center application as well as from the **control panel** within Windows XP.



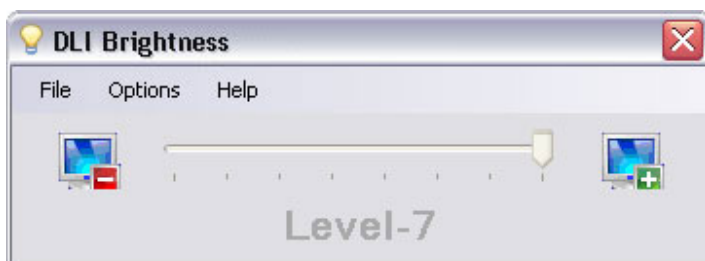
Adjusting the Backlight

Brightness levels of the liquid crystal display (LCD) are adjustable based on the lighting conditions. By default the level is set to 7. (0 being the lowest and 7 being the highest level) To adjust the level of backlight:

Start>Control Panel. Choose the DLI Brightness icon.



Tap “-” or “+” to adjust the brightness. The settings are **auto saved** after adjustment.
Tap *Options>Place in system tray* for quick access to this utility.



Integrated Keyboard

QWERTY Keyboard Layout

Below are keys & symbols above the keys that may require definition:



This is the Windows <Start> symbol



The symbol above the  Shift Key is the CAPS LOCK



The Function Key is pressed once to turn on the symbols above the **SMALLER** keys. The user does not have to press the key again or hold down when selecting the symbol above the keys. The Function key is turned off after the 2nd key stroke.




The Function Key is pressed once to turn on the symbols above the **LARGER** keys. The Function Key will remain on until the user presses the Function Key again to turn it off. This same rule will apply to the following keys:




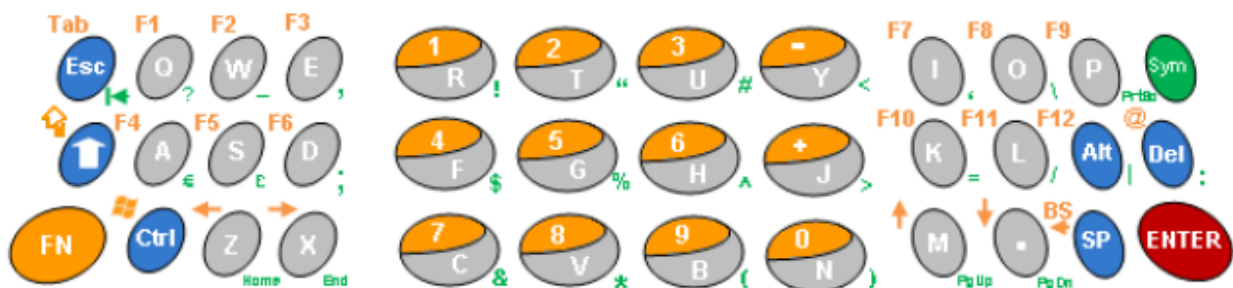
The Sym Key is pressed once to turn on the symbols below the keys. The user does not have to press the key again or hold down when selecting the symbol above the keys.



This is the back TAB symbol below the  Key



The Enter key will perform the same function whether the Function key is pressed or the  Symbol key is pressed.



Numeric Keyboard Layout

Below are keys & symbols above the keys that may require definition:



This is the Windows <Start> symbol



The symbol above the  Shift key is the CAPS LOCK



The Function Key is pressed once to turn on the symbols above the **SMALLER** keys. The user does not have to press the key again or hold down when selecting the symbol above the key. The Function key is turned off after the 2nd key stroke.




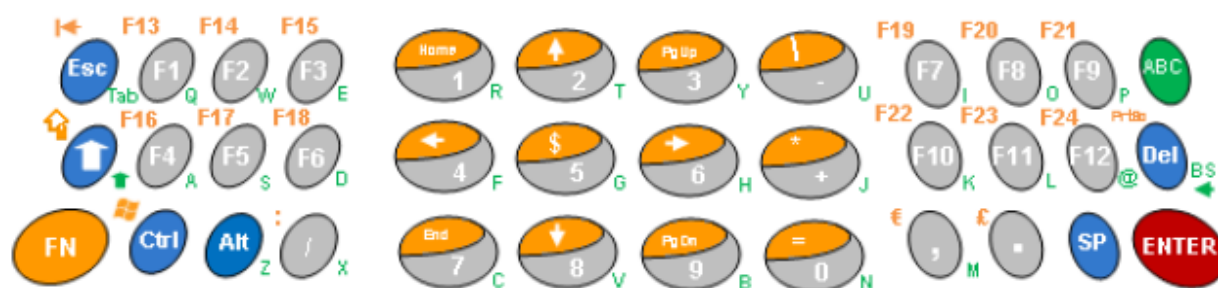
The Function Key is pressed once to turn on the symbols above the **LARGER** keys. The Function key will remain on until the user presses the Function Key again to turn it off.



The ABC Key is pressed once to turn on the Alpha letters below the keys. The user does not have to press the key again or hold down the key when selecting the letter below the key. The ABC Key will remain on until the user presses the ABC Key again to turn it off.



The Space key and the Enter key will perform the same function whether the Function key is pressed or the  ABC Key is pressed.



Using the Stylus

Calibrating and Using the Stylus

Calibration ensures the accuracy of the stylus and adjusts the input angle for each person who uses it. The terminal stores calibration data and settings on a per-user basis.

The stylus functions as a mouse; generally, a tap is the same as a mouse click.

- Tap:** Tap the touch screen once to open menu items and select options.
Drag: Hold the stylus on the screen and drag across the screen to select text and images. Drag in a list to select multiple items.
Right Mouse Click: Holding down the stylus for 3 seconds will activate the right mouse click.

Calibration:

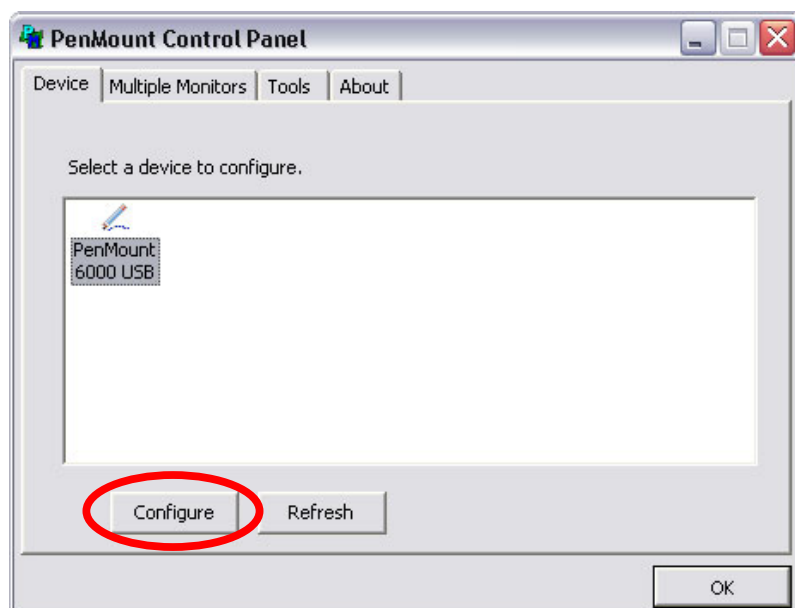
1. Right tap on the PenMount icon in the system stray.



2. Select the PenMount Control Panel.



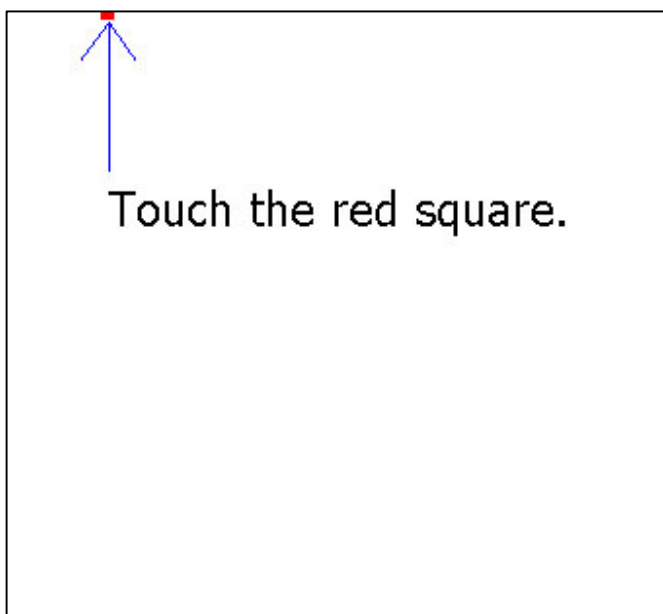
3. Chose the PenMount 6000 USB icon and tap the Configure button.



4. Tapping on the Calibration button will prompt the user to tap multiple points on the screen.



5. Hold the stylus naturally as if you were writing with a ball point pen, holding the stylus down on each red point as they appear. During calibration, position the terminal as close to the way you would use it.



- After completion the screen returns to the Standard Calibration window. Selecting OK will save the settings. Tapping Standard Calibration will start the process again.



- The calibration is now complete and the PenMount Control Panel window is displayed. Select OK to close the application down. The PM icon will still be present in the system tray for quick configuration should your touch screen need recalibration.



Do not write on the terminal display with ink pens or other sharp objects that may damage the display.

Using the Programmable Keys

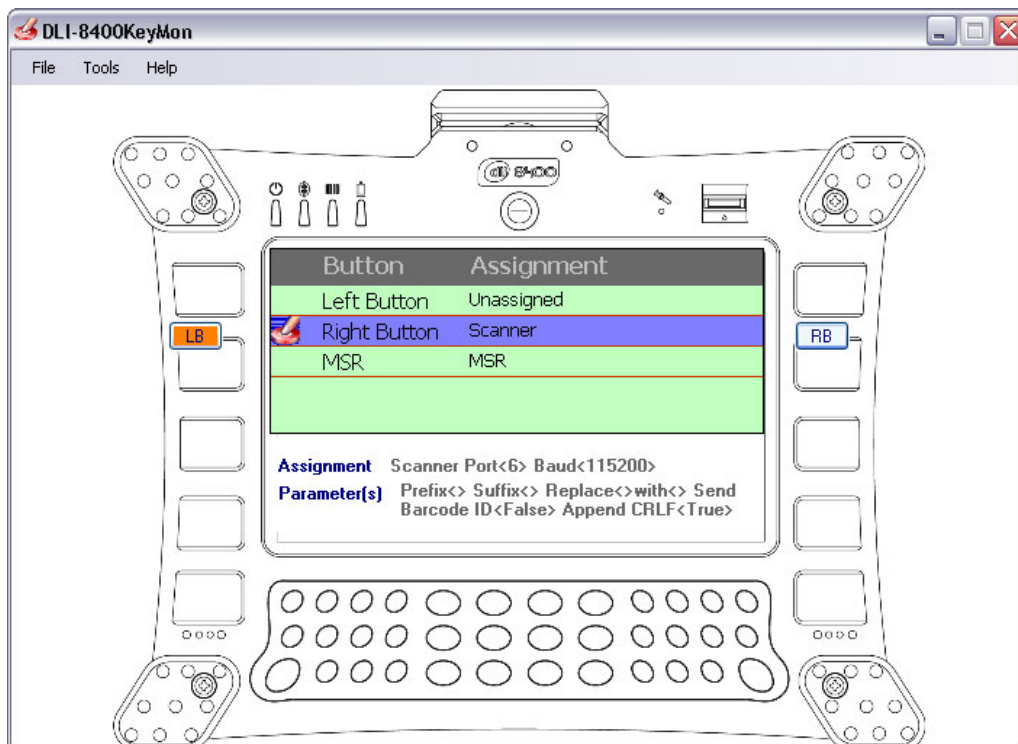
The DLI 8400 has 2 integrated function keys. Each of the keys is user configurable via the DLI KeyMon Utility. The keys can be assigned to perform executable applications or to Data Ltd. predefined functions. The predefined functions are as follows: Right button assigned to activate the imager and Left button assigned to DLI Camera.

The DLI KeyMon utility can be launched from the system tray or from the **Start>Programs>DLI>DLI KeyMon**. The procedure below will assist you in defining the keys.

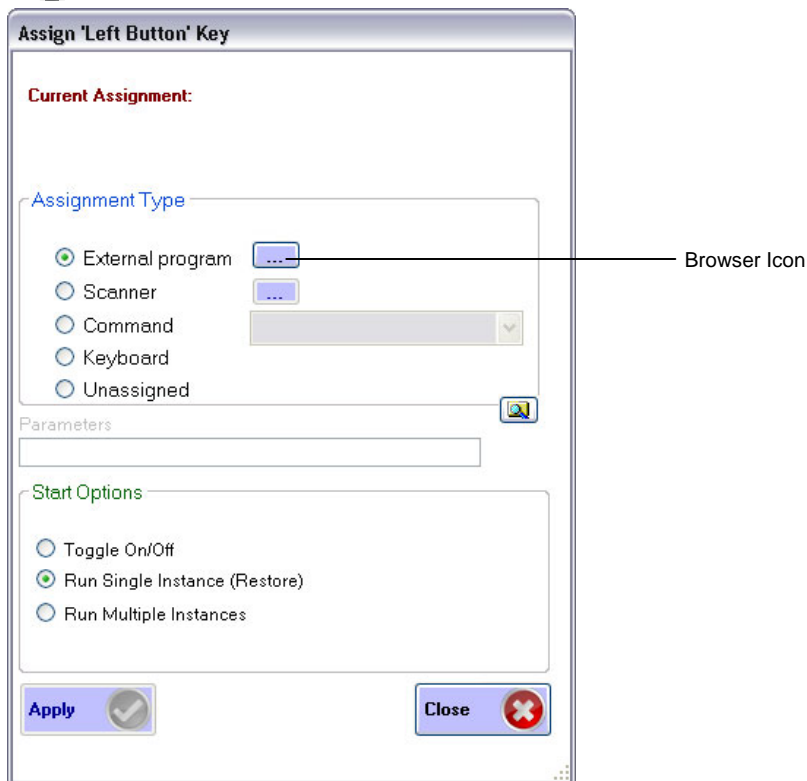
- Tap on the DLI KeyMon icon in the system tray



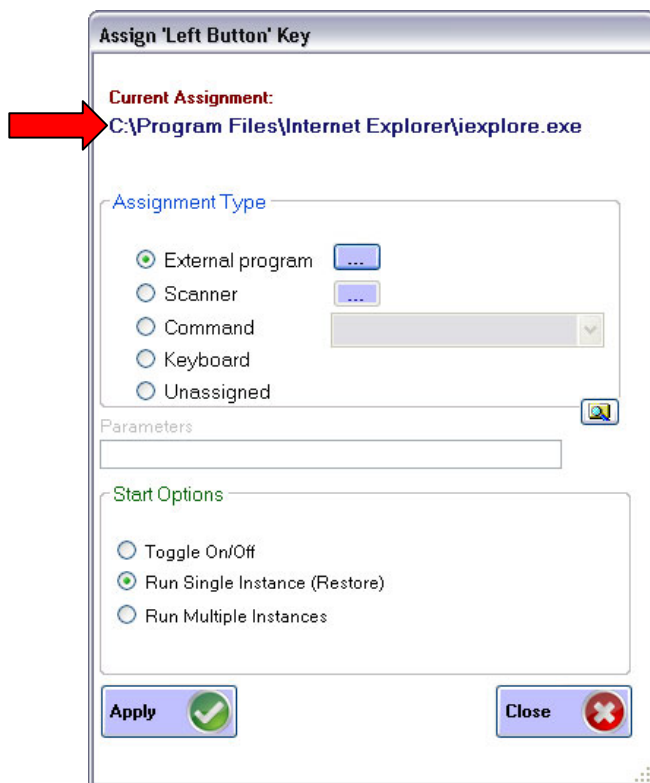
2. The DLI KeyMon screen is presented. Choose a key that requires a definition by tapping on the orange keys or by highlighting the key in the button assignment area and then double tapping.



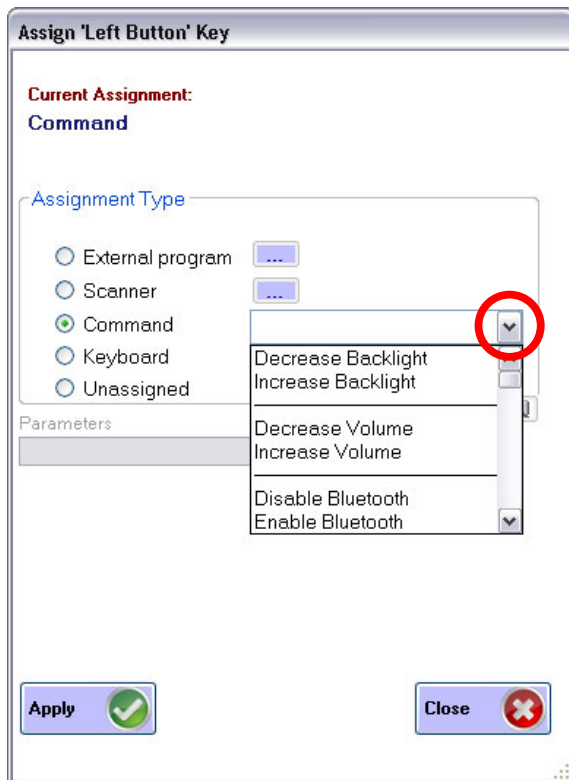
3. There are 5 options for key assignment. Choose the assignment that is required for the key.
4. To assign an application choose **External program** and tap on the browser icon. (See page. 18)



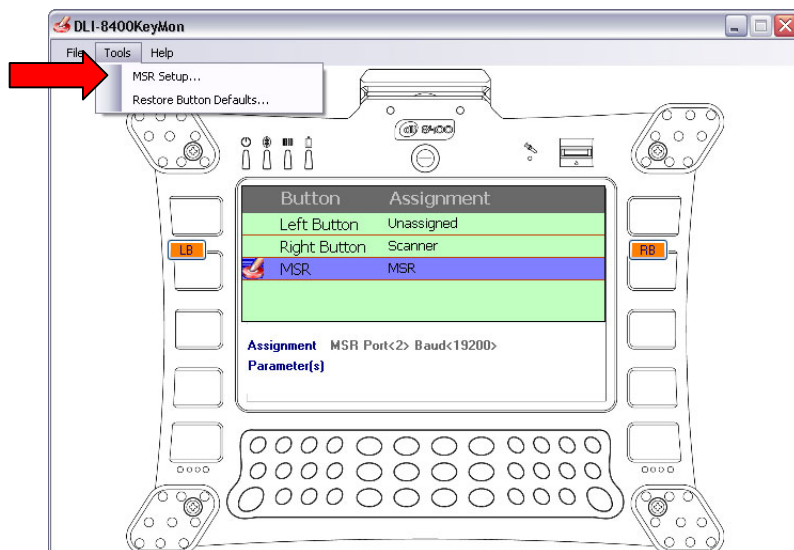
- The user is returned to the assign menu once the selection has been chosen from the browser icon. Selecting the apply button saves the change to the key. The path to the application will appear in blue below the Current Assignment:



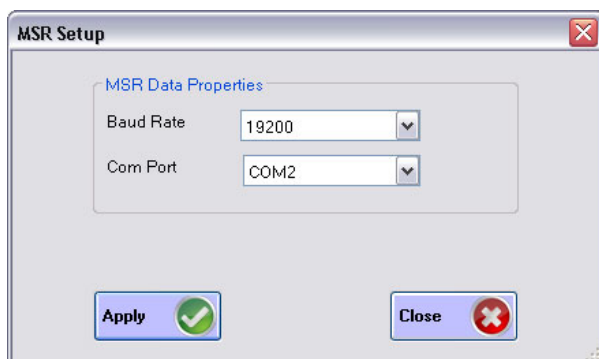
6. To select a predefined action or keystroke choose **Command** and tap the down arrow to display a drop menu.



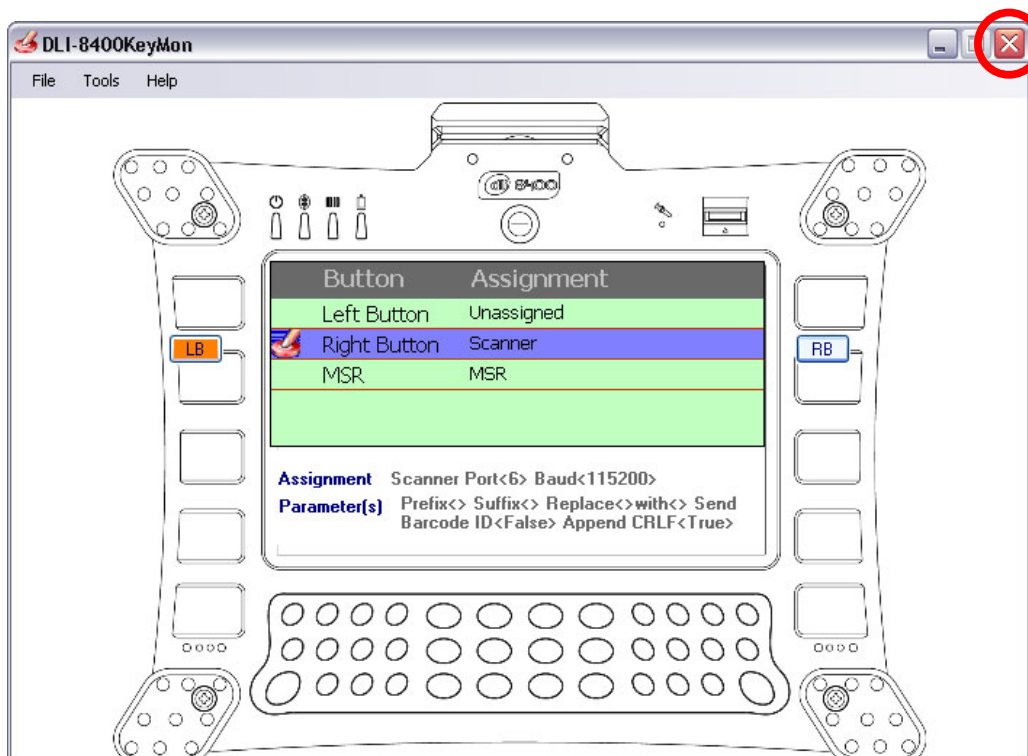
7. The drop menu has a list of various actions and keystrokes to choose from. Once you have selected the command, tap the apply button to save.
8. The DLI KeyMon program can be used to send data received by the Mag Stripe Reader (MSR) to the keyboard buffer. To setup your MSR to forward data, Select Tools then MSR Setup or by highlighting the MSR in the button assignment area and then double tapping.



9. The default MSR Data Properties are 19200 Baud Rate and COM2 for the Com Port.



10. To Close the DLI KeyMon tap on the "X" on the top right of the Main Window.



SIM Card Insertion

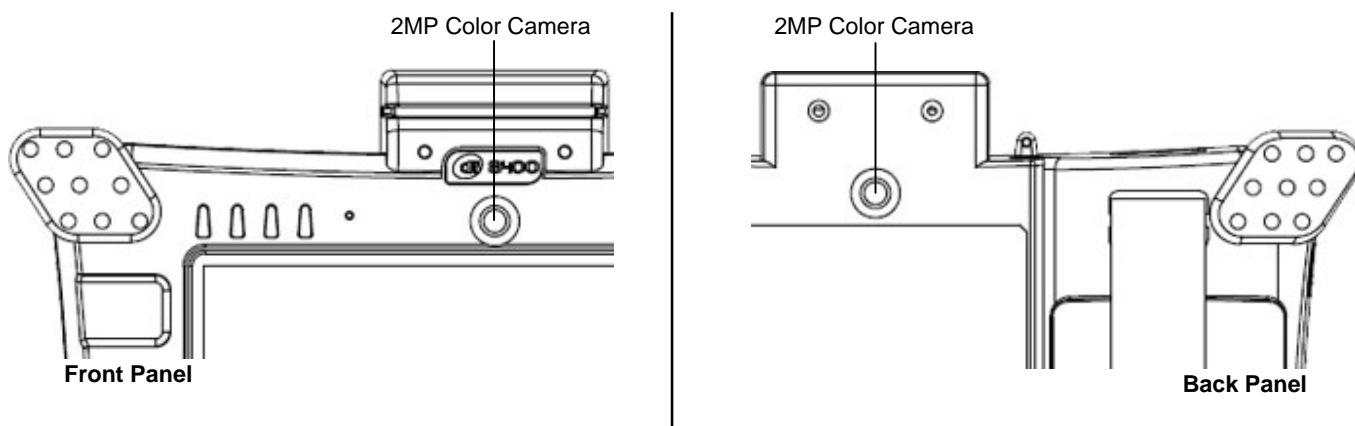
The SIM Card Slot is located in the battery bed of Battery Slot 1. The SIM Card Slot is intended for use of the MC8790 (GPRS Wireless Radio) **ONLY**. If you are unaware of what type of WWAN Radio you have please contact DLI Technical Support; (800) 526-1299 x774 or support@dataitd.com.



The unit must be power down prior to inserting the SIM card. Failure to do so may result in harm to the unit and the SIM.

Using the Camera Option

The two 2MP Color Cameras are located on the front and back panels of the terminal. The camera can be used for picture capture as well as streaming video.

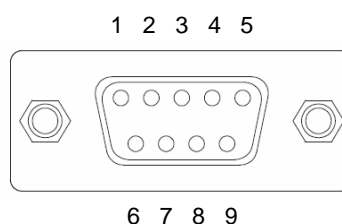
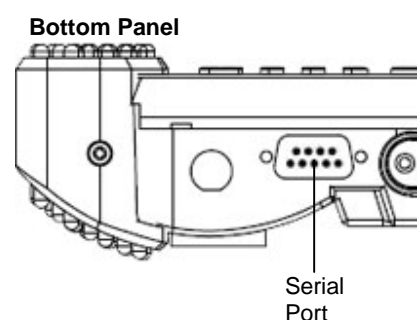


Using the RS-232 DB9M

The integrated RS-232 Port can be configured to work with many peripherals including (Barcode Scanners, Printers, OBDII (Vehicle Interface), and Remote Monitoring apparatuses). To configure the RS-232 port so that the data is sent to the keyboard buffer the following procedure is required. This procedure is typically used when using an external barcode scanner on the device.



Make sure that the external device is not attached to the port before configuring.



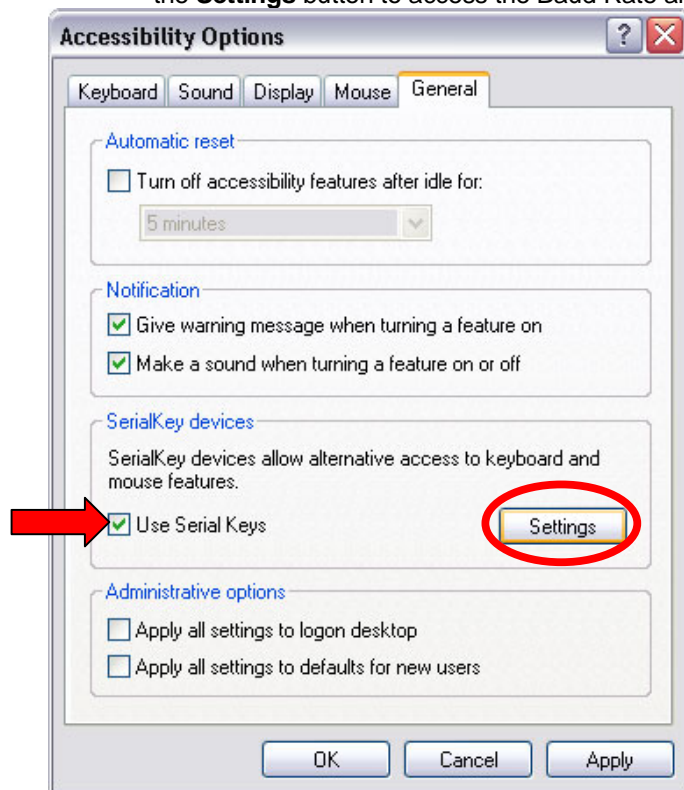
Pin	Description
1	DCD
2	TXD
3	RXD
4	DSR
5	GND
6	DTR
7	CTS
8	RTS
9	+5V

1. Open the Control Panel, tap **Start>Control Panel**.

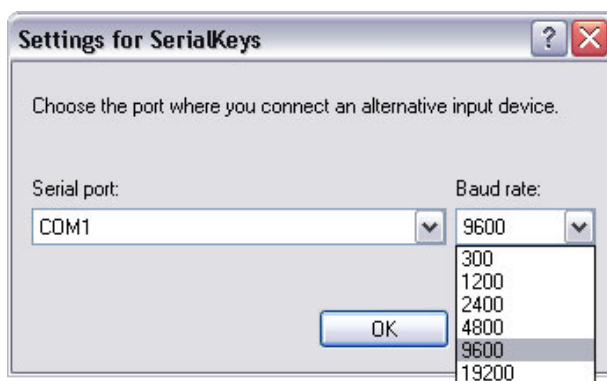
2. Tap on Accessibility Options Icon.



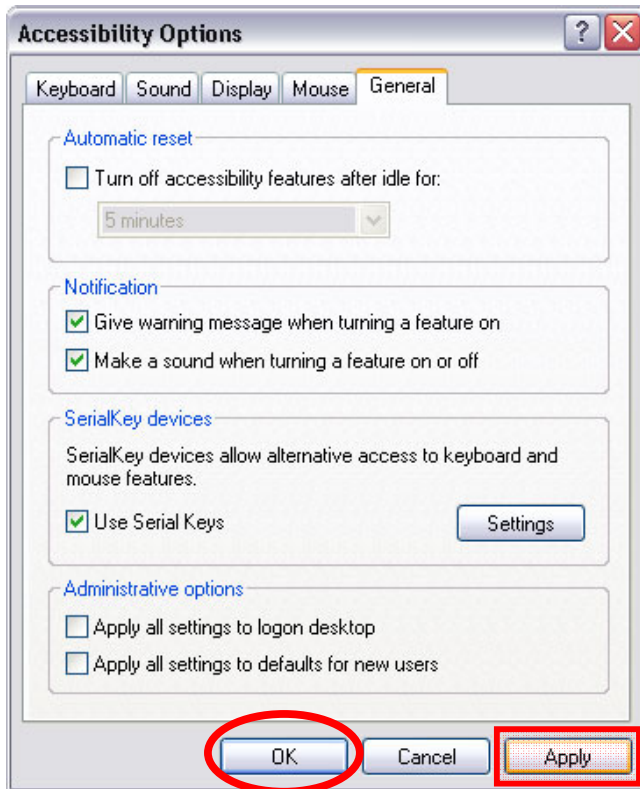
3. Chose the General Tab to configure the RS-232 port and check **Use Serial Keys**. Tap the **Settings** button to access the Baud Rate and Com port that will be configured.



4. Set Serial Port to Com1 and Baud Rate to 9600, tap OK.



5. Save the settings by choosing the Apply button, then tap OK. Now you can plug the device into the RS-232 port.



Using the Barcode Scanner

The DLI 8400 is available with an optional integrated barcode imager for scanning barcodes.

- Honeywell® 5300 Class 2 Standard Range Imager with Cross Hairs (Integrated)

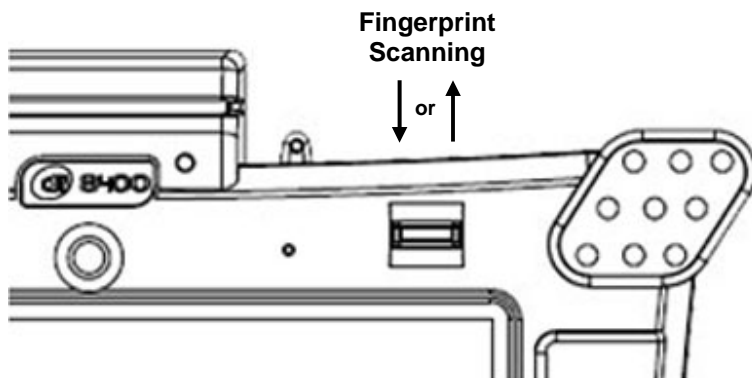
The Imager can be configured by using the DLI 8400 KeyMon (See Page 16).

To Decode a Barcode

1. Point the top of the DLI 8400 terminal directly at the barcode. The Imager faces straight out of the top panel. The Cross Hairs should be oriented in line with the bar code to achieve optimal decoding.
(Distance from barcode should be 2 to 15 inches)
2. Project the Imager and Cross Hairs by pressing and holding the programmed scan button which is set in KeyMon(default is Left Side Button).
3. Center the cross hairs over the barcode.
4. When the barcode is successfully decoded, the decode LED lights green and the terminal beeps. (Bad read, LED lights red)
5. The bar code information is entered into the application in use.

Biometric Reader

The fingerprint reader is located top right on the Front Panel and enables you to scan your fingerprint and associate it with passwords. This feature offers a quick and convenient way to log on to your DLI 8400 terminal, provides global password management, and protects your terminal data from unauthorized access.



Using GPS

The optional GPS module with active antenna provides the SiRFstar III chip set and TTFF (Time to First Fix) technology which speeds the time to lock to a satellite. The Geohelix active antenna provides 25db gain. Along with each of these features Data Ltd's patent pending RF antenna switching technology provides you with the functionality of switching between external and internal antennas without software requirements.

Data Ltd has included in the DLI 8400 a GPS software tool to verify that all functions of the GPS module are working properly.

1. To launch the application tap on the **VisualGPS** icon on the DLI 8400 desktop.

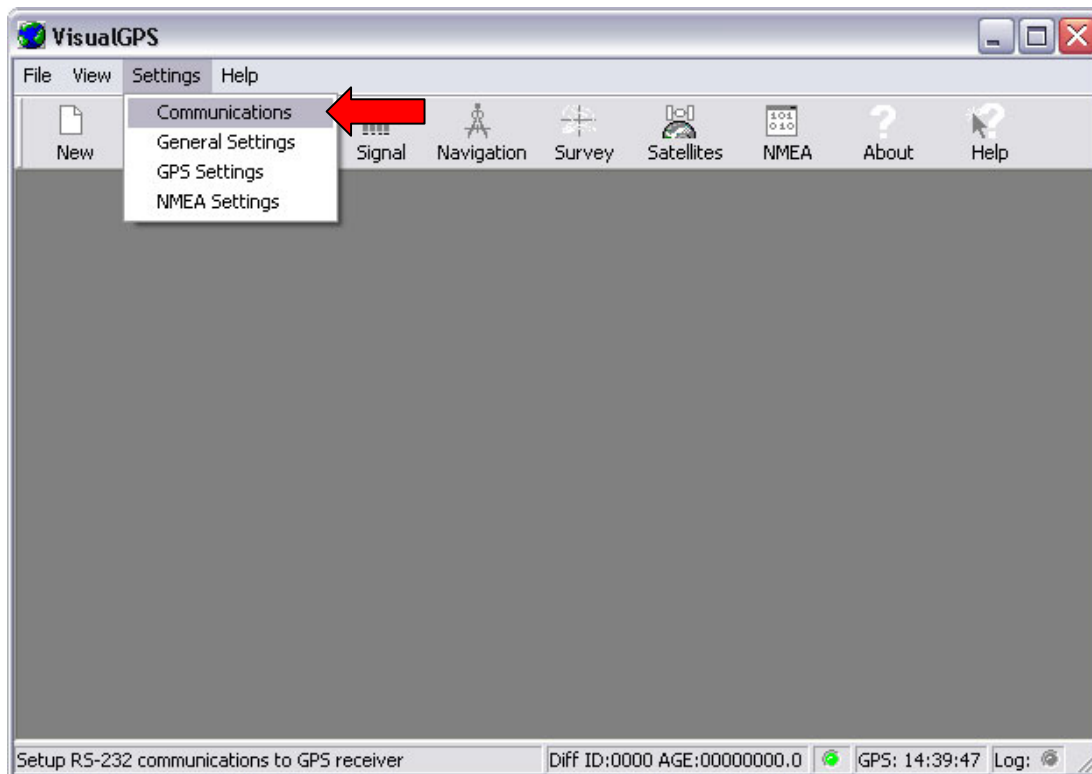


VisualGPS

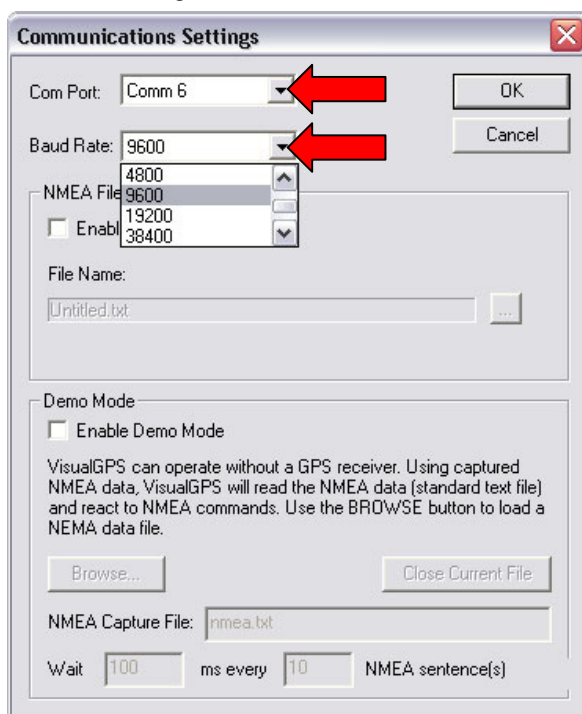


Visual GPS can also be found under Start>All Programs>VisualGPS.

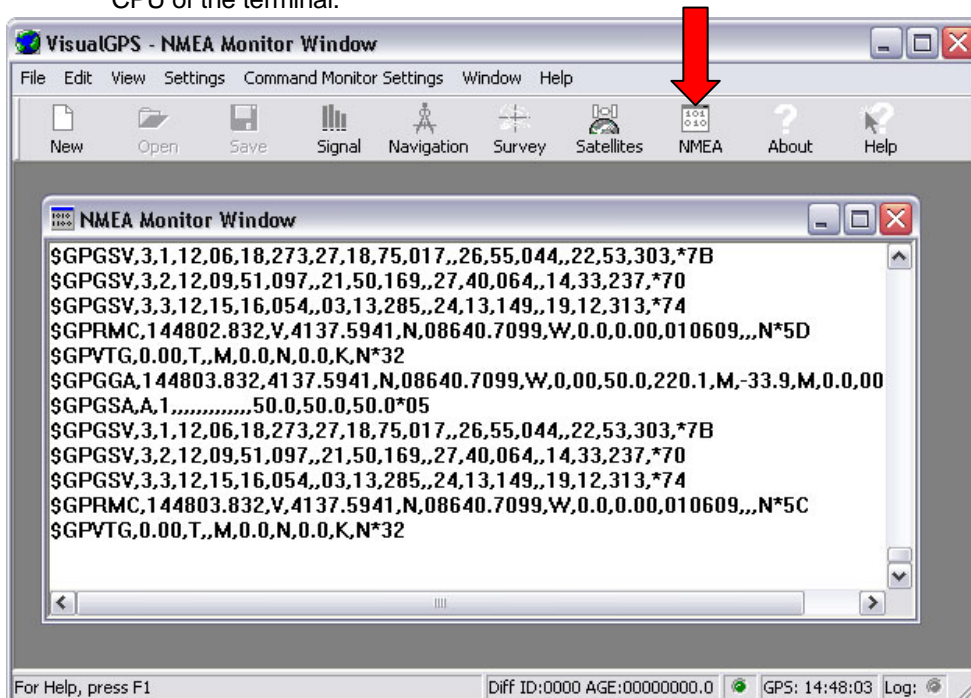
2. Choose the **Settings** option from the main menu and select **Communications** from the drop down menu.



3. The configuration screen is displayed. Set the Com Port to Comm 1. This is the com port that your GPS module is using. Set the Baud Rate to 9600. Tap the **OK** button to save the settings.



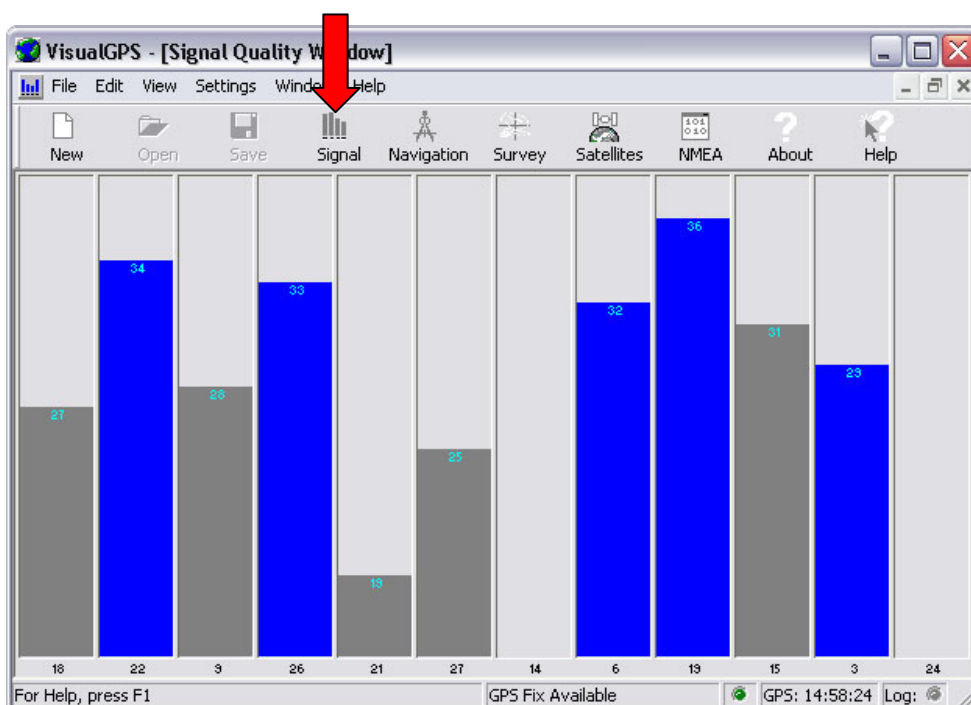
- From the Toolbar choose the **NMEA** icon. The raw NMEA code will continue to load until the NMEA window is closed. This test assures that the GPS module is talking to the Main CPU of the terminal.



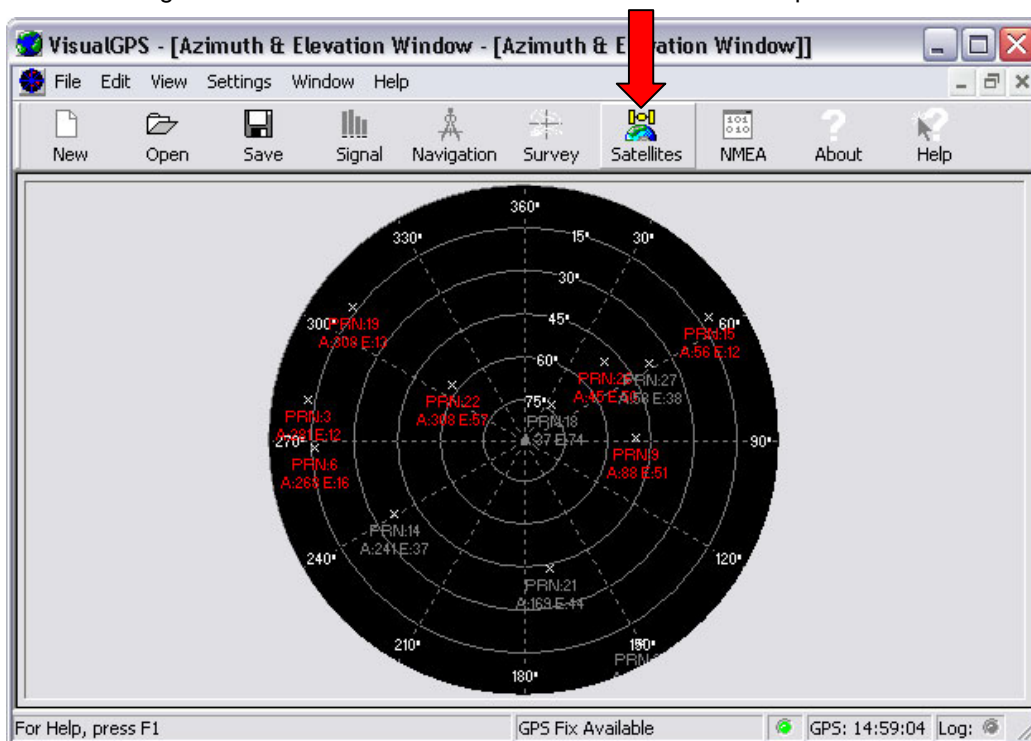
- To verify the Signal Quality you must be outside a building as GPS antennas do not work inside buildings. From the main menu choose the **Signal** icon. The screen will display the db gain to each satellite that the GPS module is communicating with.



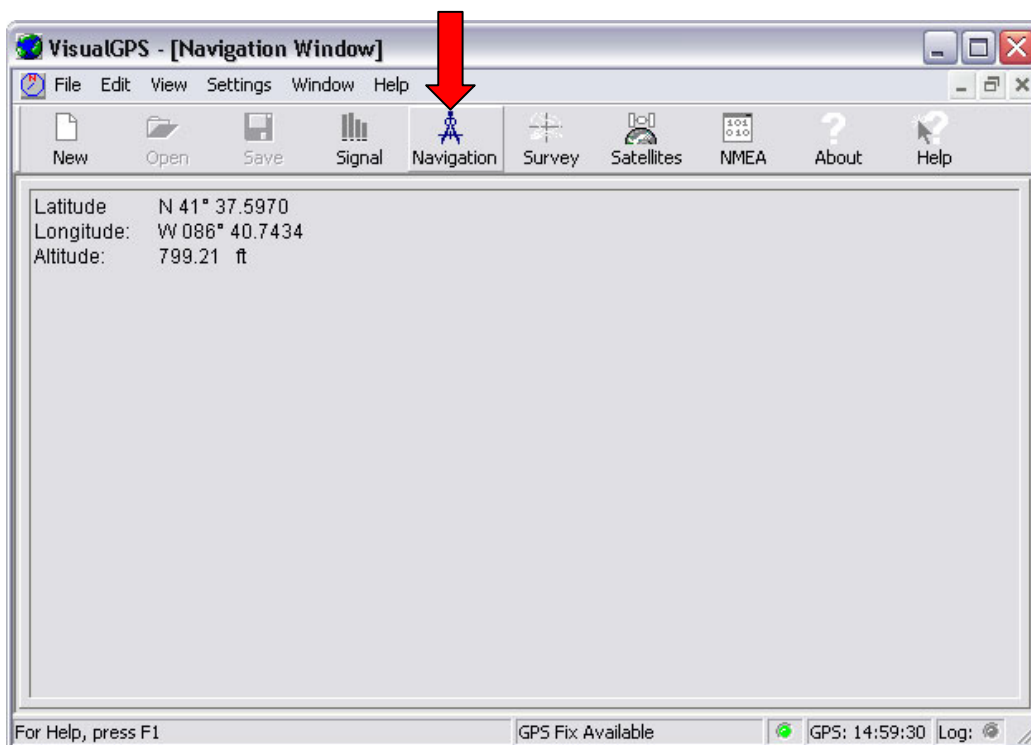
The blue bar indicates a lock to a satellite and the gray bar indicates that the module is communicating with the satellite but does not have a complete fix on your location.



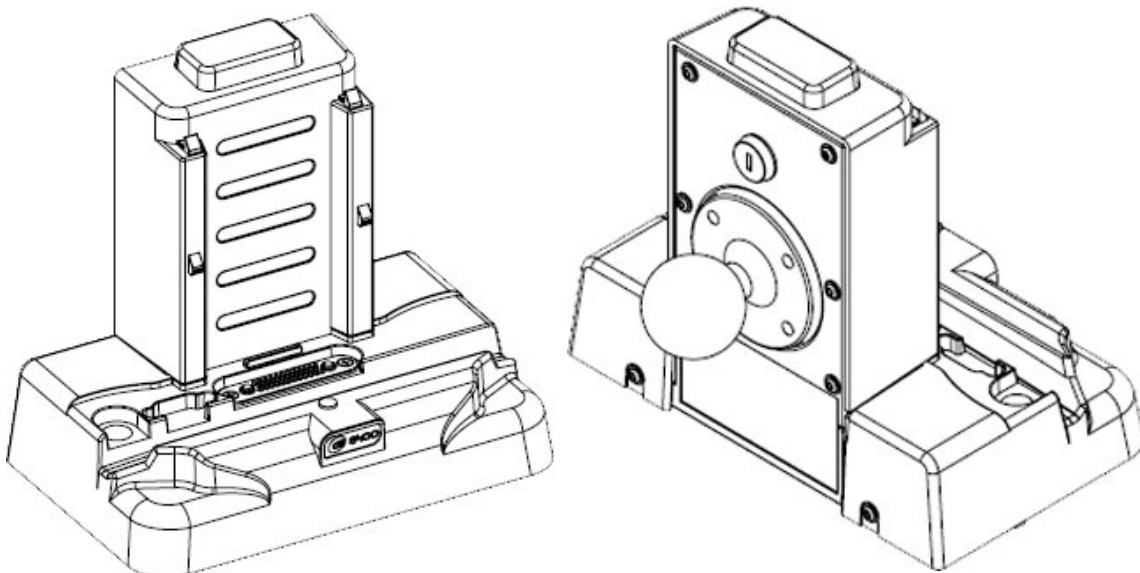
6. To verify the satellites that the GPS module are fixed to, Tap on the **Satellite** icon. The screen displays the satellites in red that the module is fixed with. The gray satellites are being communicated with but are not locked on the modules position.



7. To verify the longitude and latitude reading from the DLI 8400 location choose the **Navigation** icon. The module must be locked onto 3 satellites before the reading is accurate.



DLI 8400 Cradle



Overview

DLI 8400 Cradle is a Desktop and Vehicle Cradle all in one. It features a quick release locking mechanism, flexible mounting, and power options for all types of applications and devices.

When the DLI 8400 is seated in the Cradle, both Hot-swappable batteries are charged in 4 hours. The configurable I/O Ports support USB, RS232, Ethernet; all with DLI Locking connector providing security and reliability. The patent pending RF design provides operating with ease using internal and external antennas.

Charging

The Cradle provides power to the intelligent battery charging system in the DLI 8400 that senses when a full charge has been achieved and switches to a trickle charge to maintain a full charge.

Communications

The Cradle transmits via USB 2.0 and serial devices at speeds of up to 115K baud. The Ethernet transmits at 10/100 mbps.

RF Communication

The DLI 8400 Terminal with its integrated RF switching circuit provides a pass through for the RF external connectors. This technology optimizes the ability for quick disconnect from the cradle and switches the RF signal from the cradle to the internal antennas on the DLI 8400 Terminal.

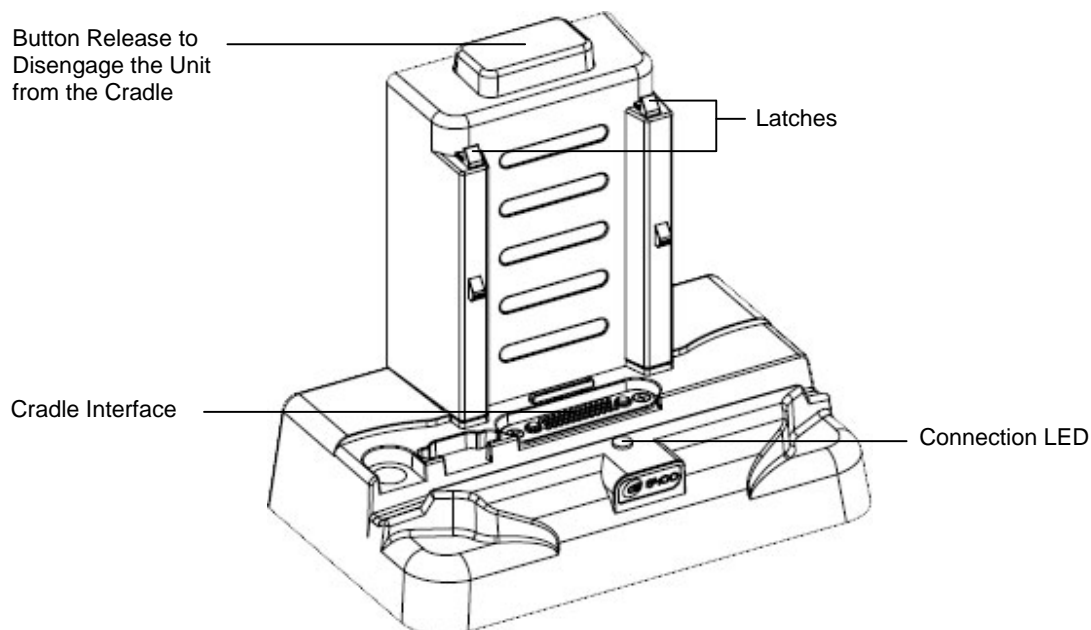


Use only DLI 8400 peripherals, power cables, and power adapters. Use of peripherals, cables, or power adapters not sold/manufactured by Data Ltd. Inc. will void the warranty and may damage the terminal.



Use only Li-Ion battery packs provided by Data Ltd. Inc. The use of any battery pack not sold/manufactured by Data Ltd. Inc. will void the warranty and may damage the terminal.

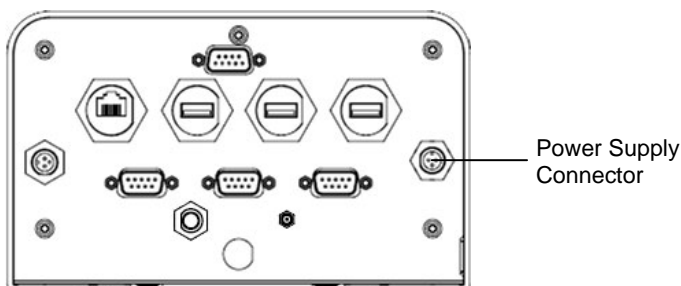
Front Panel



Solid green Connection LED indicates connection established with Terminal.

Bottom Panel

The I/O and the power supply connector are located on the bottom of the unit.



Power Supply Connector

The connector is to be used with the DLI series of power supplies. Please see below for a reference of those recommended power sources.

The Cradle can be powered by an external DC power source of 18VDC~22VDC. An optional internal 6VDC~60VDC regulated power supply is available.



Verify that the power source is always within the specification range and observe correct input voltage polarity. An improper input voltage range above 22VDC(standard) or above 60VDC (optional) or reverse polarity could damage the power conversion circuitry.

Recommended Power Supplies:

6705190041000P
6705200041000P

AC Adapter W/Line Cord
Cigarette Lighter Adapter for charging the unit in a vehicle

USB Communication Port

The Cradle was designed with locking USB connectors. The USB port power is rated to 1 AMP. Locking USB cables are available for the Symbol LS3408 & DLI 72K QWERTY Industrial Keyboard (5500001010000P). Standard USB cables can also be connected to the cradle.

RS232 Communication Port

Use a standard serial cable to connect the unit to a host device via RS232

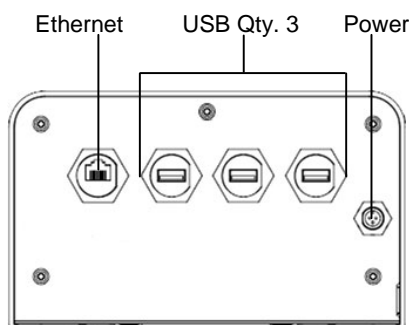
Ethernet Communication Port

The locking Ethernet connection supports 10/100mbps communication via a wired LAN. Standard Ethernet cables can be use to attach the cradle to a host system.

Quick Release RF Connectors

The Vehicle Cradle patent pending quick release RF connectors provide a switching pass through to the RF connectors on the bottom of the cradle. The 2 options available are FME for cellular support and SMA for GPS support. Should you require a custom connection please consult your DLI product vendor or DLI sales representative.

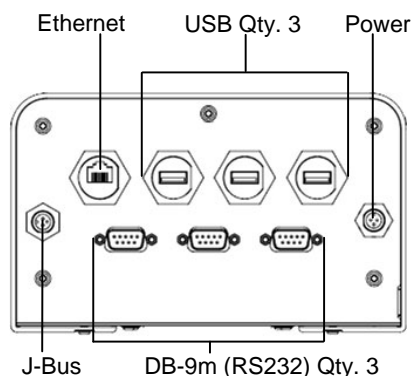
Connector Locations



8400-VMC-1

Ask your Salesperson for a Product Catalog to get more information for this VMC option.

8400-VMC-2



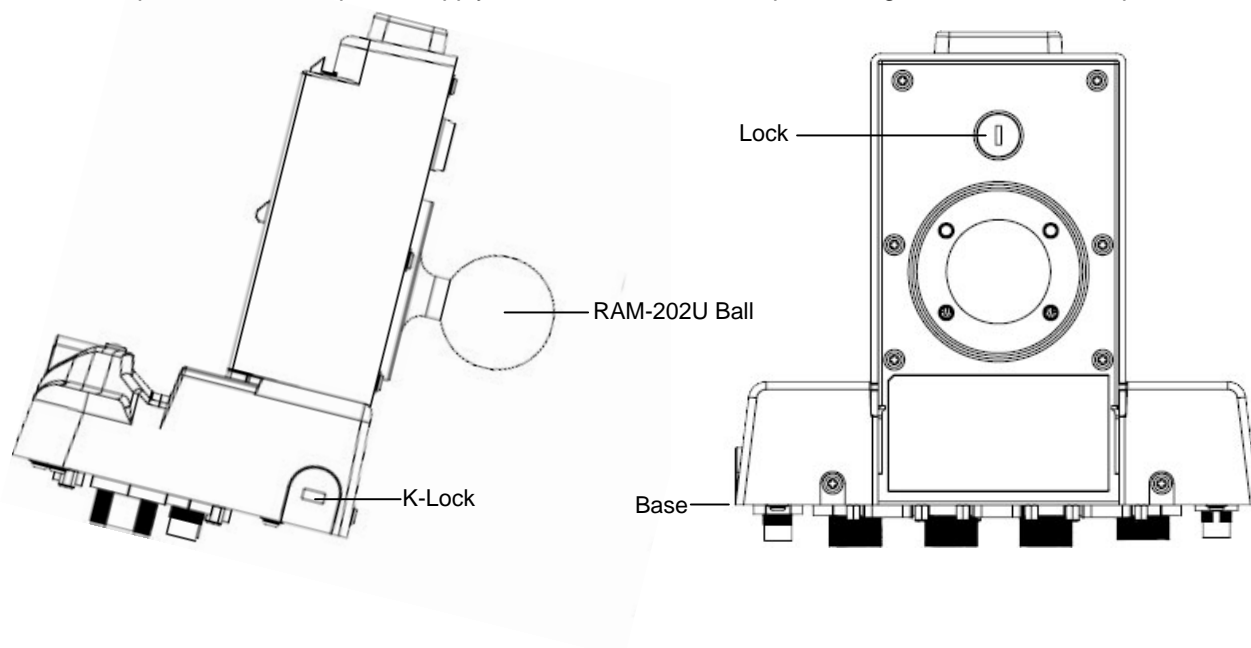
8400-VMC-3

Ask your Salesperson for a Product Catalog to get more information for this VMC option.

8400-VMC-4

Installing the Vehicle Cradle

Mounted to the back panel of the Vehicle Cradle is a RAM-202U ball. Optional RAM mounting arms are available for a variety of secure options. When selecting a location to mount the cradle, keep in mind that the power supply, RF connectors, and I/O point straight out of the bottom panel.



Please ensure that you give a minimum of 2.75 inches of clearance from the base of the cradle. Proper cable routing and clearance will help with less strain on cables and connectors, while also allowing for better access to the ports.

Shipping your DLI Device

Proper way to pack your DLI device



DO NOT ship any DLI Device without a proper UPS or FedEx container. The DLI Container is not meant for stand-alone shipping.

- Place device in foam cover as shown.



- Place the wrapped DLI device in the correct position in the spacer inside the DLI Container.



- Using a proper UPS or FedEx container, line the bottom with Bubble Wrap, Air Pillows, Packing Foam, etc.



The dimensions of the box shown are 27x17x10.

- Fill the rest of the Shipping Container with packing material.



- Place the closed DLI container inside the lined Shipping Container.



- Seal the Shipping Container and ship to:
Data LTD
703 Data Ltd Parkway
La Porte, IN 46350



Technical Assistance

If you need assistance installing or troubleshooting, please call your DLI vendor or the Data Ltd. Inc. Technical Support Office.

North America/Canada:

Telephone: (800) 526-1299, Ext 774 (8 AM to 4 PM CST)

Fax number: (219) 362-1937

E-mail: support@data ltd.com

Website: <http://www.data ltd.com/html/support-ticket.html>

Product Service and Repair

Data Ltd. Inc. provides service for all its products through service centers throughout North America. To obtain warranty or non-warranty service, return the unit to Data Ltd. Inc. (postage paid) with a copy of the dated purchase record attached. Contact the appropriate location below to obtain a Return Material Authorization number (RMA #) before returning the product.

Telephone: (800) 526-1299 ext 723

Fax number: (219) 362-1937

E-mail: RMA@data ltd.com

Website: <http://www.data ltd.com/html/request-rma.html>

Limited Warranty

Data Ltd. Inc. warrants its products to be free from defects in materials and workmanship and to conform to Data Ltd. Inc. published specifications applicable to the products purchased at the time of shipment. This warranty does not cover any product which is (i) improperly installed or used; (ii) damaged by accident or negligence, including failure to follow the proper maintenance, service, and cleaning schedule; or (iii) damaged as a result of (A) modification or alteration by the purchaser or other party, (B) excessive voltage or current supplied to or drawn from the interface connections, (C) static electricity or electro-static discharge, (D) operation under conditions beyond the specified operating parameters, or (E) repair or service of the product by anyone other than Data Ltd. Inc. or its authorized representatives.

This warranty shall extend from the time of shipment for the duration published by Data Ltd. Inc. for the product at the time of purchase ("Warranty Period"). Any defective product must be returned (at purchaser's expense) during the Warranty Period to Data Ltd. Inc.'s factory or authorized service center for inspection. No product will be accepted by Data Ltd. Inc. without a Return Materials Authorization, which may be obtained by contacting Data Ltd. Inc. In the event that the product is returned to Data Ltd. Inc. or its authorized service center within the Warranty Period and Data Ltd. Inc. determines to its satisfaction that the product is defective due to defects in materials or workmanship, Data Ltd. Inc., at its sole option, will either repair or replace the product without charge, except for return shipping to Data Ltd. Inc..

EXCEPT AS MAY BE OTHERWISE PROVIDED BY APPLICABLE LAW, THE FOREGOING WARRANTY IS IN LIEU OF ALL OTHER COVENANTS OR WARRANTIES, EITHER EXPRESSED OR IMPLIED, ORAL OR WRITTEN, INCLUDING, WITHOUT LIMITATION, ANY IMPLIED WARRANTIES OF MERCHANTABILITY OR FITNESS FOR A PARTICULAR PURPOSE.



DATA LTD. INC.'S RESPONSIBILITY AND PURCHASER'S EXCLUSIVE REMEDY UNDER THIS WARRANTY IS LIMITED TO THE REPAIR OR REPLACEMENT OF THE DEFECTIVE PRODUCT. IN NO EVENT SHALL DATA LTD. INC. BE LIABLE FOR INDIRECT, INCIDENTAL, OR CONSEQUENTIAL DAMAGES, AND, IN NO EVENT, SHALL ANY LIABILITY OF DATA LTD. INC.'S ARISING IN CONNECTION WITH ANY PRODUCT SOLD HEREUNDER (WHETHER SUCH LIABILITY ARISES FROM A CLAIM BASED ON CONTRACT, WARRANTY, TORT, OR OTHERWISE) EXCEED THE ACTUAL AMOUNT PAID TO DATA LTD. INC. FOR THE PRODUCT. THESE LIMITATIONS ON LIABILITY SHALL REMAIN IN FULL FORCE AND EFFECT EVEN WHEN DATA LTD. INC. MAY HAVE BEEN ADVISED OF THE POSSIBILITY OF SUCH INJURIES, LOSSES, OR DAMAGES. SOME STATES, PROVINCES, OR COUNTRIES DO NOT ALLOW THE EXCLUSION OR LIMITATIONS OF INCIDENTAL OR CONSEQUENTIAL DAMAGES, SO THE ABOVE LIMITATION OR EXCLUSION MAY NOT APPLY TO YOU.

All provisions of this Limited Warranty are separate and severable, which means that if any provision is held invalid and unenforceable, such determination shall not affect the validity of enforceability of the other provisions hereof.

Data Ltd. Inc., Inc. extends these warranties only to the first end users of the products. These warranties are non-transferable.

The limited duration of the warranty for the DLI 8400 is as follows:

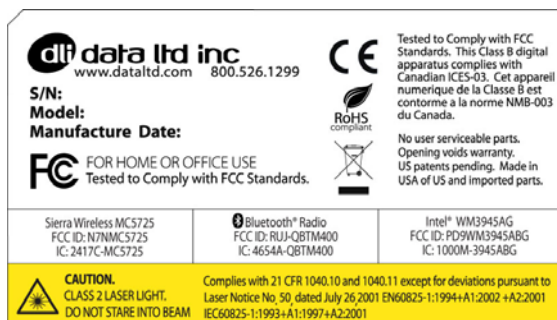
- DLI 8400 terminal with an integrated modules are covered by a one-year limited warranty.
- Touch screens are covered by a one-year limited warranty.
- DLI 8400 Vehicle Mount Cradle, 3-Bay Battery Charger, and 3-Way Battery Adapter Cable, are covered by a one-year limited warranty.
- The limited duration of the warranty for batteries is one year. Use of any battery not sold/ manufactured by Data Ltd. Inc. may damage the terminal and/or the battery and will void the warranty. Batteries returned to Data Ltd. Inc. in a reduced state may or may not be replaced under this warranty. Battery life will be greatly increased when following the battery instructions in the DLI 8400 User's Guide.
- Use of any peripheral not manufactured/sold by Data Ltd. Inc. will void the warranty. This includes but is not limited to: cables, power supplies, cradles, and docking stations.

Regulatory and Safety Approvals for the DLI 8400

The DLI 8400 terminal meets or exceeds the requirements of all applicable standards organizations for safe operation. However, as with any electrical equipment, the best way to ensure safe operation is to operate them according to the agency guidelines that follow. Please read these guidelines carefully before using your DLI 8400 terminal.

Embedded Safety Information Text

The DLI 8400 has the following safety information on the back label of the terminal





DLI 8400 terminal is designed to comply with the most current applicable standards on safe levels of RF energy developed by the Institute of Electrical and Electronics Engineers (IEEE) and the American National Standards Institute (ANSI) and has been recommended for adoption by the Federal Communications Commission (FCC).

The compliance labels are located on the back of the unit:

DLI 8400 WWAN

(CDMA Sierra Wireless Radio) Verizon®

Sierra Wireless MC5725
FCC ID: N7NMC5725
IC: 2417C-MC5725

(GPRS Sierra Wireless Radio) AT&T®

Sierra Wireless MC8790
FCC ID: N7NMC8790
IC: 2417C-MC8790

Parameter	Specification
U.S.A	FCC Part 15, Class B
Canada	ICES-003
European Community	EN 55022 (CISPR 22) Class B EN60950:2000 EN60825-1:1994 + A11 + A2 EN55024:1998



The CE Mark on the product indicates that the system has been tested to and conforms to the provisions noted within the 89/336/EEC Electromagnetic Compatibility Directive and the 73/23/EEC and 93/68/EEC Low Voltage Directive.

For further information, please contact:

Data Ltd. Inc.
703 Data Ltd Parkway
P.O. Box 761
La Porte, IN 46352 USA
(800) 526-1299



Data Ltd. Inc. shall not be liable for use of our product with equipment (i.e., power supplies, personal computers, etc.) that is not CE marked and does not comply with the Low Voltage Directive

FCC Compliance

This device complies with Part 15 of the FCC Rules. Operation is subject to the following two conditions: (1) this device may not cause harmful interference, and (2) this device must accept any interference received, including interference that may cause undesired operation.

This equipment has been tested and found to comply with the limits for a Class B digital device pursuant to Part 15 of the FCC Rules. These limits are designed to provide reasonable protection against harmful interference in a residential installation. This equipment generates, uses, and can radiate radio frequency energy and, if not installed and used in accordance with the instructions, may cause harmful interference to radio communications. If this equipment does cause harmful interference to radio or television reception, which can be determined by turning the equipment off and on, the user is encouraged to try to correct the interference by one or more of the following measures:

- Reorient or relocate the receiving antenna.
- Increase the separation between the equipment and receiver.
- Connect the equipment into an outlet on a circuit different from that to which the receiver is connected.
- Consult the dealer or an experienced radio/TV technician for help.

If necessary, the user should consult the dealer or an experienced radio/television technician for additional suggestions. The user may find the following booklet helpful: "Something About Interference." This is available at FCC local regional offices. Our company is not responsible for any radio or television interference caused by unauthorized modifications of this equipment or the substitution or attachment of connecting cables and equipment other than those specified by our company. The correction is the responsibility of the user. Use only shielded data cables with this system. In accordance with FCC 15.21, changes or modifications not expressly approved by the party responsible for compliance could void the user's authority to operate the equipment.



This device and its antenna must not be co-located or operating in conjunction with any other antenna or transmitter. To maintain compliance with FCC RF exposure guidelines for body-worn operation, do not use accessories that contain metallic components.

When using accessories where the terminal is worn on the body, the terminal's touch screen must face away from the body.

CAUTION! *Any changes or modifications not expressly approved by the grantee of this device could void the user's authority to operate the equipment.*

Canadian Compliance

This Class B digital apparatus complies with Canadian ICES-003. Operation is subject to the following two conditions: (1) this device may not cause harmful interference, and (2) this device must accept any interference received, including interference that may cause undesired operation.

To prevent radio interference to the licensed service, this device is intended to be operated indoors and away from windows to provide maximum shielding. Equipment (or its transmit antenna) installed outdoors is subject to licensing.

Cet appareil numérique de la Classe B est conforme à la norme NMB-003 du Canada.

For European Community Users

Data Ltd. Inc. complies with Directive 2002/69/EC OF THE EUROPEAN PARLIAMENT AND OF THE COUNCIL of 27 January 2003 on waste electrical and electronic equipment (WEEE).

Waste Electrical and Electronic Equipment Information

This product has required the extraction and use of natural resources for its production. It may contain hazardous substances that could impact health and the environment, if not properly disposed.

In order to avoid the dissemination of those substances in our environment and to diminish the pressure on the natural resources, we encourage you to use the appropriate take-back systems for product disposal. Those systems will reuse or recycle most of the materials of the product you are disposing in a sound way.



The crossed out wheeled bin symbol informs you that the product should not be disposed of along with municipal waste and invites you to use the appropriate separate take-back systems for product disposal.

If you need more information on the collection, reuses, and recycling systems, please contact your local or regional waste administration.

You may also contact your supplier for more information on the environmental performances of this product.



Data Ltd. Inc.
703 Data Ltd. Parkway
P.O. box 761
La Porte, IN 46350

Telephone: (800) 526-1299
Fax number: (219) 362-1937