

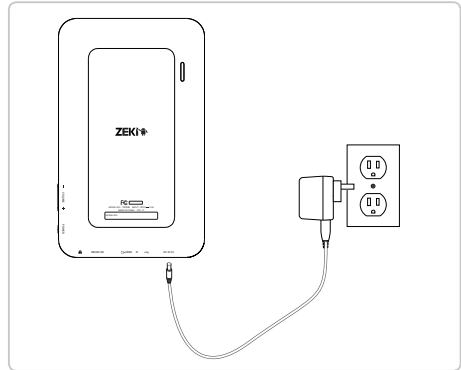


Step 1. Charging

Charging



Before using your new Zeki tablet, it needs to be fully charged.

Connect the tablet to an AC outlet using the included adaptor. Initial charge time will be about 10 hours.



Step 2. Connecting to the Internet

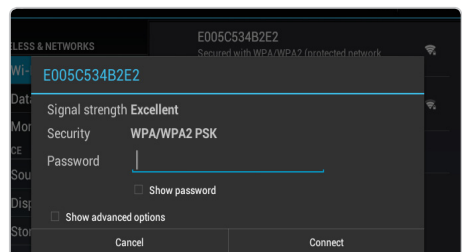
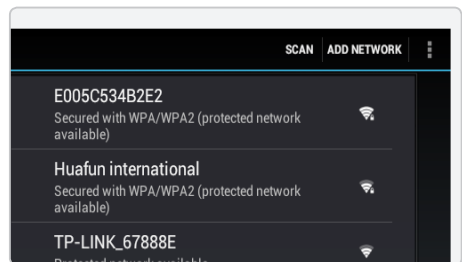
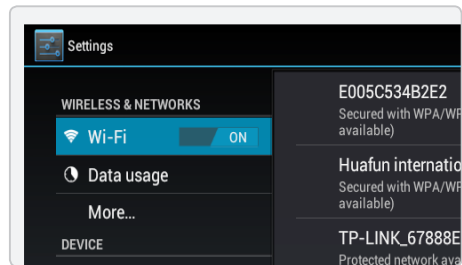
Connecting to Wireless Internet

1. Press the **Settings**  icon.
2. Locate the **Wi-Fi**  setting and slide it to the **On** position.
3. Select a network from the list of available networks.

*To refresh the list of available networks, press the **Scan** button.*

*To manually add a network, select the **Add Network** button.*

4. Select **Connect** from the pop up menu.
5. If the network is secured with a password, enter the password to continue.
6. Once finished connecting, the display will show **Connected** under the name of the network.



Step 3. Installing the Pre-loaded Apps while connected to the Wi-Fi


How to Install the Pre-loaded Apps

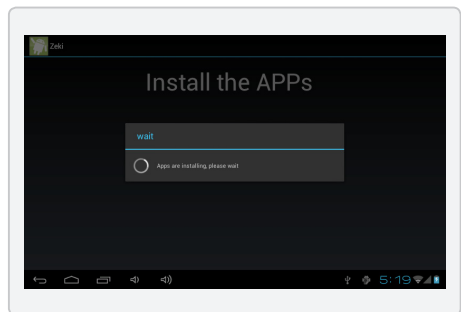
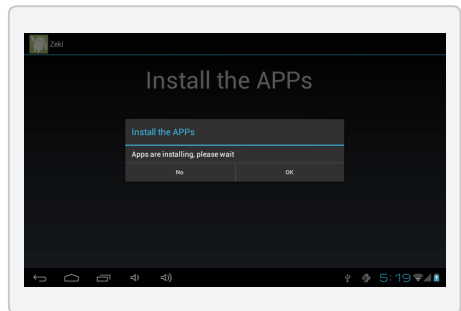
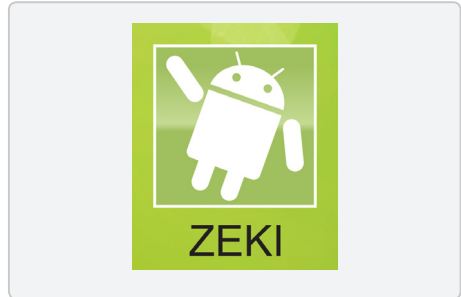
Your Zeki tablet comes with a number of important and useful pre-loaded apps as well as a detailed user's manual.

These include:

- Amazon App Store
- Aldiko E-book Reader
- Es Explorer

To install these apps and access the user's manual, follow the steps below.

1. Press the **App Menu**  button in the upper right hand corner.
2. Press the **Zeki** icon.
3. A pop up menu will appear on the screen.
4. Select **Install the Apps** and press **Ok** when prompted.
5. The message **Apps are installing, please wait** will appear. Please wait until all apps are installed before beginning to use the tablet.
6. To access the user's manual, open the Aldiko E-book Reader app, press **Shelf View** and select the user's manual.



Congratulations! You are now ready to use your new Zeki tablet.

For the full version of the User's Manual, visit:
www.zekitablet.com

FCC Warning:

- This device complies with Part 15 of the FCC Rules. Operation is subject to the following two conditions:
- (1) this device may not cause harmful interference, and
- (2) this device must accept any interference received, including interference that may cause undesired operation.
- Changes or modifications not expressly approved by the party responsible for compliance could void the user's authority to operate the equipment.
- NOTE: This equipment has been tested and found to comply with the limits for a Class B digital device, pursuant to Part 15 of the FCC Rules. These limits are designed to provide reasonable protection against harmful interference in a residential installation. This equipment generates, uses and can radiate radio frequency energy and, if not installed and used in accordance with the instructions, may cause harmful interference to radio communications. However, there is no guarantee that interference will not occur in a particular installation. If this equipment does cause harmful interference to radio or television reception, which can be determined by turning the equipment off and on, the user is encouraged to try to correct the interference by one or more of the following measures:
- -- Reorient or relocate the receiving antenna.
- -- Increase the separation between the equipment and receiver.
- -- Connect the equipment into an outlet on a circuit different from that to which the receiver is connected.
- -- Consult the dealer or an experienced radio/TV technician for help.

FCC RF warning statement: The device has been evaluated to meet general RF exposure requirement. The device can be used in portable exposure condition without restriction.