

S15-015-0028

DRAWING #:

COMPONENT: LABEL, COMP CERT, LOW PROFILE

8

7

6

5

4

3

2

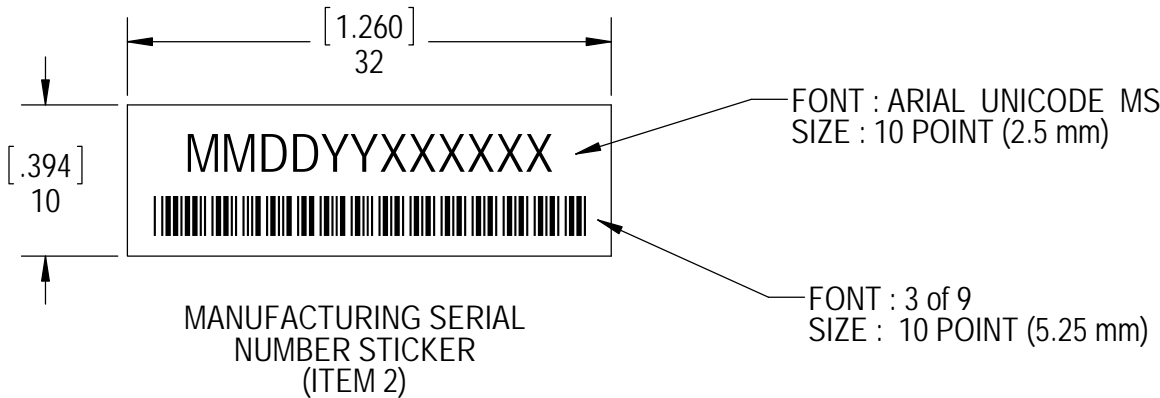
1

DRAWING #: S15-015-0028

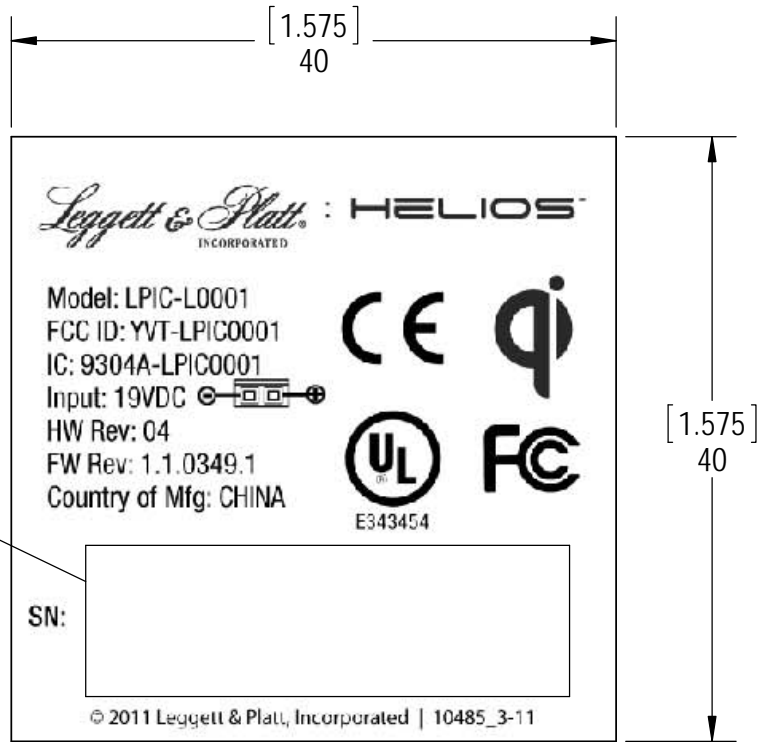
CHANGE

DATE

ECN



MANUFACTURING SERIAL
NUMBER STICKER
(ITEM 2)



MAIN LABEL
(ITEM 1)


PLACE MANUFACTURING
SERIAL NUMBER STICKER
HERE. SEE ENG STD 4
FOR APPLICATION.

- NOTE:** 1. PARTS TO BE COMPLIANT TO EUROPEAN UNION DIRECTIVE 2002/95/EC - RESTRICTION OF HAZARDOUS SUBSTANCES (ROHS).
- MAIN LABEL (ITEM 1)**
- ONLY APPROVED PRINT QUALITY ARTWORK SUPPLIED BY LEGGETT & PLATT IS TO BE USED WHEN CREATING THIS LABEL. USE TEMPLATE "HELIOS PACKAGE LABELS 10485_3-11".
 - MAIN LABEL COLOR: SILVER MATT.
 - MAIN LABEL SPEC: 40MM TALL X 40MM WIDE +0,-2MM ADHESIVE BACK. ADHESIVE SUITABLE FOR ADHERING TO NYLON POLYCARBONATE OR ABS PLASTICS. SEE SHEET 2 OF 2.
- SERIAL LABEL (ITEM 2)**
- SERIAL LABEL COLOR: WHITE.
 - SERIAL LABEL SPEC: 10MM TALL X 32MM WIDE ±1MM ADHESIVE BACK. ADHESIVE SUITABLE FOR ADHERING TO ITEM 1.
 - SERIAL NUMBER IS 6 DIGIT MANUFACTURING DATE FOLLOWED BY A 6 DIGIT SEQUENTIAL NUMBER BEGINNING WITH 000001 ON EACH DATE OF MANUFACTURE IN THE FOLLOWING FORMAT: MMDDYYXXXXXX
MM= 2 DIGIT MANUFACTURING MONTH
DD= 2 DIGIT MANUFACTURING DAY
YY= 2 DIGIT MANUFACTURING YEAR
XXXXXX = SEQUENTIAL NUMBER

SHEET 1 OF 2

BREAK ALL SHARP EDGES UNLESS SPECIFIED

NUMBER REQUIRED:	PRINT DATE:	JOB NUMBER:	DATE NEEDED:
------------------	-------------	-------------	--------------

PROPRIETARY INFORMATION			TOLERANCES								FLATNESS STANDARD		SURFACE ROUGHNESS		<div>ENGINEERING IDEA CENTER</div> <div>Innovation Redefined™</div>		MACHINE: ECOUPLED							
THIS DRAWING IS THE PROPERTY OF LEGGETT & PLATT, INCORPORATED. IT CONTAINS PROPRIETARY INFORMATION AND IS DISCLOSED IN CONFIDENCE WITH THE UNDERSTANDING THAT IT IS NOT TO BE REPRODUCED OR COPIED, DISPOSED OF, DIRECTLY OR INDIRECTLY, AND IS NOT TO BE USED IN WHOLE OR IN PART TO ASSIST IN MAKING OF DRAWINGS, PRINTS, OR APPARATUS, OR PARTS THERE OF, EMBODYING FEATURES OR INFORMATION DERIVED FROM THIS DRAWING WITHOUT THE EXPRESS CONSENT OF LEGGETT & PLATT, INCORPORATED.											HOLD WITHIN 4/M		Ra 6.3				PROJECT ENGINEER: CALEB BROWNING							
											METRIC						COMPONENT: LABEL, COMP CERT, LOW PROFILE							
			DIMENSION RANGE		Over Under	0.5 6	6 30	30 120	120 400	400 1000							1000 2000	2000 4000	0 10	10 50	50 120	120 400	400	SURFACE TREATMENT: N/A
			X	MEDIUM	±0.1	±0.2	±0.3	±0.5	±0.8	±1.2	±2.0	±1°	±30'	±20'	±10'	±5'	ALT. PART NO:		MATERIAL: N/A		SIZE: 40mm x 40mm		DRAWING #: S15-015-0028	REVISION: --
		COARSE	±0.2	±0.5	±0.8	±1.2	±2.0	±3.0	±4.0	±1°30'	±1°	±30'	±15'	±10'										



S15-015-0029

DRAWING #:

COMPONENT: LABEL, COMP CERT, PUCK

8

7

6

5

4

3

2

1

DRAWING #: S15-015-0029

CHANGE

DATE

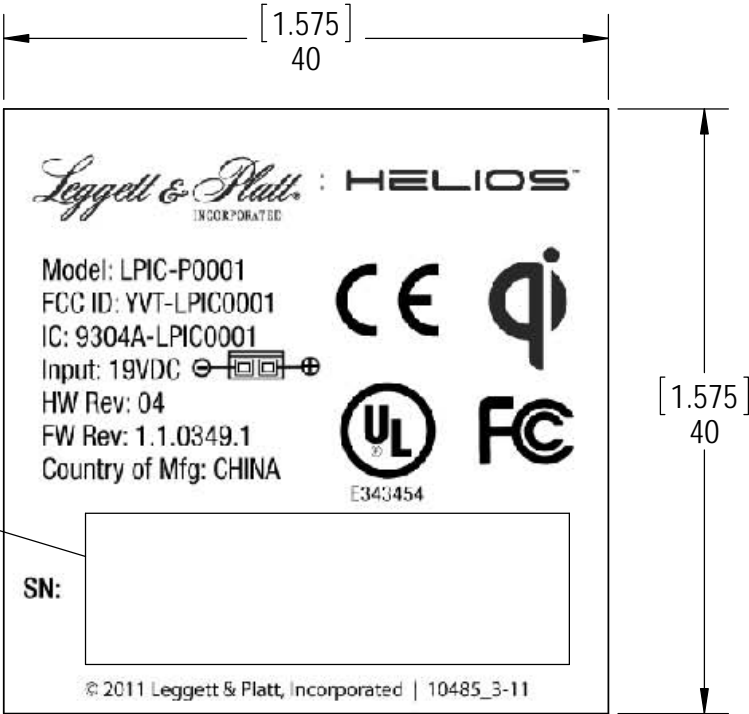
ECN



FONT : ARIAL UNICODE MS
SIZE : 10 POINT (2.5 mm)

FONT : 3 of 9
SIZE : 10 POINT (5.25 mm)

MANUFACTURING SERIAL
NUMBER STICKER
(ITEM 2)



PLACE MANUFACTURING
SERIAL NUMBER STICKER
HERE. SEE ENG STD 4
FOR APPLICATION.

MAIN LABEL
(ITEM 1)


- NOTE:**
- PARTS TO BE COMPLIANT TO EUROPEAN UNION DIRECTIVE 2002/95/EC - RESTRICTION OF HAZARDOUS SUBSTANCES (ROHS).
 - MAIN LABEL (ITEM 1)
 - ONLY APPROVED PRINT QUALITY ARTWORK SUPPLIED BY LEGGETT & PLATT IS TO BE USED WHEN CREATING THIS LABEL. USE TEMPLATE "HELIOS PACKAGE LABELS 10485_3-11".
 - MAIN LABEL COLOR: SILVER MATT.
 - MAIN LABEL SPEC: 40MM TALL X 40MM WIDE +0,-2MM ADHESIVE BACK. ADHESIVE SUITABLE FOR ADHERING TO NYLON POLYCARBONATE OR ABS PLASTICS. SEE SHEET 2 OF 2.

- SERIAL LABEL (ITEM 2)
- SERIAL LABEL COLOR: WHITE.
 - SERIAL LABEL SPEC: 10MM TALL X 32MM WIDE ±1MM ADHESIVE BACK. ADHESIVE SUITABLE FOR ADHERING TO ITEM 1.
 - SERIAL NUMBER IS 6 DIGIT MANUFACTURING DATE FOLLOWED BY A 6 DIGIT SEQUENTIAL NUMBER BEGINNING WITH 000001 ON EACH DATE OF MANUFACTURE IN THE FOLLOWING FORMAT: MMDDYYXXXXXX
MM= 2 DIGIT MANUFACTURING MONTH
DD= 2 DIGIT MANUFACTURING DAY
YY= 2 DIGIT MANUFACTURING YEAR
XXXXXX = SEQUENTIAL NUMBER

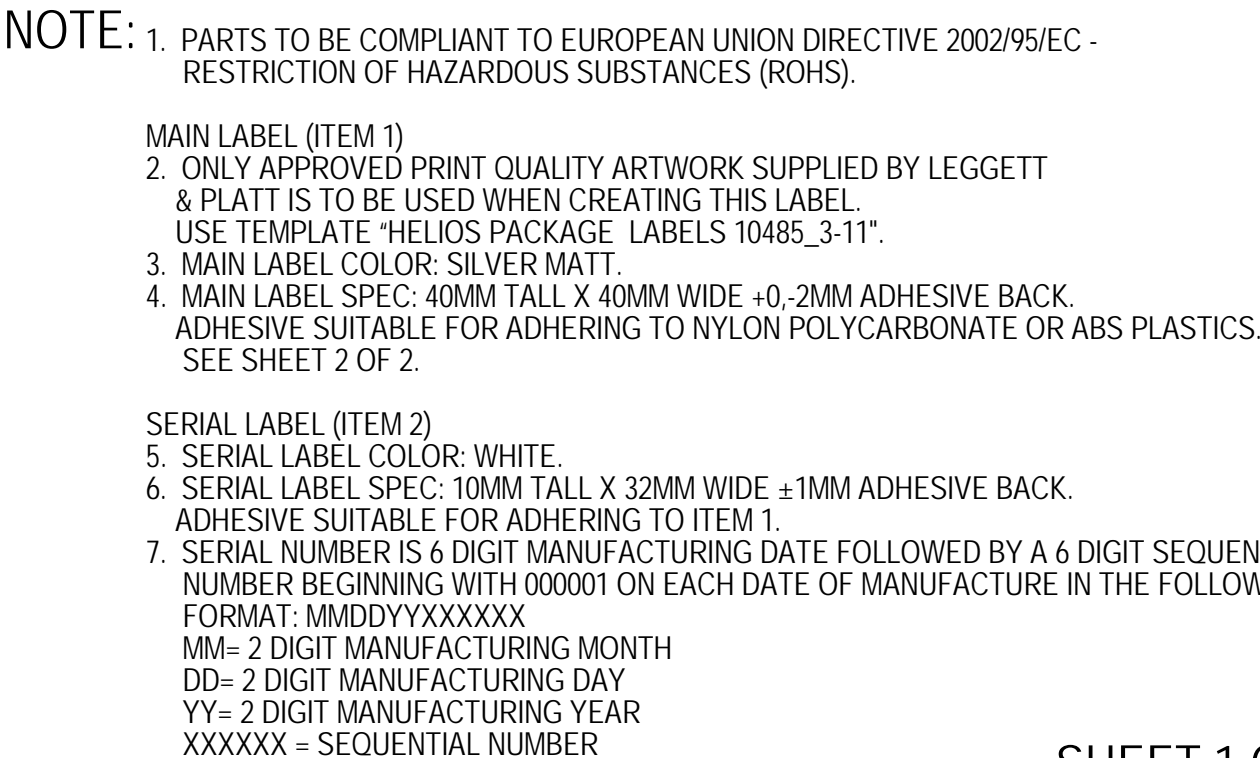
SHEET 1 OF 2

BREAK ALL SHARP EDGES UNLESS SPECIFIED

NUMBER REQUIRED:	PRINT DATE:	JOB NUMBER:	DATE NEEDED:
------------------	-------------	-------------	--------------

PROPRIETARY INFORMATION		TOLERANCES								FLATNESS STANDARD HOLD WITHIN 4/M		SURFACE ROUGHNESS Ra 6.3		<div>ENGINEERING IDEA CENTER</div> <div></div> <div>Innovation Redefined™</div>		MACHINE: ECOUPLED																																																																																																																																																																																																																																																																																																																																																																																																																																																																																																																																																																																																																																																																																																																																																																																																																																																																																																							
<div>THIS DRAWING IS THE PROPERTY OF LEGGETT & PLATT, INCORPORATED. IT CONTAINS PROPRIETARY INFORMATION AND IS DISCLOSED IN CONFIDENCE WITH THE UNDERSTANDING THAT IT IS NOT TO BE REPRODUCED OR COPIED, DISPOSED OF, DIRECTLY OR INDIRECTLY, AND IS NOT TO BE USED IN WHOLE OR IN PART TO ASSIST IN MAKING OF DRAWINGS, PRINTS, OR APPARATUS, OR PARTS THERE OF, EMBODYING FEATURES OR INFORMATION DERIVED FROM THIS DRAWING WITHOUT THE EXPRESS CONSENT OF LEGGETT & PLATT, INCORPORATED.</div>																PROJECT ENGINEER: CALEB BROWNING																																																																																																																																																																																																																																																																																																																																																																																																																																																																																																																																																																																																																																																																																																																																																																																																																																																																																																							
																COMPONENT: LABEL, COMP CERT, PUCK																																																																																																																																																																																																																																																																																																																																																																																																																																																																																																																																																																																																																																																																																																																																																																																																																																																																																																							
		DIMENSION RANGE		Over Under		0.5 6		6 30		30 120		120 400		400 1000		1000 2000		2000 4000		0 10		10 50		50 120		120 400		400		METRIC		ALT. PART NO:		MATERIAL: N/A		SURFACE TREATMENT: N/A		HEAT TREAT: N/A		SCALE: 2:1		DRAWN BY: J.I.M.		DATE: 3-12-2010																																																																																																																																																																																																																																																																																																																																																																																																																																																																																																																																																																																																																																																																																																																																																																																																																																																																											
		MEDIUM		±0.1		±0.2		±0.3		±0.5		±0.8		±1.2		±2.0		±1°		±30'		±20'		±10'		±5'																																																																																																																																																																																																																																																																																																																																																																																																																																																																																																																																																																																																																																																																																																																																																																																																																																																																																													
X		COARSE		±0.2		±0.5		±0.8		±1.2		±2.0		±3.0		±4.0		±1°30'		±1°		±30'		±15'		±10'						ALT. PART NO:		MATERIAL: N/A		SURFACE TREATMENT: N/A		HEAT TREAT: N/A		SCALE: 2:1		DRAWN BY: J.I.M.		DATE: 3-12-2010																																																																																																																																																																																																																																																																																																																																																																																																																																																																																																																																																																																																																																																																																																																																																																																																																																																																											







PLACE MANUFACTURING
SERIAL NUMBER STICKER
HERE. SEE ENG STD 4
FOR APPLICATION.

MAIN LABEL
(ITEM 1)

SHEET 1 OF 2

BREAK ALL SHARP EDGES UNLESS SPECIFIED

NUMBER REQUIRED:		PRINT DATE:		JOB NUMBER:		DATE NEEDED:	
		MACHINE:					
		ECOUPLED					
		PROJECT ENGINEER:					
		CALEB BROWNING					
		COMPONENT:					
		LABEL, COMP CERT, STANDARD					
HEAT TREAT:				SCALE:		DRAWN BY:	
N/A				2:1		J.I.M.	
						DATE:	
						3-12-2010	
SIZE:				DRAWING #:		REVISION:	
40mm x 40mm				S15-015-0030		--	

PROPRIETARY INFORMATION			TOLERANCES								FLATNESS STANDARD HOLD WITHIN 4/M		SURFACE ROUGHNESS Ra 6.3		<div>ENGINEERING IDEA CENTER</div> <div>Innovation Redefined™</div>		MACHINE: ECOUPLED								
THIS DRAWING IS THE PROPERTY OF LEGGETT & PLATT, INCORPORATED. IT CONTAINS PROPRIETARY INFORMATION AND IS DISCLOSED IN CONFIDENCE WITH THE UNDERSTANDING THAT IT IS NOT TO BE REPRODUCED OR COPIED, DISPOSED OF, DIRECTLY OR INDIRECTLY, AND IS NOT TO BE USED IN WHOLE OR IN PART TO ASSIST IN MAKING OF DRAWINGS, PRINTS, OR APPARATUS, OR PARTS THERE OF, EMBODYING FEATURES OR INFORMATION DERIVED FROM THIS DRAWING WITHOUT THE EXPRESS CONSENT OF LEGGETT & PLATT, INCORPORATED.			LENGTH DIMENSION							ANGULAR DIMENSION							METRIC		PROJECT ENGINEER: CALEB BROWNING						
			DIMENSION RANGE	Over Under	0.5 6	6 30	30 120	120 400	400 1000	1000 2000	2000 4000	0 10	10 50	50 120	120 400	400			COMPONENT: LABEL, COMP CERT, STANDARD						
				MEDIUM	±0.1	±0.2	±0.3	±0.5	±0.8	±1.2	±2.0	±1°	±30'	±20'	±10'	±5'			SURFACE TREATMENT: N/A		HEAT TREAT: N/A		SCALE: 2:1	DRAWN BY: J.I.M.	DATE: 3-12-2010
			X	COARSE	±0.2	±0.5	±0.8	±1.2	±2.0	±3.0	±4.0	±1°30'	±1°	±30'	±15'	±10'			ALT. PART NO:		MATERIAL: N/A		SIZE: 40mm x 40mm		DRAWING #: S15-015-0030

