

# SDL330 Internal Photographs

## Introduction

This document contains photos of internal section of the SDL330.

The SDL330 reader is a Radiofrequency Identification (RFID) device. It is designed and manufactured by Shearwell Data Ltd, the market leader for cattle and sheep tags in the United Kingdom.

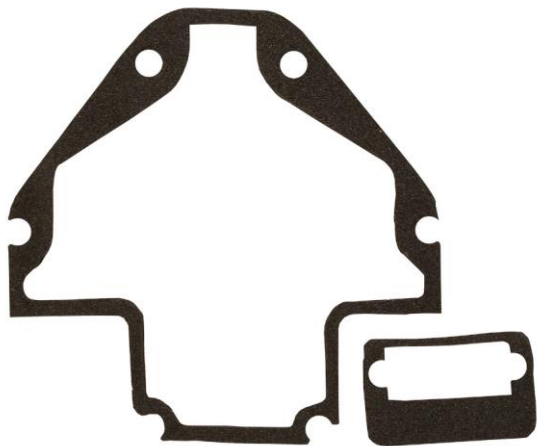
The device is designed to read animal electronic identification (EID) tags in compliance with the international standards ISO 11784 and ISO 11785, which regulates the RFID of animals.

The SDL330 is intended to be used alongside an external device, which will supply the reader with power and record the EID tag data. Shearwell Data Ltd recommends using the SDL330 with a Nautiz X6 rugged mobile, which is designed and manufactured by the Handheld Group. Shearwell Data supplies the Nautiz X6 separately, which comes preinstalled with the reader software.

## Photographs



*Figure 1: Inside of SDL330 Moulding*



*Figure 2: SDL330 Seals*

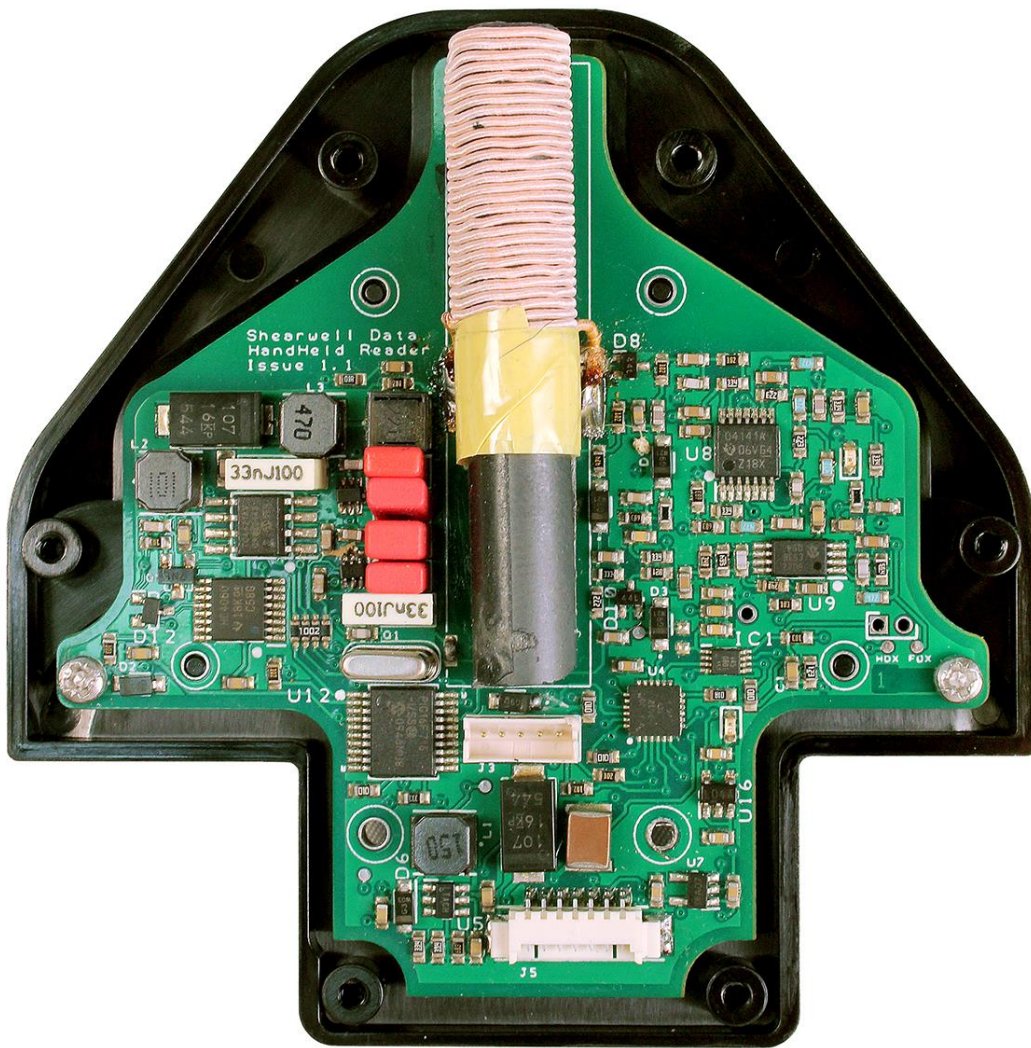


Figure 3: SDL330 PCB

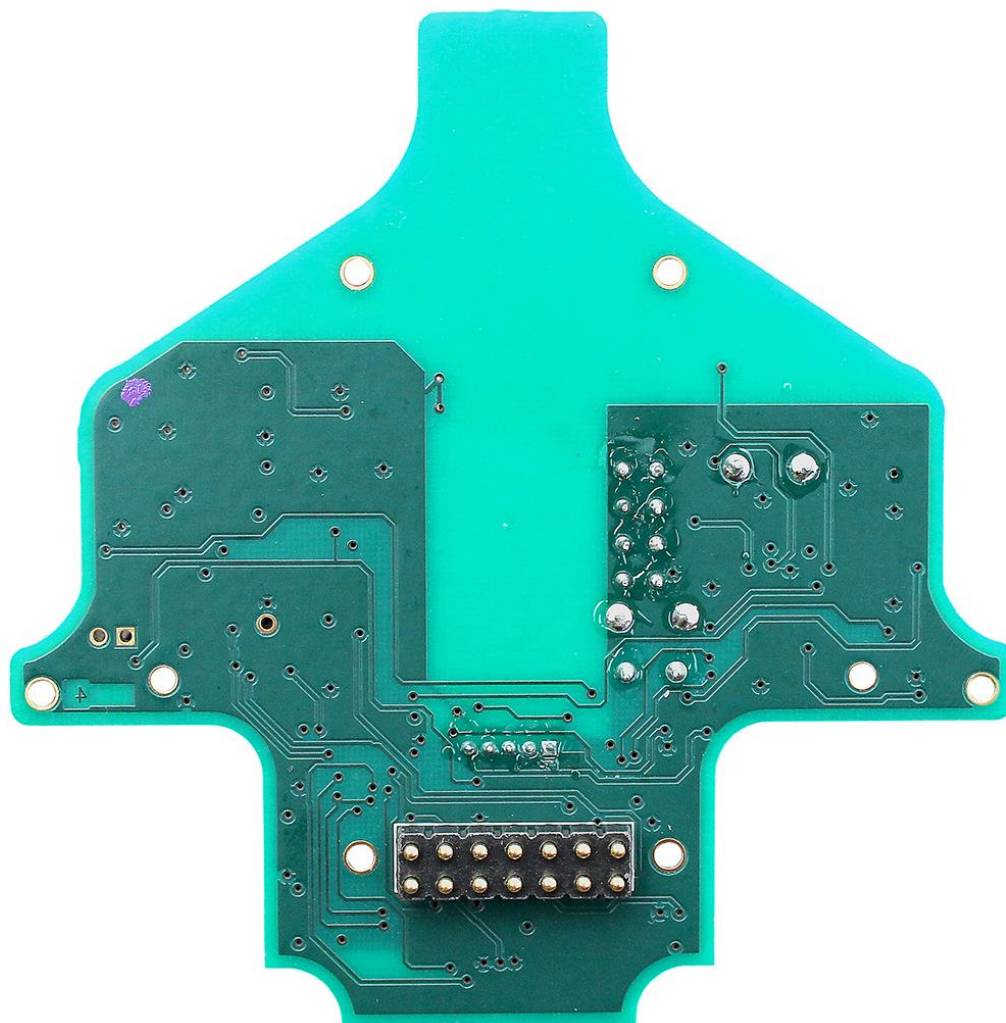


Figure 4: Rear Side of SDL330 PCB