

## RFASWC TX

The RFASWCtx is a wireless transmitter device designed to add steering wheel controls to vehicles that do not have OE steering wheel controls installed. Coupled with the appropriate RFASWCrx module, the RFASWCtx is able to give the driver control of their OEM, or aftermarket radio without taking their hands off the steering wheel. The RFASWCtx can be positioned anywhere on the steering wheel.

### **Interface Components**

RFASWCtx

Keypad

Trim ring

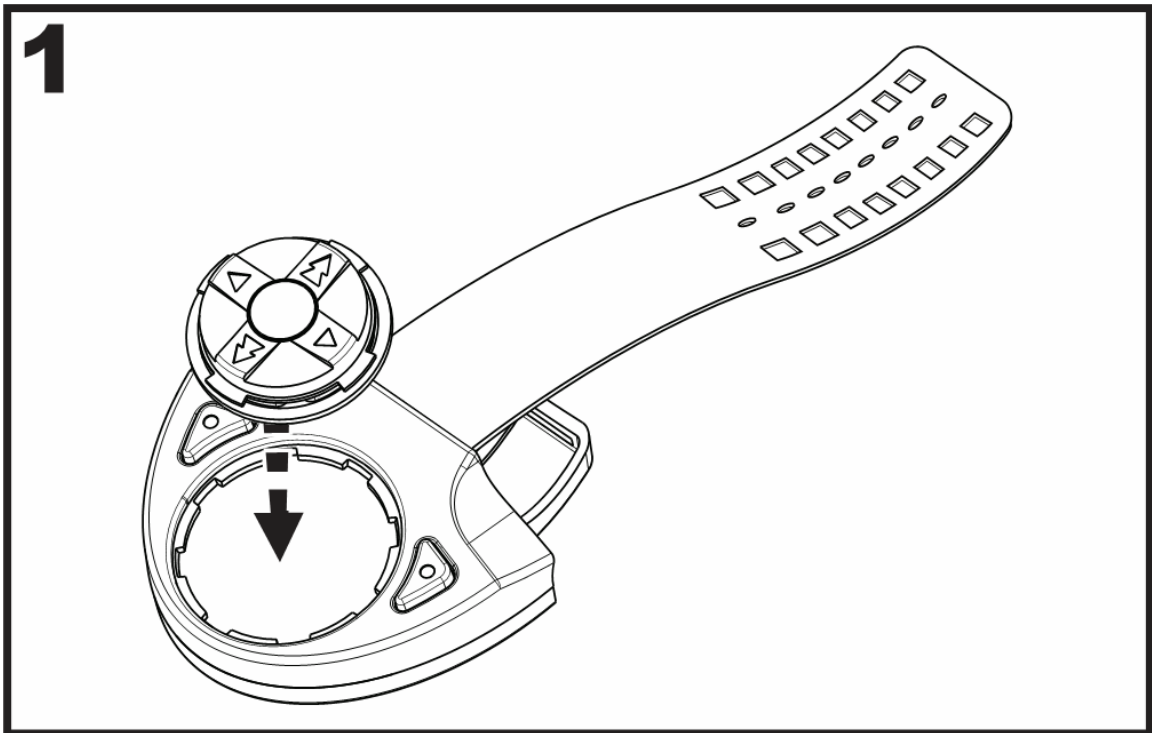
Strap cover

### **Tools Required For Installation**

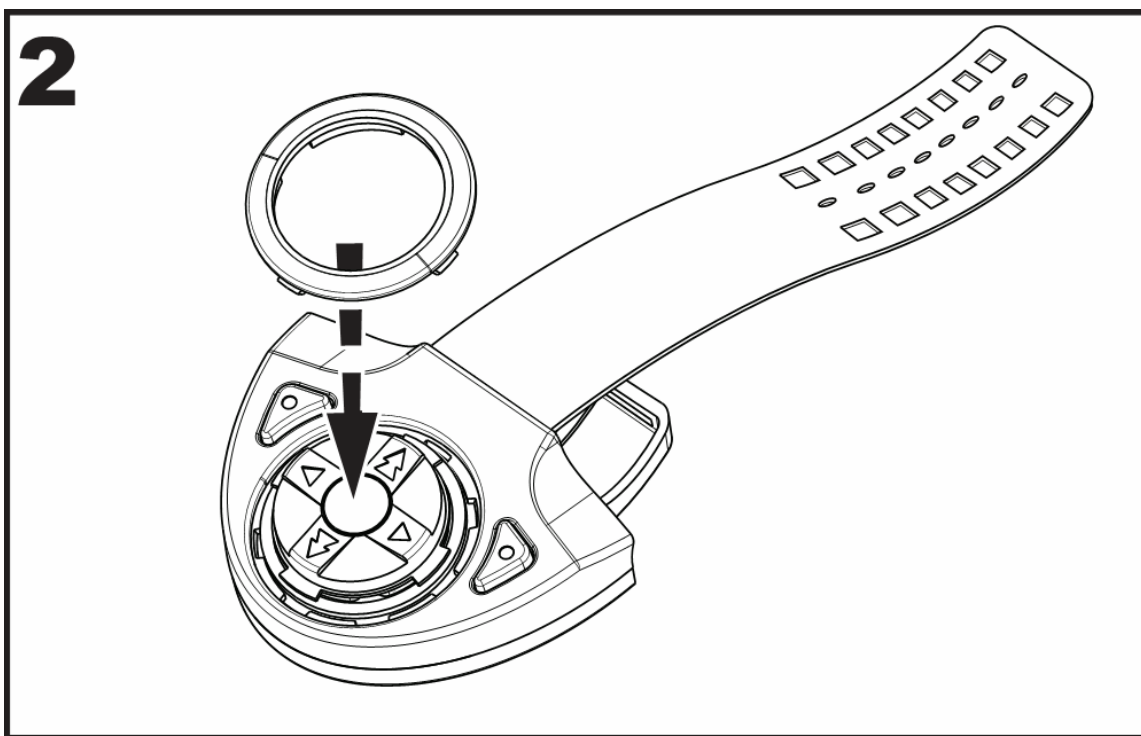
Cutting Tool

### **Mounting the RFASWC transmitter**

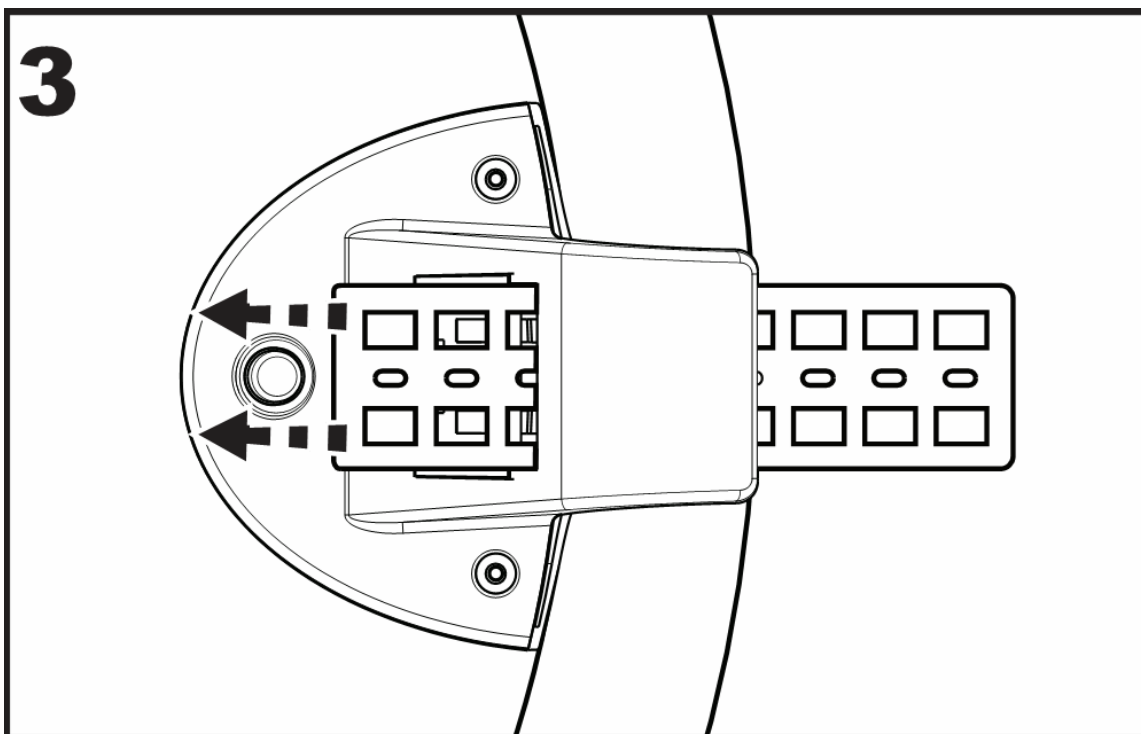
1. Place button pad in the RFASWCtx with the volume up arrow (^) in the spot where you want volume up to be.(fig. 1)



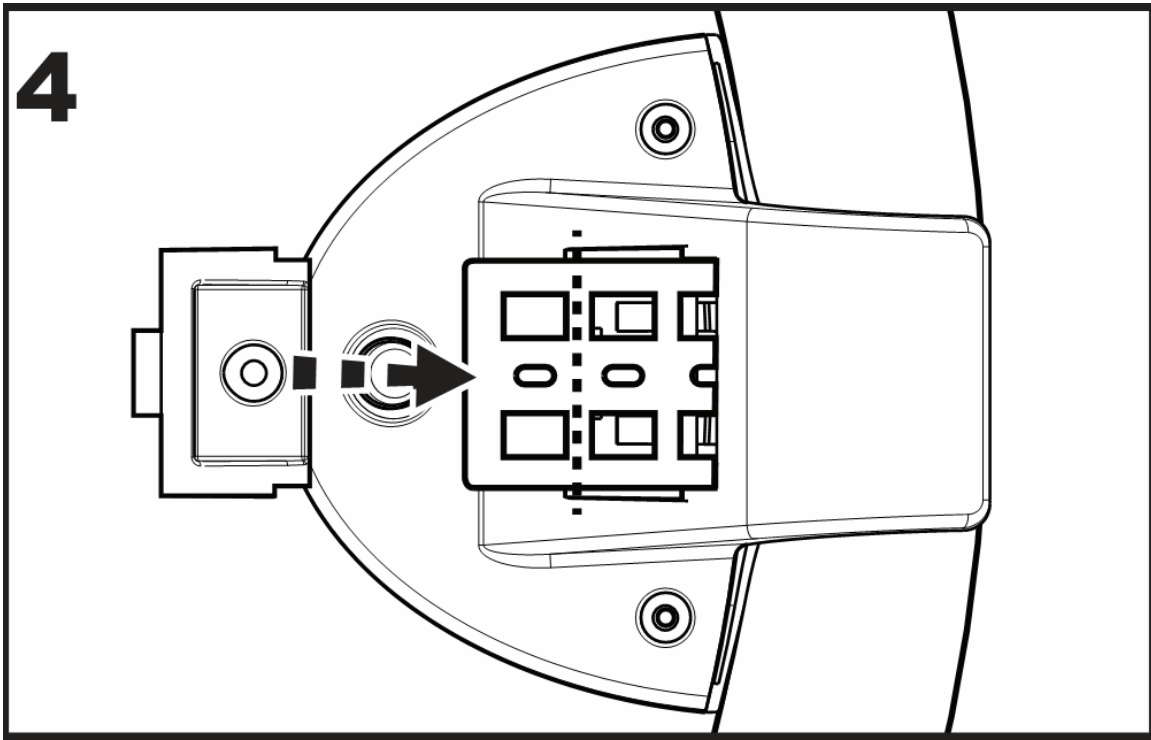
2. Insert and twist trim ring clockwise to secure keypad in place. (fig. 2)



3. Install RFASWCtx transmitter in desired place on steering wheel, wrapping the rubber strap around the steering wheel, through the slot, and hook it into the back side of the RFASWCtx. (fig. 3)



4. Cut off the unused portion of the rubber strap and screw in strap cover with provided screw. (Do not over tighten screw) (fig.4)



#### **Setting up the RFASWCtx**

1. Press the Red and Green buttons simultaneously for 5 seconds, and then press volume up for two seconds. This will orientate your button direction.
2. Turn on the ignition and press volume up on the RFASWCtx. This will “marry” the RFASWCtx to the interface.

**NOTE:** If you are replacing a transmitter you must turn on the ignition and within the first 10 seconds press and hold the source button for ten seconds. This will “marry the new transmitter.

**FCC ID: YUB-RFASWC1**

**IC: 9386A-RFASWC1**

**This device complies with Part 15 of the FCC Rules. Operation is subject the following two conditions:**

- (1) This device may not cause interference, and**
- (2) This device must accept any interference received, including interference that may cause undesired operation.**

**This device complies with Industry Canada license-exempt RSS standard(s). Operation is subject the following two conditions:**

- (1) This device may not cause interference, and**
- (2) This device must accept any interference, including interference that may cause undesired operation of the device.**

**Warning!**

**Changes or modifications not expressly approved by the manufacturer could void the user's authority to operate the equipment.**