



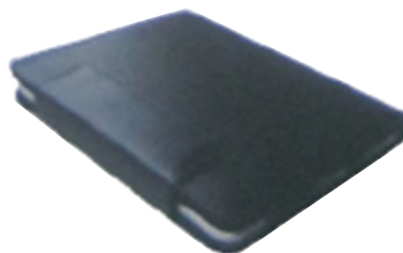
3-IN-1 iPad Wireless Bluetooth Keyboard Case User Guide

 GEMBOX™ Item 20805



Packing Contents:

1. PU Leather Case with Keyboard
2. USB Power Charging Cable
3. USB Wall Charger (Optional)
4. User Guide



1.0 Product Features:

1. Built-in wireless Bluetooth 2.0 silicone keyboard.
2. Stylish protective PU leather case designed for iPad.
3. iPad display stand for easy viewing.
4. Rechargeable lithium-ion battery lasts for approximately 45 hours per charge.
5. Special iPad home screen key for one-touch access to a variety of apps.
6. Lightweight, quiet keystrokes, dust-proof & spill-proof.
7. Energy saving keyboard sleep mode.



Bluetooth Keyboard Specifications and Pairing Instructions

2.0 Keyboard Specifications

1. Bluetooth v. 2.0 interface standard
2. Operating Distance: 30 feet/10 meters
3. Modulation System: GFSK 2.4 GHz
4. Transmitting Power: Class 2
5. Operating Voltage: 3.0-5.0
6. Working Current: <5.0 mA
7. Standby Current: 2.5 mA
8. Sleeping Current: <200 uA
9. Charging Current: >100 mA
10. Standby Time: 100 days
11. Theoretical Working Time: 25 days
12. Uninterrupted Working Time: 45 hours
13. Charging Time: 4.5 hours
14. Lithium-ion Battery Capacity: minimum 430 mAh
15. Key Strength: $80 \pm 10g$
16. Key Life: 350 million strokes
17. Operating Temperature: $-10^{\circ}C \sim +55^{\circ}C$
18. Humidity: 20% ~ 50%

3.0 Bluetooth Keyboard Pairing

- Step 1: Turn on the power toggle switch. The [power] and [Bluetooth] indicator light will appear in 3 seconds. The indicator light will stay on for 5 seconds, then go off.
- Step 2: Press the [connect] button. The [Bluetooth] indicator light will be blinking, and the [power] indicator will be on. The keyboard is now ready to connect to the iPad.

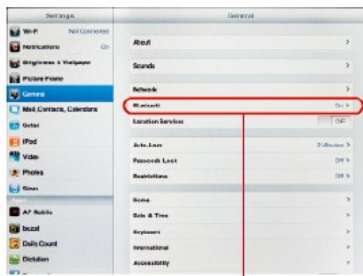


- Step 3: Turn on and unlock iPad. Click the iPad [Settings] icon.



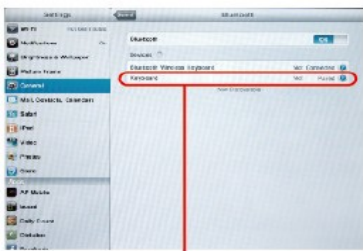


Step 4: On the settings menu, select item [General] to access [Bluetooth] settings. Click on [Bluetooth] to turn on the connection. iPad will automatically search for a Bluetooth-enabled device.



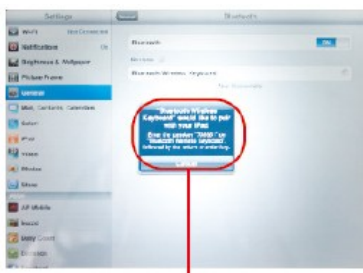
Click to turn on Bluetooth setting

Step 5: Wireless Keyboard found. Click on the device to connect.



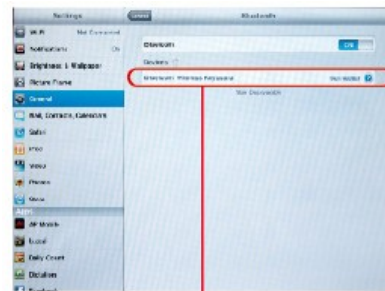
Click on the keyboard to connect

Step 6: Enter the password code as displayed on the screen.



Enter password code using the wireless keyboard

Step 7: Wireless keyboard connected successfully. [power] indicator light will stay on until the keyboard is switched off.



Keyboard connected successfully

Special Note:

The wireless keyboard can be connected to any iPhone 3G, 3GS, 4, or iPod Touch that has iOS 4.0 or later installed. For other Bluetooth-enabled devices, please verify the Bluetooth standard & compatibility before attempting to connect to the keyboard.

4.0 Charging

When the battery power is low, the [power] indicator light will start blinking, indicating it is time to recharge the keyboard.

Step 1: Connect the USB power cable to the keyboard charging interface

Step 2: Connect the charging cable into:

- (A) USB power source (OR)
- (B) Wall power charger (optional), and plug into power outlet.

The [charge] red indicator light will stay on when the keyboard is charging. Once it finished charging, the [charge] indicator light will turn off.

5.0 Energy Saving Sleep Mode

The keyboard will kick into sleep mode when it is inactive for 15 minutes, and the keyboard [power] indicator light will go off. To activate from sleep mode, just press any key and wait 3 seconds. The keyboard will come back on.

6.0 Safety Caution

1. Keep the item away from sharp objects.
2. Do not place heavy objects on top of the keyboard.
3. Do not microwave the item.
4. Do not force or distort the keyboard.
5. Keep away from oil, chemicals or any other organic liquids.

7.0 Cleaning

Clean the silicone keyboard with water, alcohol, or an alcohol based disinfectant.

8.0 Troubleshooting

(A) Unable to connect. Make sure:

1. The power switch is on.
2. The keyboard is within the operating distance.
3. The battery is charged.
4. iPad Bluetooth setting is on.
5. Wireless keyboard is connected to iPad.
6. Wireless keyboard has been paired with the iPad.

(B) Unable to charge keyboard. Make sure:

1. The USB power cable is connected properly to the keyboard and the power source.
2. The wall charger is plugged into the power outlet.

Federal Communication Commission Interference Statement

This equipment has been tested and found to comply with the limits for a Class B digital device.

Pursuant to Part 15 of the FCC Rules, these limits are designed to provide reasonable protection against harmful interference in a residential installation. This equipment generates usage and can radiate radio frequency energy and, if not installed and used in accordance with the instructions, may cause harmful interference to radio or television reception, which can be determined by turning the equipment off and on.

This device complies with Part 15 of the FCC Rules. Operation is subject to the following two conditions: (1) this device may not cause harmful interference, and (2) this device must accept any interference received, including interference that may cause undesired operation.

FCC Caution: Any change or modifications not expressly approved by the party responsible for compliance could void the user's authority to operate this equipment.

IMPORTANT NOTE:

FCC Radiation Exposure Statement:

1. This equipment complies with FCC radiation exposure limits set forth for an uncontrolled environment. End users must follow the specific operating instructions for satisfying RF exposure compliance.
2. This transmitter must not be co-located or operating in conjunction with any other antenna or transmitter.

© 2010 Wilpax USA, Inc. All Rights Reserved.

iPad, iPhone, iPod Touch are trademarks of Apple Inc.



Distributed by Wilpax USA, Inc.

10073 Valley View Street, #123
Cypress, California 90630, U.S.A.
E-Mail: service@wilpaxusa.com

20805-UG Rev. A
MADE IN CHINA