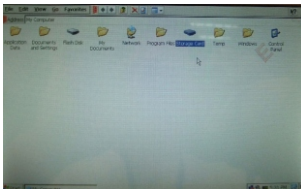


Remove SD Card:

Close all open programs and files from the card, light press card, the card will be pop-up, pull out the card.



Notice:

1. Card is inserted into the correct position, otherwise it will be damaged.
2. If the SD card is write-protected, it will not be formatted or write data.
3. Do not plug the card several times in a short time, or it may be damaged.
4. Recommend to use the major brands of SD cards, in order to avoid any non-compliant.

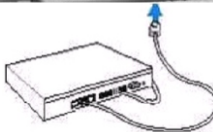
4.6 USB Device

WM8505 SmartBook has three USB interfaces, to connect, such as U Disk, USB mouse, USB keyboard and other USB devices.



4.7 Connect to the Internet via a wired network card

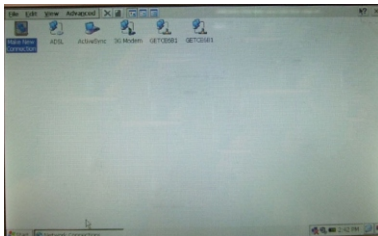
Connect the SmartBook to the LAN Set Ethernet connection:

1. Click "Start" menu, select "Settings" - "Network Connections."
2. Double-click "GETCE681", Pop-up the setting window of the network card.



MA200 USER MANUAL

3. Select "To obtain IP addresses through DHCP".
4. Click "OK" on the upper right corner of the window to save settings and exit. You can also select "Specify an IP address" to manually set the IP address.
6. After the success of network connections, the icon  in the notification area will become .

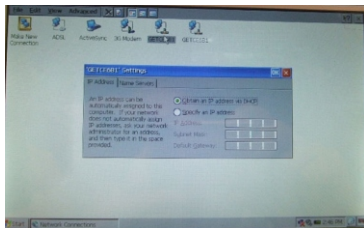


4.8 Connect to the Internet through a wireless network card

1. In the notification area can see the wireless card icon, as shown in Figure.




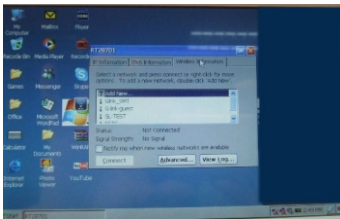
2. Left Double-click the icon to pop up the wireless LAN settings window.
3. Select "Wireless Information" in the window.
4. The name of the modem / router / internet box all around will be listed.



5. Click to select the name of the device you want to connect.
 6. If the device is not encrypted, can directly click "Connect" or double-click the device name begin to connect.
- If the device is encrypted, double-click the device name can pop up the "Wireless Network Properties", as the following picture show.

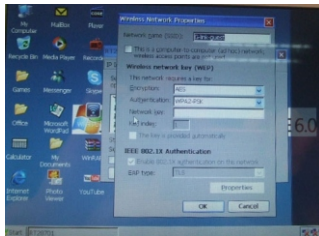
Properties", as the following picture show.

7. Enter password in the "Network key".
8. Click "OK" to confirm and return "RT28701" interface. Click "OK" begin to connect.
9. After the success of network connections, the icon in the notification area will become 

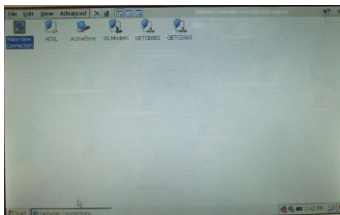


4.9 Connect to the Internet via 3G Module

1. Install 3G module driver.
2. Insert the 3G module into the USB interface of the SmartBook.
3. Click "Start" menu, select "Settings" in the "Network and Dial-up Connections" in the open Network Connections window, find the 3G device icon, double-click.



4. Enter "CNET" in the "Domain" input box in the pop-up window, and then click on "Connect" Start Connection.
5. After the success of connection the notification area appears icon 3G module, users can connect to the Internet via 3G module.



5. Applications

5.1 Internet Explorer

- (1) Double-click icon in the desktop to open Internet Explorer.
- (2) Input the network address you want to browse in.
- (3) Choose "File" - "Off" or press (Alt + F4) or directly click on to close the window are browsing.
- (4) Choose "File" - "Save as ..." To directly save the website into the Nand Flash.



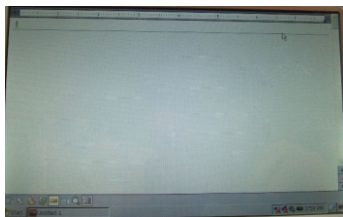
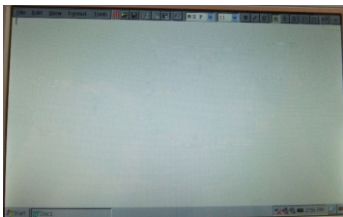
5.2 Office Software

SmartBook contains more than two office softwares. Support the document reader for PDF, Word, Excel, PPT and other formats.

Users can obtain network information, download music through IE.

1) WordPad and Text Maker

WordPad and Text Maker is a simple word processor program, with a simple text editing features. Users can directly open such as doc, dot, pwd, and pwt suffixes documents in the window, use the including tool to do simple editing. Double-click the icon "Microsoft WordPad" can open the following window.



Double-click the icon Text Maker to open the following window.

2) Excel and Plan Maker

Work table handler, which can perform the viewing and editing features of suffix worksheet xls file. Double-click the Excel icon to open the following window: Double-click the icon Plan Maker to open the following window:

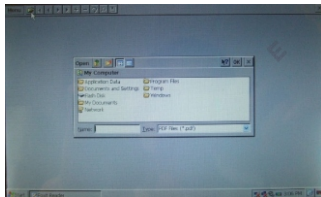
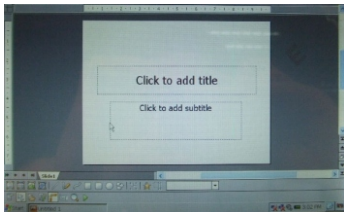
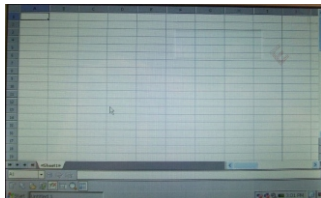
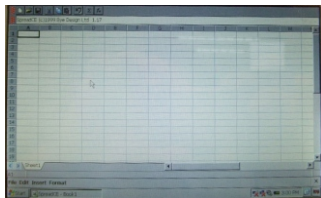
3) PPT document editing and viewing

MA200 USER MANUAL

SmartBook support presentations procedures to do editing and viewing PPT or PPS format document. Double-click the icon Presentations to open the following window:

4) PDF document

SmartBook support Foxit Reader view PDF format documents. Double-click icon Foxit Reader to run the program: Select "Open File" in the "Menu", choose the PDF format file to open.

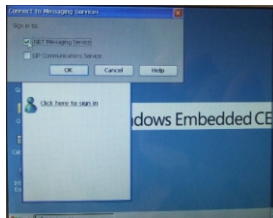
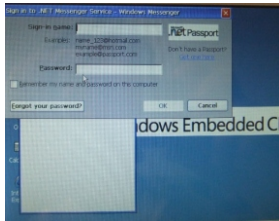
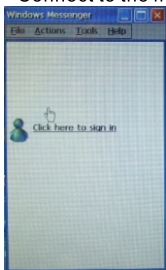


5.3 Instant Messenger

WM8505 SmartBook support Internet Messenger and Skype three kinds of instant messaging software formats.

(1) Internet Messenger - MSN

- 1) Confirm SmartBook have access to the network, double-click "Messenger" icon, enter the login window.
- 2) In the program window, click on the "Click here to log in" ,pop-up "Connect to the messaging service" window.



- 3) Use ".NET Messaging Service" of the window to talk with Hotmail contacts, use the "SIP" and the enterprise to communicate with colleagues. Select the ".NET Messaging Service" and click OK.
- 4) Enter the login window, enter a user name and password in the appropriate place, click OK to begin the login.
- 5) After the login is successful, you can contact with your friends.

(2) Skype

Confirm SmartBook have accessto the network, double-click the Skype icon in the upper right toopen the window, click "OK" button to enter Skype main interface.

After login success,your friends list will appear at the top left.

Click "Log in as New User" on Tools menu in the lower-left. Enter the account and password.

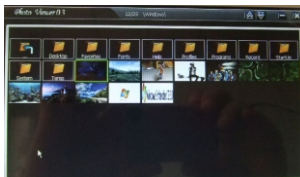
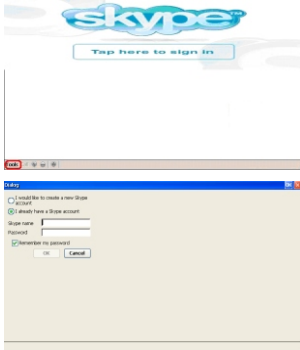
5.4 Multimedia

(1)Picture Viewer

Picture Viewer is an image viewing tool, you can view the pictures, zoom images, and can simply edit the picture. Double-click the Picture Viewer icon to start running.

In the top of the window, select the folder, the folder in the image files as thumbnails mode appears below.

Double-click the thumbnail you can see the picture full screen. Through the "View" and the "Tools" can do some simple image operations.



MA200 USER MANUAL

(1)Recorder

Double-click "Recorder" icon to run the recording program.

Click "Record" button on the panel, select the audio file to save, will enter the recording state.

Use the on-board microphone or plug in an external microphone for recording. Click "Stop" will stop recording,press "Play" before the recorded broadcast content, press "Open" can open the file saved in SmartBook that have been recorded.



(2)Multimedia PlayerTCPMP

TCPMP can play MP3, WMA, AAC and other format audio files, AVI, MPEG4 and other format video files.

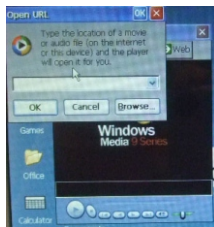
Double-click the "Player" icon to run the player. Using the "File" - "Open file", open the file you want to play.

Click the button on the player panel can do play / pause, stop play, previous / next file playback, volume adjustment and other operations.



(3)Multimedia PlayerMedia Player

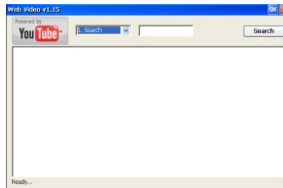
Double-click the "Media Player" to open player.Click "File" - "Open", through "Browse ..." option in the pop-up window to select the file you want to play. Click "OK", the selected file start playing.The window is automatically minimized when the music is playing.



(4)Web Video

Confirm SmartBook have access to the network, double-click the icon Web Video to open the program.

Select "Search" in the pop-up box to the left of the window, , input any interest contents in the right box, click on "Search" button. Below will show search for relevant content, double-click programs can directly watch.



The left side of the box there are other options: featured, most viewed, most discussed, top favorite, for fast search program.

5.5 Games

Games that WM8505 SmartBook currently supported are:Solitaire and consumption bubble.

Double-click the name of the game to run games, specific operation refer to the game Instructions.

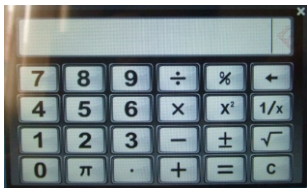
5.6 Other

(1)File Compression

Winrar is a file compression software that can compress and decompress the file. Support for RAR and ZIP file formats. Double-click "Winrar" icon to run the program. Select the file, press the Winrar icon on the menu can compress the file. Select the compressed file can browse the archive contents inside. Select the compressed package files can directly extract and view.

(2)Calculator

Double-click the "Calculator" icon to open the scientific calculator interface as follows. Direct click the button with the mouse like the use of scientificcalculator.

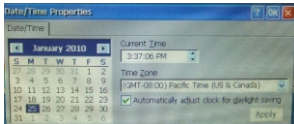


6. System Settings

SmartBook allows users to set up the system information, such as the system clock, date, sound, password, and power supplies.

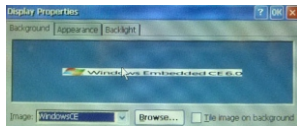
6.1 Time Setting

Double-click the pop-up "date / time" properties window in the notification area, change the system date, time and time zone.



6.2 Display

To change the background wallpaper, the default appearance and backlight settings, press the right mouse button on the desktop background, there will be shown the "Display Properties" window as below.



Click to select the "Start" menu - "Settings" - "Control Panel", double-click "Display" can also open the window as above. Users can select a different image from the "image" drop-down list, or by clicking on the "Browser" button, then select a picture as background wallpaper. Appearance and background light can also select the corresponding label in the window to set.

Notice:

Background image must be saved in "Nand Flash

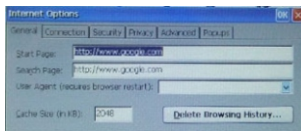
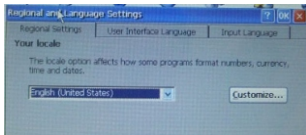
6.3 Input Panel

You can modify the existing SIP and options settings. Click to select the "Start" menu - "Settings" - "Control Panel", double-click the "Input Panel" to open the following window.

6.4 Internet Options

All settings related with Internet can be setted in Internet Options, including start page, search pages, security, and so on.

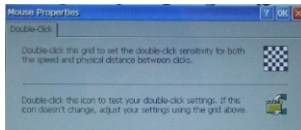
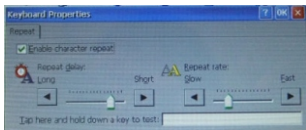
Click to select the "Start" menu - "Settings" - "Control Panel", double-click "Internet Options" to open the following window.



6.5 Keyboard

Can change the repeat delay and speed of the keyboard.

Click to select the "Start" menu - "Settings" - "Control Panel", double-click "keyboard" to open the following window

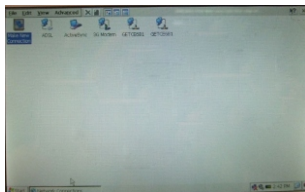


6.6 Mouse

To change the sensitivity of the mouse's double-click. Click to select the "Start" menu - "Settings" - "Control Panel", double-click "Mouse" to open the following window.

6.7 Network and Dial-up Connections

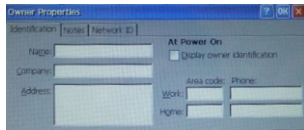
Click to select the "Start" menu - "Settings" - "Control Panel", double-click "Network and Dial-up Connections", open the Network Connections window as follows.



6.8 Owner

You can modify the identity of the user stored in SmartBook details, such as name, company, address, etc..

Click to select the "Start" menu - "Settings" - "Control Panel", double-click the "owner" to open the owner of the Properties window as shown below.



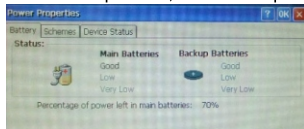
6.9 Password Setting

To change the password settings and security options. Click to select the "Start" menu - "Settings" - "Control Panel", double-click "Password", then open the password properties window as following.

After setted the password-protected,you need to enter your password in your next visit to SmartBook.

6.10 Power

From the Power Properties window you can view the power state. Click to select the "Start" menu - "Settings" - "Control Panel", double-click "power", Power Properties window is shown as below.



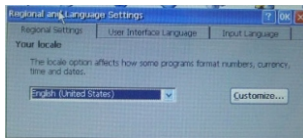
Notice:

Battery power can be seen only when the power adapter is not connected.

6.11 Locale Setting

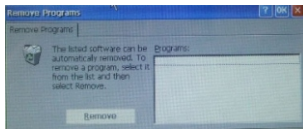
This setting can change the display numbers, currency, date and time format. Recommend to use "User Interface Language" and "Input Language" default setting options.

Click to select the "Start" menu - "Settings" - "Control Panel", double-click "Regional Settings", regional and language settings window as shown below.



6.12 Remove Programs

Users can remove your installed programs through this option. Click to select the "Start" menu - "Settings" - "Control Panel", double-click "Remove Programs", the pop-up Remove Programs window is shown as below.

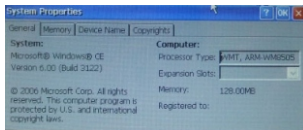


6.13 Storage Manager

You can manage storage device through "store information". Select storage devices, the total capacity, unallocated, and the sector size will be listed below. The selected storage devices can be formatted or removed in this window.

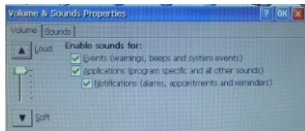
6.14 System

To view the System Properties information and change the system memory allocation. Click to select the "Start" menu - "Settings" - "Control Panel", double-click "System", System Properties window is shown as below.



6.15 Volume and Sound

Adjust the volume and start the event sound. Click to select the "Start" menu - "Settings" - "Control Panel", double-click "volume and voice", the volume and sound properties window is shown as below.



6.16 System Reset

When the SmartBook encounter system hangs or abnormal operating condition, please use a small pointer (not a metal material) to press the reset switch at the bottom of the SmartBook to initialize the whole system. After reset, restart your computer

FCC WARNING

This device complies with Part 15 of the FCC Rules. Operation is subject to the following two conditions:

- (1) this device may not cause harmful interference, and
- (2) this device must accept any interference received, including interference that may cause undesired operation.

This device must be installed to provide a separation distance of at least 2.5 cm from all persons and must not be collocated or operating in conjunction with any other antenna or transmitter.

NOTE 1: This equipment has been tested and found to comply with the limits for a Class B digital device, pursuant to part 15 of the FCC Rules. These limits are designed to provide reasonable protection against harmful interference in a residential installation. This equipment generates, uses and can radiate radio frequency energy and, if not installed and used in accordance with the instructions, may cause harmful interference to radio communications. However, there is no guarantee that interference will not occur in a particular installation. If this equipment does cause harmful interference to radio or television reception, which can be determined by turning the equipment off and on, the user is encouraged to try to correct the interference by one or more of the following measures:

- Reorient or relocate the receiving antenna.
- Increase the separation between the equipment and receiver.
- Connect the equipment into an outlet on a circuit different from that to which the receiver is connected.
- Consult the dealer or an experienced radio/TV technician for help.

NOTE 2: Any changes or modifications not expressly approved by the manufacturer could void the user's authority to operate the equipment.

NOTE 3: The manufacturer is not responsible for any radio or TV interference caused by unauthorized modifications to this equipment. Such modifications could void the user's authority to operate the equipment.