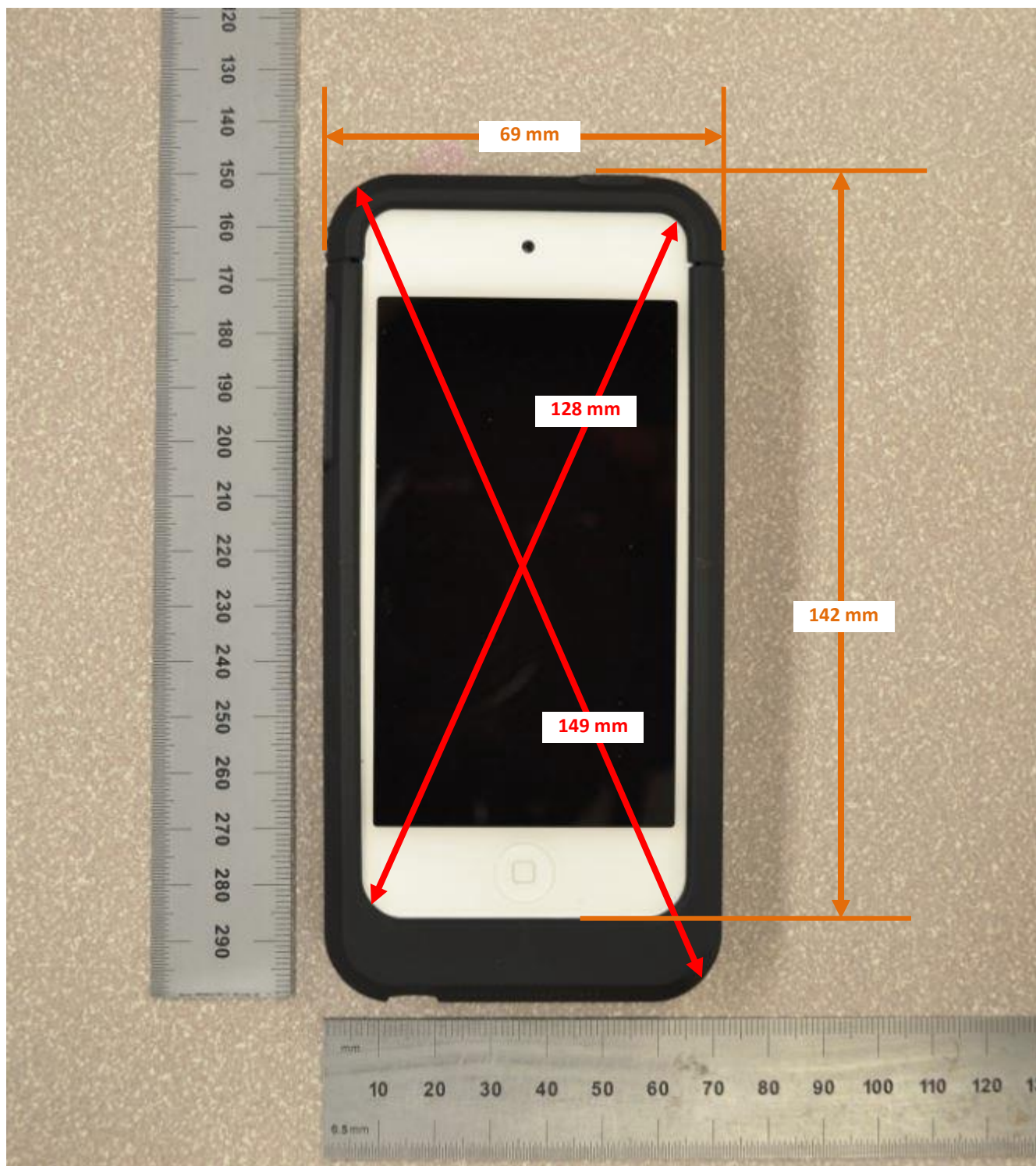


## DUT and SAR Set-up Photos

### Overall Dimensions



Front View of the DUT



Rear View of the DUT



## Setup Photos

Handset Vertical and Horizontal Reference Lines

Vertical  
Center Line



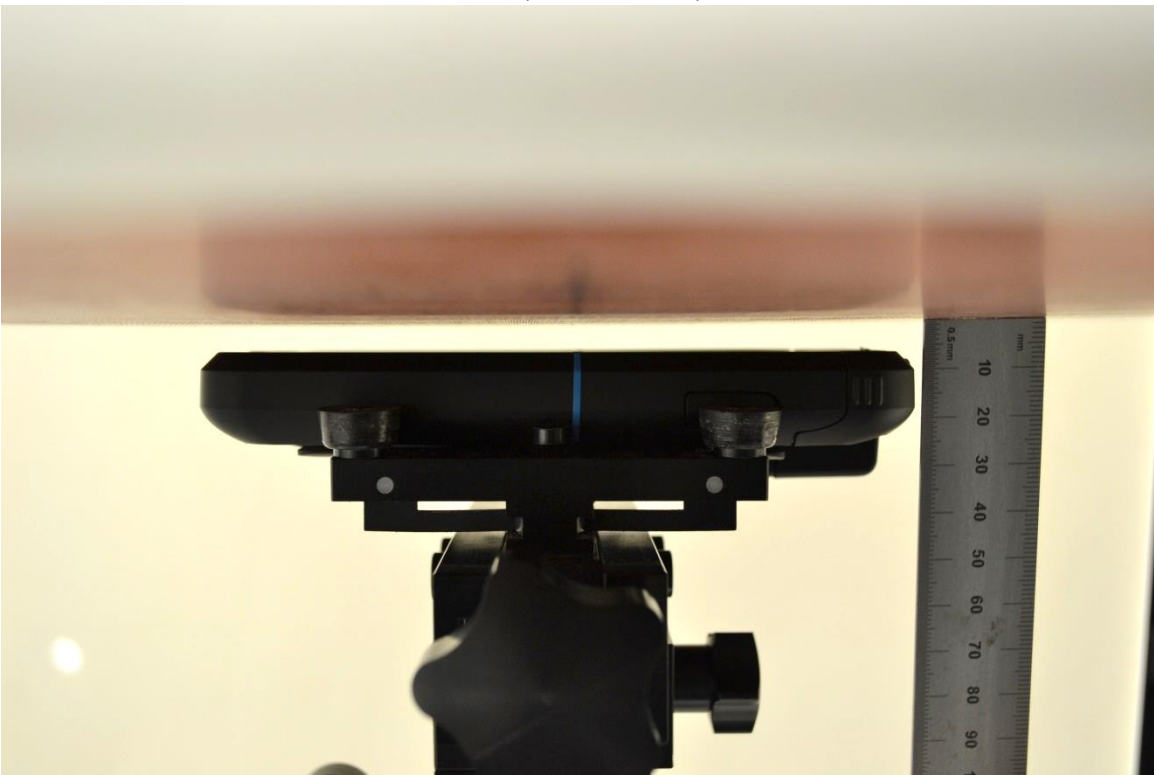


## Body-worn Accessory & Hotspot mode Exposure Conditions

Rear (0 mm distance)



Front (5mm distance)



Antenna Dimensions & Separation Distances

Edge 4  
(Left)

Edge 2  
(Right)

