

INFINEA TAB MINI

User Manual



LEGAL NOTICE

“Made for iPhone” mean that an electronic accessory has been designed to connect specifically to the iPhone and has been certified by the developer to meet Apple performance standards. Apple is not responsible for the operation of this device or its compliance with safety and regulatory standards. Please note that the use of this accessory with an iPhone may affect wireless performance.

THE INFORMATION IN THIS DOCUMENT CANNOT BE REPRODUCED IN ANY MECHANICAL, ELECTRICAL OR ELECTRONIC WAY AND UNDER ANY CIRCUMSTANCES WITHOUT THE WRITTEN CONSENT FROM DATECS LTD.

Address: 4 Datecs Street, Sofia 1592, Bulgaria
Phone: +359 2 816 55 50
Fax: +359 2 816 55 65
E-mail: export@datecs.bg

REVISION HISTORY

Version	Data	Change description
1.0.0	11.10.2024	First Release
1.1.0	06.11.2024	Updated "GENERAL VIEW"

REGULATORY

FCC Statement

FCC ID: YRW-ITABMINI

This equipment has been tested and found to comply with the limits for a Class B digital device, pursuant to part 15 of the FCC Rules. These limits are designed to provide reasonable protection against harmful interference in a residential installation. This equipment generates, uses and can radiate radio frequency energy and, if not installed and used in accordance with the instructions, may cause harmful interference to radio communications. However, there is no guarantee that interference will not occur in a particular installation. If this equipment does cause harmful interference to radio or television reception, which can be determined by turning the equipment off and on, the user is encouraged to try to correct the interference by one or more of the following measures:

- Reorient or relocate the receiving antenna.
- Increase the separation between the equipment and receiver.
- Connect the equipment into an outlet on a circuit different from that to which the receiver is connected.
- Consult the dealer or an experienced radio/TV technician for help.

Caution: Any changes or modifications to this device not explicitly approved by manufacturer could void your authority to operate this equipment.

This device complies with part 15 of the FCC Rules. Operation is subject to the following two conditions: (1) This device may not cause harmful interference, and (2) this device must accept any interference received, including interference that may cause undesired operation.

RF Exposure Information

The device has been evaluated to meet general RF exposure requirement. The device can be used in portable exposure condition without restriction.

this device contains FCC ID:YRW-BT50

CONTENTS

INFINEA TAB MINI	1
USER MANUAL.....	1
TECHNICAL SPECIFICATIONS	6
GENERAL VIEW	8
GETTING STARTED.....	9
ATTACHING APPLE DEVICE TO INFINEA TAB MINI	11
OPERATION MODES	12
SCANNING BARCODES.....	13
MAGNETIC CARD READING	14
CONTACTLESS CARD READING	15
CARE, MAINTENANCE AND WARRANTY.....	16

TECHNICAL SPECIFICATIONS

Processor	ARM Cortex® M4 Security Microcontroller
Memory	32KB I&D-Cache 1MB Internal RAM 8KB OTP
Application Memory	8MB Serial Flash
Keypad	<ul style="list-style-type: none"> 1 button for device turning ON/OFF and for scanning barcodes
Magnetic Card Reader	<ul style="list-style-type: none"> 3-track bi-directional reading
Contactless Card Reader (option)	<ul style="list-style-type: none"> NFC-A/ISO 14443 Type-A NFC-B/ISO 14443 Type-B NFC-V/ISO 15693
Barcode Reader (option)	Honeywell N4680 Series 2D Scan Engine - image sensor 640 x 480 (Aimer Type: Red Dot LED, Illumination: White LED)
Supported Barcode Types	<p>2D* Imager Supported Symbolologies:</p> <p>Linear:</p> <p>Codabar, Code 11, Code 128, Code 2 of 5, Code 39, Code 93 and 93i, EAN/JAN-13, EAN/JAN 8, IATA Code 2 of 5, Interleaved 2 of 5, Matrix 2 of 5, MSI, GS1 Databar, UPC-A, UPC E, UPC-A/EAN-13 with Extended Coupon Code, Coupon GS1 Code 32(PARAF), EAN-UCC Emulation</p> <p>2D Stacked:</p> <p>Codablock A, Codablock F, PDF417, MicroPDF417</p> <p>2D Matrix:</p> <p>Aztec Code, Data Matrix, MaxiCode, QR Code, Chinese Sensible (Han Xin), Grid Matrix, Dot Code</p> <p>Postal:</p> <p>Australian Post, British Post, Canadian Post, China Post, Japanese Post, Korea Post, Netherlands Post, Planet Code, Postnet</p>
Battery	Rechargeable Li-Ion Battery 3.7V / 1100 mAh
Connectivity	<ul style="list-style-type: none"> USB - Device Serial BLE 5.1 (Optional) Serial pass-through USB Type C connector
Audio indication	Electro-Magnetic Buzzer
Apple devices compatibility	iPad Mini 6 th generation, iPad 10 th generation
Certifications	CE, FCC, UKCA, REACH, RoHS, Proposition 65, TSCA
Dimensions (L x W x H), mm	103 x 88 x 24.2
Weight, g	118
Environmental	<p>Operating: -10°C to +40°C / 5 to 90% RH</p> <p>Storage: -15°C to +50°C / 5 to 90% RH</p>
Power Supply	<ul style="list-style-type: none"> 5V through USB type C connector 5V through single or 5 station charger
Accessories	<ul style="list-style-type: none"> Single station charger - SC-1 5 stations charger - GC-5

* Specification can be change without any notice.



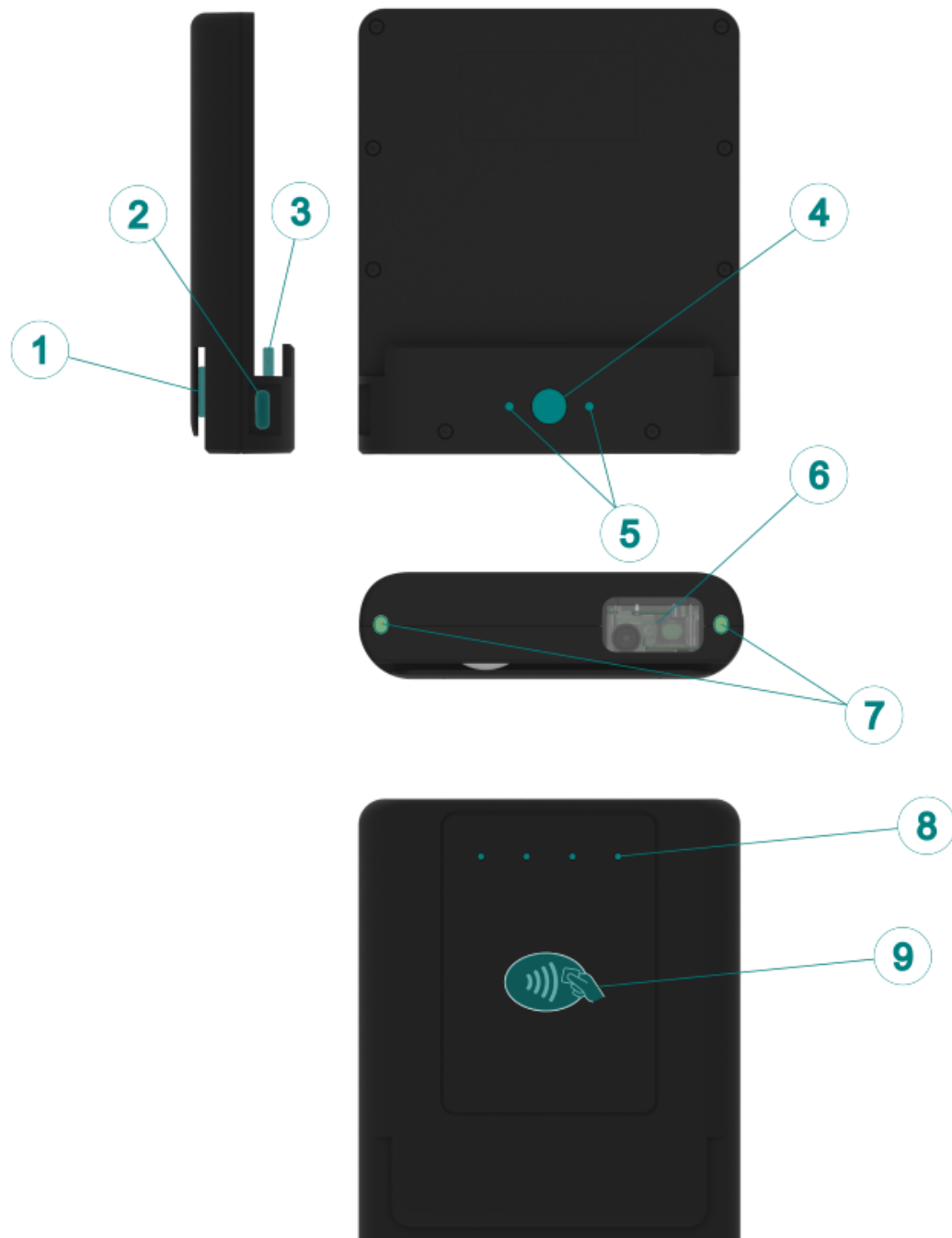
Use only original equipped DATECS cable USB-C to USB-C (SYI-0150B) for charging Apple device.

The minimum requirements of USB adapter is 5V/2.1A.



Waste Electrical & Electronic Equipment

The symbol means that according to local laws and regulations your product shall be disposed of separately from household waste at the end of its working life. To prevent possible harm to the environment or human health from uncontrolled waste disposal, please separate this from other types of wastes and recycle it responsibly to promote the sustainable reuse of material resources.

GENERAL VIEW

1. Magnetic Head / Magnetic Card Reader
2. USB1 Type-C
3. USB2 Type-C
4. Button for device turning ON/OFF and for scanning barcodes
5. Indications LEDs
6. Barcode engine
7. Charging pads
8. Indications for NFC reading
9. NFC Logo (Indicates the center of the NFC field)

GETTING STARTED

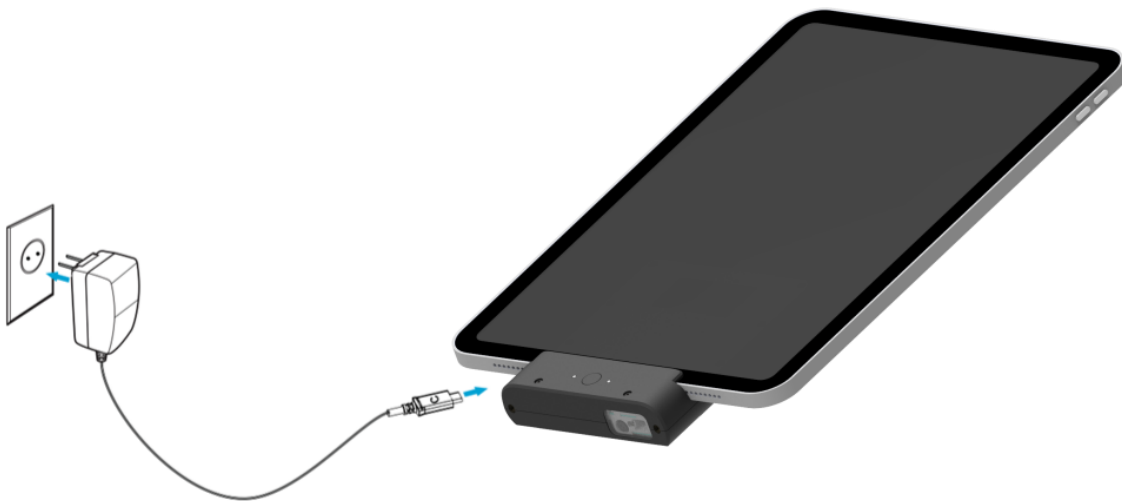
Infinea Tab Mini has rechargeable Li-ion battery. Can be charge from USB port or Charging pads.



Before first use, battery must be fully charged.
If the device is fully discharged, charging time to fully charged would be approx. 6 hours.






Depends of the settings, Infinea Tab Mini can pass-through input power supply from USB connector or Charging pad to Apple device. Charging current to Apple device can be selected.

Charging form USB adapter:



- **When charging the device, make sure the power adapter is plugged into a socket near the devices and is easily accessible.**
- **Unplug the charger from electrical outlets and the device when not in use.**

Table for Infinea Tab M status LED:

LED1 indication		Description
	No indication	Device is turned off/sleep mode
	Blue Indication (blinking)	Device is in active mode/wake up
LED2 indication		Description
	Green indication (blinking)	Infinea Tab Mini is charging from outside power supply (from USB connector or Charging pads)
	Green indication	Infinea Tab Mini is fully charged, can be disconnect the outside power supply
	No indication	Not charging (no outside power) or Device is turned off

ATTACHING APPLE DEVICE TO INFINEA TAB MINI

Infinea Tab Mini and Apple device must be turn to top side, showed on picture below. After that Apple device must be sledged to Infinea Tab Mini USB Type-C connector.



OPERATION MODES

For start operating with Infinea Tab Mini is need to be attached Apple device and installed application for iOS. For downloading the latest SDK please contact with your distributor:

For turn On Infinea Tab Mini press On button and unlock Apple device screen.

When the Infinea Tab Mini is active blue LED on front side will blink. If the blue LED is not blinking Infinea Tab Mini is turned off.

SCANNING BARCODES

Infinea Tab Mini can scan 1D and 2D barcodes. To scan barcode first, activate the scanner (by pressing and holding the scan button). Then position the scanning engine to the center of the barcode by aiming and the illumination box is over the outer edges of the barcode, as shown on the picture below. Slowly pull back or forward the unit, while increasing or decrease the distance between the barcode and the scanning head, until the barcode has been read by the scanner. Barcode data will have shown on the use application for iOS.

Infinea Tab Mini support different types of scanning modes:

- Single Scan
- Multi Scan
- Motion Detect
- Multi Scan without duplicates



MAGNETIC CARD READING

The Infinea Tab Mini has a built-in magnetic card reader. The card reader incorporates a (3) track magnetic read head, requiring a single swipe to read field data from all three tracks.

The magnetic reading head faces up, towards the top of the bottom cover of the cradle. When swiping the card into the reader, the magnetic stripe must be facing down, as shown in the figure below. Keep the edge of the card flat on the inner base of the reader to ensure that the magnetic stripe passes over the reading head evenly.



CONTACTLESS CARD READING

The Infinea Tab Mini has a contactless card reader. Contactless card reader is located on the bottom side. Contactless card must be placed there (showed on the picture below).



CARE, MAINTENANCE AND WARRANTY

- Keep the Infinea Tab Mini side of the reach of small children.
- Keep the Infinea Tab Mini dry. Precipitation, humidity and liquid contain minerals that will corrode electronic circuits.
- Do not use or store in dusty or dirty areas.
- Do not drop or knock Infinea Tab Mini
- Keep the device and battery away from excessive heat and direct sunlight. Do not place them on or in heating devices, such as microwave ovens, stoves, or radiators.
- Dispose the battery, and accessories according to local regulations. They should not be disposed of in normal household waste. Improper battery use may lead to fire, explosion, or other hazards.
- Do not use, store or transport the device where flammables or explosives are stored (in a gas station, oil depot, or chemical plant, for example). Using your device in these environments increases the risk of explosion or fire.



- Do not open the Infinea Tab Mini. Only qualified personnel can open the device and make repair. If the Infinea Tab Mini is not working, please contact your dealer.
- Allowing unqualified personnel to service your Infinea Tab Mini may result in damage to your Infinea Tab Mini and will void your warranty.