



Easi-Scope 2
User Manual

August 2010

Ver. 1.0



Table of Contents

1	Warnings.....	1
2	Features.....	2
3	Package Contents	2
4	Minimum Requirements	3
4.1	Supported Operating Systems	3
5	Part and Control Locations	3
6	Installing Hardware Driver and Application.....	4
6.1	Windows XP SP3.....	4
6.2	Windows Vista / Windows 7	6
7	Using your Easi-Scope 2	8
7.1	Charging your Easi-Scope 2	8
7.2	Start Up	8
7.3	Pairing.....	9
7.4	Pairing multiple Easi-Scope 2s	10
8	Using the Easi-Scope 2 with Easi-Scope 2 Application.....	11
8.1	Launching the Application	11
8.2	Taking a Photo	12
8.3	Recording a Video	13
8.4	Advance Settings	16
8.4.1	Changing Resolution	16
9	Support & Warranty	18



1 Warnings

Please Read All Instructions Carefully Before Using

- Please retain these instructions for future reference
- Tuff-Cam 2 contains a non-replaceable, rechargeable battery
- Do not attempt to remove the battery
- In the event of an electro-static discharge, your Easi-Scope 2 may malfunction. In this case, please switch it off and then back on again
- Warranty is void if the case is opened for any reason
- The warranty does not cover any data loss nor any consequential loss of information

FCC compliance

NOTE: THE MANUFACTURER IS NOT RESPONSIBLE FOR ANY RADIO OR TV INTERFERENCE CAUSED BY UNAUTHORIZED MODIFICATIONS TO THIS EQUIPMENT. SUCH MODIFICATIONS COULD VOID THE USER AUTHORITY TO OPERATE THE EQUIPMENT

NOTE: This equipment has been tested and found to comply with the limits for a Class B digital device, pursuant to Part 15 of the FCC Rules. These limits are designed to provide reasonable protection against harmful interference in a residential installation. This equipment generates, uses and can radiate radio frequency energy and, if not installed and used in accordance with the instructions, may cause harmful interference to radio communications. However, there is no guarantee that interference will not occur in a particular installation.

If this equipment does cause harmful interference to radio or television reception, which can be determined by turning the equipment off and on, the user is encouraged to try to correct the interference by one or more of the following measures:

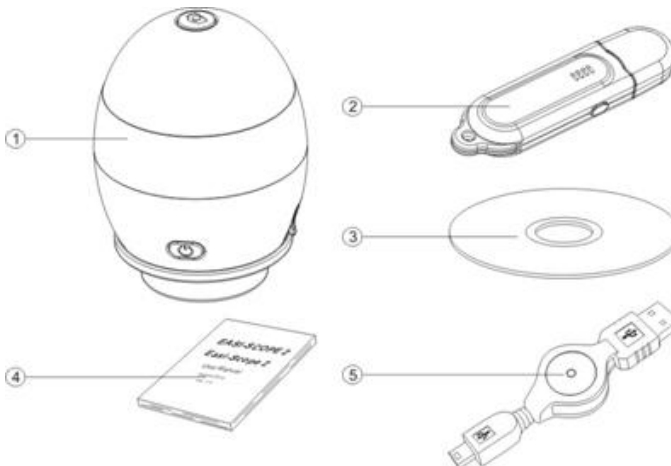
- Reorient or relocate the receiving antenna.
- Increase the separation between the equipment and receiver.
- Connect the equipment into an outlet on a circuit different from that to which the receiver is connected.
- Consult the dealer or an experienced radio/TV technician for help

2 Features

Easi-Scope 2 is a USB Wireless Microscope which uses the 2.4GHz frequency band to transmit digital images of up to 640 x 480 resolution with a range of over 10m. The USB receiver of your Easi-Scope 2 can pair with up to four (4) Easi-Scope 2s simultaneously and allow you to switch between the multiple paired devices.

3 Package Contents

- | | |
|-----------------------|----|
| 1. Easi-Scope 2 | x1 |
| 2. USB Receiver | x1 |
| 3. Installation CD | x1 |
| 4. User Manual | x1 |
| 5. USB Charging Cable | x1 |



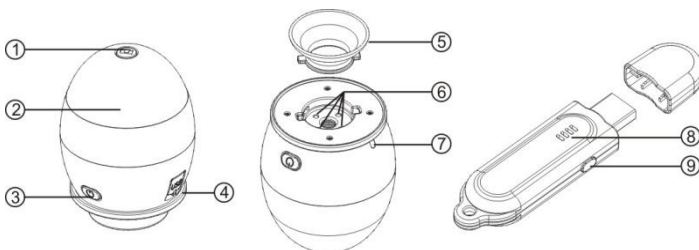
4 Minimum Requirements

1.8 GHz Intel / AMD Processor;
256 Mbytes of RAM;
USB Version 2.0;
A Compact Disc Drive;

4.1 Supported Operating Systems

Your Easi-Scope 2 is fully tested and support on Windows XP SP3, Windows Vista and Windows 7.

5 Part and Control Locations

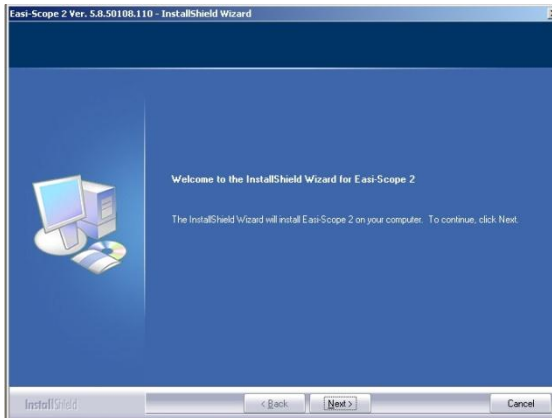


- | | |
|---------------------------------|---------------------|
| ① Snap Button | ② Focusing Dial |
| ③ Power / Pairing Button | ④ USB Socket |
| ⑤ Objective Lens Tube | ⑥ LED Illumination |
| ⑦ Status Indicator | ⑧ Channel Indicator |
| ⑨ Channel Select/Pairing Button | |

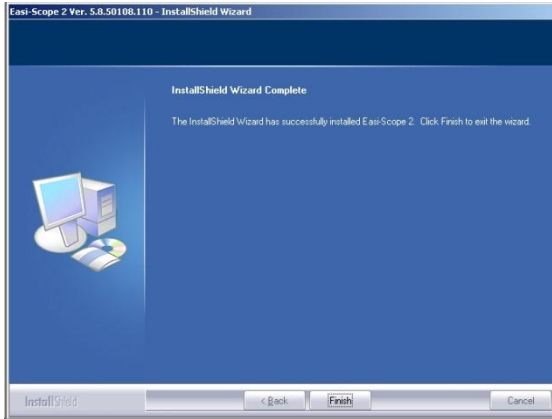
6 Installing Hardware Driver and Application

6.1 Windows XP SP3

1. Plug your USB Receiver into your computer and wait for the automatic Windows hardware installation to finish.
2. Insert the Installation CD into your optical drive and the Easi-Scope 2 Installer should be launched automatically. If this doesn't start, go to "My Computer", select the CD drive and double click on `setup.exe`
3. When the Easi-Scope 2 InstallShield Wizard appears as shown below, Click Next.

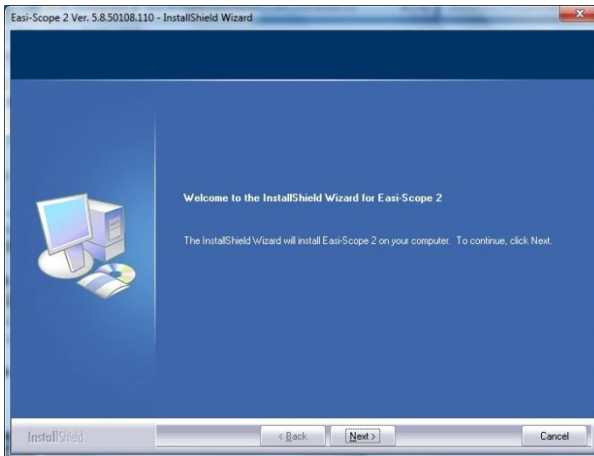


4. Wait for installation to be completed and then click “Finish” to close the Easi-Scope 2 InstallShield Wizard.

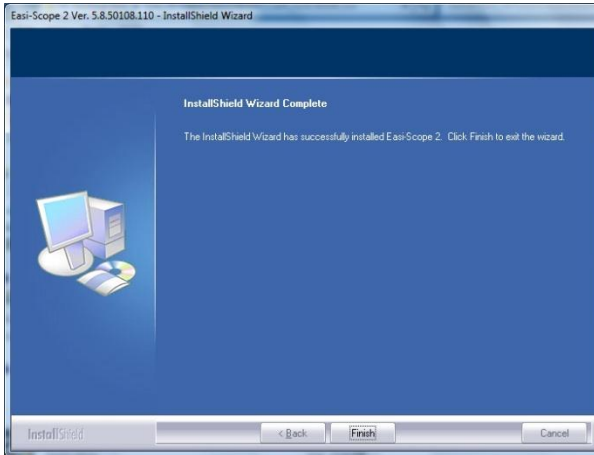


6.2 Windows Vista / Windows 7

1. Plug your USB Receiver into your computer and wait for the automatic Windows hardware installation to finish.
2. Insert the Installation CD into your optical drive and the Easi-Scope 2 Installer should be launched automatically. If this doesn't start, go to "My Computer", select the CD drive and double click on `setup.exe`
3. When the Easi-Scope 2 InstallShield Wizard appears as shown below, Click Next.



4. Wait for installation to be completed, and then click “Finish”. To close the Easi-Scope 2 InstallShield Wizard.



7 Using your Easi-Scope 2

7.1 *Charging your Easi-Scope 2*

Your Easi-Scope 2 is equipped with a built-in rechargeable battery which is charged using the mini-USB connector on the side of your Easi-Scope 2. It is recommended that you fully charge the battery before your first use.

To Charge the battery, plug-in the supplied USB cable to your Easi-Scope 2 and to your computer. When charging your Easi-Scope 2, the Status Indicator on your Easi-Scope 2 will be lit up until the battery is fully charged.

If the battery of your Easi-Scope 2 is running low, it is indicated by the Status Indicator flashing slowly.

Note: It is recommended that you do not partially charge the battery and that you fully charge the battery every time you charge it.

7.2 *Start Up*

1. Start up your computer
2. Plug in your Easi-Scope 2 USB Receiver to your computer.
3. Switch ON your Easi-Scope 2 by pressing the Power/Pairing button briefly.

7.3 Pairing

Once your Easi-Scope 2 has started up, you may need to pair your Easi-Scope 2 with your USB Receiver if:

- You are using your Easi-Scope 2 for the first time or,
- Your Easi-Scope 2 has been paired with another USB Receiver.

The pairing procedure is as followed:

1. Start up your computer, Plug in your USB Receiver, launch your Easi-Scope 2 application and switch ON your Easi-Scope 2
2. Press and Hold the Power/Pairing Button on your Easi-Scope 2 for seven (7) seconds until the Status Indicator flashes[#] rapidly, which indicated that your Easi-Scope 2 has entered Pairing Mode*.
3. Press and Hold the Pairing Button on the USB Receiver for three (3) seconds until the Channel Indicator LED flashes rapidly, which indicated that your USB Receiver has entered Pairing Mode*.
4. Once both devices enter pairing mode, they will initiate the pairing process. You will shortly be able to see the image in your Easi-Scope 2 application.

* Pairing mode timeout is set to be 15 seconds on your Easi Scope 2 and your USB Receiver. If pairing is not successful within this period, your devices will return to their normal state without being paired. Repeat steps 2 to 4 to pair your devices again.

The Status Indicator will not flash if you are charging the battery of your Easi-Scope 2.

7.4 *Pairing multiple Easi-Scope 2s*

Your Easi-Scope 2 USB Receivers are capable of pairing up to four (4) Easi-Scope 2s and allow you to switch between the image sources. To pair multiple Easi-Scope 2s, follow the procedure below.

1. Pair the first Easi-Scope 2 using the pairing procedure described in the previous section.
2. Once completed, click the Channel Select/Pairing Button once to switch to the next pairing channel.
3. The Channel Indicator LED on the USB Receiver will move to the next channel
4. Repeat the pairing procedure to pair a 2nd Easi-Scope 2.
5. Repeat step 2-3 to pair up to four (4) Easi-Scope 2s.

8 Using the Easi-Scope 2 with Easi-Scope 2 Application

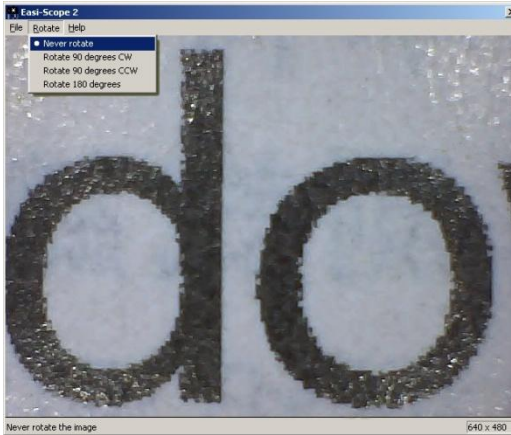
8.1 *Launching the Application*

Launch your Easi-Scope 2 application by double clicking on the Easi-Scope 2 icon. The Easi-Scope 2 Application Window appears as below:

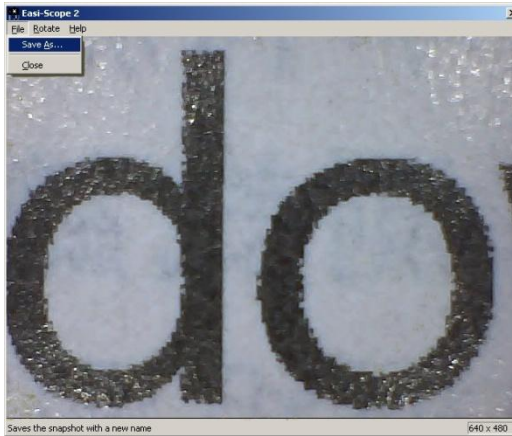


8.2 Taking a Photo

1. To take a photo of the image you are viewing, press the Snap Button on your Easi-Scope 2.
2. A new window will pop up. Before saving your photo, you may rotate your photo as you wish using the “Rotate” manual.

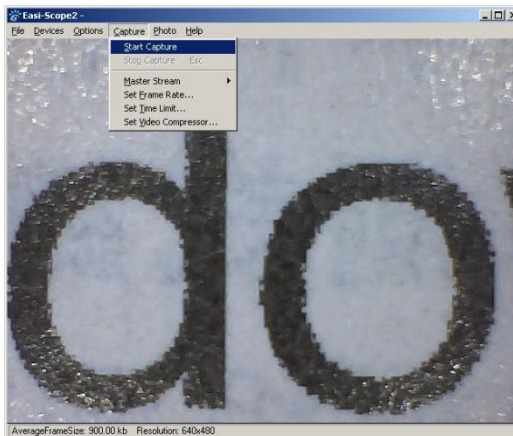


3. Click "File" then select "Save As"

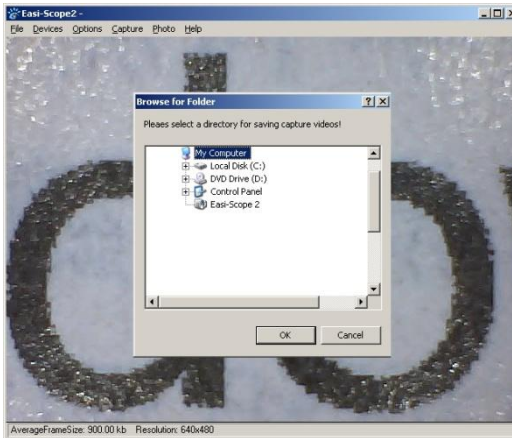


8.3 Recording a Video

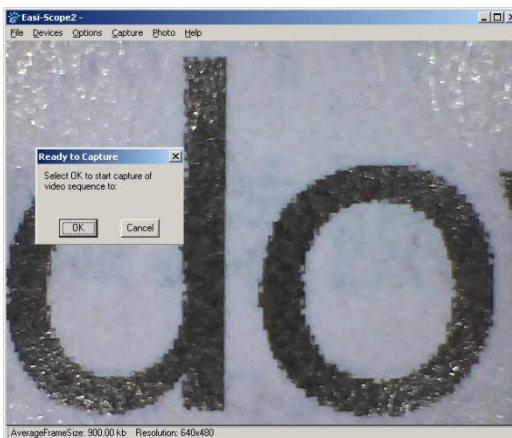
1. To record a video, click Capture then select Start Capture.



2. If a destination folder has not been already set, it will ask you to provide a destination folder to store your video file. Select a destination folder as shown below, then select OK.



3. When the following screen appears, select OK to start your recording.



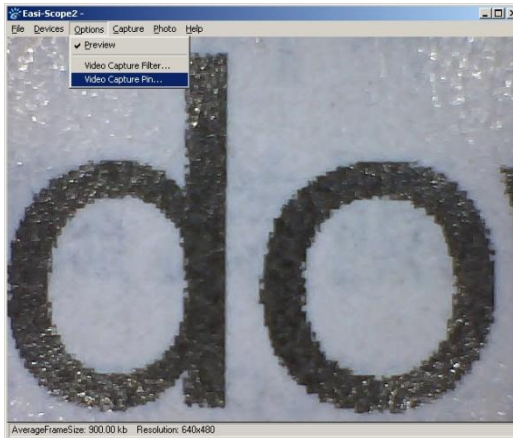
4. To stop your recording, Click Capture then select Stop Capture or press the Esc key on your keyboard as shown below.



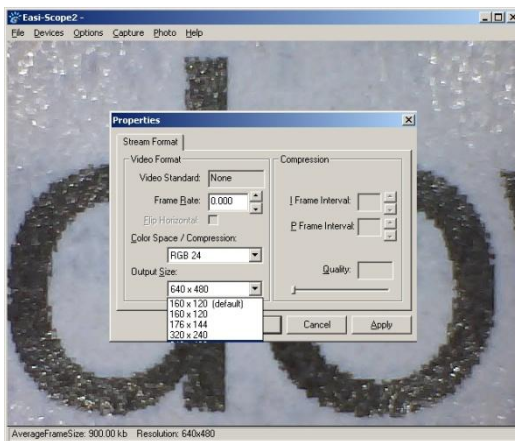
8.4 Advance Settings

8.4.1 Changing Resolution

1. To change the resolution, click Options then select Video Capture Pin.



- When the Properties window appears, you can select the desired resolution using “Output Size” selection box as shown below.



9 Support & Warranty

This product is provided with a one-year warranty for problems found during normal usage. Mistreating the Easi-Scope 2 or opening the unit will invalidate this warranty. Any data loss or consequential loss is not covered by this warranty. The battery is not user replaceable.

All out of warranty repairs will be subject to a replacement fee.

Please visit **www.tts-group.co.uk** for latest product information.

Email **feedback@tts-group.co.uk** for technical support.

TTS Group Ltd
Park Lane Business Park
Kirkby-in-Ashfield
Nottinghamshire, UK
NG17 9GU

Freephone: 0800 318686
Freefax: 0800 137525





FCC statement:

This device complies with part 15 of the FCC Rules. Operation is subject to the following two conditions: (1) This device may not cause harmful interference, and

(2) this device must accept any interference received, including interference that may cause undesired operation.