

USER'S GUIDE

LED MONITOR

MODEL:ORL2300W

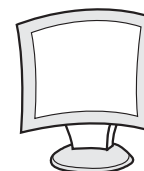
LED MONITOR
User's Guide Book

TABLE OF CONTENTS

1. INSTALLATION	3-4
1-1 Parts	3
1-2 Port Specification	4
2. FEATURES	5-6
1. 21.5 WIDE	5
2. 23 WIDE	6
3.OSD(On Screen Display)	7-9
4. CONTROL BUTTON	10
5. SARETY INSTRUCTION	11-14
6. INFORMATION TO THE USER	15
7. TROUBLE SHOOTING	16

1. INSTALLATION

1-1 Parts



TFT LED Monitor



User's Guide Book



VGA Signal Cable

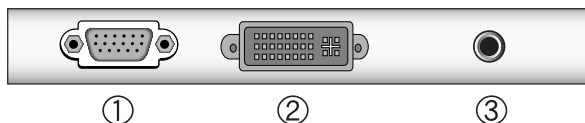


DVI Signal Cable



AUDIO CABLE

1-2 PORT SPECIFICATION



① RGB : Connect the VGA signal cable.

② DVI : Connect the DVI cable.

③ AUDIO IN : Connect the AUDIO cable.

WARNING - Use only supplied cable and adaptor. Uncertified cable or adaptor may cause unexpected damage on the product.

2. FEATURES

1. 21.5WIDE

1-1 Display Mode

Resolution	Scanning rate
720x400	70Hz
640x480	60Hz / 70Hz / 72Hz / 75Hz
720x480	60Hz
800x600	56Hz / 60Hz / 70Hz / 72Hz / 75Hz
1024x768	60Hz / 70Hz / 72Hz / 75Hz
1152x864	60Hz / 70Hz / 72Hz / 75Hz
1280x720	60Hz / 70Hz / 72Hz / 75Hz
1280x768	60Hz / 70Hz / 72Hz / 75Hz
1280x1024	60Hz / 70Hz / 72Hz / 75Hz
1360x768	60Hz / 70Hz / 72Hz / 75Hz
1920x1080	60Hz

1-2 Specifications

Frequency (MAX)	1,920X1080 @ 60Hz
Pixel Pitch	0.248(H) X 0.248(V)mm
Screen Size	476.64(H) X 268.11(V)mm
H-Frequency	31 - 68KHz
V-Frequency	56 - 63Hz
Plug & Play	VESA, DDC1, 2B
Input Signal	DVI / D-SUB / AUDIO IN
Power	100-240V ~ 50/60Hz
Power supply	30W
Sleep mode	1W
Off mode	1W
Safety standard	CE, FCC

2. 23WIDE

2-1 Display Mode

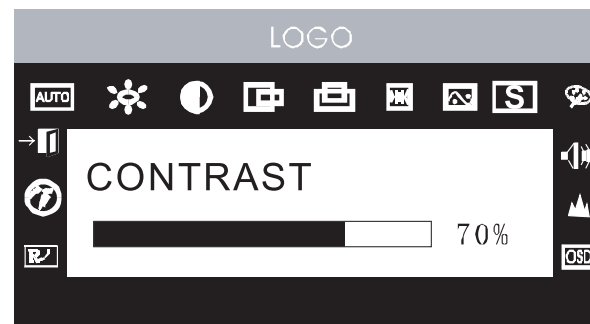
Resolution	H-Frequency(kHz)	V-Frequency(Hz)
720 × 400	31.47	70.0
640 × 480	31.47	60.0
	35.00	66.7
	37.86	72.8
	37.50	75.0
800 × 600	35.16	56.3
	37.88	60.3
	48.08	72.2
	46.87	75.0
1024 × 768	48.36	60.0
	56.48	70.1
	60.02	75.0
1280 × 1024	64.00	60.0
	80.00	75.0
1920 × 1080	66.00	60.0

2-2 Specifications

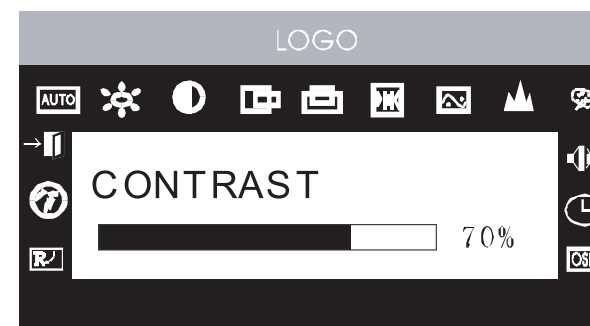
Frequency (MAX)	1,920X1,080 @ 60Hz
Pixel Pitch	0.266(H) X 0.266(V)mm
Screen Size	509.76(H) X 286.74(V)mm
H-Frequency	31 ~ 68KHz
V-Frequency	56 ~ 63Hz
Plug & Play	VESA, DDC1, 2B
Input Signal	DVI / D-SUB / AUDIO IN
Power	100-240V, 50/60Hz
Power supply	35W
Sleep mode	1W
Off mode	1W
Safety standard	CE, FCC

3. OSD(On Screen Display) Setting

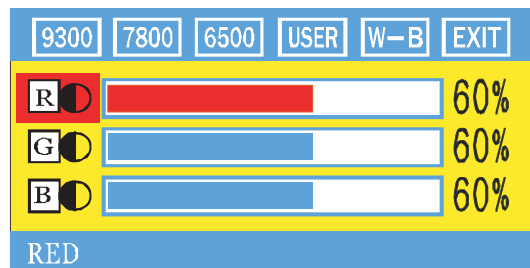
3-1 D-SUB Mode



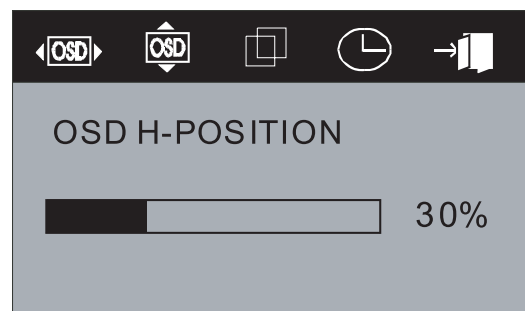
3-2 DVI Mode



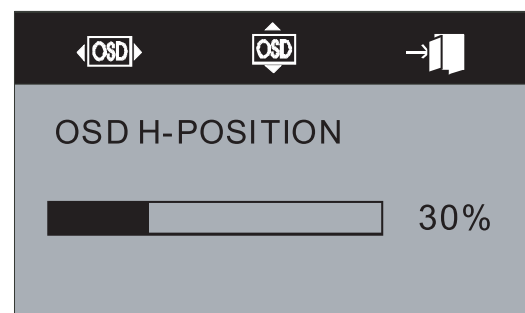
3-3 MISCELLANEOUS MENU



COLOR CONTROL SCREEN



OSD CONTROL SCREEN(VGA)




OSD CONTROL SCREEN(DVI)

3-4 OSD FUCTION

	OSD SETTING	FUCTION
	AUTO ADJUSTMENT	Adjust the screen automatically
	BRIGHTNESS	Adjust the brightness range from zero to 100%
	CONTRAST	Adjust the contrast range from zero to 100%
	H-POSITION	Adjust the horizontal position range from zero to 100%
	V-POSITION	Adjust the vertical position range from zero to 100%
	CLOCK	Adjust the frequency range from zero to 100%
	PHASE	Adjust the phase range from zero to 100%
	SOURCE	Exchange signal mode between VGA and DVI
	COLOR	Activate the color control screen (Refer to 3-2)
9300	9300K	Adjust the color temperature to 9300
7800	7800K	Adjust the color temperature to 7800
6500	6500K	Adjust the color temperature to 6500
USER	USER	Adjust the RGB color by user convenience
W-B	W-B	Adjust the color automatically
	VOLUME	Adjust the volume range from zero to 100%
	SHARPNESS	Adjust the sharpness range from 1 to 4
	OSD DISPLAY TIME	Adjust the activating time of OSD range from 5 to 60 seconds
	OSD	Activate the OSD screen (Refer to 3-2)
	OSD H-POSITION	Adjust the horizontal position of OSD screen range from zero to 100%
	OSD V-POSITION	Adjust the vertical position of the OSD screen range from zero to 100%
	OSD TRANSPARENCY	Adjust the transparency of the OSD screen range from zeor to 100%
	RECALL	Re-set the monitor
	LANGUAGE	Select the language (English,French,Portuguese,Germany,Spanish,Italian)
	EXIT	Turn off the menu screen

4. CONTROL BUTTON

RECALL ASPECT AUTO + - MENU 

- RECALL : Select to reset all setting to the factory default values.
- ASPECT : Turn on the monitor and set the monitor ratio to 4:3, wide.
- AUTO : Adjust the screen automatically.
- [+] : Move to the right(increase) on OSD
- [-] : Move to the left(decrease) on OSD
- MENU : Activate the OSD by select menu.
-  : Turn on and off the monitor

5. SAFETY INSTRUCTION

※ Follow this safety instruction to use the monitor properly and prevent the damages.

※ This safety instruction has "Warning" and "Caution" as below.



Warning - If the user does not follow this instruction, it may cause the serious damage to the user or the monitor.



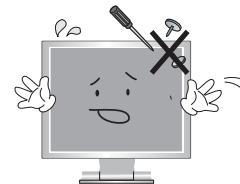
Caution - If the user does not follow this instruction, it may cause the slight damage to the user or cause some damages to the monitor.

※ Save this user's guide book for later use



Warning

Never remove the back cover and touch the inside of the monitor.
If you need a service, please contact the service center or sales rep.



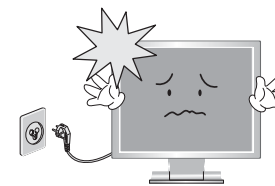
Keep away the monitor from the direct sunlight and a heating appliance



Never push objects of any kind into this product as they may result in a risk of fire or electric shock



Connect the power cord to the wall outlet tightly. If the power cord or plug are defective and the wall outlet is not tight, please do not use them

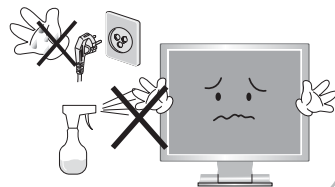


Warning

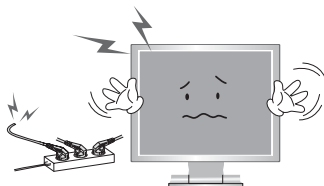
Do not install this monitor on the outside and near water. If may cause damage to the product, electric shock and fire.



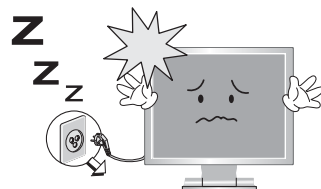
For cleaning, do not use liquid cleaners. Never touch the power plug with wet-hands



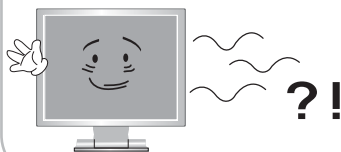
When lightning and thundering, unplug the monitor from the wall outlet and never touch it.



Unplug this product from the wall outlet, when it does not operate for a long time.



When smoking and noising from the monitor, unplug the product from the wall outlet and contact a service center or the sales rep.



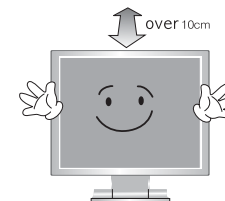
WARNING : How to fix

Do not open this product as it contains high voltage inside. It may create an electric shock.

If the user disassembles and Removes the back cover, it does not make sure to make up for the damages and do a service and exchange the monitor.

Cautions

Install this monitor some distance from the wall and do not install unless Proper ventilation is provided.



Place this product on a stable place. If not, it may fall, causing serious damages to the monitor and people.



The openings must not be blocked by curtain, rug or other similar surface.



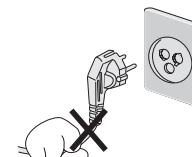
When carrying this monitor, be careful not to damage the panel and drop it. It may cause some trouble.



Before carrying the monitor, turn it off and unplug the signal cables and the power cord From the wall outlet.

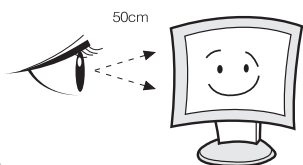


Take the power plug out from the wall outlet. Do not pull the cable. It may snap the inner-wires and cause overheating and fire.



! Cautions

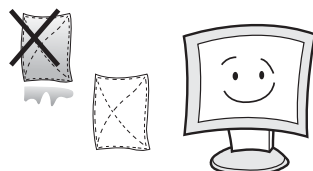
Install this monitor about 50cm far from the eyes and an angle of 0~15 degrees below eyes. Too close installation may cause having weak sight



Do not press the LED panel with hands or the sharpened material hardly.



For cleaning, unplug the monitor from the wall outlet. Do not use the liquid cloth. Use the soft cloth.



Do not use the chemical liquid for cleaning. It may cause fading and breakage.



6. INFORMATION TO THE USER

INFORMATION TO THE USER

This equipment has been tested and found to comply with the limits for a Class B digital device, pursuant to part 15 of the FCC Rules. These limits are designed to provide reasonable protection against harmful interference in a residential installation. This equipment generates, uses and can radiate radio frequency energy and, if not installed and used in accordance with the instructions, may cause harmful interference to radio communications. However, there is no guarantee that interference will not occur in a particular installation. If this equipment does cause harmful interference to radio or television reception, which can be determined by turning the equipment off and on, the user is encouraged to try to correct the interference by one more of the following measures:

- Reorient or relocate the receiving antenna.
- Increase the separation between the equipment and receiver.
- Connect the equipment into an outlet on a circuit different from that to which the receiver is connected.
- Consult the dealer or an experienced radio / TV technician for help.

WARNING

The manufacturer is not responsible for any Radio or TV interference caused by unauthorized modifications to this equipment. Such modifications could void the user's authority to operate the equipment."

7. TROUBLE SHOOTING

※ When the following troubles are occurred, follow the trouble shooting before contacting a service center or sales rep.

Trouble	Check point	How to fix
Power indicator is off and no picture	<ul style="list-style-type: none"> - The power cord is properly connected? - Check the power button of monitor 	<ul style="list-style-type: none"> - Connect the power cord properly. - Turn on the monitor
No picture even though the power LED is on.	<ul style="list-style-type: none"> - Check the signal cable is connected properly. 	<ul style="list-style-type: none"> - Connect the signal cable properly
Screen position is not collect.	<ul style="list-style-type: none"> - Check the screen size and position 	<ul style="list-style-type: none"> - Press "AUTO" button on OSD menu
Screen is too bright or dark	<ul style="list-style-type: none"> - Check the brightness of the monitor 	<ul style="list-style-type: none"> - Adjust the brightness by PC system
Screen is not clear. Focus is bad and noise occur.	<ul style="list-style-type: none"> - The frequency sets up properly? 	<ul style="list-style-type: none"> - Adjust the frequency by PC.

Memo

Memo

Memo

Memo