

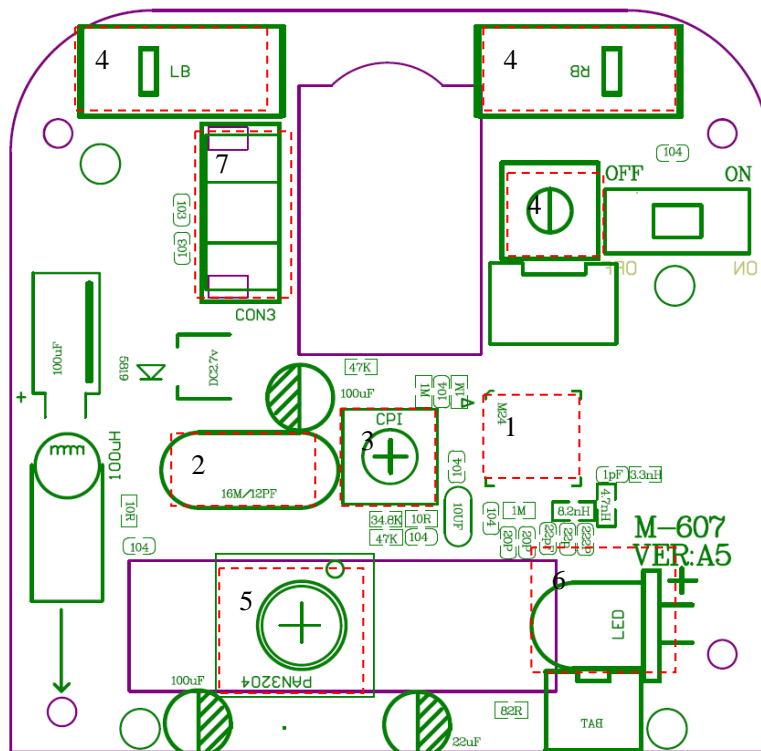
The equipment under test (EUT) is the Mouse Unit of a 2.4GHz transceiver of a wireless optical mouse with 64 channels with FHSS technique operating at 2.405GHz - 2.476GHz. It is powered by Batteries (3Vdc).

Modulation Type: GFSK

Antenna Type: Integral antenna

Channel List

Frequency Group1		Frequency Group2		Unit
2407	2442	2405	2443	[MHz]
2408	2447	2406	2444	
2412	2451	2409	2446	
2414	2452	2410	2448	
2417	2457	2411	2449	
2420	2458	2413	2453	
2421	2459	2415	2455	
2422	2460	2416	2456	
2427	2461	2418	2462	
2428	2465	2419	2463	
2431	2468	2423	2464	
2435	2469	2425	2466	
2436	2472	2429	2467	
2437	2473	2430	2470	
2438	2475	2432	2471	
2439	2476	2434	2474	



- 1) U2 acts as MCU and 2.4G RF module.
- 2) X1 is used to generate 16MHz carrier to MCU.
- 3) DPI sensitivity selector (500 / 1000 DPI switch).
- 4) Control button (Left button, Right button and Middle button).
- 5) U1 acts as Optical sensor.
- 6) LED used to connection on-line indicator.
- 7) Middle wheel acts as page down and up.