

FB150 Wireless Interactive Whiteboard User Guide

Contents

1	Overview	2
2	Features	2
3	Specifications	3
4	Hardware Installation	4
4.1.	Installation of USB Receiver.....	4
4.2.	Writing Board	5
5	Software Installation	6
5.1.	System Requirements.....	6
5.2.	Installation of Application Software.....	6
5.3.	Uninstall Wireless Whiteboard Software	8
6	Operation of Software Functions.....	8
6.1.	Single User Board ID Matching Operation	8
6.2.	Multi-user Switch Operation	10
6.2.1.	Guidance Multi-user Mode Operation	10
6.2.2.	Meeting Multi-user Mode Operation	11
6.2.3.	Strengthen Multi-user Mode Operation	12
6.3.	Operations of Software Interactive Functions	13
6.3.1.	Introduction to Overall Functions.....	13
6.3.2.	Three Methods to Operate Whiteboard Software.....	13
6.3.3.	Description of Mouse Mode and Toolbar.....	13
6.3.4.	Description of Toolbar in Whiteboard Mode.....	14
6.3.5.	Operation of Picture Lib in Whiteboard	15
6.3.6.	Description of Toolbar in Write Mode.....	17
6.3.7.	Operation Write Mode in PowerPoint Play Mode	18
6.3.8.	Operation of Print to Match of Printed PowerPoint Manuscript	19
6.3.9.	Intelligent Session Recorder and Playback.....	21
6.3.10.	Operation of Page Brower	22
6.3.11.	Operation of Whiteboard Page Manager.....	23
6.3.12.	System Toolbar (Tray) Menu	23
7	Notices	25
7.1.	Tips for Usage	25
7.2.	Common Input Problems and Solutions	278
7.3.	Recharging your batteries	27

1 Overview

The ONfinity FB150 is a fully featured portable wireless interactive Whiteboard system that enables interactive teaching from anywhere in the classroom. The interactive Pen (ePen) is integrated with a ballpoint that allows users to write on standard A4/ letter size paper and interact with software applications simultaneously.

Disentangle from connection cables and master wireless interactive presentations with the ONfinity FB150 Wireless Interactive Whiteboard system. Utilizing exclusively enhanced 2.4GHz RF wireless technology, the ONfinity FB150 Wireless Interactive Whiteboard connects to a computer and feeds real time demonstrations on its active area onto the computer screen or projected screen, when used with a data projector.

Connect multiple ONfinity FB150 Wireless Interactive Whiteboards to the same computer, creating a truly interactive teaching / presentation environment. With the ONfinity FB150 Wireless Interactive Whiteboard, teachers can walk around the classroom and present various topics, highlight and annotate on the active area. Students become much more engaged as they can also give real time contributions to the lesson. This same resourceful setting can also be used in business meetings, seminars, product demonstrations, and exhibitions.

2 Features

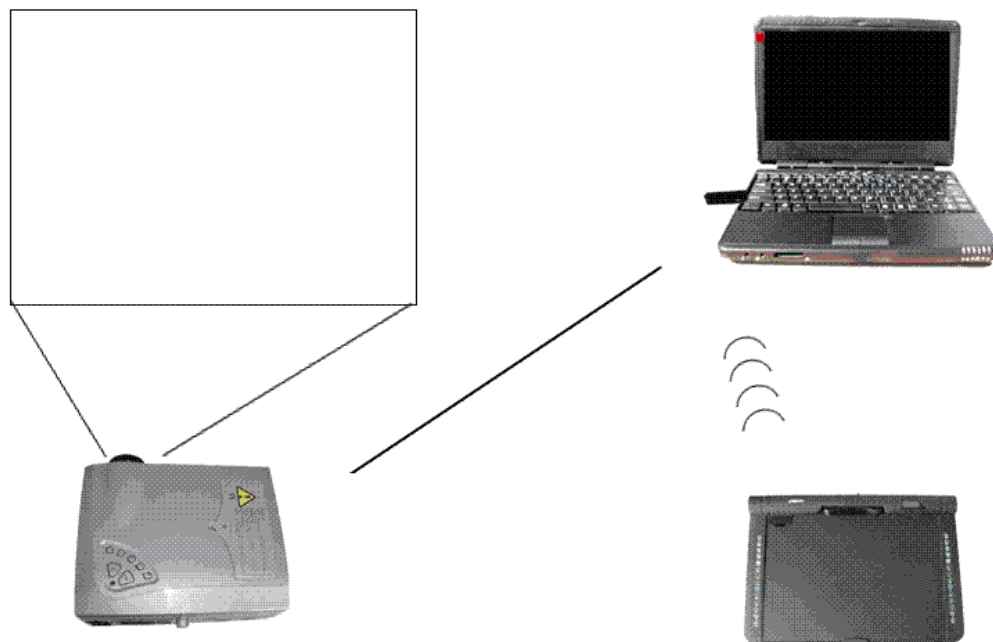
1. Powerful PowerPoint presentations – write, highlight and flip the pages during PowerPoint slide show mode.
2. Smooth wireless connectivity – 2.4GHz RF proprietary communication system to ensure a smooth connection.
3. Supports multi-user mode – configure a whole class interactive solution or group meeting. Control right is switched freely.
4. Onboard LCD display allows the users to monitor the system status at any time easily.
5. Standard A4/letter size writing area – realistic writing space, also can writing on real paper in real ink!
6. Superior positioning precision up to 0.1mm.
7. Onboard operation icons – provides instant access to on-screen shortcuts by touching with the interactive ePen.
8. Supports both right-handed and left-handed users.
9. 'Print to Match' function under Power Point – a unique feature that enables users to write on the print out and match to the display easily.
10. Ultra low power consumption – prolong the continuously working time.
11. Whiteboard mode for workshop or teaching – an image library is also provided to prepare content easily.
12. Ultra portable and lightweight (200g with batteries).

3 Specifications and Package Contents

General	
USB Receiver Interface	USB V2.0
USB Connector	Standard USB connector
Maximum Connection Numbers	128 wireless terminals
Wireless Frequency	2.4GHz RF
Wireless Transfer Rate	2.0MB /second
Effective Transmission Distance	>20M
Writing Area	297 x 210 mm (A4 size or small)
Writing Medium	A4 sheet, letter sheet or on the board directly
Interactive Pen	
Positioning Technology of Interactive ePen	Ultrasonic positioning
Interactive ePen	Common ball pen refill or plastic pen refill Length 67mm, diameter 2.28mm
Button on the Interactive ePen	One button, as right mouse button
Size of Interactive ePen	Length 150mm and diameter 15.5mm
Power Supply of Interactive ePen	1.5 V AG13 x 3 800 hours for consecutive usage
Power Consumption of Interactive ePen	Operation <0.9mA Standby <10uA
Report Rate	62 points/second
Positioning precision	0.1mm
Height of interactive ePen above writing board	Maximum 50mm
Writing Board	
Size of Writing Board	360 x 255 x 25 mm
LCD Display Size of Writing Board	30 x 10 mm
LEDs of Writing Board	Working status LED is green and flickers while writing, Recharging LED is red when recharging
Buttons of Writing Board	Power ON/ OFF and Reset (Wakeup) switches 14 soft keys for operation of application
Power Supply of Writing Board	Lithium 480mAh rechargeable battery, 10 hours for consecutive usage
Weight of Writing Board	200g (with batteries)
Package Contents	
ONfinity FB150	Rechargeable Writing Board x 1
	USB 2.0 Receiver (Dongle) x 1
	interactive Pen x 1
	Ball Pen Refill x 3
	Plastic Pen Refill x 1
	Iron Clamp x 1
	USB Extended Cable x 1

	USB Rechargeable Cable x 1
	Manual and Software CD x 1
	Hand Carry Bag x 1

4 Hardware Installation



4.1. Installation of USB Receiver

After the driver installed (which is automatically installed when Wireless Whiteboard software is being installed), insert USB receiver into USB port of computer, and LED on USB receiver lights up, indicating it is ready to use.



4.2. Writing Board

1. Built in with Lithium 480mAh rechargeable batteries, and control battery power via power switch.
2. Power switch: The switch on the back side of writing board is power switch; switch it to ON or OFF to control power supply.
3. LEDs: The green LED is the operating-mode indicator. It is green when there is power. It flickers when there is writing. The red LED is the recharge LED indicator. It lights up when battery is recharging. After recharge is completed, it will turn off.
4. Reset (Wakeup) key: the elliptic key on the top of writing board is Reset (Wakeup) key. Function: the writing board automatically enters energy-saving (sleep) mode when it is not used in about 5 minutes, the LED goes out. To re-enter operating mode, press the key.



Fig. 1. Wireless Whiteboard



Fig. 2. Interactive pen (ePen)

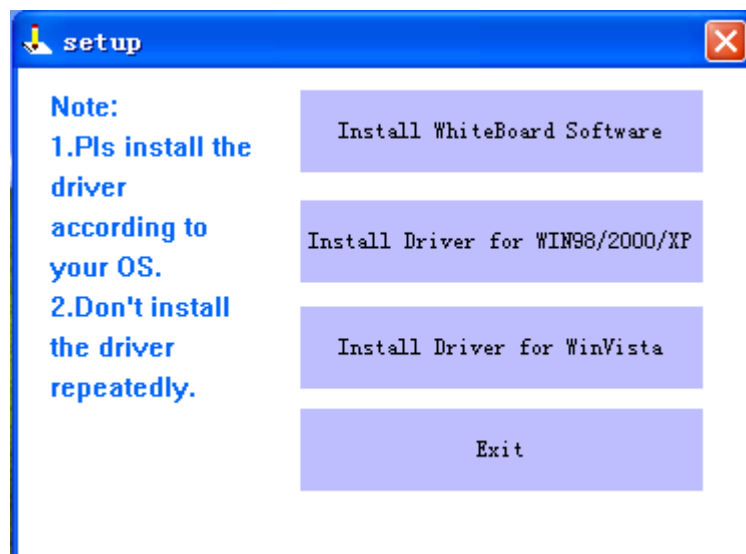
5 Software Installation

5.1. System Requirements

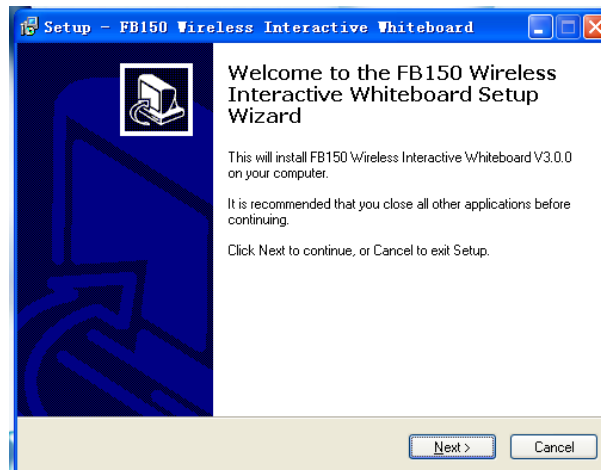
- ◆ Microsoft Windows 2000/NT/2003/XP/Vista
- ◆ Pentium III processor or above
- ◆ Minimum 50 MB free hard disk space
- ◆ 128M memory
- ◆ 16X CD-ROM
- ◆ USB port
- ◆ VGA card that supports 16 or 32 bit display color
- ◆ Minimum screen resolution 800X600

5.2. Installation of Application Software

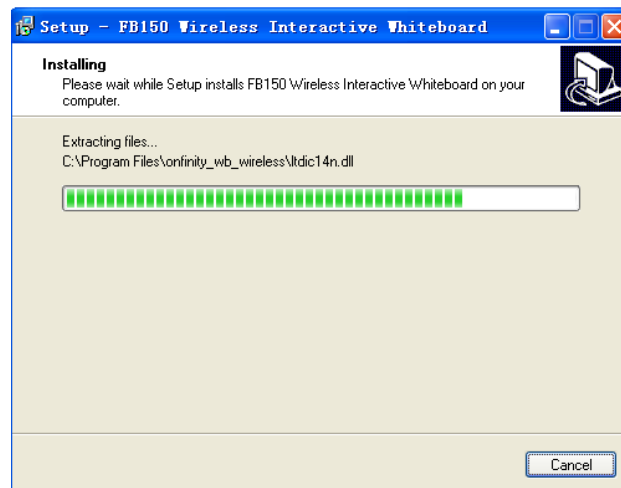
1. Do not connect USB Receiver before software installation.
2. Insert the disk supplied with the product into the CD-ROM, the installation will be launched automatically, (please run Setup.exe if auto-run of your system does not process), and the screen displays application setup wizard.



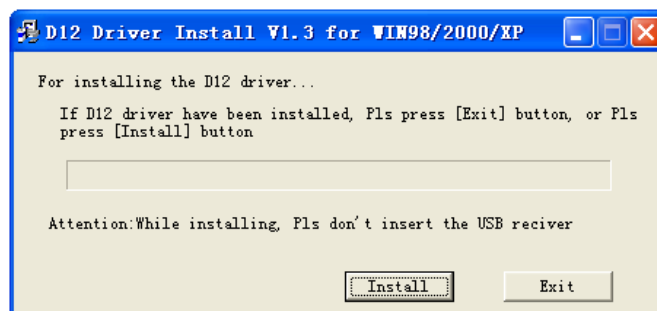
Click "Install Whiteboard Software" to install whiteboard software.



3. Click Next to start installation of the application;




4. Finally, install USB driver according to your OS.




Remarks:

If the USB driver cannot be installed successfully, a prompt message “New hardware found” will appear when the USB receiver is connected to your PC. Please install the driver manually according to the prompt message. A USB driver directory which contains the USB driver can be found in the Software CD. The driver supports both Windows XP and Vista OS.



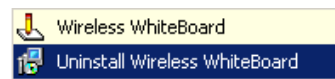
5. When installation completed a shortcut icon  appears on the desktop.
6. Insert USB receiver into USB port, the LED on USB receiver lights up.



7. Startup the Wireless Whiteboard software: Double click the icon  on the desktop.

5.3. Uninstall Wireless Whiteboard Software

1. Select All Programs in Start menu, and then Wireless Whiteboard.



2. Select the item Uninstall Wireless Whiteboard.

3. The following dialog box pops up:



4. Select Yes to uninstall this software. After completion the following dialog box pops up:



5. Click OK to complete uninstall.

6 Operation of Software Functions

6.1. Single User Board ID Matching Operation


Transmission of handwriting signal from wireless interactive whiteboard to receiver is carried out through

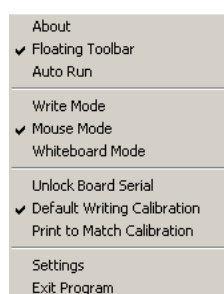
2.4GHz wireless RF protocol. USB receiver should recognize which writing board is sending signal, so as to properly transfer to application for processing. This overall process is called Board ID Matching. The following steps illustrate the process:

- 1) Insert USB receiver into USB port and the LED on USB receiver lights up, then run the wireless whiteboard software. Switch on the power of writing board or press the Reset (Wakeup) key if under energy-saving (sleep) mode and the computer screen pops up the dialog box as follows:



- 2) Board ID 2019 is the board ID number the system had just detected. If this ID number equals to the ID number of your writing board, press Yes or directly press Enter key on the keyboard. Then activate interactive pen, move it on the writing board. If the mouse cursor moves according to pen move it indicates that the matching process is completed and it is ready to use.
- 3) If this ID number does not equal to the ID number of your writing board, press NO and the system would automatically detect another ID number. When another ID number is detected, above dialog box pops up, then operate as Step 2. If you select NO carelessly, pull out USB receiver and insert it again.
- 4) If the computer needs to use a writing board with another ID number, pull out USB receiver first and then switch on power supply of writing board, or press Reset (Wakeup) key if under energy-saving (sleep) mode, then insert USB receiver again, then repeat Step 2.
- 5) If binding of ID number need to be removed and you don't want to disconnect USB receiver (pull out

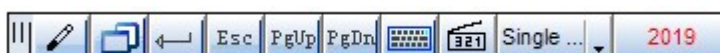
and insert again), left click the tray icon  on the system toolbar (tray) menu, the following menu



pops up, click Unlock Board Serial and the system would return to Step 2.

(Remarks: 6.2. Multi-user Switch Operation is easier for you to switch board ID)

- 6) After ID matching operation completed, the working ID will be displayed at the end of toolbar.





You can find a LCD display on the board, the picture as follows,

the ID number of the board will be presented on the LCD.


When you use the pen to click the below icon on the board, the corresponding number will be presented on the LCD. When Unlinks, “offline” will be presented on the LCD.

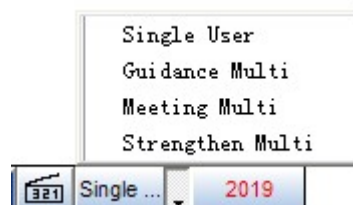


- | | |
|------------------------|----------------------|
| 1. MS: Mouse mode | 8. ER: Eraser |
| 2. WR: Write mode | 9. CL: Clear |
| 3. WB: Whiteboard mode | 10. NW: New page |
| 4. PC: Pen color | 11. PP: Preview page |
| 5. PW: Pen width | 12. NP: Next page |
| 6. PN: Pen | 13. TB: Tool bar |
| 7. HL: Highlighter | 14. RH: Raise hand |

6.2. Multi-user Switch Operation

Every wireless whiteboard has a unique ID number. User switch refers to switch software control right from one writing board to another. There are two types of switch operation: Guidance Mode Switch and

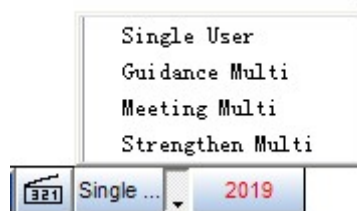
Meeting Mode Switch. To enter the two types just click the  “Single” button on the toolbar. The following pop-up menu will appear:



6.2.1. Guidance Multi-user Mode Operation

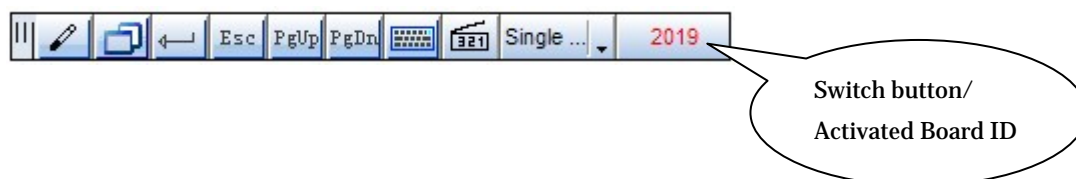
The first writing board obtaining control right is named as Master, whose ID number is the first number locked after the software is running. Specific switching operation sees as follows:

1. The software runs for the first time after Windows activated or operation of pull out and insertion of USB receiver is completely same with single-user operation.





2. Press the button, the menu will pop up, choose Guidance Multi-user mode.

3. Software toolbar include a switch button, and displays currently activated ID number.



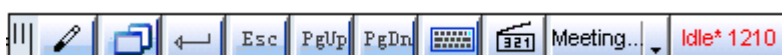
4. Press the switch button, it will pop up a dialog box which can display the locked ID number. Now the writing board which has owned the locked ID number will become the activated board (master board). If

you want to switch the control right to the student, the student only need press the  button on his writing board, then the computer will pop up a dialog, choose Yes to switch the control right.


5. The method to return control right to master ID number: current ID operator clicks the  button, then affirm himself board number, and the master ID user operates with mouse to click Return to Master.

6.2.2. Meeting Multi-user Mode Operation

1. Meeting Multi-user mode indicates that all the existing boards are equal when applying control right. To enter Meeting Multi-user mode just select **Meeting Multi** on the pop up menu. The toolbar will be like this:

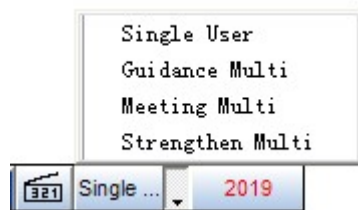


2. The last right part is displayed current status and current writing board ID. There are two types of switching status: Idle and busy.

3. Gain the control right: click the  icon on top right of writing board when the status is "Idle", then it will pop up a dialog box which show the locked ID. Here the locked ID board is become the activated board. Busy status indicates that other board can not apply the control right until the status become idle.

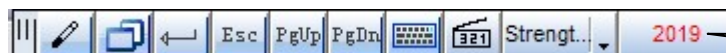
4. Time has elapsed for 5 seconds after the board gaining control, and then the status will change to idle, the other board can apply the control right.

6.2.3. Strengthen Multi-user Mode Operation



1. Press the **Single ...** button, the menu will pop up, choose Strengthen Multi-user mode.

2. Software toolbar includes a switch button, and displays currently activated ID number.



Activated
Board ID

3. Press the "2019" switch button, the following dialog box pops up:



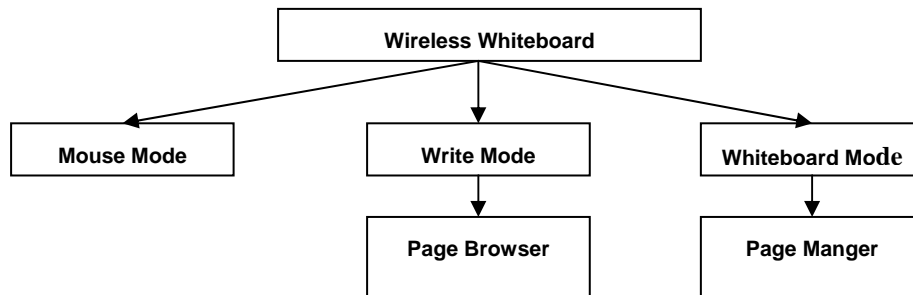
You can edit the content of the Board Switch dialog box as you need. If you have more than one board, you need to add the students' name and their whiteboard ID in advance.

4. Select an ID number in the list, click Switch to ID, it would switch to corresponding ID number automatically.

5. Two methods to return control right to master ID number: 1: current ID operator clicks the Switch button, then selects Return to Master; 2: current ID operator inserts the interactive pen into the plughole on the board, and the master ID user operates with mouse to click Return to Master.

6.3 Operations of Software Interactive Functions

6.3.1. Introduction to Overall Functions



-Include basic functions
of a wireless mouse

-Interactive ePen clicking
Equals to left mouse
Button, pressing the
Button on the pen
Equals to the right
Mouse button

-Make annotations in any software
interface


-Powerful PowerPoint presentation
function, convenient for operation

-All pages are automatically saved
and ready for future use

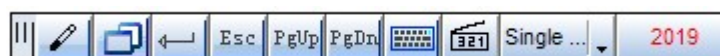
-Activate Whiteboard function
to write on interactive
whiteboard

-To save handwritten content
for future use (electronic
lesson preparation function)
-To import pre-made pictures
or figures from Teaching
Image Lib in Whiteboard
Mode to enrich the teaching
or workshop

6.3.2. Three Methods to Operate Whiteboard Software

- 1 Toolbar operation: In every mode, there is a toolbar on the bottom of the screen. Use the toolbar to realize various software operations.
- 2 Soft keys on the writing board: Soft keys correspond to the toolbar. Both have same operation effect. Directly click them with the pen to facilitate operation.
- 3 System toolbar (tray) menu: left or right click the tray icon. .

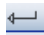
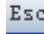
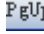



6.3.3. Description of Mouse Mode and Toolbar



: switch to Write Mode;





: switch to Whiteboard Mode;

: correspond to Enter on the keyboard, to turn to next page when demonstrating PowerPoint;
: cancel operation;
 and : correspond to <Page Up> and <Page Down> separately;
: open / close on-screen keyboard;
: switch button / current ID display.


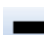
6.3.4. Description of Toolbar in Whiteboard Mode



: switch to Mouse Mode; : switch to Whiteboard Page Manager;




The first four items are to select colors of pen, and the last three items are to select pen width and eraser


width.  normal,  thick;



is to select the width of pen or eraser by directly dragging;

: pen for free writing; : eraser to erase handwriting;

: select picture for operation. When a picture is selected, you can resize, move, delete, etc.;

: cancel the last operation without restriction;

: clear all the contents of current page;



: zoom in or zoom out the select picture of image lib;



: create a new page, turn to previous or next page separately;



: Record the process of the speech;



: The current ID;



: Searchlight function.






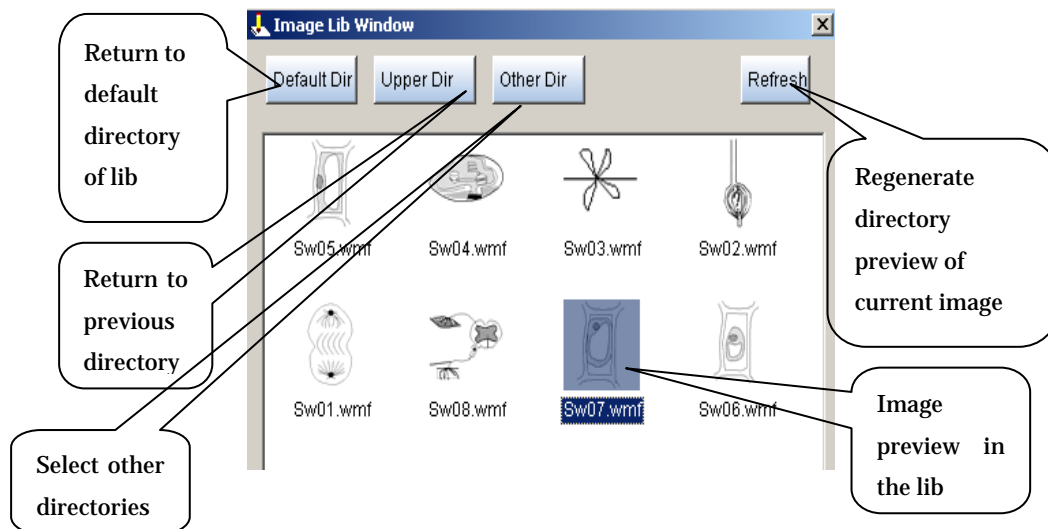
: Magnifying glass function.



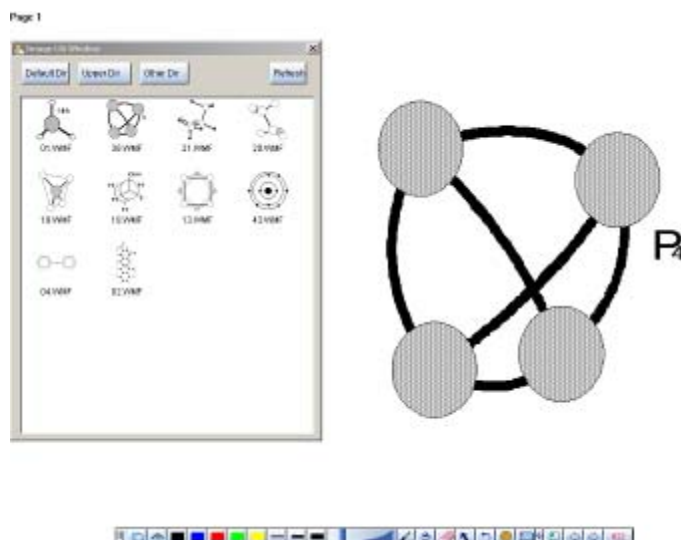
6.3.5. Operation of Picture Lib in Whiteboard



Press the button on the ePen or press the tools key  of the menu to select additional functions. Picture Lib supports all formats of pictures. Other formats can be converted to WMF format automatically and save in the directory selected. Wireless interactive whiteboard software has common teaching library that are divided into subject category and can be transferred directly in the whiteboard. This process is described as follows:

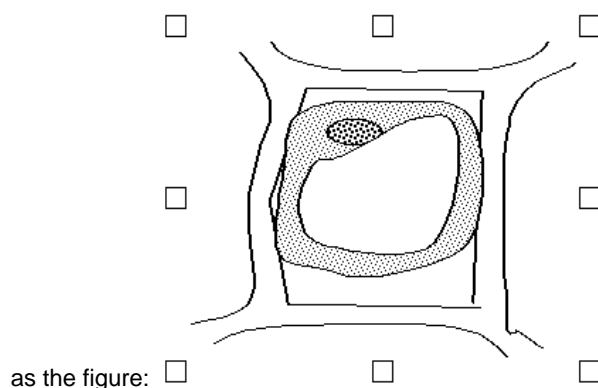
1. The following picture lib dialog box pops up as below:



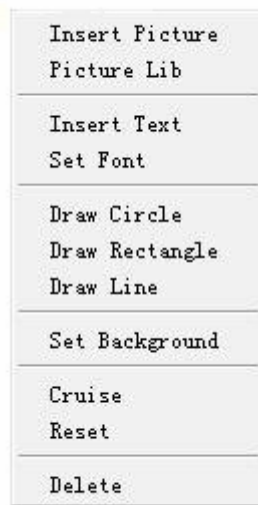
2. Input the library figure on the whiteboard: click the figure in the library, point to the position desired in the whiteboard and drag the cursor to get a desired size, then withdraw pen to complete, shown as follow:



3. Cancel image input: click the icon  in the display of lib selection dialog box to cancel image input operation.
4. Move image input dialog box: press the button on the pen to move the lib selection dialog box to draw figures anywhere on the whiteboard.
5. Select a figure: press the button  on the toolbar, then left click the image to operate, showed



6. Move, resize and delete figures input: drag the figure to move; move the mouse to a selection point around the figure and drag the point to resize the figure; press DEL key on the board to delete the figure selected.
7. Exit library status: close lib selection dialog box to exit.
8. Open images in other directory: select Other Dir to open the directory of another pictures, press Refresh to show all images. Formats supported include gif, bmp, jpg and png.
9. There are additional functions in the whiteboard mode, please refer to the following pop-up menu.




- ◆ Insert Picture: Insert any format pictures into the whiteboard anywhere.
- ◆ Picture Lib: Select picture images in the picture lib.
- ◆ Insert Text: Input any text into the whiteboard. Select the function and click on the whiteboard, the text input area will appear.
- ◆ Set Font: Select the font of characters, e.g. front, type, size and etc.
- ◆ Draw Circle: Draw circles on the whiteboard.
- ◆ Draw Rectangle: Draw rectangles on the whiteboard.
- ◆ Draw Line: Draw the beelines on the whiteboard.
- ◆ Set Background: The user can select different background picture that the system provided.
- ◆ Cruise: Move the screen display by moving the ePen in any direction. The single page full-screen writing is support and without any borders.
- ◆ Reset: The screen display will be reset to normal (reset the cruise display).
- ◆ Delete: Delete the selected picture.

6.3.6. Description of Toolbar in Write Mode





: switch to Mouse Mode; : switch to Whiteboard Mode;

: enter page browser to save or browse pages;



The first four items are to select colors of pen, and the last three items are to select pen width and eraser



width.  normal.  thick.

: pen for free writing; : eraser to erase handwriting;

 : highlight pen (background transparent), one width 10, and the other width 20;



: select more colors; : create a new annotated page;

: save current page to image format; : clear all the contents of current page;










 : switch to previous or next page (create a new page).

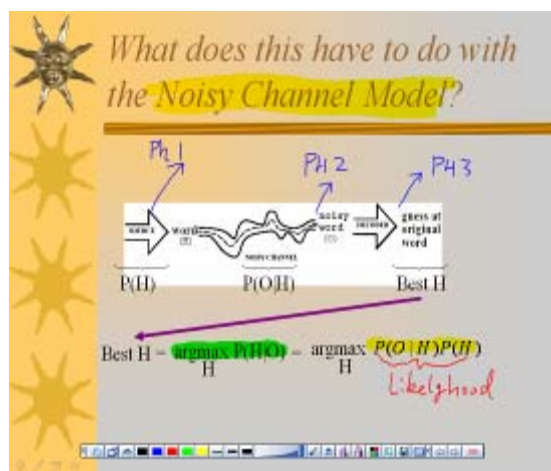
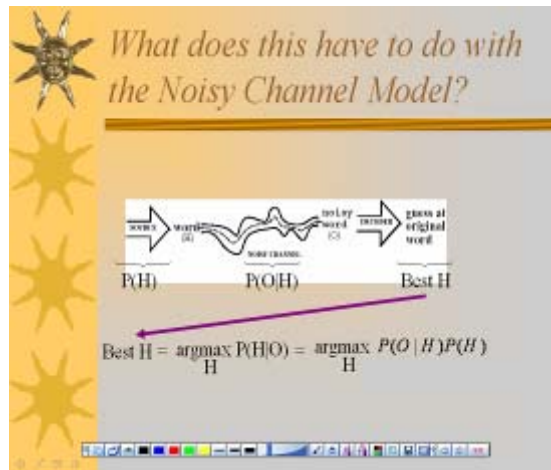
6.3.7. Operation Write Mode in PowerPoint Play Mode

When doing presentations with PowerPoint slide show, the lecturer can make annotations or explanations on the PowerPoint pages, and controls turnover of the PowerPoint slide. These operations require two working modes of wireless interactive whiteboard, shift between Mouse Mode and Write

Mode. To facilitate users' operation, we have set a set of shortcut button  and  in Write Mode for PowerPoint.

Directions as follow:

1. Open the PowerPoint document, run wireless interactive program, enter mouse mode, and interactive pen acts as the mouse. Play the PowerPoint presentation.
2. Click  on the writing board to enter Write Mode, and you can make remarks.
3. Interactive pen acts as the mouse in mouse mode. Use the interactive pen to click   on the writing board or  on the writing board to turnover PowerPoint pages.
4. In Write Mode, click  on the writing board or  on the floating toolbar to turn to the continuous new page and create a new annotation page. For example, if you are presenting on page 5, and then you go back to page 4 to explain something, you can go to the page 6 directly by pressing this new page button. Time interval of turnover is determined by shift time of PowerPoint play pages. Time settings refer to Parameter Settings.
5. Click   on the writing board or  on the floating toolbar to turn to the previous and next pages and create an annotation page separately in Write Mode.
(Remarks: there may have a delay when you turn to a new page, you can not write until the toolbar menu come out.)
6. If the Write Mode cannot display the page correctly (please refer to 6.3.12.2b to set proper PPT page switch delay) when playing a complex PowerPoint slide show, users may need to switch to mouse mode by pressing any up, down, left or right arrow keys or Enter key first. Then go to the page and click Write Mode again to continue your annotation.

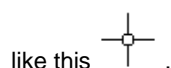


6.3.8. Operation of Print to Match of Printed PowerPoint Manuscript

Print to Match is a facility to make annotations directly on the manuscript printed while the annotations display accurately on the position of screen. This makes this procedure much easier as the user is not to move mouse and watch the position on the screen.

Directions as follows:

1. When printing PowerPoint (PPT) manuscript, a frame must be added: mark **"Frame slides"** in the PowerPoint print window.
2. Enter Whiteboard program, in Mouse or Write Modes, make the calibration process in **PowerPoint slide show mode**. After completion you can directly annotate on the PPT manuscript printed.
3. To enter calibration operation, hold the button on the pen over 2 seconds in Mouse or Write Mode, and the screen will be dim slightly and locked, then enter calibration mode, and mouse cursor is



4. Calibration operation:

- 4.1 locate standard of anchor point 1:

Select an easily found position on the left side of the paper, such as a dot, or beginning of letter. After anchor point 1 founded, **move the mouse cursor by mouse** to the

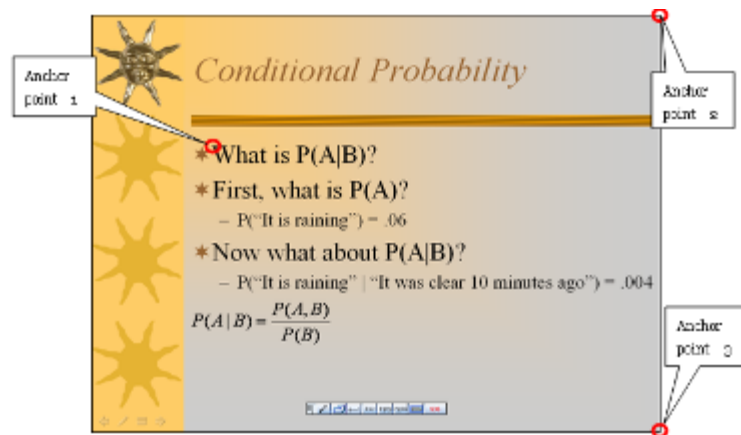
selected position of anchor point 1 on the screen, then click the same correspondent position with the tip of interactive ePen at the **PowerPoint print-out**. At this moment, the mouse cursor on screen will automatically moved to the second anchor point.

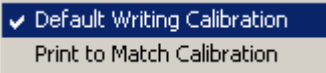
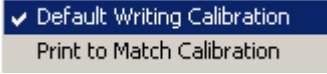
4.2 locate standard of anchor point 2:

Without changing the anchor point position 2 of mouse cursor on screen, click at **right-top edge of the frame on PowerPoint print-out**. At this moment, the mouse cursor on screen will automatically moved to the third anchor points.

4.3 locate standard of anchor point 3:

Without changing the anchor point position 3 of mouse cursor on screen, click at **right-bottom edge of the frame of PowerPoint print-out** to complete calibration. After successful calibration, the screen will unlock automatically, and the cursor restore to its previous shape.




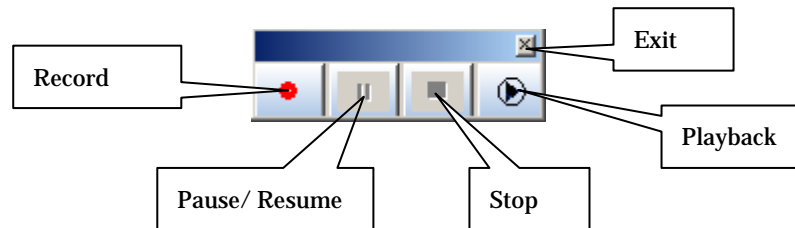
5. When entering Write Mode, writing area of hard copy and screen writing area of PPT screen correspond to each other, Print to Match function can be used normally.
6. When entering to Whiteboard Mode, the software will automatically switch to default writing area (default writing calibration). If return to Write Mode, automatically accord to Print to Match writing area (Print to Match calibration) again. If it is required to return to default writing area, select  in the tray menu, restore default writing area. At this moment, if you want to return to Print to Match, you should do the calibration again.
7. In the process of calibration, press ESC key to cancel calibration operation.
8. Print to Match. If the hard copy is sloping, the calibration process can calibrate it automatically. 
9. The marked item on the tray menu indicates current status of writing area.

6.3.9. Intelligent Session Recorder and Playback

Intelligent Session Recorder is to record and memorize all what have been presented and done on screen display into AVI format. It's useful to repeat the last presentation or when preparing lesson teaching.

1. To turn on or turn off Intelligent Session Recorder:







2. Click on Software Tool Bar  and the following Sub-tool Bar will be displayed:



3. Record Button: When "Record Button" is being clicked, the recording begins. And this button will turn grey and in the same time "Pause" and "Stop" will become visible for

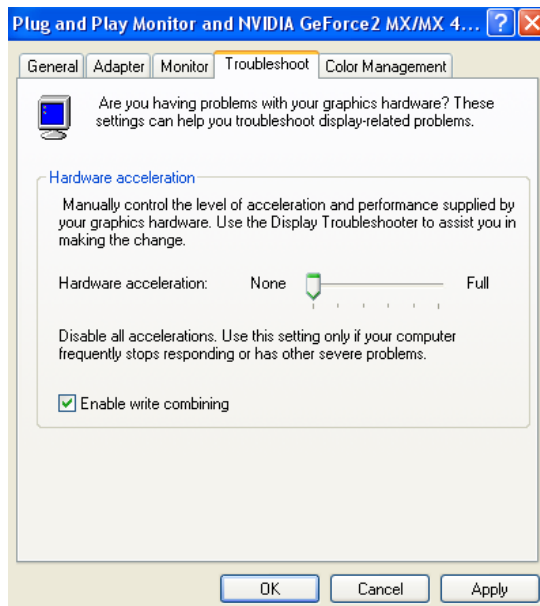


clicking

4. Pause/ Resume Button: During recording, Click on  will pause the recording and this button will be changed to , Click  will resume the recording.
5. Stop Button: Click on  will stop the recording and Playback Button  will become visible.
6. Playback Button: First, return to mouse mode, Click , Windows will automatically activate Windows defaulted Media Player (Windows Media Player) to proceed playback, adjust Media Player to full screen mode for clear display. Note: sometimes the Media Player window will be covered by the whiteboard window; you need to make it on the top of your desktop windows.
7. How to save the recorded file: During Playback, Open Media Player, Select "Save As" to save to the preferred directory.


Recommended Hints:

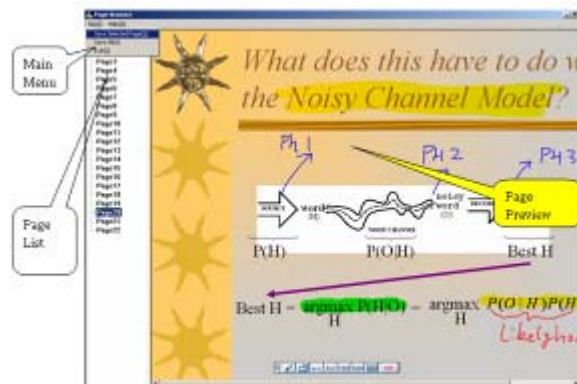
- ✧ Before using Intelligent Session Recorder, it is better that below setting in Windows may be done: Go to Display Property in Control Panel>Settings>Advance>Troubleshoot to **disable** "Hardware Acceleration".



- ✧ If encountering unsmoothness in your hand-writing during session recording, please decrease screen resolution to 800x600.

6.3.10. Operation of Page Brower

1. **Write Mode Page Browse:** Click  on the floating toolbar in the screen under Write Mode to enter page browse as follow:



2. Save, Import and Export of annotated pages

There are four available save methods in main menu:

- a) Save the page selected: to select the annotated page to save in the format of PNG/JPG/BMP;
- b) Save all pages: to save all annotated pages in the format of PNG/JPG/BMP;
- c) Export all pages: to export annotated pages for future use;
- d) Import all pages: to import annotated pages last saved to as the current pages directly.

3. Delete annotated pages

First select the preview image to delete, press the button on the pen (or right click with

mouse), and the menu  pops up, click Delete.

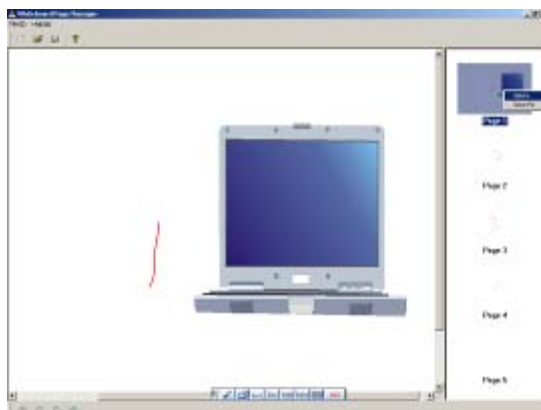
6.3.11. Operation of Whiteboard Page Manager

1. There is a Import WB Files, Export WB Files and Save as Picture in the menu bar



- ◆ Import WB Files: import WB files of previously prepared lessons class.
- ◆ Export WB Files: to export WB files of prepared lessons, same as save function.
- ◆ Save as Picture: to save document as pictures in the formats of Bmp, jpg, png. These images can then be shared by pupils via USB flash disks, printed or sent by email.

2. Delete and Save as Pictures:



a) Delete: first select the preview picture to delete, click the button on the pen, and a popup




menu appears, click Delete, the selected page is deleted successfully.

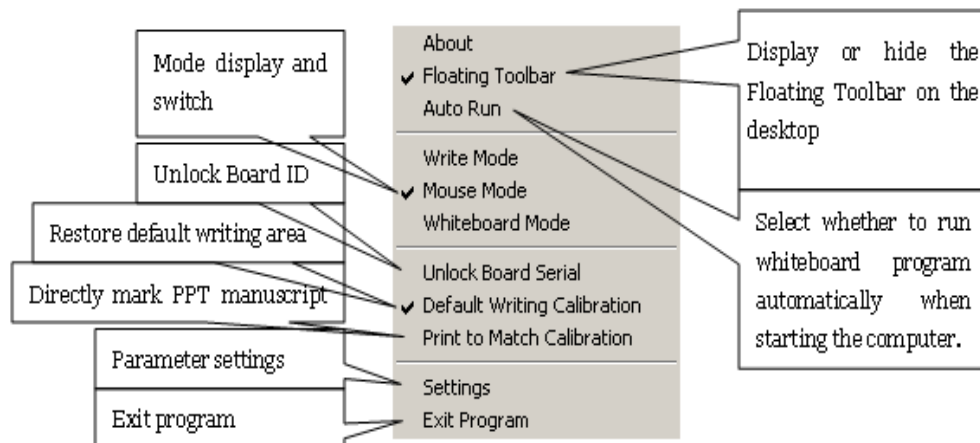
b) Save Picture as: first select the page to save as, click the button on the pen, and a



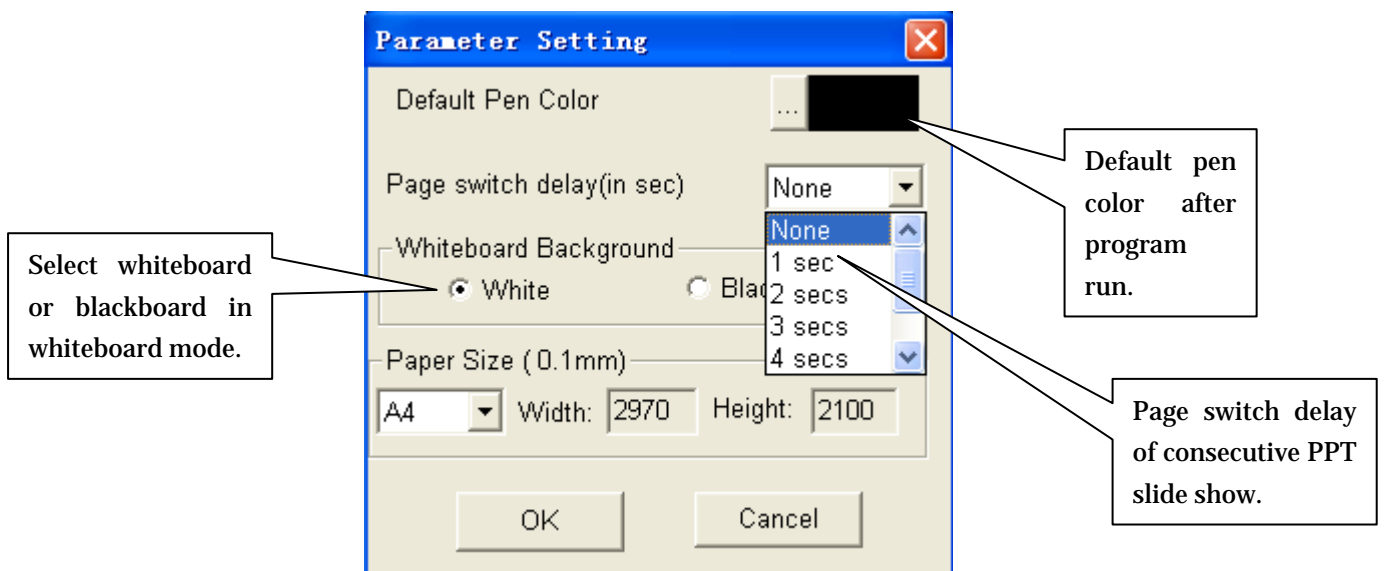
popup menu appears, click Save Pic, the page will be saved.

6.3.12. System Toolbar (Tray) Menu

1. After Whiteboard software startup a tray icon  will appear in the system toolbar (tray) menu, when clicking with the left or right mouse key the following menu pops up:



2. Parameter settings dialog



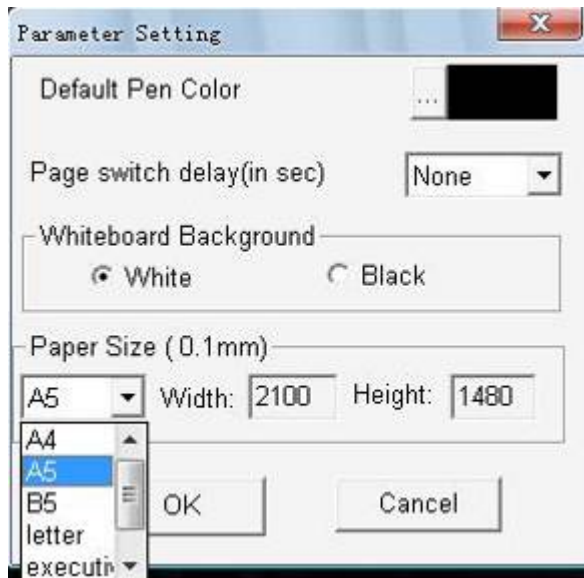
- Set default pen color (black).
- When playing PowerPoint slide, set proper PPT page switch delay. (In consideration of special effect of PowerPoint demonstration, 0,1,2,3,4,5, and 6 seconds are available, increase delay time if you find the display page is incomplete when playing a new page; but longer delay time may have a result that it will have a delay when you turnover page.)

- c) Whiteboard background color (black and white background colors are available).

3. Paper Size Support

Follow the below instruction to activate the 'Paper Size' support.

1. Click on the FB150 tray icon to pop up the menu and select 'Settings'.



2. From the 'Parameter Settings' window, select 'Paper Size',
3. You can select A4, A5, B5, letter or executive paper size.
4. Then click OK.
5. Answer Yes to confirm your changes.
6. Now you can put the corresponding size paper on the whiteboard, and then write on it.

The transformation had completed. Now the user can use the FB150 without any obstruction to the paper size.

7 Notices

7.1. Tips for Usage

Replace the Pen Refill

- a) Clamp the head of ball pen refill with original iron clamp, pull out the used one.
- b) Install the new pen refill into the pen holder.
- c) Lightly press the pen refill up.




Replace the Pen Battery

- a) Anticlockwise rotate the battery cover out.
- b) Tip out the first battery.
- c) Remove the second battery by inserting the back end of iron clamp into the square hole of the battery stack.



- d) Remove the third battery cells according to above method.
- e) Make positive poles of three new battery cells upward, and insert them into the battery sack one by one.
- f) Tighten the battery cover clockwise.

1. If the pen is idle for 5 minutes it will enter energy-saving (sleep) mode. To revoke it, press the pen tip on any surface.
2. If the writing board is idle for 5 minutes it will enter energy-saving (sleep) mode. Press the Reset (Wakeup) key on the writing board to resume.
3. Handwriting should not be too fast. Or the handwriting strokes may split.
4. Do not use the pen and mouse at the same time.
5. Do not use the two interactive ePens at the same time.
6. Do not hold the button on the pen when writing.
7. Keep the board away from interference sources, such as strong light, strong magnetism and strong ultrasonic radiator.
8. When reinstalling or updating the application, you must make sure you have closed the application.
9. When the system tray prompts that the writing board connection fails, or the icon displays like , press Reset (Wakeup) key to activate the writing board. Check whether writing board low-power LED lights up. If it lights up, recharges batteries.
10. There must be no barriers between the pen and receiver. Keep the paper flat, angle between the pen and paper greater than 60 degrees when writing.
11. During handwriting try to maintain the position of paper on the writing board. Or the input strokes may be skewed.

7.2. Common Input Problems and Solutions

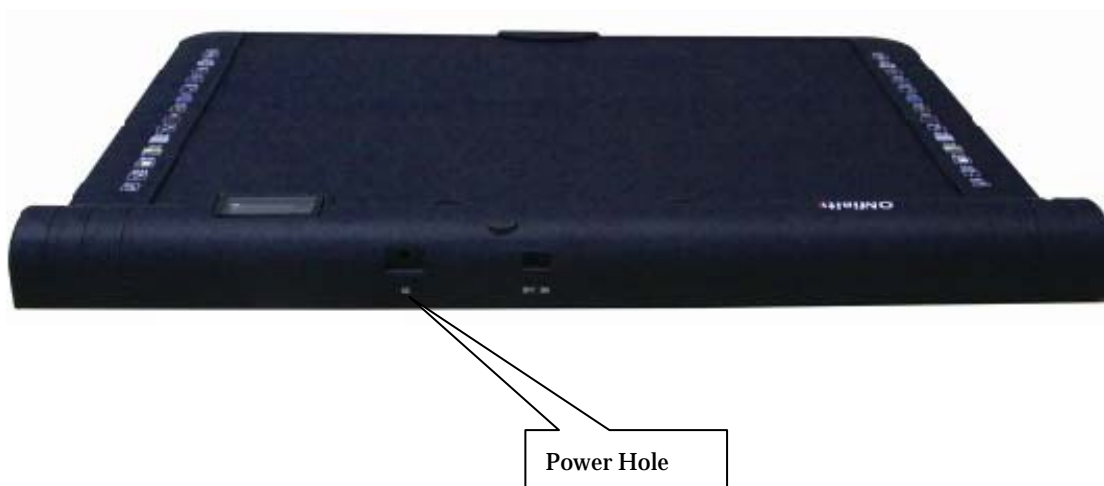
1. Q. When writing with interactive ePen, the pen is continuing to write when the pen is away from the board.
A. Check whether the pen refill is installed correctly or install the pen refill again.
2. Q. Handwriting input cannot be realized or handwriting is discontinuous.
A.
 - i. Check whether the battery power of interactive ePen is low, installation of battery polarity is wrong , check low power LED of writing board lights up. If it is lights up, you should replace or recharge the battery of writing board. .
 - ii. Check whether USB receiver LED lights, press Reset key and check whether the receiver LED flickers.
 - iii. Check whether there is barrier between the pen and writing board.
 - iv. Check whether USB driver is installed properly in Windows system. (Device Manager should display 'Philips PDIUSB12 SMART Evaluation Board')
 - v. Check whether computer is in standby, sleep, or hard disk closed state.
 - vi. Check whether there is interference, such as strong light, strong magnetism or strong ultrasonic sources (keep a proper distance from the PC host, monitor or sound box).
3. Q. When writing with ePen, Whiteboard is out of battery and can't return back to Windows or Mouse mode.
A. Refill batteries and reset whiteboard to continue or press Control+Shift+F7 of your keyboard to return to Mouse mode.
4. Q. When Control Right has been given to one of the Whiteboard user other than Master, how Master may force this user to return back the Control Right?
A. Press these three keys (Control+Shift+F8) on the keyboard of Master.

7.3. Recharging your batteries

FB150 whiteboard is built in with recharging circuit and Lithium 480mAh rechargeable battery ,and you can charge the battery thru the connection to the USB port of your PC or Notebook.

Steps for Recharging Battery

1. Connect the end of cord "3" (as shown in the picture below) to the Power Hole of whiteboard, then connect the end of cord "1" to USB port of PC or Notebook, plug in USB2.0 receiver (adapter) at the end of cord "2".
2. During recharging battery, the recharge LED indicator is in red light. After recharge is completed, the recharge LED will turn off.

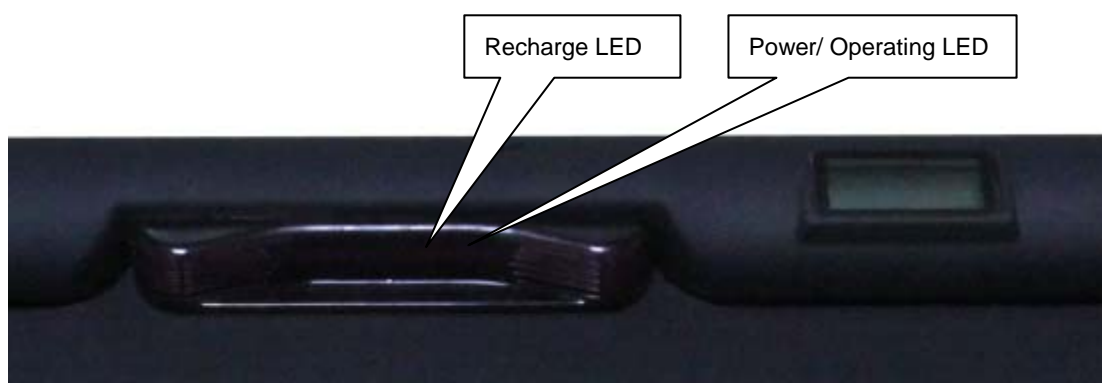


Recharge Power Cord



Pay attention to the below instruction during recharging batteries:

In some cases when you find that USB2.0 receiver (adapter) is not working properly ,if the Charging the battery is done, it may imply that the Power Supply from your USB port of PC or Notebook can not reach the standard power-out level. Please unplug the USB2.0 receiver (adapter) and then plug it into another USB port of your PC or Notebook.



FCC ID: YOYFB150

This device complies with Part 15 of the FCC Rules. Operation is subject to the following two conditions: (1) this device may not cause harmful interference, and (2) this device must accept any interference received, including interference that may cause undesired operation.

changes or modifications not expressly approved by the party responsible for compliance could void the user's authority to operate the equipment.

NOTE: This equipment has been tested and found to comply with the limits for a Class B digital device, pursuant to Part 15 of the FCC Rules. These limits are designed to provide reasonable protection against harmful interference in a residential installation. This equipment generates, uses and can radiate radio frequency energy and, if not installed and used in accordance with the instructions, may cause harmful interference to radio communications. However, there is no guarantee that interference will not occur in a particular installation. If this equipment does cause harmful interference to radio or television reception, which can be determined by turning the equipment off and on, the user is encouraged to try to correct the interference by one or more of the following measures:

- Reorient or relocate the receiving antenna.
- Increase the separation between the equipment and receiver.
- Connect the equipment into an outlet on a circuit different from that to which the receiver is connected.
- Consult the dealer or an experienced radio/TV technician for help.